

Mus. W

235

(Original)

**Frbl. Carl von
Rothschilde
Bibliothek Stadt
Frankfurt a. Main**

HARMONIA SACRA,

In honorem Nuptiarum.

ORNATISSIMI ET INTEGERRIMI

Viri-Juvenis

Dn. JACOBI STOEVEN

CIVIS HAMBURGENSIS,

SPONSI;

CVM LECTISSIMA ET PVDICISSIMA

Virgine

CORNELIA,

Viri itidem ornatissimi & honestissimi

PETRI vander Mylen FILIA,

Sponsa.

Quinque vocibus concinnata & dedicata.

A

JACOBO PRÆTORIO H. F. ORGANISTA
ad D. Petri.

TENOR.

HAMBURGI. Excudebat PAVLVS Langius. Anno 1611.

*no. 1712. Mus. pract.
Prætorius*

TENOR

à 5.



Urge: propera. ij. amica mea, propera, pro-



pera a mi ca mea, & ve- ni, & ve-



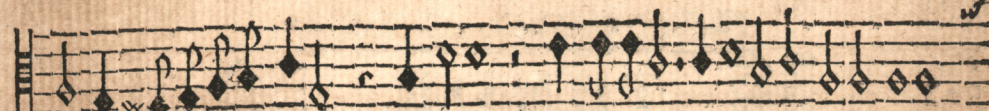
ni, ve- ni, & ve-



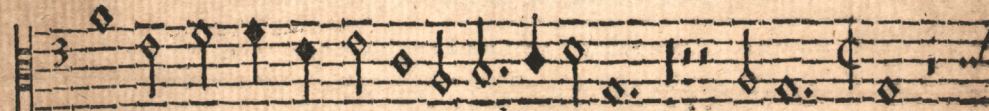
ni, iam hyems transit, imber abiit, ij.



a bi it, im ber a biit, & recessit, & re cessit,



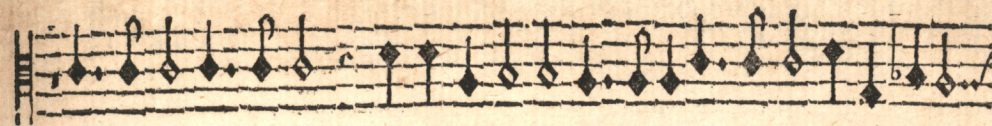
& re cef- sit, recessit, flores apparuerunt in terra nostra,



tempus pu ta ti • nis adve- nit, adve- nit,

TENOR

à 5.



propera, ij. a mica mea, pro pera, pro pera a mi came-



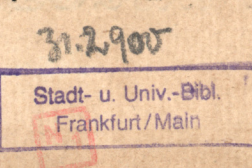
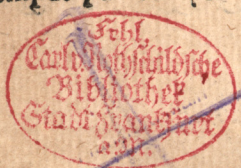
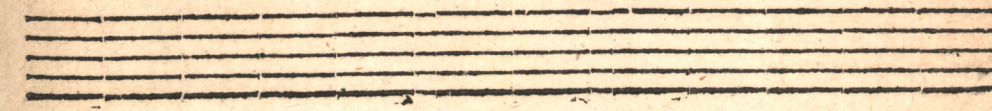
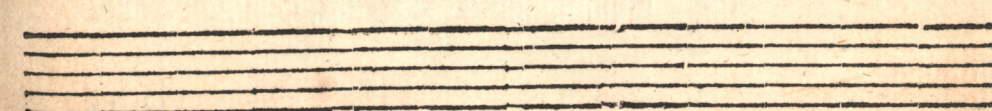
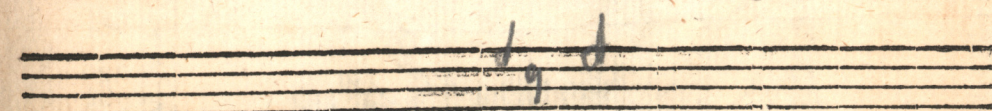
a, & ve- ni, & ve-



ni, ve- ni,



& ve- ni,



TENOR

Handwritten musical notation for the Tenor part, consisting of several staves with notes and lyrics. The lyrics are written in a cursive script and are partially obscured by the page's age and the bleed-through from the reverse side.

Decorative page for the Alto part, featuring a highly ornate border with repeating floral and scrollwork patterns. The word "ALTO" is printed in large, bold, serif capital letters in the center. Below the title is a decorative initial letter "A" that incorporates a portrait of a man's face, surrounded by intricate scrollwork and tassels. The page also contains faint musical notation and lyrics, which are mostly illegible due to the decorative elements and the page's condition.

ALTUS à 5.



Verge: prope ra ij. prope ra amica mea, prope ra

ij. a mi ca mea & ve-

ni,

& ve-

ni,

& ve-

ni, veni, iam

hyems transiit, imber abiit, imber abiit, & recessit, & recessit, & recessit, iam

hyems transiit hyems transiit, imber abiit, imber

abiit, & recessit, ij. & recessit,

flores apparuerunt in terra no stra, tempus pu ta tio-

ALTUS à 5.

nis ad ve- nit, prope ra, prope ra, prope ra amica mea, prope ra,

prope ra, a mi ca mea, & ve-

ni,

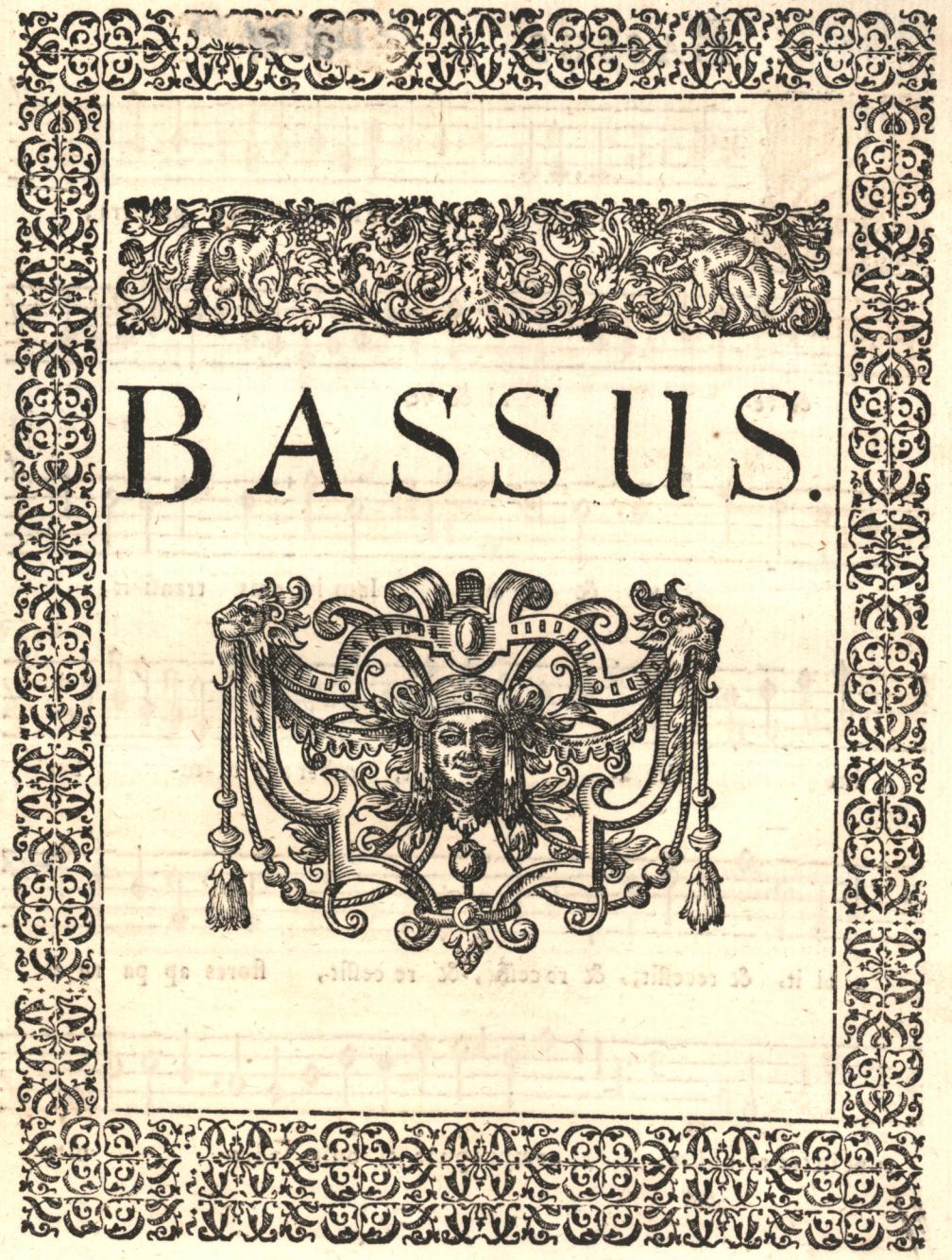
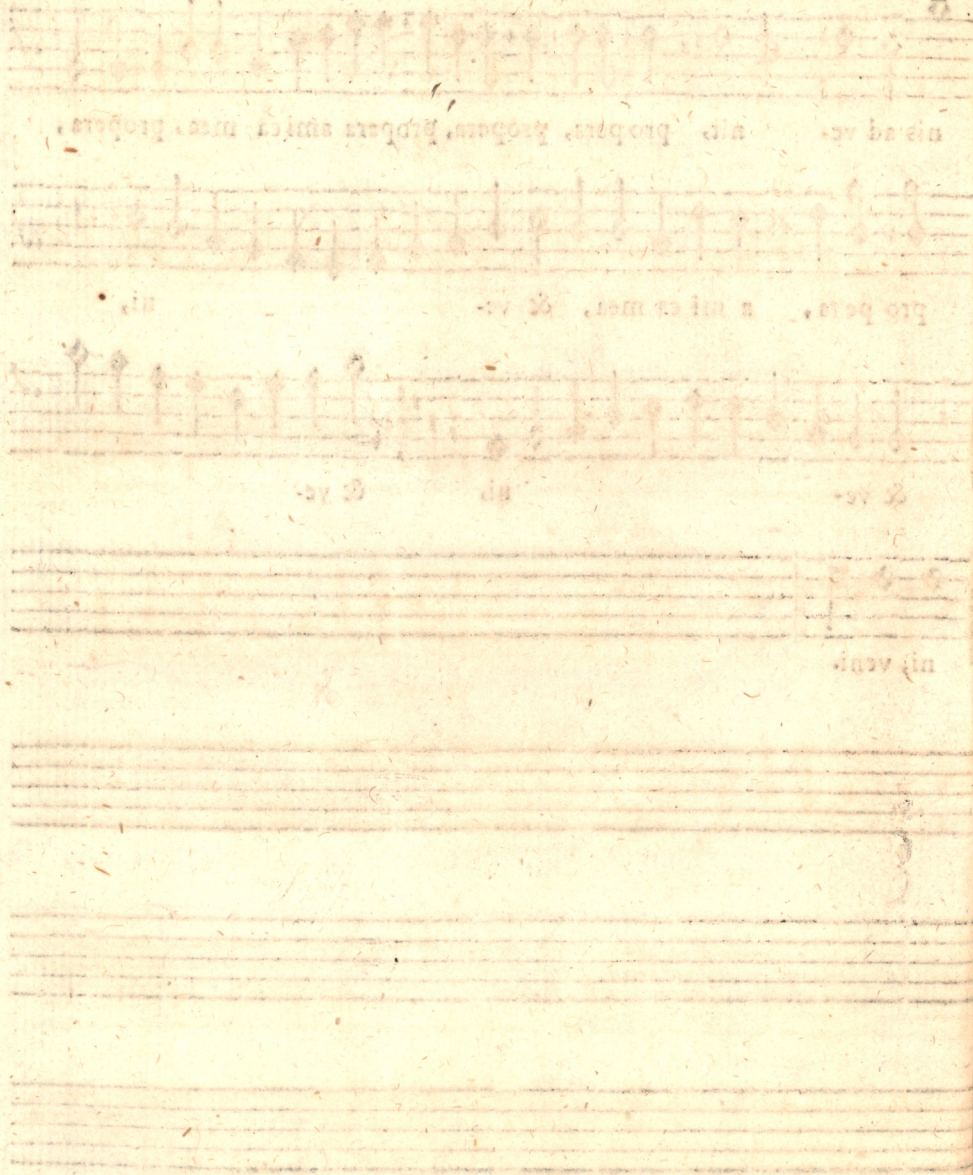
& ve-

ni,

& ve-

ni, veni.

ALTA



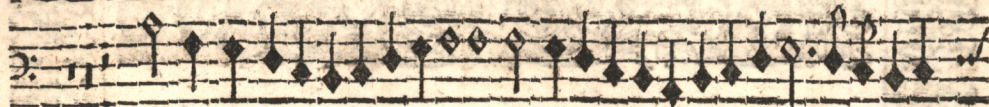
BASSUS.



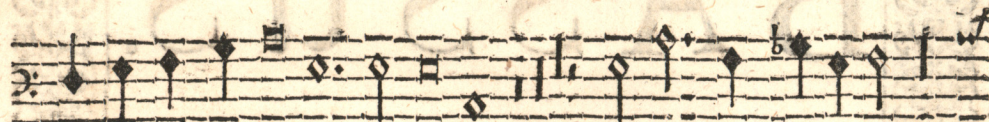
BASSUS à 5.



Vrge: propera, ij. amica mea propera,



& ve- ni, & ve-



ni, & ve ni, Iam hys transi it,



im ber a- biit, imber abi it, im- ber



a bi it, & recessit, & recessit, & re cessit, flores ap pa ru e-



runt in ter ra nostra. tempus pu ta ti onis adve- nit.

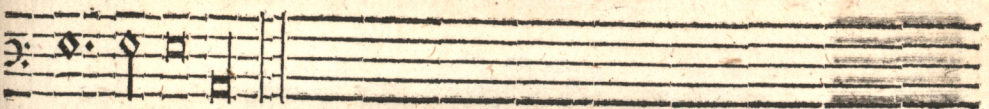
BASSUS à 5.



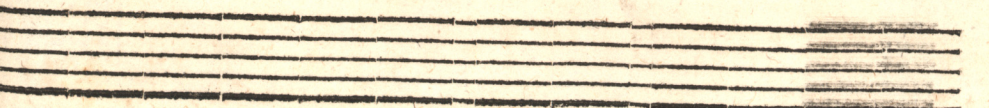
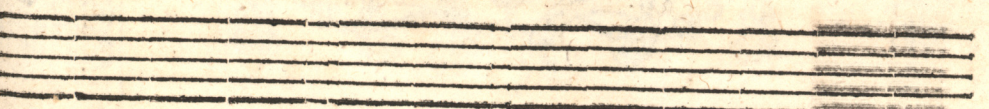
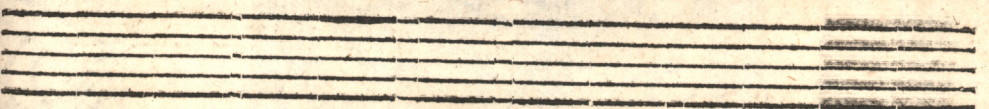
propera, ij, amica mea, propera, & ve-



ni, & ve



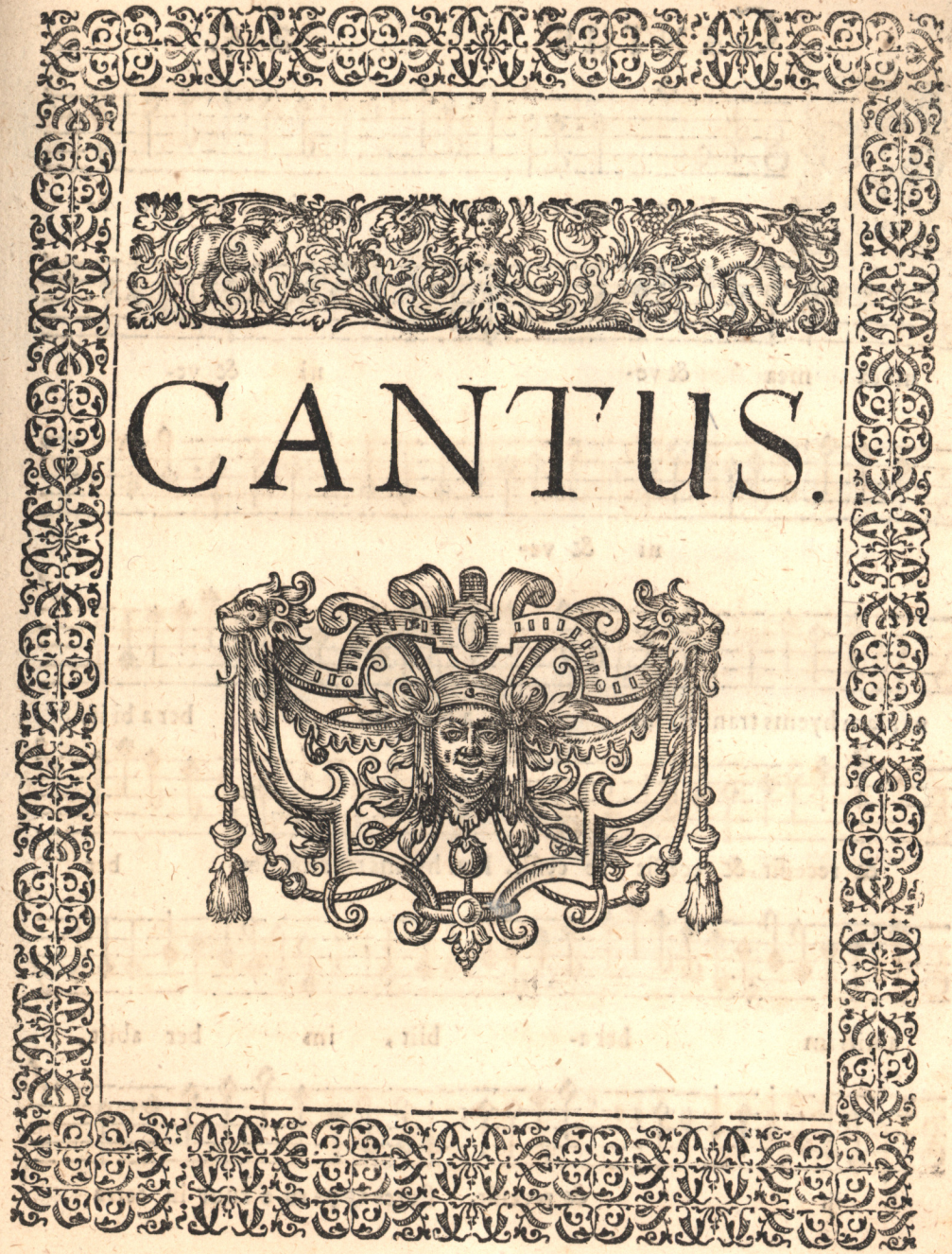
ni, & ve ni.



Propertius, in amica mea, Propertius, in

in G. ve

in G. ve

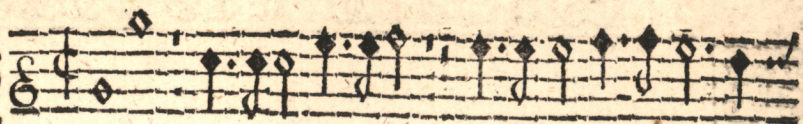


CANTUS.



CANTUS

à 5.



Virge pro pera propera ij. propera a-



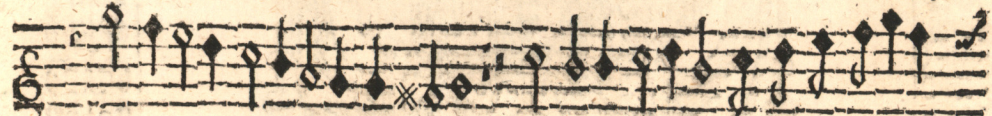
mica mea & ve- ni & ve-



ni & ve-



ni, Iam hyems transit, im ber abiit, im ber abiit,



& recessit, & recessit recessit, Iam hyems transit, im- ber



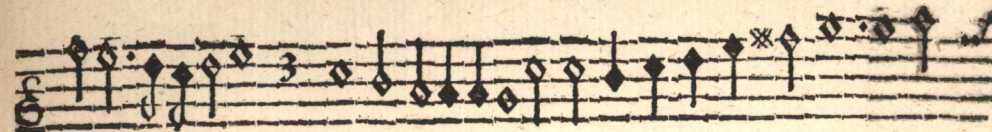
abiit, im ber a- biit, im ber abiit,



ij. & recessit, flores apparu e runt in terra

CANTUS

à 5.



no- stra, tempus puta tio nis adve nit, tempus



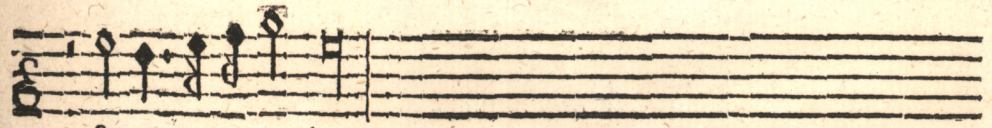
puta ti onis ad ve- nit Surge, propera, propera



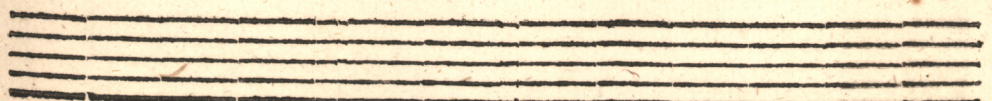
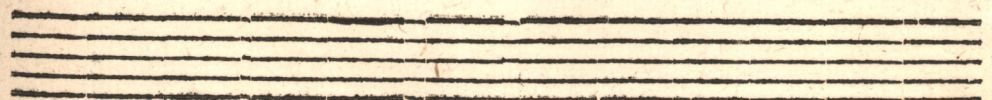
a mi ca mea propera ij. a mi ca mea, & veni,



& ve- ni, & ve ni,



& ve- ni.



CANTUS

The left page of the manuscript features several staves of musical notation. The top staff is labeled 'CANTUS'. Below it, there are several lines of music with corresponding lyrics written in a cursive script. The notation is somewhat faded and difficult to read.

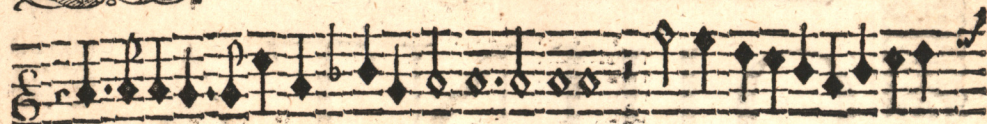
QUINTA
VOX.

The right page is a title page for 'QUINTA VOX'. It is framed by a decorative border of repeating floral and scrollwork motifs. At the top center, there is a horizontal decorative vignette. Below it, the title 'QUINTA VOX.' is printed in large, bold, serif capital letters. At the bottom center, there is a vertical decorative vignette featuring a woman's face with elaborate floral and leafy decorations.

QUINTA VOX à 5.



Urge propera pro pe ra a mica mea,



propera ij. a mica me a & veni & ve-



ni & ve- ni & ve-



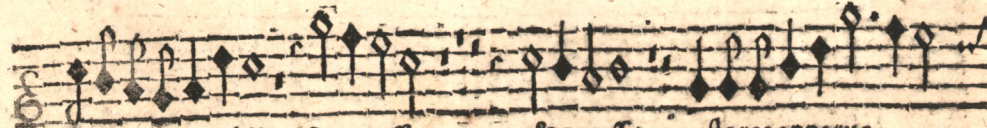
ni, iam hyems tranſiit, im ber a- bi-



it, & reſſit ij. re ceſſit jam hyems tranſiit



im- ber a- biit im- ber



biit & reſſit & reſſit flores apparue-

QUINTA VOX à 5.



runt in terra noſtra, tempus putationis adve- nit, ij.

Rothsch. B.



Surge propera ij. ij. ij.



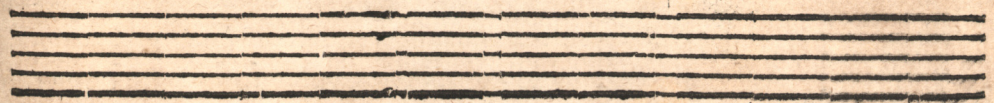
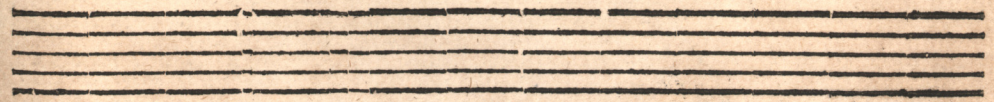
amica mea & ve- ni & ve-



ni & ve-



ni.



Ms. 193A/245

