

# INSECTA MUNDI

A Journal of World Insect Systematics

---

**0374**

Description of *Protumida insularis*, a new genus and species of the tribe  
Desmiphorini (Coleoptera, Cerambycidae, Lamiinae) from Panama

Miguel A. Monné  
Museu Nacional, Universidade Federal do Rio de Janeiro  
Quinta da Boa Vista, São Cristóvão, 20940-040  
Rio de Janeiro, RJ, Brazil

James E. Wappes  
American Coleoptera Museum  
8734 Paisano Pass  
San Antonio, TX 78255, USA

Date of Issue: September 5, 2014

Miguel A. Monné and James E. Wappes  
Description of *Protumida insularis*, a new genus and species of the tribe Desmiphorini  
(Coleoptera, Cerambycidae, Lamiinae) from Panama  
Insecta Mundi 0374: 1–4

ZooBank Registered: urn:lsid:zoobank.org:pub:843693A1-F5AE-4E3F-BB7D-F8A266D78930

**Published in 2014 by**

Center for Systematic Entomology, Inc.  
P. O. Box 141874  
Gainesville, FL 32614-1874 USA  
<http://centerforsystematicentomology.org/>

**Insecta Mundi** is a journal primarily devoted to insect systematics, but articles can be published on any non-marine arthropod. Topics considered for publication include systematics, taxonomy, nomenclature, checklists, faunal works, and natural history. **Insecta Mundi** will not consider works in the applied sciences (i.e. medical entomology, pest control research, etc.), and no longer publishes book reviews or editorials. **Insecta Mundi** publishes original research or discoveries in an inexpensive and timely manner, distributing them free via open access on the internet on the date of publication.

**Insecta Mundi** is referenced or abstracted by several sources including the Zoological Record, CAB Abstracts, etc. **Insecta Mundi** is published irregularly throughout the year, with completed manuscripts assigned an individual number. Manuscripts must be peer reviewed prior to submission, after which they are reviewed by the editorial board to ensure quality. One author of each submitted manuscript must be a current member of the Center for Systematic Entomology.

**Chief Editor:** Paul E. Skelley, e-mail: [insectamundi@gmail.com](mailto:insectamundi@gmail.com)  
**Head Layout Editor:** Eugenio H. Nearn  
**Editorial Board:** J. H. Frank, M. J. Paulsen, Michael C. Thomas  
**Review Editors:** Listed on the **Insecta Mundi** webpage

**Manuscript Preparation Guidelines and Submission Requirements** available on the **Insecta Mundi** webpage at: <http://centerforsystematicentomology.org/insectamundi/>

**Printed copies (ISSN 0749-6737) annually deposited in libraries:**

CSIRO, Canberra, ACT, Australia  
Museu de Zoologia, São Paulo, Brazil  
Agriculture and Agrifood Canada, Ottawa, ON, Canada  
The Natural History Museum, London, UK  
Muzeum i Instytut Zoologii PAN, Warsaw, Poland  
National Taiwan University, Taipei, Taiwan  
California Academy of Sciences, San Francisco, CA, USA  
Florida Department of Agriculture and Consumer Services, Gainesville, FL, USA  
Field Museum of Natural History, Chicago, IL, USA  
National Museum of Natural History, Smithsonian Institution, Washington, DC, USA  
Zoological Institute of Russian Academy of Sciences, Saint-Petersburg, Russia

**Electronic copies (Online ISSN 1942-1354, CDROM ISSN 1942-1362) in PDF format:**

Printed CD or DVD mailed to all members at end of year. Archived digitally by Portico.  
Florida Virtual Campus: <http://purl.fcla.edu/fcla/insectamundi>  
University of Nebraska-Lincoln, Digital Commons: <http://digitalcommons.unl.edu/insectamundi/>  
Goethe-Universität, Frankfurt am Main: <http://nbn-resolving.de/urn/resolver.pl?urn:nbn:de:hebis:30:3-135240>

**Copyright** held by the author(s). This is an open access article distributed under the terms of the Creative Commons, Attribution Non-Commercial License, which permits unrestricted non-commercial use, distribution, and reproduction in any medium, provided the original author(s) and source are credited. <http://creativecommons.org/licenses/by-nc/3.0/>

**Layout Editor for this article:** Eugenio H. Nearn

---

---

Description of *Protumida insularis*, a new genus and species of the tribe Desmiphorini (Coleoptera, Cerambycidae, Lamiinae) from Panama

Miguel A. Monné

Museu Nacional, Universidade Federal do Rio de Janeiro  
Quinta da Boa Vista, São Cristóvão, 20940–040  
Rio de Janeiro, RJ, Brazil  
monne@uol.com.br

James E. Wappes

American Coleoptera Museum  
8734 Paisano Pass  
San Antonio, TX 78255, USA  
wappes@earthlink.net

**Abstract.** A new desmiphorine species belonging to a new genus, *Protumida insularis*, **new genus and new species** (Coleoptera, Cerambycidae, Lamiinae), is described from Panama.

**Key words.** Desmiphorini, Neotropical, new genus, new species, taxonomy.

**Resumen.** Una nueva especie de Desmiphorini perteneciente a un nuevo género, *Protumida insularis*, **género nuevo y especie nueva** (Coleoptera, Cerambycidae, Lamiinae), es descrita de Panamá.

**Palabras claves.** Desmiphorini, región neotropical, nuevo género, nueva especie, taxonomía.

## Introduction

The tribe Desmiphorini (Cerambycidae, Lamiinae) in the Neotropical region currently consists of 74 genera and 505 species (Monné 2014). Here we propose a new genus and species, *Protumida insularis*, and discuss the differences between it and two genera, *Coeloprocta* Aurivillius, 1926 and *Anisopeplus* Melzer, 1934 with a similar, robust and broad cylindrical body shape.

## Materials and Methods

Specimens from the following museums were used in this study and also serve as depositories for type material:

**ACMT** — American Coleoptera Museum (James E. Wappes), San Antonio, TX, USA.

**MCZN** — Museum of Comparative Zoology, Harvard University, Cambridge, MA, USA.

**MNRJ** — Museu Nacional, Universidade Federal do Rio de Janeiro, Rio de Janeiro, RJ, Brazil.

**USNM** — National Museum of Natural History, Smithsonian Institution, Washington, DC, USA.

## *Protumida* Monné and Wappes, new genus

**Type species.** *Protumida insularis* Monné and Wappes, new species, here designated.

**Description. Head.** Deflexed, broad, convex dorsally, flattened anteriorly with vertical frons, densely covered with grayish-white, appressed pubescence. Median frontal line extending from clypeal margin to between eye lobes. Eyes coarsely faceted, deeply notched, lower lobe about twice the height of the gena below it; lobes connected by 1–2 rows of ommatidia, partially covered by pubescence in the connection; upper lobes separated by about twice their greatest width. Antennae with 11 antennomeres, covered

with dense appressed pubescence. Scape cylindrical, not enlarged apically, without cicatrix, extending to posterior fourth of pronotum; antennomere III one and one-half times the length of the scape.

**Thorax.** Densely pubescent. Prothorax with rounded lateral prominences, provided with several glabrous minute granules. Pronotum with anteromedial and posteromedial prominences each side of the middle, limited anteriorly and posteriorly by transverse sulcus; slightly constricted before anterior and posterior margins, anterior constriction with single row of punctures, posterior constriction without row of punctures. Prosternal process one-third times width of procoxa, projected behind by small tubercle. Procoxal cavities closed. Mesosternum covered with long tawny hairs; mesosternal process as wide as mesocoxal cavity, with minute tubercle in anterior margin. Mesocoxal cavities open externally to epimera. Metasternum covered with appressed tawny pubescence similar to those of the abdomen.

**Elytra.** Covered with grayish pubescence; humeri with slightly projecting, minute, rounded tubercle; epipleuron subvertical. Basal third of elytra with oblique carina from humeri to suture, provided medially with glabrous longitudinal crest, armed with backward projecting, obtuse tooth. Elytral apices truncate, without projections.

**Legs** mostly uniformly pubescent with appressed grayish hairs; femora fusiform; mesotibiae lacking external preapical groove; first metatarsal segment as long as the remaining tarsal segments together; tarsal claws divaricate.

**Etymology.** Latin adjective referring to the protuberant and gibbous body. Gender feminine.

**Remarks.** The characters listed by Breuning (1974) to define the tribe Desmiphorini (Rhodopinini *sensu* Breuning): scape with or without cicatrix, pronotum with or without lateral tubercles, metepisterna narrowed, mesocoxal cavities open or closed to epimera, mesotibiae with or without external sinus, are contradictory and useless with only “the tarsal claws divaricate” making sense in his diagnosis. *Protumida* is placed in the tribe Desmiphorini based on a combination of characters: tarsal claws divaricate, middle tibiae without an external sinus, and mesocoxal cavities open externally to epimera. Most desmiphorine genera are cylindrical or subcylindrical and previously only two genera (*Coeloprocta* Aurivillius, 1926 and *Anisopeplus* Melzer, 1934) have the body robust and thick (averaging 1.1 to 1.4 times elytral length to humeral width). *Protumida* differs from *Coeloprocta* and *Anisopeplus* by the rounded lateral prominences of the prothorax, elytra with an oblique carina from humeri to suture, provided medially with a glabrous longitudinal crest, projected behind in an obtuse tooth, and humeri with minute, slightly projecting, rounded tubercle; in *Coeloprocta* and *Anisopeplus* the prothorax is armed laterally with prominent conical tubercles, the elytra lack oblique carina, the basal crest is rounded and the humeri are distinctly, acutely tuberculate.

### *Protumida insularis*, new species

(Figures 1–2)

**Remarks.** As generic characters are applicable to the new species, they are not repeated in the following description.

**Description: Male.** Antennae longer than body, extending beyond apices by four antennomeres; scape mottled with black glabrous punctures, covered in mostly ashy pubescence; integument slightly darker at apical half of antennomeres IV–XI; antennomere XI appendiculate. Elytra with on oblique post-medial line of oval patches of brownish pubescence, from lateral margin to suture at apical third, several longitudinal rows (> ten) of small setose punctures on most of dorsal surface, basal fourth with widely spaced pubescent granules. Fifth urotergite transversely truncated at apex; fifth urosternite rounded in the extremity. Legs with long sparse hairs, denser in the ventral face of meso- and metatibiae.

**Female.** Antennae extending beyond apices by two antennomeres; antennomere XI not appendiculate. Fifth urotergite transversely truncated at apex; fifth urosternite with distal margin rounded.

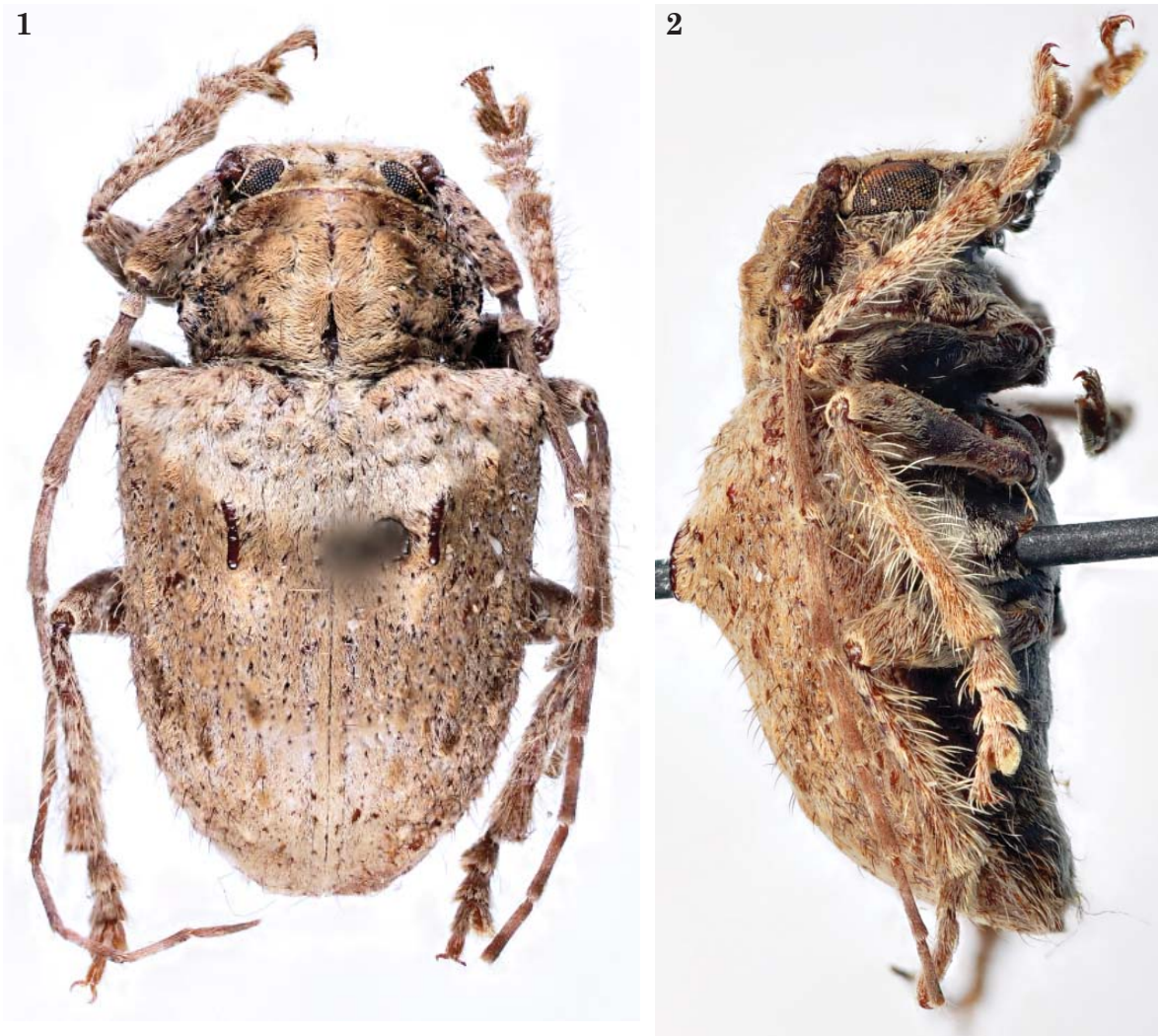
**Dimensions in mm.** (male/female). Total length, 7.1–10.5/6.3–11.5; prothorax length, 1.9–2.6/1.7–2.7; greatest prothorax width, 2.8–4.7/2.5–4.2; elytral length, 5.2–7.5/4.2–7.5; humeral width, 4.3–6.0/3.6–6.3.

**Etymology.** The name is a reference to Barro Colorado Island, Panama, the locality where most of the specimens in the type series were collected.

**Type material.** Holotype male, PANAMA: Barro Colorado Island, 21.I.1959, Panama Zool. Exped. (1959), H. S. Dybas col., at light. (USNM). Paratypes (29): Panama: Bayano, 20 km W Ipiti, 3 males, 2 females, 20-23.IV.1993, J. Wappes col. (ACMT). Panama: Barro Colorado Island, 2 males, female, 31.XII.1940, R. W. Cooper col. (MNRJ), 2 females, 2.I.1941, same collector (USNM), male, 18-28.IV.1964, W.D. & S. S. Duckworth col. (USNM), female, 1-9.V.1964, same collectors (USNM), 3 females, 25-28.III.1965, same collectors (USNM), male, 3 females, J. A. Griswold Jr. col. (MNRJ), male, 1934, M. Bates col. (MCZN), 2 males, female, 1935, same collector (MCZN), female, 27.II.1963, R. D. Akre col. (MNRJ), female, 2.III.1963, CW & ME Rettenmeyer col. (USNM), 2 males, female, 21.III.1963, same collectors (USNM), male, 20.IV.1963, same collectors (USNM).

### Acknowledgments

We are grateful to Juan Pablo Botero (MNRJ) who kindly took the photographs for this publication and to Eugenio H. Nearn (Purdue University, West Lafayette, IN, USA) and Steven W. Lingafelter (Systematic Entomology Lab, USNM) for providing quality reviews of the pre-publication manuscript.



**Figure 1-2.** *Protumida insularis*, n. sp., holotype male, adult habitus. 1) Dorsal view. 2) Lateral view.

**Literature Cited**

- Aurivillius, C. 1926.** Cerambyciden gesammelt von Dr. A. Roman in Brasilien in den Jahren 1923–1924. Arkiv för Zoologi, 18B, 14: 1–6.
- Breuning, S. 1974.** Révision des Rhodopinini américains. Studia Entomologica 17, 1–4: 1–210.
- Melzer, J. 1934.** Longicórneos americanos, principalmente do Brasil, novos ou pouco conhecidos. Arquivos do Instituto Biológico 5: 213–244.
- Monné, M. A. 2014.** Catalogue of the Cerambycidae (Coleoptera) of the Neotropical Region. 1–971. Available from: [http://www.cerambyxcat.com/Parte2\\_Lamiinae.pdf](http://www.cerambyxcat.com/Parte2_Lamiinae.pdf) (Accessed on 8/2014.)

**Received August 26, 2014; Accepted August 28, 2014.**  
**Review Editor Paul Skelley.**