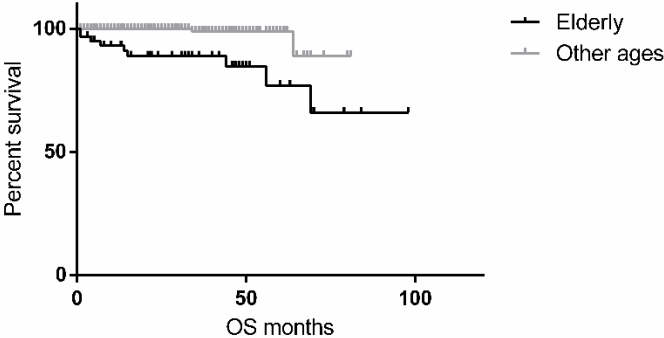


Supplementary Figure



**Figure S1.** Kaplan-Meier curve showing the comparison of overall survival (OS) in patients of other ages and elderly (mean 58.4 vs. 63.5 months; Log-rank test:  $p < 0.0001$ ). This finding is not surprising, given the fact that life expectancy in general is shorter for a person  $\geq 70$  years.