

SUPPLEMENTAL MATERIAL

Korhonen et al., <http://www.jem.org/cgi/content/full/jem.20082150/DC1>

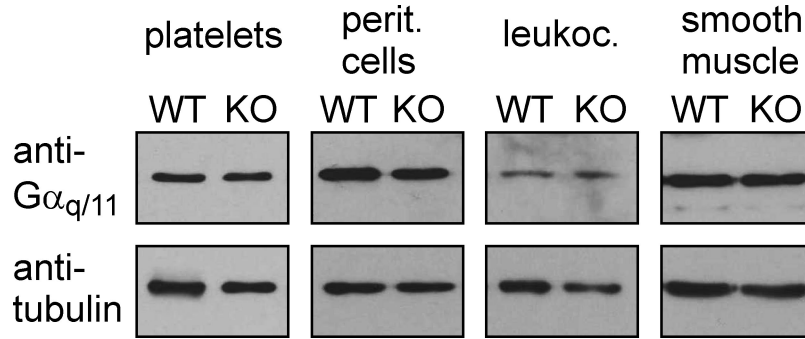


Figure S1. Expression of G α_q /G α_{11} in various nonendothelial cells prepared from WT and EC-G α_q /G α_{11} -KO (KO) mice. Lysates from platelets, peritoneal cells, leukocytes, and vascular smooth muscle cells prepared from tamoxifen-treated WT and EC-G α_q /G α_{11} -KO (KO) mice were analyzed by Western blotting with antibodies directed against G α_q /G α_{11} and anti- α -tubulin.

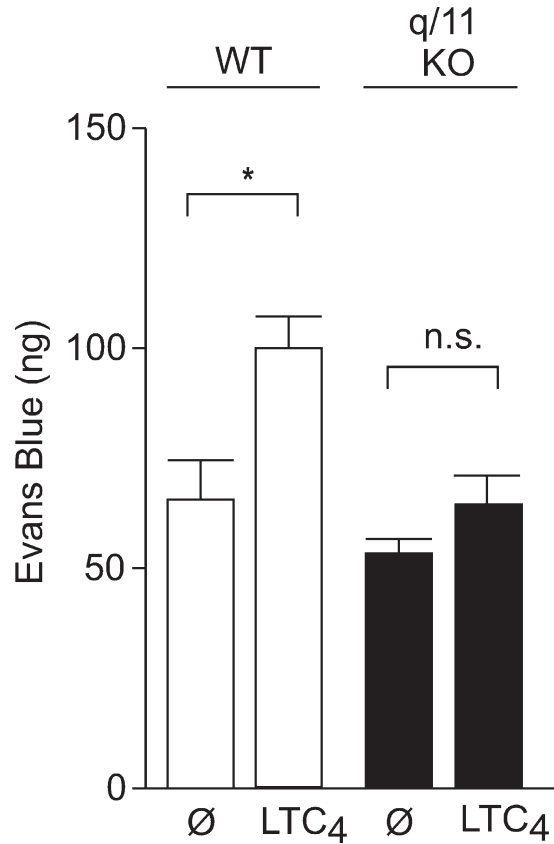


Figure S2. Effect of leukotriene C₄ (LTC₄) on endothelial permeability in WT and EC-G α_q /G α_{11} -KO mice (q/11-KO). Evans blue extravasation was determined in mice after intracutaneous injection of 20 μ l of buffer or 0.5 ng/ μ l LTC₄. Shown are the amounts of Evans blue determined in skin explants. Values are means \pm SEM. *, $p < 0.05$; n.s., nonsignificant (compared to basal).