



ELSEVIER

Available online at [www.sciencedirect.com](http://www.sciencedirect.com)

SCIENCE @ DIRECT®

Physics Letters B 547 (2002) 7–14

PHYSICS LETTERS B

[www.elsevier.com/locate/npe](http://www.elsevier.com/locate/npe)

# Particle ratios at RHIC: Effective hadron masses and chemical freeze-out

D. Zschesche<sup>a</sup>, S. Schramm<sup>b</sup>, J. Schaffner-Bielich<sup>c</sup>, H. Stöcker<sup>a,d</sup>, W. Greiner<sup>a</sup><sup>a</sup> *Institut für Theoretische Physik, Robert Mayer Str. 8-10, D-60054 Frankfurt am Main, Germany*<sup>b</sup> *Argonne National Laboratory, 9700 S. Cass Avenue, Argonne, IL 60439, USA*<sup>c</sup> *Department of Physics, Columbia University, New York, NY 10027, USA*<sup>d</sup> *Laboratoire de Physique Subatomique et des Technologies Associées, University of Nantes, IN2P3/CNRS, Ecole des Mines de Nantes, 4 rue Alfred Kastler, F-44072 Nantes Cedex 03, France*

Received 18 September 2002; accepted 25 September 2002

Editor: P.V. Landshoff

## Abstract

The measured particle ratios in central heavy-ion collisions at RHIC-BNL are investigated within a chemical and thermal equilibrium chiral  $SU(3)$   $\sigma$ - $\omega$  approach. The commonly adopted noninteracting gas calculations yield temperatures close to or above the critical temperature for the chiral phase transition, but without taking into account any interactions. Contrary, the chiral  $SU(3)$  model predicts temperature and density dependent effective hadron masses and effective chemical potentials in the medium and a transition to a chirally restored phase at high temperatures or chemical potentials. Three different parametrizations of the model, which show different types of phase transition behaviour, are investigated. We show that if a chiral phase transition occurred in those collisions, “freezing” of the relative hadron abundances in the symmetric phase is excluded by the data. Therefore, either very rapid chemical equilibration must occur in the broken phase, or the measured hadron ratios are the outcome of the dynamical symmetry breaking. Furthermore, the extracted chemical freeze-out parameters differ considerably from those obtained in simple noninteracting gas calculations. In particular, the three models yield up to 35 MeV lower temperatures than the free gas approximation. The in-medium masses turn out to differ up to 150 MeV from their vacuum values.

© 2002 Elsevier Science B.V. Open access under [CC BY license](https://creativecommons.org/licenses/by/4.0/).

## 1. Introduction

Thermodynamical equilibrium calculations of particle production in high energy particle- and nuclear collisions have been carried out for a long time [1–11]. Recently hadron abundances and particle ratios have

been measured in heavy-ion collisions from SIS, AGS, SPS to RHIC energies. These data have revived the interest in the extraction of temperatures and chemical potentials from thermal equilibrium “chemical” model analyses. The experimentally determined hadron ratios can be fitted well with straightforward noninteracting gas model calculations [4,6,9–13], if a sudden breakup of a thermalized source is assumed and once the subsequent feeding of the various channels by the

*E-mail address:* [ziesche@th.physik.uni-frankfurt.de](mailto:ziesche@th.physik.uni-frankfurt.de)  
(D. Zschesche).

strongly decaying resonances is taken into account. From the  $\chi^2$  freeze-out fits one has constructed a quite narrow band of freeze-out values in the  $T$ - $\mu_B$  plane (see, e.g., [12,13]). The extracted freeze-out parameters are fairly close to the phase transition curve for SPS and RHIC energies. However, when we are indeed so close to the phase transition or to a crossover as suggested by the data for  $T$  and  $\mu_B$ , we cannot afford to neglect the very in-medium effects we are after—and which, after all, do produce the phase transition. Thus, since noninteracting gas models neglect any kind of possible in-medium modifications they cannot yield information about the phase transition.

Therefore, we will employ below a relativistic selfconsistent chiral model of hadrons and hadron matter developed in [14–16]. This model can be used as a thermodynamically consistent effective theory or as a toy model, which embodies the restoration of chiral symmetry at high temperatures or densities. Therefore, the model predicts temperature and density dependent hadronic masses and effective chemical potentials, which have already been proposed and considered in [5,14,17–20]. Thus, using the chiral  $SU(3)$  model we can investigate, whether the freeze-out in fact takes place close to the phase transition boundary (if it exists) and if the extracted  $T$ ,  $\mu_B$  parameters are strongly model dependent. Depending on the chosen parameters and degrees of freedom different scenarios for the chiral phase change are predicted by the model: strong or weak first order phase transition or a crossover. The transitions take place around  $T_c = 155$  MeV [14,21], which is in qualitative agreement with lattice predictions [22] for the critical temperature for the onset of a deconfined phase which coincides with that of a chirally restored phase [23].

## 2. Model description

The chiral  $SU(3)$  model is presented in detail in [14,16]. We will briefly introduce the model here: we consider a relativistic field theoretical model of baryons and mesons built on chiral symmetry and broken scale invariance. The general form of the Lagrangian looks as follows:

$$\mathcal{L} = \mathcal{L}_{\text{kin}} + \sum_{W=X,Y,V,A,u} \mathcal{L}_{\text{BW}} + \mathcal{L}_{\text{VP}} + \mathcal{L}_{\text{vec}} + \mathcal{L}_0 + \mathcal{L}_{\text{SB}}. \quad (1)$$

$\mathcal{L}_{\text{kin}}$  is the kinetic energy term,  $\mathcal{L}_{\text{BW}}$  includes the interaction terms of the different baryons with the various spin-0 and spin-1 mesons (see [16] for details). The baryon masses are generated by both, the nonstrange  $\sigma$  ( $\langle q\bar{q} \rangle$ ) and the strange  $\zeta$  ( $\langle s\bar{s} \rangle$ ) scalar condensate.  $\mathcal{L}_{\text{VP}}$  contains the interaction terms of vector mesons with pseudoscalar mesons.  $\mathcal{L}_{\text{vec}}$  generates the masses of the spin-1 mesons through interactions with spin-0 fields, and  $\mathcal{L}_0$  gives the meson–meson interaction terms which induce the spontaneous breaking of chiral symmetry. It also includes a scale-invariance breaking logarithmic potential. Finally,  $\mathcal{L}_{\text{SB}}$  introduces an explicit symmetry breaking of the  $U(1)_A$ , the  $SU(3)_V$ , and the chiral symmetry. All these terms have been discussed in detail in [14,16].

The hadronic matter properties at finite density and temperature are studied in the mean-field approximation [24]. Then the Lagrangian (1) becomes

$$\mathcal{L}_{\text{BX}} + \mathcal{L}_{\text{BV}} = - \sum_i \bar{\psi}_i [g_{i\omega}\gamma_0\omega^0 + g_{i\phi}\gamma_0\phi^0 + m_i^*] \psi_i, \quad (2)$$

$$\begin{aligned} \mathcal{L}_{\text{vec}} &= \frac{1}{2}m_\omega^2 \frac{\chi^2}{\chi_0^2} \omega^2 + \frac{1}{2}m_\phi^2 \frac{\chi^2}{\chi_0^2} \phi^2 + g_4^4(\omega^4 + 2\phi^4), \\ \mathcal{V}_0 &= \frac{1}{2}k_0\chi^2(\sigma^2 + \zeta^2) - k_1(\sigma^2 + \zeta^2)^2 \\ &\quad - k_2\left(\frac{\sigma^4}{2} + \zeta^4\right) - k_3\chi\sigma^2\zeta + k_4\chi^4 \\ &\quad + \frac{1}{4}\chi^4 \ln \frac{\chi^4}{\chi_0^4} - \frac{\delta}{3}\chi^4 \ln \frac{\sigma^2\zeta}{\sigma_0^2\zeta_0}, \end{aligned} \quad (3)$$

$$\begin{aligned} \mathcal{V}_{\text{SB}} &= \left(\frac{\chi}{\chi_0}\right)^2 \left[ m_\pi^2 f_\pi \sigma \right. \\ &\quad \left. + \left( \sqrt{2} m_K^2 f_K - \frac{1}{\sqrt{2}} m_\pi^2 f_\pi \right) \zeta \right], \end{aligned} \quad (4)$$

where  $m_i$  is the effective mass of the hadron species  $i$ .  $\sigma$  and  $\zeta$  correspond to the scalar condensates,  $\omega$  and  $\phi$  represent the nonstrange and the strange vector field respectively, and  $\chi$  is the scalar–isoscalar dilaton field, which mimics the effects of the gluon condensate [25]. Only the scalar ( $\mathcal{L}_{\text{BX}}$ ) and the vector meson terms

( $\mathcal{L}_{\text{BV}}$ ) contribute to the baryon–meson interaction, since for all other mesons the expectation value vanishes in the mean-field approximation. The grand canonical potential  $\Omega$  per volume  $V$  as a function of chemical potential  $\mu$  and temperature  $T$  can be written as:

$$\frac{\Omega}{V} = -\mathcal{L}_{\text{vec}} - \mathcal{L}_0 - \mathcal{L}_{\text{SB}} - \mathcal{V}_{\text{vac}} \mp T \sum_i \frac{\gamma_i}{(2\pi)^3} \int d^3k \left[ \ln \left( 1 \pm e^{-\frac{1}{T}[E_i^*(k) - \mu_i^*]} \right) \right], \quad (5)$$

with the baryons (top sign) and mesons (bottom sign). The vacuum energy  $\mathcal{V}_{\text{vac}}$  (the potential at  $\rho_B = 0$ ,  $T = 0$ ) has been subtracted in order to get a vanishing vacuum energy.  $\gamma_i$  denote the hadronic spin-isospin degeneracy factors. The single particle energies are  $E_i^*(k) = \sqrt{k_i^2 + m_i^{*2}}$  and the effective chemical potentials read  $\mu_i^* = \mu_i - g_{i\omega}\omega - g_{\phi i}\phi$ .

The mesonic fields are determined by extremizing  $\frac{\Omega}{V}(\mu, T = 0)$ . The density of particle  $i$  can be calculated by differentiating  $\Omega$  with respect to the corresponding chemical potential  $\mu_i$ . This yields:

$$\rho_i = \gamma_i \int \frac{d^3k}{(2\pi)^3} \left[ \frac{1}{\exp[(E_i^* - \mu_i^*)/T] \pm 1} \right]. \quad (6)$$

All other thermodynamic quantities can also be obtained from the grand canonical potential. In the present calculation the lowest lying baryonic octet and decuplet and the lowest lying mesonic nonets are coupled to the relativistic mean fields. Depending on the coupling of the baryon resonances (the decuplet) to the field equations, the model shows a first order phase transition or a crossover (for details see [21]). We will use three different parameter sets: parameter set CI treats the members of the baryon decuplet as free particles, which yields a crossover behaviour. Parameter sets CII and CIII include also the (anti)-baryon decuplet as sources for the meson field equations. They differ by an additional explicit symmetry breaking for the baryon resonances along the hypercharge direction, as described in [16] for the baryon octet. This is included in CII and not used in CIII. This leads to a weak first order phase transition at  $\mu = 0$  for CII and two first order phase transitions for CIII, which can be viewed as one strong first order phase transition. Heavier resonances up to  $m = 2$  GeV are always included as free particles. The resulting baryon masses for CI and CIII are shown in Fig. 1. We observe a continuous decrease of the baryon masses for CI starting at  $T \approx 150$  MeV. In contrast, CIII shows two jumps around  $T = 155$  MeV. The critical energy densities, the entropy densities and the transition temperatures

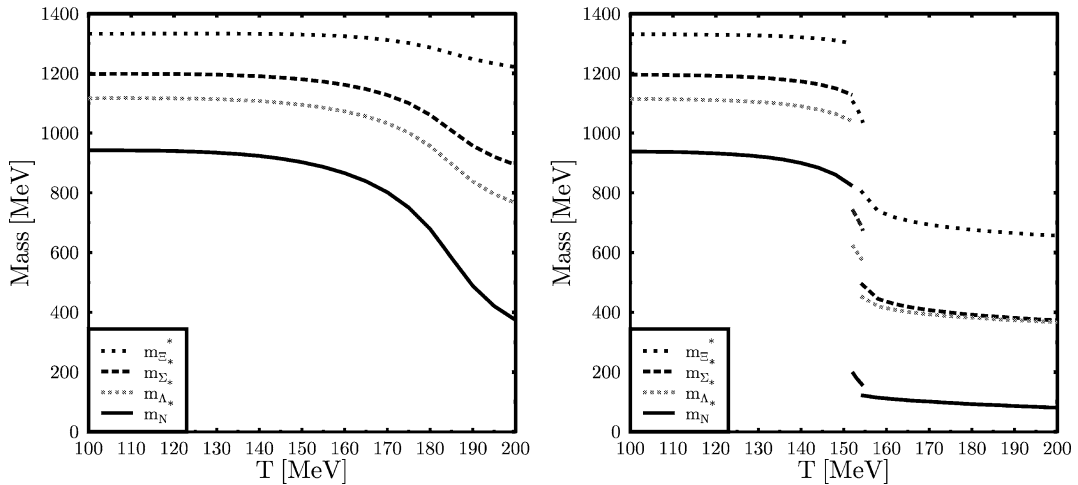


Fig. 1. Baryon octet masses as function of temperature for vanishing chemical potential. Left CI, right CIII. Note the continuous change of the masses starting around  $T = 150$  MeV. In contrast for CIII two phase-transitions occur around  $T_c \approx 155$  MeV. These result from the separate jumps in the nonstrange ( $\sigma$ ) and the strange ( $\zeta$ ) condensate.

Table 1

Energy density, entropy density and phase transition temperatures for CII, CIII,  $\mu_q = \mu_s = 0$ . The (–), (+) signs refer to an approach to the phase transition from below and above, respectively.  $T_c$  denotes the phase transition temperature.  $\epsilon_0 = 138.45 \text{ MeV/fm}^3$  denotes the energy density of nuclear matter in the ground state

	$\epsilon^-/\epsilon_0$	$\epsilon^+/\epsilon_0$	$s^- (\text{fm}^{-3})$	$s^+ (\text{fm}^{-3})$	$T_c (\text{MeV})$
CII	2.8	7.2	2.8	6.7	156.3
CIII—1st PT	2.3	8.3	2.4	7.9	153.4
CIII—2nd PT	10.5	17.1	9.8	15.7	155.5

for  $\mu_q = \mu_s = 0$  ( $\mu_q = \mu_B/3$ ,  $\mu_s = \mu_B/3 - \mu_S$ ) are specified in Table 1.

### 3. Particle ratios in the chiral $SU(3) \times SU(3)$ model

Since the chiral  $SU(3)$  model predicts density and temperature dependent hadronic masses and effective potentials, in contrast to noninteracting models, the resulting particle ratios and therefore the deduced freeze-out temperatures and baryon chemical potentials are expected to change [26]. Hence in the following, we identify combinations of temperatures and chemical potentials that fit the observed particle ratios in the chiral model. In all calculations the value of the strange chemical potential  $\mu_s$  is chosen such that the net strangeness  $f_s = 0$ . We are looking for minima of  $\chi^2$  with

$$\chi^2 = \sum_i \frac{(r_i^{\text{exp}} - r_i^{\text{model}})^2}{\sigma_i^2}. \quad (7)$$

Here  $r_i^{\text{exp}}$  is the experimental ratio,  $r_i^{\text{model}}$  is the ratio calculated in the model and  $\sigma_i$  represents the error in the experimental data points. We use the same ratios as in [6]:  $\bar{p}/\bar{p}$ ,  $\bar{\Lambda}/\bar{\Lambda}$ ,  $\bar{\Xi}/\bar{\Xi}$ ,  $\pi^-/\pi^+$ ,  $K^-/K^+$ ,  $K^-/\pi^-$ ,  $K_0^*/h^-$ ,  $\bar{K}_0^*/h^-$ .

Even though the only parameters in a thermal and chemical equilibrium approach on first sight are the temperature and the baryon chemical potential, there exist further unknowns: on the one hand, some decays of high mass resonances are not well known and on the other hand the effect of weak decays in the experiments strongly depends on the detector geometry and on the reconstruction efficiency of the experiments. The feeding correction from the strong and electromagnetic decays of the hadronic resonances used here employs the procedure used

in the UrQMD model [27,28]. Weak decays are not considered here. We rather focus on the principal question whether an interacting chiral  $SU(3)$  approach with  $m^* \neq m_{\text{vac}}$  can at all describe the particle yields at RHIC. Fine tuning of the  $\chi^2$  by adjustment of the weak decay scheme is not our intention. Even though it has been shown [29] that  $\chi^2$  values may be improved by including weak decays.

To compare the quality of the fits obtained in the chiral model with those obtained from the noninteracting gas approach, we set all masses and chemical potentials contained in the chiral model to their vacuum values and again use the same UrQMD feeding procedure as for the interacting model. This yields the ideal gas denoted  $i g_{FFM}$ . We find that the resulting ideal gas ratios are not identical but comparable to those obtained in the literature [6,26,29,30]. The differences should only result from a different treatment of weak interactions and from the uncertainty in the decay scheme of high mass resonances.

### 4. Results for Au + Au collisions at RHIC

First, we find that a reasonable fit of the measured particle ratios at RHIC is possible in all three phase transition scenarios of the chiral model and the ideal gas case with comparable quality.

Second, the resulting freeze-out values depend on the model employed, i.e., crossover, weak first order, strong first order or free thermal gas.

Third, a reasonable description of the data is impossible above  $T_c$  in the models showing a first order phase transition. This shows that no direct freeze-out from the restored phase is observed.

Fig. 2 shows the value of  $\chi^2$  in the  $T-\mu_B$  plane for the crossover case and for the strong first order phase transition. We see that the best fit  $T-\mu_B$  values

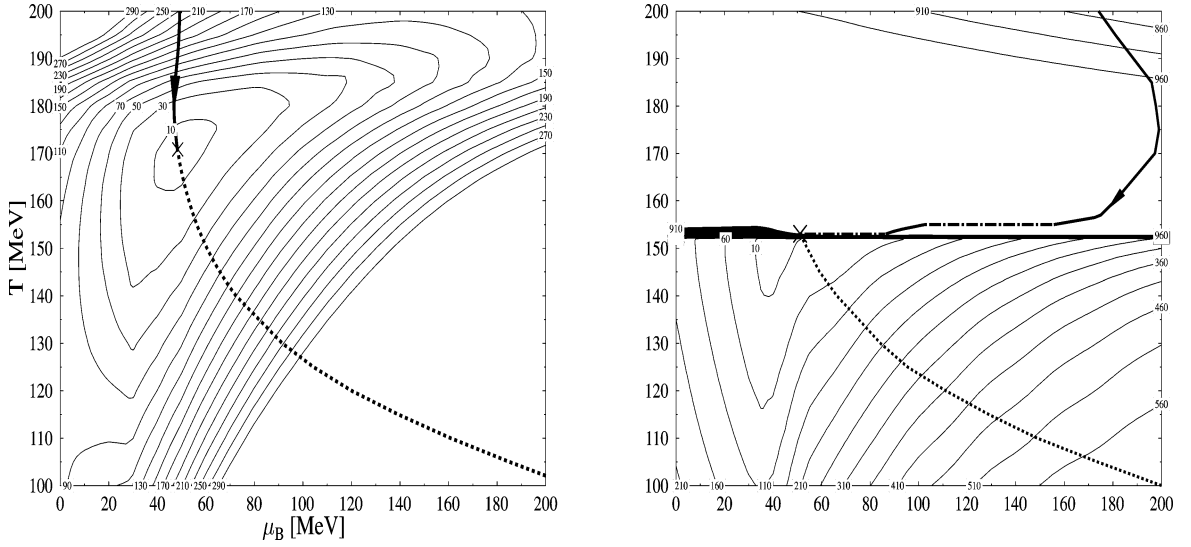


Fig. 2.  $\chi^2$  contours in the  $T$ - $\mu_B$  plane for CI (left) and CIII (right). Data are taken from [6]. The adiabatic path (constant entropy per net baryon  $S/A$ ), corresponding to expansive cooling of an ideal fluid, is also shown in the two cases. The dash-dotted lines in the right picture correspond to the path of the system along the phase transition boundary, i.e., the expansion in the mixed phases. The crosses depict the fitted freeze-out points.  $\mu_S$  is chosen such that the net strangeness  $f_s = 0$ .

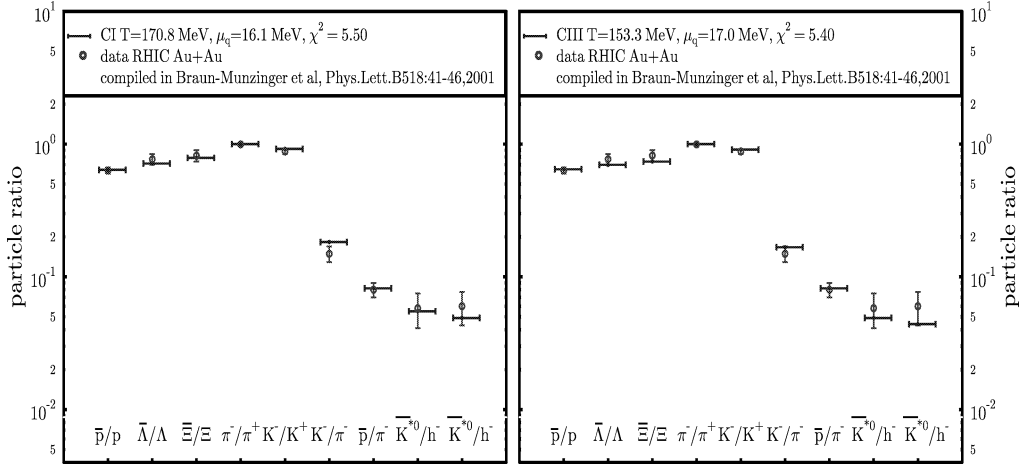


Fig. 3. Particle ratios calculated with CI (left) and CIII (right) compared to RHIC data as compiled in [6].

differ in both models. Furthermore, in the crossover case  $\chi^2$  is well behaved as a function of  $T$  and  $\mu_B$ . In contrast, the model with a strong first order phase transition shows a very steep increase of  $\chi^2$  at the phase transition boundary: the quality of the fit decreases drastically due to the jump of the effective masses at the phase transition boundary. Above  $T_c$  the  $\chi^2$  values are unacceptable,  $\chi^2 > 500$ .

The resulting best-fit particle ratios,  $\chi^2$ -values and thermodynamic quantities are shown in Table 2 and Fig. 3.

The  $\chi^2$  values for the chiral model are:  $\chi^2_{CI} = 5.50$ ,  $\chi^2_{CII} = 5.73$  and  $\chi^2_{CIII} = 5.40$ . Thus, all three parameter sets describe the data equally well. Furthermore, the agreement is as good as in the noninteracting gas calculation ( $\chi^2_{ig} = 5.72$  [6],  $\chi^2_{FFM} = 5.66$ ). The best

Table 2

Chiral fit of the particle ratios measured at RHIC at  $\sqrt{s} = 130$  GeV. Data and BMRS-fit taken from [6]

Au + Au	Experiment	CI	CII	CIII	$ig_{FFM}$	BMRS
$T_{\text{chem}}$ (MeV)		170.8	155.0	153.3	187.6	174.0
$\mu_{\text{chem}}^B$ (MeV)		48.3	54.6	51.0	44.1	46.0
$\mu_{\text{chem}}^S$ (MeV)		11.1	9.8	9.4	13.5	13.6
$\chi^2$		5.5	5.7	5.4	5.7	5.7
$\rho_{\text{had}}$ ( $\text{fm}^{-3}$ )		0.66	0.38	0.35	1.12	
$\rho_B + \rho_{\bar{B}}$ ( $\text{fm}^{-3}$ )		0.15	0.08	0.07	0.28	
$p$ (MeV/ $\text{fm}^3$ )		108	55	51	207	
$\epsilon$ (MeV/ $\text{fm}^3$ )		695	356	326	1324	
$E/A$ (MeV)		1053	937	931	1182	$\approx 1100$
$S/A$		157	164	177	142	
$\bar{p}/p$	0.65(7) [STAR], 0.64(8) [PHENIX]	0.640	0.648	0.652	0.629	0.629
	0.60(7) [PHOBOS], 0.61(6) [BRAHMS]					
$\bar{\Lambda}/\Lambda$	0.77(7) [STAR]	0.714	0.695	0.702	0.721	0.753
$\bar{\Xi}/\Xi$	0.82(8) [STAR]	0.787	0.731	0.743	0.834	0.894
$\pi^-/\pi^+$	1.00(2) [PHOBOS], 0.95(6) [BRAHMS]	1.000	1.000	1.000	1.000	1.007
$K^-/K^+$	0.88(5) [STAR], 0.78(13) [PHENIX]	0.919	0.914	0.915	0.916	0.894
	0.91(9) [PHOBOS], 0.89(7) [BRAHMS]					
$K^-/\pi^-$	0.15(2) [STAR]	0.183	0.168	0.168	0.179	0.145
$\bar{p}/\pi^-$	0.08(1) [STAR]	0.082	0.084	0.078	0.083	0.078
$\bar{K}_0^*/h^-$	0.058(17) [STAR]	0.055	0.049	0.049	0.046	0.032
$K_0^*/h^-$	0.060(17) [STAR]	0.049	0.044	0.044	0.041	0.037

fit  $T-\mu_B$  parameters vary quite considerably between the different models. The noninteracting gas calculation yields  $T = 187.6$  MeV and  $\mu_B = 44.1$  MeV. These freeze-out values can be compared to those obtained in other ideal gas calculations:  $T = 174$  MeV,  $\mu_B = 46$  MeV in [6],  $T = 165$  MeV,  $\mu_B = 41$  MeV in [30] and  $T = 190$  MeV,  $\mu_B = 45$  MeV in [31]. The crossover case in the interacting chiral model (CI) yields  $T = 170.8$  MeV,  $\mu_B = 48.3$  MeV. Very strong deviations are found for the models with a first order phase transition (CII, CIII): the freeze-out temperatures are  $T = 155$  MeV (CII) and  $T = 153.3$  MeV (CIII), more than 30 MeV lower than for  $ig_{FFM}$ . The fitted baryon chemical potentials  $\mu_B$  increase by about 7–10 MeV. These  $T-\mu_B$  pairs are very close to the phase boundary (CII) or even right on it (CIII) and are about 10 MeV higher than the values obtained at SPS-energies [32]. Mainly due to the different freeze-out temperatures the values of the corresponding thermodynamic quantities vary between the different approaches. However, the energy per particle  $E/A$  is approximately 1 GeV in all cases. This ‘unified freeze-out condition’ has already been proposed in [33].

The fact that the freeze-out appears right at the phase boundary or at crossover implies that there are large in-medium corrections, in particular, for the effective masses, a phenomenon observed already in [17]. The effective masses shown in Fig. 4 are shifted up to 15% from their vacuum values. However, all the interacting models show similar values for the effective mass of a given hadron. The strongest in-medium modifications are observed for the nonstrange baryons ( $\Delta m_i^*/m_i \approx 15\%$ ). Mesons and strange baryons show smaller changes of the effective masses, e.g., about 10% for  $\Lambda$ ,  $\pi$ ,  $K^*$ , about 5% for the Kaons and nearly no change for the  $\Xi$ 's.

These results, together with the steep  $\chi^2$  contours from Fig. 2, suggest that the relative particle abundances ‘freeze’ shortly after the spontaneous breaking of chiral symmetry. The success of our fit suggests extremely rapid chemical equilibration (through abundance-changing reactions) in the state with broken symmetry. Fig. 2 shows that the chemical composition of the hadronic system has to change substantially within a small temperature interval, just before freeze-out, even for the crossover transition (i.e., para-

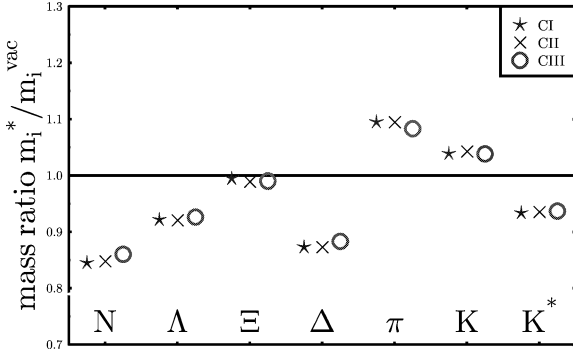


Fig. 4. Effective masses for the different interacting chiral models and the ideal gas (vacuum values) case. The differences among the interacting approaches are less than 2%.

meter set CI); for reference, we have indicated the dynamical path in the  $T-\mu_B$  plane corresponding to the expansion of a perfect fluid (i.e., with constant entropy per net baryon [34]). While  $2 \rightarrow n$  reactions are perhaps too slow to explain such rapid chemical equilibration [35,36],  $m \rightarrow n$  processes with several particles in the initial state may be important as well [37–40].

Alternatively, the appearance of chemical equilibrium right after the phase transition (or the crossover) to the state of broken chiral symmetry might just be the outcome of the dynamical symmetry breaking process itself [41], with statistical occupation of the various hadronic channels according to phase space [42–45]. If so, number-changing reactions in the broken phase need not proceed at a high rate. To test this picture experimentally, it might be useful to consider central collisions of small ions like protons or deuterons, at similar energy and particle densities in the central region as for central Au + Au. For systems of transverse extent comparable to the correlation lengths of the chiral condensates, the dynamical symmetry breaking process should be different from that in large systems (for example, the mean field approximation should not apply). The correlation lengths  $\xi_{\sigma,\zeta}$  are given by

$$\xi_{\sigma}^{-2} = \frac{\partial^2(\Omega/V)}{\partial\sigma^2}, \quad (8)$$

and accordingly for  $\xi_{\zeta}$ . We evaluate the curvature of the thermodynamical potential at the global minimum and for  $T$ ,  $\mu_B$ ,  $\mu_S$  at the freeze-out point. For parameter sets CI, CII, CIII we obtain  $\xi_{\sigma} = 0.37$  fm, 0.41 fm, 0.40 fm, respectively. For the correlation

length of the strange condensate we obtain  $\xi_{\zeta} = 0.20$  fm in all three cases. The correlation lengths are not very much smaller than, say, the radius of a proton. Thus, even if the freeze-out point for high-energy  $pp$  collisions happens to be close to that for Au + Au collisions at RHIC energies, the transition from the symmetry restored to the broken phase might be different. Finally, we also note that the correlation lengths obtained from our effective potential are not larger than the thermal correlation length  $1/T$  at freeze-out, and so corrections beyond the mean-field approximation employed here should be analyzed in the future.

## 5. Conclusion

Particle ratios as calculated in a chiral  $SU(3)$   $\sigma-\omega$  model are compared with RHIC data for Au + Au at  $\sqrt{130}$  A GeV and with noninteracting gas calculations. Since different versions of the chiral model show qualitatively different phase transition scenarios, we investigate whether the particle production, i.e., the chemistry of the system, is sensitive to the phase transition behaviour. Since we have shown that the current data are described by all three different phase transition scenarios and the ideal gas model, we can so far not favour or rule out any one scenario. In all interacting models the effective masses at freeze-out are shifted up to 15% from their vacuum values. The fitted chemical freeze-out temperatures and chemical potentials depend on the order of the phase transition. The crossover case yields 15 MeV shifted  $T$  values as compared to the noninteracting gas model while the models with a first order phase transition yield more than 30 MeV lower temperatures. Furthermore, the fitted freeze-out points are located practically right on the phase transition boundary, in the first order phase transition scenarios, but  $T$  is always  $\leq T_c$ . This suggests that at RHIC the system emerges after the chiral phase transition. This of course is only true if a first order phase transition does actually occur in QCD at small chemical potentials and high  $T$ . “Freezing” of the relative abundances of various hadrons in the symmetric phase (at  $T > T_c$ ) is excluded.

## Acknowledgements

The authors are grateful to P. Braun-Munzinger, A. Dumitru, L. Gerland, M. Gorenstein, I. Mishustin, and K. Paech for fruitful discussions. This work is supported by Deutsche Forschungsgemeinschaft (DFG), Gesellschaft für Schwerionenforschung (GSI), Bundesministerium für Bildung und Forschung (BMBF), the Graduiertenkolleg Theoretische und Experimentelle Schwerionenphysik and by the US Department of Energy, Nuclear Physics Division (Contract No. W-31-109-Eng-38).

## References

- [1] E. Fermi, *Prog. Theor. Phys.* 5 (1950) 570.
- [2] L.D. Landau, *Izv. Akad. Nauk SSSR Ser. Fiz.* 17 (1953) 51.
- [3] D. Hahn, H. Stöcker, *Nucl. Phys. A* 452 (1986) 723.
- [4] F. Becattini, J. Cleymans, A. Keranen, E. Suhonen, K. Redlich, *Phys. Rev. C* 64 (2001) 024901.
- [5] H. Stöcker, W. Greiner, W. Scheid, *Z. Phys. A* 286 (1978) 121.
- [6] P. Braun-Munzinger, D. Magestro, K. Redlich, J. Stachel, *Phys. Lett. B* 518 (2001) 41.
- [7] G.D. Westfall, et al., *Phys. Rev. Lett.* 37 (1976) 1202.
- [8] L.P. Csernai, J.I. Kapusta, *Phys. Rep.* 131 (1986) 223.
- [9] P. Braun-Munzinger, J. Stachel, J.P. Wessels, N. Xu, *Phys. Lett. B* 365 (1996) 1.
- [10] J. Rafelski, J. Letessier, G. Torrieri, *Phys. Rev. C* 64 (2001) 054907.
- [11] J. Letessier, J. Rafelski, *Int. J. Mod. Phys. E* 9 (2000) 107.
- [12] P. Braun-Munzinger, J. Stachel, *Nucl. Phys. A* 638 (1998) 3.
- [13] J. Cleymans, K. Redlich, *Phys. Rev. C* 60 (1999) 054908.
- [14] D. Zschesche, P. Papazoglou, S. Schramm, C. Beckmann, J. Schaffner-Bielich, H. Stöcker, W. Greiner, *Springer Tracts in Modern Physics*, Vol. 163, 2000, p. 129.
- [15] P. Papazoglou, S. Schramm, J. Schaffner-Bielich, H. Stöcker, W. Greiner, *Phys. Rev. C* 57 (1998) 2576.
- [16] P. Papazoglou, D. Zschesche, S. Schramm, J. Schaffner-Bielich, H. Stöcker, W. Greiner, *Phys. Rev. C* 59 (1999) 411.
- [17] J. Theis, G. Graebner, G. Buchwald, J.A. Maruhn, W. Greiner, H. Stöcker, J. Polonyi, *Phys. Rev. D* 28 (1983) 2286.
- [18] J. Schaffner, I.N. Mishustin, L.M. Satarov, H. Stöcker, W. Greiner, *Z. Phys. A* 341 (1991) 47.
- [19] G.E. Brown, M. Rho, *Phys. Rep.* 269 (1996) 333.
- [20] M. Michalec, W. Florkowski, W. Broniowski, *Phys. Lett. B* 520 (2001) 213.
- [21] D. Zschesche, S. Schramm, H. Stöcker, W. Greiner, *Phys. Rev. C* 65 (2002) 064902.
- [22] F. Karsch, E. Laermann, A. Peikert, *Nucl. Phys. B* 605 (2001) 579.
- [23] F. Karsch, hep-lat/9903031.
- [24] B.D. Serot, J.D. Walecka, *Int. J. Mod. Phys. E* 6 (1997) 515.
- [25] J. Schechter, *Phys. Rev. D* 21 (1980) 3393.
- [26] D. Zschesche, et al., *Nucl. Phys. A* 681 (2001) 34.
- [27] S.A. Bass, et al., *Prog. Part. Nucl. Phys.* 41 (1998) 225.
- [28] UrQMD Collaboration, <http://www.th.physik.uni-frankfurt.de/~urqmd/>.
- [29] M. Michalec, Ph.D. Thesis, Institute of Nuclear Physics, Cracow, 2001.
- [30] W. Florkowski, W. Broniowski, M. Michalec, *Acta Phys. Pol. B* 33 (2002) 761.
- [31] N. Xu, M. Kaneta, *Nucl. Phys. A* 698 (2002) 306.
- [32] D. Zschesche, et al., unpublished.
- [33] J. Cleymans, K. Redlich, *Phys. Rev. Lett.* 81 (1998) 5284.
- [34] P.R. Subramanian, H. Stöcker, W. Greiner, *Phys. Lett. B* 173 (1986) 468.
- [35] S.A. Bass, P. Danielewicz, S. Pratt, A. Dumitru, *J. Phys. G* 27 (2001) 635.
- [36] S.A. Bass, A. Dumitru, *Phys. Rev. C* 61 (2000) 064909.
- [37] R. Rapp, E.V. Shuryak, *Phys. Rev. Lett.* 86 (2001) 2980.
- [38] C. Greiner, S. Leupold, *J. Phys. G* 27 (2001) L95.
- [39] C. Greiner, *J. Phys. G* 28 (2002) 1631.
- [40] C. Greiner, *Nucl. Phys. A* 698 (2002) 591.
- [41] O. Scavenius, A. Dumitru, J.T. Lenaghan, hep-ph/0201079.
- [42] F. Becattini, U.W. Heinz, *Z. Phys. C* 76 (1997) 269.
- [43] F. Becattini, M. Gazdzicki, J. Sollfrank, *Nucl. Phys. A* 638 (1998) 403.
- [44] R. Stock, *Nucl. Phys. A* 661 (1999) 282.
- [45] R. Stock, *Phys. Lett. B* 456 (1999) 277.