

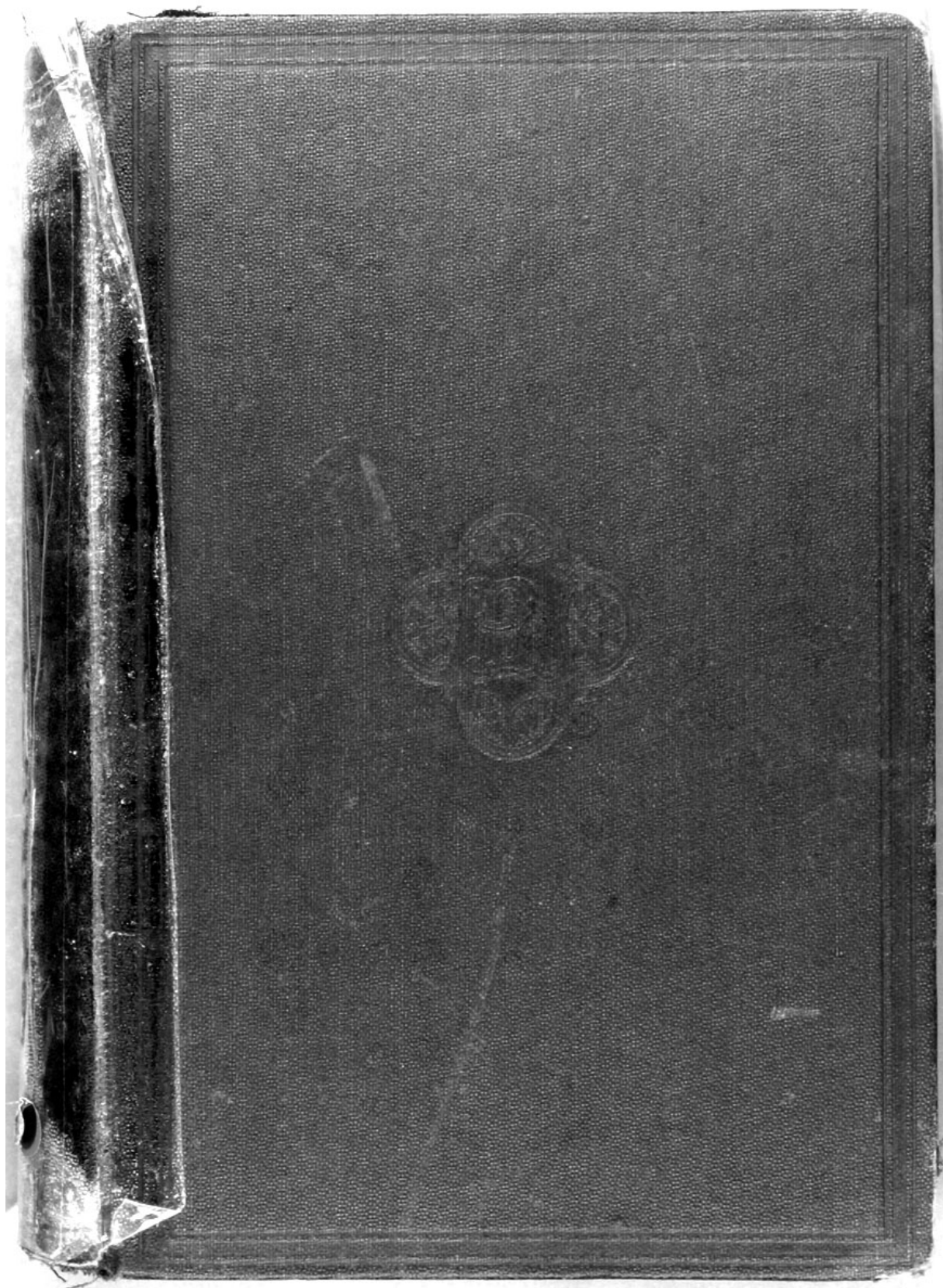
- Beispielhafter Auszug aus der digitalisierten Fassung im Format PDF -

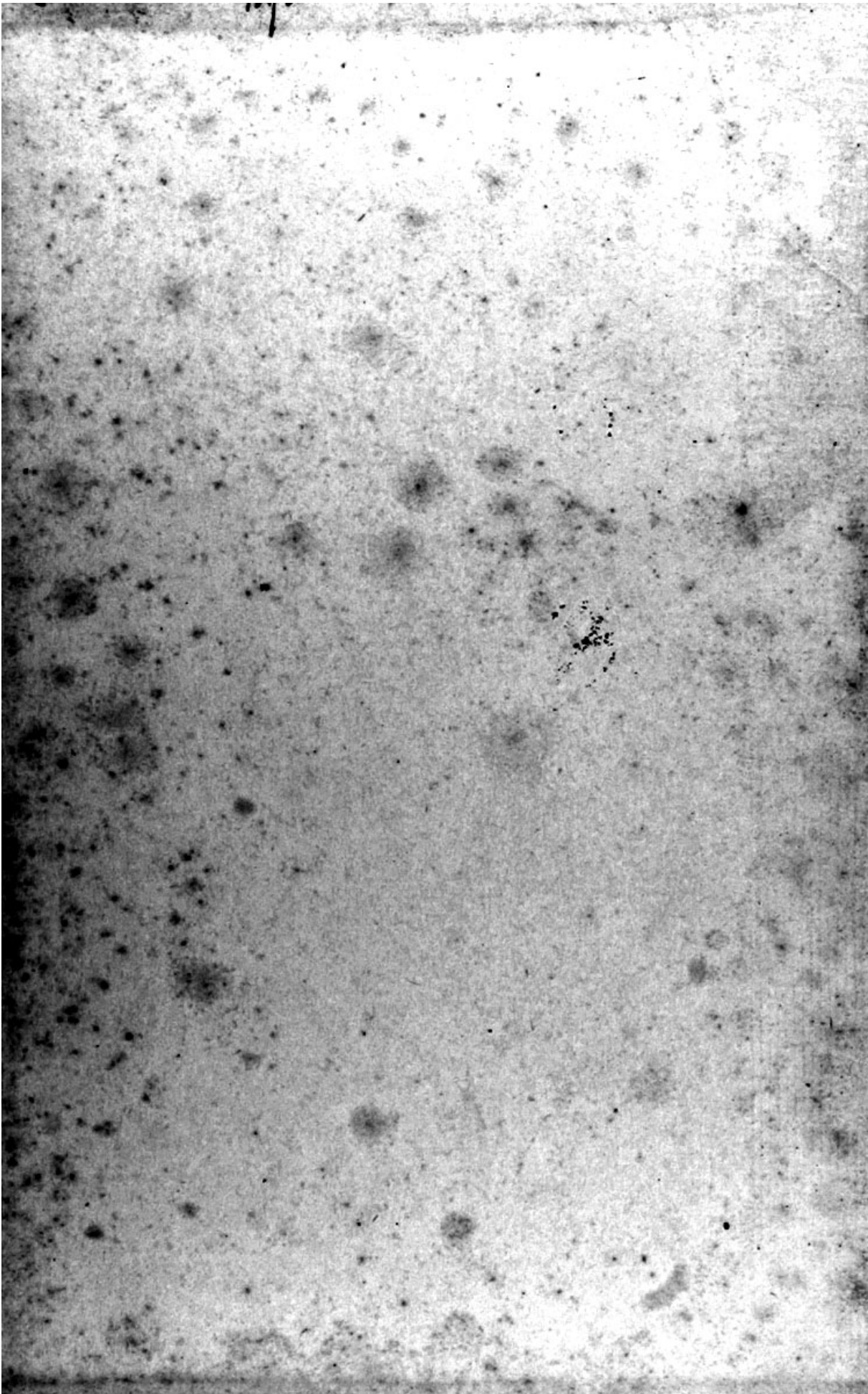
Illustrations of the British Flora

Walter Hood Fitch

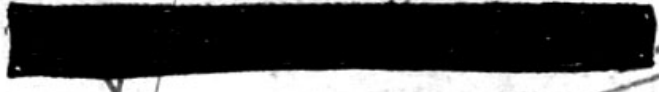
Die Digitalisierung dieses Werkes erfolgte im Rahmen des Projektes BioLib (www.BioLib.de).

Die Bilddateien wurden im Rahmen des Projektes Virtuelle Fachbibliothek Biologie ([ViFaBio](#)) durch die [Universitätsbibliothek Johann Christian Senckenberg \(Frankfurt am Main\)](#) in das Format PDF überführt, archiviert und zugänglich gemacht.

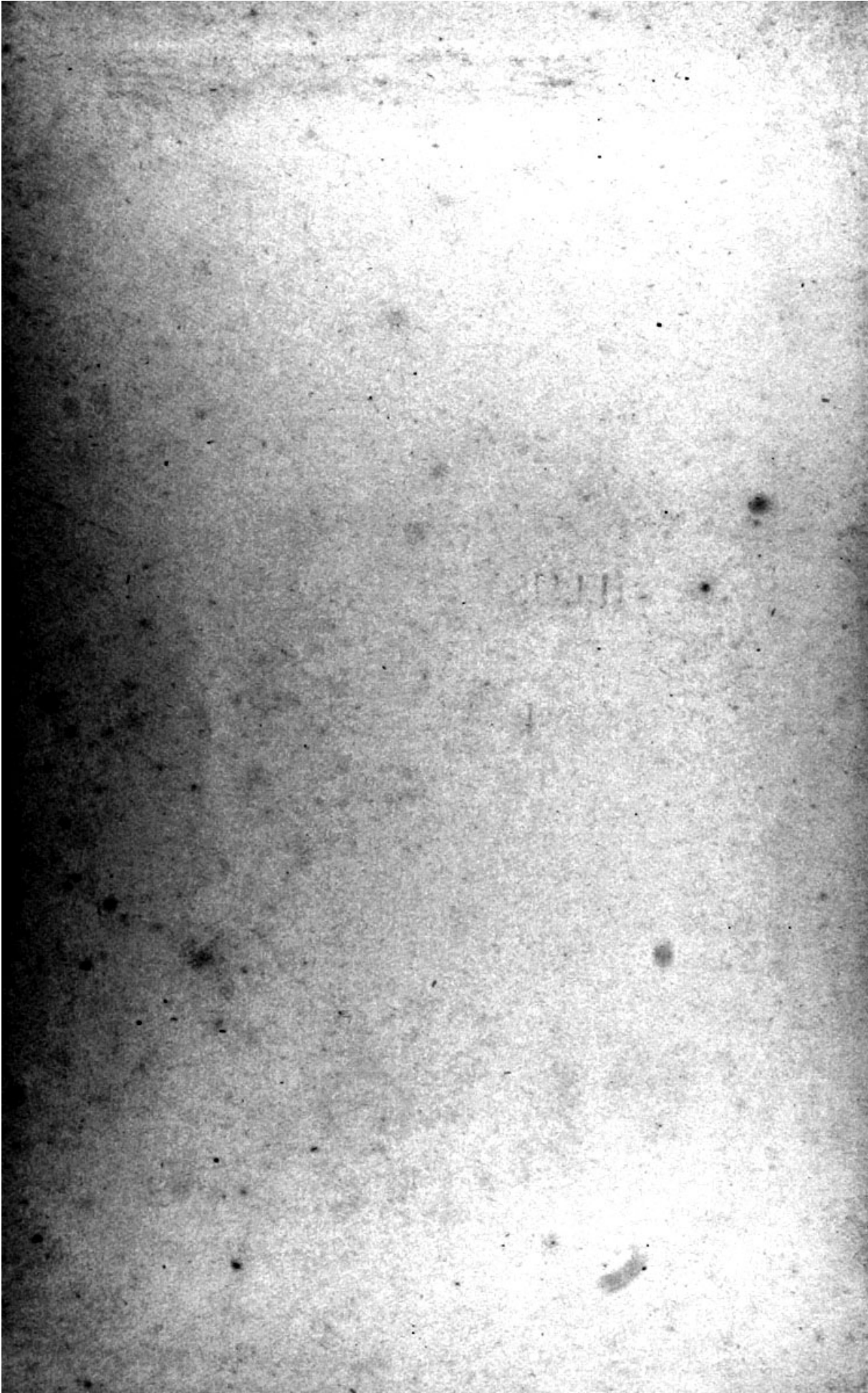




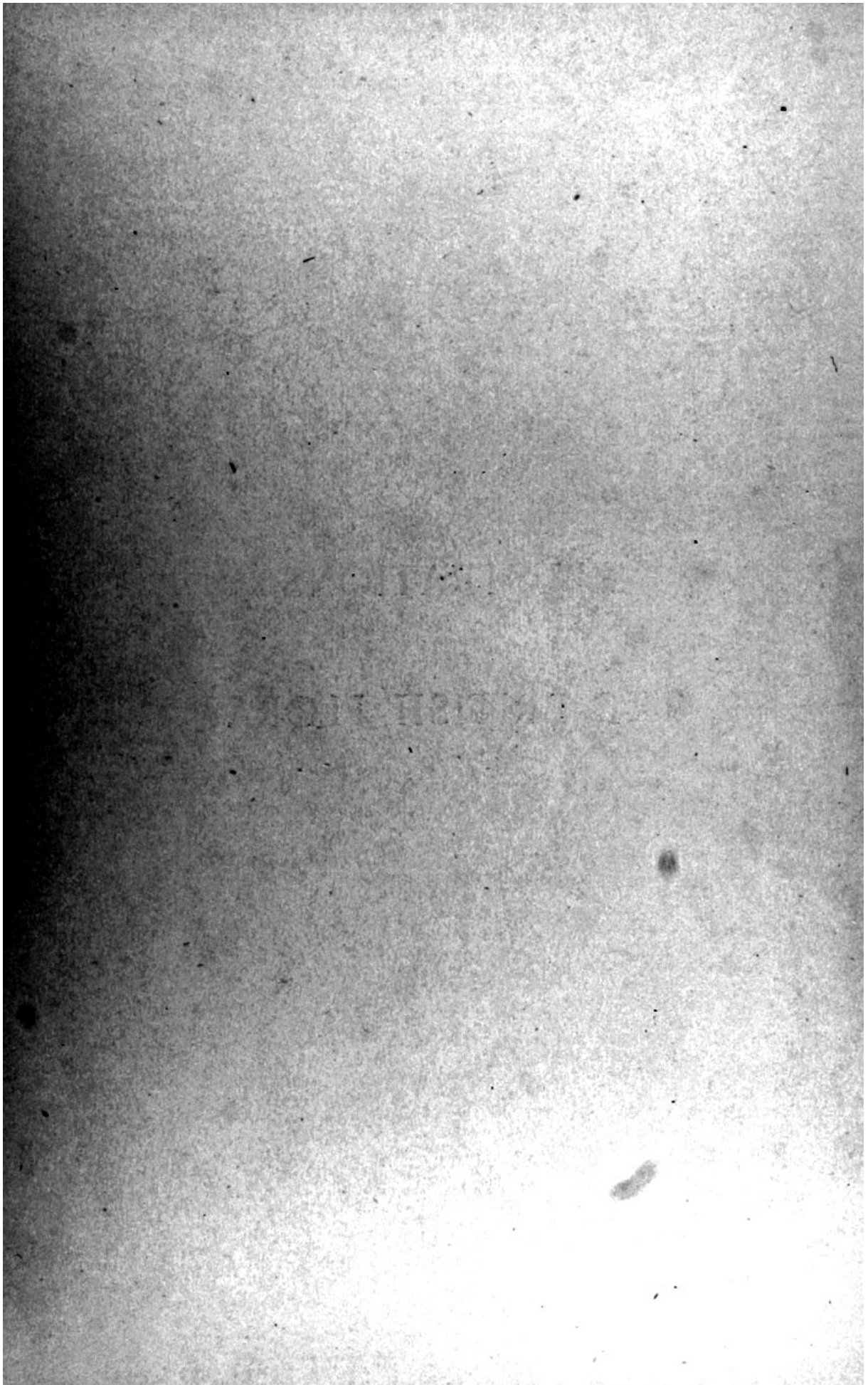
#199
m



Andrews



ILLUSTRATIONS
OF
THE BRITISH FLORA



ILLUSTRATIONS
OF
THE BRITISH FLORA

A SERIES OF
WOOD ENGRAVINGS, WITH DISSECTIONS,
OF
British Plants

alter wood DRAWN BY *1817-1892*
W. H. FITCH, F.L.S.,

WITH ADDITIONS BY
W. G. SMITH, F.L.S.,
AND OTHERS.

*FORMING AN ILLUSTRATED COMPANION TO BENTHAM'S HANDBOOK
OF THE BRITISH FLORA AND OTHER FLORAS.*

FIFTH REVISED EDITION.



LONDON:
L. REEVE & CO., LTD.
6, HENRIETTA STREET, COVENT GARDEN, W.C. 2.

1924

By GEORGE BENTHAM, F.R.S., and
Sir J. D. HOOKER, C.B., G.C.S.I., F.R.S.

HANDBOOK OF THE BRITISH FLORA; a description of the Flowering Plants and Ferns indigenous to, or naturalized in, the British Isles. With an introduction on the Outlines of Botany in special reference to local Floras, and an analytical Key to the Families and anomalous Genera for students and beginners. Seventh revised edition, edited by A. B. Rendle, M.A., D.Sc., F.R.S. pp. lxi + 606. Price 12s.

By F. TOWNSEND, M.A., F.L.S.

FLORA OF HAMPSHIRE, including the Isle of Wight, with localities of the less common species. Second edition, greatly enlarged; with coloured map and 2 plates. pp. xxxviii + 658. Price 18s.

PREFACE.

THE illustrations contained in this volume were drawn, with the few exceptions presently referred to, by W. H. Fitch, F.L.S., for the original illustrated edition of Bentham's "Handbook of the British Flora." Since that edition was exhausted they have been issued separately, forming a companion volume to the "Handbook" and to other general, county and local Floras. Additional drawings by W. G. Smith, F.L.S., and others, have been incorporated from time to time illustrating additions to the Flora.

The arrangement in the present edition follows that of the latest edition of Bentham's "Handbook."

The "Arrangement of Families," with some of their distinguishing characters, is reproduced from the "Handbook," and this is preceded by descriptions of the main divisions of classification. Those who have not made a previous study of systematic botany may obtain from these a general conception of the main principles upon which the arrangement of the Families is based. But until a knowledge of the subject is acquired by practical observation, the "Analytical Key to the Families and anomalous genera," also reproduced from the "Handbook," will be of more service in identifying the Families to which plants are assigned, for the reason that this "Analytical Key" is constructed from the more easily observed characters, which are not necessarily those which determine the systematic arrangement.

In the body of the work the scientific names of the plants as adopted in the latest edition of the "Handbook" are given first in larger type. To these are added in small type the names used in the previous edition of the "Handbook" in cases where alteration has been necessary.

The English names are also added to each illustration, and are followed by an indication of the colour of the flower except where it is always white, cream, or only tinged with colour, or green and inconspicuous.

B.	signifies	Blue.	Pk.	signifies	Pink.
Br.	„	Brown.	R.	„	Red, Orange, Scarlet or Crimson.
G.	„	Green.	W.	„	White.
Li.	„	Lilac.	Y.	„	Yellow.
P.	„	Purple.			

Although the illustrations are necessarily small and not intended to be coloured, many persons have found it of interest to do so, perhaps as a record of their observation and identification of the plants themselves; a paper suitable for colouring has therefore been used.

July, 1924.

... und die nächsten 10 Seiten ...
... and the next 10 pages ...



643. *Pyrola uniflora* L.

One-flowered Wintergreen.



644. *Pyrola rotundifolia* L.
Larger Wintergreen.



645. *Pyrola media* Sw.

Intermediate Wintergreen.



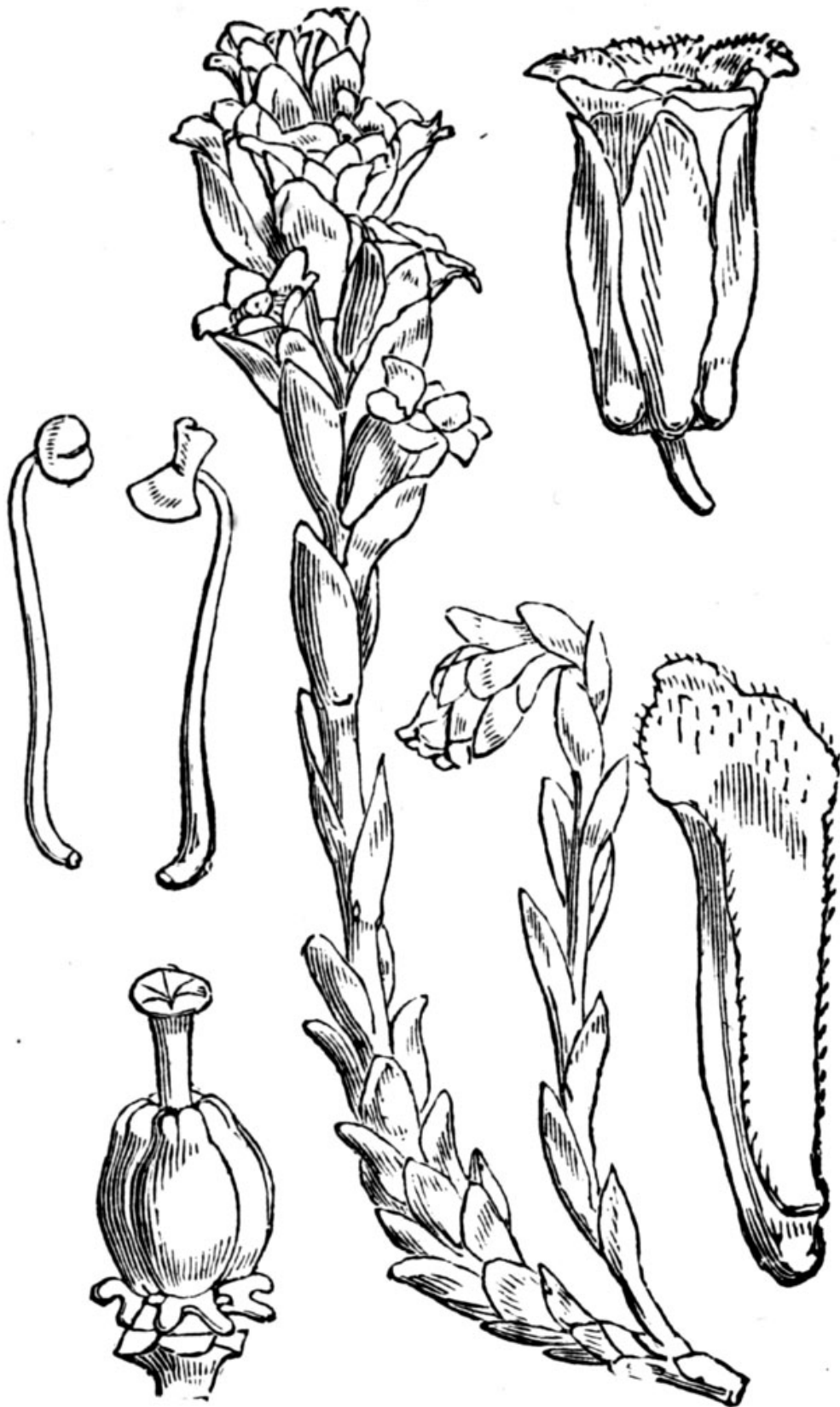
646. *Pyrola minor* L.

Common Wintergreen.

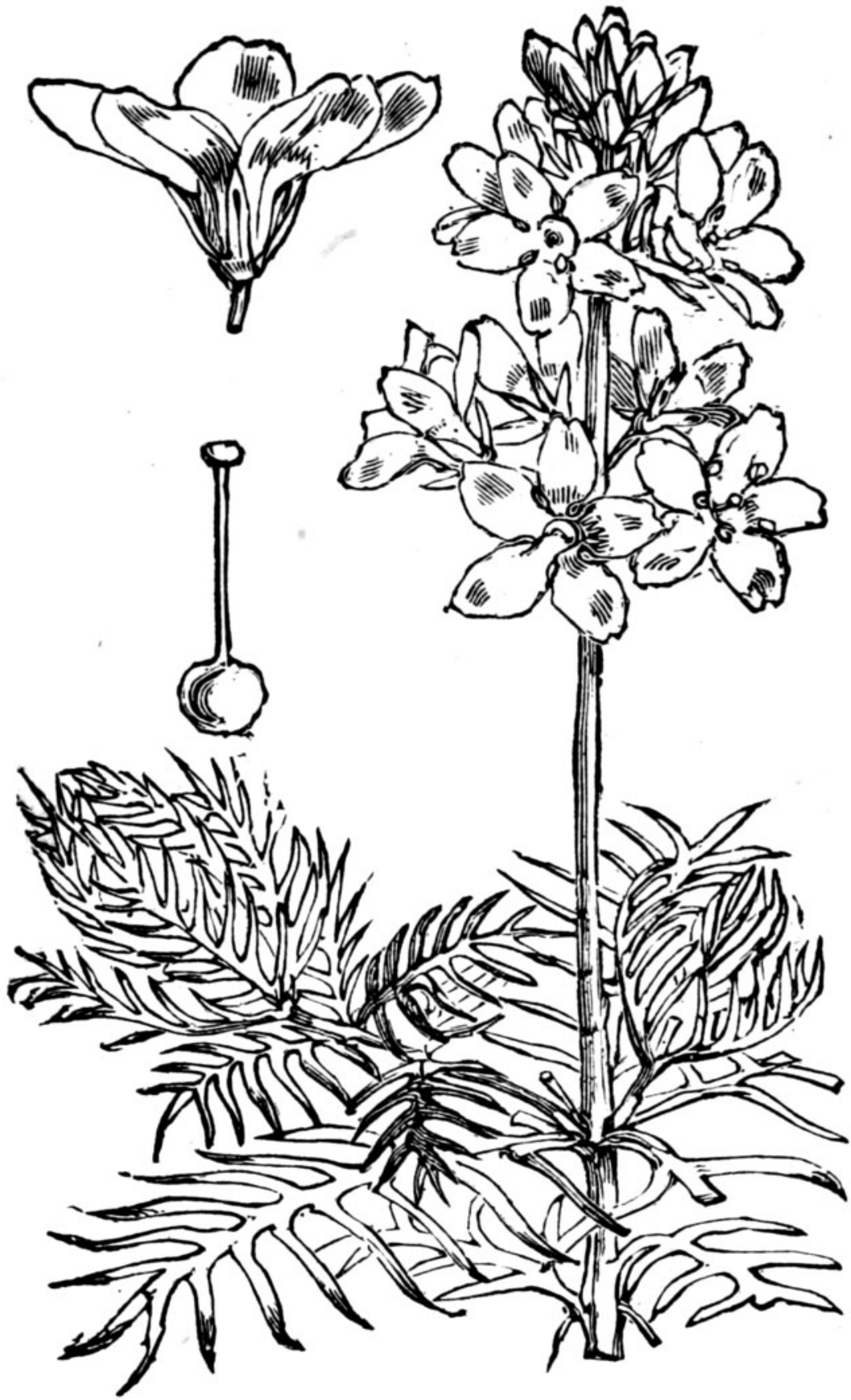


647. *Pyrola secunda* L.

Serrated Wintergreen.

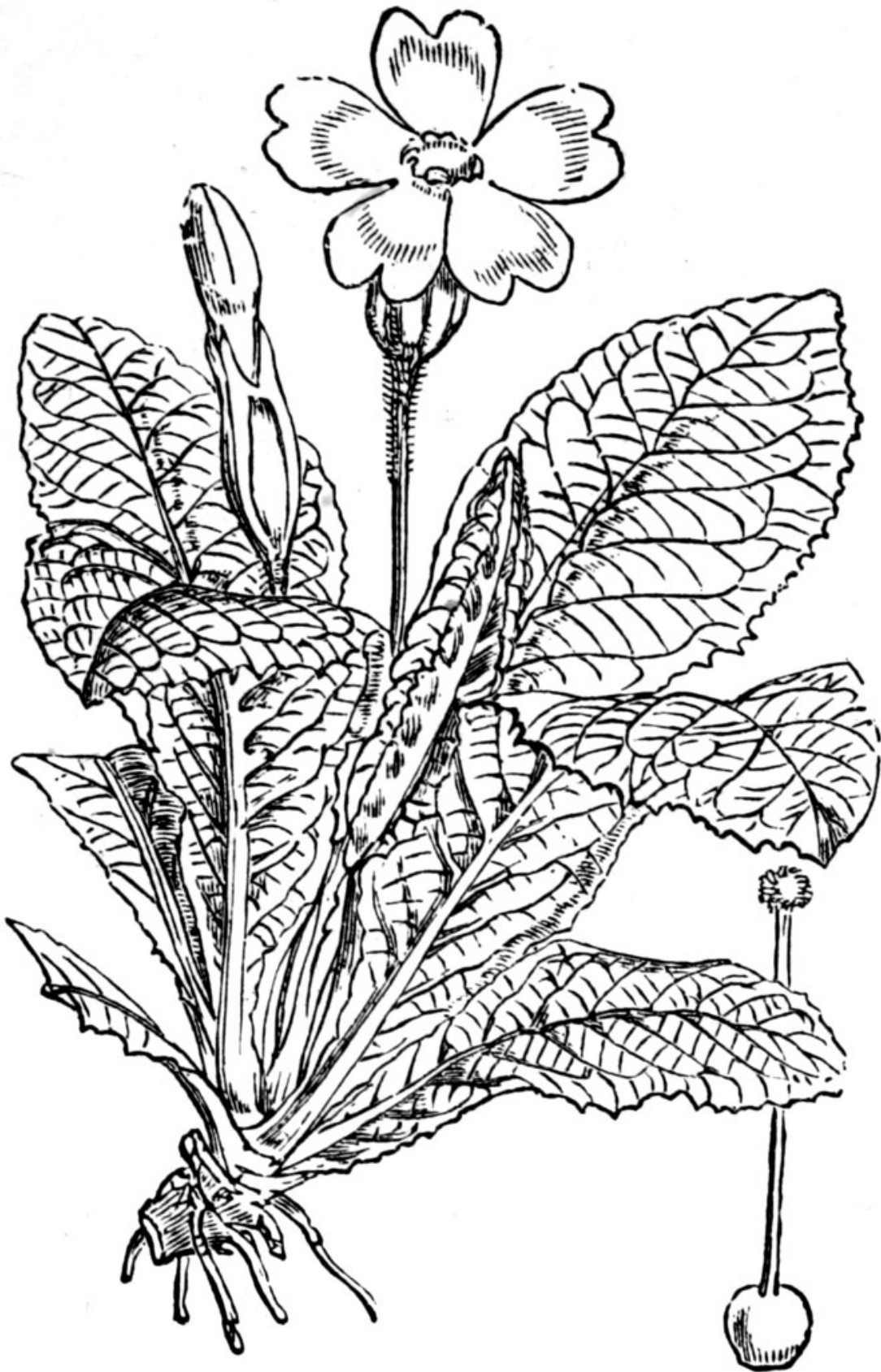


648. *Monotropa Hypopithys* L.
Yellow Bird's-nest.



649. *Hottonia palustris* L.

Water Violet, Featherfoil ; P.



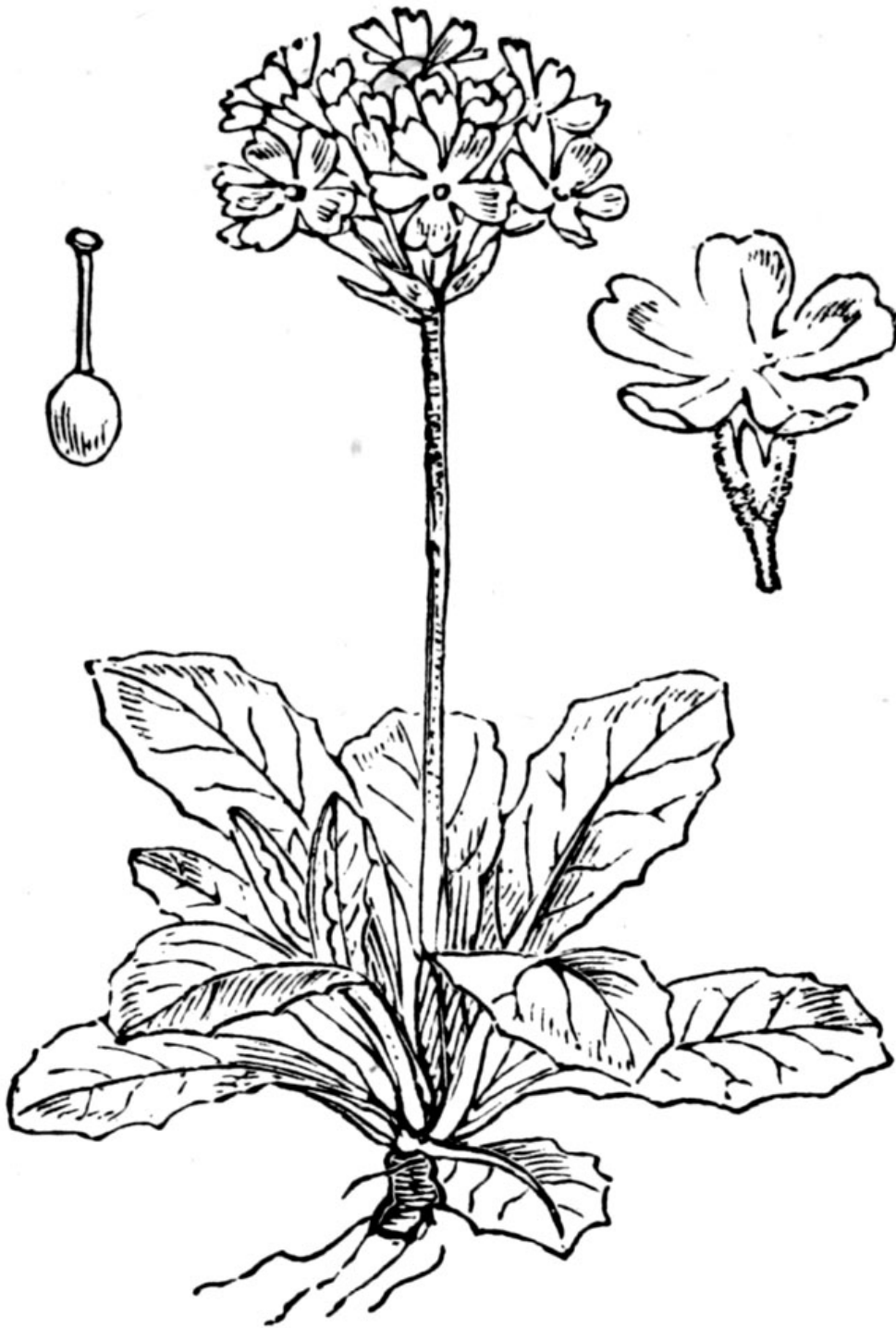
650. *Primula vulgaris* Huds.

Primrose; *Y.*



651. *Primula veris* L.

Cowslip; *Y.*



652. *Primula farinosa* L.

Bird's-eye Primrose; Li.