

Universitätsbibliothek
Johann Christian Senckenberg
Frankfurt/Main
Handschriftenabteilung

Nachlass Ludwig Börne

Briefe von Ludwig Börne an Jeanette Wohl

Nachl.L.Börne BVIII, Nr. 545, Bl. 801-802

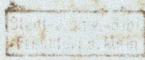
„Billets“ von Ludwig Börne an Jeanette Wohl

Nachl.L.Börne BXI, Nr. _____, Bl. _____

Briefe von Jeanette Wohl an Ludwig Börne

Nachl.L.Börne BIX, Nr. _____, Bl. _____

The first part of the paper is devoted to a general
 consideration of the subject. It is shown that the
 theory of the subject is not yet complete, and
 that there are many points which require further
 investigation. The author then proceeds to a
 detailed examination of the various aspects of the
 subject, and shows how they are connected with
 each other. He then discusses the various methods
 which have been employed for the purpose of
 determining the nature of the subject, and shows
 how they are connected with each other. He then
 discusses the various results which have been
 obtained, and shows how they are connected with
 each other. He then discusses the various
 questions which remain to be solved, and shows
 how they are connected with each other. He then
 discusses the various methods which have been
 employed for the purpose of determining the
 nature of the subject, and shows how they are
 connected with each other. He then discusses the
 various results which have been obtained, and
 shows how they are connected with each other.
 He then discusses the various questions which
 remain to be solved, and shows how they are
 connected with each other. He then discusses the
 various methods which have been employed for
 the purpose of determining the nature of the
 subject, and shows how they are connected with
 each other. He then discusses the various results
 which have been obtained, and shows how they
 are connected with each other. He then
 discusses the various questions which remain to
 be solved, and shows how they are connected
 with each other. He then discusses the various
 methods which have been employed for the
 purpose of determining the nature of the
 subject, and shows how they are connected with
 each other. He then discusses the various results
 which have been obtained, and shows how they
 are connected with each other. He then
 discusses the various questions which remain to
 be solved, and shows how they are connected
 with each other.





CHICAGO ILL

5

1 2 3 4 5 6 7 8 9 10 11 12 13 14 15 16 17 18 19 20 21 22 23 24 25 26 27 28 29 30 31 32 33 34 35 36 37 38 39 40 41 42 43 44 45 46 47 48 49 50



FRANKFURT
13.
APR.
1832

Herrn

Ulrich Schmitt an der
neu am alten Siegel
für med. Werk

CARL SMITH
12 APR. 1832

Frankfurt a. M.

174
+ 11
+ 84



Empf, d
in die
Lithograph
einige
manie
Sobaten
Wird ig
wahr, u
und was
je fain
mit der
in f
je gar
für.
in
p; g
Nebst
mit der
in die
die f
die f
ning
und
es mag
O mag
beint.
In fl
sich
in die
es
H
So qu
hat in
es
es wie
G
G
G
G
G