

Figure S1

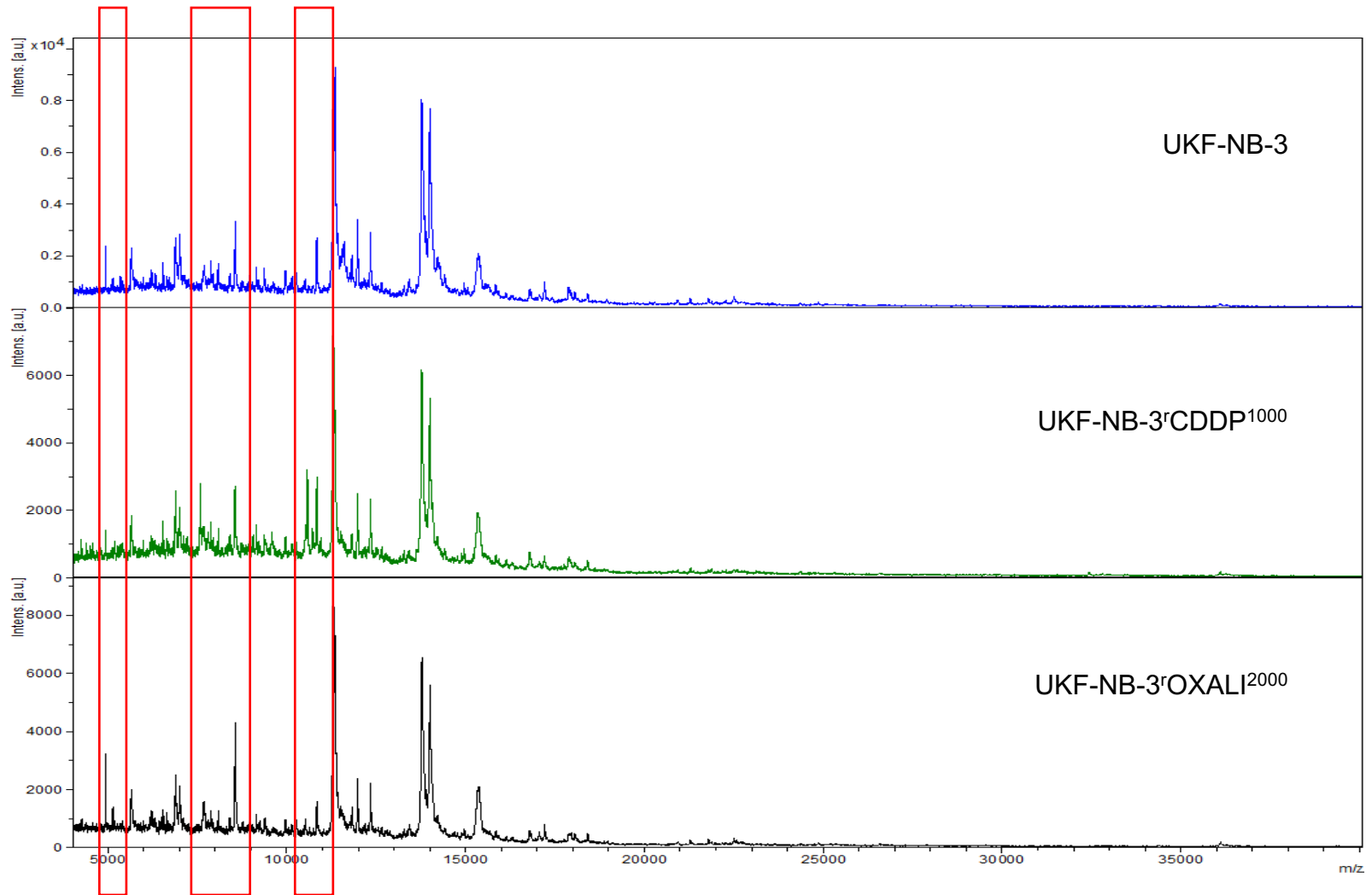


Figure S1. Representative intact cell MALDI-ToF mass spectrometry analysis spectra of the cell line UKF-NB-3 and its drug-adapted sublines. Some characteristic differences are highlighted in the red boxes.

Figure S2

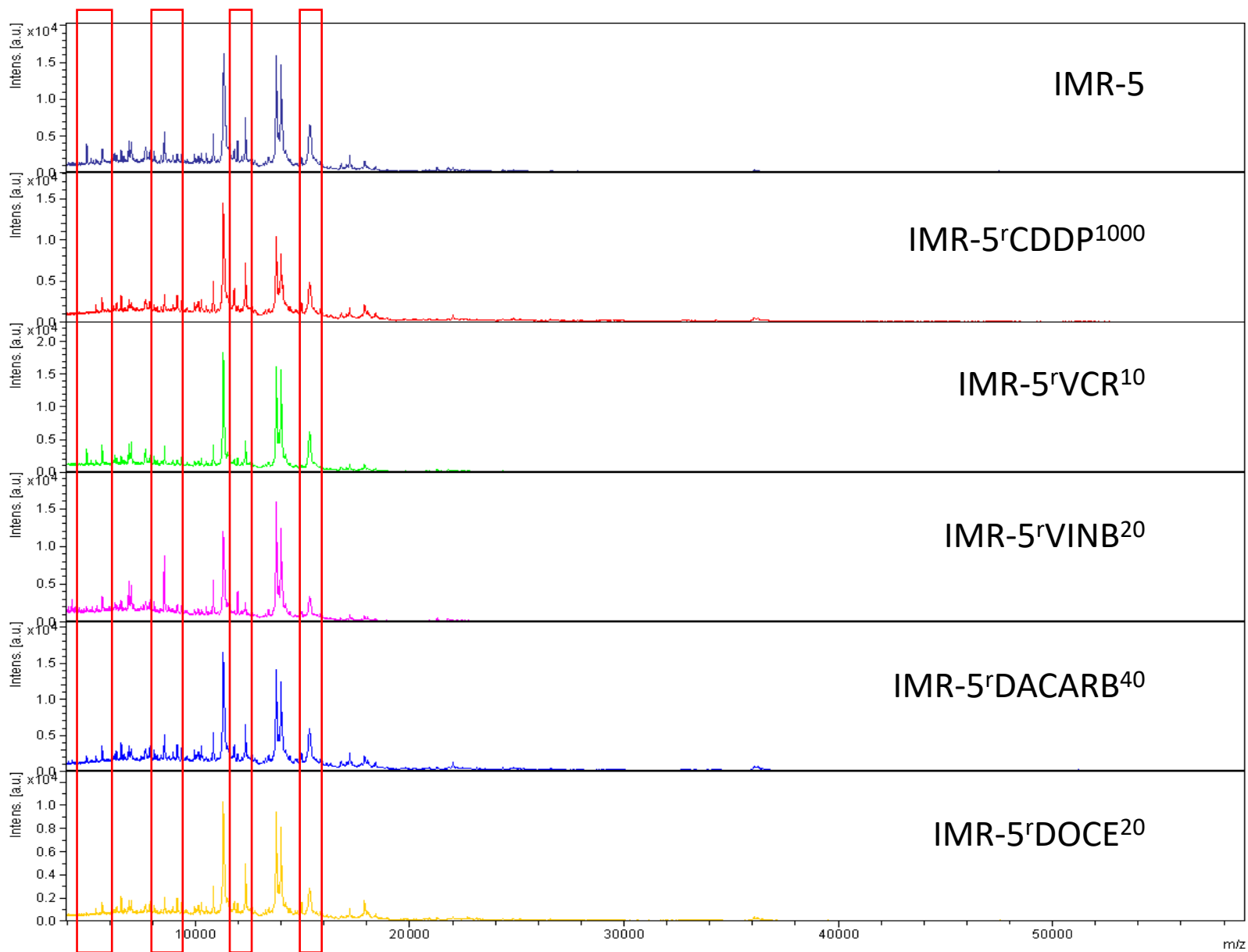


Figure S2. Representative intact cell MALDI-ToF mass spectrometry analysis spectra of the cell line IMR-5 and its drug-adapted sublines. Some characteristic differences are highlighted in the red boxes.

Figure S3

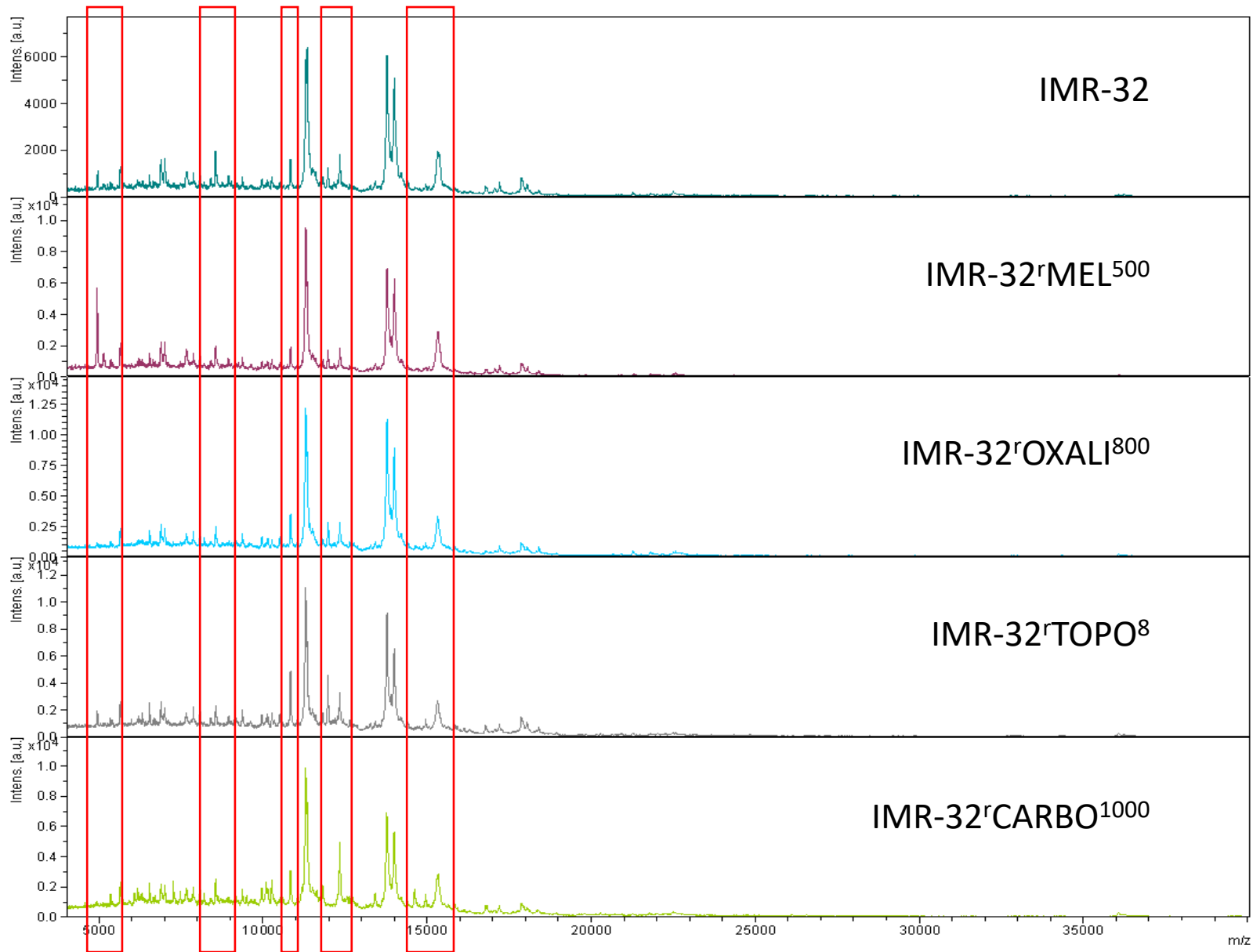


Figure S3. Representative intact cell MALDI-ToF mass spectrometry analysis spectra of the cell line IMR-32 and its drug-adapted sublines. Some characteristic differences are highlighted in the red boxes.

Figure S4

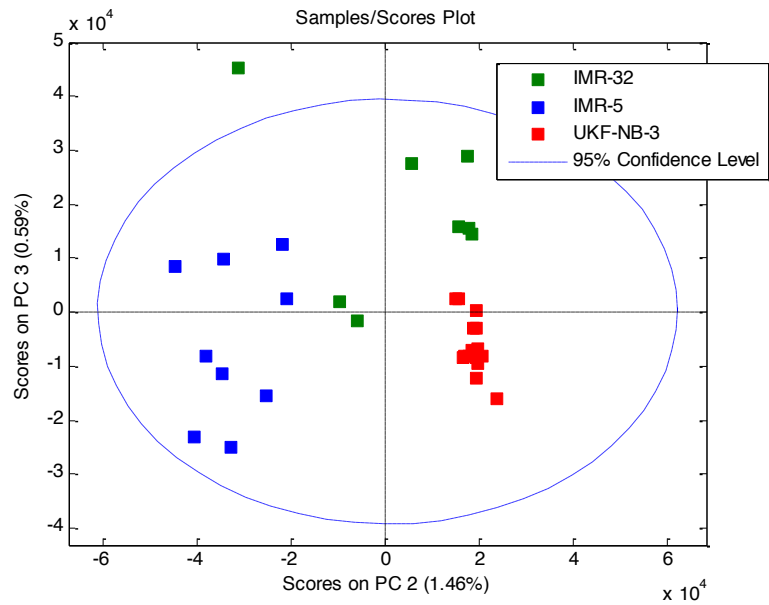
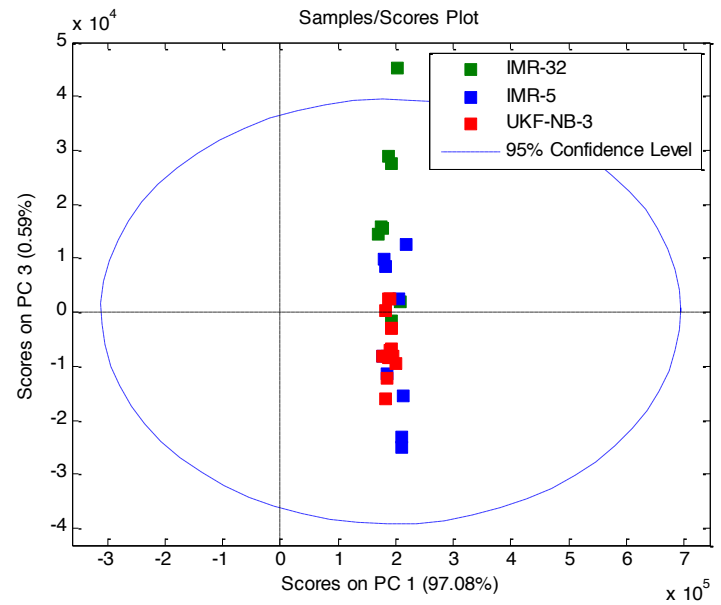
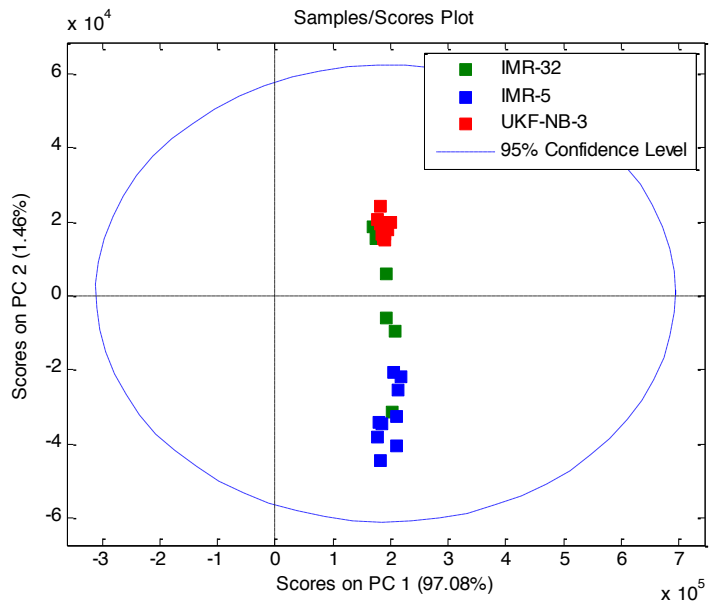


Figure S4. Comparison of intact cell MALDI-ToF mass spectrometry analysis data derived from the cell lines IMR-32, IMR-5, and UKF-NB-3 by principal component (PC) analysis. The comparisons PC1 vs. PC2, PC1 vs. PC3, and PC2 vs. PC3 are presented.

Figure S5

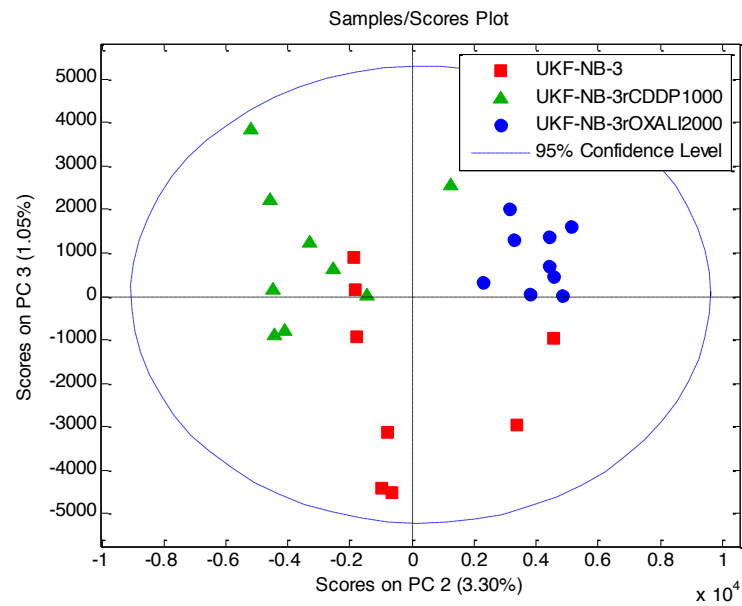
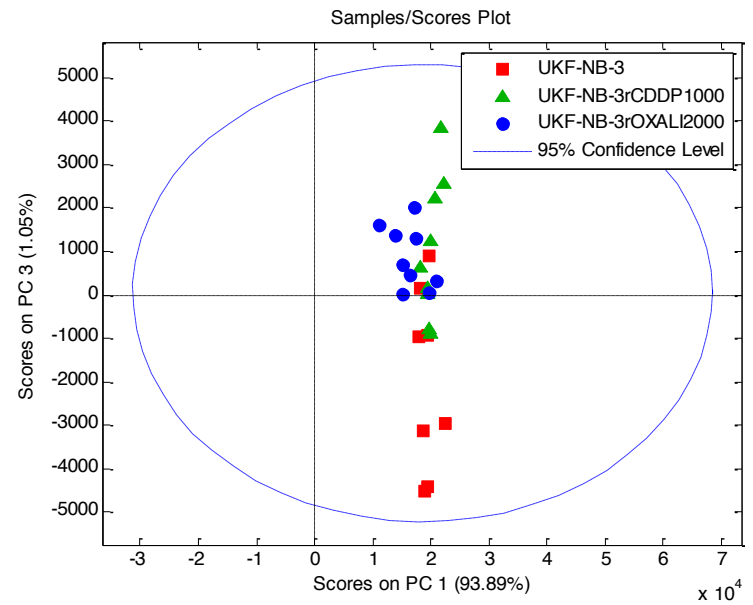
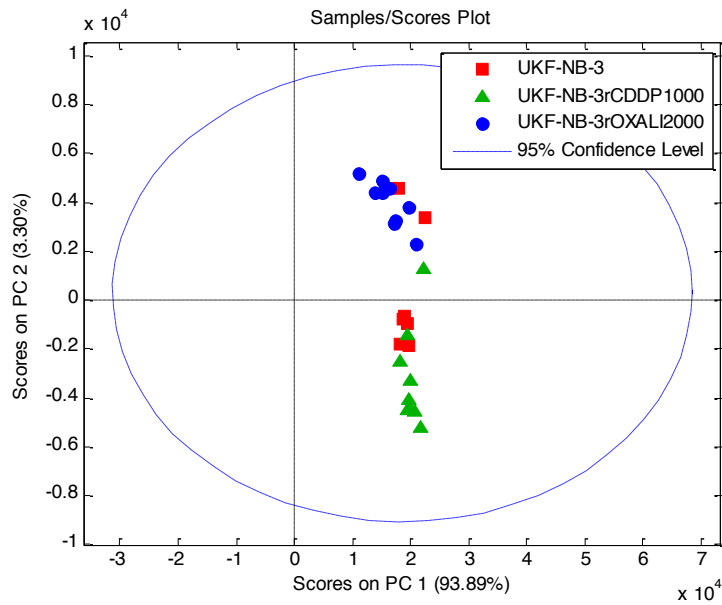


Figure S5. Comparison of intact cell MALDI-ToF mass spectrometry analysis data derived from the cell line UKF-NB-3 and its drug-adapted sublines by principal component (PC) analysis. The comparisons PC1 vs. PC2, PC1 vs. PC3, and PC2 vs. PC3 are presented.

Figure S6

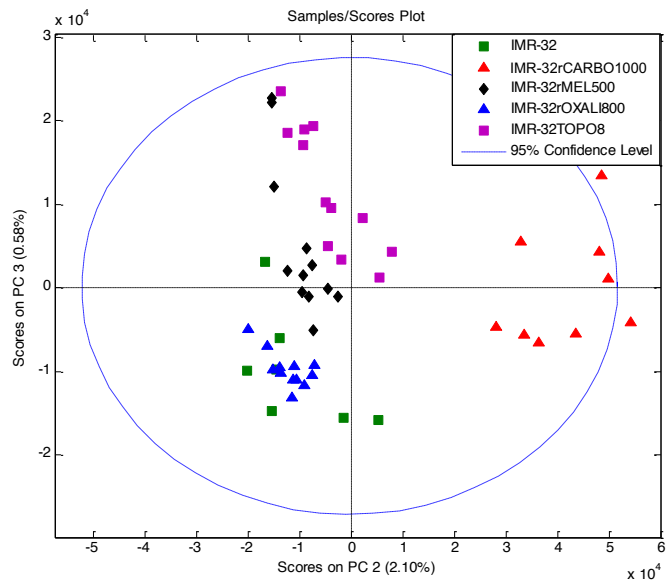
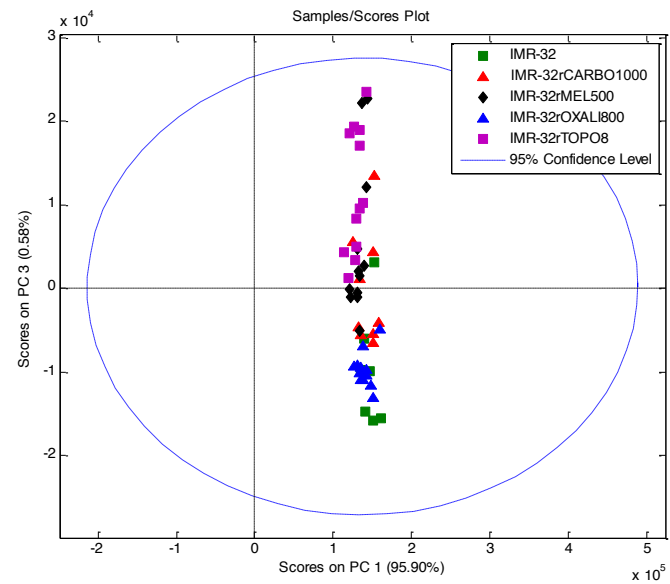
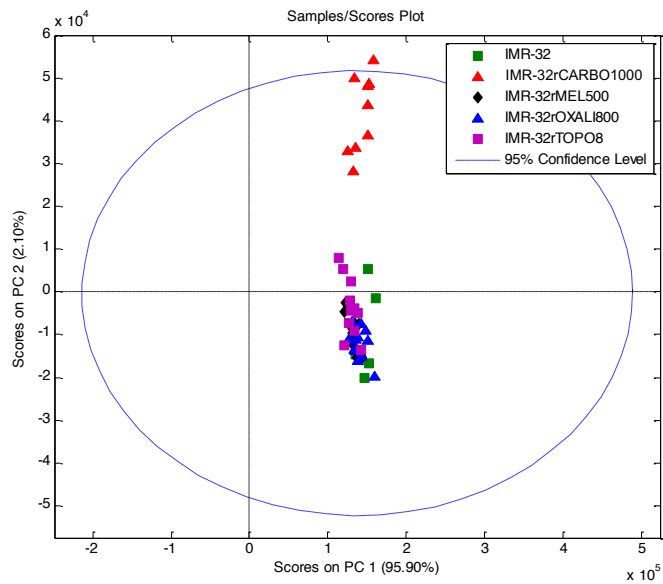


Figure S6. Comparison of intact cell MALDI-ToF mass spectrometry analysis data derived from the cell line IMR-32 and its drug-adapted sublines by principal component (PC) analysis. The comparisons PC1 vs. PC2, PC1 vs. PC3, and PC2 vs. PC3 are presented.

Figure S7

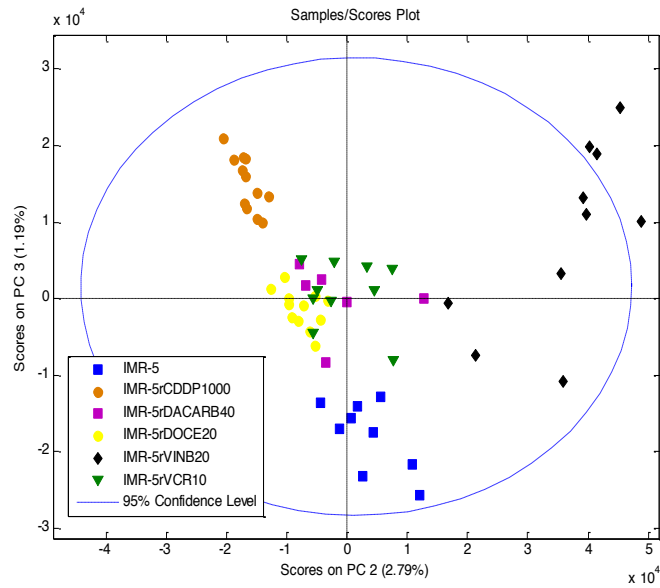
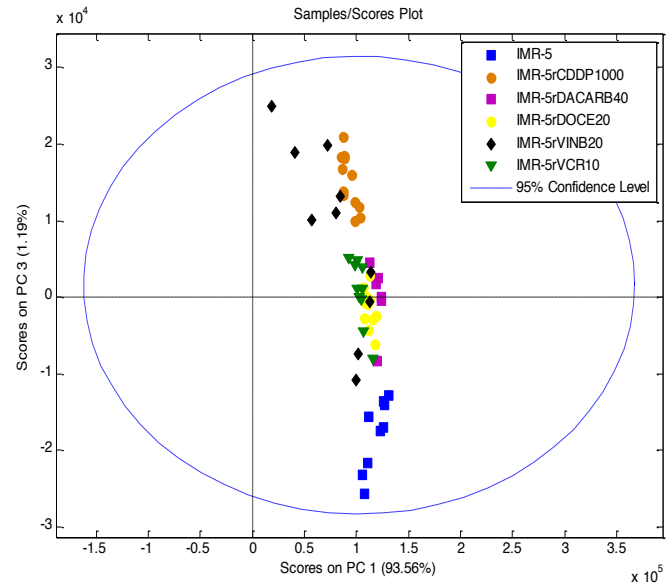
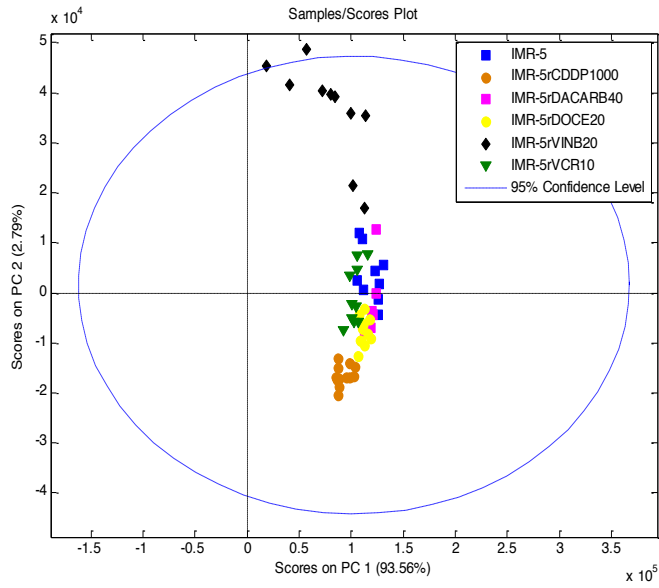


Figure S7. Comparison of intact cell MALDI-ToF mass spectrometry analysis data derived from the cell line IMR-5 and its drug-adapted sublines by principal component (PC) analysis. The comparisons PC1 vs. PC2, PC1 vs. PC3, and PC2 vs. PC3 are presented.

