

[*b*]-Annulated Halogen-Substituted Indoles as Potential DYRK1A Inhibitors

Supplementary Material

Christian Lechner, Maren Flaßhoff, Hannes Falke, Lutz Preu, Nadège Loaëc, Laurent Meijer, Stefan Knapp, Apirat Chaikuad, and Conrad Kunick

Spectra and chromatograms of 4-chlorocyclohepta[*b*]indol-10(5*H*)-one (11)

Table of contents:

Figure S1: ¹ H-NMR of 4-chlorocyclohepta[<i>b</i>]indol-10(5 <i>H</i>)-one (11)	2
Figure S2: ¹³ C-NMR of 4-chlorocyclohepta[<i>b</i>]indol-10(5 <i>H</i>)-one (11)	3
Figure S3: IR of 4-chlorocyclohepta[<i>b</i>]indol-10(5 <i>H</i>)-one (11)	4
Figure S4: MS (APCI+) of 4-chlorocyclohepta[<i>b</i>]indol-10(5 <i>H</i>)-one (11)	5
Figure S5: MS (APCI-) of 4-chlorocyclohepta[<i>b</i>]indol-10(5 <i>H</i>)-one (11)	6
Figure S6: HRMS/EIMS of 4-chlorocyclohepta[<i>b</i>]indol-10(5 <i>H</i>)-one (11)	7
Figure S7: HPLC gradient of 4-chlorocyclohepta[<i>b</i>]indol-10(5 <i>H</i>)-one (11)	8
Figure S8: HPLC isocratic of 4-chlorocyclohepta[<i>b</i>]indol-10(5 <i>H</i>)-one (11)	9

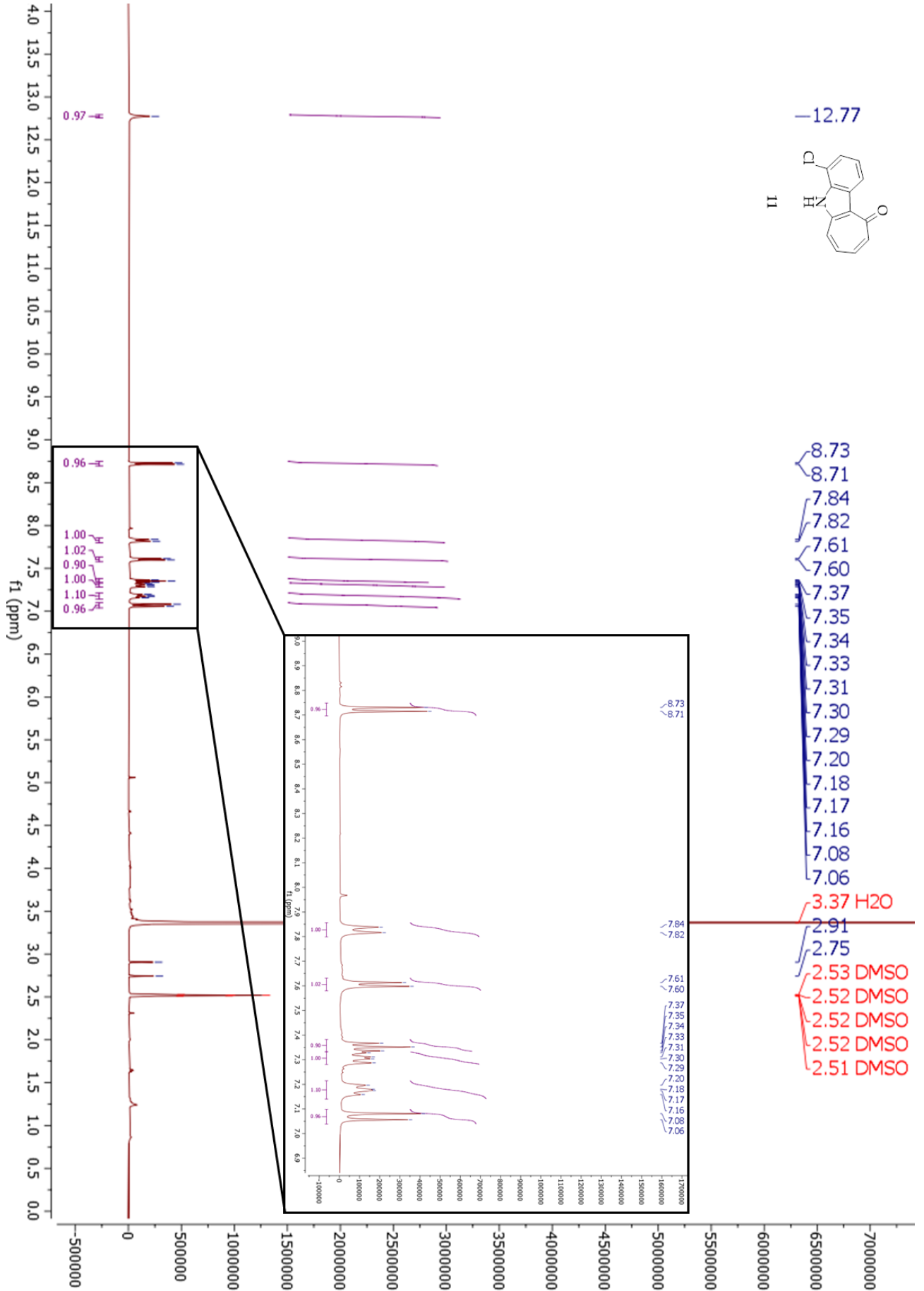
Figure S1: ^1H -NMR spectrum of 11

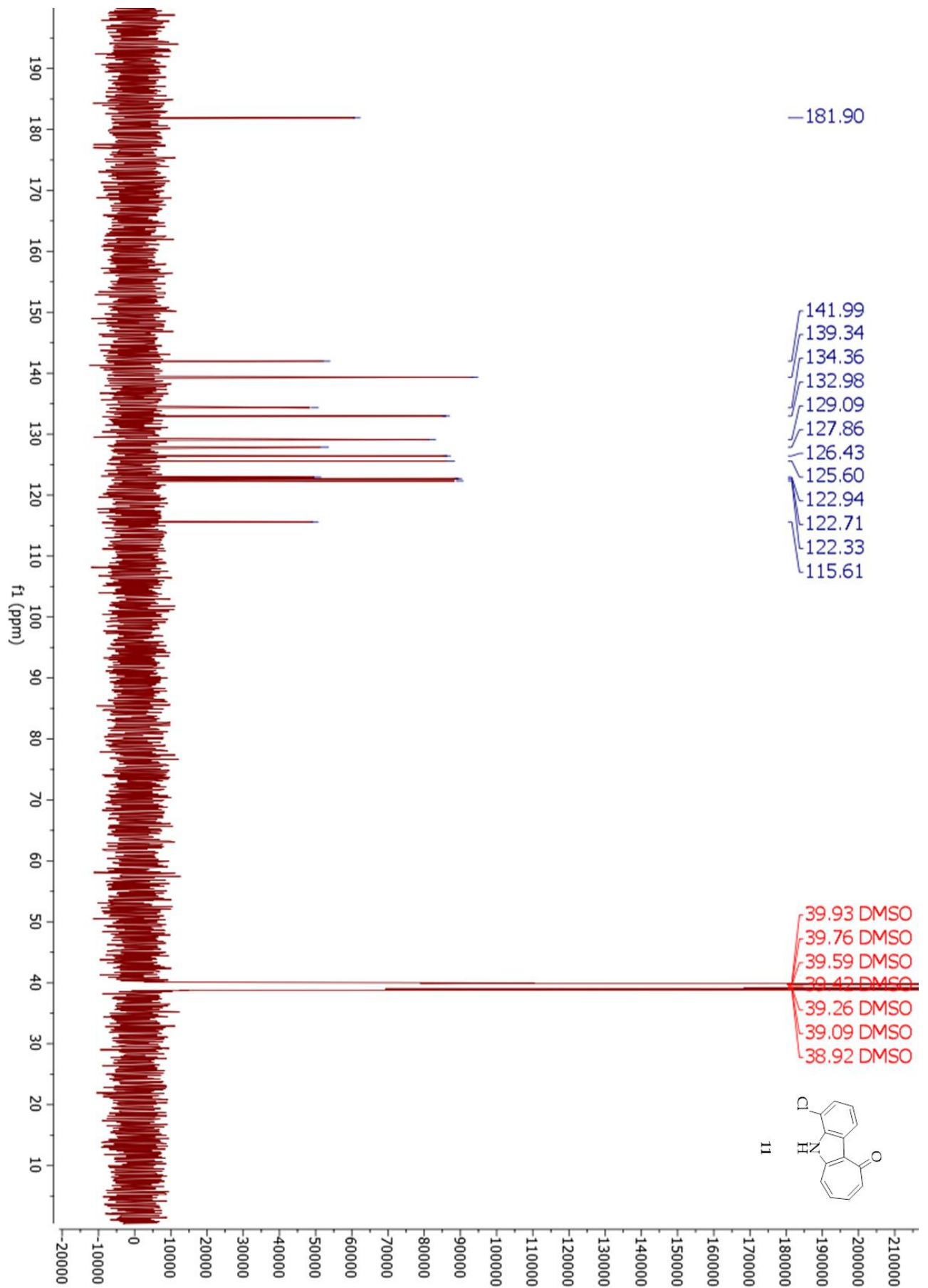
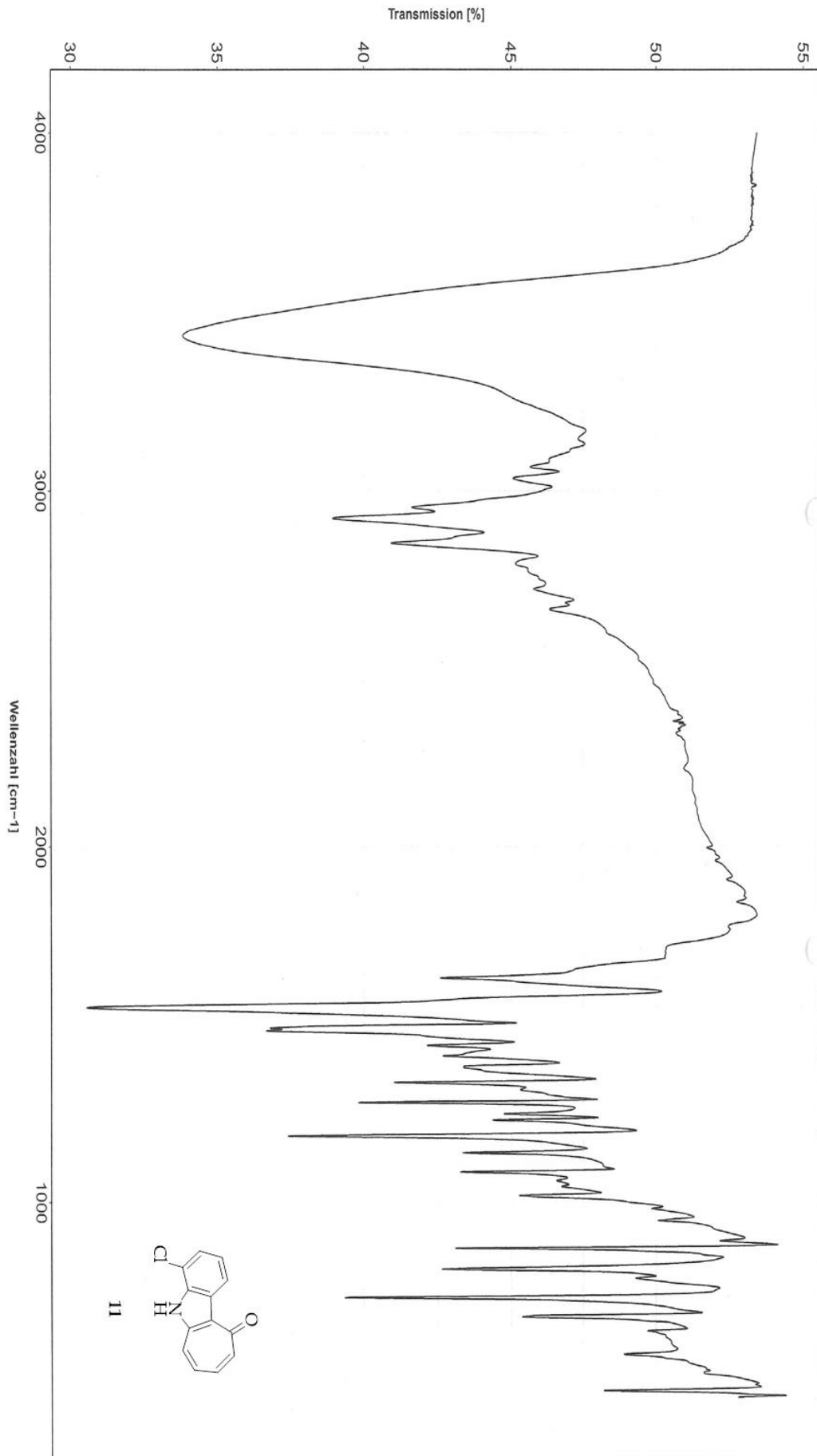
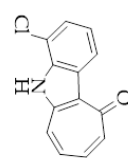
Figure S2: ^{13}C -NMR spectrum of 11

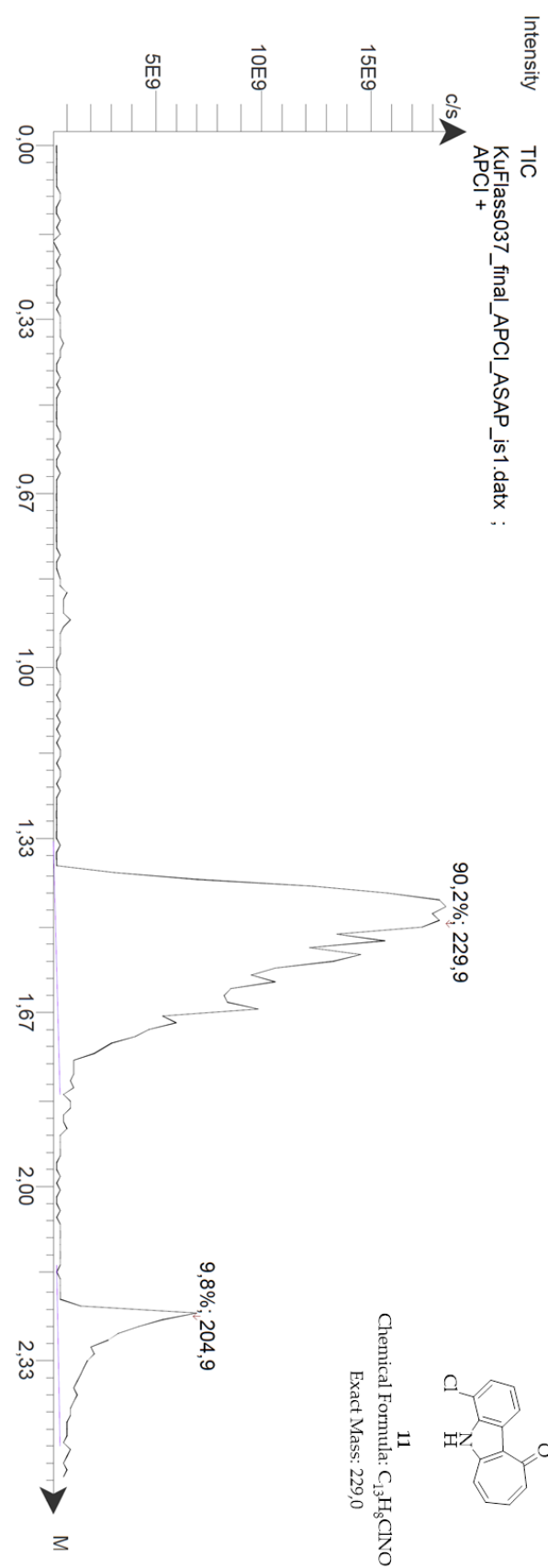
Figure S3: IR spectrum of 11





11

Chemical Formula: C₁₃H₈ClNO
Exact Mass: 229.0



5

Figure S4: MS (APCI+) of 11

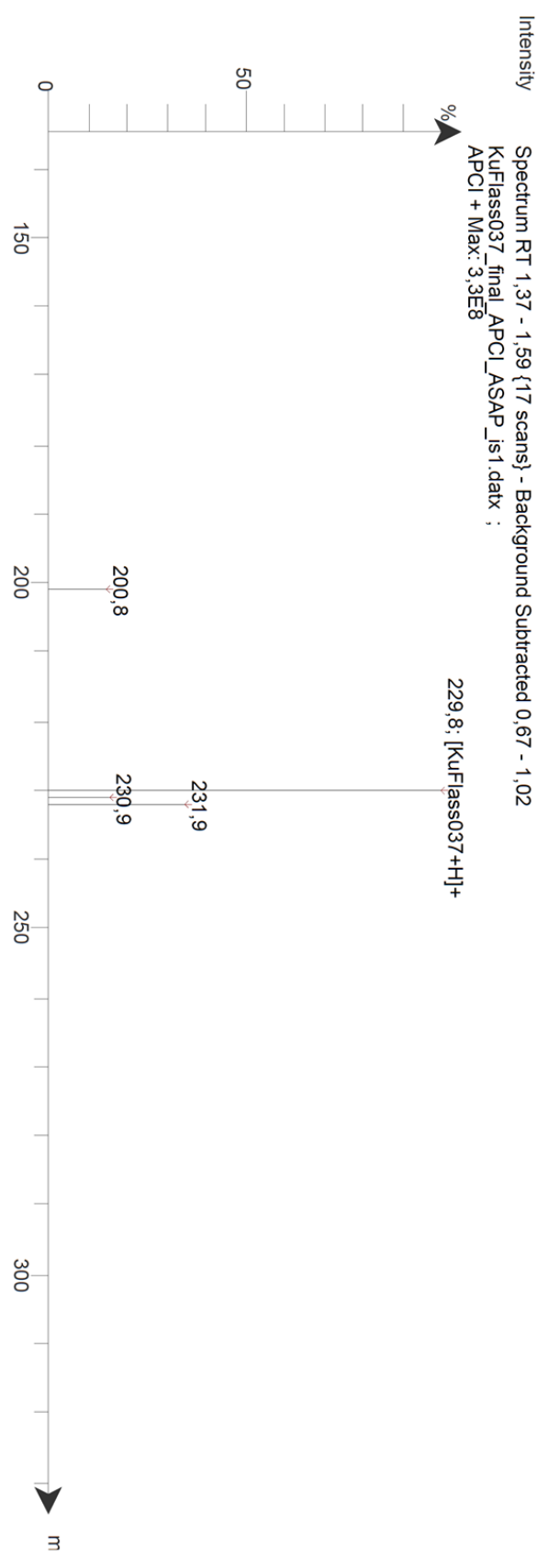


Figure S5: MS (APCI-) of 11

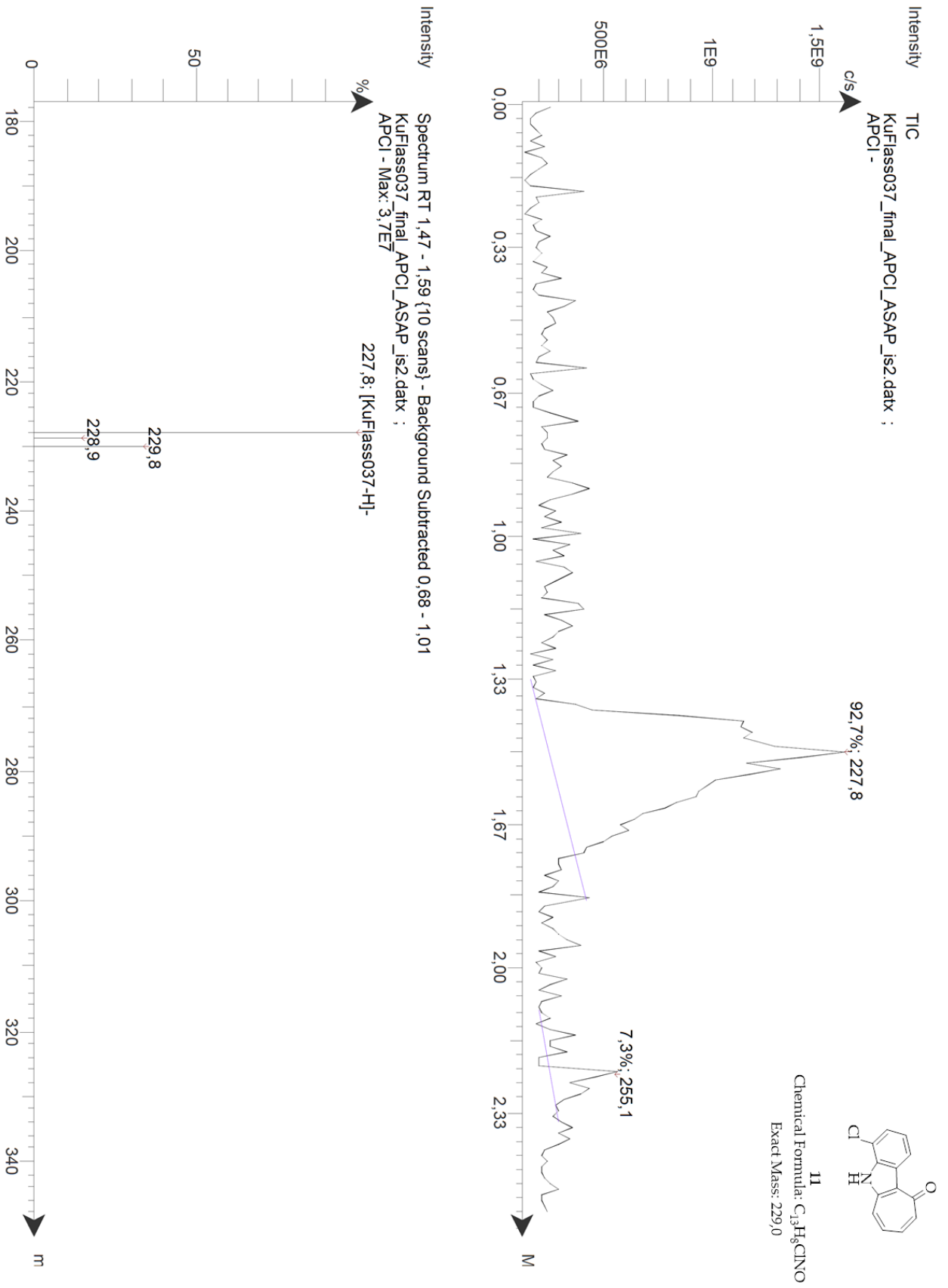
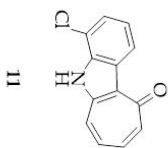
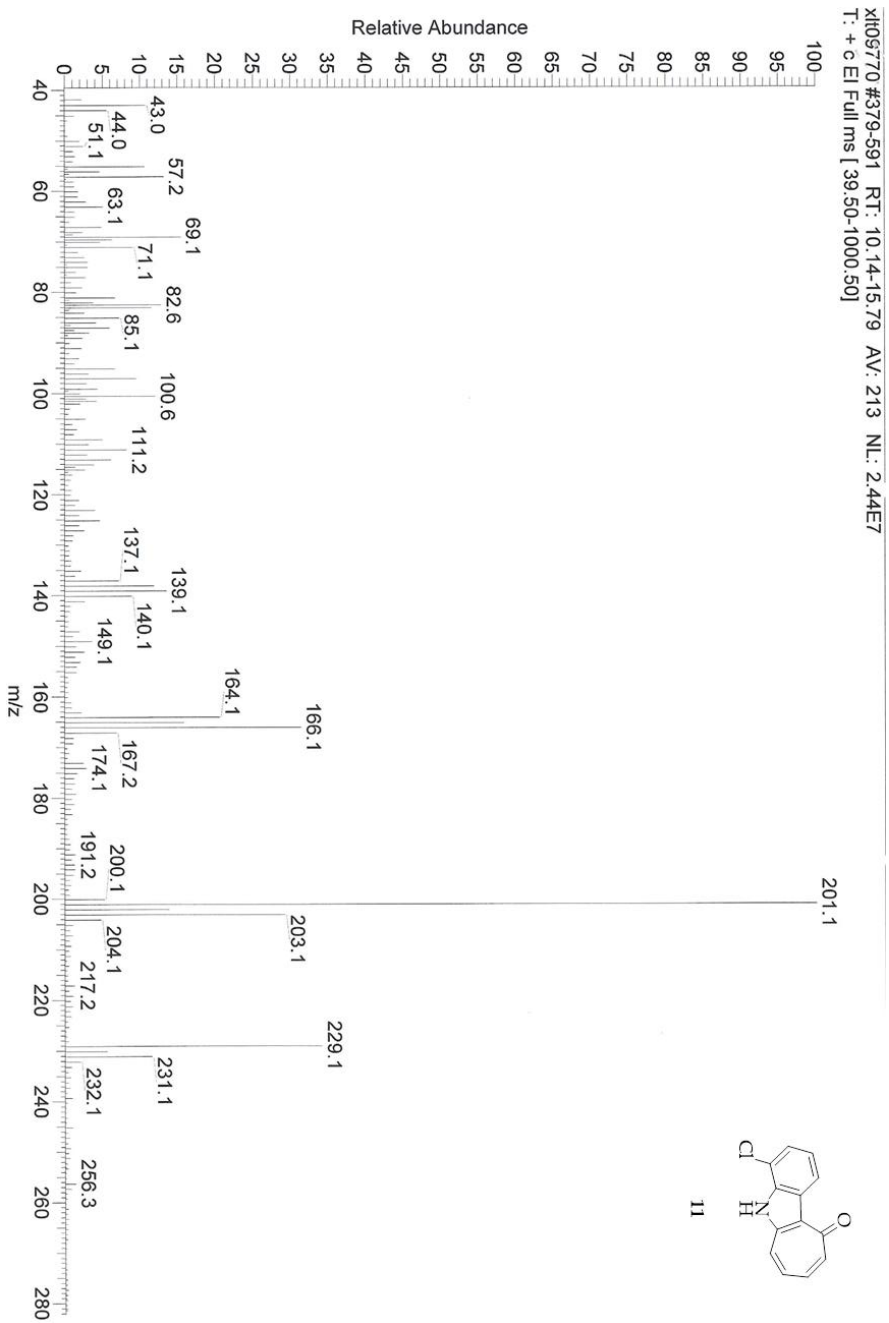


Figure S6: HRMS / full EIMS of 11



NOT ACQUIRING 28 Mar 2019 16:15 ELAPSED: AMOUNT: 0.00
 FILE: X1109819 STUDY: pm VOLUME: 0.00
 OPER: cm CLIENT: KINICK IND VOL: 0.00
 SMP: F1345hoff, pm zu X1109770
 COM: fm 229.02889 (Geladen) / 229.02923 (Exp.)

METHOD LIST:
 (init) userparam
 RESTORE
 AUTOSAMP VAL: D:INLET ICL PROC: DS PROC: S/T/W DLY
 L: X1109819 userparam

ANALYSIS:

ICLR	UL2DATA	RESTORE	UL1ST FILE:	INIT	0.00000	0.00000	0.00000
1:	229.02920	0.00000			0.00000	0.00000	0.00000
2:	229.02940	0.00000			0.00000	0.00000	0.00000
3:	229.02942	0.00000			0.00000	0.00000	0.00000
4:	229.02926	0.00000			0.00000	0.00000	0.00000
5:	229.02928	0.00000			0.00000	0.00000	0.00000
6:	229.02922	0.00000			0.00000	0.00000	0.00000
7:	229.02917	0.00000			0.00000	0.00000	0.00000
8:	229.02922	0.00000			0.00000	0.00000	0.00000
9:	229.02922	0.00000			0.00000	0.00000	0.00000
10:	229.02886	0.00000			0.00000	0.00000	0.00000
11:	0.00000	0.00000			0.00000	0.00000	0.00000
12:	0.00000	0.00000			0.00000	0.00000	0.00000
13:	0.00000	0.00000			0.00000	0.00000	0.00000
14:	0.00000	0.00000			0.00000	0.00000	0.00000
15:	0.00000	0.00000			0.00000	0.00000	0.00000
16:	0.00000	0.00000			0.00000	0.00000	0.00000
17:	0.00000	0.00000			0.00000	0.00000	0.00000
18:	0.00000	0.00000			0.00000	0.00000	0.00000
19:	0.00000	0.00000			0.00000	0.00000	0.00000
20:	0.00000	0.00000			0.00000	0.00000	0.00000
LINK	NONE	NONE			NONE	NONE	NONE
SIZE	10.00000	0.00000			0.00000	0.00000	0.00000
MEAN	229.02923	0.00000			0.00000	0.00000	0.00000
S.D.	2290.29234	0.00000			0.00000	0.00000	0.00000
MAX	229.02942	0.00000			0.00000	0.00000	0.00000
MIN	229.02896	0.00000			0.00000	0.00000	0.00000
UL1ST:							

Figure S7: Gradient HPLC of 11

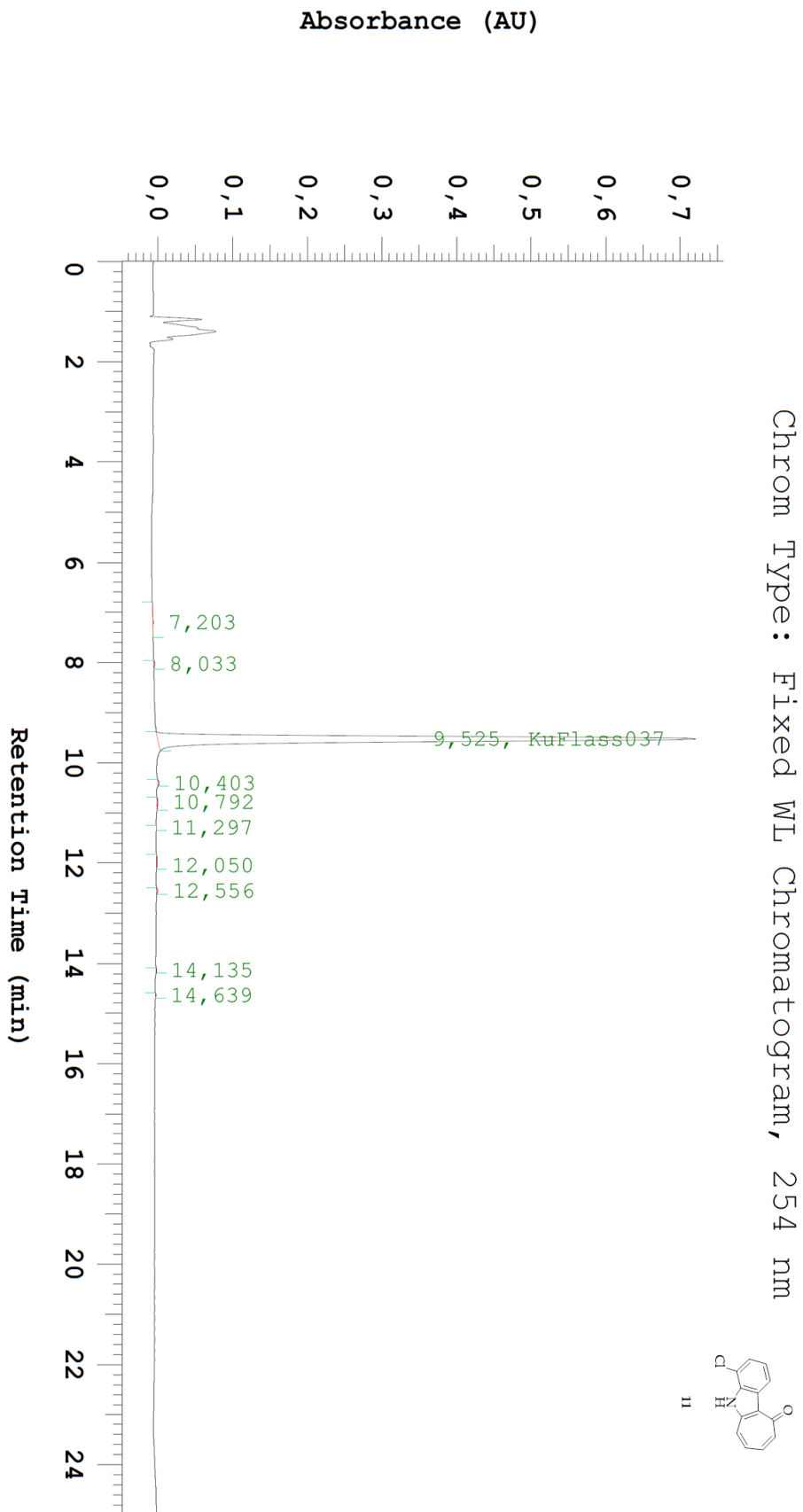


Figure S8: Isocratic HPLC of 11

