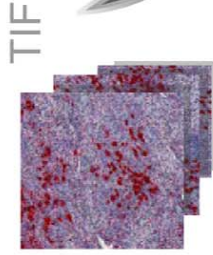
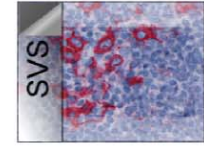


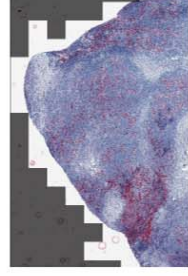
create ImprImage

conversion to standard TIF files



CD30 pipeline

calculate ROI

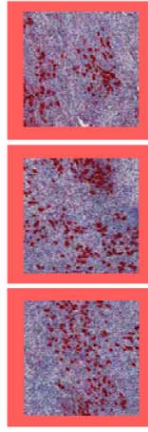


determine tissue

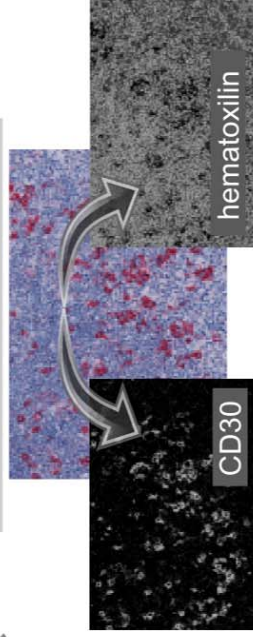
remove background tiles

split image

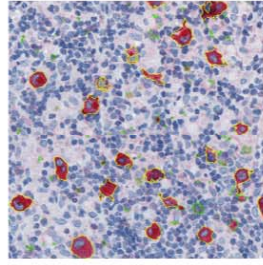
export tissue tiles with overlapping border



unmix color



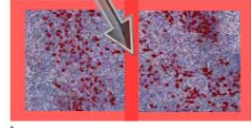
identify cell objects



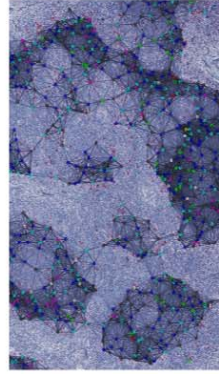
- thresholding of CD30 stain
- filtering of small cell fragments

remove duplicated cells

- border regions are processed twice to avoid dissecting of cell profiles
- filtering of identical cell objects



export cell graphs



- creation of cell graph and export in edge list format

CD30 pipeline