



This work is licensed under a Creative Commons Attribution License (CC BY 4.0).

Research article

Mysterious chokeberries: new data on the diversity and phylogeny of *Aronia* Medik. (Rosaceae)

Alexey SHIPUNOV^{1,*}, Sofia GLADKOVA², Polina TIMOSHINA³, Hye Ji LEE⁴,
Jinhee CHOI⁵, Sarah DESPIEGELAERE⁵ & Bryan CONNOLLY⁵

^{1,4,5,6}Minot State University, Biology, 500 University Ave, Minot, ND, USA.

^{2,3}Department of Biology, Moscow State University, Russia.

⁷Framingham State University, Biology, 100 State St, Framingham, MA, USA.

*Corresponding author: dactylorhiza@gmail.com

²Email: mgu@univer.msu.ru

³Email: mgu@univer.msu.ru

⁴Email: msu@minotstateu.edu

⁵Email: msu@minotstateu.edu

⁶Email: msu@minotstateu.edu

⁷Email: bconnolly@framingham.edu

Abstract. *Aronia* Medik. (chokeberry, Rosaceae) is a genus of woody shrubs with two or three North American species. Species boundaries and relationships between species of *Aronia* are frequently under question. The only European species in the genus, *A. mitschurinii* A.K.Skvortsov & Maitul., is suggested to be an inter-generic hybrid. In order to clarify the relationships between species of *Aronia*, we performed several morphometric and molecular analyses and found that the molecular and morphological diversity within data on American *Aronia* is low, and species boundaries are mostly not clearly expressed. Whereas morphology is able to separate American species from *A. mitschurinii*, there is no support for such discrimination from the molecular data; our analyses did not reveal evidence of *A. mitschurinii* hybrid origin. We believe that higher-resolution markers are needed to resolve species boundaries and putative hybridization events.

Keywords. *Aronia*, Rosaceae, DNA, morphology, hybridity.

Shipunov A., Gladkova S., Timoshina P., Lee H.J., Choi J., Despiegelaere S. & Connolly B. 2019. Mysterious chokeberries: new data on the diversity and phylogeny of *Aronia* Medik. (Rosaceae). *European Journal of Taxonomy* 570: 1–14. <https://doi.org/10.5852/ejt.2019.570>

Introduction

Chokeberry, *Aronia* Medik. (Medikus 1789), is a genus of woody shrubs in the family Rosaceae. The boundaries of species of *Aronia* are unclear and typically three (Hardin 1973; Persson Hovmalm *et al.* 2004) or two (Robertson *et al.* 1991) species are recognized in North America. The following North American species are recognized: 1) *Aronia melanocarpa* (Michx.) Elliott or black chokeberry (with

diploid and tetraploid forms; Connolly 2014), 2) *Aronia arbutifolia* (L.) Pers. or red chokeberry, 3) *Aronia* × *floribunda* (Lindl.) Spach (synonyms: *Aronia* × *prunifolia* (Marshall) Rehder, *Aronia atropurpurea* Britton) or purple chokeberry (likely of hybrid origin with possible subsequent introgression; Connolly 2014). The only European species in the genus, *A. mitschurinii* (Skvortsov & Majtulina 1982; Skvortsov *et al.* 1983) or Mitschurin's chokeberry is suggested to be an inter-generic hybrid × *Sorbaronia mitschurinii* (Skvortsov & Maitul.) Sennikov, but its origin is not yet clarified (Leonard 2011; Smolik *et al.* 2011; Leonard *et al.* 2013; Sennikov & Phipps 2013; Vinogradova & Kuklina 2014).

Chokeberries are agriculturally promising for fruit and nutraceuticals, and also have applications as ornamental landscape plants (Brand 2010; Taheri *et al.* 2013; Connolly 2014). *Aronia mitschurinii* has bigger and tastier fruits than other aronias and was adopted as valuable agricultural fruit plant across North America (Kask 1987).

We believe that instability in *Aronia* taxonomy is largely the result of insufficient sampling; thus, our goal was to increase sampling, use expert knowledge to identify or re-identify our samples, and then to employ DNA sequence analyses and advanced morphometry methods in order to perform a comprehensive analysis of *Aronia* diversity which will clarify species relationships.

Material and methods

DNA sequencing and molecular analysis

We sequenced the nuclear rDNA internal transcribed spacer 2 (ITS2), the chloroplast encoded *rbcL* gene and *trnL-F* spacer (Kuzmina & Ivanova 2011) from several representatives of each of five *Aronia* species (34, 38 and 15, respectively). These markers are commonly used for studying the phylogeny and origins of angiosperms species including Rosaceae (Campbell *et al.* 2007; Li *et al.* 2012; Lo & Donoghue 2012; Dłuzewska *et al.* 2013; Zarrei *et al.* 2014). In addition, we amplified and sequenced the second intron of the nuclear low-copy LEAFY gene which has been considered a useful marker in phylogenetic analysis of Rosaceae (Oh & Potter 2003; Lo *et al.* 2007; Li *et al.* 2017).

We obtained 42 tissue samples from herbarium collections in the USA (CAS, F, HUH, JEPS, MO, NY, UC, US) and Russia (MHA). We also used 31 freshly collected leaf tissue samples taken in the field and from the Rosaceae living collection of the University of Connecticut (USA). Field collected material (mostly of *A. mitschurinii*) was from the Central Russian Tverj and Moscow regions, where tissue samples were obtained from the living plants growing in the cultivation and the living plants that have escaped from the cultivation. The list of samples, all sequences, datasets and scripts are available on Zenodo (<https://doi.org/10.5281/zenodo.3276157>). All sequences were also submitted to GenBank.

In addition to *Aronia*, we used samples of *Sorbus aucuparia* L. (Linnaeus 1753) and of the intergeneric hybrid, × *Sorbaronia fallax* (C.K.Schneid.) C.K.Schneid. (*Sorbus aucuparia* × *Aronia melanocarpa*: Schneider 1906; Connolly 2009). GenBank sequences of *S. aucuparia* were also used. The first sample is phylogenetically distant from both *Aronia* and *Sorbus* s.str. (Sun *et al.* 2018) and therefore was used as an outgroup in most phylogenetic analyses. Considering problems with *Aronia* species identification (typical issue is that proper determination requires checking the autumn coloration of fruits: Hardin 1973), GenBank sequences of this genus were not thought to be reliably identified.

DNA was extracted using either a MO BIO PowerPlant DNA Isolation Kit (MO BIO Laboratories, Carlsbad, California, USA), or NUCLEOSPIN Plant II Kit (MACHEREY-NAGEL GmbH & Co. KG, Düren, Germany). Dry plant leaf material (typically, 0.05–0.09 g) was powdered using a sterile mortar and pestle and then processed in accordance with the supplied protocol. We increased the lysis time to 30 minutes and used thermomixer on the slow rotation speed (350 rpm) instead of water bath.

Nanodrop 1000 Spectrophotometer (Thermo Scientific, Wilmington, DE, USA) was used to assess the concentration and purity (the 260/280 nm ratio of absorbance) of DNA samples.

We sequenced the markers mentioned above using primers and protocols in accordance with recommendations of the Barcoding of Life Consortium (Kuzmina & Ivanova 2011) and the LFY1/LFY2 primers (Oh & Potter 2003). PCR was carried out as follows: the reaction mixture in a total volume of 20 μ L contained 5.2 μ L of PCR Master Mix (components from QIAGEN Corporation, Germantown, Maryland), 1 μ L of 10 μ M forward and reverse primers, 1 μ L of DNA solution from the extraction above and 11.8 μ L purified water. Samples were incubated in a thermal cycler: 94° for 5 min, then 35 cycles of 94° for 1 min; 51° for 1 min, 72° for 2 min, and finally 72° for 10 min. Regardless to the marker and species, we always received single band PCR products. They were sent for purification and sequencing to Functional Biosciences, Inc. (Madison, Wyoming) and sequenced there in accordance with standard protocol. Sequences were obtained, assembled and edited using Sequencher™ 4.5 (Genes Codes Corporation, Ann Arbor, Michigan, USA) and then aligned with AliView / Muscle (Larsson

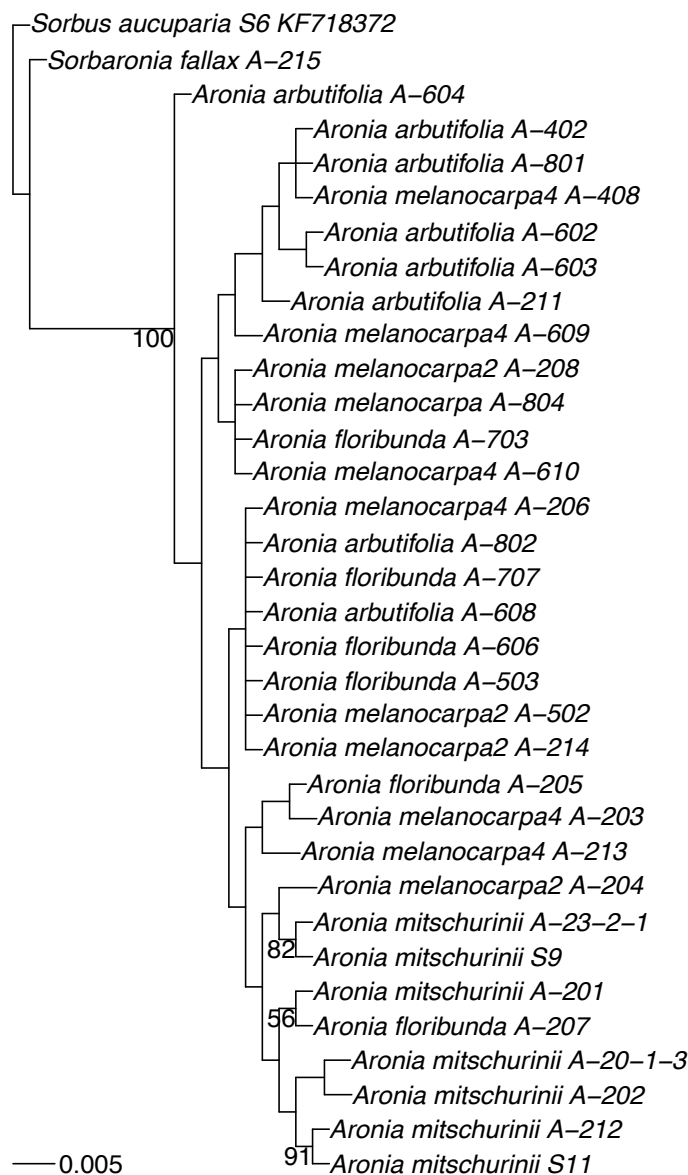


Fig. 1. ML tree resulted from the analysis of concatenated ITS2 and *rbcl* sequences.

2014) and ClustalX (Thompson *et al.* 1997) using gap opening cost 9, gap extension cost 0.05 and IUB weight matrix.

In total, we produced 309 DNA sequences, and after the preliminary analysis, selected the 113 longest and minimally noisy sequences for further research. Those selected sequences belonged to 42 individual plants from all species of *Aronia* (12–24 sequences per species). In terms of the markers, most successful were the amplification and subsequent sequencing of *rbcL* (35 sequences) and the least successful the amplification of the first variant of LEAFY second intron (6 sequences). Phylogenetic analyses were implemented with the help of the R ape and phangorn packages (Paradis *et al.* 2004; Schliep 2011). We used the Kimura distance, neighbor-joining and maximum likelihood (under a GTR model with gamma distribution selected using the Akaike information criterion implemented in R) trees for the most of our calculations.

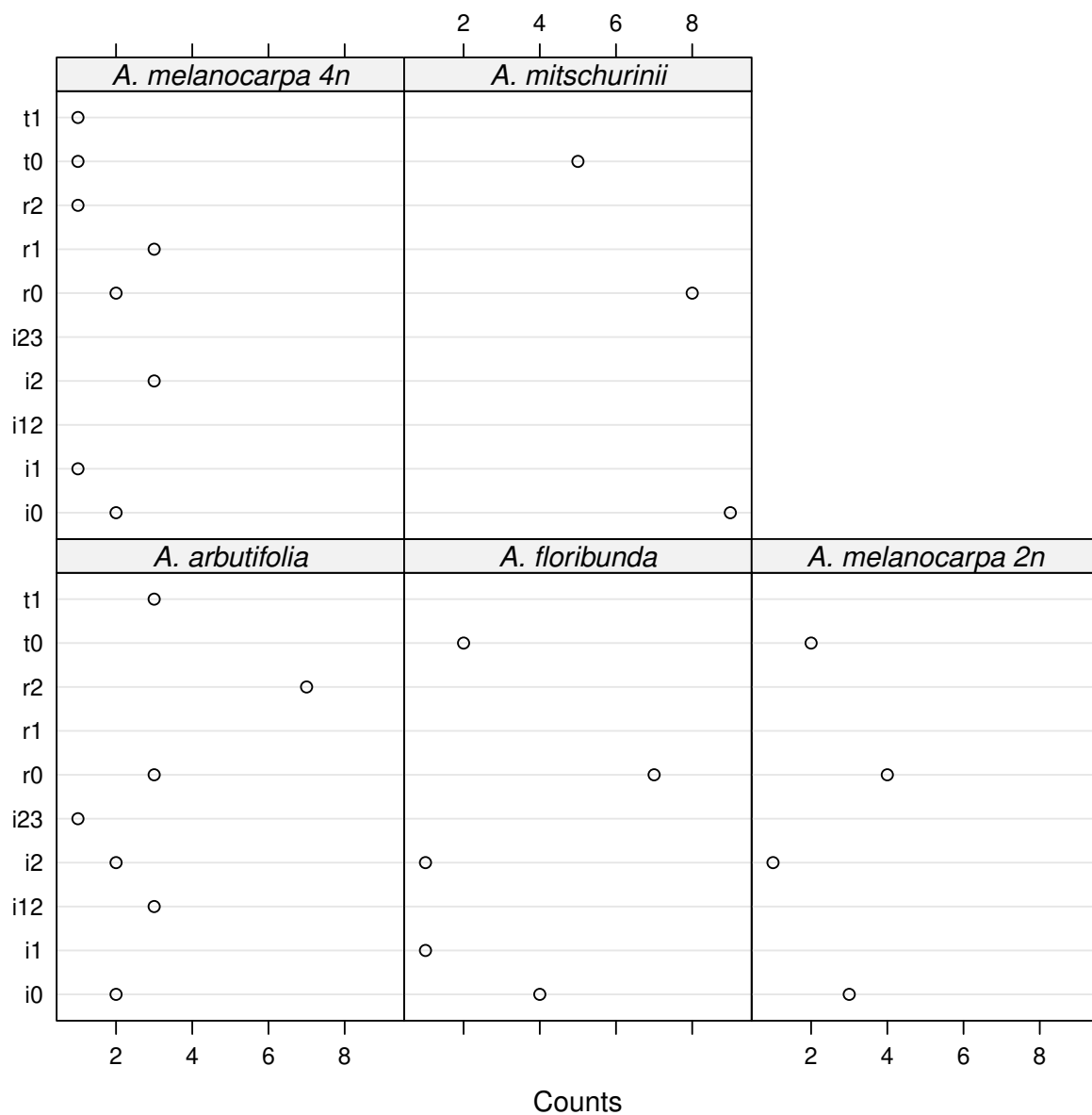


Fig. 2. Abundance of haplotypes per species. Each rectangle is a species. The first letter of haplotype name represent the marker: i for ITS2, r for *rbcL* and t for *trnL-F*. Dots correspond with haplotype counts.

Morphometric analyses

We gathered morphometric data from 436 herbarium samples and living plants of *Aronia* (including 187 samples of *A. mitschurinii*). We applied several methods of multivariate analyses using both ‘classical’ and geometric morphometrics approaches. As the dried herbarium samples might suffer from shrinking (Volkova *et al.* 2011), we compared the fresh and the dried herbarium samples of *A. mitschurinii* to calculate the shrinking coefficient. This coefficient was less than 4%, therefore shrinking was not taken into account in our geometric morphometrics analyzes.

Several leaf-related morphological characters were measured, including ‘classic’ petiole and leaf length, leaf maximal width and position of maximal width. In geometric morphometrics analyses, we used the standard thin plate spline approach (Zelditch *et al.* 2012) with 10 landmarks located on the tip and base of the leaf plus on the points of maximal curvature on the leaf contour (see Fig. 7 for the examples). Coordinates of the landmarks were written to the data file with tpsDig (Rohlf 2010).

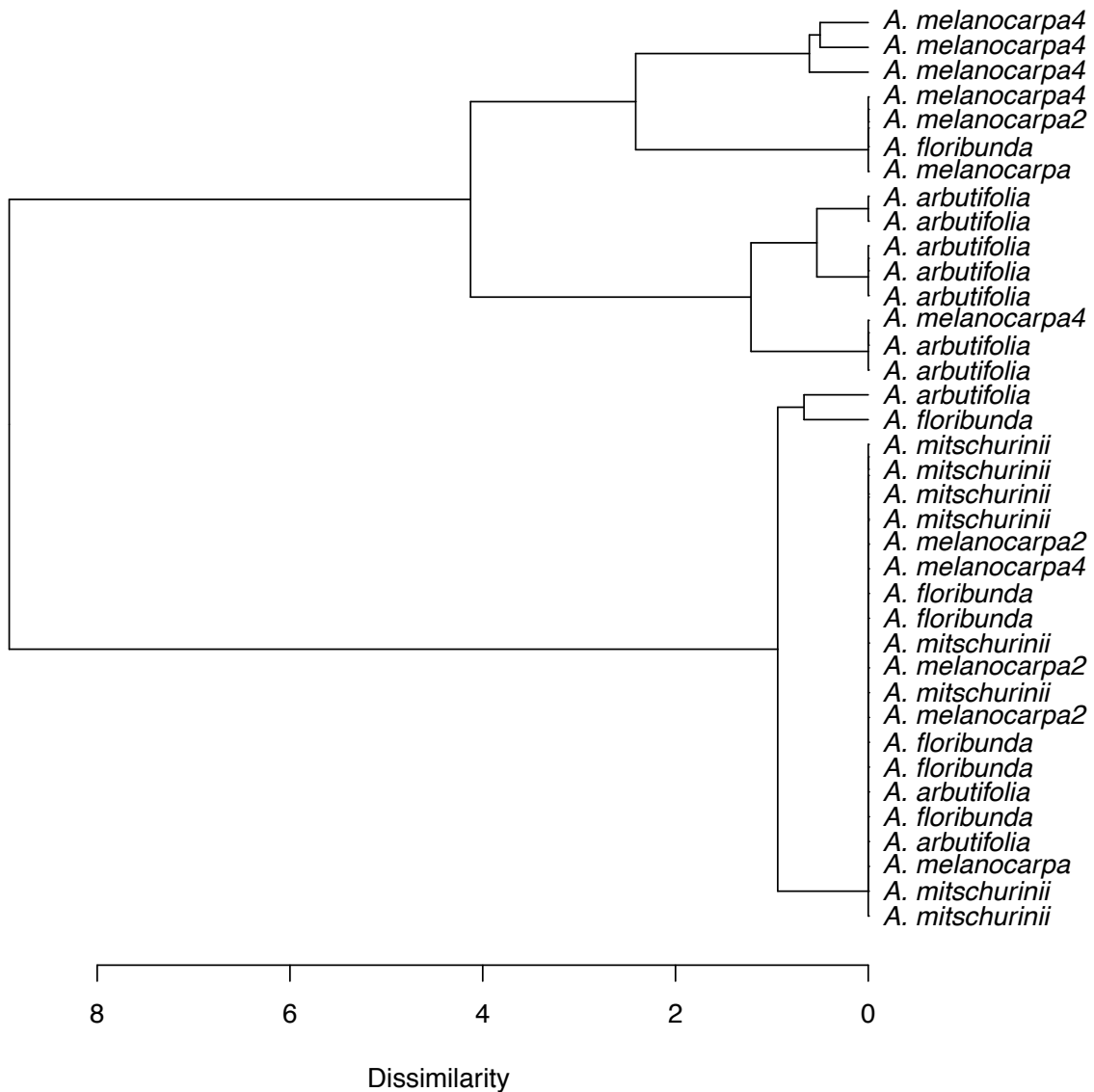


Fig. 3. Cluster analysis (binary distance, Ward clustering method) of the occurrence of eight basic *rbcL* and ITS2 haplotypes.

Consensus configuration, values of principal relative and partial warps (which characterize the degree of differences between the specimen and consensus configuration), were calculated with the R geomorph package (Adams & Otárola-Castillo 2013) which implements TPS analysis in a way similar to principal component analysis (PCA). Principal component analysis of the relative warps matrix was employed for the classification of leaf shapes, similarly to the way described elsewhere (Shipunov & Bateman 2005).

Many statistical methods have the ability to combine different types of data, and we used this to study the joint matrix that includes morphological characters and haplotype data of exactly the same samples (similar to Shipunov *et al.* 2004). We employed model-based clustering (Scrucca *et al.* 2016) and t-SNE algorithm (t-SNE is ‘t-Distributed Stochastic Neighbor Embedding’) (van der Maaten & Hinton 2008). The latter is a nonlinear dimensionality reduction algorithm, popular for representing high-dimensional data. More simple clustering of haplotype occurrence data used binary distances and Ward linkage. All statistical analyses were performed in R (R Core Team 2018).

Results

DNA sequencing and molecular analysis

Most of the analyses were based on ITS2 and *rbcL* alignments. Analysis of the *trnL-F* and LEAFY data was more problematic, since they did not amplify well from many of the studied herbarium samples;

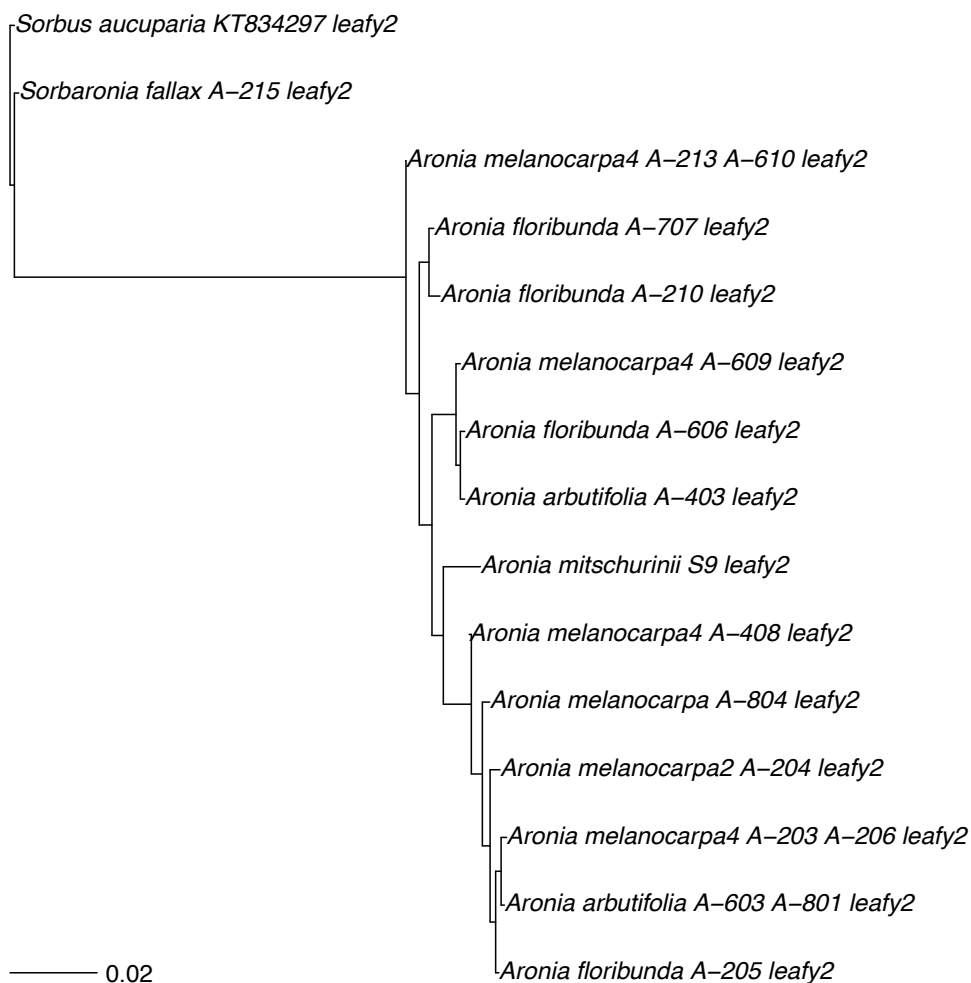


Fig. 4. ML tree from the LEAFY2 sequences.

therefore, these markers were analyzed separately. The resulting trees always had extremely short branches (Fig. 1). Bootstrap was high enough ($> 97\%$) to support only the whole *Aronia* group. Within *Aronia*, there were no clades receiving high statistical support.

Within each locus, most of our sequences differ only by several nucleotides. Across all sequences analyzed, we found ten haplotypes.

We counted only three haplotypes from *A. mitschurinii* samples whereas the more diverse sets were found in *A. melanocarpa* and *A. arbutifolia* (Fig. 2). As our phylogeny trees are not highly informative, we employed the cluster analysis of the haplotype occurrence (Fig. 3) which revealed the tendency of *A. arbutifolia* samples to group in one cluster (7 out of 10 are in one group). *Aronia mitschurinii* samples did not form a cluster, and grouped together with the bulk of other *Aronia*. Data from our *trnL-F* sequences were generally in agreement with *rbcL* data. Only two haplotypes were found, one the most frequent and the other specific to *A. arbutifolia*.

We were able to sequence both variants (potential paralogs) of LEAFY second intron (Burgess *et al.* 2015), and therefore constructed two separate datasets, one for each variant. From \times *Sorbaronia fallax*, we amplified the second copy, which was identical to the same copy of *Sorbus aucuparia* (GenBank ID KT834297). Each LEAFY dataset contained at least one *A. mitschurinii* sample. In the analyses of both

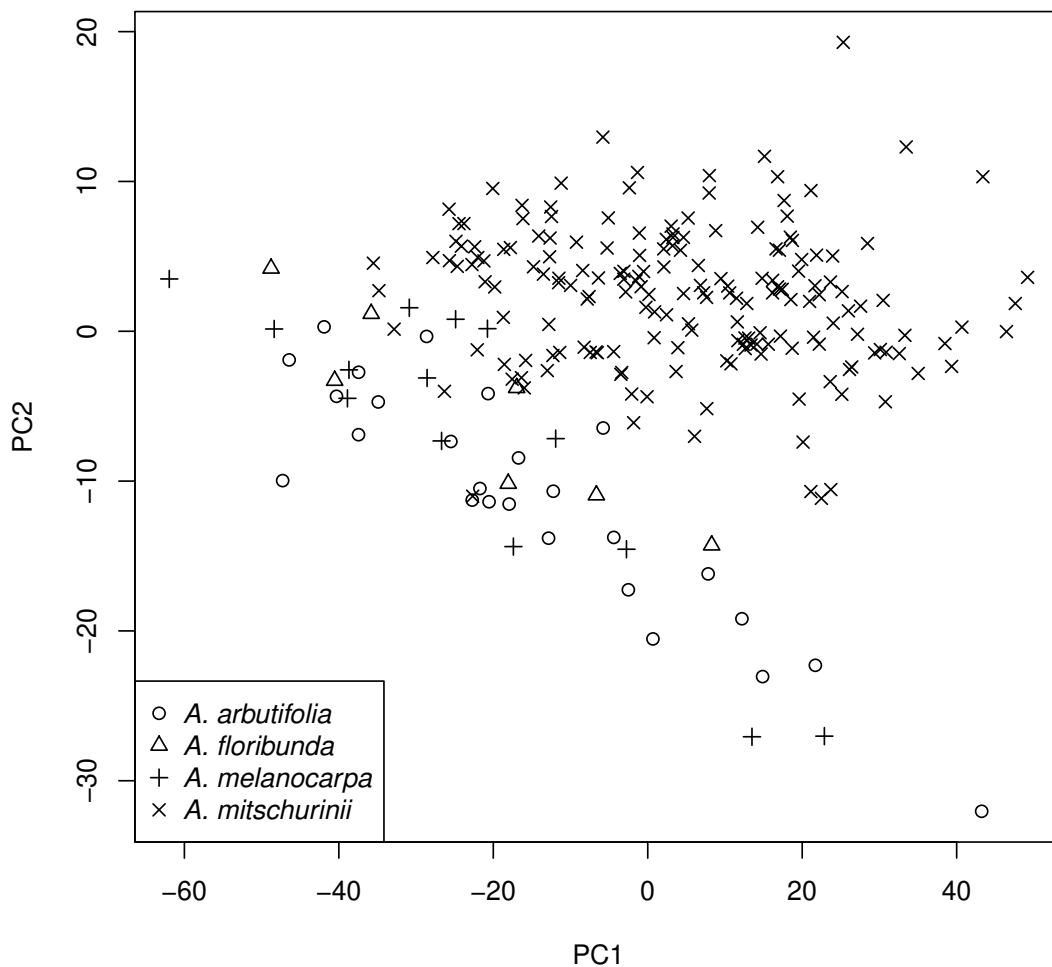


Fig. 5. Ordination on the plane of first two principal components from the analysis of morphological data.

datasets, *A. mitschurinii* samples always robustly grouped with *A. melanocarpa* and did not group with *Sorbus*. This pattern is illustrated on Fig. 4 which reflects relationships within the second, most sample-rich LEAFY dataset.

Morphometric and combined analyses

The principal component analysis (PCA) of morphometric data (Fig. 5) was able to clearly separate the *A. mitschurinii* samples. Samples of other species did not form clusters.

In the case of joint matrix (morphological characters + haplotype data), the scarcity of *A. mitschurinii* data did not allow for robust conclusions, but it is remarkable that these two *A. mitschurinii* samples occupy a separate branch on the minimum spanning tree and therefore distinctive (Fig. 6) from all other *Aronia*.

Geometric morphometrics was first used to produce the consensus shapes for each of our species. These shapes demonstrated the bending required to make imaginary thin plate splines to converge. Figure 7 shows that *A. mitschurinii* samples require the smaller deformations, whereas *A. arbutifolia*

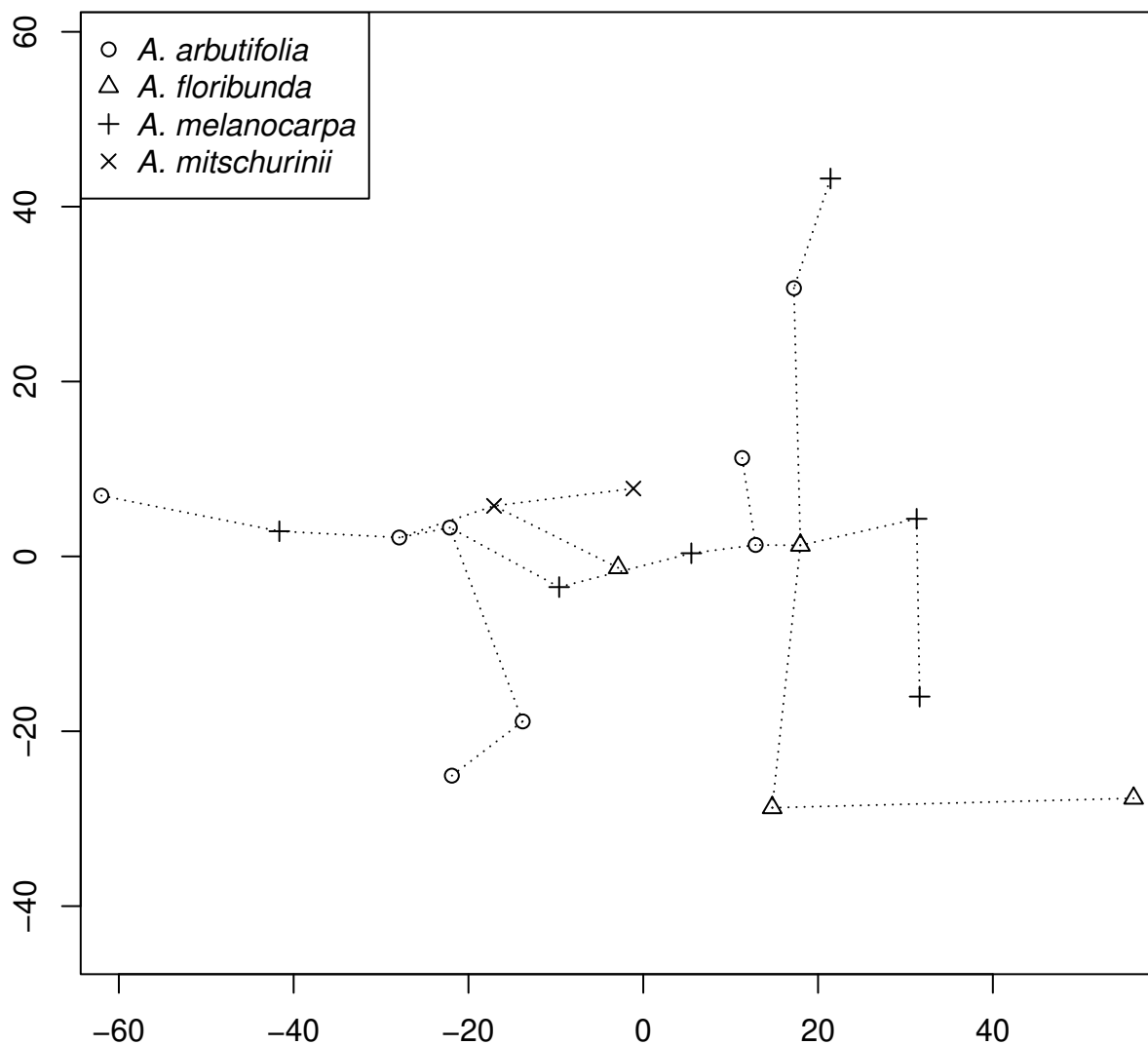


Fig. 6. Ordination from multidimensional scaling of the Gower distance matrix from the combined dataset of haplotypes occurrence and morphology.

and *A. floribunda* require more modifications of their average shapes. PCA ordination of relative warps provided another view on the diversity of our samples. It was similar to the morphology ordination, and separated *A. mitschurinii* whereas other species were intermixed (Fig. 8).

We also tried two combined approaches which included geometric morphometrics data together with (1) morphology and (2) morphology + haplotype data from the same samples. PCA was not really helpful for the analysis of geometric morphometrics + morphology data, but t-SNE (van der Maaten & Hinton 2008) allowed to arrange the samples in more understandable way (Fig. 9); here most of *A. mitschurinii* samples were clearly separated from the rest of *Aronia*. On the other hand, the model-based clustering (Scrucca *et al.* 2016) returned the clustering model with only one component (i.e., no internal clusters).

Discussion

Our phylogenetic analyses show that the overall genetic and morphological diversity within *Aronia* is low, and no clear species boundaries could be detected based on DNA data. In our morphological

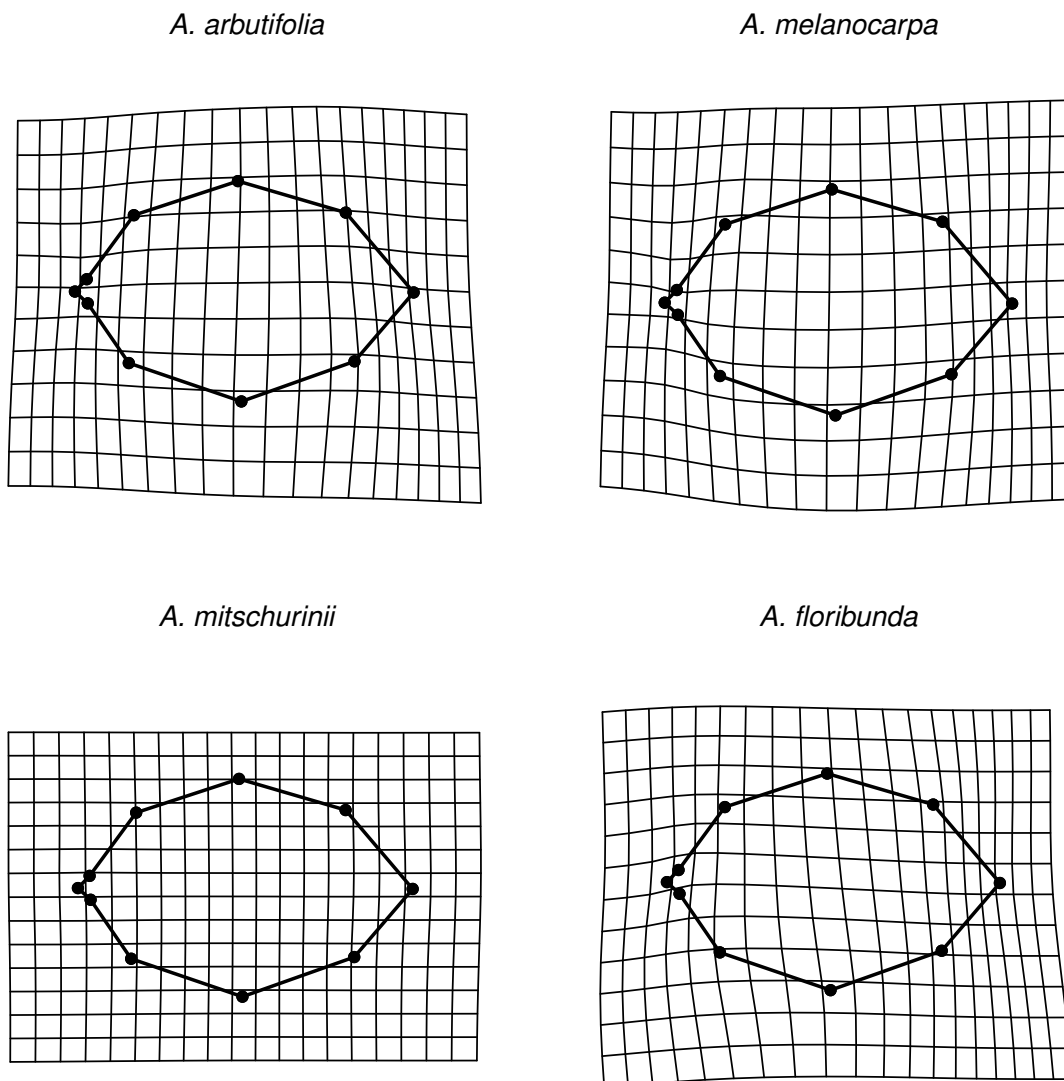


Fig. 7. Transformation grids of leaf shape from four *Aronia* species, with deformations required to reach the overall average shape.

and combined analyses, only *A. mitschurinii* could be separated with confidence. These results are in contrast to Connolly (2014) where four *Aronia* species could be morphologically distinguished.

This discrepancy between morphological and molecular data could mean that *Aronia* still awaits more advanced methods of data collection and data analysis. However, considering the diversity of our approaches which include phylogeny trees, haplotype analysis, classic and geometric morphometry and combined integrative analysis, the possible conclusion is that at least some borders within *Aronia* are not expressed as it is typical in neighboring genera (Guo *et al.* 2012, Li *et al.* 2012) but may delimit only subspecific or lower level variation; it is even possible that most of the *Aronia* samples represent one polymorphic species.

No clear similarities, morphological or genetic, between any *Aronia* and *Sorbus aucuparia* were discovered. The × *Sorbaronia fallax* sample has the ITS2 and second copy of LEAFY second intron identical to *Sorbus aucuparia*, indicative of a hybridization event between *Sorbus aucuparia* and *Aronia melanocarpa*. However, this pattern was not present in our samples of *A. mitschurinii*. Therefore, we believe that the hybrid origin of *A. mitschurinii* is under question. This hypothesis has an independent support from observations on *A. mitschurinii* propagation which almost always results in the uniform progeny (Vinogradova & Kuklina 2014). In addition, whereas morphology alone allows for the separation

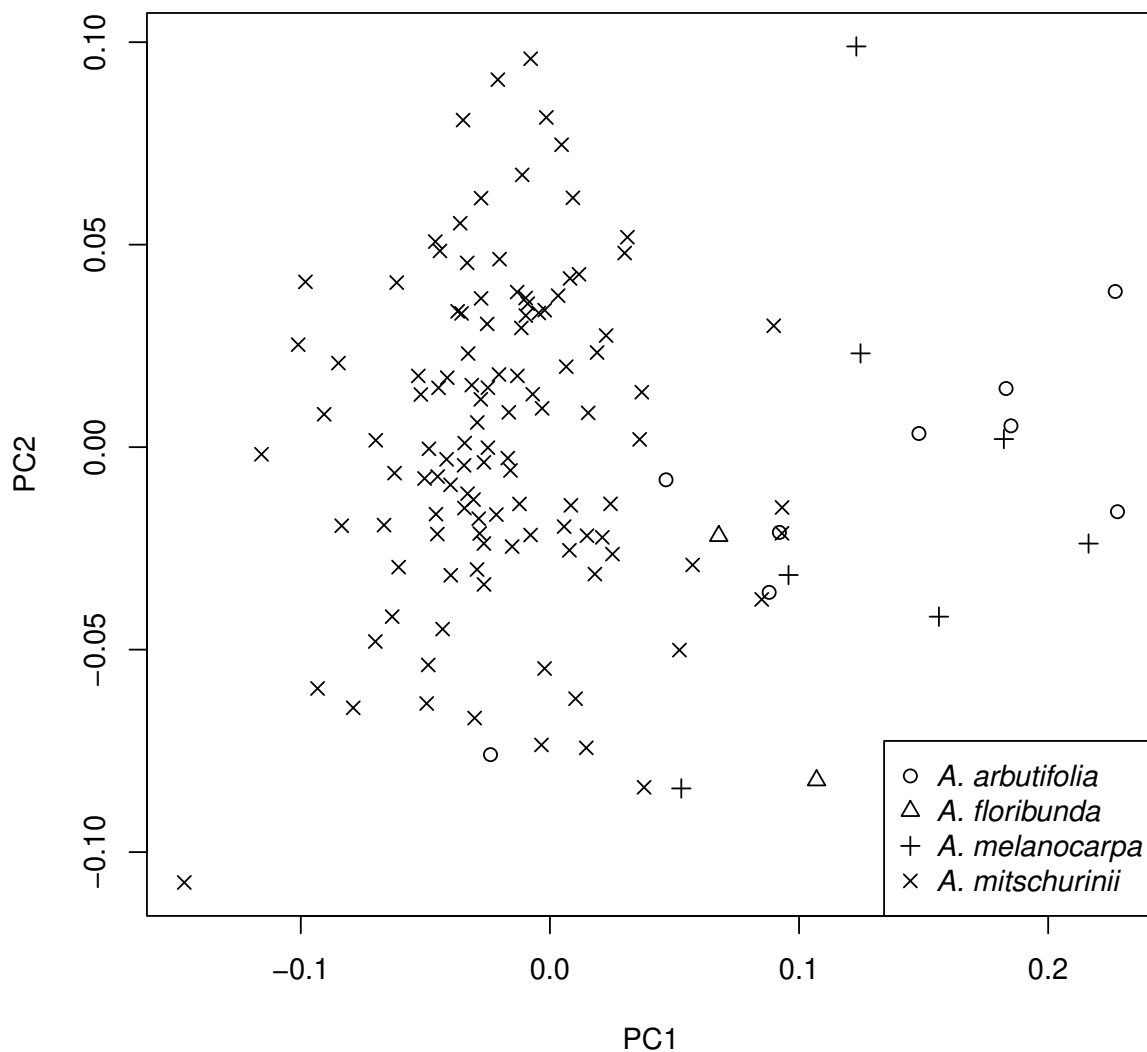


Fig. 8. Ordination from the principal component analysis of relative warps.

of *A. mitschurinii* from other species, there is no support of such dissimilarity from molecular data. DNA-wise, *A. mitschurinii* does not differ from the other *Aronia* species.

The apparent conflict between AFLP (Leonard *et al.* 2013) and our sequencing analysis could be due to over-sensitivity of the first analysis (Pelser *et al.* 2003). It is important to note that Leonard *et al.* (2013) did not show the affinity of *A. mitschurinii* to the *Sorbus*, they have had only found similarities with \times *Sorbaronia* hybrids.

It is also possible that *A. mitschurinii* is a backcross to *Aronia*, and the *Sorbus* genome is largely lost. Therefore, we cannot fully exclude the possibility that thorough cloning of multiple markers or high-throughput sequencing, might reveal the traces of others genomes in *A. mitschurinii*. Thus, the next step in *Aronia* phylogeny research should involve more high resolution molecular markers, especially multilocus nuclear data.

Acknowledgements

We are grateful to the curators of CAS, HUH, JEPS, MHA, MO, NY, UC and US herbaria for the kind permission to analyze herbarium samples. *Aronia* samples from Russia were collected mostly around

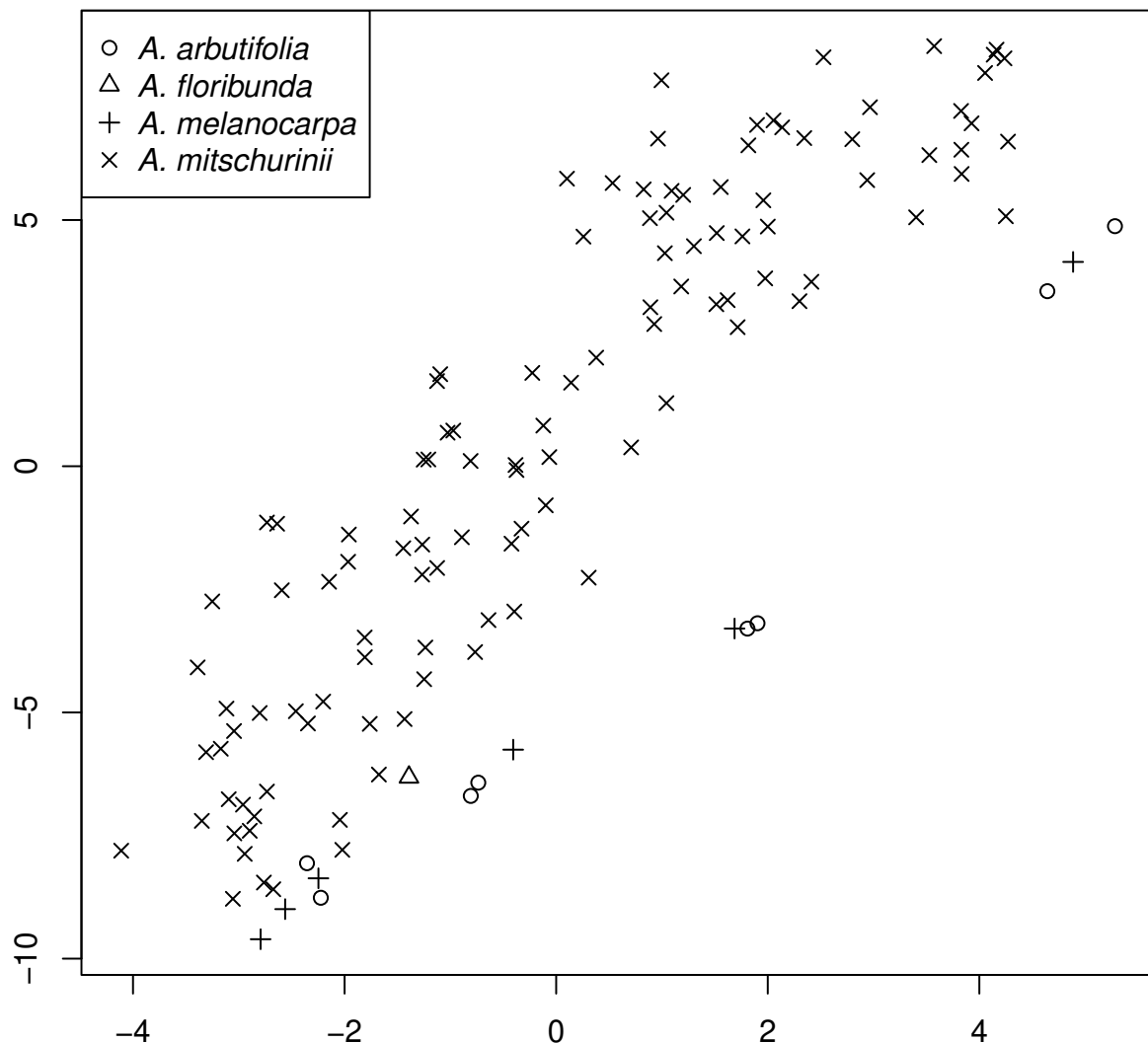


Fig. 9. t-SNE ordination of the combined morphology + geometric morphometrics data.

‘Lake Moldino’ biological station, and we thank the station staff for the assistance. We thank the College of Art and Sciences and the Department of Biology of Minot State University for the financial support. From May 2014, this research is supported by North Dakota INBRE.

References

- Adams D.C. & Otarola-Castillo E. 2013. geomorph: an R package for the collection and analysis of geometric morphometric shape data. *Methods in Ecology and Evolution* 4: 393–399. <https://doi.org/10.1111/2041-210X.12035>
- Brand M.H. 2010. *Aronia*: native shrubs with untapped potential. *Arnoldia* 67: 14–25.
- Burgess M.B., Cushman K.R., Doucette E.T., Frye C.T. & Campbell C.S. 2015. Understanding diploid diversity: A first step in unraveling polyploid, apomictic complexity in *Amelanchier*. *American Journal of Botany* 102: 2041–2057. <https://doi.org/10.3732/ajb.1500330>
- Campbell C.S., Evans R.C., Morgan D.R., Dickinson T.A. & Arsenault M.P. 2007. Phylogeny of subtribe Pyrinae (formerly the Maloideae, Rosaceae): limited resolution of a complex evolutionary history. *Plant Systematics and Evolution* 266: 119–145. <https://doi.org/10.1007/s00606-007-0545-y>
- Connolly B.A. 2009. × *Sorbaronia fallax* (Rosaceae): A new record of an intergeneric hybrid in Connecticut. *Rhodora* 111: 123–125. <https://doi.org/10.3119/08-23.1>
- Connolly B.A. 2014. *Collection, description, taxonomic relationships, fruit biochemistry, and utilization of Aronia melanocarpa, A. arbutifolia, A. prunifolia, and A. mitschurinii*. PhD thesis. Paper 342. University of Connecticut.
- Dluzewska J., Slesak I. & Kruk J. 2013. Molecular analysis of *Sorbus* sp. from the Pieniny Mts. and its relation to other *Sorbus* species. *Acta Biologica Cracoviensia, Series Botanica* 55: 86–92. <https://doi.org/10.2478/abcsb-2013-0009>
- Guo W., Yu Y., Shen R.J., Liao W.B., Chin S.W. & Potter D. 2011. A phylogeny of *Photinia* sensu lato (Rosaceae) and related genera based on nrITS and cpDNA analysis. *Plant Systematics and Evolution* 291: 91–102. <https://doi.org/10.1007/s00606-010-0368-0>
- Hardin J.W. 1973. The enigmatic chokeberries. *Bulletin of the Torrey Botanical Club* 100: 178–184. <https://doi.org/10.2307/2484630>
- Kask K. 1987. Large-fruited black chokeberry (*Aronia melanocarpa*). *Fruit Varieties Journal* 41: 47.
- Kuzmina M. & Ivanova N. 2011. Primer sets for plants and fungi. Available from: http://ccdb.ca/site/wp-content/uploads/2016/09/CCDB_PrimerSets-Plants.pdf [accessed 19 Jun. 2019].
- Larsson A. 2014. AliView: a fast and lightweight alignment viewer and editor for large data sets. *Bioinformatics* 30: 3276–3278. <https://doi.org/10.1093/bioinformatics/btu531>
- Leonard P.J. 2011. *Aronia mitschurinii: solving a horticultural enigma*. MA thesis. Paper 183. University of Connecticut.
- Leonard P.J., Brand M.H., Connolly B.A. & Obae S.G. 2013. Investigation of the origin of *Aronia mitschurinii* using amplified fragment length polymorphism analysis. *HortScience* 48: 520–524. <https://doi.org/10.21273/HORTSCI.48.5.520>
- Li Q.Y., Guo W., Liao W.B., Macklin J.A. & Li J.H. 2012. Generic limits of Pyrinae: insights from nuclear ribosomal DNA sequences. *Botanical Studies* 53: 151–164.
- Li M., Ohi-Toma T., Gao Y.D., Xu B., Zhu Z.M., Ju W.B. & Gao X.F. 2017. Molecular phylogenetics and historical biogeography of *Sorbus* sensu stricto (Rosaceae). *Molecular Phylogenetics and Evolution* 111: 76–86. <https://doi.org/10.1016/j.ympev.2017.03.018>

- Linnaeus C. 1753. *Species Plantarum* 1: 477. Holmiae.
- Lo E.Y. & Donoghue M.J. 2012. Expanded phylogenetic and dating analyses of the apples and their relatives (Pyreae, Rosaceae). *Molecular Phylogenetics and Evolution* 63: 230–243. <https://doi.org/10.1016/j.ympev.2011.10.005>
- Lo E.Y., Stefanović S. & Dickinson T.A. 2007. Molecular reappraisal of relationships between *Crataegus* and *Mespilus* (Rosaceae, Pyreae) – two genera or one? *Systematic Botany* 32: 596–616. <https://doi.org/10.1600/036364407782250562>
- Maaten L. van der & Hinton G. 2008. Visualizing data using t-SNE. *Journal of Machine Learning Research* 9: 2579–2605.
- Medikus F.K. 1789. *Philosophische Botanik mit kritischen Bemerkungen*: 140. Mannheim.
- Oh S.H. & Potter D. 2003. Phylogenetic utility of the second intron of LEAFY in *Neillia* and *Stephanandra* (Rosaceae) and implications for the origin of *Stephanandra*. *Molecular Phylogenetics and Evolution* 29: 203–215. [https://doi.org/10.1016/S1055-7903\(03\)00093-9](https://doi.org/10.1016/S1055-7903(03)00093-9)
- Paradis E., Claude J. & Strimmer K. 2004. APE: analyses of phylogenetics and evolution in R language. *Bioinformatics* 20: 289–290. <https://doi.org/10.1093/bioinformatics/btg412>
- Pelser P.B., Gravendeel B. & Meijden R van der. 2003. Phylogeny reconstruction in the gap between too little and too much divergence: the closest relatives of *Senecio jacobaea* (Asteraceae) according to DNA sequences and AFLPs. *Molecular Phylogenetics and Evolution* 29: 613–628. [https://doi.org/10.1016/S1055-7903\(03\)00139-8](https://doi.org/10.1016/S1055-7903(03)00139-8)
- Persson Hovmalm H.A., Jeppsson N., Bartish I.V. & Nybom H. 2004. RAPD analysis of diploid and tetraploid populations of *Aronia* points to different reproductive strategies within the genus. *Hereditas* 141: 301–312. <https://doi.org/10.1111/j.1601-5223.2004.01772.x>
- R Core Team. 2018. R: A language and environment for statistical computing. R Foundation for Statistical Computing, Vienna, Austria. Available from <http://www.R-project.org/> [accessed 1 Jan. 2018].
- Robertson K.R., Phipps J.B., Rohrer J.R. & Smith P.G. 1991. A synopsis of genera in Maloideae (Rosaceae). *Systematic Botany* 16: 376–394. <https://doi.org/10.2307/2419287>
- Rohlf F.J. 2010. tpsDig. Version 2.16. State University at Stony Brook, N.Y. Available from <http://life.bio.sunysb.edu/morph> [accessed 20 Feb. 2014].
- Schliep K.P. 2011. phangorn: phylogenetic analysis in R. *Bioinformatics* 27: 592–593. <https://doi.org/10.1093/bioinformatics/btq706>
- Schneider C.K. 1906. Species varietatesque Pomacearum novae. *Repertorium Specierum Novarum Regni Vegetabilis* 3: 134.
- Scrucca L., Fop M., Murphy T.B. & Raftery A.E. 2016. mclust 5: clustering, classification and density estimation using Gaussian finite mixture models. *The R Journal* 8: 205–233.
- Sennikov A.N. & Phipps J.B. 2013. Atlas Florae Europaeae notes, 19–22. Nomenclatural changes and taxonomic adjustments in some native and introduced species of Malinae (Rosaceae) in Europe. *Willdenowia* 43: 33–44. <https://doi.org/10.3372/wi.43.43104>
- Shipunov A. & Bateman R. 2005. Geometric morphometrics as a tool for understanding *Dactylorhiza* (Orchidaceae) diversity in European Russia. *Biological Journal of the Linnean Society* 85: 1–12. <https://doi.org/10.1111/j.1095-8312.2005.00468.x>
- Shipunov A., Fay M.F., Pillon Y., Bateman R.M. & Chase M.W. 2004. *Dactylorhiza* (Orchidaceae) in European Russia: combined molecular and morphological analysis. *American Journal of Botany* 91: 1419–1427. <https://doi.org/10.3732/ajb.91.9.1419>

- Skvortsov A.K. & Majtulina J.K. 1982. On the differences of cultivated black-fruited *Aronia* from its wild ancestors. *Bulletin of Main Botanical Garden* 126: 35–40. [In Russian.]
- Skvortsov A.K., Majtulina J.K. & Gorbunov J.N. 1983. On the place, time and putative way of the cultivated black-fruited *Aronia* origin. *Bulletin of the Moscow Society of Naturalists. Biological Series* 88: 88–96. [In Russian.]
- Smolik M., Ochmian I. & Smolik B. 2011. RAPD and ISSR methods used for fingerprinting selected, closely related cultivars of *Aronia melanocarpa*. *Notulae Botanicae Horti Agrobotanici Cluj-Napoca* 39: 276–284. <https://doi.org/10.15835/nbha3926268>
- Sun J., Shi S., Li J., Yu J., Wang L., Yang X., Guo L. & Zhou S. 2018. Phylogeny of Maleae (Rosaceae) based on multiple chloroplast regions: implications to genera circumscription. *BioMed Research International* 2018: 7627191. <https://doi.org/10.1155/2018/7627191>
- Taheri R., Connolly B.A., Brand M.H. & Bolling B.W. 2013. Underutilized chokeberry (*Aronia melanocarpa*, *Aronia arbutifolia*, *Aronia prunifolia*) accessions are rich sources of anthocyanins, flavonoids, hydroxycinnamic acids, and proanthocyanidins. *Journal of Agricultural and Food Chemistry* 61: 8581–8588. <https://doi.org/10.1021/jf402449q>
- Thompson J.D., Gibson T.J., Plewniak F., Jeanmougin F. & Higgins D.G. 1997. The CLUSTAL_X windows interface: flexible strategies for multiple sequence alignment aided by quality analysis tools. *Nucleic Acids Research* 25 (24): 4876–4882. <https://doi.org/10.1093/nar/25.24.4876>
- Vinogradova Y.K. & Kuklina A.G. 2014. *Aronia mitschurinii: from Origination to Naturalization*. GEOS, Moscow. [In Russian.]
- Volkova P., Kasatskaya S., Boiko A. & Shipunov A. 2011. Stability of leaf form and size during specimen preparation of herbarium specimens. *Feddes Repertorium* 121: 219–225. <https://doi.org/10.1002/fedr.201000021>
- Zarrei M., Stefanovic S. & Dickinson T.A. 2014. Reticulate evolution in North American black-fruited hawthorns (*Crataegus* section *Douglasia*; Rosaceae): evidence from nuclear ITS2 and plastid sequences. *Annals of Botany* 114: 253–269. <https://doi.org/10.1093/aob/mcu116>
- Zelditch M.L., Swiderski D.L. & Sheets H.D. 2012. *Geometric morphometrics for biologists: a primer*. Academic Press.

Manuscript received: 26 August 2018

Manuscript accepted: 22 August 2019

Published on: 23 October 2019

Topic editor: Frederik Leliaert

Desk editor: Connie Baak

Printed versions of all papers are also deposited in the libraries of the institutes that are members of the EJT consortium: Muséum national d'Histoire naturelle, Paris, France; Meise Botanic Garden, Belgium; Royal Museum for Central Africa, Tervuren, Belgium; Royal Belgian Institute of Natural Sciences, Brussels, Belgium; Natural History Museum of Denmark, Copenhagen, Denmark; Naturalis Biodiversity Center, Leiden, the Netherlands; Museo Nacional de Ciencias Naturales-CSIC, Madrid, Spain; Real Jardín Botánico de Madrid CSIC, Spain; Zoological Research Museum Alexander Koenig, Bonn, Germany; National Museum, Prague, Czech Republic.