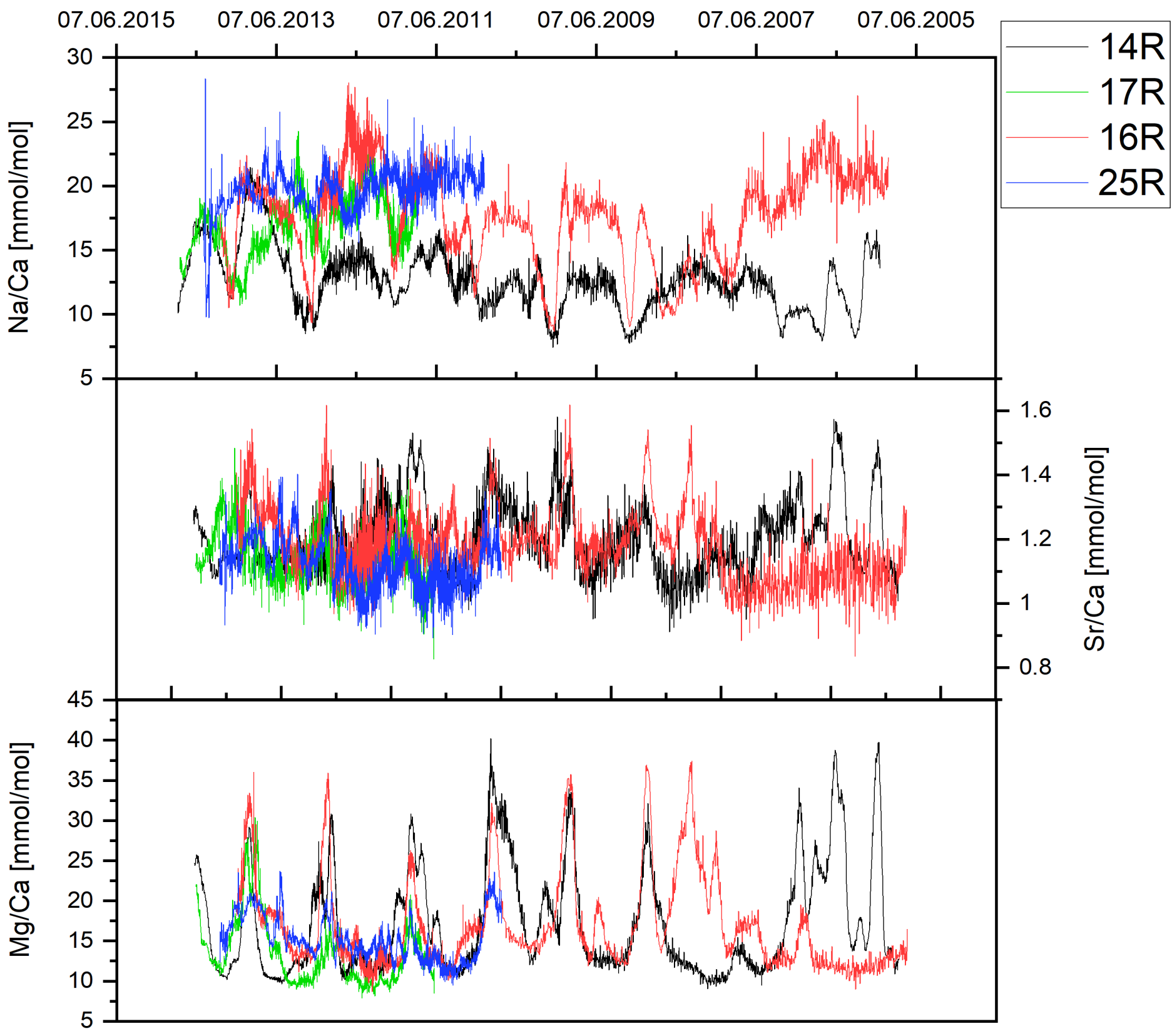


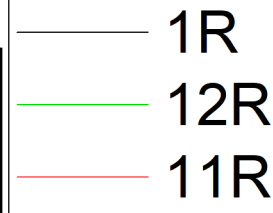
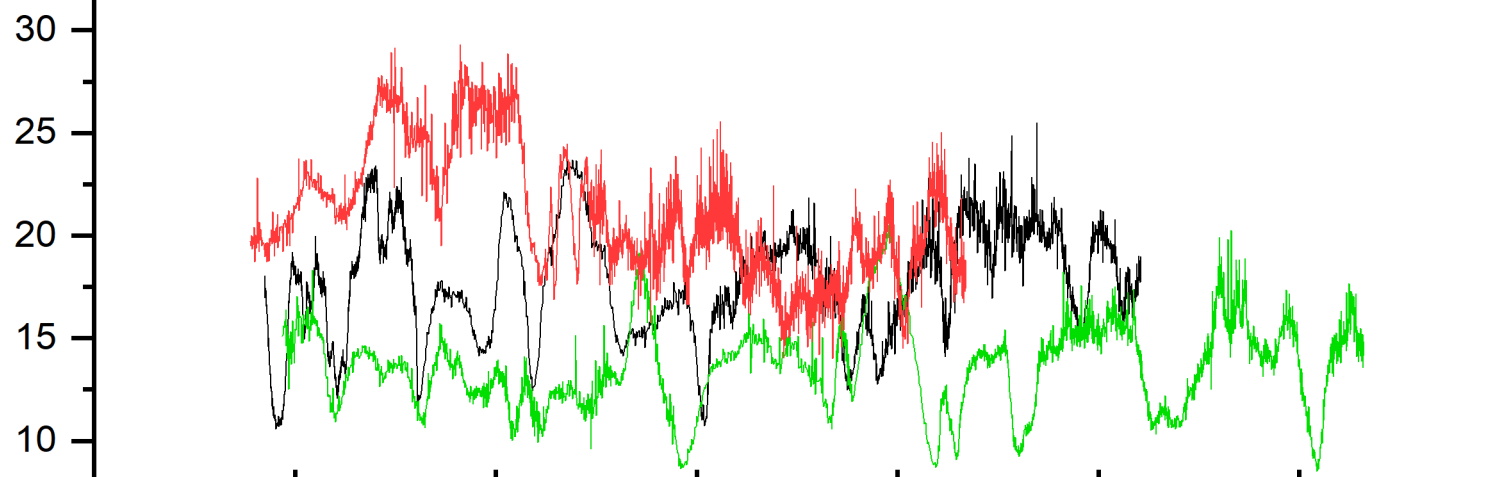
Samples from Sula reef



Samples from Leksa reef

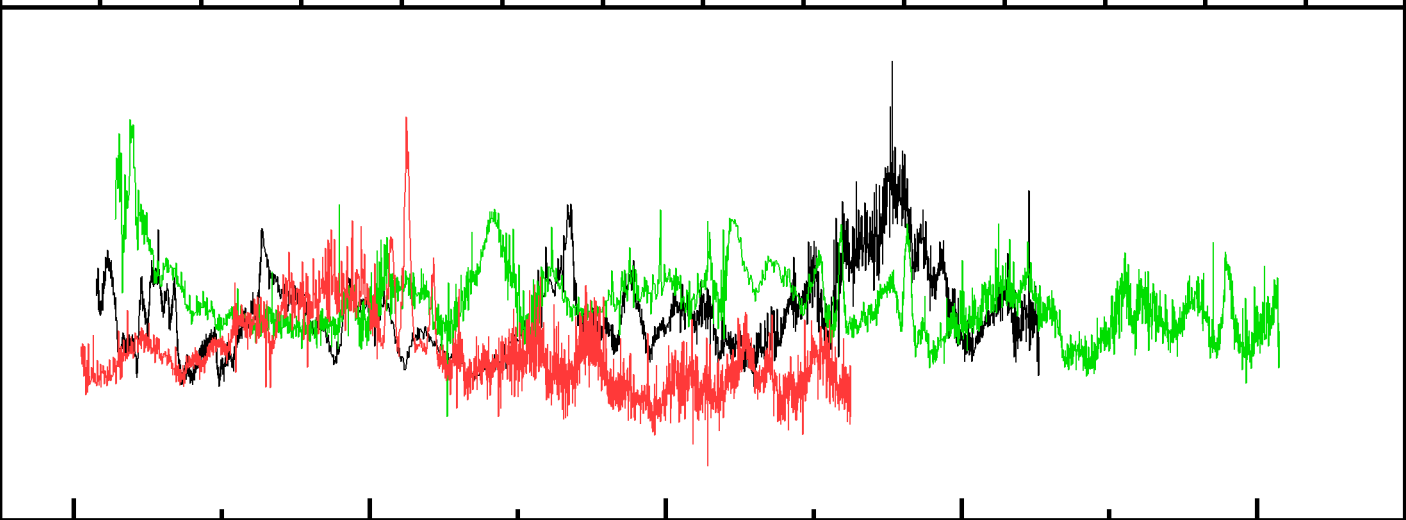
06.06.2016 06.06.2014 06.06.2012 06.06.2010 06.06.2008 06.06.2006 06.06.2004

Na/Ca [mmol/mol]



Sr/Ca [mmol/mol]

2
1.8
1.6
1.4
1.2
1
0.8
0.6



Mg/Ca [mmol/mol]

