

Construction of A - B hetero-layer intermetallic crystals: case studies of the 1144-phase TM-phosphides $AB(TM)_4P_4$ (TM=Fe, Ru, Co, Ni)

B. Q. Song,^{1,2} Mingyu Xu,^{1,2} Vladislav Borisov,^{3,4} Olena Palasyuk,¹
C. Z. Wang,^{1,2} Roser Valenti,³ Paul C. Canfield,^{1,2} and K. M. Ho^{1,2}

¹*Ames Laboratory, Iowa State University, Ames, Iowa 50011, USA*

²*Department of Physics and Astronomy, Iowa State University, Ames, Iowa 50011, USA*

³*Institute of Theoretical Physics, Goethe University Frankfurt am Main, D-60438 Frankfurt am Main, Germany*

⁴*Department of Physics and Astronomy, Uppsala University, 752 36 Uppsala, Sweden*

(Dated: May 29, 2022)

The discovery of the 1144-phase, e.g. $\text{CaKFe}_4\text{As}_4$, creates opportunities to build novel intermetallics with alternative stacking of two parent compounds. Here we formalize the idea by defining a class of bulk crystalline solids with A - B stacking (including 1144-phases and beyond), which is a generalization of hetero-structures from few-layer or thin-film semi-conductors to bulk intermetallics. Theoretically, four families of phosphides $AB(TM)_4P_4$ (TM=Fe, Ru, Co, Ni) are investigated by first-principles calculations, wherein configurational, vibrational and electronic degrees of freedom are considered. It predicts a variety of stable 1144-phases (especially Ru- and Fe-phosphides). Stability rules are found and structural/electronic properties are discussed. Experimentally, we synthesize high-purity CaKRu_4P_4 as a proof of principle example. The synthetic method is simple and easily applied. Moreover, it alludes to a strategy to explore complex multi-component compounds, facilitated by a phase diagram coordinated by collective descriptors.

1. INTRODUCTION

Breakthroughs in synthesis could evoke new material concepts. For example, graphene together with a variety of single-layer structures have substantiated and popularized the 2-D materials [1]. On the other hand, varying the attributes affiliated with existing conceptions could help discover new types of compounds. For example, the finding of high-entropy alloys (HEA) [2, 3] was motivated by the idea of tuning the number of alloy constituents and concentrations, which are two basic attributes based on present concepts of alloys. Such synthesis-conception duality is essential for material development, and the dual aspects are mutually inspiring. The recent discovery and study of $AeAFe_4As_4$ (A = alkali, Ae = alkaline earth) 1144-phase compounds [4–11] is such an example. Its synthesis implied creating quaternary compounds by judicious combinations of related ternary materials AFe_2As_2 and $AeFe_2As_2$; on the other hand, choosing and varying the cation attributes can yield broader intermetallic compounds, as conceptualized in this work.

The 1144-phase (Fig. 1(a)) can be regarded as alternating cation layers in the 122-phase being replaced by hetero-cations [4]. Stoichiometrically, it is equivalent to 50% doping of $AeFe_2As_2$ by A (or A by Ae). However, this view obscures that Fe-As layers have been significantly altered due to cation polarization in 1144-phases, which sets it apart from 122-phases [12–14]. Compared with 122-phases, 1144-phases feature distinct parameters (e.g., bonding angles, pnictogen heights) above and below the transition metal (TM) layer (Fig. 1(b)). Consequently, the n -glide plane across the Fe-layer disappears, and the space group is reduced from $I4/mmm$ in 122-

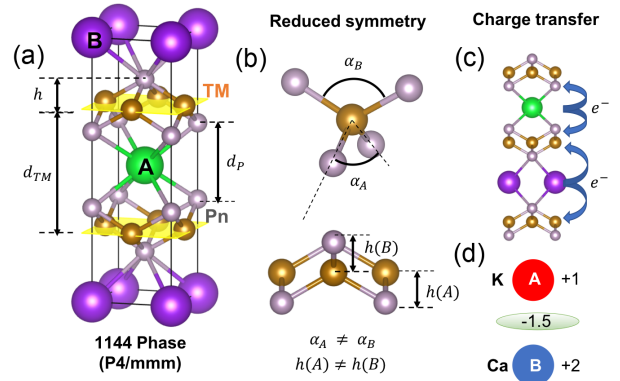


FIG. 1. (color online): (a) The crystal structure of the 1144-phase. If A , B sites are occupied by the same cations, it becomes the 122-phase (b) Structure parameters with broken glide symmetry. (c) Charge transfer from cation-layers to TM-layers. (d) Schematic charge distribution of KCaRu_4P_4 . The layers of K^+ and Ca^{2+} take positive charges; each TM-layer takes $-1.5e$ per unit cell. Pn stands for pnictogen and TM stands for transition metals

phases, to $P4/mmm$ in 1144-phases [8]. This fact might be relevant to the emergence of hedgehog spin textures [7], low-dimensional superconductivity (SC) [11], FM-SC coexistence [15], suppressed T_c with pressure [16], and disputed nematic behavior [7, 14, 17, 18]. Besides, the 1144 crystal surface has been suggested to be a platform for testing the Majorana zero modes [19, 20].

The 1144-phase is a representative of “ordered stacking” [21], and poses an intriguing conjecture that such compounds widely exist subject to certain rules about building blocks: cation- and TM-layers. Alloys mix elementary atoms into random solid solution (SS), while

1144-phases have layers as basic units and pack them into an ordered pattern. Since interesting phenomena (e.g., SC [7, 9, 11], magnetism [15]) arise from d -orbitals in TM-layers, the most revealing view is that the TM-layer resides in between two hetero-cation layers (Fig. 1(a)). It is reminiscent of 2-D materials being sandwiched by the substrate and vacuum. Varying species of hetero-cations serves as attributes to adjust chemical potentials and symmetry, just like choosing an underneath substrate and on-top dopants as the counterpart tuning for graphene [1, 22]. The pnictogen height h (Fig. 1(a)) exhibits considerable asymmetry on different sides with 5%-10% changes compared with 122-phases. The manipulation could be further enriched by the diverse candidates for substitution: Ru-Si [23], VO₂[24] for TM-layers; and A, Ae, rare earth (RE) for cation layers [25].

The paper is organized as follows. Sec. 2 introduces a general class of intermetallics inspired by the 1144-phase. In Sec. 3, four families of phosphides $AB(TM)_4P_4$ (TM=Fe, Ru, Co, Ni) are chosen for a case study. We discuss their formation conditions at zero and finite temperatures, accounting for the configurational, vibrational, and electronic degrees of freedom. A number of 1144-compounds (especially Ru- and Fe-based phosphides) are predicted to be stable. Other questions are also examined regarding the stability mechanism, electronic structures, and latent features of the 1144 crystals. Sec. 4 presents our work of synthesizing high-purity KCaRu₄P₄. Its structure is determined as a proof of principle example. In Sec. 5, we survey that 1144-like crystals are broadly existent, tuning-friendly, and of versatile physical properties, such as interplay of magnetism and superconductivity [26, 27], volume-collapsed phases [28–30], or heavy fermion behaviors [23]. It also presents an avenue for designing complex many-constituent intermetallic compounds beyond ternary alloys.

2. DEFINITION OF HETERO-LAYER INTERMETALLIC CRYSTALS

The 1144-phase raises many questions. Why an ordered phase emerges at 50% concentration, where configuration entropy gets to maximum? This is utterly opposite to high entropy alloys [3], which target the equal-concentration for a maximum tendency to randomness. Whether such ordered compounds exist beyond Fe-arsenides, or beyond 1144-phases? If so, what are their common features? Which minor distinctions can be ignored? Is there a general descriptor for them?

Working on these questions, we naturally obtain a broader class of A - B hetero-layer intermetallic crystals defined below. For short, we call it hetero-crystal: “hetero” refers to A - B stacking, “crystal” reminds that it is bulk rather than low-dimension or thin film. Note that hetero-crystal is merely an abbreviation in this context.

(i) They are bulk crystals (i.e., stacking units are atomic thick and periodic along the z -axis), manufactured by liquid growth [6] or solid state reaction [4], in contrast to low-dimensional or thin-film hetero-structures (like super-lattice [31] or tunneling junctions [32]), which are usually prepared with vapor deposition.

(ii) They consist of two sub-systems: cation layers (usually metal elements) and skeleton layers (e.g., TM-pnictogen or TM-chalcogen layers). Note that “layer” is indispensable, i.e., it requires bonding along the z -axis is weaker than that in the x - y plane. Thus, structures without layer divisions, such as pyrochlores and fluorite, are not within the present definition, although it might exhibit cation ordering [33, 34]. The layer construction significantly affect physical properties. For example, the two sub-systems differ in electronegativity and charge transfer between them (Fig. 1(c)(d)) leads to an ionic type of inter-layer bonding. The TM-layer motif (usually tetrahedron) causes particular hybridizations of d -orbitals that generate partially filled bands, promoting metallic properties and itinerant magnetism [26]. These features set it apart from hetero-structures in the context of semiconductors [32].

(iii) They show an A - B stacking of alternating cation layers. As such, the concentration of A (or B) is fixed to 50% and disorder in cation layers is much suppressed. More importantly, the A - B stacking creates asymmetric up-and-down environments and distorts the TM-layer, which could be Fe-Pn, NiO₂ [35, 36], VO₂, and Mo _{N} O _{$3N-1$} ($N=1, 2, 3...$) [24]. The structural change associated with the symmetry breaking is huge compared to that by applying pressure. For instance, our calculation shows that the asymmetry for pnictogen height h (Fig. 1(b)) is up to 5%~10%. Thus it seems plausible that HC will behave distinctively from SS phases with identical stoichiometry.

(iv) They are formed by combining two *stable* parent phases. For example, the 1144-phase can be synthesized by mixing two 122-compounds, as done in this work. In general, the parent phase refers to the phase that has the common skeleton layer as hetero-crystals, but has mono-cations. It requires that the involved parent phases are stable (or meta-stable) [25]. (iv) suggests that seeking HC should begin with looking for stable parent phases. Hundreds of 122-phases have been synthesized [37], and the reservoir of parent compounds facilitate synthesis.

Besides the four definitions above, it is worth mentioning that although the 1144-phase is quaternary, it is effectively binary, as the main variables are the cations A and B . When the parent phases are mixed, entropy favors random mixing of A and B , forming a uniform SS phase; whereas if an ordered phase occurs, it must have been favored by enthalpy. Thus, the 1144-phase’s emergence is closely linked to enthalpy battling with configuration entropy.

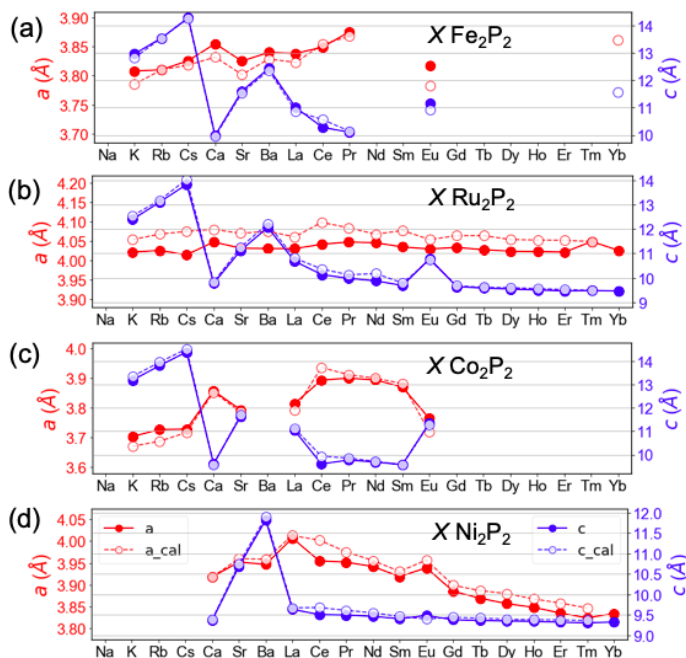


FIG. 2. (Color online): Lattice-parameters a (red) and c (blue) of the tetragonal unit of 122-phases. Filled and open points represent experimental and theoretical values. Missing points are unstable or not reported yet. Experimental results are cited from Springer Materials data base.

3. THEORETICAL RESULTS

3A. Stability of 1144-phase

The 1144-phase is presently limited to Fe-arsenides with cations from the alkali metal group (IA) or alkaline earth group (IIA) [25], and it is highly desirable to extend the chemical scope. Empirical rules for stable 1144-phases have been recognized: a large cation-radius mismatch ΔR seems a favorable factor; besides, the lattice mismatch Δa is also relevant [4, 6]. The dependence of the two descriptors ΔR and Δa can be rationalized with the enthalpy change due to elastic deformations [8]. The mechanism is generic, so it applies to Ru-P 1144 systems and other TM-pnictides. On the other hand, descriptors ΔR and Δa fail to encode charge information (i.e., valence states exhibited by the cation) [21], thus are incapable of treating situations with valence variation, e.g. when trivalent cations rare earth RE^{3+} are introduced. This implies additional descriptors are needed.

We start the search from parent compounds of 122-phase pnictides, which are broadly existing for different valences ($X = \text{Ai}^+$, Ae^{2+} , or RE^{3+}), an ideal ground for shedding light on the charge effect. Also, the iso-valence substitution $\text{P} \rightarrow \text{As}$ is likely to yield stable phases. In terms of properties, Ru might introduce strong spin-orbital coupling; radius of P is smaller, thus it is easier

to realize the half-collapsed phase [28–30]. The lattice parameters (experimental and calculated) are listed in Fig. 2(a)-(d). Notably, 122-phases are unstable with certain cations. The calculation is based on density functional theory (DFT) [38] with Perdew Burke Ernzerhof (PBE) exchange-correlation functional, implemented by the Vienna ab initio simulation package (VASP). Both the unit cell and internal coordinates are fully relaxed. Calculation parameters are shown in the supplementary information (SI) [39]. The results of the calculated lattice parameters are close to the experimental values for most of systems with differences $\leq 1\%$. Except for Ce-contained 122 phases where lattice parameters are consistently overestimated, probably due to inherent issues of pseudo-potentials in treating variant valences of Ce.

The 1144-phase is achieved by mixing two 122-phases with common skeleton layers (choose from the four groups in Fig. 2). The reaction merely involves redistribution of cations, either ordered or random. Thus, the question becomes the competition between 1144-phase and 122-solution-phase (122(s)-phase) [4, 8]. In general, the simplifying to two-phase competition is made possible by condition (iv) defined in Sec. 2, i.e., the existence of stable parent phases. This is indispensable, because having stable parent phases provides starting points and allows the reaction to be studied in a simpler landscape.

At zero temperature, phase stability is dictated by the formation enthalpy $\Delta H = H_{122(s)} - H_{1144}$. The enthalpy of the ordered phase can be estimated from super-cell calculations within DFT. For the solution phase, however, calculation of enthalpy involves random configurations and we adopt the ideal solution approximation.

$$H_{122(s)} = x \cdot H_{122}^A + (1-x) \cdot H_{122}^B, \quad (1)$$

where x is the concentration of cation A, and $x=1/2$ in this case. The stable 1144-phases ($\Delta H > 5$ meV/atom) are summarized in Fig. 3(a) (complete list seen in Sec. 2 of SI [39]) where ΔH is plotted against two descriptors:

$$\Delta a = -|a_{122}^A - a_{122}^B|, \quad (2)$$

$$\Delta c = |c_{122}^A - c_{122}^B| \quad (3)$$

with a and c denoting the lattice parameters of the tetragonal unit cell of parent 122-phases. A number of 1144-phases are found stable, especially for Fe- and Ru-phosphides. The stable 1144-phases concentrate in a region of small $|\Delta a|$ and large $|\Delta c|$ (upper right corner of Fig. 3(a)), a tendency aligned with earlier findings [4, 8]. However, a closer inspection shows some discrepancies. For example, the two red hexagons (black arrow) deep in the upper-right corner ($\text{CsErRu}_4\text{P}_4$ and $\text{CsHoRu}_4\text{P}_4$) are not the most stable albeit they best satisfy the criteria. This implies additional descriptors, as discovered shortly.

At finite temperature, the phase stability is determined by the free energy:

$$\begin{aligned} \Delta G &= G_{122(s)} - G_{1144} \\ &= \Delta H + \Delta E_0 - \Delta S_{conf}T - \Delta S_{vib}T - \Delta S_eT, \end{aligned} \quad (4)$$

where E_0 is the zero-point vibration energy. S_{conf} , S_{vib} and S_e are configurational, vibrational and electronic entropies, respectively. The configuration entropy S_{conf} for the 1144-phase is zero. The S_{conf} of the 122(s)-phase (per unit cell) is estimated by [40]

$$S_{conf} = k_B(x \log x + (1-x) \log(1-x)), \quad (5)$$

where x is defined in Eq. 1. In this case, S_{conf} is a constant 0.012 meV/(atom K). The electron entropy is estimated by

$$S_e = -k_B \int D(E) (f \cdot \log f + (1-f) \log(1-f)) dE, \quad (6)$$

where f is the Fermi distribution function and $D(E)$ is the density of states, which are obtained from DFT calculations. Calculations of zero-point energy and vibration entropy S_{vib} are performed by the code *phonopy* within the harmonic approximation [41]. For the 122(s)-phase, S_{vib} and S_e are estimated with the average of two 122-phases, similar to Eq. 1.

In Fig. 3(b) we plot ΔG as a function of temperature for three typical stable systems. At high temperature, the entropy will eventually bring the ordered 1144-phase into the 122(s)-phase. We define T^* as the temperature where $\Delta G=0$ and, below which, the 1144-phase is stable. Comparing the dashed (only includes S_{conf}) and solid curves in Fig. 3(b), we find that including S_{vib} and S_e modifies minimally the free energy, and thus conclude that the S_{conf} is the main contribution, which is consistent with previous findings [8]. As such, $\Delta H/S_{conf}$ may give a rough estimate of T^* . In Sec. 3 of [39] we provide ΔG calculations for more systems.

3B. General rules of phase stability

The stability of 1144-phases obeys certain rules. As shown previously, descriptors Δc given by Eq. 3 (or atomic radius mismatch ΔR), and Δa given by Eq. 2, proved useful [4, 8]. They were first exemplified in Fe-arsenide 1144-systems and understood with an elastic model [8]. Next we will find a descriptor associated with the charge balance between cation layers and pnictogen (Pn) layers, which will subtly affect the 1144/122(s) stability.

The formation enthalpies ΔH of $ABFe_4As_4$ are plotted in Fig. 4(a), which shows that the stability gets enhanced from the lower-left to the upper-right in the graph. Thus, $ABFe_4As_4$ endorse the established rule [4, 8] that the

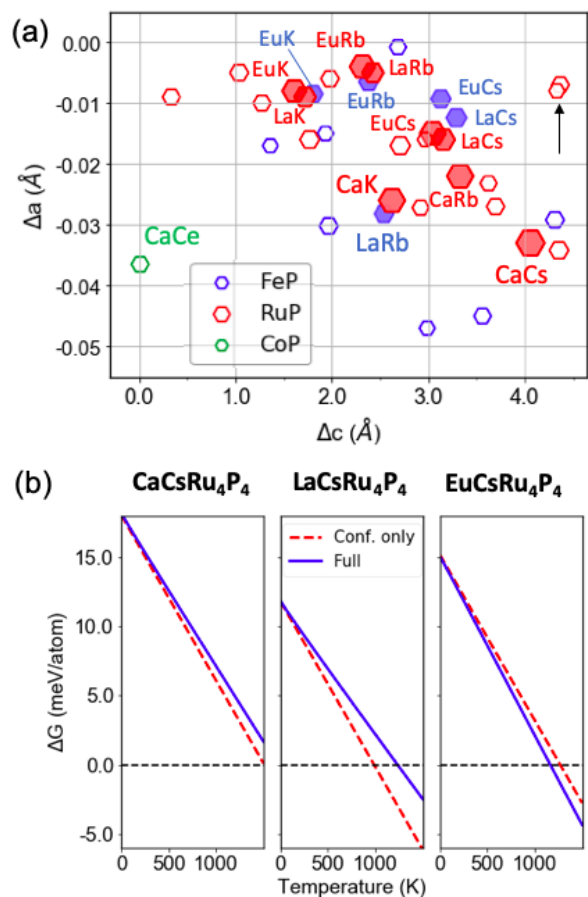


FIG. 3. (Color online): (a) ΔH (proportional to the hexagon size) plotted against two descriptors: $\Delta a = -|a_{122}^A - a_{122}^B|$, $\Delta c = |c_{122}^A - c_{122}^B|$, where a and c are lattice parameters of the two parent 122-phases $A(TM)_2P_2$ and $B(TM)_2P_2$. The most promising systems are highlighted with solid hexagons and the corresponding cations are denoted. (b) Temperature dependence of free energy $\Delta G = G_{122(s)} - G_{1144}$. ($\Delta G > 0$ 1144-phase is stable.) The dashed line only includes S_{conf} . The blue line further includes S_{vib} and S_e .

1144-phase is stabilized with large $|\Delta c|$ and small $|\Delta a|$. However, the rule seems inadequate for Ru-phosphides (Fig. 4(b)), as the stable and unstable systems remain unseparated. To elucidate the situation, we divide these data into subgroups by cation valence states, e.g., I + II (Fig. 4(c)) and II + III (Fig. 4(d)); then the rule manifests itself. Basically, the cation pair affects the stability: group I+II form a stable 1144-phase and II+III do not. Such distinction, obviously, relies on charge balance between the cation layer and TM-layer. In fact, charge balance is a generic factor, which also affects the 122-phases (Fig. 2(a)-(d)). For instance, mono-valence cations do not favor the 122-phase ANi_2P_2 (Fig. 2(d)). On the other hand, tri-valence cations never stabilize AFe_2As_2 [25]. Note that the favorable charge balance for Ru-phosphides is alkali metal (AI) + alkaline earth (AII) (or AI+Eu), i.e., the effective valence state 1.5+, which is the same

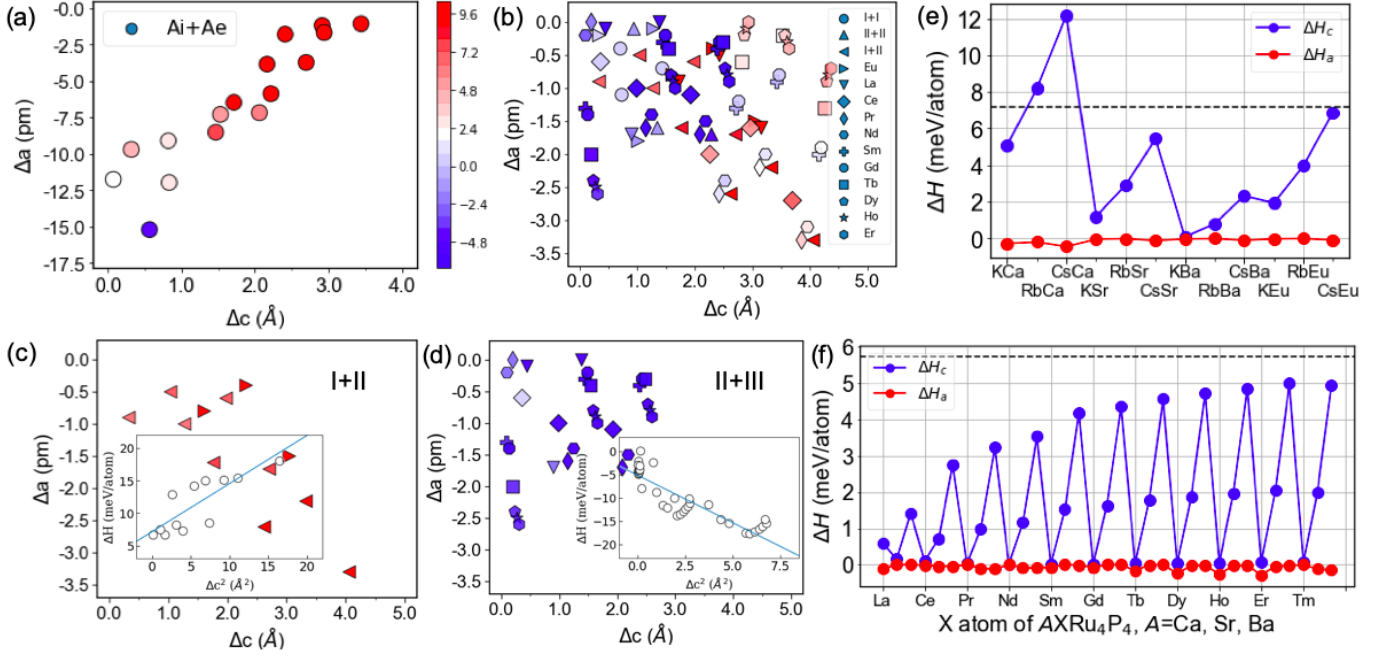


FIG. 4. (Color online): The formation enthalpy ΔH of (a) $ABFe_4As_4$ with $A B$ being alkali metal (Ai) and Alkaline earth (Ae), (b) of $ABRu_4P_4$. Each spot represents a particular pair of A - B . Color scales represent ΔH , and red means stable 1144-phase (unit: meV/atom). I+II means alkali metal (AI) plus alkaline earth (AII); II+II means AII+AII; I+II means AI+AII. Eu, La, etc., mean the specific rare earth (RE) combined with another AI or AII. The ΔH of subgroups (c) I+II and (d) II+III. Other subgroups are shown in [39]. The shapes of points are consistent with the legend in (b). (e)(f) ΔH contribution from ΔH_a , ΔH_c and ΔH_0 . The dashed line represents the magnitude $|\Delta H_0|$. Note that ΔH_0 is positive for (e), but negative for (f).

as in the Fe-arsenide [8, 25] systems, consistent with the anticipation of iso-valence substitution.

At the same time, the size effect still plays a role, as ΔH manifests a linear correlation with $(\Delta c)^2$ in each subgroup (insets of Fig. 4(c) and (d)). It suggests that the charge effect cooperates with the size effect, for which we formulate the formation enthalpy ΔH as two additive parts regarding the size and charge effects,

$$\Delta H = \Delta H_{size} + \Delta H_{charge} \quad (7)$$

The size part essentially accounts for the elastic energy and could be approximated as [8]

$$\Delta H_{size} = -\frac{1}{4}k_a(\Delta a)^2 + \frac{1}{2}k_c(\Delta c)^2 \quad (8)$$

The term ΔH_{charge} is a function of charge distribution $\rho(r)$, and the exact form could be exceedingly complex. However, it can be simplified in the 1144 scenario by noticing that there are limited choices of $\rho(r)$. Neglecting the minor distinctions due to the lattice constants, the charge distributions of, for instance, $CaKRu_4P_4$ and $SrRbRu_4P_4$ should be similar, both of which can be represented by the sketch of Fig. 1(c). Such resemblance helps classify 1144-phosphides into 13 groups, by the criterion that the in-group compounds should be composed of the same TM and cation valence (Sec. 5 of SI [39]). For example, $BaRbFe_4P_4$ belongs to the same

group as $CaKFe_4P_4$; however, $BaRbRu_4P_4$ (for distinct TM) and $LaKFe_4P_4$ (distinct cation valence) do not. In each group, the $\rho(r)$ are considered identical. The limited options for $\rho(r)$ reduce the functional $\Delta H_{charge}[\rho(r)]$ to a function that takes 13 distinct values (Table I). Within each group, we assume the ΔH_{charge} being a constant ΔH_0 (positive means favorable for 1144). In all, there are three parameters pertaining to each group: k_a , k_c characterizing size effects in a - b plane and c -axis, respectively; and ΔH_0 characterizing the charge balance effects. These parameters can be evaluated by fitting ΔH obtained from first-principle calculations with Eq. 7 and Eq. 8. The results are tabulated in Table I.

All the groups are yielding $|k_c| \ll |k_a|$ due to the common feature of 1144-phases: stronger in-plane bonding and weaker inter-layer bonding. That is understandable because covalent bonding (intra-layer) is usually stronger than ionic interaction (inter-layer). Besides, the signs of k_a , k_c shed light on stability, because negative k_a (or k_c) corresponds to a unstable point ($\partial^2(\Delta H_{size}) < 0$), which is seen II+II, II+III for Fe and Ru. On the other hand, k_a , k_c are both positive for II+III of Ni, suggesting this is the favorable combination. Knowing k_a and k_c , one can straightforwardly evaluate the contributions by the a - b plane $\Delta H_a = -\frac{1}{4}k_a(\Delta a)^2$, and the z -axis $\Delta H_c = \frac{1}{2}k_c(\Delta c)^2$. Let us take Ru-phosphide based 1144 systems as an example. (Results for Fe-, Co-, and Ni-

TABLE I. Force constants k_a k_c and ΔH_{charge} for 13 different subgroups, obtained by fitting Eq. 7 and 8 to DFT results. Units for k and ΔH_0 are meV/(atom·Å²) and meV/atom.

Ru	k_a	k_c	ΔH_0	Co	k_a	k_c	ΔH_0
I+II	1675	1.48	7.17	I+II	2147	-0.69	-6.31
I+III	3395	-0.097	4.34	I+III	-1016	-1.68	-20.93
II+II	3816	-1.78	0.39	–			
II+III	-10206	-3.92	-5.74	II+III	-2632	-4.74	-1.81
Fe	k_a	k_c	ΔH_0	Ni	k_a	k_c	ΔH_0
I+II	4879	0.45	5.51	–			
I+III	4370	-0.24	6.34	–			
II+II	1869	-1.18	0.71	II+II	15177	-1.43	0.76
II+III	393	-2.44	-3.86	II+III	679	0.06	1.57

phosphides are found in SI [39].) Despite $|k_c| \ll |k_a|$, ΔH_c is substantially larger than ΔH_a (Fig. 4(e) and (f)) due to the fact that $\Delta a \ll \Delta c$. Thus, Δc serves as the primary descriptor for Ru-phosphides; this rationalizes why solely Δc well accounts for the change of ΔH of Ru-phosphides as showed by insets of Fig. 4(c) and (d). (Mind that the contribution of Δa is not always negligible, Sec. 4 of [39]).

As for the charge balance, the ΔH_0 of $ABRu_4P_4$ with I+II cations amounts to 7.17 meV/atom, comparable to the total $\Delta H \sim 10$ meV/atom of 1144-phases that have been experimentally realized [8]. For II + III, ΔH_0 is negative, battling against the positive ΔH_c . However $|\Delta H_0|$ is overwhelmingly larger than ΔH_c . Thus, the instability for II+III is due to unfavorable charge balance, rather than size effects. Note that the iso-valence Fe and Ru, which are fitted independently, yield proximate ΔH_0 in counterparts I+II, II+II, etc. This justifies our approximation of neglecting lattice-parameter effects on $\rho(r)$. In contrast, the iso-valence replacement of Fe by Ru will drastically alter k_a and k_c . The distinct responses for size effects (k_a , k_c) and charge effects (ΔH_0) to TM-replacement is one latent feature of the 1144 phase, for which it is beneficial to separate ΔH in the two terms of Eq. 7. In addition, for the case II + II, 1144-phases share the same charge distribution as 122-phases, for which ΔH is contributed solely by size effects and it yields $\Delta H_0 \sim 0$ as expected.

In short, the entangled contributions in ΔH are separated into size and charge effects, which are quantitatively evaluated. The significance hierarchy for Ru-phosphide is $\Delta H_0 \simeq \Delta H_c \gg \Delta H_a$ (Fig. 4(e) and (f)). For broader HC, however, ΔH_0 , ΔH_c , and ΔH_a are comparable, neither of which could be safely neglected. On that account, Δa Δc are incomplete, although they are useful descriptors to provide screening rules for stable 1144-phases. Complexity caused by charge effects still demands quantitative evaluation.

3C. Electronic structures

A fascinating observation about Fe-based SC is a phase diagram that involves various degrees of freedom and symmetries. [16, 26, 27] Understanding the interplay between spins, orbitals and lattices is at the heart of unraveling the origin of SC [42–44] and other intertwined orders [45, 46]. For instance, it is suggested that SC is mediated by magnetic fluctuations, which are intensified with a scenario of two-pocket Fermi surface (FS) [47, 48]. Thus, it is interesting to examine the FS and nesting vectors of 1144-phase Ru-phosphides and compare them with 122-phase or 1144-phase Fe-arsenide.

Generally speaking, the two-pocket features include: hole-pockets near Γ and electron-pockets near corner M in B.Z. (Fig. 5). The FS pocket is cylinder-like along k_z owing to the weakening band dispersion along the z -axis (Sec. 6 of SI [39]). That is, introducing heterocations impacts the FS similarly as reducing the dimension, although the periodicity along the z -axis remains intact. Thus, the FS could be characterized by $k_z=0$ plane (Fig. 5), and two-dimensional simplification for FS [49] seems plausible for the 1144-phase. On the other hand, the FS of $LaRu_2P_2$ strays away from the cylinder shape. This system exhibits isotropic superconductivity with $T_c \sim 4.1$ K, which could be understood with phonon mediation, evidenced by a consistent e-phonon coupling strength and large density of carriers at Fermi level. [50, 51].

In 1144-phases, d -electrons of Ru^{2+} occupy two spins equally, exhibiting zero magnetic moments, which suggests a ground state of diamagnetism or paramagnetism. In contrast, in Fe-arsenide, Fe has a fraction of effective magnetic moments [7, 12, 47]. For instance, $KCaFe_4As_4$ bears $\sim 0.2 \mu_B$, and forms long range spin vortex ordering after Ni- or Co-doping [7]. Note that even paramagnetic phases might exhibit AFM magnetic fluctuations [53], which is a relic of long-range ordering. Thus, it is unclear whether the absence of long-range order might be changed with doping or other tunings. To shed light on this, we estimate the non-interacting electronic susceptibility [54, 55] (Fig. 5(d)-(f)).

$$\chi(\mathbf{q}) = -\frac{1}{V} \sum_{\mathbf{k}, n, n'} \frac{f_n(\mathbf{k} + \mathbf{q}) - f_{n'}(\mathbf{k})}{\varepsilon_n - \varepsilon_{n'} + i\delta} \times \langle \mathbf{k}, n | e^{-i\mathbf{q} \cdot \mathbf{r}} | \mathbf{k} + \mathbf{q}, n' \rangle \langle \mathbf{k} + \mathbf{q}, n' | e^{i\mathbf{q} \cdot \mathbf{r}} | \mathbf{k}, n \rangle. \quad (9)$$

The f_n and ε_n are Fermi distribution and n th band energies. The V is volume and $|\mathbf{k}, n\rangle$ stands for Bloch states. In our calculation, the transition matrix $\langle \mathbf{k} + \mathbf{q}, n' | e^{i\mathbf{q} \cdot \mathbf{r}} | \mathbf{k}, n \rangle$ is taken to be 1. Thus, $\chi(\mathbf{q})$ is the non-interacting susceptibility under the constant phase approximation, and can shed light on the actual susceptibility.

The main nesting vector (black in Fig. 5(a)-(c)) varies with cation combinations. $CaCsRu_4P_4$ displays a com-

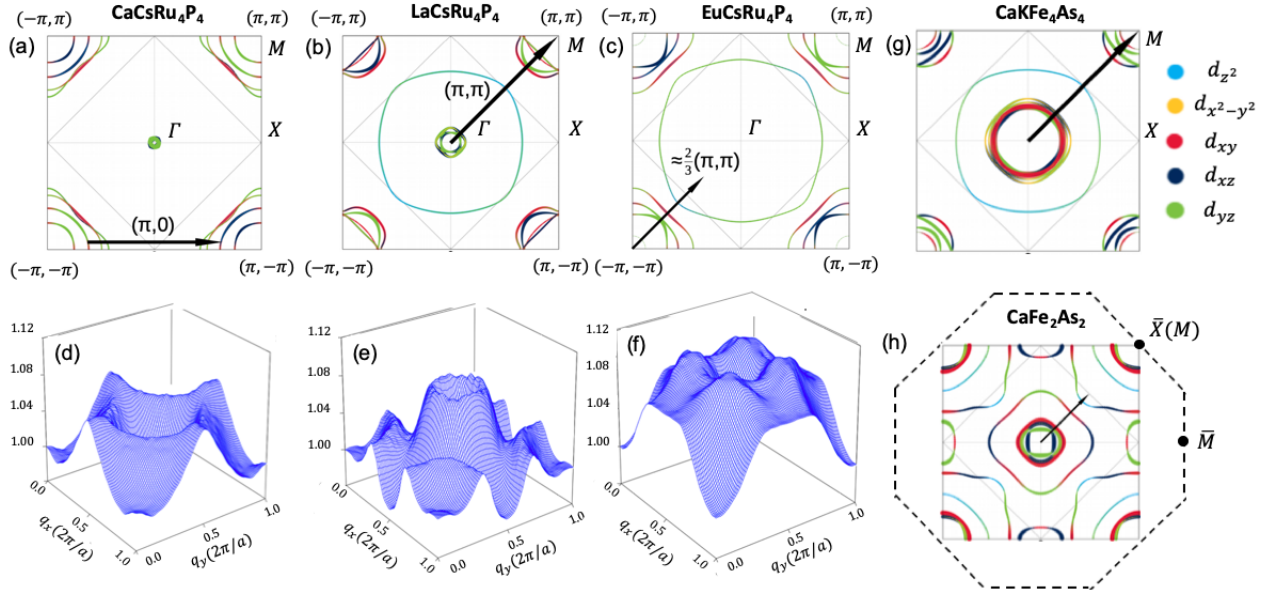


FIG. 5. (Color online) (a)-(c) FS in $k_z=0$ plane (unit for \mathbf{k} : $1/a$, orbitals are colored). The main nesting vector is denoted (the nesting vector is from origin to the highest peak of $\chi(\mathbf{q})$). (d)-(f) Non-interacting electronic susceptibility $\chi(\mathbf{q})$ (arbitrary units with $\chi(0)$ normalized to unity). (g)(f) FS of $\text{CaKFe}_4\text{As}_4$ and CaFe_2As_2 . The B.Z. is based on the tetragonal cell (Fig. 1(a)) which contains 10 atoms. Dashed lines represent an alternative B.Z. based on primitive cell of 122-phases (containing 5 atoms) projected to $k_z = 0$ plane (octagon), where \bar{X} is equivalent to M point for 1144-phases.

mensurate $(0, \pi)$ or $(\pi, 0)$, reflecting the nesting between pockets at two neighboring M . $\text{LaCsRu}_4\text{P}_4$ shows a FS similar to $\text{CaKFe}_4\text{As}_4$ (Fig. 5(g)), and exhibits the same vector (π, π) , due to the nesting between Γ and M . It has been found that below certain value of Pn-height the nesting vector $(0, \pi)$ will change to (π, π) [56]. In our case, the Pn-height (the minimum) for CsCa is 1.13 Å and CsLa is 1.11 Å, which endorses the tendency found in the scenario of 11-phase [56]. In $\text{EuCsRu}_4\text{P}_4$, the pocket at Γ is absent, but has an additional FS sheet, for which $\chi(q)$ reach cusps at incommensurate positions $\frac{2}{3}(\pi, \pi)$ (Fig. 5(f)). In comparison, 122-phase Fe-arsenide, such as CaFe_2As_2 (Fig. 5(h)), exhibits a vector $\frac{1}{2}(\pi, \pi)$. Note that two choices of first B.Z. have been commonly used for 122-phases [26]: body-centered tetragonal (two formula units) and primitive. The latter one is more convenient to compare with the 1144-phase. The two choices are compared in Fig. 5(h).

3D. Crystal structures

The crystal parameters (e.g., pnictogen angles and lattice constants) are interesting to study [57–61]. We discuss them from three aspects. The first aspect regards two general rules about 1144-phases, namely *middle-point rule* and *R-c rule*. The middle-point rule relates the lattice constants of the 1144-phase with those of its parent phases. That is, the c -lattice parameter of 1144-phase $c_{1144} = \frac{1}{2}(c_{122}^A + c_{122}^B)$, where c_{122}^A and c_{122}^B are the c -

lattice parameters of the two 122-phases (Fig. 6(a)). For example, KCaRu_4P_4 is at the middle point of KRu_2P_2 and CaRu_2P_2 . Remarkably, the rule generally applies to 1144-phases of phosphides and arsenides, and of various TM. However, the rule is only for the c -lattice, and considerable deviations are observed for a -lattice parameters (Fig. 6(b)). This finding suggests that complexity in 1144-systems (probably also for general hetero-crystals) could be segregated, i.e., the z -axis is the easy part and complexity mainly arises from the x - y plane. The other rule, *R-c rule*, links crystal features with atomic information: the mismatch of the c -lattice parameters of two 122-phases $\Delta c = |c_{122}^A - c_{122}^B|$ is proportional to the mismatch of atomic radius $\Delta R = |R_A - R_B|$, where R_A and R_B are atomic radii of cation elements (metallic radius [62]). Noteworthy, a linear correlation is satisfactorily yielded by the fitting of various TMs (Fig. 6(c)) and cation combinations (inset of Fig. 6(c)); again, such a correlation does not hold for a -lattice parameters. The linearity could be partially rationalized by the intuitive picture of imagining the cation as a “hard ball”. Since each unit cell contains two layers of cations, Δc should be linear with two times the diameter difference, i.e., $4 \cdot \Delta R$. However, the average slope is around $5 \cdot \Delta R$, somewhat deviating from the simple intuitive picture. The *R-c rule* is well verified by existing experimental data [4, 8] and a comparison is given in Sec. 8 of SI [39]. This reconciles the distinct descriptors used in previous studies [4, 8], i.e., ΔR and Δc are equivalent.

The second aspect concerns the strong asymmetry

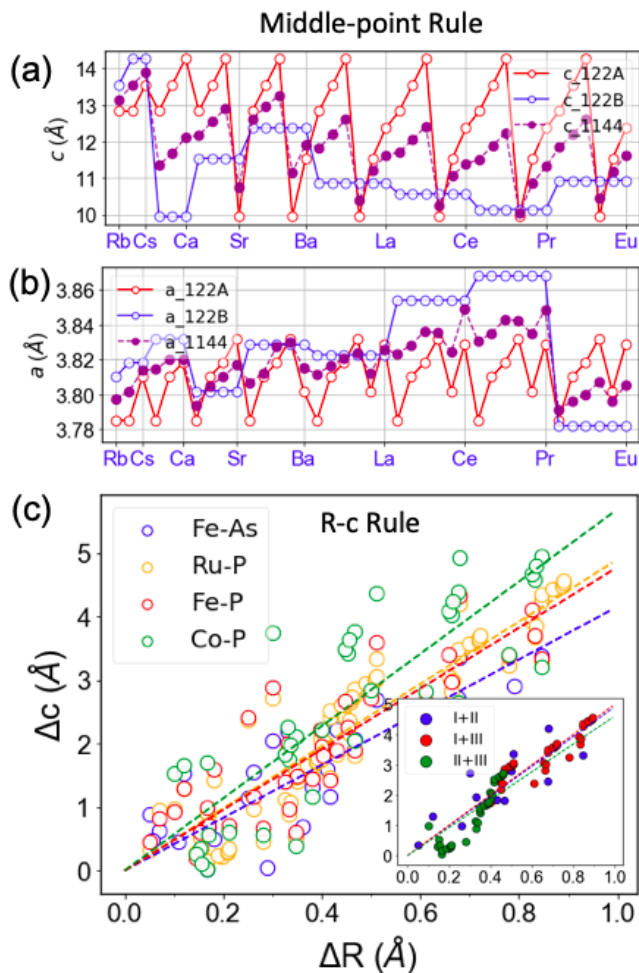


FIG. 6. (Color online) (a) The c -lattice parameters (calculation) for various 1144-phases (solid) and its parent phases (hollow). The solid spot is on the average of the two hollow spots. The full list of AB (from left to right): KRb, KCs, RbCs, KCa, RbCa, CsCa, KSr, RbSr, CsSr, CaSr, KBa, RbBa, CsBa, CaBa, SrBa, (K, Rb, Cs, Ca, Sr, Ba)Ln (Ln=La, Ce, Pr, Eu). For brevity, only B is listed on section boundaries. (b) The middle-point rule fails for a -lattice parameters, as considerable deviations are observed for CsCa, RbBa, CsBa, etc. (c) Linear fitting of Δc with ΔR . The slopes of different 1144-systems are quite close: $ABFe_4As_4$: 4.16, $ABRu_4P_4$: 4.90, $ABFe_4P_4$: 4.78, $ABCo_4P_4$: 5.69. The inset shows the fitting with grouping cation combinations, not distinguishing TM. The slopes are 4.91, 5.00, and 4.61 for I+II, I+III and II+III cations, respectively.

in structural parameters. Since the 1144-phase is the stacking of two 122-phases, we may wonder whether the TM-plane separation (inter-layer distance) in the 1144-phase remains the same as in the 122-phase. We define $\Delta d = d_{TM}^{1144} - d_{TM}^{122}$ to describe its displacement direction and amplitude (Sec. 7c of SI [39]). For Ru-phosphides, the TM-planes tend to move toward the higher-valence cation and away from the lower-valence. For instance in $CaKRu_4P_4$, the separation between TM-

layer and Ca^{2+} shrinks, while the separation between TM-layer and K^+ increases. On the contrary, for Co, the TM-plane will displace toward the lower-valence side. Ni- and Fe-1144-phases display both tendencies. [39] Whichever direction it will move, the displacement magnitudes $|\Delta d/d_{122}| \sim 5\%-10\%$ (Sec. 7 of [39]) are considerably larger than the structural change that is achievable by applying pressure. Besides, pnictogen (Pn) heights and Pn-TM-Pn bonding angles also undergo large changes. The large change does not happen in solid solution phase, for each cation layer takes equal amounts of charge, unlike A , B are living separately in 1144-phases, which intensely breaks the glide symmetry and affects superconductivity. [57, 59, 60].

The third aspect is regarding derivative phases, known as the half-collapsed phase (h-CT). In general, derivative phases can arise from particular architectures; for example, molecule folding emerges from long-chain architectures. h-CT refers to an abrupt collapse of the lattice constant c at certain external pressure, first observed in $KCaFe_4As_4$ [28]. The collapse happens in two steps: the first-step in Ca-layers, the second in K-layers [30]; so h-CT refers to such a state where one layer collapses and the other does not. h-CT is peculiar for HC as it is determined by two general features: layer-building and distinct compressive capacities of heterocation layers [16, 29, 30]. h-CT is a consequence of A - B symmetry breaking, and also grants a method of tuning asymmetry, which leads to, for instance, suppression of SC [63]. Forming the collapsed phase is related to the energy valley of a double-minimum [64]. In the language of bonding, it requires the Pn-Pn bonding to be strengthened and Pn-TM bonding to be weakened. Therefore, there exists a critical distance d_P (defined in Fig. 1(a)), below which the collapsed phase will be formed. The critical d_P is found to be 2.8~3.0 Å for Fe-arsenide 1144-phases, which is achievable with a moderate external pressure [29]. Noteworthy, Ru-phosphides 1144-systems exhibit smaller d_P and thereby may form h-CT with no or very little pressure, easier than Fe-arsenide. The critical d_P for phosphide is about 2.5 Å (Sec. 7e of [39]).

4. EXPERIMENTAL RESULTS

In this section we present our design and discovery of $CaKRu_4P_4$, a new example of a 1144-type compound and a proof of principle of our ability to identify and create new complex phases. $CaKRu_4P_4$ was chosen as a target phase based on the simultaneous large difference in the c -lattice parameter values and small difference in a -lattice parameter values exhibited by the KRu_2P_2 and $CaRu_2P_2$ ternary compounds. In addition, from a technical point of view, we had already mastered the simultaneous use of K and Ca as part of our efforts to grow $CaKFe_4As_4$. [6] We first synthesized KRu_2P_2 and $CaRu_2P_2$ as precur-

or compounds and then combined them to create the quaternary CaKRu_4P_4 . We want to emphasize that this synthesis truly was based on designing the compound, based on our understanding of the requirements needed to stabilize the 1144 structure, and then implementing this design in our synthesis.

4A. Synthesis procedure

Polycrystalline CaKRu_4P_4 samples were grown by solid state reaction. CaRu_2P_2 and KRu_2P_2 polycrystalline samples were synthesized first as precursors which were prepared by putting lumps of potassium metal (Alfa Aesar 99.95% metals basis) or calcium metal pieces (Ames Laboratory, Materials Preparation Center (MPC) 99.9%), ruthenium powder (Alfa Aesar 99.95% metals basis) and lumps of red phosphorus (Alfa Aesar 99.999% metals basis) into an alumina crucible that was arc-welded into a Ta tube and finally sealed into an amorphous silica ampoule. Because of the high vapor pressure of phosphorus, the temperature of furnace was ramped slowly, dwelling at 230°C and 500°C for 1 and 10 hours respectively, before being increased to 900°C and reacting for 96 hours. After cooling down to room temperature the initial reaction product was ground into powder and pressed into a pellet by tungsten carbide die press in argon filled glove-box. The pressed pellet was sealed in the manner described above and reacted at 900°C for another 96 hours. This process was repeated until phase pure KRu_2P_2 polycrystalline samples were synthesized. The similar process was repeated several times for CaRu_2P_2 until the phase was almost pure. Finally a pellet was pressed from a 1:1 molar ratio of CaRu_2P_2 and KRu_2P_2 . This pellet was heated to 850°C and kept there for 95 hours after which the pellet was cooled to room temperature, ground, pressed and resealed. This procedure was repeated until the CaKRu_4P_4 phase (88% purity) was formed. Higher purity is thought to be possible with proper adjustment of precursors ratio before reaction.

4B. Structural analysis

Powder x-ray diffraction measurement were carried out on finely ground CaRu_2P_2 and KRu_2P_2 using a Rigaku MiniFlex II powder diffractometer with Cu $K\alpha$ radiation ($\lambda = 1.5406 \text{ \AA}$) with refinements done by GSAS.[65] The PXRD data of CaKRu_4P_4 was recorded at room temperature on a PANalytical X-Pert Pro Diffraction System with Co $K\alpha$ radiation ($\lambda = 1.78897 \text{ \AA}$). Powdered sample was evenly dispersed on a zero-background Si-holder with the aid of a small quantity of vacuum grease. Intensities were collected for the 2θ range from 15° to 110° in step sizes of 0.02° and dwell times of 300 s for each step. FullProf Suite program package was used for Rietveld

TABLE II. X-ray data refinement including space group, formula units/cell and refined lattice parameters for CaRu_2P_2 and KRu_2P_2 .

CaRu_2P_2 I_4/mmm a : 4.044(4) c : 9.834(1)					
Atom(Mult)	x	y	z	Uiso	Occ.
Ca (2)	0	0	0	0.00361	1.0
Ru (4)	0	1/2	1/4	0.00357	1.0
P (4)	0	0	0.368(7)	0.00300	1.0
KRu_2P_2 I_4/mmm a : 4.016(7) c : 12.356(9)					
Atom(Mult)	x	y	z	Uiso	Occ.
K (2)	0	0	0	0.00869	1.0
Ru (4)	0	1/2	1/4	0.00160	1.0
P (4)	0	0	0.340(5)	0.00437	1.0

TABLE III. X-ray data collection, refinement and residual parameters for the experimental sample including space group(SG), formula units/cell (Z) and refined lattice parameters for each of the constituent phase.

	CaKRu_4P_4	RuP	CaRu_2P_2
SG, Z	$P4/mmm(123)$, 1	$Pnma(62)$, 4	$I_4/mmm(139)$,2
$a(\text{\AA})$	4.048(1)	5.524(1)	4.050(1)
$b(\text{\AA})$		3.158(1)	
$c(\text{\AA})$	10.913(1)	6.128(1)	9.756(1)
$V(\text{\AA}^3)$	178.85(3)	106.95(2)	160.34(3)
Radiation		Co $K\alpha=1.78901$	
2θ		15-110°	
No. of data		5679	
Uniq. data	152	112	70
No. of Var.		31	
residuals	$R_B=0.12$	$R_B=0.22$	$R_B=0.17$

refinement of the crystal structures [66].

The powder XRD pattern and Rietveld refinement for KRu_2P_2 , CaRu_2P_2 and CaKRu_4P_4 are shown in Fig. 7. X-ray refinement for CaRu_2P_2 and KRu_2P_2 are shown in Table II. The small difference in a-axis lattice parameters (4.044 versus 4.016 Å) and the large difference in c-lattice parameters (9.834 versus 12.356 Å) for CaRu_2P_2 and

TABLE IV. Atomic Coordinates for CaKRu_4P_4 , Isotropic Displacement Parameters (\AA^2), and Site Occupancies for the main phase

atom	position	Symm.	x	y	z	Biso	Occ.
Ca	1a	$4/mmm$	0	0	0	0.83(1)	1.0
K	1d	$4/mmm$	1/2	1/2	1/2	1.25(1)	1.0
Ru	4i	$2mm$	0	1/2	0.217(1)	1.22(1)	1.0
P1	2g	$4mm$	0	0	0.340(1)	1.92(1)	1.0
P2	2h	$4mm$	1/2	1/2	0.107(1)	0.28(1)	1.0

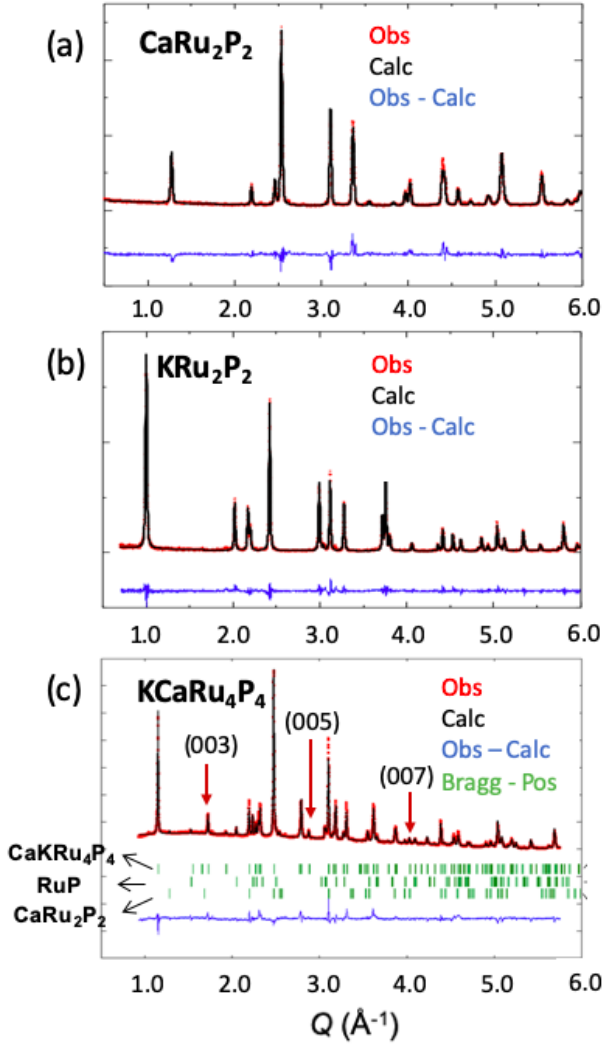


FIG. 7. (a)(b) Powder XRD pattern and Refinement of CaRu_2P_2 and KRu_2P_2 . (c) PXRd and Rietveld refinement results for the CaKRu_4P_4 . (003), (005) and (007) peaks are indicated by the red arrows. The observed profile is indicated by red circles and the calculated profile by the solid line. Bragg peak positions are indicated by vertical ticks, and the difference diffractogram is in blue.

KRu_2P_2 respectively are clearly seen. For the CaKRu_4P_4 sample, the X-ray data collection specifications, refined lattice parameters along with residual factors for all three phases are given in Table III, whereas the refined coordinates and isotropic displacement factors are presented for the main phase in Table IV. The clear appearance of peaks with $h + k + l = \text{odd}$ in Fig. 7(c). is the qualitative indication that the CaKRu_4P_4 phase has formed [4].

For the CaKRu_4P_4 refinement, first the zero-point shift and scale factor were refined. Next the lattice constants were refined, followed by the background parameters which involved a gradual increase of the polynomial used in the fit up to the sixth order. Consequently, the posi-

tional parameters are refined, beginning with the ruthenium atoms and followed by all phosphorus atoms. This is followed by refinement of the isotropic thermal parameters for all atoms at fixed 100% occupancies. Then the occupancy parameters are unfixed and refined together with thermal parameters. This step confirms 1:1:4:4 stoichiometry of the phase, as well as the Ca/K segregation to their separate unique sites, since minimal fluctuation ($<1\%$) of the occupancies is revealed at virtually same thermal parameters. Afterwards, profile-shape parameters are included with a peak-asymmetry correction for $2\theta < 40^\circ$. The final refinements with 31 parameters, including preferential alignment, and 5,679 data points were performed. Phase analysis of the data in Fig 7(c) gives $\sim 88\%$ of CaKRu_4P_4 estimated with $\sim 10\%$ CaRu_2P_2 and $\sim 2\%$ RuP after the final reaction. The existence of other phases may be due to imbalance of moles of CaRu_2P_2 and KRu_2P_2 during reaction.

5. DISCUSSION

Here we discuss hetero-crystals beyond 1144-phases. The so-called 12442-phase (e.g., $\text{K}(\text{Cs})\text{Ca}_2\text{Fe}_4\text{As}_4\text{F}_2$, [67, 68] $\text{Pr}_4\text{Fe}_2\text{As}_2\text{TeO}_4$ [69]) is obtained by stacking two 1111-phases on either side of one 122-phase (Fig. 8(a)). Since Ln-O or Ca-F layers effectively serve as $1+$ cations, it can be considered as alternative stacking of elemental cations Ca^{2+} and composite cations $(\text{Ln-O})^+$ or $(\text{Ca-F})^+$; the TM-layer is $(\text{Fe-As})^{1.5-}$. Notice that the 12442-phase has a second stacking type (Fig. 8(b)), with Fe-As and La-O interchanging their roles. We may still think of it as 1111+122, but an alternative viewpoint is the Fe-As layer being sandwiched by two dislocated layers of 122-phases. The latter viewpoint is more insightful because the Fe-As layer is the playground for SC and magnetism, while Ca or La-O altogether merely serve as electron donors. A particular stacking of the two could be achieved by selecting proper precursors [67, 69]. The 12442-phase implies that the cation could be a composite one, like $(\text{Ln-O})^+$, expanding the pool for cations, as well as allowing extra tuning parameters: the stacking type (distinction of Fig. 8(a) and (b)). Other examples include the 22241-phase (Fig. 8(c)) [70], which contains alternative stacking of 1221-phases and 122-phases. Interestingly, it builds in oxide motifs, which are another big family of parent compounds. Recently, 112-phase nickelate SC attracted much attention [35, 36], which belong to the same structure family of cuprate SC [71] and is a limiting case $n \rightarrow \infty$ for the series of compounds $\text{La}_{n+1}\text{Ni}_n\text{O}_{2n+1}$ [72]. In 112-phases, cations RE or IIA atoms are sandwiched by NiO_2 layers. We have seen many hetero-crystals in Fe-SC and it is interesting to examine Ni- or Cu-based SC.

Here, we shall revisit hetero-crystal's definition and compare it with some similar-looking compounds. (1)

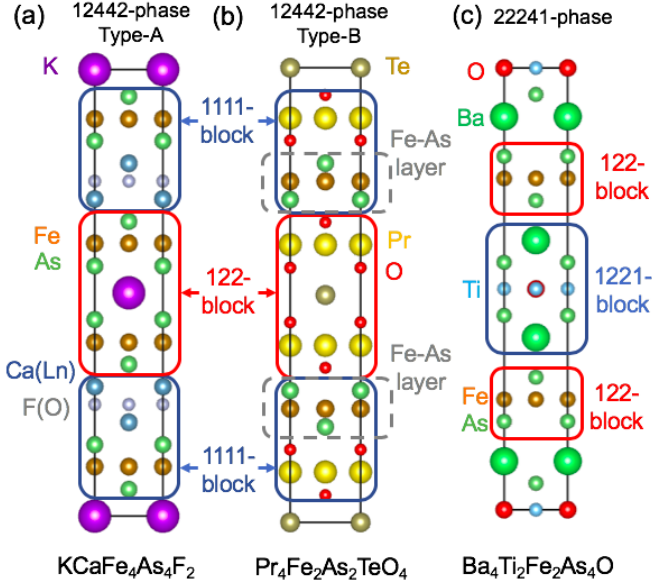


FIG. 8. (Color online) Examples of constructing heterocrystals. (a)(b) Two types of 12442-phase. Differences: type A: 4 layers of Fe-As and 2-layers of composite cation layers $(\text{Ca-F})^+$ per unit cell; type B: 2 layers of Fe-As and 4 layers of cation layers $(\text{Pr-O})^+$ (c) 22241-phase.

Layered structure ((ii) in Sec. 2) is an indispensable defining feature, i.e., bonding along z-axis should be weaker. On top of that, quasi-2D FS can form, nesting and unconventional SC are established. On the other hand, structures, such as pyrochlores or fluorite, [33] are 3D corner-sharing networks, featuring very different properties. Since they lack “layers”, the notions developed here, such as charge balance between layers, layer-stacking distortions, and corresponding descriptors may not apply. Thus, even with similar looks (A - B ordering), they are different types. (2) Asymmetry is another crucial characteristic ((iii) in Sec. 2). It does not exclude such situation as, for instance, $AABAAB$ -stacking, because the double-layer AA could be viewed as a single combined layer and asymmetry still occurs at the interface between AA and B . On the same account, it is acceptable for having a certain amount of stacking faults or disorder (e.g., the A -layer contains 10% B), as long as imperfections will not eliminate all the asymmetry. Conceptually, hetero-crystal is *not* equated with disorder free; in fact, disorder could be introduced on purpose as seen in Ni- or Co-doped $\text{CaKFe}_4\text{As}_4$ [17]. In that case, disorder enter through TM-layers not cation layers, and cation polarization maintains. The asymmetry can be characterized by defining $\varepsilon = (d_{TM}(A) - d_{TM}(B))/\Delta d_0$ or $\varepsilon = (\alpha(A) - \alpha(B))/\Delta\alpha_0$, where Δd_0 and $\Delta\alpha_0$ are normalization factors. Then, the definition refers to a finite regime of ε , rather than on the single perfect point $\varepsilon = 1$. (3) HC hybridizes two *stable* phases/motifs ((iv) in Sec.

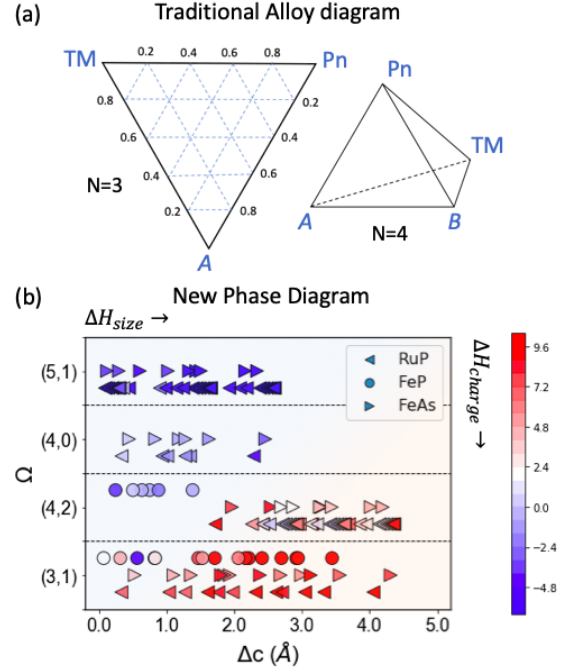


FIG. 9. (Color online) (a) Traditional phase diagram with $N = 3$ (triangle) and $N = 4$ (tetrahedron). The complexity of phase diagram will quickly increase with ingredient number N . Stable phases only sparsely distribute, leaving phase separation in most regions. [40] (b) Formation enthalpy of 1144-phases $ABRu_4P_4$, $ABFe_4P_4$, $ABFe_4As_4$ (color scales, meV/atom) vs collective descriptors as coordinates, with which the phase diagram could include compounds with flexible compositions and concentrations. It has a clear separation between the stable (red) and the unstable (blue) and is a generalization of phase diagram in [4].

2). However, compounds like NaYbO_2 [34] cannot be regarded as $\text{NaO} + \text{YbO}$ since each individual is unstable. Thus, NaYbO_2 is one phase with A - B ordered cations, rather than A - B ordered hybrids of two phases. Note that in the context of, for instance, pyrochlores-fluorite transition, the initial phase is “parent” and the resultant phase is “derivative”. Here, “parent phases” have different meanings, because firstly they must be in pair and then be hybridized. Without the *two* parent phases, pseudo-binary system might not be guaranteed, entropy formula Eq. 5 will become groundless.

Hetero-crystals allude to a fundamental view of exploring complex alloys, as reflected by a new type of phase diagram (Fig. 9). A traditional phase diagram is coordinated by information of an individual atom (e.g., elemental species and concentrations) and becomes cumbersome when $N > 3$ (Fig. 9(a)). We introduce a different set of coordinates: Δc (or Δa) defined by Eq. 2, 3, and a tuple $\Omega = (n_A + n_B, |n_A - n_B|)$, where n_A , n_B are valence electron numbers for cations A B . For example, KCaRu_4P_4 has $n_A = 1(\text{K})$, $n_B = 2(\text{Ca})$, thus $\Omega = (3, 1)$. These coordinates rely on the whole collection of involved atoms,

TABLE V. Formation enthalpy for stable 1144-systems. Units for Δa (Δc) and ΔH_0 are \AA and meV/atom, respectively

Ru-P	$ \Delta a $	$ \Delta c $	ΔH	Fe-P	$ \Delta a $	$ \Delta c $	ΔH
KCa	0.026	2.623	14.98	KEu	0.009	1.806	8.14
RbCa	0.022	3.328	15.44	RbEu	0.007	2.380	8.68
CsCa	0.033	4.057	18.04	CsEu	0.009	3.130	8.87
KLa	0.009	1.721	10.04	KLa	0.030	1.966	7.58
RbLa	0.005	2.426	10.19	RbLa	0.028	2.540	8.50
CsLa	0.016	3.155	11.79	CsLa	0.012	3.290	9.40
KEu	0.008	1.611	12.90				
RbEu	0.004	2.316	14.19				
CsEu	0.015	3.045	15.17				

rather than each individual, thus referred to as “collective”. Kind of the idea of using transformed coordinates q to describe collective modes; meanwhile, the information remains unchanged, since Δc , Δa , Ω are ultimately from the individual information.

As such, one obtains a new phase diagram (Fig. 9(b)) of reduced dimensions, which can embody entries with flexible chemical ingredients, such as Fig. 9(b) that has included Fe-arsenide, Ru- and Fe-phosphide. Descriptors Δc , Ω do not depend on the number of constituents, thus complexity will not rely on the compounds being ternary, quaternary or beyond. In addition, the separating between stable and unstable structures is sharp, which reflects the fact that Δc and Ω have captured two universal factors for hetero-crystals: size and charge effects. That is, x -axis Δc is in charge of ΔH_{size} and y -axis Ω in charge of ΔH_{charge} .

Traditional phase diagram is an efficient apparatus for SS that forms when entropy dictates. The hetero-crystal is an abnormality emerging out of the SS region, thus invokes new principles and methodology. The new paradigm changes the viewpoint about composite materials, which were based on combining multiple elementary atoms and tagged by the number of species, such as binary, ternary. In contrast, a hetero-crystal is always viewed as a “binary” system that combines two building units; but these units could be composite objects. In other words, for complex alloys, it is beneficial (also necessary) to introduce intermediate structure units in between the elementary level and the final crystal. Just like we consider biological structures as aggregation of protein molecules rather than elementary atoms. Parent phases or motifs play the role of the building units. Accordingly the attributes must be modified: Δc , Δa are derived from parent phases, known as collector descriptors. The strategy for synthesizing will also be modified. A common procedure to discover new compounds is choosing a structure prototype and substituting certain atom with another of similar individual properties, like

radius or electronegativity. It shifts the focus to studying the matching (or mismatch) of parent phases and motifs, which might lead to numerous hidden matter states.

At last we discuss the experimental realization. The compound $\text{La}A\text{Fe}_4\text{As}_4$ ($A=\text{K, Rb, Cs}$) is predicted to be stable[25], but its synthesis is still lacking. This is probably due to the parent phase LaFe_2As_2 being metastable, a significant difference from phosphides examined in present work. However, LaFe_2As_2 is recently synthesized [73]. Using LaFe_2As_2 as precursors renews the hope. This “failure” example also suggests the importance of stable parent phases (condition (iv) in Sec. 2).

6. SUMMARY

In summary, we introduce a class of A - B hetero-layer intermetallic crystals and address the following specific questions. What are they? Broadly existing or not? What are the main features? What influences or insights will they bring?

It is inspired by simple intuition: make the random substitution in metallic alloys into an ordered A - B stacking; in other words, replace the layers in semiconductor hetero-structures by some metallic ingredients, such as TM-layers and cations. To make the idea precise, four definitions are given (Sec. 2): (i) bulk materials, (ii) cation layers plus TM-layers, (iii) A - B stacking and reduced symmetry, (iv) formed with two parent phases.

Hetero-crystals may exist broadly, as seen in Fig. 4, 9. By computational searching in phosphides of 1144-phase (TM=Fe, Ru, Co, Ni), we found a series of stable structures at ambient temperatures and pressures, particularly for Fe- and Ru-phosphides. The most promising ones are put in Table V for a quick survey. Our prediction is supported by synthesis of high-purity KCaRu_4P_4 . The mechanism is the battling of enthalpy and configuration entropy. The enthalpy rises from size effects and charge balance, which could be characterized by two descriptors Δc and Ω (Fig. 9).

For crystal features, the TM-layers commonly has strong distortion (5%~10%) compared with the parent phase. Besides, we suggest two universal latent rules: middle point rule $c_{1144} = \frac{1}{2}(c_{122}^A + c_{122}^B)$, and R - c rule $\Delta c \simeq 5.0 \cdot \Delta R$. For electronic features, they commonly exhibit Fermi pockets, and weakening dispersion along the z -axis (Sec. 3C). Because of having d - and f -orbitals, they are often compounds interesting for SC, magnetism, heavy Fermions, etc.

These compounds upgrade our viewpoint about alloys, as they are always viewed as “binary” systems that combine two parent phases; that is, the parent phase plays a role of a structure motif that bridges the atom and the crystal. Thus, It brings renewed interest of many known phases that can serve as the parent phase. Such insights

also bring a new phase diagram that is coordinated by the so-called collective descriptors originating from parent phases. (Fig. 9).

Acknowledgement. We wish to acknowledge the very helpful discussion with William Meier, Sergey Bud'ko, and Duane Johnson. Work at Ames Laboratory was supported by the U.S. Department of Energy (DOE), Office of Science, Basic Energy Sciences, Materials Science and Engineering Division including a grant of computer time at the National Energy Research Supercomputing Center (NERSC) in Berkeley. Ames Laboratory is operated for the U.S. DOE by Iowa State University under contract number DE-AC02-07CH11358. RV acknowledges support by the Deutsche Forschungsgemeinschaft (DFG, German Research Foundation) for funding through TRR 288 — 422213477 (project A05 and B05).

-
- [1] K. S. Novoselov, D. Jiang, F. Schedin, T. J. Booth, V. V. Khotkevich, S. V. Morozov, and A. K. Geim, *Two-dimensional Atomic Crystals*, PNAS **102**, 10451 (2005).
- [2] J. W. Yeh, S. K. Chen, S. J. Lin, J. Y. Gan, T. S. Chin, T. T. Shun, C. H. Tsau, and S. Y. Chang, *Nanostructured High-Entropy Alloys with Multiple Principal Elements: Novel Alloy Design Concepts and Outcomes*, Adv. Eng. Mater **6**, 299 (2004).
- [3] E. P. George, D. Raabe and R. O. Ritchie, *High-entropy Alloys*, Nat. Rev. Mater **4**, 515 (2019).
- [4] A. Iyo, K. Kawashima, T. Kinjo, T. Nishio, S. Ishida, H. Fujihisa, Y. Gotoh, K. Kihou, H. Eisaki, and Y. Yoshida, *New-Structure-Type Fe-Based Superconductors: $CaAFe_4As_4$ ($A = K, Rb, Cs$) and $SrAFe_4As_4$ ($A = Rb, Cs$)*, J. Am. Chem. Soc. **138**, 3410 (2016).
- [5] D. Mou, T. Kong, W. R. Meier, F. Lochner, L.-L. Wang, Q. Lin, Y. Wu, S. L. Bud'ko, I. Eremin, D. D. Johnson, P. C. Canfield, and A. Kaminski, *Enhancement of the Superconducting Gap by Nesting in $CaKFe_4As_4$: A New High Temperature Superconductor*, Phys. Rev. Lett. **117**, 277001 (2016).
- [6] W. R. Meier, T. Kong, S. L. Bud'ko, and P. C. Canfield Phys. Rev. Materials **1**, 013401 (2017)
- [7] W. R. Meier, Q. P. Ding, A. Kreyssig, S. L. Bud'ko, A. Sapkota, K. Kothapalli, V. Borisov, R. Valenti, C. D. Batista, P. P. Orth, R. M. Fernandes, A. I. Goldman, Y. Furukawa, A. E. Bohmer, and P. C. Canfield, *Optimization of the Crystal Growth of the Superconductor $CaKFe_4As_4$ from Solution in $FeAs$ - $CaFe_2As_2$ - KFe_2As_2 System*, npj Quantum Materials **3**, 5 (2018).
- [8] B. Q. Song, Manh Cuong Nguyen, C. Z. Wang, and K. M. Ho Phys. Rev. B, *Stability of the 1144 Phase in Iron Pnictides*, **97**, 094105 (2018).
- [9] S. Ishida, A. Iyo, H. Ogino, H. Eisaki, N. Takeshita, K. Kawashima, K. Yanagisawa, Y. Kobayashi, K. Kimoto, H. Abe, M. Imai, J. Shimoyama and M. Eisterer, *Unique Defect Structure and Advantageous Vortex Pinning Properties in Superconducting $CaKFe_4As_4$* , npj Quantum Materials **4**, 27 (2019).
- [10] T. Xie, C. Liu, F. Bourdarot, L. P. Regnault, S. Li, and H. Luo, *Spin-excitation Anisotropy in the Bilayer Iron-based Superconductor $CaKFe_4As_4$* , Phys. Rev. Research **2**, 022018(R) (2020).
- [11] C. Zhang, T. Hu, T. Wang, Y. Wu, A. Yu, J. Chu, H. Zhang, H. Xiao, W. Peng, Z. Di, S. Qiao, G. Mu, *Observation of Two-dimensional Superconductivity in an Ultrathin Iron-Arsenic Superconductor*, 2D Mater. **8**, 025024 (2021).
- [12] K. Sasmal, B. Lv, B. Lorenz, A. M. Guloy, F. Chen, Y. Y. Xue, and C. W. Chu, *Superconducting Fe-Based Compounds ($A_{1-x}Sr_x$) Fe_2As_2 with $A=K$ and Cs with Transition Temperatures up to 37 K*, Phys. Rev. Lett. **101**, 107007 (2008).
- [13] G. Wu, H. Chen, T. Wu, Y. L. Xie, Y. J. Yan, R. H. Liu, X. F. Wang, J. J. Ying, and X. H. Chen, *Different Resistivity Response to Spin-density Wave and Superconductivity at 20 K in $Ca_{1-x}Na_xFe_2As_2$* , J. Phys.: Condens. Matter **20**, 422201 (2008).
- [14] S. Wu, Y. Song, Y. He, A. Frano, M. Yi, X. Chen, H. Uchiyama, A. Alatas, A. H. Said, L. Wang, T. Wolf, C. Meingast, and R. J. Birgeneau, *Short-Range Nematic Fluctuations in $Sr_{1-x}Na_xFe_2As_2$ Superconductors*, Phys. Rev. Lett. **126**, 107001 (2021).
- [15] Y. Liu, Y. B. Liu, Z. T. Tang, H. Jiang, Z. C. Wang, A. Ablimit, W. H. Jiao, Q. Tao, C. M. Feng, Z. A. Xu, and G. H. Cao, *Superconductivity and Ferromagnetism in Hole-doped $RbEuFe_4As_4$* , Phys. Rev. B **93**, 214503 (2016).
- [16] E. Gati, L. Xiang, S. L. Bud'ko, and P. C. Canfield, *Hydrostatic and Uniaxial Pressure Tuning of Iron-Based Superconductors: Insights into Superconductivity, Magnetism, Nematicity, and Collapsed Tetragonal Transitions*, Ann. Phys. (Berl.) **532**, 10 (2020).
- [17] W.-L. Zhang, W. R. Meier, T. Kong, P. C. Canfield, and G. Blumberg, *High- T_c Superconductivity in $CaKFe_4As_4$ in Absence of Nematic Fluctuations*, Phys. Rev. B **98** 140501(R) (2018).
- [18] A. Boehmer *et al.* in preparation.
- [19] W. Y. Liu, L. Cao, S. Zhu, L. Kong, G. Wang, M. Papaj, P. Zhang, Y. Liu, H. Chen, G. Li, F. Yang, T. Kondo, S. Du, G. Cao, S. Shin, L. Fu, Z. Yin, H-J Gao, and H. Ding, *A New Majorana Platform in an Fe-As Bilayer Superconductor*, Nature Comm. **11**, 5688 (2020).
- [20] L. Cao, Y. Song, Y. B. Liu, Q. Zheng, G. Han, W. Liu, M. Li, H. Chen, Y. Xing, G. H. Cao, H. Ding, X. Lin, S. Du, Y. Y. Zhang, G. Li, Z. Wang, H. J. Gao, *The As-surface of an Iron-based Superconductor $CaKFe_4As_4$* , Nano Research (2021).
- [21] Hao Jiang, Yun-Lei Sun, Zhu-An Xu, and Guang-Han Cao, *Crystal Chemistry and Structural Design of Iron-based Superconductors*, Chin. Phys. B **22**, 087410 (2013).
- [22] S. Biswas, Y. Li, S. M. Winter, J. Knolle, and R. Valenti, *Electronic Properties of α - $RuCl_3$ in Proximity to Graphene*, Phys. Rev. Lett. **123**, 237201 (2019).
- [23] H. Ikeda, M.-T. Suzuki, R. Arita, T. Takimoto, T. Shibauchi and Y. Matsuda, *Emergent rank-5 Nematic Order in URu_2Si_2* , Nature Phys. **8**, 528 (2012).
- [24] X. Y. Zhu, F. Han, G. Mu, P. Cheng, B. Shen, B. Zeng, and H. H. Wen, *Transition of Stoichiometric Sr_2VO_3FeAs to a Superconducting State at 37.2 K*, Phys. Rev. B **79**, 220512(R) (2009).
- [25] B. Q. Song, Manh Cuong Nguyen, C. Z. Wang, P. C. Canfield, and K. M. Ho, *Is it Possible to Stabilize the 1144-phase Pnictides with Tri-valence Cations?* Phys. Rev. Materials **2**, 104802 (2018).

- [26] David C. Johnston, *The Puzzle of High Temperature Superconductivity in Layered Iron Pnictides and Chalcogenides*, Adv. Phys. **59**, 803 (2010).
- [27] P. Dai, *Antiferromagnetic Order and Spin Dynamics in Iron-based Superconductors*, Rev. Mod. Phys. **87**, 855 (2015).
- [28] Udhara S. Kaluarachchi, et al., *Pressure-induced Half-collapsed-tetragonal Phase in $\text{CaKFe}_4\text{As}_4$* , Phys. Rev. B **96**, 140501(R) (2017).
- [29] Vladislav Borisov, Paul C. Canfield, and Roser Valenti, *Trends in Pressure-induced Layer-selective Half-collapsed Tetragonal Phases in the Iron-based Superconductor Family $\text{AeAFe}_4\text{As}_4$* , Phys. Rev. B **98**, 064104 (2018)
- [30] R. L. Stillwell, X. Wang, L. Wang, D. J. Campbell, J. Paglione, S. T. Weir, Y. K. Vohra, and J. R. Jeffries, *Observation of Two Collapsed Phases in $\text{CaRbFe}_4\text{As}_4$* , Phys. Rev. B **100**, 045152 (2019).
- [31] C. Wang, Q. He, U. Halim, Y. Liu, E. Zhu, Z. Lin, H. Xiao, X. Duan, Z. Feng, R. Cheng, N. O. Weiss, G. Ye, Y.-C. Huang, H. Wu, H.-C. Cheng, I. Shakir, L. Liao, X. Chen, W. A. Goddard III, Y. Huang and X. Duan, *Monolayer Atomic Crystal Molecular Superlattices*, Nature **555**, 231 (2018).
- [32] G. William Burg, Nitin Prasad, Kyoungwan Kim, Takashi Taniguchi, Kenji Watanabe, Allan H. MacDonald, Leonard F. Register, and Emanuel Tutuc, *Strongly Enhanced Tunneling at Total Charge Neutrality in Double-Bilayer Graphene- WSe_2 Heterostructures*, Phys. Rev. Lett. **120**, 177702 (2018).
- [33] S. T. Norberg, S. Hull, S. G. Eriksson, I. Ahmed, F. Kinyanjui, and J. J. Biendicho, *Pyrochlore to Fluorite Transition: the $\text{Y}_2(\text{Ti}_{1-x}\text{Zr}_x)_2\text{O}_7$ ($0.0 \leq x \leq 1.0$) System*, Chem. Mater. **24**, 4294 (2012).
- [34] Y. Hashimoto, M. Wakeshima, Y. Hinatsu, *Magnetic properties of ternary sodium oxides NaLnO_2 ($\text{Ln}=\text{rare earths}$)*, J. Solid State. Chem. **176**, 266-272 (2003).
- [35] A. S. Botana and M. R. Norman, *Similarities and Differences between LaNiO_2 and CaCuO_2 and Implications for Superconductivity*, Phys. Rev. X **10**, 011024 (2020).
- [36] D. Li, B. Y. Wang, K. Lee, S. P. Harvey, M. Osada, B. H. Goodge, L. F. Kourkoutis, and H. Y. Hwang, *Superconducting Dome in $\text{Nd}_{1-x}\text{Sr}_x\text{NiO}_2$ infinite Layer Films*, Phys. Rev. Lett. **125**, 027001 (2020).
- [37] G. Just, and P. Paufler, *On the Coordination of ThCr_2Si_2 (BaAl_4)-type Compounds within the Field of Free Parameters*, J. Alloys Compd **232**, 1 (1996).
- [38] J. P. Perdew, K. Burke, and M. Ernzerhof, *Generalized Gradient Approximation Made Simple*, Phys. Rev. Lett. **77**, 3865 (1996).
- [39] Supplementary information.
- [40] D. R. Gaskell, Introduction to the thermodynamics of materials, Taylor and Francis., 2008 fifth edition, pp. 263.
- [41] A. Togo and I. Tanaka, *First Principles Phonon Calculations in Materials Science*, Scr. Mater. **108**, 1-5 (2015).
- [42] P. J. Hirschfeld, M. M. Korshunov, and I. I. Mazin, *Gap Symmetry and Structure of Fe-based Superconductors*, Rep. Prog. Phys. **74**, 124508 (2011).
- [43] A. Chubukov, *Pairing Mechanism in Fe-Based Superconductors*, Annu. Rev. Condens. Matter Phys **3**, 57 (2012).
- [44] J. K. Glasbrenner, I. I. Mazin, Harald O. Jeschke, P. J. Hirschfeld, R. M. Fernandes and Roser Valenti, *Effect of Magnetic Frustration on Nematicity and Superconductivity in Iron Chalcogenides*, Nature Phys. **11**, 953 (2015).
- [45] E. Fradkin, S. A. Kivelson, and J. M. Tranquada, *Colloquium: Theory of Intertwined Orders in High Temperature Superconductors*, Rev. Mod. Phys. **87**, 457 (2015).
- [46] J. Kang and R. M. Fernandes, *Superconductivity in FeSe Thin Films Driven by the Interplay between Nematic Fluctuations and Spin-orbit Coupling*, Phys. Rev. Lett. **117**, 217003 (2016).
- [47] A. N. Yaresko, G.-Q. Liu, V. N. Antonov, and O. K. Andersen, *Interplay between Magnetic Properties and Fermi Surface Nesting in Iron Pnictides*, Phys. Rev. B **79**, 144421 (2009).
- [48] I. I. Mazin, and J. Schmalian, *Pairing Symmetry and Pairing State in Ferropnictides: Theoretical Overview*, Physica C **469**, 614-627 (2009).
- [49] A. B. Vorontsov, M. G. Vavilov, and A. V. Chubukov, *Superconductivity and Spin-density Waves in Multiband Metals*, Phys. Rev. B **81**, 174538 (2010).
- [50] E. Razzoli, M. Kobayashi, V. N. Strocov, B. Delley, Z. Bukowski, J. Karpinski, N. C. Plumb, M. Radovic, J. Chang, T. Schmitt, L. Patthey, J. Mesot, and M. Shi, *Bulk Electronic Structure of Superconducting LaRu_2P_2 Single Crystals Measured by Soft-X-Ray Angle-Resolved Photoemission Spectroscopy*, Phys. Rev. Lett. **108**, 257005 (2012).
- [51] G. Drachuck, A. Sapkota, W. T. Jayasekara, K. Kothapalli, S. L. Bud'ko, A. I. Goldman, A. Kreyssig, and P. C. Canfield, *Collapsed Tetragonal Phase Transition in LaRu_2P_2* , Phys. Rev. B **96**, 184509 (2017).
- [52] T. Yildirim, *Strong Coupling of the Fe-spin State and the As-As Hybridization in Iron-pnictide Superconductors from First-principle Calculations*, Phys. Rev. Lett. **102**, 037003 (2009).
- [53] P. Wiecki, V. Ogloblichev, A. Pandey, D. C. Johnston, and Y. Furukawa, *Coexistence of Antiferromagnetic and Ferromagnetic Spin Correlations in SrCo_2As_2 Revealed by ^{59}C and ^{75}As NMR*, Phys. Rev. B **91**, 220406(R) (2015).
- [54] J. E. Hirsch, *Two-dimensional Hubbard Model: Numerical Simulation Study*, Phys. Rev. B **31**, 4403 (1985).
- [55] Y.-Z. Zhang, I. Opahle, H. O. Jeschke, and R. Valenti, *Itinerant Nature of Magnetism in Iron Pnictides: A First-principles Study*, Phys. Rev. B **81**, 094505 (2010).
- [56] C.-Y. Moon and H. J. Choi, *Chalcogen-Height Dependent Magnetic Interactions and Magnetic Order Switching in $\text{FeSe}_x\text{Te}_{1-x}$* , Phys. Rev. Lett. **104**, 057003 (2010).
- [57] C.-H. Lee, et al., *Effect of Structural Parameters on Superconductivity in Fluorine-Free LnFeAsO_{1-y} ($\text{Ln}=\text{La}, \text{Nd}$)*, J. Phys. Soc. Jpn. **77**, 083704 (2008).
- [58] S. A. J. Kimber, et al., *Similarities between Structural Distortions under Pressure and Chemical Doping in Superconducting BaFe_2As_2* , Nature Materials **8**, 471 (2009).
- [59] K. Kuroki, H. Usui, S. Onari, R. Arita and H. Aoki, *Pnictogen Height as a Possible Switch between High- T_c Nodeless and Low- T_c Nodal Pairings in the Iron-based Superconductors*, Phys. Rev. B **79**, 224511 (2009).
- [60] H. Okabe, N. Takeshita, K. Horigane, T. Muranaka, and J. Akimitsu, *Pressure-induced High- T_c Superconducting Phase in FeSe : Correlation between Anion Height and T_c* , Phys. Rev. B **81**, 205119 (2010).
- [61] S. X. Huang, C. L. Chien, V. Thampy and C. Broholm, *Control of Tetrahedral Coordination and Superconductivity in $\text{FeSe}_{0.5}\text{Te}_{0.5}$ Thin Films*, Phys. Rev. Lett. **104**, 217002 (2010).
- [62] Peter Atkins, Shriver and Atkins' Inorganic Chemistry, Oxford University Press. 2010. pp. 74

- [63] D. E. Jackson, D. VanGennep, W. Bi, D. Zhang, P. Materne, Y. Liu, G.-H. Cao, S. T. Weir, Y. K. Vohra and J. J. Hamlin, *Superconducting and Magnetic Phase Diagram of $RbEuFe_4As_4$ and $CsEuFe_4As_4$ at High Pressure*, Phys. Rev. B **98**, 014518 (2018).
- [64] R. Hoffmann and C. Zheng, *Making and Breaking Bonds in the Solid State: The $ThCr_2Si_2$ Structure*, J. Phys. Chem. **89**, 4175 (1985).
- [65] A.C. Larson and R.B. Von Dreele, "General Structure Analysis System (GSAS)", Los Alamos National Laboratory Report LAUR 86-748 (2000).
- [66] J. Rodrigues-Carvajal Full Prof; Laboratoire Leon Brillouin, CEA-CNRS: Saclay, France 1998.
- [67] Z.-C. Wang, C.-Y. He, S.-Q. Wu, Z.-T. Tang, Y. Liu, A. Ablimit, C.-M. Feng, and G.-H. Cao, *Superconductivity in $KCa_2Fe_4As_4F_2$ with Separate Double Fe_2As_2 Layers*, J. Am. Chem. Soc. **138**, 7856 (2016).
- [68] F. K. K. Kirschner, D. T. Adroja, Z.-C. Wang, F. Lang, M. Smidman, P. J. Baker, G.-H. Cao, and S. J. Blundell, *Two-gap Superconductivity with Line Nodes in $CsCa_2Fe_4As_4F_2$* , Phys. Rev. B **97**, 060506(R) (2018).
- [69] S. Katrych, K. Rogacki, A. Pisoni, S. Bosma, S. Weyeneth, R. Gaal, N. D. Zhigadlo, J. Karpinski, and L. Forro, *$Pr_4Fe_2As_2Te_{1-x}O_4$: A Layered FeAs-based Superconductor*, Phys. Rev. B **87** 180508(R) (2013).
- [70] Y. L. Sun, H. Jiang, H. F. Zhai, J. K. Bao, W. H. Jiao, Q. Tao, C. Y. Shen, Y. W. Zeng, Z. A. Xu, and G. H. Cao, *$Ba_2Ti_2Fe_2As_4O$: A New Superconductor Containing Fe_2As_2 Layers and Ti_2O Sheets*, J. Am. Chem. Soc. **134**, 12893 (2012).
- [71] V. I. Anisimov, D. Bukhvalov, and T. M. Rice, *Electronic Structure of Possible Nickelate Analogs to the Cuprates*, Phys. Rev. B **59**, 7901 (1999).
- [72] V. V. Poltavets, K. A. Lokshin, S. Dikmen, M. Croft, T. Egami, and M. Greenblatt, *$La_3Ni_2O_6$: A New Double T' -type Nickelate with Infinite $Ni^{1+/2+}O_2$ Layers*, J. Am. Chem. Soc. **128**, 9050 (2006).
- [73] A. Iyo, S. Ishida, H. Fujihisa, Y. Gotoh, I. Hase, Y. Yoshida, H. Eisaki, and K. Kawashima, *Superconductivity in Uncollapsed Tetragonal $LaFe_2As_2$* , J. Phys. Chem. Lett. **10**, 1018 (2019).