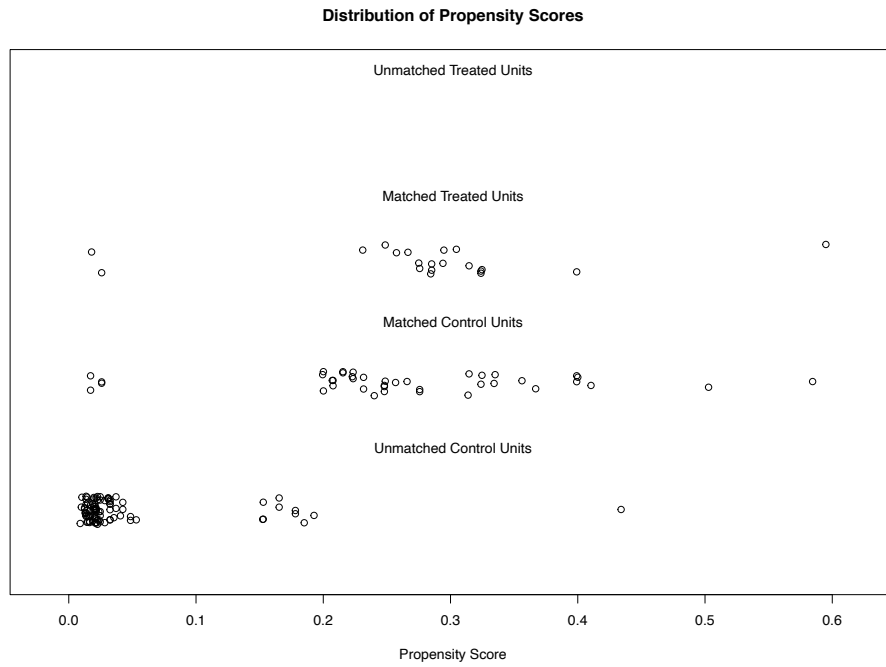


Supplementary Material

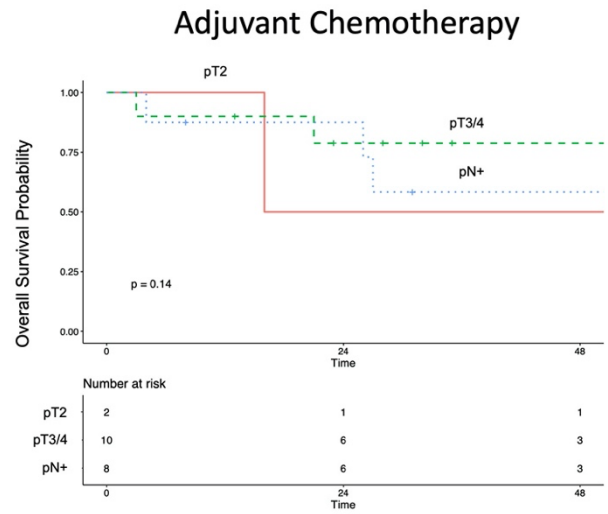
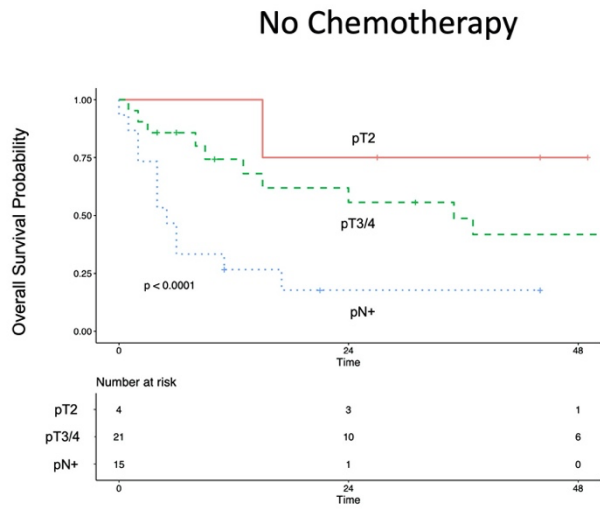
Evaluation of Preoperative Biopsy, Surgical Procedures and Oncologic Outcomes in Upper Tract Urothelial Carcinoma (UTUC)

Supplementary Table 1: Clinicopathological characteristics of the 151 patients with UTUC analyzed in this study. IQR = interquartile range; ECOG = Eastern Cooperative Oncology Group; ASA = American Society of Anaesthesiologists

Variable	n (151)	
Median Age (IQR)	72 (67 – 78)	
Gender	Male	97 (64%)
	Female	54 (36%)
ECOG	<2	109 (72%)
	≥2	6 (4%)
	NA	36 (24%)
ASA	1	7 (5%)
	2	91 (60%)
	3	39 (26%)
	NA	14 (9%)
Localization	Kidney pelvis	88 (58%)
	Ureter	39 (26%)
	Multiple	24 (16%)
Final tumor stage	≤pT1	78 (52%)
	pT2	16 (11%)
	pT3	46 (30%)
	pT4	11 (7%)
Lymph node metastases	pN0	62 (41%)
	pN+	25 (17%)
	pNx	64 (42%)
Final grading	Low grade	38 (26%)
	High grade	108 (72%)
Smoker	No	71 (47%)
	Yes (incl. Ex-smoker)	62 (41%)
	NA	18 (12%)



Supplementary Figure 1: Jitter plot for propensity score matching. Patients were matched in ratio 1 treated to 2 controls using the setting “optimal” considering postoperative tumor stage ($<pT3$; $\geq pT3$; $pN+$) and age as matching characteristics.



Supplementary Figure 2: Stratified survival analysis of the matched groups according to tumor and lymph node stage for overall survival. Log rank between the adjuvant chemotherapy and surveillance group $p=0.01$.