

INSECTA MUNDI

A Journal of World Insect Systematics

0121

Occurrence of the Old World bug *Megacopta cribraria* (Fabricius)
(Heteroptera: Plataspidae) in Georgia: a serious home invader and
potential legume pest

J. E. Eger, Jr.
Dow AgroSciences LLC
2606 S. Dundee St.
Tampa, FL 33629

L. M. Ames, D. R. Suiter, T. M. Jenkins
UGA Griffin Campus
Department of Entomology
1109 Experiment Street
Griffin, GA 30223

D. A. Rider
Department of Entomology
NDSU Dept. 7650
P. O. Box 6050
North Dakota State University
Fargo, ND 58108-6050

S. E. Halbert
Florida State Collection of Arthropods
Florida Department of Agriculture and Consumer Services
Division of Plant Industry
P. O. Box 147100
Gainesville, FL 32614-7100

Date of Issue: April 2, 2010

J. E. Eger, Jr., L. M. Ames, D. R. Suiter, T. M. Jenkins, D. A. Rider, and
S. E. Halbert

Occurrence of the Old World bug *Megacopta cribraria* (Fabricius) (Heteroptera:
Plataspidae) in Georgia: a serious home invader and potential legume pest
Insecta Mundi 0121: 1-11

Published in 2010 by

Center for Systematic Entomology, Inc.
P. O. Box 141874
Gainesville, FL 32614-1874 U. S. A.
<http://www.centerforsystematicentomology.org/>

Insecta Mundi is a journal primarily devoted to insect systematics, but articles can be published on any non-marine arthropod taxon. Manuscripts considered for publication include, but are not limited to, systematic or taxonomic studies, revisions, nomenclatural changes, faunal studies, book reviews, phylogenetic analyses, biological or behavioral studies, etc. **Insecta Mundi** is widely distributed, and referenced or abstracted by several sources including the Zoological Record, CAB Abstracts, etc.

As of 2007, **Insecta Mundi** is published irregularly throughout the year, not as quarterly issues. As manuscripts are completed they are published and given an individual number. Manuscripts must be peer reviewed prior to submission, after which they are again reviewed by the editorial board to insure quality. One author of each submitted manuscript must be a current member of the Center for Systematic Entomology.

Managing editor: Paul E. Skelley, e-mail: insectamundi@gmail.com

Production editor: Michael C. Thomas, e-mail: insectamundi@gmail.com

Editorial board: J. H. Frank, M. J. Paulsen

Subject editors: J. Eger, A. Rasmussen, F. Shockley, G. Steck, A. Van Pelt, J. Zaspel

Printed copies deposited in libraries of:

CSIRO, Canberra, ACT, Australia
Museu de Zoologia, São Paulo, Brazil
Agriculture and Agrifood Canada, Ottawa, Ontario, Canada
The Natural History Museum, London, England
Muzeum i Instytut Zoologii Pan, Warsaw, Poland
National Taiwan University, Taipei, Taiwan
California Academy of Sciences, San Francisco, CA, USA
Florida Department of Agriculture and Consumer Services, Gainesville, FL, USA
Field Museum of Natural History, Chicago, IL, USA
National Museum of Natural History, Smithsonian Institution, Washington, DC, USA

Electronic copies in PDF format:

Printed CD mailed to all members at end of year.

Florida Center for Library Automation: <http://purl.fcla.edu/fcla/insectamundi>

University of Nebraska-Lincoln, Digital Commons: <http://digitalcommons.unl.edu/insectamundi/>

Goethe Universität, Frankfurt am Mains: <http://edocs.ub.uni-frankfurt.de/volltexte/2010/14363/>

Author instructions available on the *Insecta Mundi* page at:

<http://www.centerforsystematicentomology.org/insectamundi/>

Printed Copy	ISSN 0749-6737
On-Line	ISSN 1942-1354
CD-ROM	ISSN 1942-1362

Occurrence of the Old World bug *Megacopta cribraria* (Fabricius) (Heteroptera: Plataspidae) in Georgia: a serious home invader and potential legume pest

J. E. Eger, Jr.

Dow AgroSciences LLC
2606 S. Dundee St.
Tampa, FL 33629
jeeger@dow.com

L. M. Ames, D. R. Suiter, T. M. Jenkins

UGA Griffin Campus
Department of Entomology
1109 Experiment Street
Griffin, GA 30223

D. A. Rider

Department of Entomology
NDSU Dept. 7650
P. O. Box 6050
North Dakota State University
Fargo, ND 58108-6050

S. E. Halbert

Florida State Collection of Arthropods
Florida Department of Agriculture and Consumer Services
Division of Plant Industry
P. O. Box 147100
Gainesville, FL 32614-7100

Abstract. Specimens of *Megacopta cribraria* (Fabricius) were collected in northern Georgia in late October 2009, where they were invading homes in large numbers. This is the first known occurrence of this species and the family Plataspidae in the New World. *Megacopta cribraria* was previously known from Asia and Australia. A key is provided to separate Plataspidae from other families of Pentatomoidea in America North of Mexico. A diagnosis and figures are provided to facilitate recognition of *M. cribraria*. Reported host plants and other aspects of the biology of this species are reviewed. *Megacopta cribraria* is considered a pest of numerous legumes in Asia, has the potential to provide biological control of kudzu, *Pueraria montana* var. *lobata* (Willd.) Ohwi, (Fabaceae) and likely will continue to be a household pest in the vicinity of kudzu fields as well as become a pest of North American legume crops.

Key words. Bean plataspid, stink bug, biological control, kudzu, *Pueraria montana* var. *lobata*, household pest.

Introduction

In mid-October, 2009, specimens and photos of *Megacopta cribraria* (Fabricius) were submitted to the University of Georgia Homeowner Insect & Weed Diagnostics Laboratory in Griffin, GA. The submissions were from several locations in northeast Georgia where this bug reportedly occurred in large numbers on houses. On 28 October, 2009, we visited one of these locations in Hoschton, Jackson Co., GA. There were thousands of *M. cribraria* on two houses at this location as well as on all surrounding vegetation. An examination of vegetation in the vicinity of the houses revealed a field of kudzu, *Pueraria montana* var. *lobata* (Willd.) Ohwi (Fabaceae), located about 30 m from the houses. Sweeping and beating the kudzu vines yielded large numbers of the bug, including a few late instar nymphs. The bugs had apparently developed on kudzu and had moved out of the kudzu field seeking overwintering sites at the houses.

Large numbers of these bugs were present not only on houses, but on vehicles in the area. A shopping center was located nearby, clearly creating a potential for spread of this bug on or in vehicles. We visited a second field of kudzu near Monroe, Walton Co., GA, where additional specimens of *M. cribraria* were found. Results of a survey to delineate the range of this species in Georgia will be published at a later date (Suiter, unpublished data).

This is the first species of the family Plataspidae reported from the Western Hemisphere although another species, *Coptosoma xanthogramma* (White), is established in the Hawaiian Islands (Beardsley and Fluker 1967). In this paper, we provide a key, diagnosis, and figures to facilitate recognition of *M. cribraria* in America north of Mexico, and review the biology and economic status of this species.

Key to Families of Pentatomoidea in America North of Mexico

- | | | |
|-------|---|-------------------------|
| 1. | Tarsi two-segmented | 2 |
| – | Tarsi three-segmented | 3 |
| 2(1). | Scutellum greatly enlarged, covering fore wings and most of abdomen (<i>Megacopta cribraria</i>) | Plataspidae |
| – | Scutellum small, triangular, not covering fore wings or most of abdomen | Acanthosomatidae |
| 3(1). | Pronotum expanded posteriorly, covering base of scutellum | Tessaratomidae |
| – | Pronotum not expanded posteriorly, base of scutellum exposed | 4 |
| 4(3). | Tibiae bearing many stout spines in addition to those occurring at apex of tibiae | 5 |
| – | Tibial spines, if present, confined to apex of tibiae | 6 |
| 5(4). | Fore tibiae enlarged, flattened, spines on lateral margins usually stout; scutellum not greatly enlarged, apex narrowly rounded | Cydnidae |
| – | Fore tibiae cylindrical, spines on lateral margins not larger than others; scutellum enlarged, covering most of abdomen, apex broadly rounded | Thyreocoridae |
| 6(4). | Scutellum not usually enlarged, if enlarged, short frena present | Pentatomidae |
| – | Scutellum enlarged, frena lacking | Scutelleridae |

Megacopta cribraria (Fabricius 1798)

Figure 1-4.

Cimex cribraria Fabricius, 1798: 531.

Tetyra cribraria: Fabricius 1803: 143.

Thyreocoris cribrarius [sic]: Burmeister 1835: 384.

Coptosoma cribrarium: Amyot and Serville 1843: 66, pl. 2, fig. 4.

Coptosoma xanthochlora Walker, 1867: 87 (Synonymized by Distant 1899).

Megacopta cribraria: Hsiao and Ren 1977: 21-22, 293, figs. 62, 69, 70, pl. 1, fig. 13.

Diagnosis. Small round species, 3.5 to 6.0 mm long; light brown to olive green with dark punctation (Fig. 1). Head flat, juga contiguous in front of tylus; second antennal segment one-third or less length of third segment. Tarsi two-segmented; tibiae setose, lacking stout spines. Scutellum enlarged, width nearly 1.5 times length, truncate or very broadly rounded posteriorly, widest on posterior fourth; base of scutellum with transversely elongate area outlined by distinct impressed line. Venter black, moderately punctate; females with broad pale area laterally on abdomen (Fig. 2), males with broad pale lateral area limited to second and third visible sternites, segments 4-6 black and densely setose laterally (Fig. 3). Fifth-instar nymphs 4-5 mm long, oval, light to dark brown, hirsute; lateral margins of thorax and abdomen somewhat flattened (Fig. 4).

Table 1. Reported leguminous (Fabaceae) host plants of *Megacopta* spp.

Common Name	Scientific Name	Reference
Bean, lablab bean, field bean.	<i>Lablab purpureus</i> (L.) Sweet (as <i>Dolichos lablab</i> L. and <i>L. purpureus</i> var. <i>lignosus</i>)	Ahmad and Moizuddin 1975, Fletcher 1921, Hoffmann 1932, Ramakrishna Ayyar 1913, Shroff 1920, Thejaswi et al. 2008, Thippeswamy and Rajagopal 1998, 2005a, 2005b
Kudzu	<i>Pueraria montana</i> var. <i>lobata</i> (Willd.) Ohwi (also as <i>P. lobata</i> Willd. and <i>P. thungergiana</i> Bentham)	Hibino and Ito 1983, Hosokawa et al. 2007, Ishihara 1950, Kershaw 1910, Sun et al. 2006, Tayutivutikul and Kusigemati 1992a, 1992b, Tayutivutikul and Yano 1990
Soybean	<i>Glycine max</i> Merrill	Ishihara 1950, Kobayashi 1981, Kono 1990, Takagi and Murakami 1997, Tayutivutikul and Kusigemati 1992a, Thippeswamy and Rajagopal 2005b, Wu and Xu 2002, Xing et al. 2006, 2008
Pigeon pea/red gram	<i>Cajanus indicus</i> Spreng.	Borah and Dutta 1999, Borah et al. 2002, Fletcher 1921, Hoffmann 1932, Shroff 1920, Ramakrishna Ayyar 1913, Thippeswamy and Rajagopal 2005b
Mung bean	<i>Phaseolus radiatus</i> L.	Easton and Pun 1997, Shroff 1920
Kidney beans	<i>Phaseolus vulgaris</i> L.	Easton and Pun 1997, Ishihara 1950
Lima bean	<i>Phaseolus lunatus</i> L.	Hoffmann 1931
Bean	<i>Phaseolus</i> spp.	Hoffmann 1932
Azuki bean	<i>Vigna angularis</i> (Willd.) Ohwi and Ohashi	Tayutivutikul and Kusigemati 1992a
Urd-bean	<i>Vigna mungo</i> (L.) Hepper (as <i>Phaseolus mungo</i> L.)	Fletcher 1921
Agathi	<i>Sesbania grandiflora</i> (L.) Pers.	Fletcher 1921, Hoffmann 1932, Ramakrishna Ayyar 1913
Cluster bean	<i>Cyanopsis tetragonoloba</i> (L.) Taub. (as <i>Cyanopsis psoraloides</i>)	Fletcher 1921, Hoffmann 1932, Ramakrishna Ayyar 1913
Lespedeza	<i>Lespedeza cyrtobotrya</i> Miq. (Also as <i>Lespedeza</i> spp.)	Hibino and Ito 1983, Tayutivutikul and Kusigemati 1992a
Vetch	<i>Vicia angustifolia</i> L.	Hibino and Ito 1983, Easton and Pun 1997
Broad bean	<i>Vicia faba</i> L.	Ishihara 1950
Wisteria	<i>Wisteria brachybotrys</i> Sieb. et Zucc.	Tayutivutikul and Kusigemati 1992a
Chinese milk vetch	<i>Astragalus sinicus</i> L.	Tayutivutikul and Kusigemati 1992a
Indigo	<i>Indigofera</i> sp.	Ramakrishna Ayyar 1913
Indian beech tree	<i>Pongamia pinnata</i> (L.) Pierre (as <i>P. glabra</i> Vent.)	Hoffmann 1932
Velvet bean, cowitch	<i>Mucuna pruriens</i> (L.) DC.	Rani and Sridhar 2004

Table 2. Reported non-leguminous host plants of *Megacocta* spp.

Common Name	Scientific Name	Family	Reference
Firecracker plant	<i>Crossandra infundibuliformis</i> (L.) Nees (as <i>Crossandra undulaefolia</i> Salisb.)	Acanthaceae	Srinivasaperumal et al. 1992
Compositae	Compositae	Compositae	Hoffmann 1932
Sweet potato	<i>Ipomoea batatas</i> Lam.	Convolvulaceae	Hoffmann 1932
Deutzia	<i>Deutzia crenata</i> Siebold and Zucc.	Hydrangeaceae	Tayutivutikul and Kusigemati 1992a
Cotton	<i>Gossypium hirsutum</i> L.	Malvaceae	Srinivasaperumal et al. 1992
Jute	<i>Corchorus capsularis</i> L.	Malvaceae	Hoffmann 1932
White mulberry	<i>Morus alba</i> L.	Moraceae	Zhang 1985
Chinese privet	<i>Ligustrum sinense</i> Lour.	Oleaceae	Zhang et al. 2008
Rice	<i>Oryza sativa</i> L.	Poaceae	Hoffmann 1932
Sugarcane	<i>Saccharum officinarum</i> L.	Poaceae	Hoffmann 1932
Wheat	<i>Triticum aestivum</i> L.	Poaceae	Tayutivutikul and Kusigemati 1992a
Citrus	<i>Citrus</i> spp.	Rutaceae	Tayutivutikul and Kusigemati 1992a
Potato	<i>Solanum tuberosum</i> L.	Solanaceae	Hoffmann 1932
Horsenettle	<i>Solanum carolinense</i> L.	Solanaceae	Imura 2003

Comments. Among North American Pentatomoidea, this bug is readily distinguished by the two-segmented tarsi and enlarged scutellum that is widest near the posterior margin and relatively truncate posteriorly. Other groups in which the scutellum is enlarged (Scutelleridae, Thyreocoridae, Pentatomidae: Asopinae and Podopinae) have three-segmented tarsi and the posterior margin of the scutellum is more narrowly rounded. Two-segmented tarsi also occur in the family Acanthosomatidae, but North American species of this family have a small triangular scutellum.

Megacocta cribraria, described by Fabricius (1798) as *Cimex cribrarius*, was later transferred to the genus *Coptosoma* (Laporte) by Amyot and Serville (1843). Hsiao and Ren (1977) transferred it to their new genus, *Megacocta*, where it remains today. Montandon (1896) described a closely related species, *M. punctatissima* (as *Coptosoma punctatissimum*). The following year, Montandon (1897) reported that he had seen specimens that were intermediate between *M. cribraria* and *M. punctatissima* but did not formally synonymize the two species. Yang (1934) revised the Chinese species of Plataspidae and considered *M. punctatissima* to be a variety of *M. cribraria*. Both names continue to be used today; however, primarily in Japanese economic literature (e.g. Hasegawa 1965, Hibino and Ito 1983, Himuro et al. 2006, Hirashima 1989, Imura 2003, Ishihara 1950, etc.). In fact, Hosokawa et al. (2007) stated that *Megacocta punctatissima* is found in mainland Japan and is a frequent pest of soybeans, whereas *M. cribraria* is found in the southwestern Japanese islands, rarely causes agricultural problems and is considered harmless to soybeans. They also indicated that the two species are capable of interbreeding and that their offspring reproduce successfully. These two taxa are distinguished primarily by color and size, *M. punctatissima* supposedly being darker and a little larger than *M. cribraria*. There appears to be no difference in morphology and the genitalia are indistinguishable. Specimens from Georgia are variable in size and fall within the range of coloration seen in museum specimens of *M. cribraria*. In addition, Jenkins et al. (2010) found that molecular characters for Georgia specimens are similar to those previously reported for *M. cribraria*. Although there appears to be some disagreement with regard to the taxonomic status of *M. punctatissima*, we are confident that the species found in Georgia is *M. cribraria*. Common names that have been used for this bug include bean plataspid, lablab bug, and globular stink bug.

Females of *M. cribraria* and related species of Plataspidae deposit small brown capsules on the underside of the egg masses. These capsules contain gut symbiotic bacteria ((-Proteobacterium *Candidatus Ishikawaella capsulata*) (Fukatsu and Hosokawa 2002, Hosokawa et al. 2006). As mentioned previously, Hosokawa et al. (2007) reported that *M. punctatissima* is a pest of soybeans whereas crop legumes are not suitable hosts for *M. cribraria*. When these authors transferred symbiotic bacteria from the 'pest' species *M. punctatissima* to the 'non-pest' species *M. cribraria*, soybeans became a suitable host for the latter species. Thus, differences between these two 'species' of *Megacopta* may be attributed to the symbiotic bacteria. Jenkins et al. (2010) confirmed the presence of this bacterial symbiont in bugs collected in Georgia.

Because *M. cribraria* and *M. punctatissima* are closely related and likely conspecific, the following sections contain information on both 'species.' Reports from Japanese authors usually refer to *M. punctatissima*, whereas all others refer to *M. cribraria*.

Distribution *Megacopta* spp. have been reported from Australia, China, India, Indonesia, Japan, Korea, Macao, Malaysia, Myanmar, New Caledonia, Pakistan, Sri Lanka, Taiwan, Thailand and Vietnam (Montandon 1896, 1897; Distant 1902; Kirkaldy 1910; Matsumura 1910; Shroff 1920; Esaki 1926; Hoffman 1931, 1935; Yang 1934; Ishihara 1937; Esaki and Ishihara 1951; Ahmad and Moizuddin 1975; Hsiao and Ren 1977; Lal 1980; Ren 1984; Hirashima 1989; Easton and Pun 1997). Prior to this discovery in Georgia, the family Plataspidae was restricted to the Old World (Froeschner 1984).

Host Plants and Pest Status *Megacopta* spp. have been reported most commonly from legumes (Fabaceae). Table 1 lists the leguminous plants reported as hosts for these bugs. Many of these are reported by multiple authors and numerous additional references to kudzu and soybean could be added. Additional references simply stated that these bugs feed on legumes, confirming that legumes are evidently the primary hosts of *Megacopta* spp. Non-leguminous hosts reported for *Megacopta* spp. are given in Table 2. Few are given by more than one author and those references that provided data on abundance or life stages for non-leguminous plants generally listed *Megacopta* spp. as uncommon or rare and the life stage encountered was usually adults. Most of these records probably represent incidental collections. However, Srinivasaperumal et al. (1992) report that *M. cribraria* survived and reproduced on firecracker plant, *Crossandra infundibuliformis* (L.) Nees (Acanthaceae) and cotton, *Gossypium hirsutum* L. (Malvaceae). Nymphs took longer to complete development and female fecundity was lower on these plants than on the legume *Sesbania grandiflora* (L.) Pers., but *M. cribraria* was able to complete development on these two non-legume plants.

Many of the host records in Tables 1 and 2 are simply records of *Megacopta* spp. on the plant and do not indicate pest status. Ahmad and Moizuddin (1975), Rekha and Mallapur (2007), Sujithra et al. (2008), Thejaswi et al. (2008) and Thippeswamy and Rajagopal (1998) reported that *M. cribraria* is a pest of field or lablab bean, whereas Ramakrishna Ayyar (1913) and Srinivasaperumal et al. (1992) stated that it was a serious pest on *Sesbania* spp. Hasegawa (1965), Lal (1980), Ren (1984), and Yang (1934) reported that *Megacopta* spp. are pests of legumes in general. A number of authors report that *Megacopta* spp. are pests of soybeans (Hosokawa et al. 2007, Ishihara 1950, Kobayashi 1981, Kono 1990, Wang et al. 1996, Wu and Xu 2002, and Xing et al 2008). Soybean yield loss ranged from 1-50% depending on density of the bugs (Wang et al. 1996). The reported pest status ranges from minor to severe. As an introduced species, this bug appears to have potential to be a pest of legume crops in the United States.

Megacopta spp. have also been investigated as a potential biological control agents for kudzu (Sun et al. 2006, Tayutivutikul and Kusigemati 1992a, Tayutivutikul and Yano 1990). Ishihara (1950) reported that kudzu is the preferred host for this species. However, there is no record of *Megacopta* spp. being imported to the U.S. for classical biological control of kudzu.

Thippeswamy and Rajagopal (2005b) reported that *M. cribraria* feeds on leaves, stems, flowers and pods, but prefers tender new growth to older growth. They also noted that white 'patches' developed at the site of feeding and later turned brownish, gradually coalescing into a necrotic area and that shoots withered with heavy infestations and bean pods did not develop normally.

Development The reported numbers of eggs deposited by females of *Megacopta* spp. ranged from 26 to 274; the development time from egg to adult was 24 to 56 days; and adult longevity was 23 to 77 days,

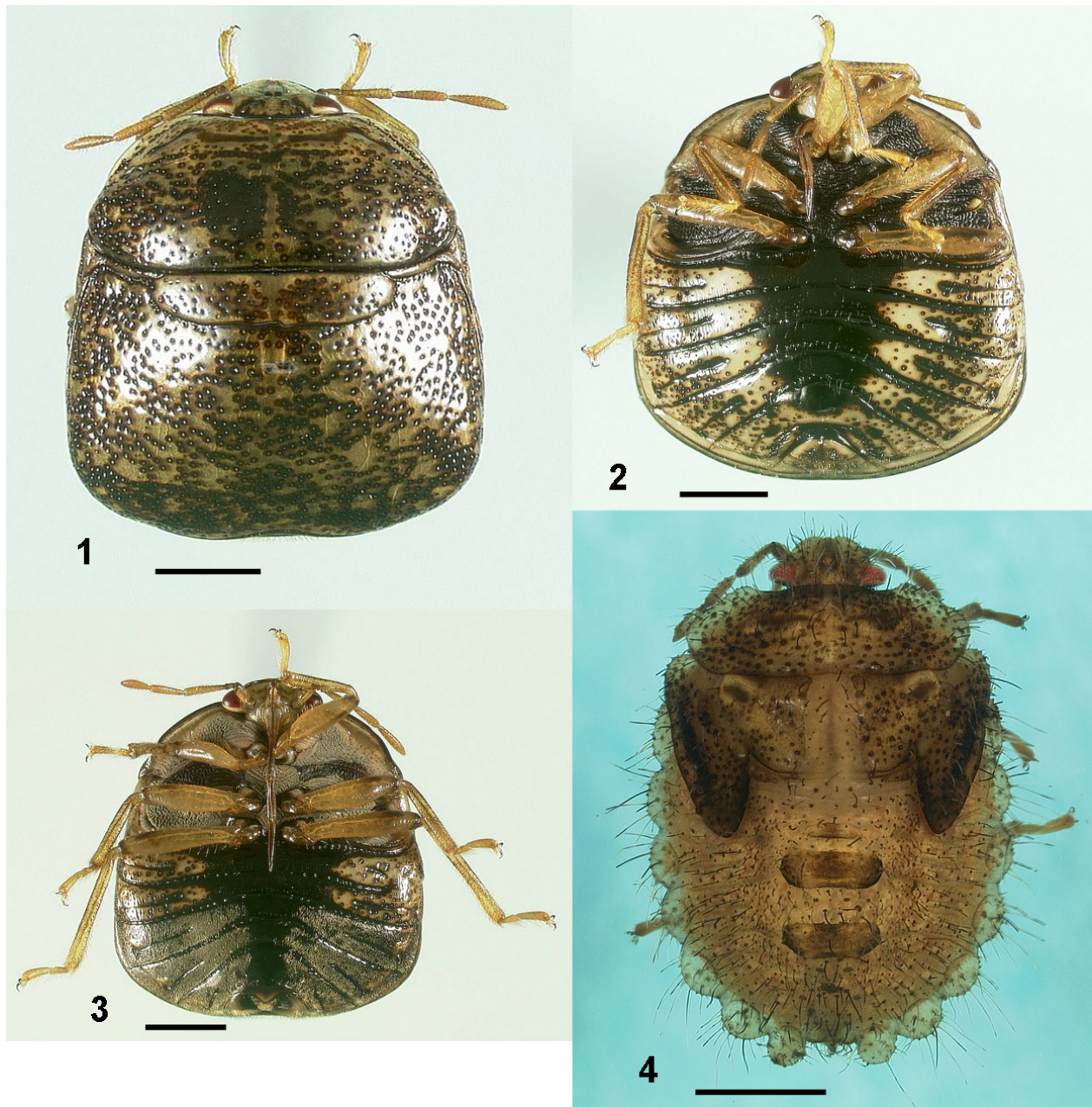


Figure 1-4. *Megacopta cribraria*. **1)** Male, dorsal view. **2)** Female, ventral view. **3)** Male, ventral view. **4)** Fifth instar nymph, dorsal view. Dimensional line equals 1.0 mm.

depending on location, temperature and other conditions (Ahmad and Moizuddin 1977, Ramakrishna Ayyar 1913, Srinivasaperumal et al. 1992, Tayutivutikul and Kusigemati 1992b, Tayutivutikul and Yano 1990, Thippeswamy and Rajagopal 2005b). There are one to three generations a year in China and Japan and *Megacopta* spp. overwinter as adults (Hibino and Ito 1983, Tayutivutikul and Kusigemati 1992b, Wu et al. 2006). Moizuddin and Ahmad (1979) described, figured and keyed the different immature stages of *M. cribraria*.

Megacopta spp. colonize crop fields in April to July and are present until August to October, depending on location and crop (Hibino and Ito 1983, Takagi and Murakami 1997, Tayutivutikul and Yano 1990, Thejaswi et al. 2008). In warmer areas, they may be active all year (Thippeswamy and Rajagopal 1998).

Large mating aggregations are common and females tend to accept copulation more frequently when males court in aggregations than when they court alone (Hibino 1985, 1986, 1989, Hibino and Ito 1983).

Natural Enemies Ahmad and Moizuddin (1976) reported *Reduvius* [sic!] sp. (Heteroptera: Reduviidae) feeding on adults and fifth-instar nymphs of *M. cribraria*. Parasitoids (Hymenoptera) reported from eggs of *Megacocta* spp. were *Ablerus* sp. (Aphelinidae) in India (Rajmohan and Narendran 2001); *Dirphys boswelli* (Girault) (Aphelinidae) in India (Polaszek and Hayat 1990); *Ooencyrtus nezarae* Ishi (Encyrtidae) in China and Japan (Hirose et al. 1996, Takasu and Hirose 1991a, 1991b, Tayutivutikul and Yano 1990, Wu et al. 2006); *Ooencyrtus* sp. (Encyrtidae) and *Trissolcus* sp. (Scelionidae) in China (Zhang et al. 2003); *Paratelenomus saccharalis* (Dodd) (Scelionidae) in China, India and Japan, (Hirose et al. 1996, Rajmohan and Narendran 2001, Takagi and Murakami 1997, Wall 1928, Watanabe 1954, Wu et al. 2006, Yamagishi 1990); *Telenomus laticulcus* Crawford (Scelionidae) in India (Mani and Sharma 1982); and *Telenomus* sp. (Scelionidae) in Pakistan (Ahmad and Moizuddin 1976). Synonyms for *P. saccharalis* are *Asolcus minor* (Watanabe), *Archiphannurus minor* and *Paratelenomus minor* (Johnson 1996). Borah and Dutta (2002) and Borah and Sarma (2009) reported that the fungal pathogen *Beauveria bassiana* (Balsamo) Vuillemin attacks *M. cribraria* in India.

The large numbers of *M. cribraria* found on kudzu suggests that this bug may provide some biological control of kudzu. The tendency of *M. cribraria* to aggregate on and in houses suggests that it may become an even greater household pest. Because there are few crops in the area around the current infestation, the potential impact of this species on crops in the United States is unknown. Continued surveillance to determine the distribution and spread of *M. cribraria* is needed, as is research to determine the host range of the population in Georgia and the efficacy of various control measures.

Acknowledgments

We would like to thank Tom Henry, National Museum of Natural History, who confirmed the identity of *M. cribraria* and provided comments on the manuscript, and Julieta Brambila and Tad Dobbs, both with USDA-APHIS-PPQ, for reviewing the manuscript.

Literature Cited

- Ahmad, I., and M. Moizuddin. 1975.** Scent apparatus morphology of bean plataspid *Coptosoma cribrarium* (Fabricius) (Pentatomoidea: Plataspidae) with reference to phylogeny. *Pakistan Journal of Zoology* 7(1): 45-49.
- Ahmad, I., and M. Moizuddin. 1976.** Biological control measures of bean plataspids (Heteroptera: Pentatomoidea) in Pakistan. *Proceedings of the Entomological Society of Karachi* 6: 85-86.
- Ahmad, I., and M. Moizuddin. 1977.** Quantitative life-history of bean plataspid; *Coptosoma cribrarium* (Fabr.) (Heteroptera: Pentatomoidea). *Pakistan Journal of Scientific and Industrial Research* 20(6): 366-370.
- Amyot, C. J. B., and J. G. A. Serville. 1843.** Histoire naturelle des insectes Hémiptères. In: "Suites à Buffon." Fain et Thunot; Paris. LXXVI + 675 + 8 p.
- Beardsley, J. W., Jr. and S. Fluker. 1967.** *Coptosoma xanthogramma* (White) (Hemiptera: Plataspidae), a new pest of legumes in Hawaii. *Proceedings of the Hawaiian Entomological Society* 19: 367-372.
- Borah, B. K., and S. K. Dutta. 1999.** Spatial distribution of *Megacocta cribrarium* (Fab.) adults on pigeonpea. *JASS* 12(2): 178-184.
- Borah, B. K., and S. K. Dutta. 2002.** Entomogenous fungus, *Beauveria bassiana* (Balsamo) Vuillemin: a natural biocontrol agent against *Megacocta cribrarium* (Fab.). *Insect Environment* 8(1): 7-8.
- Borah, B. K., S. K. Dutta, and K. K. Sarmah. 2002.** Dispersion pattern of *Megacocta cribrarium* (Fab.) nymphs on pigeon pea. *Research on Crops* 3(2): 441-445.
- Borah, B. K., and K. K. Sarma. 2009.** Pathogenicity of entomopathogenous fungus, *Beauveria bassiana* (Balsamo) Vuillemin on *Megacocta cribrarium* (Fab.): a sucking pest of pigeonpea. *Insect Environment* 14(4): 159-160.
- Burmeister, H. C. C. 1835.** Handbuch der Entomologie. Vol. 2, Abt. I. Theob. Ehr. Friedr. Enslin; Berlin. ii + 400 + 4 p.

- Distant, W. L. 1899.** Rhynchotal notes - Heteroptera: Plataspidinae, Thyreocorinae, and Cydninae. *Annals and Magazine of Natural History* (7)4: 213-227.
- Distant, W. L. 1902.** The Fauna of British India, Including Ceylon and Burma. Heteroptera. Volume 1. Taylor and Francis; London. xxxviii + 438 p.
- Easton, E. R., and W.-W. Pun. 1997.** Observations on some Hemiptera/Heteroptera of Macau, South-east Asia. *Proceedings of the Entomological Society of Washington* 99(3): 574-582.
- Esaki, T. 1926.** Verzeichniss der Hemiptera-Heteroptera der Insel Formosa. *Annales Historico-Naturales Musei Nationalis Hungarici* 24: 136-189.
- Esaki, T., and T. Ishihara. 1951.** Hemiptera of Shansi, North China II. Pentatomoidea. *Mushi* 22(5): 29-44, 7 pls.
- Fabricius, J. C. 1798.** *Entomologia systematica emendata et auct, secundum classes, ordines, genera, species, adjectis synonymis, locis, observationibus. Supplementum. Proft et Storch, Copenhagen.* ii + 572 p.
- Fabricius, J. C. 1803.** *Systema Rhyngotorum secundum ordines, genera, species adjectis, synonymis, locis, observationibus, descriptionibus.* C. Reichard, Brunswick. x + 335 p.
- Fletcher, T. B. 1921.** Annotated list of Indian crop-pests. *Bulletin of the Indian Agricultural Research Institute, Pusa* 100: 1-246.
- Froeschner, R. C. 1984.** Does the Old World family Plataspidae (Hemiptera) occur in North America? *Entomological News* 95(1): 36.
- Fukatsu, T., and T. Hosokawa. 2002.** Capsule transmitted gut symbiotic bacterium of the Japanese common plataspid stinkbug, *Megacopta punctatissima*. *Applied and Environmental Microbiology* 68(1): 389-396.
- Hasegawa, H. 1965.** Major pests of economic plants in Japan. Japan Plant Protection Association; Tokyo. 412 p.
- Hibino, Y. 1985.** Formation and maintenance of mating aggregations in a stink bug, *Megacopta punctatissima* [sic!] (Montandon) (Heteroptera, Plataspidae). *Journal of Ethology* 3: 123-129.
- Hibino, Y. 1986.** Female choice for male gregariousness in a stink bug, *Megacopta punctatissima* [sic!] (Montandon) (Heteroptera, Plataspidae). *Journal of Ethology* 4(2): 91-95.
- Hibino, Y. 1989.** Mating aggregation and female preference among aggregating males in a stink bug. *Insectarium* 26(2): 40-44.
- Hibino, Y., and Y. Ito. 1983.** Mating aggregation of a stink bug, *Megacopta punctatissima* (Montandon) (Heteroptera: Plataspidae). *Researches on Population Ecology* 25(1): 180-188.
- Himuro, C., T. Hosokawa, and N. Suzuki. 2006.** Alternative mating strategy of small male *Megacopta punctatissima* (Hemiptera: Plataspidae) in the presence of large intraspecific males. *Annals of the Entomological Society of America* 99(5): 974-977.
- Hirashima, Y. 1989.** A check list of Japanese insects. Vol. I. Faculty of Agriculture, Kyushu University & Center for the Study of Japanese Field Life; Fukuoka, 540 p.
- Hirose, Y., K. Takasu, and M. Takagi. 1996.** Egg parasitoides of phytophagous bugs in soybean: mobile natural enemies as naturally occurring biological control agents of mobile pests. *Biological Control* 7(1): 84-94.
- Hoffmann, W. E. 1931.** Notes on Hemiptera and Homoptera at Canton, Kwangtung Province, Southern China 1924-1929. *USDA Insect Pest Survey Bulletin* 11(3): 138-151.
- Hoffmann, W. E. 1932.** Notes on the bionomics of some Oriental Pentatomidae (Hemiptera). *Archivum Zoologico Italiano (Torino)* 16(3/4): 1010-1027.
- Hoffmann, W. E. 1935.** An abridged catalogue of certain Scutelleroidea (Plataspidae, Scutelleridae, and Pentatomidae) of China, Chosen, Indo-China, and Taiwan. *Lingnan University Science Bulletin* 7: 1-294.
- Hosokawa, T., Y. Kikuchi, N. Nikoh, M. Shimada, and T. Fukatsu. 2006.** Strict host-symbiont cospeciation and reductive genome evolution in insect gut bacteria. *PLOS Biology* 4(10): 1841-1851.
- Hosokawa, T., Y. Kikuchi, M. Shimada, and T. Fukatsu. 2007.** Obligate symbiont involved in pest status of host insect. *Proceedings of the Royal Society Biological Sciences Series B* 274(1621): 1979-1984.

- Hsiao, T.-Y., and S.-Z. Ren. 1977.** *Megacopta*. p. 21-29, 293-295. *In*: T.-Y. Hsiao, L.-Y. Zheng, S.-Z. Ren, et al. (eds.) A handbook for the determination of the Chinese Hemiptera-Heteroptera. Volume 1. Scientific Publishing Co.; Beijing. 330 p.
- Imura, O. 2003.** Herbivorous arthropod community of an alien weed *Solanum carolinense* L. Applied Entomology and Zoology 38(3): 293-300.
- Ishihara, T. 1937.** A list of Heteroptera from Hiroshima Prefecture. Part I. The Entomological World 5: 475-492.
- Ishihara, T. 1950.** The developmental stages of some bugs injurious to the kidney bean (Hemiptera). Transactions of the Shikoku Entomological Society 1: 17-31.
- Jenkins, T., D. Suiter, J. Eger, L. Ames, D. Buntin, and T. Eaton. 2010.** The preliminary genetics of an invasive true bug from the Old World: Implications for the New World. Journal of Entomological Science 45: 1-2.
- Johnson, N. F. 1996.** Revision of World species of *Paratelenomus* Dodd (Hymenoptera: Scelionidae). Canadian Entomologist 128: 273-291.
- Kershaw, J. C. W. 1910.** On the metamorphoses of two coptosomine Hemiptera from Macao. [with notes by G. W. Kirkaldy]. Annales de la Société Entomologique de Belgique. 54: 69-73.
- Kirkaldy, G. W. 1910.** A list of the Hemiptera of oriental China. Part II. Annales de la Société Entomologique de Belgique 54: 103-112.
- Kobayashi, T. 1981.** Insect pests of soybeans in Japan. Miscellaneous Publications of the Hohoku National Agricultural Experiment Station 2: 1-39.
- Kono, S. 1990.** Spatial distribution of three species of stink bugs attacking soybean seeds. Japanese Journal of Applied Entomology and Zoology 34(2): 89-96.
- Lal, O. P. [1975] 1980.** A compendium of insect pests of vegetables in India. Bulletin of the Entomological Society of India 16(1-2): 52-88.
- Mani, M. S. and S. K. Sharma. 1982.** Proctotrupeoidea (Hymenoptera) from India. A review. Oriental Insects 16: 135-258.
- Matsumura, S. 1910.** Die schädlichen und nützlichen Insekten vom Zuckerrohr Formosas. Zeitschrift für Wissenschaftliche Insektbiologie 6: 136-139.
- Moizuddin, M., and I. Ahmad. [1975] 1979.** Eggs and nymphal systematics of *Coptosoma cribrarium* (Fabr.) (Pentatomoidea: Plataspidae) with a note on other plataspids and their phylogeny. Records, Zoological Survey of Pakistan 7(1-2): 93-100.
- Montandon, A. L. 1896.** Plataspidae. Nouvelle série d'études et descriptions. Annales de la Société Entomologique de Belgique 40: 86-134.
- Montandon, A. L. 1897.** Les Plataspides du Muséum d'histoire naturelle de Paris. Annales de la Société Entomologique de France 1896: 436-464.
- Polaszek, A., and M. Hayat. 1990.** *Dirphys boswelli* (Hymenoptera: Aphelinidae) an egg-parasitoid of Plataspidae (Heteroptera). Journal of Natural History 24(1): 1-5.
- Rajmohan, K., and T. C. Narendran. 2001.** Parasitoid complex of *Coptosoma cribrarium* (Fabricius) (Plataspidae: Hemiptera). Insect Environment 6(4): 163.
- Ramakrishna Ayyar, T. V. 1913.** On the life history of *Coptosoma cribraria* Fabr. Journal of the Bombay Natural History Society 22: 412-414.
- Rani, B. J., and V. Sridhar. 2004.** Record of arthropod pests on velvet bean, *Mucuna pruriens* var. *utilis* under Bangalore conditions. Journal of Medicinal and Aromatic Plant Sciences 26: 505-506.
- Rekha, S., and C. P. Mallapur. 2007.** Abundance and seasonability of sucking pests of dolichos bean. Karnataka Journal of Agricultural Science 20(2): 397-398.
- Ren, S. 1984.** Studies on the fine structure of egg-shells and the biology of *Megacopta* Hsiao et Jen from China (Hemiptera: Plataspidae). Entomotaxonomia 6(4): 327-332.
- Shroff, K. D. 1920.** A list of the pests of pulses in Burma. p. 343-346. *In*: T. B. Fletcher (ed.). Proceedings of the Third Entomological Meeting, Pusa 1919, Vol. 1. 417 p.
- Srinivasaperumal, S., P. Samuthiravelu, and J. Muthukrishnan. 1992.** Host plant preference and life table of *Megacopta cribraria* (Fab.) (Hemiptera: Plataspidae). Proceedings of the Indian National Academy, Part B (Biological Sciences) 58(6): 333-340.

- Sujithra, M., S. Srinivasan, and K. V. Hariprasad. 2008.** Outbreak of lablab bug, *Coptosoma cribraria* Fab. on field bean, *Lablab purpureus* var. *lignosus* Medikus. *Insect Environment* 14(2): 77-78.
- Sun, J.-H., Z.-D. Liu, K. O. Britton, P. Cai, D. Orr, and J. Hough-Goldstein. 2006.** Survey of phytophagous insects and foliar pathogens in China for a biocontrol perspective on kudzu, *Pueraria montana* var. *lobata* (Willd.) Maesen and S. Almeida (Fabaceae). *Biological Control* 36: 22-31.
- Takagi, M., and K. Murakami. 1997.** Effect of temperature on development of *Paratelenomus saccharalis* (Hymenoptera: Scelionidae), an egg parasitoid of *Megacopta punctatissimum* (Hemiptera: Plataspidae). *Applied Entomology and Zoology* 32(4): 659-660.
- Takasu, K., and Y. Hirose. 1991a.** Host searching behavior in the parasitoid *Ooencyrtus nezarae* Ishi (Hymenoptera: Encyrtidae) as influenced by non-host food deprivation. *Applied Entomology and Zoology* 26(3): 415-417.
- Takasu, K., and Y. Hirose. 1991b.** The parasitoid *Ooencyrtus nezarae* (Hymenoptera: Encyrtidae) prefers hosts parasitized by conspecifics over unparasitized hosts. *Oecologia* (Berlin) 87(3): 319-323.
- Tayutivutikul, J., and K. Kusigemati. 1992a.** Biological studies of insects feeding on the kudzu plant, *Pueraria lobata* (Leguminosae) I. List of feeding species. *Memoirs of the Faculty of Agriculture, Kagoshima University* 28(37): 89-124.
- Tayutivutikul, J., and K. Kusigemati. 1992b.** Biological studies of insects feeding on the kudzu plant, *Pueraria lobata* (Leguminosae). II. Seasonal abundance, habitat and development. *South Pacific Study* 13(1): 37-88, 1 pl.
- Tayutivutikul, J., and K. Yano. 1990.** Biology of insects associated with the kudzu plant, *Pueraria lobata* (Leguminosae). 2. *Megacopta punctatissimum* [sic!] (Hemiptera, Plataspidae). *Japanese Journal of Entomology* 58(3): 533-539.
- Thejaswi, L., M. I. Naik, and M. Manjunatha. 2008.** Studies on population dynamics of pest complex of field bean (*Lablab purpureus* L.) and natural enemies of pod borers. *Karnataka Journal of Agricultural Sciences* 21(3): 399-402.
- Thippeswamy, C., and B. K. Rajagopal. 1998.** Assessment of losses caused by the lablab bug, *Coptosoma cribraria* (Fabricius) to the field bean, *Lablab purpureus* var. *lignosus* Medikus. *Karnataka Journal of Agricultural Sciences* 11(4): 941-946.
- Thippeswamy, C., and B. K. Rajagopal. 2005a.** Life history of lablab bug, *Coptosoma cribraria* Fabricius (Heteroptera: Plataspidae) on field bean, *Lablab purpureus* var. *lignosus* Medikus. *Karnataka Journal of Agricultural Sciences* 18(1): 39-43.
- Thippeswamy, C., and B. K. Rajagopal. 2005b.** Comparative biology of *Coptosoma cribraria* Fabricius on field bean, soybean and redgram. *Karnataka Journal of Agricultural Sciences* 18(1): 138-140.
- Walker, F. 1867.** Catalogue of the specimens of Hemiptera: Heteroptera in the collection of the British Museum. British Museum, London, Part 2: 241-417.
- Wall, R. E. 1928.** A comparative study of a chalcid egg parasite in three species of Plataspidae. *Lingnan Science Journal* 6(3): 231-239.
- Wang, Z.-X., H.-D. Wang, G.-H. Chen, Z.-G. Zi and C.-W. Tong. 1996.** Occurrence and control of *Megacopta cribraria* (Fabricius) on soybean. *Plant Protection* 22(3): 7-9.
- Watanabe, C. 1954.** Discovery of four new species of Telenominae, egg-parasites of pentatomid and plataspid bugs, in Shikoku, Japan (Hymenoptera: Proctotrupoidea). *Transactions of the Shikoku Entomological Society* 4: 17-22.
- Wu, M.-X., and K.-T. Xu. 2002.** Preliminary studies on the pests of green soybean in Fuzhou suburbs. *Wuyi Science Journal* 18(1): 28-33.
- Wu, M.-X., Z.-Q. Wu, and S.-M. Hua. 2006.** A preliminary study on some biological characters of globular stink bug, *Megacopta cribraria* and its two egg parasitoids. *Journal of Fujian Agriculture and Forestry University Natural Science Edition* 35(2): 147-150.
- Xing, G.-N., T.-J. Zhao, and J.-Y. Gai. 2006.** Evaluation of soybean germplasm in resistance to globular stink bug. *Acta Agronomica Sinica* 32(4): 491-496.
- Xing, G.-N., B. Zhou, T.-J. Zhao, D.-Y Yu, H. Xing, H., S.-Y. Chen, and J.-Y. Gai. 2008.** Mapping QTLs of resistance to *Megacopta cribraria* (Fabricius) in soybean. *Acta Agronomica Sinica* 34(3): 361-368.
- Yamagishi, K. 1990.** Notes on *Archiphanurus minor* (Watanabe) (Hymenoptera, Scelionidae). *Esakia* 1990(1): 193-196.

- Yang, W.-I. 1934.** Revision of Chinese Plataspidae. Bulletin of the Fan Memorial Institute of Biology 5(3): 137-236.
- Zhang, S.-M. 1985.** Economic insect fauna of China, Fascicle 31, Hemiptera (1). Science Press; Beijing, China. x + 242 p., 59 pl.
- Zhang, Y.-T, X. -G. Du, M. Dong, and W. Shao. 2003.** A preliminary investigation of egg parasitoids of *Megacopta cribraria* in soybean fields. Entomological Knowledge 40(5): 443-445.
- Zhang, Y.-Z., J. L. Hanula, and J.-H. Sun. 2008.** Survey for potential insect biological control agents of *Ligustrum sinense* (Scrophulariales: Oleaceae) in China. Florida Entomologist 91(3): 372-382.

Received January 21, 2010; Accepted March 14, 2010.

