

ART. XLVIII. *The characters of two new Dipterous Genera, with Indications of some generic subdivisions and several undescribed species of Dolichopidæ. By A. H. HALIDAY, Esq.*

Fam. TIPULIDÆ.

Sub Fam. CULICIFORMES, Meig.

Sectio **. Proboscis antennis brevior, palpi incurvati. (Meig.)

ORPHNEPHILA.

Oculi fronte confluentes: Ocelli 0.

Antennæ brevissimæ setaceæ basi globosæ, utriusque sexus nudæ.

Tarsi antici elongati.

Alæ incumbentes parallelæ.

Caput subglobosum, oculis reniformibus fronte confluentibus: Ocelli 0. Antennæ capite breviores 11-articulatæ: articulus basalis papilliformis subimmersus; 2^{dus} maximus globosus; 3^{tius} 4^{tus} et 5^{tus} arcte connati quasi unicum magnum ovatum efficientes; reliqui cylindrici tenues, e quibus 6^{tus} brevis subovatus, et 9^{tus} paulo brevior quam cæteri. Hypostoma parvum. Os haustello minimo incumbente, labellis magnis: palpi curvati antennis parum breviores 5-articulati: articulo primo parvo clavato; 2^{do} et 3^{io} majoribus compressis; 5^{to} brevior. Alæ areolis 2 disci internis, viz. intermedia et brachiali anteriore: nervura transversa 2^{dam} et 3^{tiam} postcostales connectens ultra areolarum apicem est sita: nervuræ radiantes ex iisdem simplices: margo costalis alæ haud strictus at inæqualiter sinuatus. Coxæ inter se approximatae nec elongatae. Pedes graciles, tibiis ecalcaratis: Tarsi articulo basali longissimo, 4^{to} brevissimo emarginato, unguibus simplicibus; antici elongati metatarso tibiam superante. Abdomen brevius cylindricum 8-annulatum; segmento anali magno, in mare ventricosum. (TAB. XV, fig. 2—9.) De metamorphosi nil constat.

1. *devia.* TAB. XV, fig. 1.

Long. corp. 2 lin.—Exp. alar. $4\frac{1}{2}$ vel minor.

Caput nigro-fuscum, antennis et oculis nigris, ore fusco-pallido: Thorax rufo-castaneus subnitidus; halteres pallidi: Abdomen antice nigro fuscum,

segmento anali rufo-castaneo: Coxæ et pedes luteo-pallidi, tarsis apice fuscis: Alæ dilute cinereæ nervuris fuscis.

¶ Under the shady banks of rivulets in Holywood, also in the county Galway, October.]

OBS. This genus seems to come near *Macropeza* (which I suppose to have also naked antennæ in both sexes); and again to have some relations with *Ceratopogon*.

Fam. DOLICHOPIDÆ.*

RHAPHIUM. Meig. IV, 32, CXXIV.

1. *macrocerum*. Meig. IV, 29. 3.

¶ Both sexes near Holywood in Downshire.]

2. *caliginosum*. Meig. IV, 29. 4.?

¶ The male ibid.]

MACHÆRIUM.

Antennæ porrectæ articulo 3^{to} subtus exciso supra apice valde elongato lineari, stylo terminali brevioris biarticulato

Oculi disjuncti.

Alæ parallelæ incumbentes.

Frons lata, feminae latior. Antennæ basi approximatae, apice divaricatae, capite longiores; stylo terminali brevi, articulo 1^{mo} minuto ovato, 2^{do} setaceo. Os crassum prominens: Haustellum carnosum labro membranaceo lanceolato utrinque setula suffulto: Mandibulae sub labro extricatae eoque breviores cultratae disjunctae: Maxillae lobo lato trigono acuminato mandibulis brevioris haustelli basin utrinque amplectuntur: Lingua cornea rigida subuliformis: Labella pinguis discreta. (TAB. XV, fig. 11, 12.) Truncus subcylindricus. Alæ parallelæ incumbentes nervurâ 4^{tâ} longitudinali simplici. Pedes mediocres coxis haud insigniter longatis. Abdomen sub-cylindricum mediocre apice conicum, maris gracilius subtus oblique

* I have noticed every species in my cabinet, for the purposes of a local list and to introduce some generic subdivisions.

truncatum, Hypopygio minuto abscondito, stylis 2 minimis subulatis vix emergentibus.

1. *Maritima*. *M. aureo-virens*, antennis nigris, hypostomate niveo, pedibus ferrugineis: (*Mas*) tarsis anterioribus elongatis onychiis productis.

Exp. alarum ♂ . lin. 5† : ♀ . 5½†.

Long. corp. ♂ . 2¼. ♀ . 2½.

Antennæ nigræ: Os nigro-fuscum: Hypostoma et palpi niveo-sericantes: Facies sub antennis glaucescens: Genæ splendide-virides barba candida: Frons aurato-viridis: Oculi rufo-castanei: Thorax læte virens lineis 2 dorsi cupreis, aliis obsoletioribus subcyaneis: Metathorax, pleuræ et coxæ glauco sericantes: Abdomen præsertim in femina magis auratum nigro setosum lateribus glauco pubescens: Halteres lutei: Alæ subhyalinæ radice et alulis dilute ferrugineis nervuris fusco-ferrugineis: Pedes pallide ferruginei nigro-pilosi et setosi, tarsis anticis apice posticis totis et tiliarum vix summo apice nigris: Tarsi anteriores maris onychiis insignibus ut in *Diaphoro*.

¶ ♂ ♀ Taken on the coast near Holywood, in July, 1828.]

DIAPHORUS. Meig. IV, 32, CXXIV.

1. *flavocinctus*. Meig. IV, 33, 1.

¶ [Near Bexley, June.]

PSILOPUS. Meig. IV, 35, CXXV.

1. *platypterus*. Meig. IV, 36, 2.

Fabr. Syst. Antl. 270, 20.

[The wings of the male in repose are divaricate; it is fond of resting in small troops on the shady side of a gate or paling.]

CHRYSOTUS. Meig. IV, 40, CXXVI.

1. *læsus*. Meig. IV, 43, 7.

2. *nigripes*. ————— 6.

3. *femoralis*. ————— 5.

4. *neglectus*. — 41, 1.
 5. *copiosus*. ————— 2.

¶ All these occur about Holywood.]

PORPHYROPS. Meig. IV, 45, CXXVII.

A. *Antennis apice setigeris*, (Mas) *articulo tertio valde elongato setâ brevissimâ*, *Metatarso postico basi subtus uncinato*. Plectropus, *mihi*.

1. *pallipes*. Meig. IV, 55, 23.

Fabr. Syst. Antl. 266, 2.

Varietatem feminae segmento tertio immaculato qualem et ipse vidi Meigen pro genuina habuit.

¶ A common and diffused species.]

var. β. obscure viridi-æneus pedibus ferrugineis, femoribus tibiisque posticis apice nigris, abdomine basi maculis lateralibus flavis, alis obscuris.

I have several males of this variety from the west of Ireland, and none of *var. α.* from the same locality. They may probably be distinct species.

2. *pumilus*. Meig. IV, 53, 17.

¶ A single female near Holywood.]

3. *decoratus*. P. obscure viridi-æneus, pedibus ferrugineis, femoribus tibiisque posticis apice tarsisque nigris, alis cinereis.

Long. corp. $1\frac{2}{3}$.

Frons chalybea nitida : Facies sub antennis cyanea : Hypostoma candidum : Coxæ anticæ pedesque ferruginei, femora anteriora nonnunquam fusco-lineata. Femina major colore obscuriore, pedibus lutescentibus obsoletius infuscatis, a *Rhaphio macrocero* ♀ vix nisi antennarum formâ distinguenda.

¶ Not rare near Holywood in moist meadows among plantations.]

B. *Antennis apice setigeris*, (Mas) *Hypostomate angustissimo lineari*. Perithinus, *mihi*.

4. *riparius*. Meig. IV, 54, 18.

Feminam Meigen descripsit loco laudato.

Mas. Tarsorum anticorum articulo 2^{do} arcuato, 3^{tio} et 4^{to} brevissimis. Antennarum articulo 3^{tio} longiore quam feminae. Frons obscure

viridis: Hypostoma et barba candidæ: Femora nigra anteriora genibus fuscis, postica basi angustius pallida: Tibiæ fusco-ferrugineæ, posticæ apice fuscæ: Tarsi anteriores basi ferruginei: Femora antica dense nigro villosa.

Lamellæ sinuatæ exsertæ, quæ forma Meigenio audit "*flis analibus ♂ furcatis.*"

¶ Not uncommon on the sea-coast at Holywood: I have females also from Richmond Park.]

*Add. Labrum lanceolatum, mandibulis sub eodem brevioribus extricatis: Lingua subuliformis longior: Maxillæ lobo minimo trigono intra basin palporum vix detegendo.

†In omni specie ex hac familia adesse videntur mandibulæ discretæ plerumque cultratæ, sed in pluribus (ex. gr. Generibus *Dolichopo*, *Medetero*, &c.) invicem adpressæ ideoque auctoribus errore acceptæ. Maxillæ stipes linearis rigidus haustelli lateribus est adnatus et lobus vix nisi in Genere *Machario* conspicuus.

5. *insulsus*. P. obscure viridi-æneus, hypostomate aterrimo, antennis pedibusque nigris, tibiis ferrugineis, posticis compressis basi pallide flavis apice clavatis atris. (*Mas.*)

Long. corp. $2\frac{1}{3}$.

Color obscurior quam in præcedente: Abdomen brevius et pedes postici longiores: Frons fere nigra: Hypostoma et barba atræ: Femora omnia atra, postica latiora, coxæ anticæ nigro-villosæ: Tarsi antichi maris simplices apice nigri: Tibiæ posticæ longiores sinuato-compressæ: Lamellæ haud exsertæ.

¶ A single male taken on the coast near Holywood.]

6. *rufipes*. Meig. IV, 52, 14.

¶ Several females ibid.]

7. *obscuratus*. Meig. IV, 55, 21.

¶ A single female ibid.]

C. *Antennarum setâ dorsali ante apicem articuli tertii insertâ.*
Porphyrops.

8. *diaphanus*. Meig. IV, 46, 1.

Fabr. Syst. Antl. 270, 18.

¶ Taken near Holywood, but rare.]

9. *fulgens*. P. argenteo micans, thorace viridi-aureo, abdominis

basi fasciis interruptis flavo-diaphanis, hypostomate nigro.
(*Mas.*)

Long. corp. 2 vel 3 lin.

Antennarum articulus 3^{tus} brevior quam in præcedente: Frons argenteo-micans; Hypostoma et barba nigræ: Thorax viridi-aureus argenteo-micans: Abdomen argenteum nec ut in præcedente nigro-pilosum, segmentum 1^{um} basi viride, 2^{dum} 3^{tum} et plerumque 4^{tum} flavo-diaphana linea dorsali et incisuris nigris argenteo micantibus: Coxæ et femora nigro-fuscæ anteriora apice pallida: Tibiæ pallide ferrugineæ, posticæ apice nigræ: Tarsi postici toti, antici apice, concolores.

Differt a *P. diaphano* etiam alarum nervo 4^{to} vix leniter sinuato, pedibus gracilioribus et filis analibus vix emergentibus.

Confer *P. argyreum*, Meig. IV, 46, 2, hypostomate (atque ut credo etiam barbâ) argenteo; etiam *Muscâ semiargenteam*, Donovan et Turton, pedibus ferrugineis.

¶ Ibid.]

10. *versicolor*. Meig. IV, 50, 9.

¶ The female, ibid. very rare.]

11. *leucocephalus*. Meig. IV, 42, 8.

Segmentum 2^{dum} maculâ laterali flavo-pellucidâ obsoleteiore.

¶ The female ibid.]

12. *vestitus*. Meig. IV, 48, 5.

¶ Two males ibid.]

D. *Antennarum setâ dorsali nudâ prope basin articuli tertii insertâ.*
(Bina Genera?)

13. *annulipes*. Meig. IV, 56, 25.

¶ Common on the coast at Holywood.]

14. *flavicoxa*. Meig. IV, 57, 27.

¶ Near Holywood in moist meadows.]

15. *flaviventris*. Meig. IV, 58, 28.

¶ Ibid.]

MEDETERUS. Meig. IV, 59, CXXVIII.

A. *Femoribus anticis obclavatis subtus spinulosis, coxis elongatis*
Antennarum setâ mediocri vel brevi.

1. *regius*. Meig. IV, 60, 1.

Fabr. Syst. Antl. 267, 5.

¶ I have seen one female taken on the coast near Belfast, and now in the cabinet of Mr. G. C. Hyndman.]

2. *viridis*. Meig. IV, 60, 2.

¶ One male taken in Holywood.]

3. *notatus*. Meig. IV, 62, 6.

Fabr. Syst. Antl. 269, 10.

¶ I have met with this species from June to September, in Cheshire, Cumberland, and about Holywood.]

4. *formosus*. *M. fusco-æneus*, hypostomate aureo, pedibus viridibus geniculis testaceis; antennis tarsisque nigris. (*Femina.*)

Long. corp. vix 3. Exp. alar. $6\frac{1}{2}$.

Hypostoma fuscum aureo versicolor: Palpi nigri: Barba candido-sericea: Thorax fusco-æneus dorso magis virescens, lineis setigeris splendide cupreis: Abdomen viridi-subaureum ad latera tessellato-pubescentia formâ tereti fere ut in *M. regio*: Halteres pallide ferruginei: Alæ hyalinæ radice dilute ferruginæ nervurâ transversâ sinuatâ et 4^{tâ} longitudinali determinate flexuosâ: Pedes nitidi virides tarsis nigris femoribus auratis summo apice et tibiârum basi pallide testaceis.

¶ One female taken in Cheshire, September, 1828.]

5. *bipunctatus*. Meig. IV, 63, 7.

¶ One female on the coast near Holywood, March, 1829.]

6. *conspersus*. *M. fusco-æneus*, hypostomate aureo, femoribus rubineis, alis anticè punctis postice lituris fuscis. (*Mas.*)

Long. corp. $1\frac{2}{3}$.

Frons et vertex atrî cupreo variantes: Thorax fusco-æneus lineis 2 nigricantibus, postice ad latera rubineo splendens: Abdomen longiusculum fusco-cupreum splendore rubineo obductum: Pectus, latera abdominis, postscutellum et coxæ schistaceo-sericatæ: Femora rubinea: Tibiæ æneo-virides: Tarsi nigri: Alæ obscure hyalinæ punctis fusco-ferrugineis serie duplici prope costam plerumque gemellatim dispositis et præterea nebulis dilutius fuscis versus marginem posticum: Nervura 4^{ta} subsinuata puncto solitario distinctiore: Hypopygium absconditum.

¶ A single male on the coast, Holywood, July 1828.)

OBS. Sub *M. nebuloso*, Meig. IV, 9, character specificus augendus

verbis "*hypostomate albido*."

7. *Balticus*. Meig. IV, 66, 12.

¶ On the sea coast, Holywood, March.—August.]

Var. β. alis hyalinis immaculatis.

[Much rarer than the other variety but does not seem to be specifically distinct.]

8. *præcox*. Meig. IV, 64, 8.

[I find this species on the sea-coast so early as March: on fine days about Midsummer a little before high-tide they may be seen in swarms resting lightly on the surface of the waves, and carried on by their advance: numbers of them will be found paired in this situation. I have met with the species also on the banks of the Thames, but always within the range of the tide.]

B. *Femoribus muticis, metatarso postico brevi, Hypopygio maris occulto, Antennarum setâ dorsali longiore. Camptosceles mihi.*

9. *Scambus*. Meig. IV, 68, 18.

Fall. Dol. 19, 26.

Alæ ut in sequente subfuscæ vel nigricantes nec hyalinæ. Maris femora intermedia crassiora subtus ante apicem nigro fasciculata: Tibiæ nigræ pilosæ, sinuato-compressæ et valde dilatatæ: Metatarsus brevissimus articulo 2^{do} elongato sinuato: Femora postica subnuda.

¶ Sea coast and shady groves, Holywood, and in the county Galway.]

10. *curvipes*. Meig. IV, 65, 10.

Fall. Dol. 20, 27.

Maris femora intermedia incrassata subtus angulata densius setosa: Tibiæ ferruginæ et medium usque crassiores apice sinuato nigro: Metatarsus brevissimus articulo 2^{do} longissimo lineari: Femora postica pilosa.

¶ With the preceding, but more abundant.]

11. *loripes*: *M. olivaceus*, alis fuscis, pedibus ferrugineis. (*Mas.*)

tibiis intermediis flexuosis nigris, metatarso brevior.

Long. corp. vix l.

Maris femora intermedia obclavata subtus serie ciliorum medio interruptâ: Tibiæ nigræ vel totæ vel basi ferruginæ vix subtilissime pubescentes, setulis rarioribus erectis, medio constrictæ: Metatarsus brevis

358 Mr. A. H. Haliday's *Descriptions of Dipterous Insects.*

vix crassior; articulo 2^{do} vix 3^{tium} æquante: Femora postica subnuda. Sequenti simillimus.

¶ Sea coast, Holywood, March, 1831.]

12. *Prodromus*. Meig. IV, 64, 9.

(*Mas.*) tibiis intermediis arcuatis intus pectinato-setosis.

Long. corp. vix 1 lin.

Alarum color quam in *M. Scambo* et *curvipede* fere dilutior: Maris femora intermedia obclavata subtus setoso-ciliata: Tibiæ ferrugineæ arcuatæ setulis longioribus rigidis: Metatarsus basi subtus angulatus, haud abbreviatus ut in antecedentibus: Femora postica subnuda.

¶ Most abundant on the sea-coast at Holywood, appearing a little earlier than *M. curvipes*.

C. *Femoribus muticis, metatarso postico brevioris prominulo, Hypopygio inflexo, Thorace ante scutellum deplanato. Tæchobates, mihi.*

13. *Jaculus*. Meig. IV, 66, 14.?

Fall. Dol. 5, 7.

¶ I captured one specimen (of this species as I think) in a sand pit at Erith, but have not preserved it.]

14. *nigricans*. Meig. IV, 67, 16.

[I have specimens from Greenwich Park, apparently of this species, but so ill preserved that I am not confident.]

15: *Truncorum*. Meig. IV, 67, 15.

¶ Common in sunny gravel pits, Holywood, and in the county Galway.

D. *Femoribus muticis, pedibus gracilibus elongatis, metatarso postico longiore. Leptopus, mihi.*

16. *tenellus*. Meig. IV, 69, 21.

¶ In moist meadows, Holywood.]

17. *ornatus*. M. ochraceus, thōrace supra et abdominis vittâ dorsali viridi micantibus.

Long. corp. 1 $\frac{2}{3}$.

¶ Taken in Darent Wood.]

DOLICHOPUS. Meig. IV, 74, CXXX.

* *Lamellis adpressis, filis elongatis arcuatis clavatis apice cirrhosis.*
Hypophyllus, mihi.

1. *obscorellus*. Fall. Dol. 13, 11.

¶ Both sexes taken under the shady banks of rivulets at Holywood, but rare.]

** *Lamellis concavis hiantibus*. Genuini.

A. *Ciliis genarum nigris, Alarum nervo 4^{to} flexuoso.*

2. *ungulatus*. D. viridi-æneus, pedibus rufis, coxis tarsisque nigris, hypostomate candido, antennis atris.

Meig. IV, 80, 13.

Linn. Fauna. 1858.

(*Mas.*) femoribus posticis nigro-villosis.

Long. corp. 3.

¶ Generally diffused and abundant.]

3. *brevipennis*. D. obscure æneo-viridis, antennis basi subtus coxis anticis pedibusque rufis, tarsis apice posticis totis nigris. (*Mas.*) tarsis anticis elongatis articulis 2 ultimis atris compressis, 4^{to} brevi, 5^{to} latissimo, femoribus posticis pallido-villosis.

Meig. IV, 89, 27.

Long. corp. 3.

Alæ fere ut in *D. unguato*. Hypostoma flavo aureum.

¶ Both sexes on the sea-coast near Holywood.]

4. *equestris*. D. viridi-æneus, antennis nigris, hypostomate flavo-aureo, pedibus ferrugineis, tarsis apice posticis totis nigris, alis intus exangulatis.

(*Mas.*) femoribus posticis nigro villosis; tarsis anticis gracillimis, articulo ultimo compresso atro.

Long. corp. 2 $\frac{1}{4}$.

D. unguato similis at duplo minor: Coxæ anticæ nigrae subtus apice ferrugineæ: Tarsi antici quam in *D. brevipennis* longiores et graciliores, articulo ultimo compresso atro et brevior quam 4^{to}; tarsi anteriores basi ferruginei postici toti ut et apex tibiarum nigri: Alæ intus exangulatae ut in *D. acuticorni*.

¶ A single male on the sea-coast, Holywood.]

360 Mr. A. H. Haliday's *Descriptions of Dipterous Insects.*

5. *planitarsis*. D. obscure æneo-viridis, hypostomate candido, antennis femoribus anterioribus pedibusque posticis nigris.

(*Mas.*) femoribus imberbibus, articulo ultimo tarsorum intermediorum clavato atro.

Meig. IV, 81, 25.

Fall. Dol. 12, 8.

Long. corp. $2\frac{1}{3}$.

¶ A single male near Holywood, 1827.]

6. *campestris*. D. fusco-æneus, incisuris abdominis nigris, pedibus nigris, tibiis ferrugineis, alis cinerascens, hypostomate griseo.

Meig. IV, 78, 8.

Long. corp. $2\frac{1}{3}$.

¶ Two females on the sea-coast, Holywood.]

Var. β, obscurior, hypostomate nigro vix sericante.

Long. corp. vix 2.

Confer *D. fuscipodem* infra No. 22 ciliis albis alarum nervo 4^{to} magis flexo.

¶ Ibid. one female.]

7. *atratus*. D. obscure æneus, pedibus nigris, alis latis apice nigricantibus.

(*Mas.*) femoribus imberbibus, metatarso postico hispido.

Meig. IV, 76, 3.

Long. corp. $2\frac{1}{3}$.

¶ Taken near Canterbury in May.]

8. *fastuosus*. D. viridi-cyaneus, antennis pedibus et incisuris nigris, hypostomate candido, alis ad costam infuscatis.

(*Mas.*) femoribus imberbibus, alis postice latius excisis.

Long. corp. 3.

Pedes longissimi, metatarsus posticus in ♂ haud hispidus: Alæ solito ongiores postice fere per totam longitudinem æqualiter angustatæ: Halteres pallidi; Lamellæ albidæ nigro marginatæ.

Confer *D. cyaneum*, Meig. IV, 78, 9, alis in ♂ rotundatis; etiam *D. picipodem*, Ibid. 76, 4, metatarso postico hispido.

¶ One male near Holywood, 1827.]

B. *Ciliis genarum pallidis.*

a. *Lamellis maris pallidis.*

9. *nitidus*. *D.* æneo-viridis, hypostomate flavo, antennis basi subtus rufis, pedibus pallide ferrugineis tarsis nigris, alarum nervo 4^{to} rectangulatim fracto; (*Mas.*) femoribus posticis fusco-villosis.

Fall. Dol. 12: 9.

Long. corp. $2\frac{3}{4}$.

Coxæ anticæ griseæ apice pallidæ; villi femorum in ♂ rariores quam in *D. ungulato*. Alæ obscure hyalinæ in ♂ ♀ similes nisi quod in illo adsit lineola parva costalis minus conspicua quam in sequente.

N. B. *D. nitidus*, Meig. IV, 80, 12, alia species antennis nigris coxis anticis ferrugineis.

¶ Not uncommon on the sea coast, Hollywood.]

10. *festivus*. *D.* aureo-viridis, antennis rufis apice nigris, coxis anticis et pedibus pallidis, alis latissimis nervo 4^{to} subangulato.

(*Mas*) femoribus posticis pallido villosis.

Long. corp. 3.

Hypostoma flavescens aut argenteum: Palpi straminei: Coxæ pallidæ posteriores basi nigricantes: Tarsi anteriores subgraciles, maris paulo longiores metatarso pallido apice nigro, postici toti nigri ut et apex tiliarum: Alæ utriusque sexus latissimæ nervo transverso subarcuato, 4^{to} plus minus subangulato, dilute cinereæ, maris lineola costali atra.

D. nitido Fall. similis at colore lætiore, &c. distinguendus.

¶ Sea coast, Hollywood, rare.]

11. *Diadema*. *D.* obscure æneus, antennis nigris, hypostomate producto argenteo, pedibus fusco-pallidis, alarum nervo 4^{to} rectangulatim fracto.

(*Mas*) alis hyalinis, femoribus imberbibus, tarsis anticis subcrassioribus.

Long. corp. $2\frac{1}{2}$.

Hypostoma super os productum niveo-argenteum, altero situ cum palpis stramineum: Thorax æneo et fusco lineatus ad latera cinereus: Abdomen cinereo tessellatum lineâ dorsali et incisuris nigris: Lamellæ albæ margine parcius nigro ciliatæ: Pedes obscure lutescentes: Coxæ basi fuscae apice pallidæ anteriores albo sericantes: Femora plerumque fusco tincta: Tarsi anteriores basi lutescentes, antici crassiusculi breviores quam in *D.*

nitido, Fallen. Alæ maris hyalinæ angustiores quam in illo, feminae versus costam cinereæ; margo posticus ad nervum 5^{tum} acute incisus.

• A *D. nitido*, Meig. differre videtur colore obscuriore hypostomate et coxis.

¶ Very common on the sea coast at Holywood.]

12. *popularis*. D. æneo-viridis, hypostomate flavo, antennis rufis apice nigris, coxis anticis pedibusque rufis.

(*Mas*) tarsi intermediis articulis 3^{tio} et 4^{to} brevibus dilatatis ciliatis atris, ultimo minuto candido, alis postice sinuatis.

Fall. Dol. 11, 7.

Meig. IV, 91, 30.

Long. corp. 2 $\frac{3}{4}$.

Tarsi antici apice postici fere toti nigri: Hypostoma feminae albidum: Alæ obscure hyalinæ: Femora maris imberbia.

¶ Not rare about Holywood.]

13. *pennatus*. D. æneo-viridis, hypostomate flavo, antennis nigris basi rufis, coxis anticis pedibusque rufis, tibiis posticis apice tarsisque nigris.

(*Mas*) tarsi intermediis articulis 2^{do} et 3^{tio} brevibus dilatatis ciliatis atris, tibiis posticis crassioribus prope basin intus variolosis, alis postice sinuatis.

Meig. IV, 90, 28.

Long. corp. 2 $\frac{3}{4}$.

Alæ maris paulo angustiores quam in præcedente: Femora imberbia: Hypostoma feminae albidum.

¶ ♂ ♀ Holywood, 1827.]

14. *urbanus*. D. æneo-viridis, hypostomate candido, antennis rufis apice nigris, coxis anticis et pedibus rufis, tarsi nigris.

(*Mas*) tarsi intermediis basi rufis articulis 2^{do} 3^{tio} et 4^{to} nigris, ultimo albo, alis postice sinuatis.

Meig. IV, 92, 31.

Long. corp. 2 $\frac{1}{2}$.

In meo specimine alæ magis coloratæ quam in præcedentibus, femora maris imberbia.

¶ ♂ Holywood, 1827.]

15. *pennitarsis*. D. æneo-viridis, hypostomate aureo, antennis rufis

apice nigris, coxis anticis et pedibus ferrugineis, tibiis posticis apice tarsisque nigris anticis basi pallidis.

(*Mas*) metatarso intermedio late pennato atro, alis hyalinis postice sinuatis.

Fall. Dol. 11, 6.

Meig. IV, 90, 29.

Long. corp. $2\frac{1}{3}\frac{1}{4}$

Maris cilia straminea: Femora imberbia: Hypostoma feminae argenteum.

Var. Minor alis brevioribus latioribus postice minus emarginatis.

Var. pedibus et coxis anticis pallidioribus tarsis anticis vix apice fuscis, posticis ad basin et apice tibiaram pallidis.

Var. metatarso intermedio angustius ciliato.

¶ A common and diffused species.]

16. *acuticornis*. D. aeneo-viridis, antennis acutis flavis apice nigris, coxis anticis et pedibus pallidis, tarsis posticis nigris, alis intus exangulatis.

(*Mas*) antennis elongatis, femoribus imberbibus.

Fall. Dol. 12, 10.

Meig. IV, 94, 34.

Long. corp. 2.

Antennae feminae acutae sed vix elongatae: Alae hyalinae.

¶ ♂ ♀ near Holywood, rare]

17. *thalassinus*. D. laete viridis, antennis rufis apice nigris, coxis anticis pedibusque pallide ferrugineis tarsis nigris, alis latioribus intus fere exangulatis.

(*Mas*) femoribus imberbibus, hypostomate flavo.

Long. corp. $2\frac{1}{2}$.

Tarsi antici graciles simplices metatarso pallido apice nigro, metatarsus intermedius vel totus niger vel basi pallidus: Feminae hypostoma argenteum et antennae fere totae rufae etiam coxae omnes in illa ferrugineae posterioribus tantum basi infuscatis: Alae obscure hyalinae intus subrotundatae nec incisae ad nervum 5^{um}, lineola costalis in ♂ omnino nulla.

¶ Holywood: and Bexley (in Kent).]

18. *trivialis*. D. viridi-aeneus, hypostomate flavo, antennis basi subtus rufis, coxis anticis et pedibus ferrugineis, tarsis nigris anterioribus basi ferrugineis.

(*Mas*) tarsis anticis articulis 2^{do} et 3^{tio} subtus concavis, femoribus posticis pallido villosis.

Long. corp. $2\frac{1}{4}$.

Statura et fere color *D. unguлатi*, at abdominis incisuræ vix nigræ: Alæ paulo latiores obscure hyalinæ, ♂ lineolâ costali ut in illo brevissimâ, ad nervum 5^{um} haud incisæ ut in *D. festivo*: Tarsi antichi breviores quam in præcedente: Femora immaculata: Femina antennis tantum apice nigris, alis dilute fusco hyalinis, hypostomate albicante.

¶ Not uncommon near Holywood.]

19. *inquinatus*. *D.* obscure viridis, hypostomate candido, antennis nigris, pedibus luteis, femoribus tibiisque posticis apice tarsisque nigris, alis extus ad costam fuscis.

(*Mas*.) femoribus imberbibus.

Long. corp. $2\frac{1}{4}$.

Hypostoma feminae albidum: Lamellæ maris lutescentes: Femora postica apice summo infuscata: Nervus 4^{tus} alarum magis determinate flexus quam in præcedentibus: Coxæ anticæ cinereæ in ♀ apice latius lutescentes: Abdominis incisuræ nigricantes.

¶ Common on the sea coast, Holywood.]

20. *Actæus*. *D.* nigro-viridis, antennis nigris, hypostomate candido, coxis anticis et pedibus pallide luteis, femoribus tibiisque posticis apice tarsisque nigris, alis nigricanti hyalinis immaculatis.

(*Mas*) nervis alarum tenuissimis, femoribus imberbibus.

Long. corp. 2.

Abdominis incisuræ nigricantes: Coxæ anticæ, albo sericantes: Lamellæ ♂ albidæ tenuiter nigro-marginatæ pilis nullis longioribus: Hypostoma ♂ candidum, ♀ albidum: Alæ extus latiores at vix postice sinuatæ nervo 4^{to} determinate flexo, lineolâ nullâ costali: Femora sæpius immaculata in ♀.

¶ Sea coast, Holywood, not rare.]

21. *vitripennis*. *D.* obscure æneus, hypostomate candido, antennis pedibusque nigris tibiis ferrugineis, alis hyalinis extus latioribus

(*Mas*) alis intus subsinuatis, femoribus imberbibus.

Meig. IV, 78, 7.

Long. corp. 2.

Thorax cinereo lineatus: Abdomen ad latera cinerascens incisuris

nigris: Tarsi anteriores basi ferruginei: Tibiæ posticæ apice nigræ: Lamellæ maris albæ nigro marginatæ.

Var. viridi-cyaneus nitidus abdomine æneo.

¶ Common on the sea coast, Holywood.]

22. *fuscipes*. D. obscure æneus, hypostomate albo, antennis pedibusque nigris tibiis ferrugineis, alis obscuris (*femina*.)

Long. corp. $2\frac{1}{4}$.

Præcedenti similis sed alæ obscuriores nec dilatatæ: Coxæ apice trochanteres genua tibiæ tarsi anteriores basi et plaga longitudinalis femorum posticorum ferruginei; Tibiæ posticæ apice nigræ: *Mas* incognitus.

¶ Ibid. two females.]

23. *clavipes*. D. obscure æneus, hypostomate candido, antennis pedibusque nigris, tibiis ferrugineis (*Mas*) posticis clavatis compressis sulcatis vix basi ferrugineis, femoribus albido-villosis.

Long. corp. vix 2.

Alæ quam in *D. vitripenni* angustiores nec sinuatæ subhyalinæ: Tarsi antici quam in illo breviores: Femora postica crassiuscula villis longioribus albidis: Coxæ ad apicem trochanteres tibiæ et basis tarsorum anticorum ferruginei: Abdomen incisuris vix nigricantibus: Lamellæ ♂ albidæ nigro marginatæ.

¶ One male, ibid.]

b. *Lamellis maris nigris.*

24. *plumipes*. D. thorace ferrugineo, abdomine olivaceo, articulis 4 ultimis tarsorum anticorum brevibus in mare dilatatis nigris, antennis nigris basi rufis.

Meig. IV, 87, 23.

Fall. Dol. 14, 13.

Long. corp. $2\frac{1}{2}$.

In meo specimine maris metatarsus anticus niger apice nonnihil dilatatus (num diversa? tamen notæ reliquæ optime conveniunt.)

¶ Holywood, 1827.]

C. Nervo 4to alarum subrecto; Ciliis genarum nigris rarioribus. (Femora ♂ omnibus imberbia.)

25. *cupreus*. *D.* obscure cupreus, hypostomate albo, antennis pedibusque nigris, tibiis ferrugineis, alis fuscis.

(*Mas*) lamellis nigris.

Meig. IV, 98, 42.

Fall. Dol. 15, 15.

Long. corp. 2.

¶ A common and generally diffused species.]

26. *Sarus*. *D.* obscure viridi-æneus, capite albido, pedibus lutescentibus tarsis apice nigris, alis cinereis, antennarum setâ pubescente.

(*Mas*) lineolâ costali nigrâ, lamellis fusco-luteis.

Long. corp. vix 2.

Antennæ nigræ: Frons et hypostoma albidæ: Thorax absque lineis versicoloribus: Halteres pallidi: Alæ maris angustiores quam feminæ, lineolâ costali brevi crassâ nervum 1^{um} subcostalem haud attingente: Coxæ nigro-cinereæ; Femora antica et apex posticorum supra infuscata: Metatarsus posticus brevissimus.

¶ A pair near Holywood.]

Confer *D. celerem*, Meig. IV, 84, 18, et *vividum*, 100, 48.

27. *ærosus*. *D.* obscure æneo-viridis, antennis nigris, pedibus ferrugineis coxis nigricantibus, hypostomate (*mas*) nigro aut (*femina*) albido.

Meig. IV, 98, 43.

Long. corp. 1—1½.

Lamellæ maris nigræ, femora postica supra sæpius fusca.

¶ Common and generally diffused.]

28. *nigripennis*. *D.* obscure æneus, coxis pedibusque nigris, tibiis anterioribus rufescentibus, alis fuscis.

Meig. IV, 102, 52.

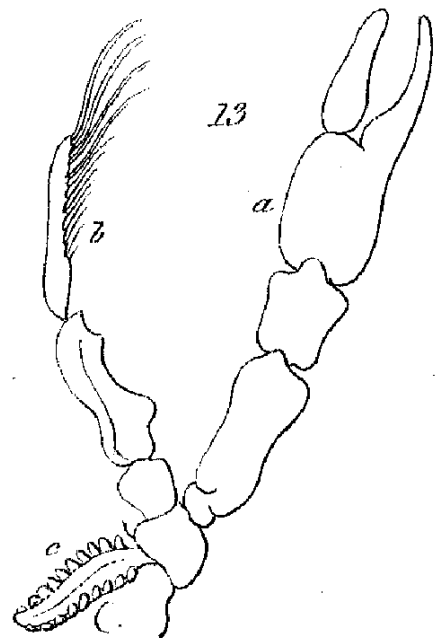
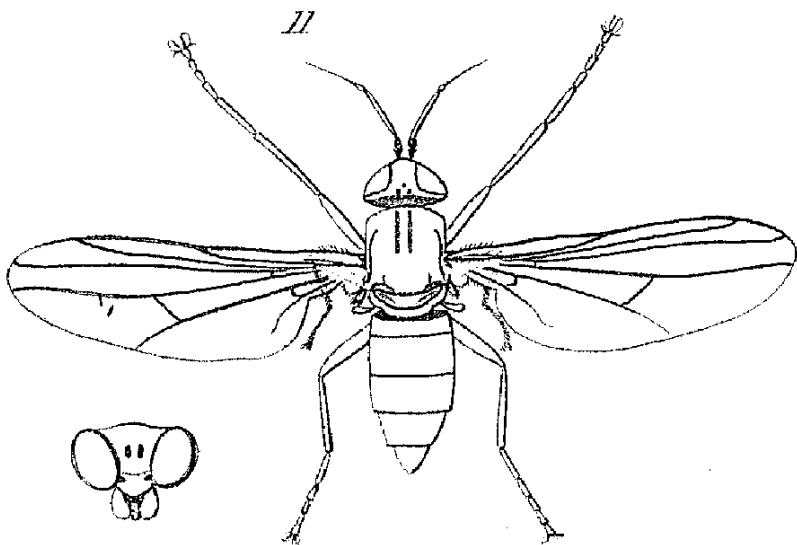
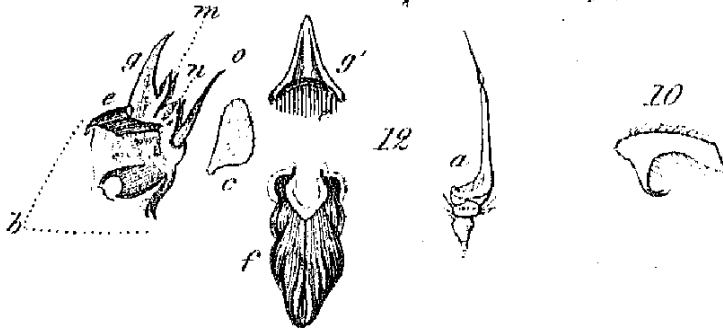
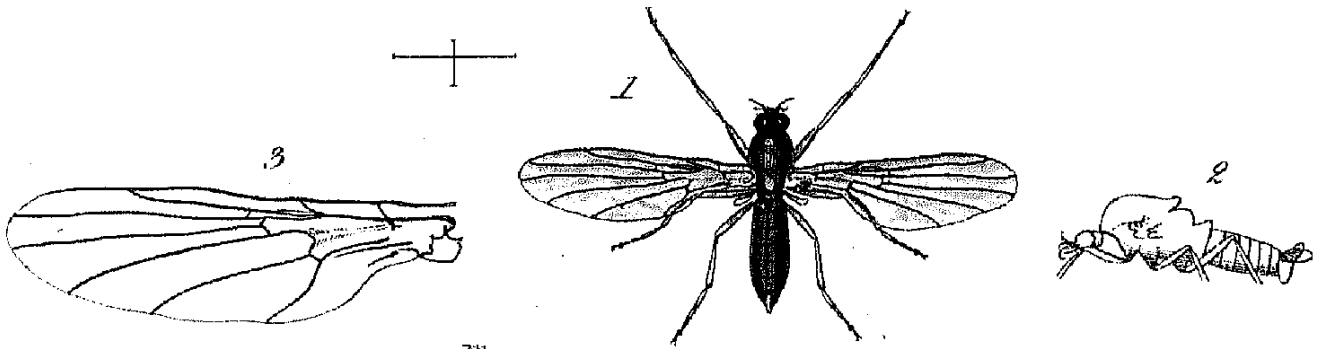
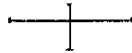
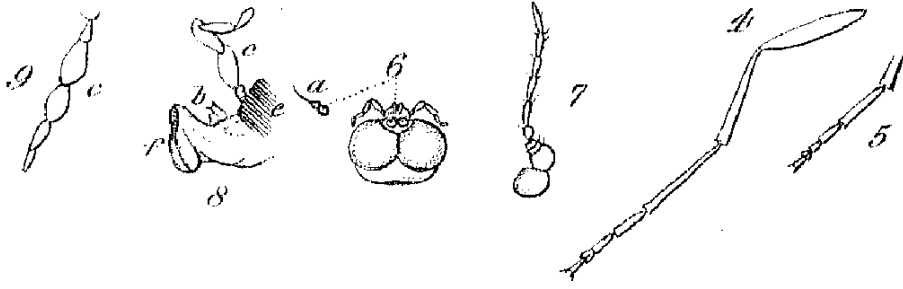
Fall. Dol. 15, 16.

Long. corp. 1½.

Lamellæ maris nigræ. Os rostriforme productum et brevius quam in *Orthochile nigrocærulea*.

¶ A rather common and generally diffused species.]

* I have yet another species of this section from the west of Ireland: it is larger than *D. ærosus*, with pale lamellæ, but I have not yet sufficiently investigated its characters.



ORTHOCHILE. Meig. IV, 103, CXXXI.

1. *nigrocœrulea*. Meig. IV, 103, 1.

Latr. Gen. Crust., &c. IV, 289.

Long. corp. $1\frac{1}{4}$.

¶ I found both sexes near Bexley in June.]

References to the Figures. TAB. XV.

1. *Orphnephila devia* ♀.
2. Side view of the body.
3. A wing.
4. Forefoot.
5. Hind *tarsus*.
6. The head; the *antennæ* being removed, except the basal joint.
7. The *antenna* without the radical joint.
- 8 and 9. The *trophi*.
10. Hind *metatarsus* of *Plectropus*.
- 11 and 12. *Machærium Maritimæ*.

{
a. *antenna*.
c. *clypeus*.
b. *haustellum*.
g. *labrum*.
m. *mandible*.
n. *maxilla*.
o. *Tongue*.
f. *labella*.
c. *Maxillary palpus*.