

Universitätsbibliothek
Johann Christian Senckenberg
Frankfurt/Main
Handschriftenabteilung

Nachlass Ludwig Börne

Briefe von Ludwig Börne an Jeanette Wohl

Nachl.L.Börne BVIII, Nr. _____, Bl. _____

„Billets“ von Ludwig Börne an Jeanette Wohl

Nachl.L.Börne BXI, Nr. _____, Bl. _____

Briefe von Jeanette Wohl an Ludwig Börne

Nachl.L.Börne BIX, Nr. 696, Bl. 53-54

Handwritten notes in the top left corner.

Handwritten notes in the top middle section.

Handwritten notes in the top right corner.

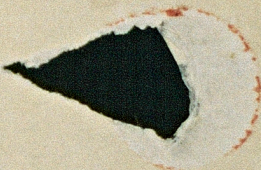
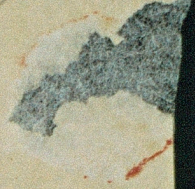
Handwritten notes in the middle right section.

Handwritten notes in the middle left section.

Handwritten notes in the middle middle section.

Handwritten notes in the middle right section.

Handwritten notes in the bottom right corner.



[Faint, illegible handwritten text or markings in the center of the page.]

ffurt 30 Dec - 1821.

Herrn Dr. Böne

bei Herrn Küngs Hofen Nr. 11
Mue-Josaff. Platz



~~München~~

Handwritten signature or initials.



Fragment of handwritten text from the reverse side of the paper, including words like "ne", "Co", "nieder", "mit", "auf", "bis", "mit", "nach", "für", "für", "kan", "Dun", "sach", "mit", "ver", "mit", "mu", "sch", "dign", "jüng", "gott", "ne", "me", "zu", "mit", "Wit", "auf", "si", "me", "un", "Dre", "Wit", "un", "für", "ff", "m".