

Mün H_o 1488

Erzotto Secondo

Stadt- und
Frankfurt a. Main

No. 1.

Fagotto Secondo.

Allegretto

ppp

mf

ppp *mf*

ppp

ppp

No. 2.

Andante

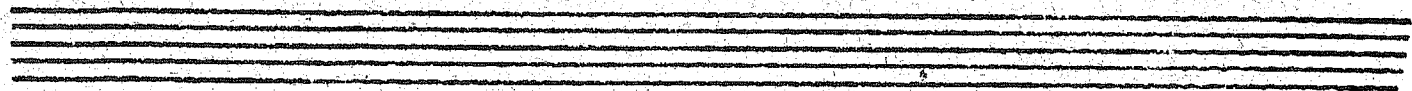
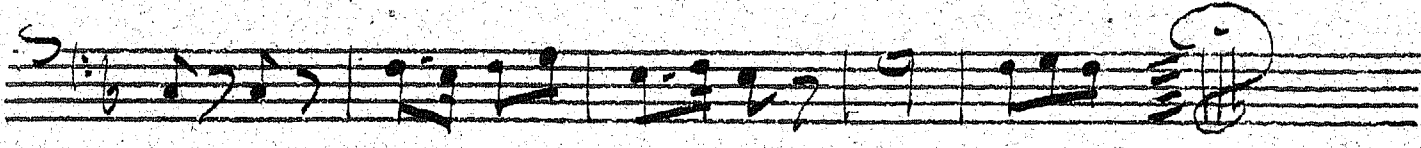
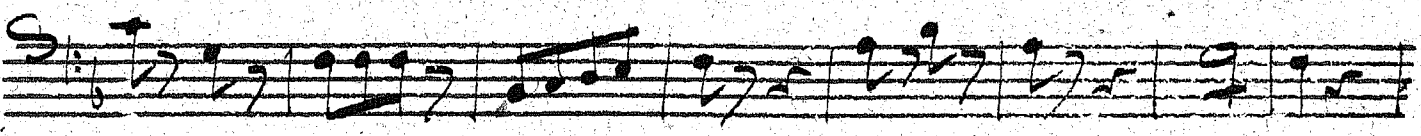
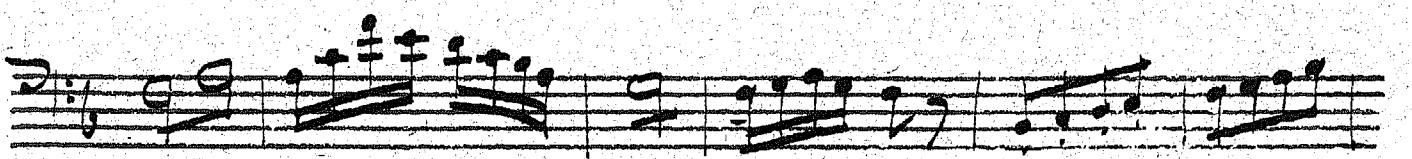
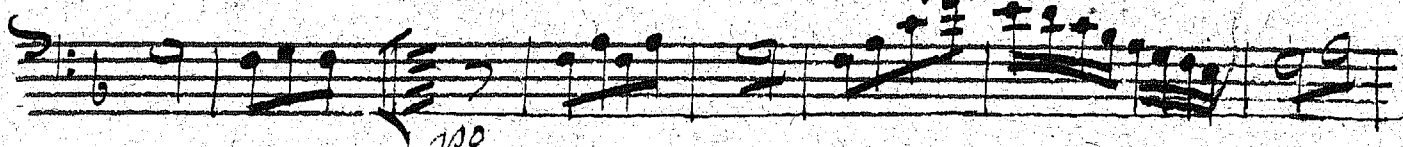
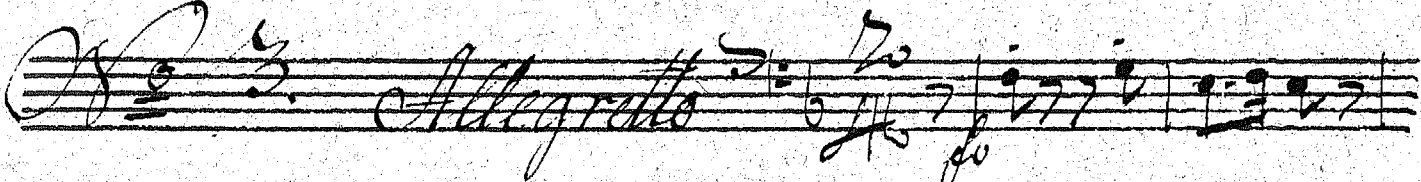
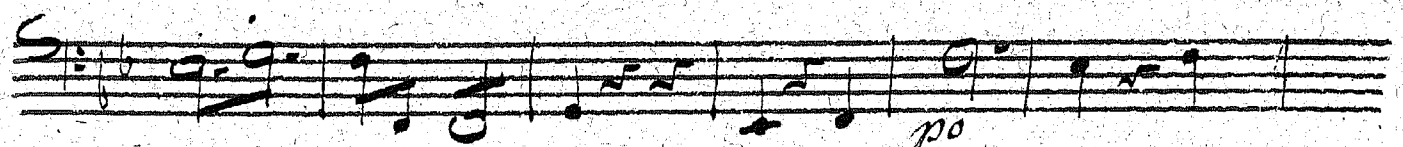
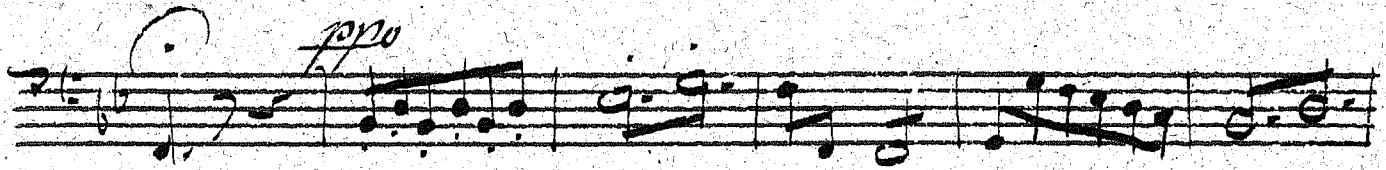
Maestoso

ppp

ppp

ppp

ppp *ppp*



No. 4.

Allargretto

ppp

Allargo

ppp

Handwritten musical notation on a single staff. The notation includes a treble clef, a key signature of one flat (B-flat), and a 6/8 time signature. The music features a series of eighth notes followed by a half note. The word "Solo" is written below the staff.

Handwritten musical notation on a single staff. The notation includes a treble clef, a key signature of one flat, and a 6/8 time signature. The music features a series of eighth notes followed by a half note. The dynamic markings "p", "f", and "ppp" are written below the staff.

Handwritten musical notation on a single staff, consisting of a large, stylized flourish or signature.

Handwritten musical notation on a single staff. The notation includes a treble clef, a key signature of one flat, and a 6/8 time signature. The tempo markings "Allegretto" and "Moderato" are written above the staff. The music features a series of eighth notes followed by a half note. The dynamic marking "p" is written below the staff.

Handwritten musical notation on a single staff. The notation includes a treble clef, a key signature of one flat, and a 6/8 time signature. The music features a series of eighth notes followed by a half note. The dynamic marking "ppp" is written below the staff.

Handwritten musical notation on a single staff. The notation includes a treble clef, a key signature of one flat, and a 6/8 time signature. The music features a series of eighth notes followed by a half note. The dynamic marking "ppp" is written below the staff.

Handwritten musical notation on a single staff. The notation includes a treble clef, a key signature of one flat, and a 6/8 time signature. The music features a series of eighth notes followed by a half note. The dynamic marking "ppp" is written below the staff.

Handwritten musical notation on a single staff. The notation includes a treble clef, a key signature of one flat, and a 6/8 time signature. The music features a series of eighth notes followed by a half note. The dynamic markings "p" and "ppp" are written below the staff.

Handwritten musical notation on a single staff. The notation includes a treble clef, a key signature of one flat, and a 6/8 time signature. The music features a series of eighth notes followed by a half note. The dynamic marking "ppp" is written below the staff.

Handwritten musical notation on a single staff, consisting of a large, stylized flourish or signature.

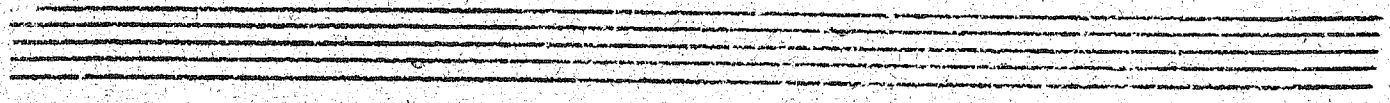
Handwritten musical notation on a single staff, consisting of a large, stylized flourish or signature.

No. 7

Andante

No. 8

Allegro Moderato



No. 9.

Andante

No 10.

Andantino

1

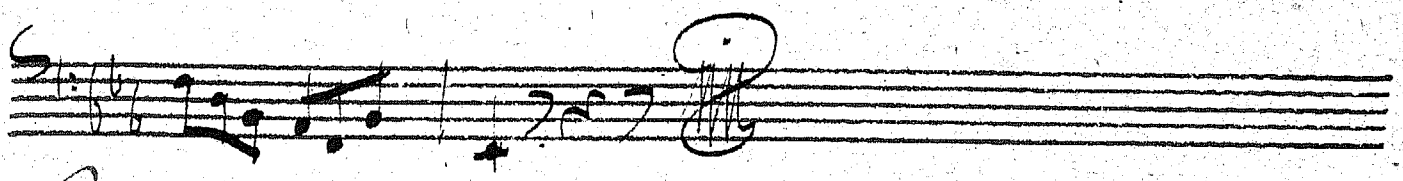
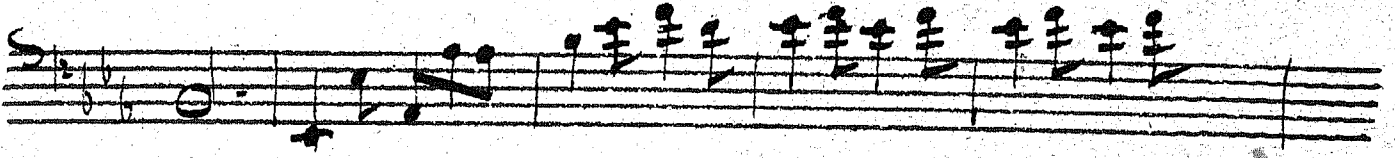
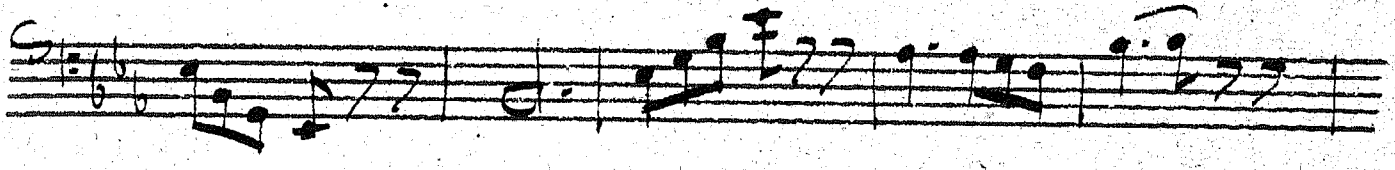
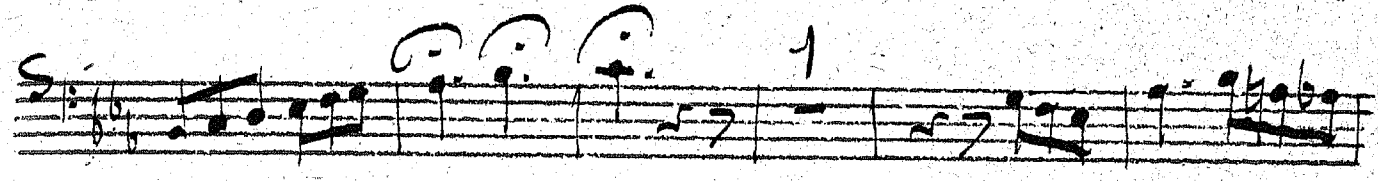
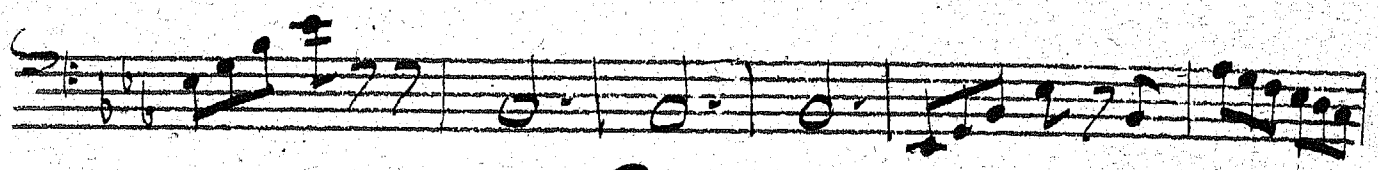
mp

mf

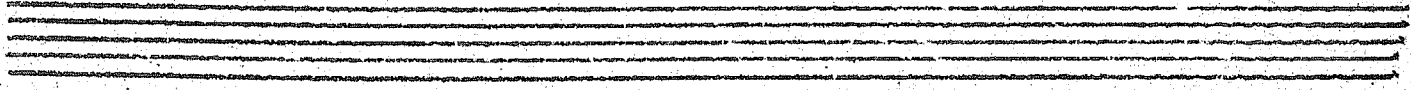
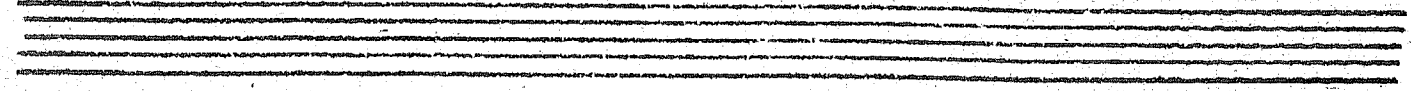
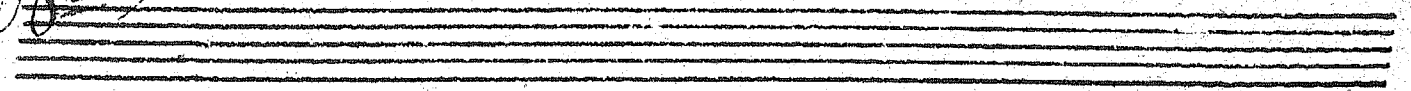
No 11.

Allegretto

1



Handwritten initials or signature.



No 12.

Allegro

Adagio *à Tempo*

No 13.

Allegretto

Handwritten musical notation on two staves. The first staff contains a melodic line with notes and rests, marked with *ppp* above it. The second staff contains a bass line with notes and rests, marked with *fo* below it. Both staves end with a double bar line and a fermata-like flourish.

Ten sets of empty musical staves, each consisting of five horizontal lines, arranged vertically down the page.

[Illegible text block]

[Illegible text block]

[Illegible text block]

[Illegible text block]

[Illegible text block]

[Illegible text block]

[Illegible text block]

[Illegible text block]

[Illegible text block]

[Illegible text block]

[Illegible text block]