

Mus No 1488

*CD*  
*Corno Secondo*

Stark & Co. Inc.  
Frankfurt a. M.

No. 1. Coro Secondo in B. Basso

Allegretto 2/4 *p*

Musical staff with notes and dynamics.

Musical staff with notes, dynamics *mp*, and fingerings 1 and 2.

Musical staff with notes and dynamics.

Musical staff with notes, dynamics *p* and *f*.

Musical staff with notes, dynamics *mf*, and a decorative flourish.

Two empty musical staves.

Andte Maestoso 3/6 *f*

Musical staff with notes and dynamics *p*.

Musical staff with notes and dynamics.

Musical staff with notes, dynamics, and fingerings 1 and 6.

Handwritten musical notation on a single staff. The music begins with a treble clef and a key signature of one flat. The first measure is marked *ppp* and the second measure is marked *f*. The notation includes eighth and sixteenth notes with stems. The staff ends with a double bar line and a repeat sign.

Handwritten musical notation on a single staff, mostly illegible due to the style of the handwriting.

*Allegretto*  $\text{♩} = 70$

Handwritten musical notation on a single staff. The tempo marking is *Allegretto* with a tempo of  $\text{♩} = 70$ . The music starts with a treble clef and a key signature of one flat. The first measure is marked *f*. The notation includes eighth and sixteenth notes.

Handwritten musical notation on a single staff. The music begins with a treble clef and a key signature of one flat. The first measure is marked *ppp*. The notation includes eighth and sixteenth notes.

Handwritten musical notation on a single staff. The music begins with a treble clef and a key signature of one flat. The notation includes eighth and sixteenth notes.

Handwritten musical notation on a single staff. The music begins with a treble clef and a key signature of one flat. The first measure is marked *ppp*. Fingerings *1*, *3*, and *1* are indicated above the first three notes. The notation includes eighth and sixteenth notes.

Handwritten musical notation on a single staff. The music begins with a treble clef and a key signature of one flat. The first measure is marked *f*. A fingering *1* is indicated above the first note. The notation includes eighth and sixteenth notes.

Handwritten musical notation on a single staff. The music begins with a treble clef and a key signature of one flat. The notation includes eighth and sixteenth notes.

Empty musical staff.

Empty musical staff.

Empty musical staff.

No 1. in B<sub>3</sub>

*Allegretto* & C

ppp f 6

No 2 in B<sub>3</sub>

*Allegro* & C

15 2. 4

No 3 in F

*Allegro moderato* & C

pp 2.

1 *ppp* 2 *ppp*

Handwritten musical notation on a single staff. It begins with a treble clef and a key signature of one sharp (F#). The music consists of a series of notes, some with accidentals. Above the staff, there are markings '1' and '2' with arrows pointing to specific notes. Dynamic markings include *ppp* (pianissimo) and *pp* (piano). The staff ends with a double bar line and a fermata.

Handwritten musical notation on a single staff, appearing to be a continuation or a related piece of music, possibly in a different clef or key signature.

*Andante* 1 2 3 4 *ppp*

Handwritten musical notation on a single staff. It starts with the tempo marking *Andante* and a key signature of one sharp. The music features a series of notes with fingerings 1, 2, 3, and 4 indicated above. A dynamic marking of *ppp* is present. The staff concludes with a double bar line and a fermata.

*ppp*

Handwritten musical notation on a single staff. It begins with a treble clef and a key signature of one sharp. The music consists of a series of notes. A dynamic marking of *ppp* is written below the staff.

Handwritten musical notation on a single staff, continuing the musical piece with a series of notes and a fermata at the end.

Handwritten musical notation on a single staff, showing a different melodic line or accompaniment.

*Allegro*  
*Moderato* *ppp*

Handwritten musical notation on a single staff. It starts with the tempo marking *Allegro* and a key signature of one sharp. Below the staff, the tempo is marked *Moderato*. The music consists of a series of notes. A dynamic marking of *ppp* is written below the staff.

3. *ff*

Handwritten musical notation on a single staff. It begins with a treble clef and a key signature of one sharp. The music consists of a series of notes. A dynamic marking of *ff* (fortissimo) is written below the staff.

2.

Handwritten musical notation on a single staff. It begins with a treble clef and a key signature of one sharp. The music consists of a series of notes. A marking '2.' is written above the staff.

2. *ppp*

Handwritten musical notation on a single staff. It begins with a treble clef and a key signature of one sharp. The music consists of a series of notes. A dynamic marking of *ppp* is written below the staff. The staff ends with a double bar line and a fermata.

Two empty musical staves at the bottom of the page.



No 9. in B.

Andte

3. 2

2

ppp 1

f 3. ppp

f 5

No 10 in G.

Andantissimo

4

ppp

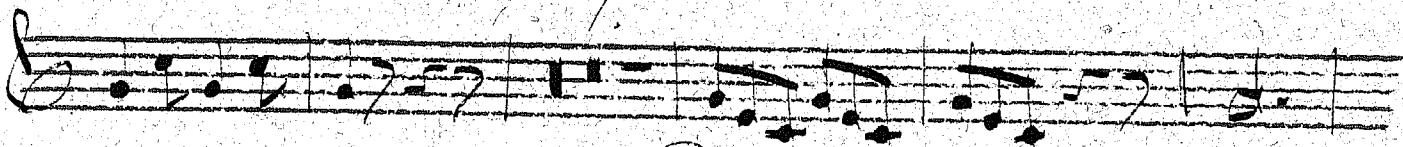
f ppp

No 11 in E.

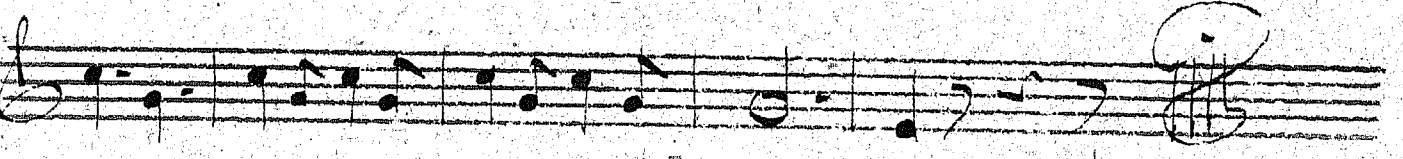
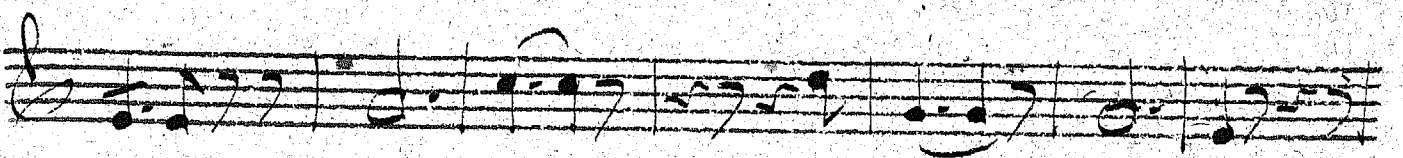
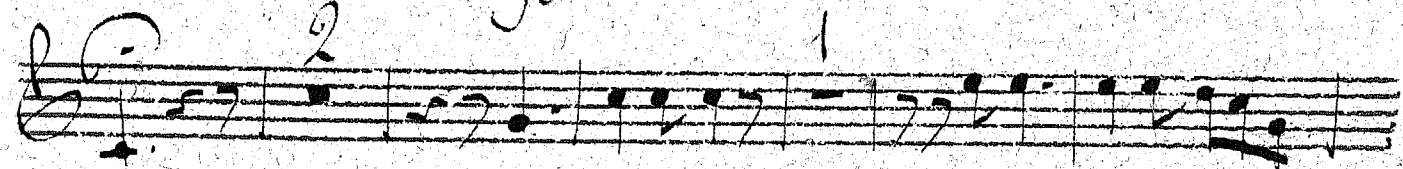
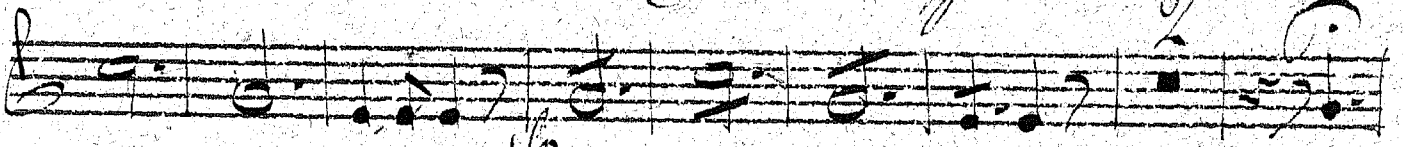
Allagretto

6

7

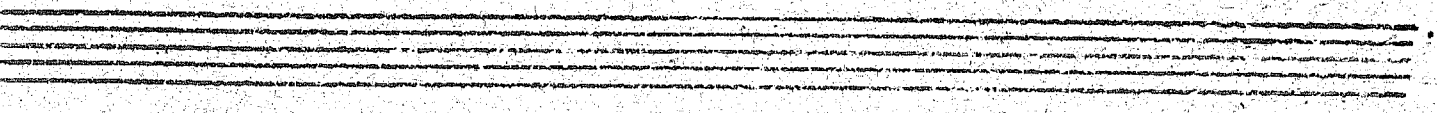
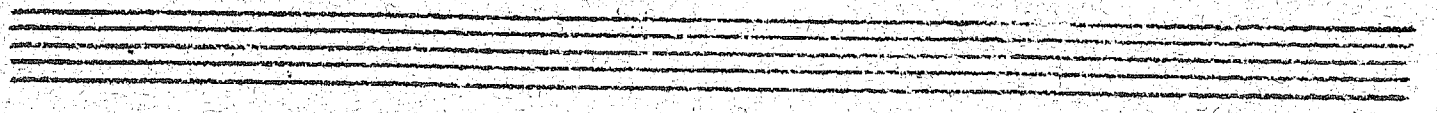
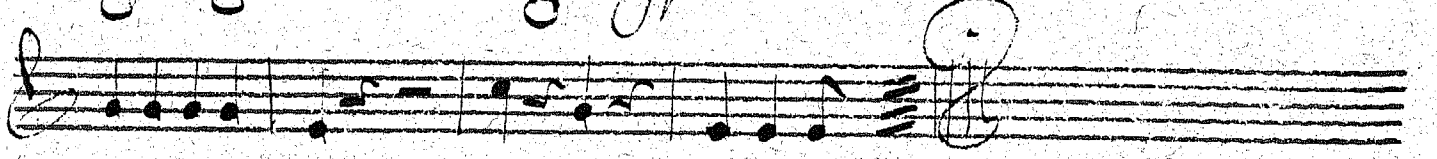
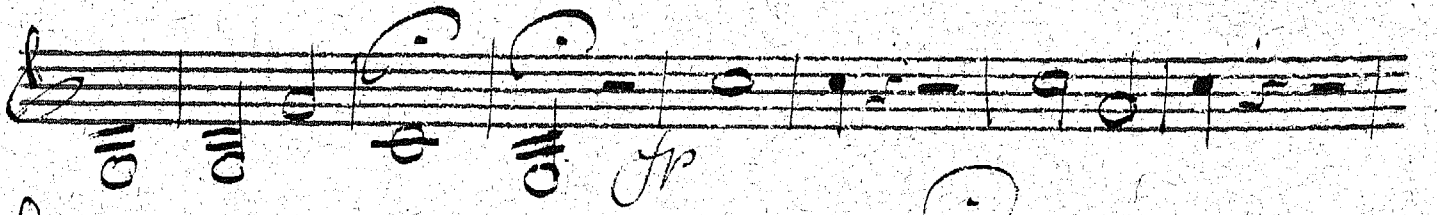


*Dettes. ppo*

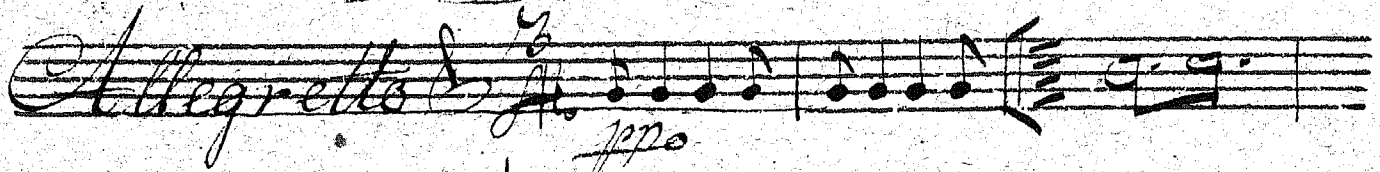


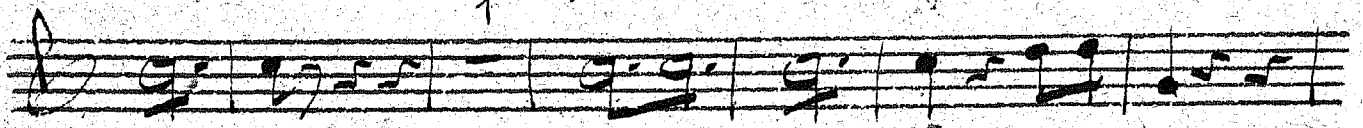
*No 12 in B.*

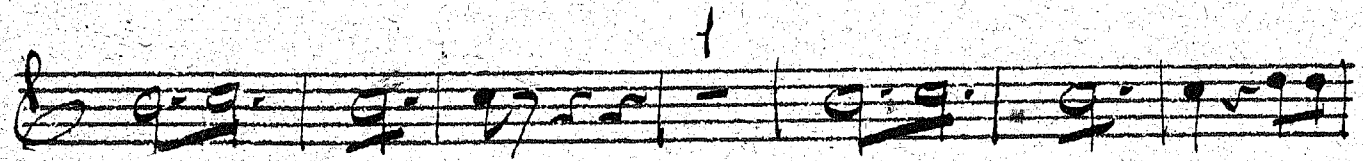
*Allegro*



No 13. in E.

*Allegretto* 





*B.* 