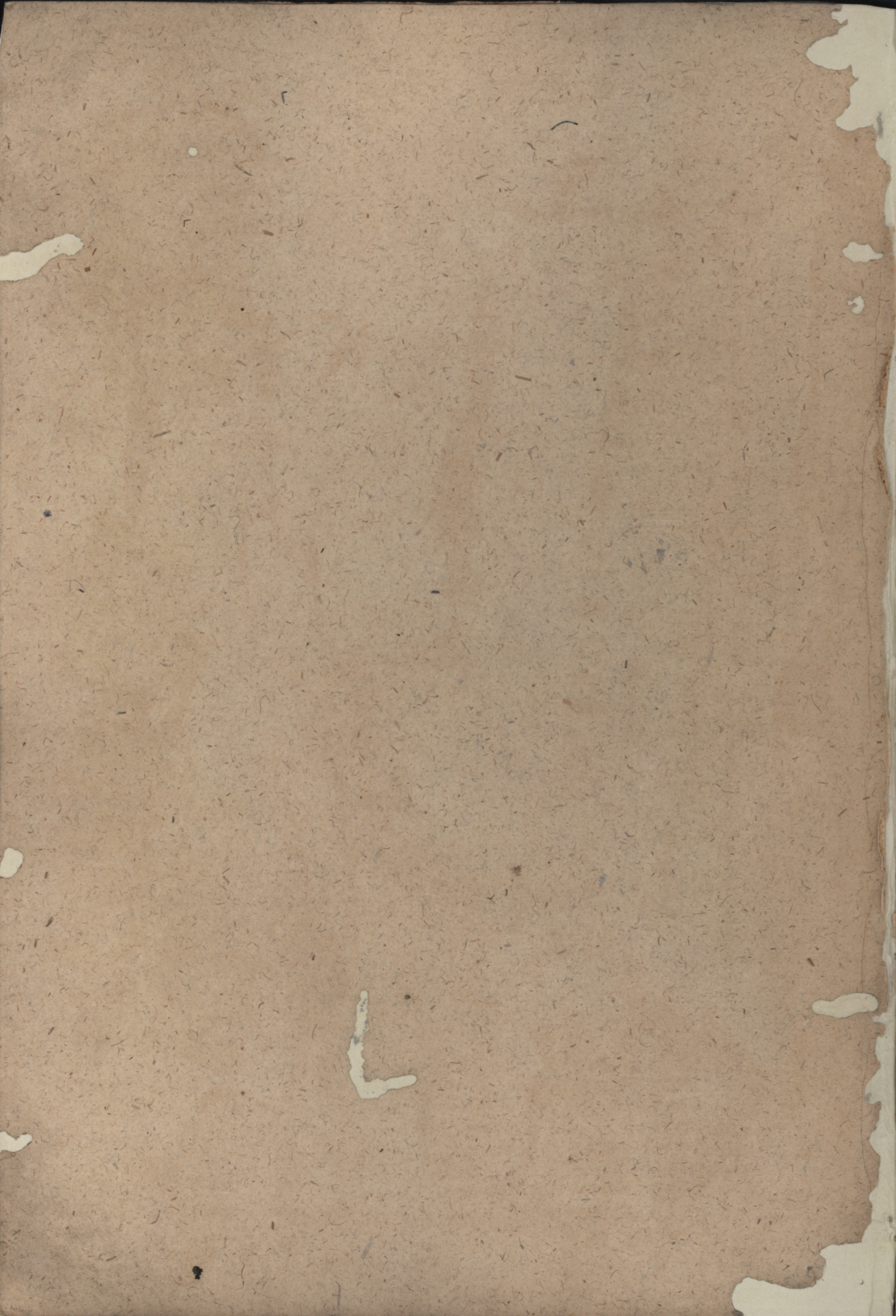


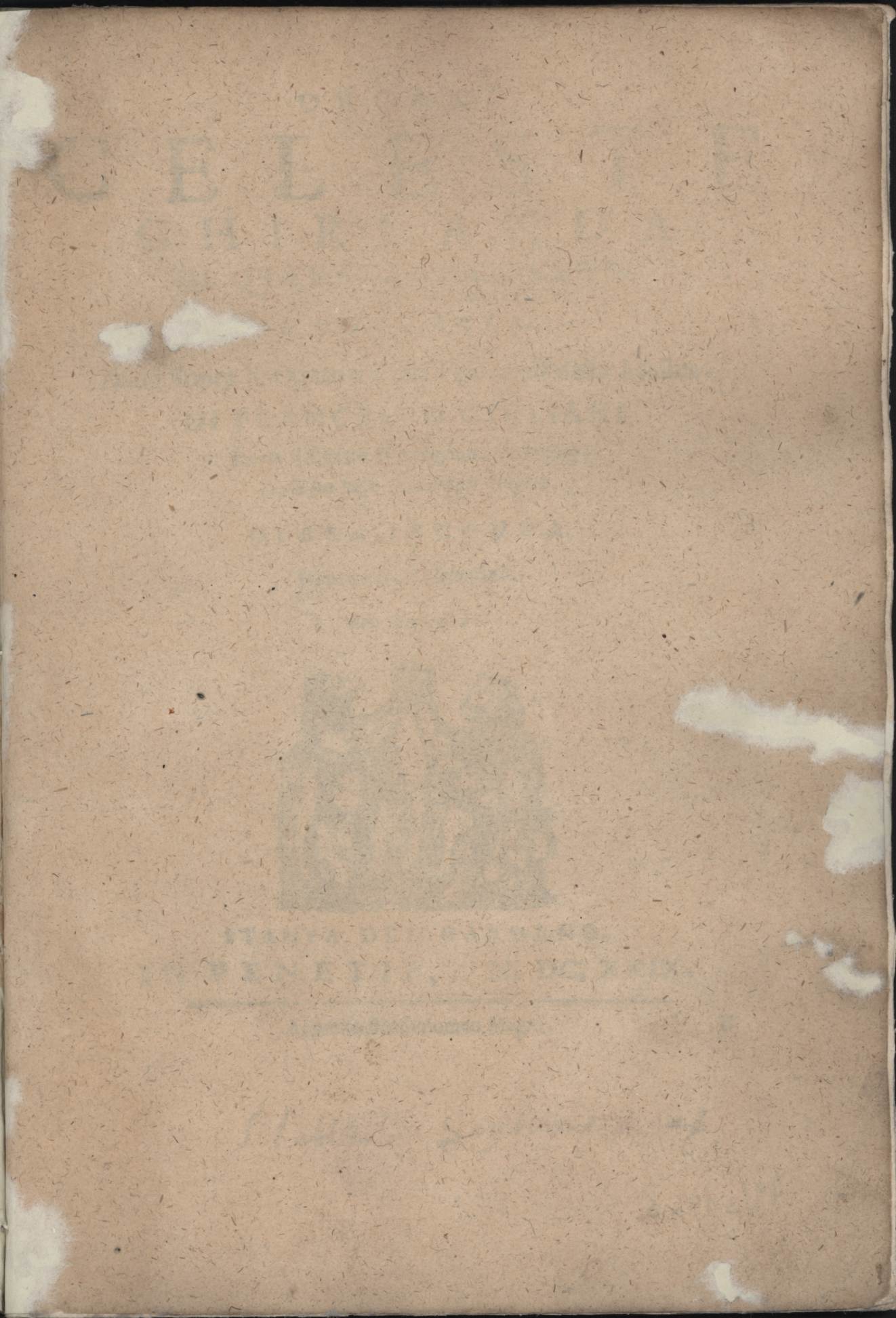
Voce sola.

Celeste Ghirlanda.

Di  
Francesco Giuliano.

Organo.





Miss W37 (2)

49/314x6

ORGANO  
**C E L E S T E**  
**G H I R L A N D A**  
DI QUARANTA CONCERTI  
A VOCE SOLA.

Divisi Sopra le Quattro Parti Principali della Musica.

DI FRANCESCO GIVLIANI

Detto il Cerato D'Arzignano Vicentino.

*Con il suo Basso Continuo per l'Organo.*

OPERA SECONDA.

Nouamente Ristampata.

*Con Privilegio.*



STAMPA DEL GARDANO.  
IN VENETIA, M. DC. XXIX.

Appresso Bartholomeo Magni.

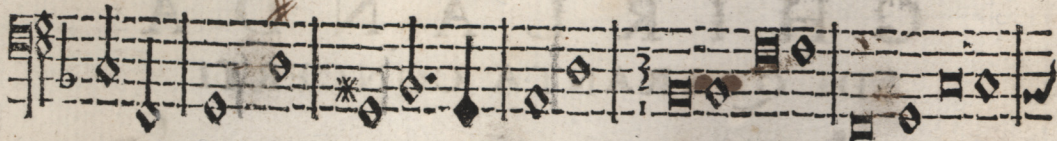
B

*Mattia Sayttani organ.*

Canto Solo.



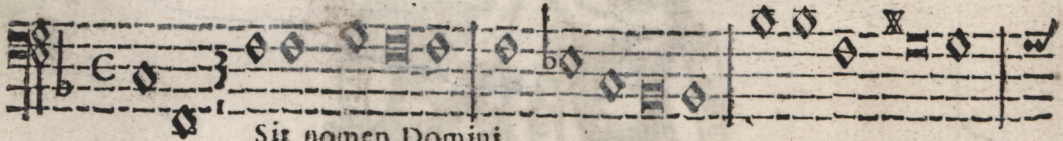
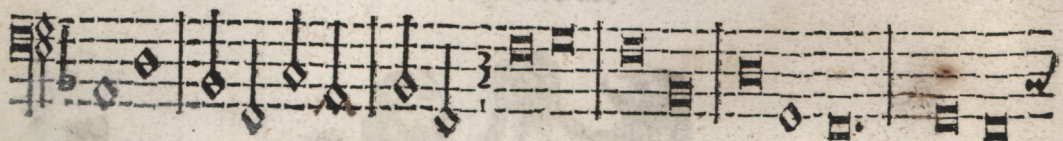
It nomen Domini



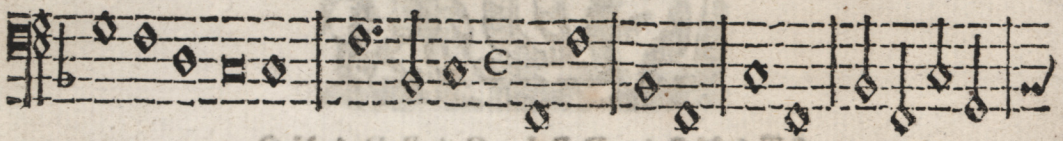
A folis



Excelsus



Sit nomen Domini



**G**

Aude Virgo Maria

343

Alleluia

Resurrexit

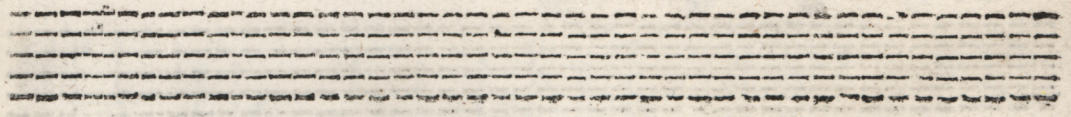
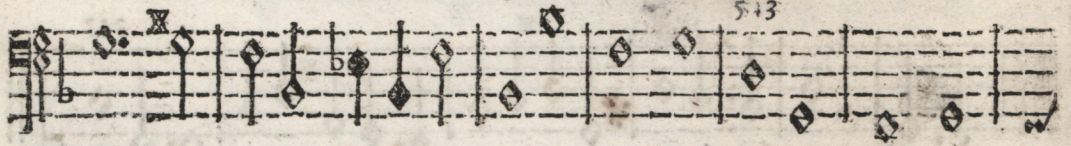
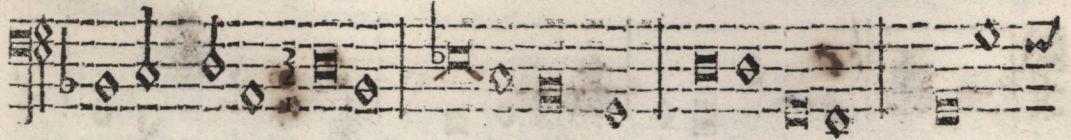
343

Ora pro nobis.

**A**



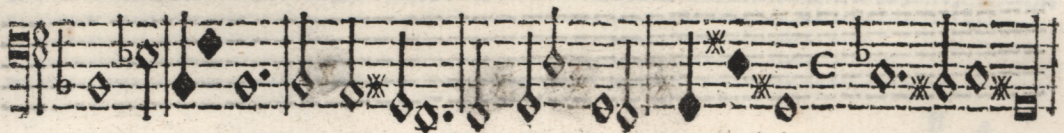
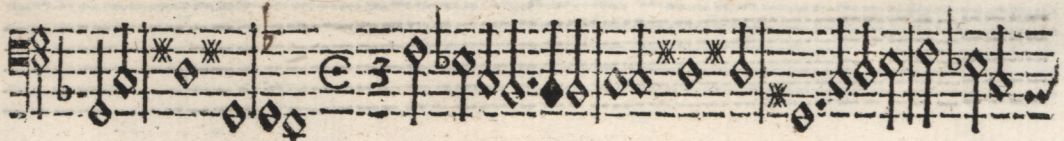
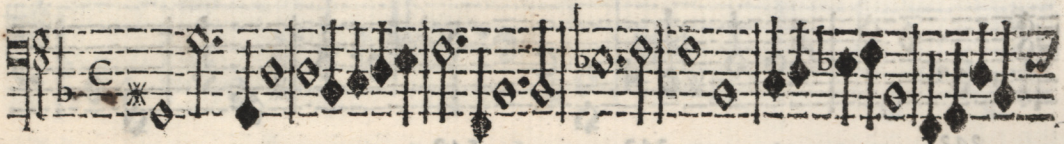
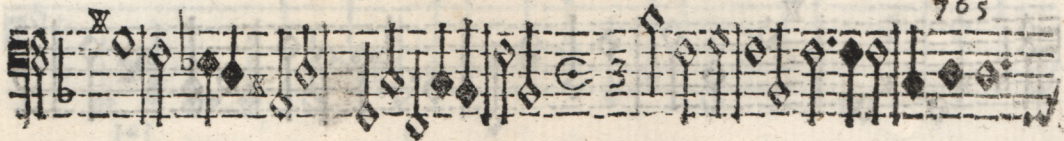
Ve Virgo Gratiofa







Virgo Benedi&ta




**H**

Odie Christus Natus est

343

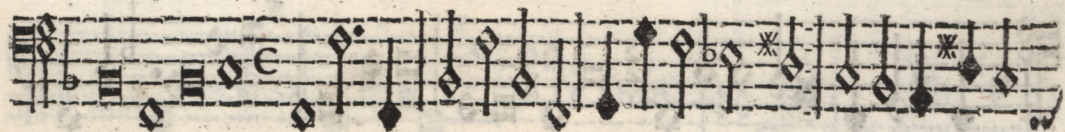
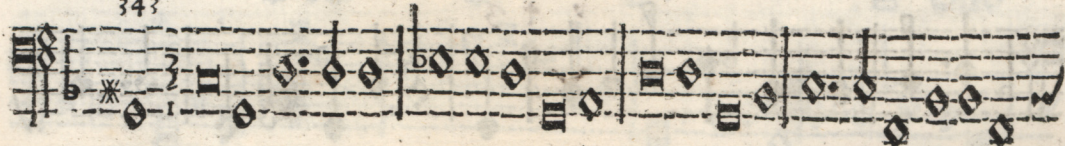
343

**P** 

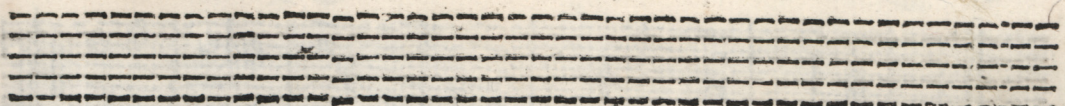
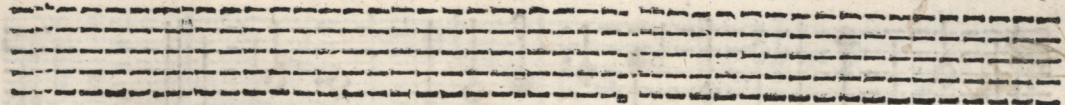
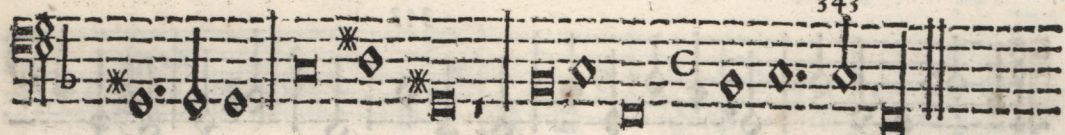
Ercussit Saul mille.



343

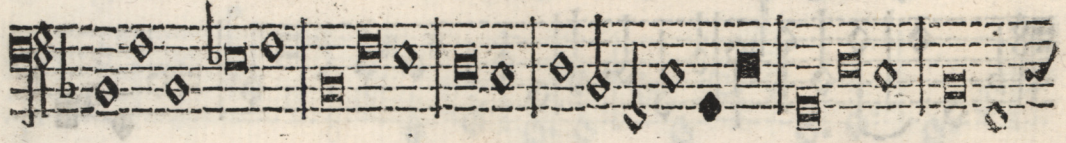


343



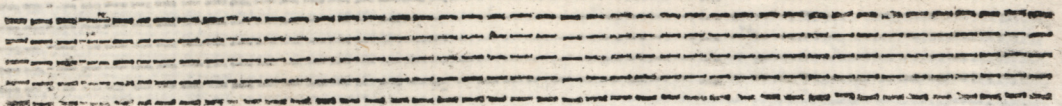
**E** 

Go flos campi.



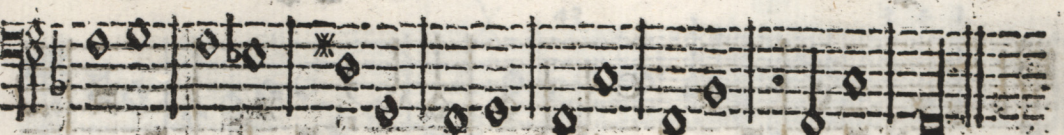
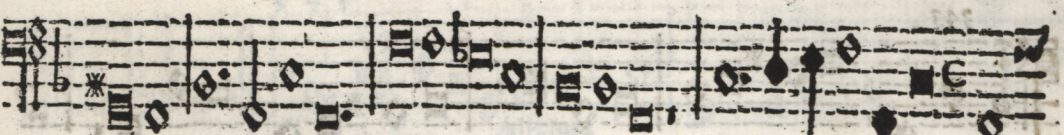
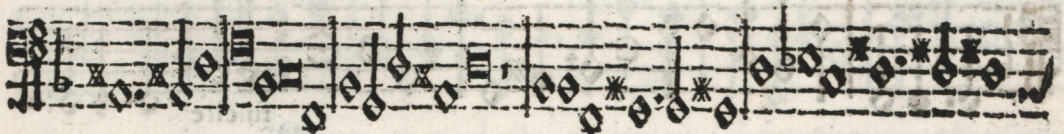
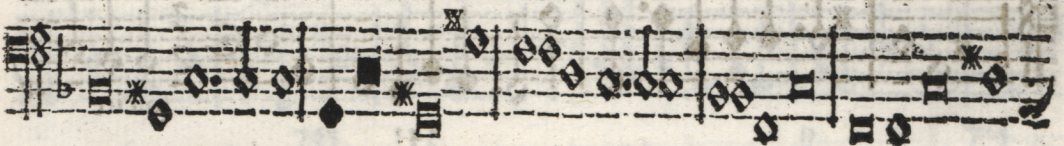
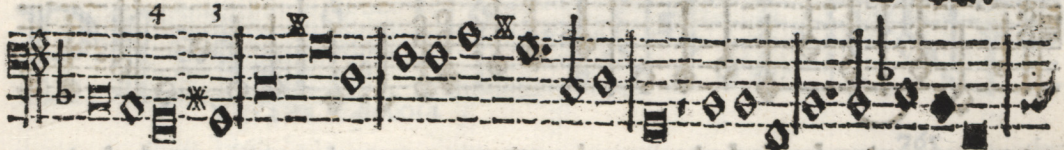
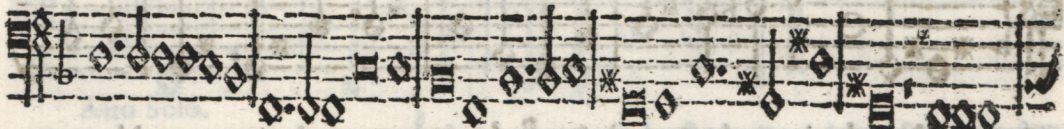
sub umbra illius

343

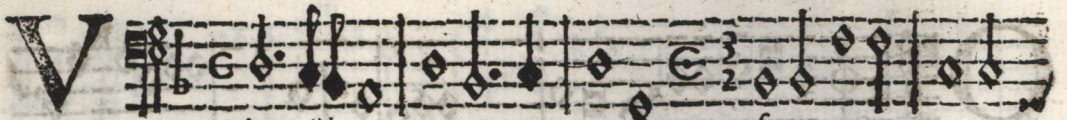




Maria o porta celi



Basso cont. delli Concerti di Francesco Cerato. A voce Solo. B 5

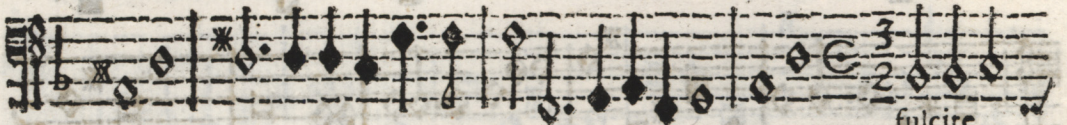
**V** 

Vlnerasti

foror





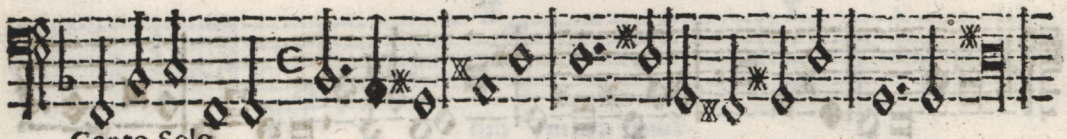


fulcite



543

fulcite

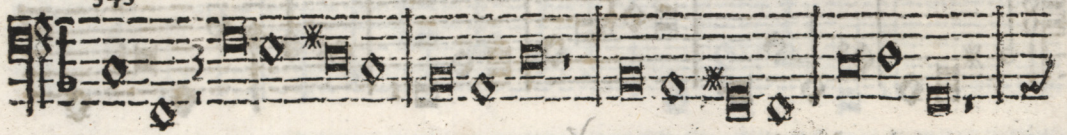


Canto Solo.

**I** 

N conuertendo

343





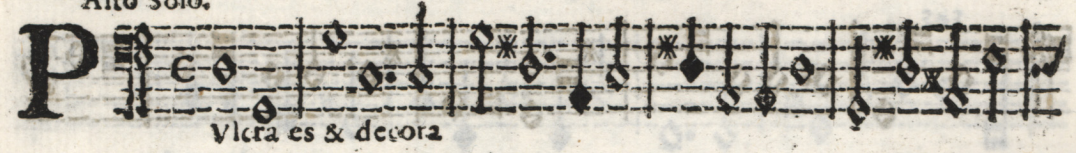
Alto Solo. 543



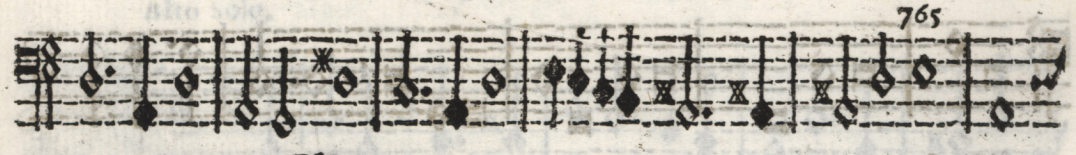
543



Alto Solo.  
**P** *Vicra es & decora*



765



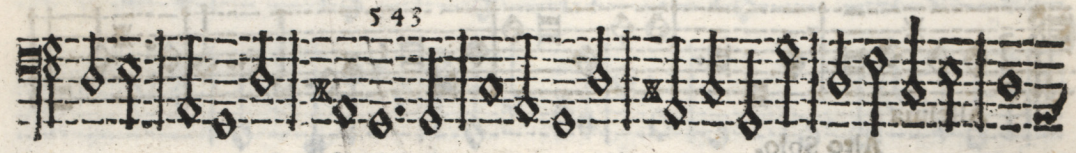
765 765



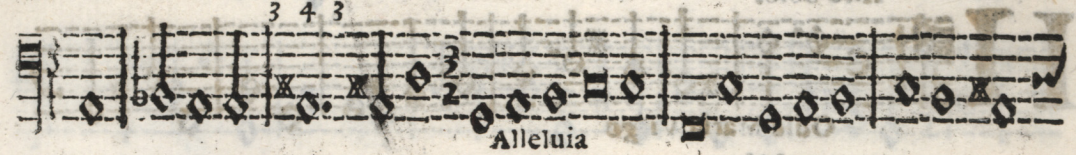
765  
*Auerte*



543



3 4 3  
Alleluia



43 3 4 3



B 6

**E** 

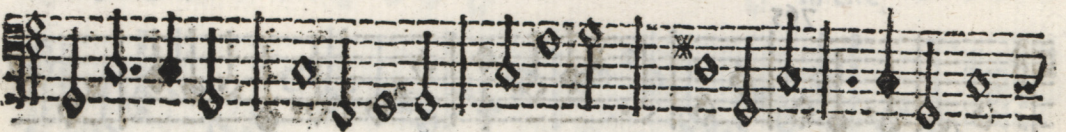
Xultare Deo adiutori nost: o













Alleluia

Alto Solo.

**H** 

Odie Maria Vi go





Alto Solo.

ff

Musical score for Alto Solo, measures 43-43. The score consists of three staves of music. The first staff has a measure number '43' above it. The second staff has a measure number '43' above it. The third staff has a measure number '343' above it. The music is written in a single system with a treble clef and a key signature of one flat. It features various note values, rests, and dynamic markings.

Alto Solo.

Musical score for Alto Solo, measures 43-765. The score consists of seven staves of music. The first staff has a large letter 'E' at the beginning and a measure number '43' above it. Below the first staff is the instruction 'G edimint'. The second staff has measure numbers '43', '765', and '765' above it. The third staff has a measure number '543' above it. The fourth, fifth, and sixth staves do not have measure numbers. The seventh staff has measure numbers '343' above it. The music is written in a single system with a treble clef and a key signature of one flat. It features various note values, rests, and dynamic markings.

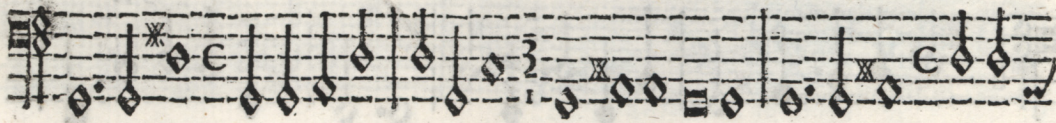
Basso cont. delli Concerti di Francesco Cerato. A voce Sola. B 7



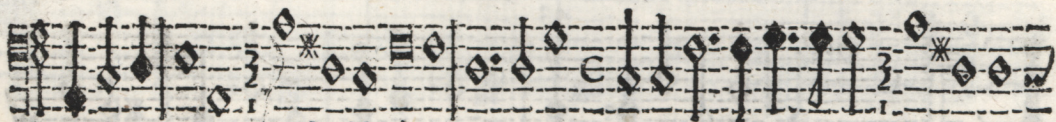
Ancta Maria



Sancta Maria



Sancta Maria



Sancta Maria

Sancta Ma-

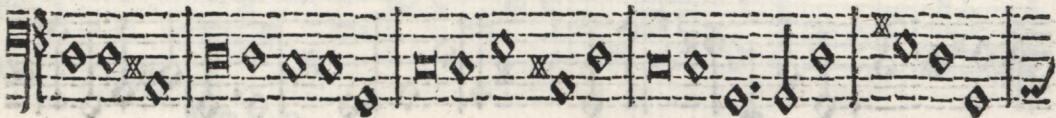


ria

Sancta Maria



fentiant



**D** 

Escendi in hortum meum





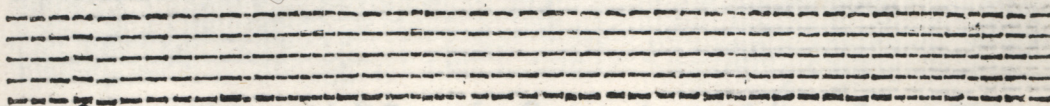









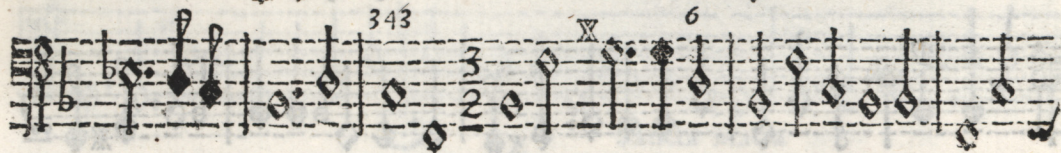


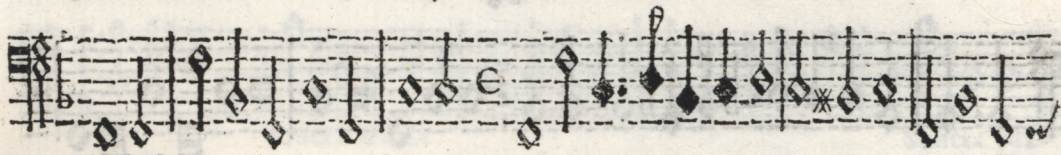


**D** 

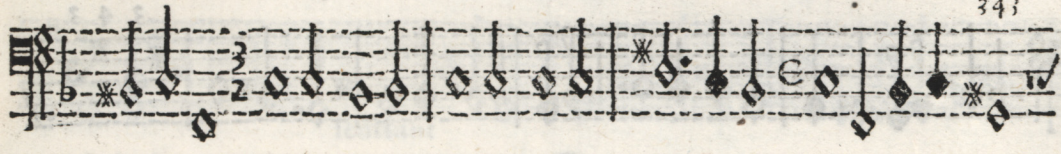
Ilectus meus

 343

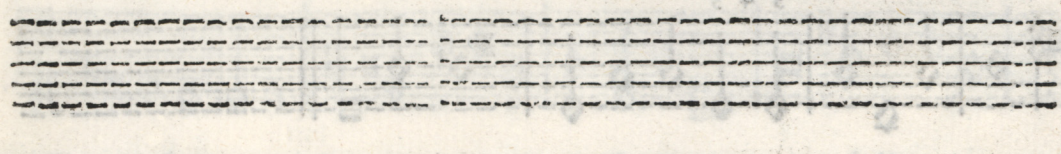
 343 6

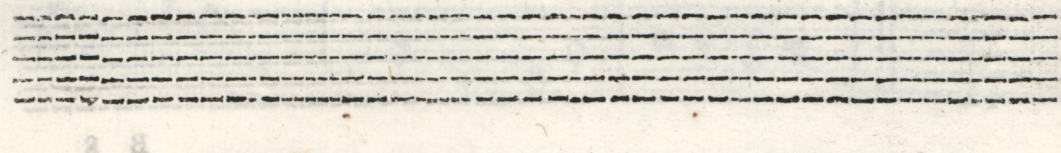
 343

 343

 343







Alto Solo.

15

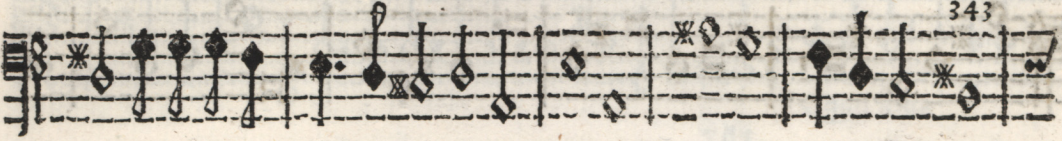
Alto Solo.

**A**

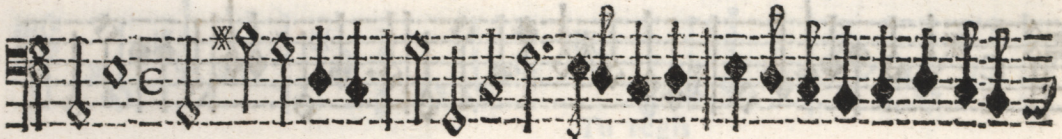


Nima mea liquefacta est

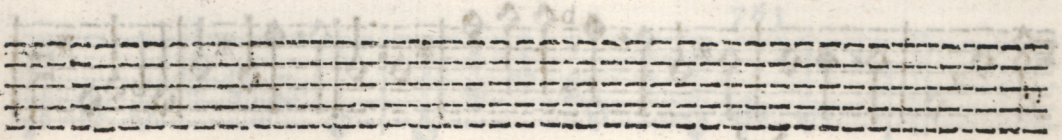
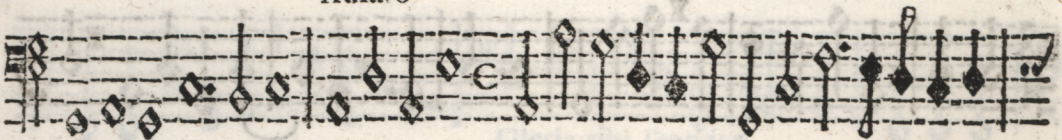
Alto Solo.



adiuro vos



Adiuro



Basso cont. delli Concerti di Francesco Cerato. A voce Sola. B 9 Finis.

Basso cont. dell' Concerti di Francesco Caroto. A voce Solo. B e Finis.

Gloriosa Domina

Quod Eua

765

O Gloriosa

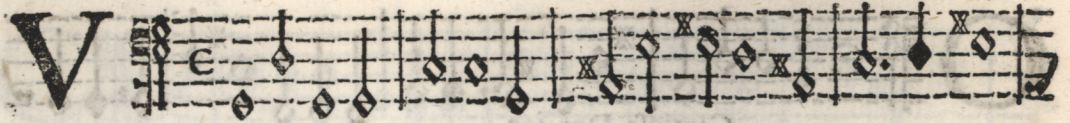
Tu regis

43

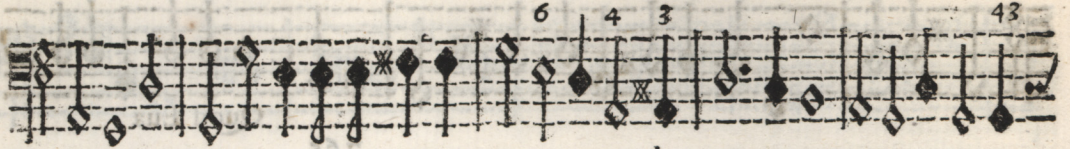
4 3

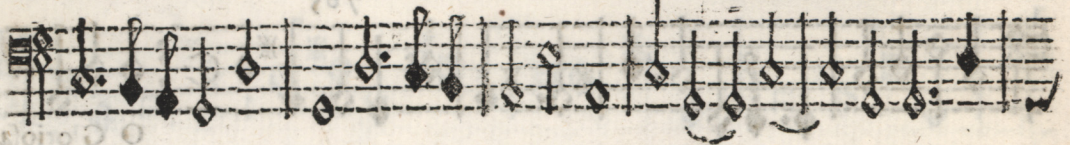
Gleria tibi Domine

765

**V** 

Ox dilecti mei



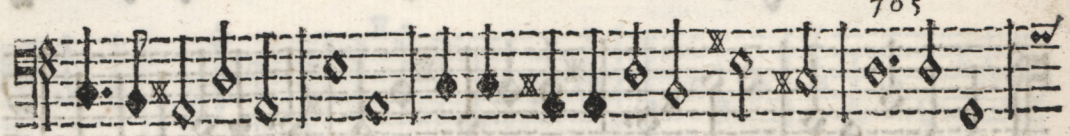




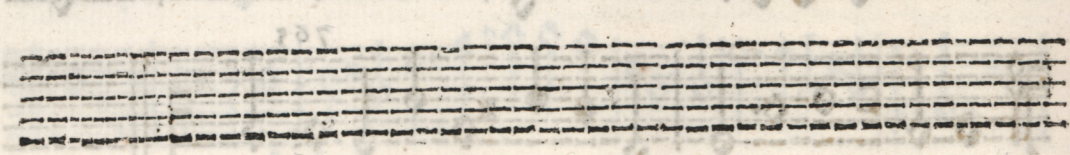


quia caput











V

Musical staff with notes and a treble clef. The staff contains a series of notes, some with accidentals (sharps and flats), and rests. A large 'V' is written at the beginning of the staff.

Eni in hortum

Musical staff with notes and a treble clef. The staff contains a series of notes, some with accidentals, and rests. A treble clef is visible at the beginning of the staff.

343

343

Musical staff with notes and a treble clef. The staff contains a series of notes, some with accidentals, and rests. A treble clef is visible at the beginning of the staff.

343

Musical staff with notes and a treble clef. The staff contains a series of notes, some with accidentals, and rests. A treble clef is visible at the beginning of the staff.

76

6

543

43

Musical staff with notes and a treble clef. The staff contains a series of notes, some with accidentals, and rests. A treble clef is visible at the beginning of the staff.

Musical staff with notes and a treble clef. The staff contains a series of notes, some with accidentals, and rests. A treble clef is visible at the beginning of the staff.

Musical staff with notes and a treble clef. The staff contains a series of notes, some with accidentals, and rests. A treble clef is visible at the beginning of the staff.

Empty musical staff with a treble clef.

Empty musical staff with a treble clef.

**A**

343

Rdens est cor meum

3 4 3

343

5 4 5

7 5

7 6 5

343

343

343

Tenor Solo.

I 

Ndica mihi

765

54 3



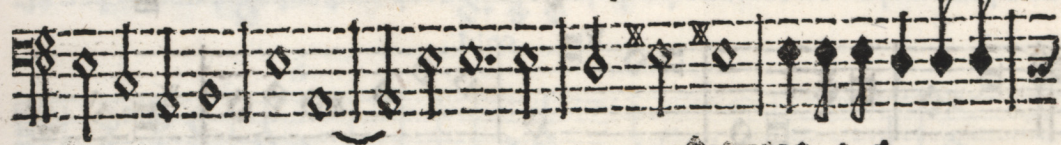
54 3

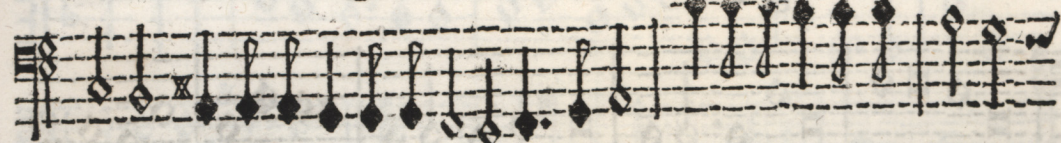


Si ignoras te



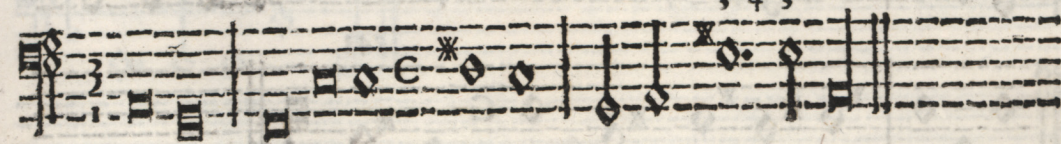


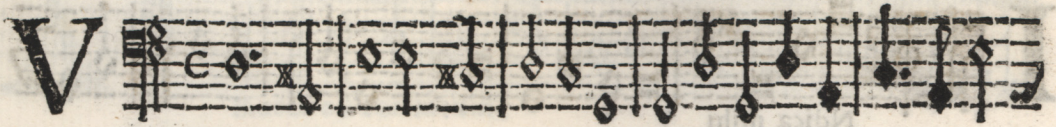




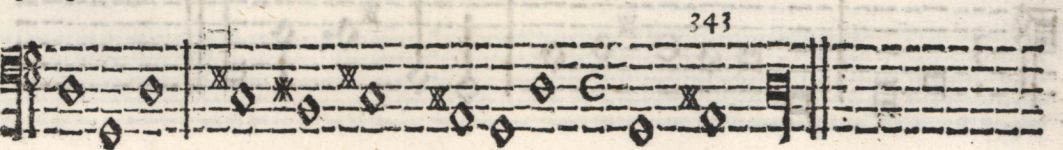
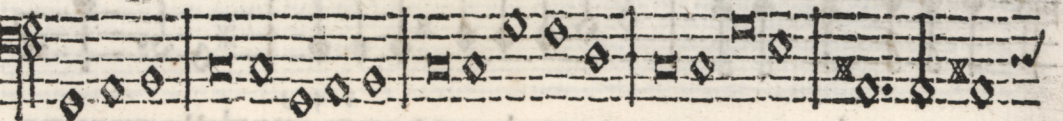
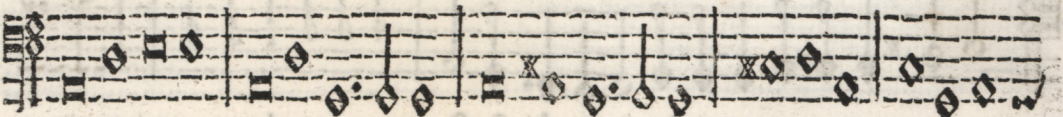
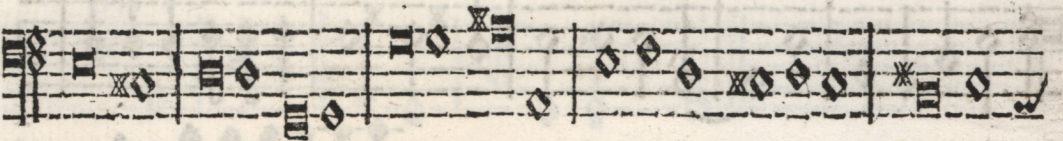
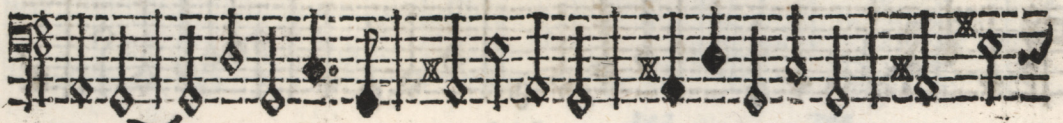


3 4 3



**V** 

Eni Sponfa Christi



Tenor Solo.

23

69

10102/1002T

765

A musical staff starting with a large 'O' time signature and a common time signature 'C'. The staff contains several measures of music with various note values and accidentals.

Sculetur me

765

543

A musical staff with notes and accidentals, including a sharp sign and a flat sign.

543

543

543

A musical staff with notes and accidentals, including a sharp sign and a flat sign.

A musical staff with notes and accidentals, including a sharp sign and a flat sign.

765

A musical staff with notes and accidentals, including a sharp sign and a flat sign.

Idea

6

A musical staff with notes and accidentals, including a sharp sign and a flat sign.

A musical staff with notes and accidentals, including a sharp sign and a flat sign.

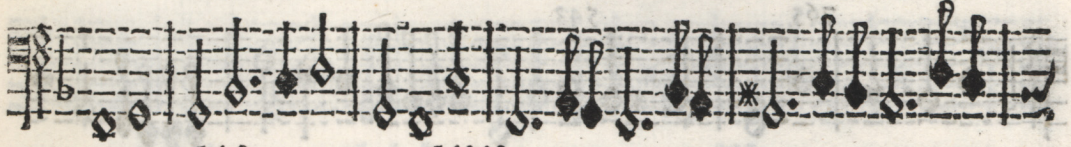
Aleluia

A musical staff with notes and accidentals, including a sharp sign and a flat sign.

Two empty musical staves at the bottom of the page.

**G** 

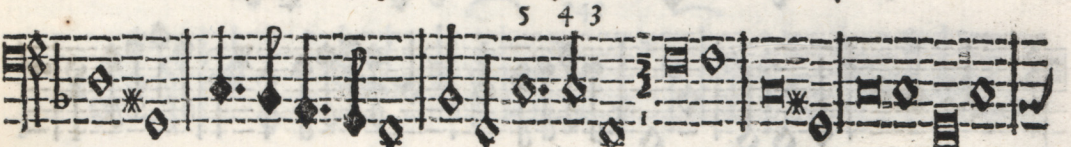
Audeamus omnes



5 4 3                      5 4 3 4 3



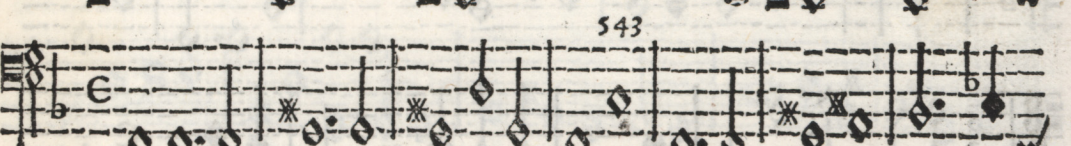
5 4 3



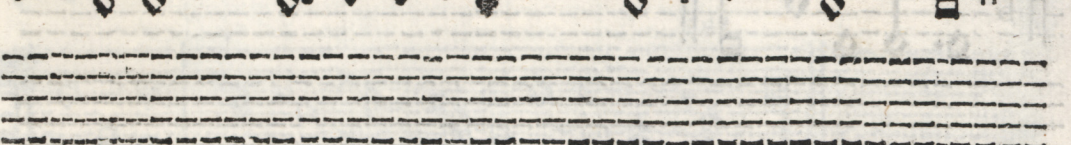
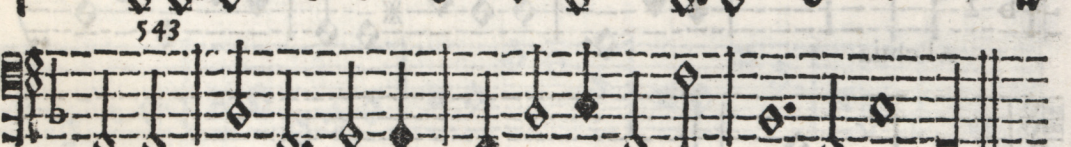
6



5 4 3



5 4 3



**A** 

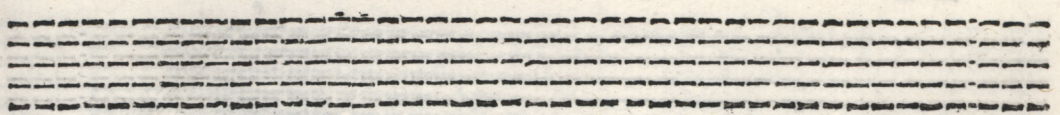
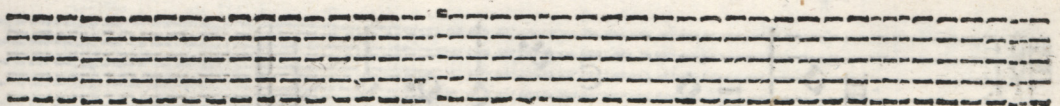
Ve Dulcissima Maria



343 765 

343 765 

343 765 



**E**

Xultate.

43

343



Tenor Solo.

27

solos olat



765 6 43

Bone Iesu

343 65 343

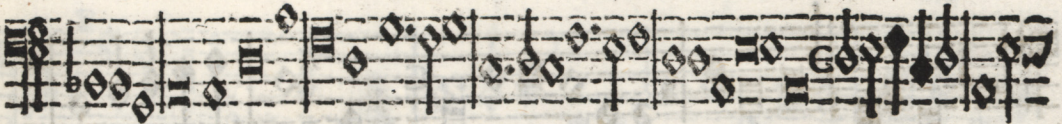
3 4 3

42

6363 54 32

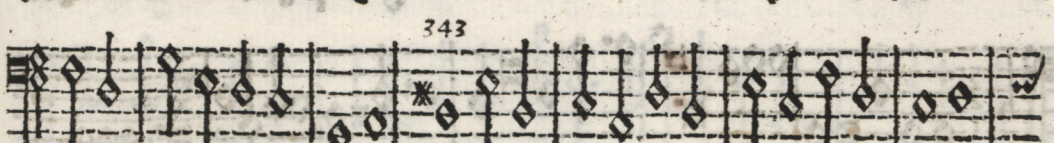
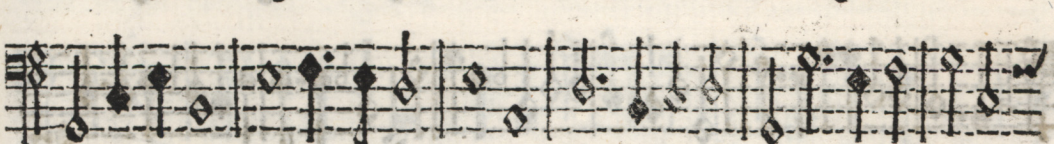
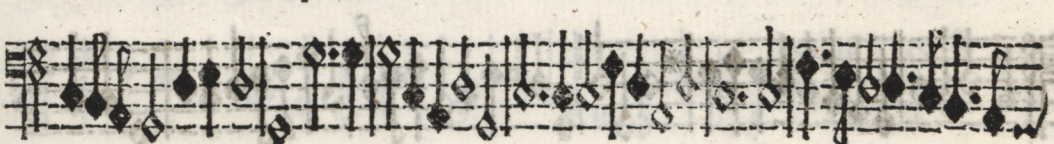
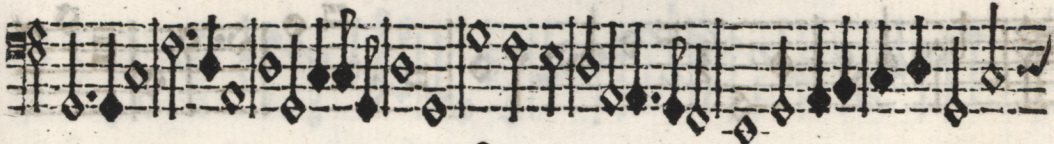
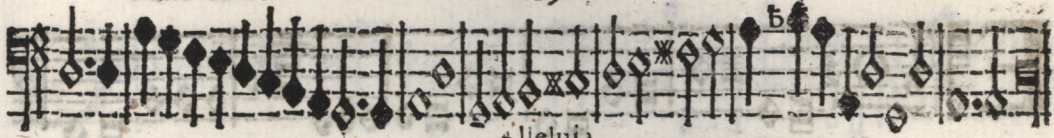
**O** 

Reverunt faciem templi.



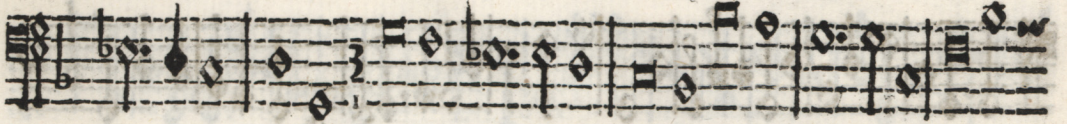
Basso Solo.

19

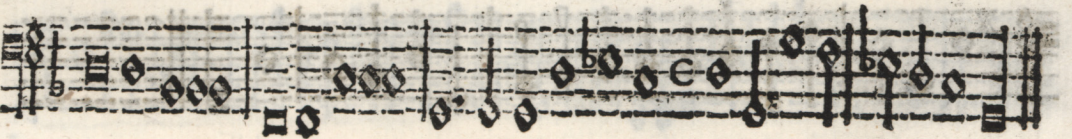


**E** 

Xurgat Deus

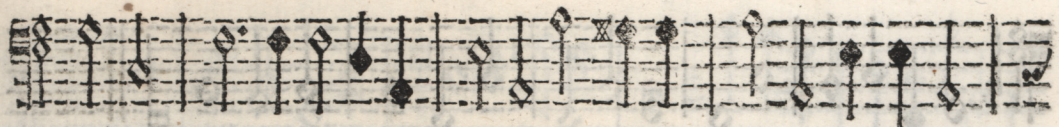


Cantate Deo



**D** 

Omne exaudi





First staff of music, starting with a treble clef, a key signature of one flat (B-flat), and a common time signature (C). The staff contains a series of notes, including a prominent B-flat in the second measure.

Magnum Sacramentum

Second staff of music, starting with a treble clef, a key signature of one flat, and a common time signature. It begins with the number 343. The staff contains a series of notes, including a prominent B-flat in the second measure.

Third staff of music, starting with a treble clef, a key signature of one flat, and a common time signature. The staff contains a series of notes, including a prominent B-flat in the second measure.

Fourth staff of music, starting with a treble clef, a key signature of one flat, and a common time signature. The staff contains a series of notes, including a prominent B-flat in the second measure.

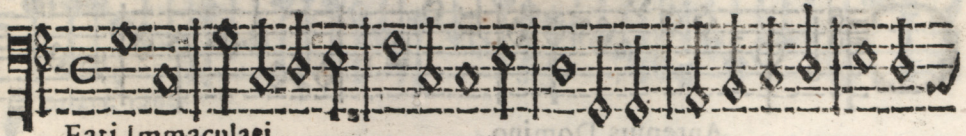
Fifth staff of music, starting with a treble clef, a key signature of one flat, and a common time signature. The staff contains a series of notes, including a prominent B-flat in the second measure.

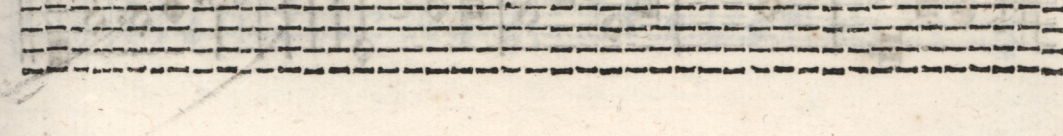
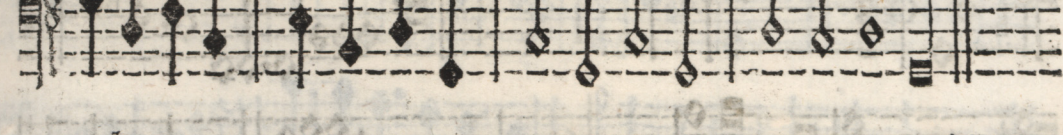
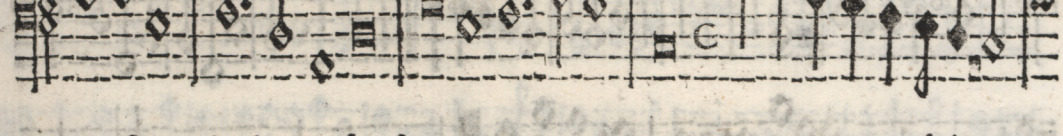
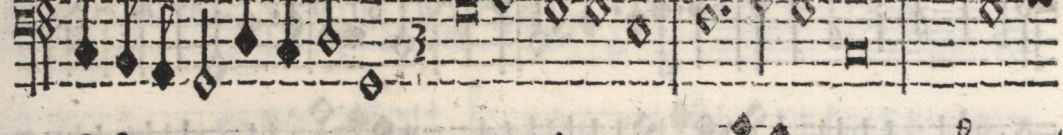
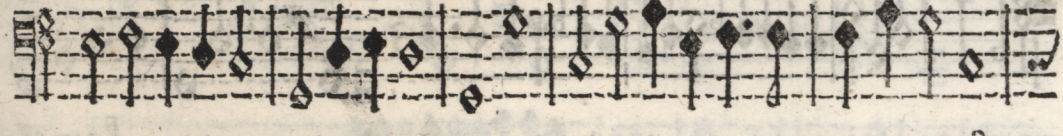

Sixth staff of music, starting with a treble clef, a key signature of one flat, and a common time signature. It begins with the number 343. The staff contains a series of notes, including a prominent B-flat in the second measure.

Seventh staff of music, starting with a treble clef, a key signature of one flat, and a common time signature. The staff contains a series of notes, including a prominent B-flat in the second measure.

Eighth staff of music, which is mostly empty with some faint markings.

Ninth staff of music, which is mostly empty with some faint markings.

**B**  *Eati Immaculagi*



The first staff begins with a large 'C' time signature and a treble clef. The music consists of a series of notes and rests, with some notes marked with a 'p' (piano) dynamic.

Antemus Domino

The piece 'Antemus Domino' is written across ten staves. The notation includes various note values, rests, and dynamic markings such as 'p' and 'f'. The key signature has one flat (B-flat). The piece concludes with a double bar line and repeat dots.



The first staff of musical notation is a single line with a treble clef and a common time signature (C). It contains a series of notes, including quarter, eighth, and sixteenth notes, with some rests. The notes are mostly in the middle range of the staff.

Vbilare Deo

The second staff of musical notation is a single line with a treble clef and a common time signature (C). It contains a series of notes, including quarter, eighth, and sixteenth notes, with some rests. The notes are mostly in the middle range of the staff.

The third staff of musical notation is a single line with a treble clef and a common time signature (C). It contains a series of notes, including quarter, eighth, and sixteenth notes, with some rests. The notes are mostly in the middle range of the staff.

The fourth staff of musical notation is a single line with a treble clef and a common time signature (C). It contains a series of notes, including quarter, eighth, and sixteenth notes, with some rests. The notes are mostly in the middle range of the staff.

The fifth staff of musical notation is a single line with a treble clef and a common time signature (C). It contains a series of notes, including quarter, eighth, and sixteenth notes, with some rests. The notes are mostly in the middle range of the staff.

The sixth staff of musical notation is a single line with a treble clef and a common time signature (C). It contains a series of notes, including quarter, eighth, and sixteenth notes, with some rests. The notes are mostly in the middle range of the staff.

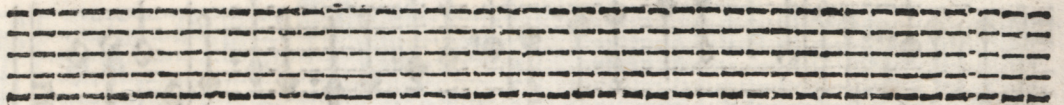
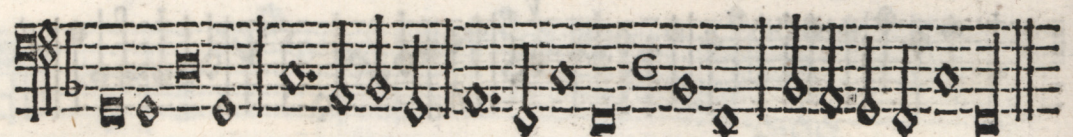
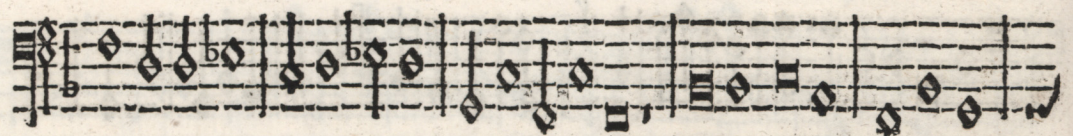
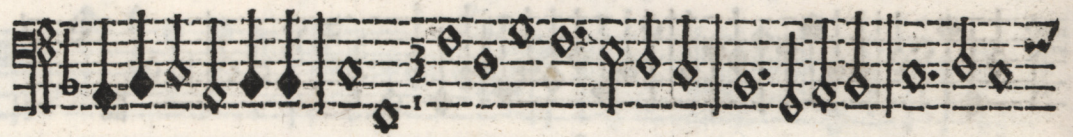
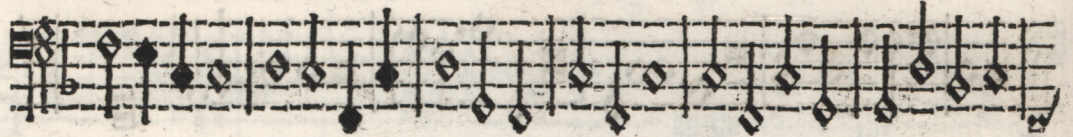
The seventh staff of musical notation is a single line with a treble clef and a common time signature (C). It contains a series of notes, including quarter, eighth, and sixteenth notes, with some rests. The notes are mostly in the middle range of the staff.

The eighth staff of musical notation is a single line with a treble clef and a common time signature (C). It contains a series of notes, including quarter, eighth, and sixteenth notes, with some rests. The notes are mostly in the middle range of the staff.

The ninth staff of musical notation is a single line with a treble clef and a common time signature (C). It contains a series of notes, including quarter, eighth, and sixteenth notes, with some rests. The notes are mostly in the middle range of the staff.

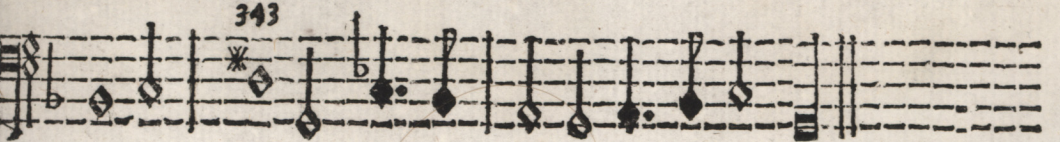
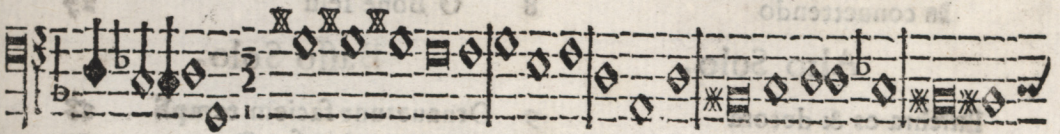
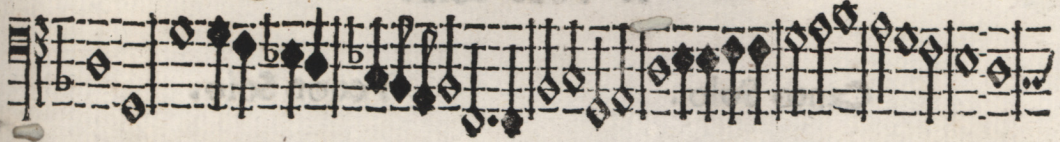
**Q** 

Væ est ista





Quam suavis est Domine.



FINIS.

# TAVOLA

Delli Concerti del Cerato.

A Voce Solo.

Canto Solo.

Tenor Solo.

Sit nomen Domini	1	Vox dilecti mei	18
Gaude Virgo Maria	1	Veni in Hortum meum	19
Aue Virgo Gratioſa	2	Ardens eſt cor meum	20
O Virgo Benediſta	3	Indica mihi	21
Hodie Chriſtus Natus eſt	4	Veni Sponſa Chriſti	22
Percuſit Saul mille	5	Oſculetur me	23
Ego Flos Campi	6	Gaudeamus omnes	24
O Maria o porta Celi	7	Aue Dulciſſima Maria	25
Vulneraſti cor meum	8	Exultate iuſti in Domino	26
In conuertendo	8	O Bone Ieſu	27

Alto Solo.

Baſſo Solo.

Pulchra es & decora	9	Ornauerunt faciem templi	28
Exultate Deo	10	Saluum me fac Deus	29
Hodie Maria Virgo	10	Exurgat Deus	30
Egredimini & videte	11	Domine Exaudi	31
Sancta Maria	12	O Magnum Sacramentum	32
Deſcendi in hortum meum	13	Beati Immaculati	33
Dilectus meus loquitur mihi	14	Cantemus Domino	34
Anima mea liquefacta eſt	15	Iubilate Deo	35
Cantabo Domino	16	Quæ eſt iſta	36
O Glorioſa Domina	17	O quam ſuauiſ es Domine	37

IL FINE.





84/164 G

