

Color forms of *Monocesta coryli* (Say) in West Virginia (Coleoptera: Chrysomelidae)

Monocesta coryli (Say) is rather widespread in the eastern United States. In life, the beetles are usually bright yellow with the basal and apical thirds of the elytra metallic blue. In pinned specimens, the yellow areas fade to pale tan. A number of years ago (Clark, 1986), I reported on an unusual color form that occurs in southern Ohio, the dark elytral markings being either entirely absent or very poorly developed. More recently (Clark, 2000), I stated that both forms occur in West Virginia, but I gave very little information regarding the distribution of each.

Not surprisingly, the pale form occurs in areas of West Virginia that are near Ohio. Normal, darkly marked beetles are prevalent in more eastern and southern areas. The dividing line between the two forms roughly corresponds to the Allegheny Front and highest elevations in the state. Two disjunct records of the dark form, from Monongalia County, are from student collections, and they may have resulted from mislabeling (Linda Butler and S. Clark Haynes, personal communications). Very few intermediately colored specimens have been found. In only one instance, at Spruce Knob Lake in Randolph County, were both forms found together. Balsbaugh and Hays (1972) illustrated on the cover of "The Leaf Beetles of Alabama" a specimen with the distal marking well developed but with the basal marking only faintly indicated. Beyond this, atypical color forms in states other than Ohio and West Virginia have not been well documented.

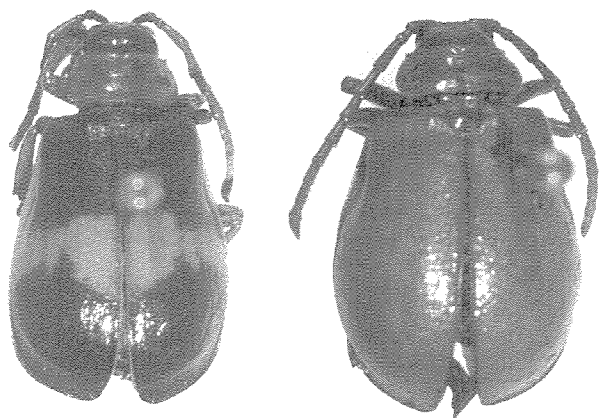


Figure 1. *Monocesta coryli* (Say); left, Renick (Greenbrier County); right, Hilton Village (Fayette County).

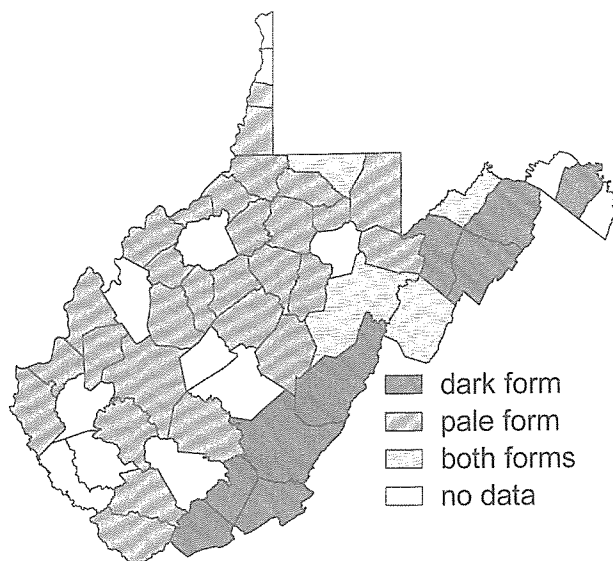


Figure 2. Color forms of *Monocesta coryli* (Say), West Virginia distribution.

Approximately 300 museum specimens were examined in connection with this study. A complete listing is available from the West Virginia Department of Agriculture. Beyond this, hundreds of additional beetles were observed in the field but were not prepared for museum preservation.

Literature Cited

- Balsbaugh, E. U. and K. L. Hays. 1972. The leaf beetles of Alabama (Coleoptera: Chrysomelidae). Auburn University, Agricultural Experiment Station, Bulletin 441:1-223.
- Clark, S. M. 1986. Occurrence of *Monocesta coryli* (Say) in Ohio (Coleoptera: Chrysomelidae). The Ohio Journal of Science 86(4):213.
- Clark, S. M. 2000. An annotated list of the leaf beetles of West Virginia (Coleoptera: Orsodacnidae, Megalopodidae, Chrysomelidae exclusive of Bruchinae). Occasional Publications of the West Virginia Department of Agriculture 1:1-93.
- Shawn M. Clark, Monte L. Bean Life Science Museum, Brigham Young University, Provo, Utah 84602-0200