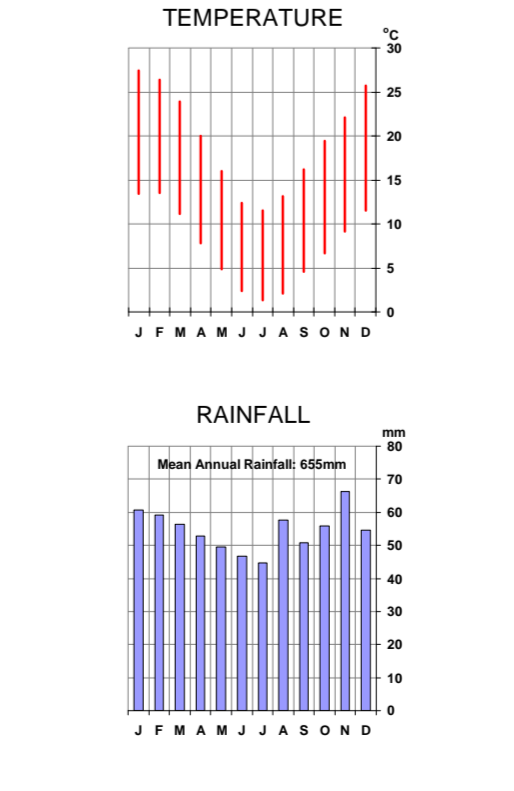
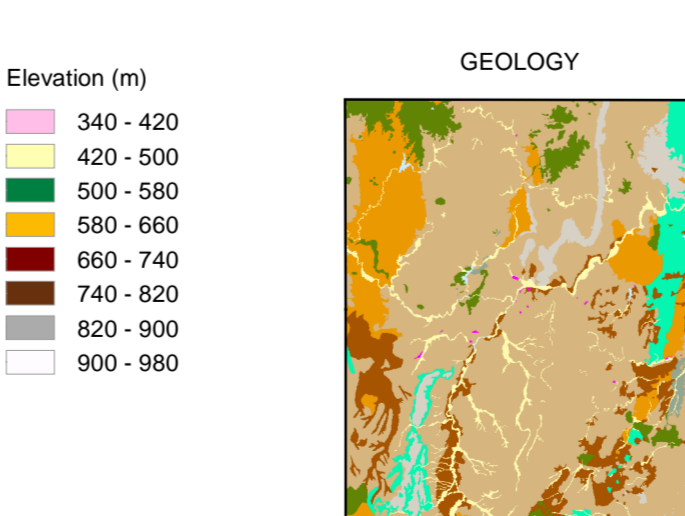
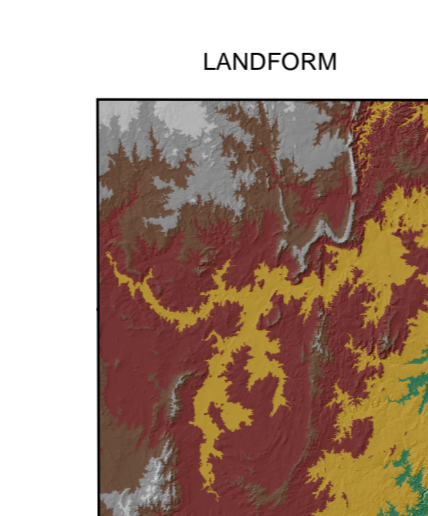
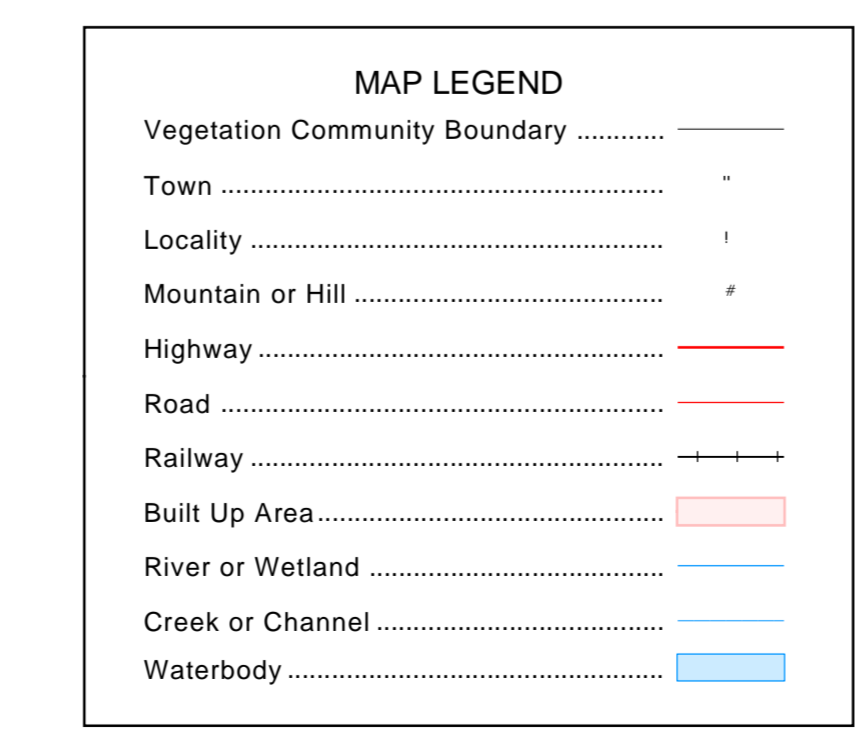
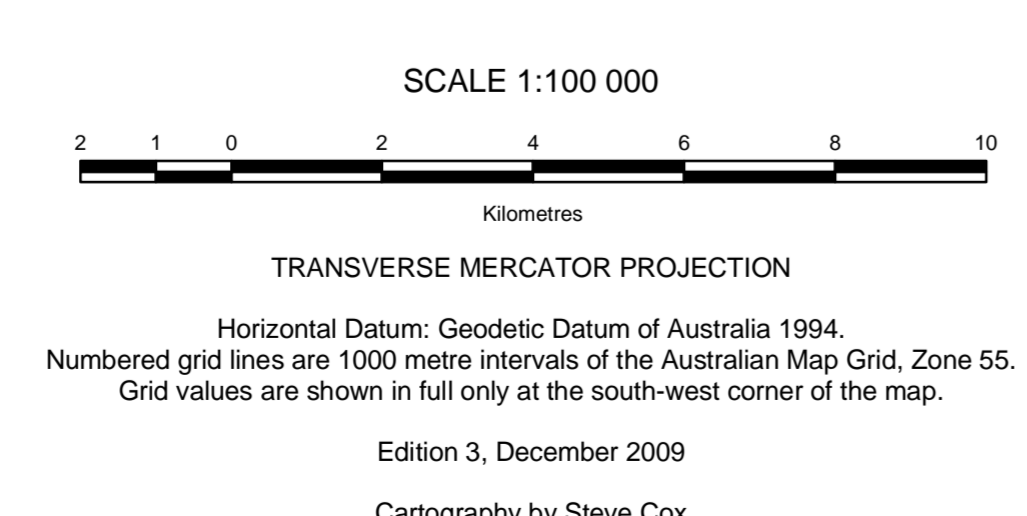
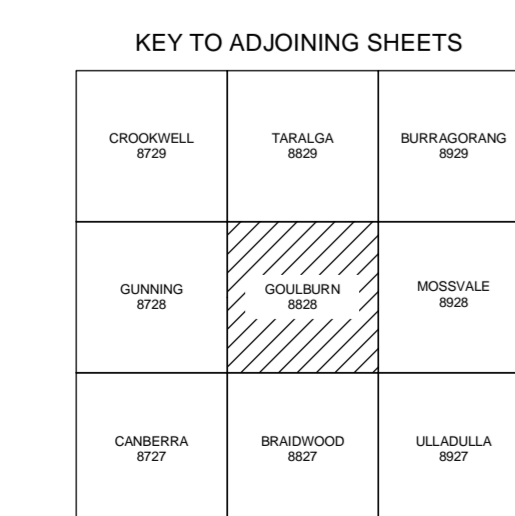
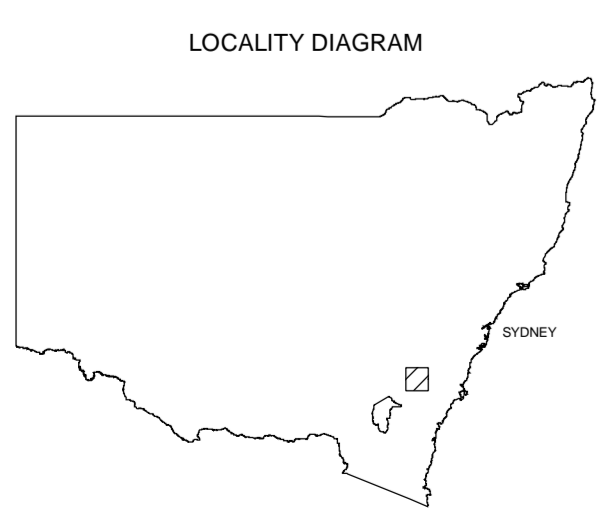


# VEGETATION GOULBURN - 8828

## VEGETATION KEY



A-N Map Unit Code	Map Unit Name	Principal Species	Vegetation Structure	Physical Environment	Area (ha) (Percent)
W5F	Wet Sclerophyll Forests (shrubby)	Trees: <i>Eucalyptus radiata</i> , <i>E. fastigata</i> , <i>E. dalympiana</i> , <i>Acacia melanoxylon</i> , <i>Shrub: Leucopogon lanceolatus</i> , <i>Climbers: Clematis aristata</i> , <i>Groundcover: Pteridium esculentum</i> , <i>Lomandra longifolia</i> , <i>Vicia hederacea</i> , <i>Stellaria purpurea</i> , <i>Gonocarpus tetragynus</i> , <i>Poa sieberiana</i> , <i>Microlaena stipoides</i> , <i>Dianella tasmanica</i> , <i>Purpurella microphylla</i>	Tall eucalypt forest with an open shrub layer and most herbaceous groundcover.	Elevated ranges on moist loams 800-1250m Dividing Range Liffey-Tallangra.	850
W5F	Wet Sclerophyll Forests (grass)	Trees: <i>Eucalyptus elata</i> , <i>E. radiata</i> , <i>E. fastigata</i> , <i>Shrub: Leucopogon lanceolatus</i> , <i>Rubus parviflorus</i> , <i>Climbers: Clematis aristata</i> , <i>Glycine clandestina</i> , <i>Groundcover: Pteridium esculentum</i> , <i>Lomandra longifolia</i> , <i>Vicia hederacea</i> , <i>Microlaena stipoides</i> , <i>Dichondra</i> spp., <i>Desmodium varians</i> , <i>Phoradendron microphylla</i> , <i>Echinopogon ovatus</i> , <i>Dianella caerulea</i> , <i>Veronica piteba</i> , <i>Stellaria purpurea</i> , <i>Plantago obtusa</i>	Tall eucalypt forest with an open shrub layer and most herbaceous groundcover.	Sheltered slopes on high ranges, mainly 600-1100m, western Blue Mts - Deus.	760
W5F	Highland Range Shrubland Forest	Trees: <i>Eucalyptus elata</i> , <i>E. radiata</i> , <i>E. fastigata</i> , <i>Shrub: Leucopogon lanceolatus</i> , <i>Rubus parviflorus</i> , <i>Climbers: Clematis aristata</i> , <i>Glycine clandestina</i> , <i>Groundcover: Pteridium esculentum</i> , <i>Lomandra longifolia</i> , <i>Vicia hederacea</i> , <i>Microlaena stipoides</i> , <i>Dichondra</i> spp., <i>Desmodium varians</i> , <i>Phoradendron microphylla</i> , <i>Echinopogon ovatus</i> , <i>Dianella caerulea</i> , <i>Veronica piteba</i> , <i>Stellaria purpurea</i> , <i>Plantago obtusa</i>	Tall eucalypt forest with an open shrub layer and most herbaceous groundcover.	Undulating basalt tablelands, 600-1200m, Oberon-Moss Vale.	750
GW1	Tableland Basalt Forest	Trees: <i>Acacia melanoxylon</i> , <i>Eucalyptus viminalis</i> , <i>E. radiata</i> , <i>Groundcover: Microlaena stipoides</i> , <i>Stellaria purpurea</i> , <i>Pteridium esculentum</i> , <i>Acacia novae-zelandiae</i> , <i>Dichondra</i> spp., <i>Geranium solanderi</i> , <i>Hydrocotyle laxiflora</i> , <i>Desmodium varians</i> , <i>Echinopogon ovatus</i> , <i>Austrodorothoa racemosa</i> , <i>Austrostipa rubra</i> , <i>Phragmites variis</i> , <i>Vicia hederacea</i>	Eucalypt forest with sparse shrubs and dense groundcover of sedges & grasses.	Open eucalypt forest with sparse shrub layer and dense grassy groundcover.	110100
GW1	Frost Hollow Grassy Woodland	Trees: <i>Eucalyptus pauciflora</i> , <i>E. rubida</i> , <i>Groundcover: Themeda australis</i> , <i>Gonocarpus tetragynus</i> , <i>Microlaena stipoides</i> , <i>Hypocymbarium</i> , <i>Chrysocarpum apiculatum</i> , <i>Poa sieberiana</i> , <i>Asperula conferta</i> , <i>Elymus scaber</i> , <i>Hydrocotyle laxiflora</i>	Open eucalypt forest with sparse shrub layer and dense grassy groundcover.	Frost hollow flats on undulating tableland 600-900m, Abercombe-Bradwood.	710
GW1	Tableland Hills Grassy Woodland	Trees: <i>Eucalyptus diversus</i> , <i>E. macrocarpa</i> , <i>Shrub: Mellichium uncinatum</i> , <i>Groundcover: Microlaena stipoides</i> , <i>Gonocarpus tetragynus</i> , <i>Lomandra filiformis</i> ssp. <i>concolor</i> , <i>Hydrocotyle laxiflora</i> , <i>Hypocymbarium</i> , <i>Hibbertia obtusifolia</i> , <i>Goodenia hederacea</i> , <i>Oxalis perparva</i> , <i>Austrodorothoa racemosa</i>	Open eucalypt forest with sparse shrub layer and dense grassy groundcover.	Undulating hills on tableland 500-1100m, Hartley-Bradwood.	7500
GW1	Tableland Grassy Box Gum Woodland	Trees: <i>Eucalyptus melliodora</i> , <i>E. diversus</i> , <i>E. macrocarpa</i> , <i>Shrub: Lissanthe stipitata</i> , <i>Mellichium uncinatum</i> , <i>Groundcover: Lomandra filiformis</i> ssp. <i>concolor</i> , <i>Themeda australis</i> , <i>Microlaena stipoides</i> , <i>Gonocarpus tetragynus</i> , <i>Hydrocotyle laxiflora</i> , <i>Poa sieberiana</i> , <i>Austrodorothoa racemosa</i> , <i>Goodenia hederacea</i>	Eucalypt woodland with sparse shrub layer and grassy groundcover.	Loamy soils on undulating tableland 650-900m, Abercombe River-Bradwood.	10100
GW1	Tableland Granite Woodland	Trees: <i>Eucalyptus viminalis</i> , <i>E. melliodora</i> , <i>Shrub: Rubus parviflorus</i> , <i>Acacia melanoxylon</i> , <i>Climbers: Glycine clandestina</i> , <i>Groundcover: Hydrocotyle laxiflora</i> , <i>Microlaena stipoides</i> , <i>Acacia novae-zelandiae</i> , <i>Geranium solanderi</i> , <i>Lomandra filiformis</i> ssp. <i>concolor</i> , <i>Rumex brownii</i> , <i>Dichondra</i> spp., <i>Desmodium varians</i> , <i>Stellaria purpurea</i> , <i>Themeda australis</i> , <i>Austrodorothoa racemosa</i> , <i>Hypocymbarium</i>	Eucalypt woodland with sparse shrub layer and grassy groundcover.	Rolling granite terrain 550-1050m on the tablelands, Hartley-Bradwood.	110
GL	Tableland Flats Grassland	<i>Poa</i> spp., <i>Carex</i> spp., <i>Junco</i> spp., <i>Themeda australis</i> , <i>Austrodorothoa</i> spp. and <i>Austrostipa</i> spp.	Closed tussock grassland.	Flats and depressions on the southern tablelands from Goulburn to Bradwood, 650-700m.	9800
DSF	Elevated Gorge Forest	Trees: <i>Eucalyptus punctata</i> , <i>E. agglomerata</i> , <i>Shrub: Persoonia linearis</i> , <i>Phyllanthus tenuis</i> , <i>Hibbertia obtusifolia</i> , <i>Olearia viscidula</i> , <i>Podocarpus nictitans</i> , <i>Climbers: Hadenbergia violacea</i> , <i>Bilardiera scandens</i>	Eucalypt forest with open understorey of sclerophyll shrubs & grasses.	Dry upper slopes of rocky gorges 400-850m, upper Wolandilly & Shoalhaven gorges.	3200
DSF	Bungonia States Woodland	Trees: <i>Eucalyptus viminalis</i> , <i>E. macrocarpa</i> , <i>Shrub: Olearia viscidula</i> , <i>Lissanthe stipitata</i> , <i>Cassinia uncata</i> , <i>Davallia leptophylla</i> , <i>Climbers: Clematis microphylla</i> , <i>Groundcover: Dianella revoluta</i> , <i>Lomandra filiformis</i> ssp. <i>multiflora</i> , <i>Goodenia hederacea</i> , <i>Syntherisma</i> spp., <i>E. hydrocotyle laxiflora</i> , <i>Opuntia</i> spp., <i>Veronica piteba</i>	Eucalypt woodland with sparse understorey of shrubs & grasses.	Loams on slates and shales in steep gorges 350-600m, Shoalhaven gorge.	1100
DSF	Woolandilly-Cox-Shoalhaven Gorge Woodland	Trees: <i>Eucalyptus tereticornis</i> , <i>Brachyctenon papuense</i> , <i>E. melliodora</i> , <i>Shrub: Olearia viscidula</i> , <i>Buraria graciosa</i> , <i>Lissanthe stipitata</i> , <i>Climbers: Glycine clandestina</i> , <i>Clematis aristata</i> , <i>Groundcover: Dichondra</i> spp., <i>Chelidonium selkirkii</i> , <i>Desmodium varians</i> , <i>Lomandra multiflora</i> , <i>L. longifolia</i> , <i>Antidea ramosa</i> , <i>Chelidonium distans</i> , <i>Dichroanthus micrantha</i> , <i>Microlaena stipoides</i> , <i>Desmodium brachypodium</i> , <i>Hypocymbarium</i>	Eucalypt woodland with a mixed understorey of shrubs, forbs & grasses.	Loams on dry slopes within rocky gorges 150-700m, gorges of Woolandilly & Shoalhaven.	560
DSF	Tableland Ridge Forest	Trees: <i>Eucalyptus sieberi</i> , <i>E. radiata</i> , <i>Shrub: Hibbertia obtusifolia</i> , <i>Persoonia linearis</i> , <i>Leucopogon lanceolatus</i> , <i>Monotoca scoparia</i> , <i>Groundcover: Gonocarpus tetragynus</i> , <i>Pteridium esculentum</i> , <i>Lomandra longifolia</i>	Eucalypt forest with open understorey of sclerophyll shrubs, forbs, sedges & grasses.	Sandy loams on ridges and dry slopes on high ranges 650-1200m, Hartley-Big Bells.	3000
DSF	Tableland Low Woodland	Trees: <i>Eucalyptus ovals</i> , <i>E. macrocarpa</i> , <i>Shrub: Brachyctenon papuense</i> , <i>Persoonia linearis</i> , <i>Hibbertia obtusifolia</i> , <i>Alphacassia linearis</i> , <i>Melichium uncinatum</i> , <i>Groundcover: Goodenia hederacea</i> , <i>Lepidosperma purpurea</i> , <i>Dianella revoluta</i> , <i>Lomandra obtusa</i> , <i>Gonocarpus tetragynus</i> , <i>Juncus pallidus</i> , <i>Lomandra multiflora</i> L. filiformis, <i>Persoonia linearis</i>	Low eucalypt woodland with open understorey of sclerophyll shrubs, sedges & grasses.	Sandy loams on low ridges on the tableland, 550-800m, Canowindah-Bradwood.	10200
DSF	Eastern Tablelands Dry Forest	Trees: <i>Eucalyptus sieberi</i> , <i>E. agglomerata</i> , <i>Shrub: Persoonia linearis</i> , <i>Alphacassia linearis</i> , <i>Hibbertia obtusifolia</i> , <i>Syzygium glauca</i> , <i>Climbers: Bilardiera scandens</i> , <i>Groundcover: Goodenia hederacea</i> , <i>Pomax umbellata</i> , <i>Lomandra obtusa</i> , <i>Microlaena stipoides</i>	Open eucalypt forest with open understorey of sclerophyll shrubs, sedges & forbs.	Sandy loams on ridges on the eastern tableland margin 550-900m, Joaze-Bradwood.	14600
DSF	Western Tablelands Dry Forest	Trees: <i>Eucalyptus macrocarpa</i> , <i>E. menziesii</i> , <i>E. rossii</i> , <i>E. diversus</i> , <i>Shrub: Hibbertia obtusifolia</i> , <i>Brachyctenon papuense</i> , <i>Davallia leptophylla</i> , <i>Groundcover: Gonocarpus tetragynus</i> , <i>Lomandra filiformis</i> ssp. <i>concolor</i> , <i>Poa sieberiana</i> , <i>Goodenia hederacea</i> , <i>Dianella revoluta</i> , <i>Juncus pallidus</i> , <i>Hovea linearis</i>	Low eucalypt forest with open understorey of sclerophyll shrubs, grasses & forbs.	Sandy loams on ridges of the tableland interior 550-1150m, Wallerawang-Captains Flat.	29700
FW1	Tableland Lacustrine Herbfeld	<i>Groundcover: Wilsonia roundedifolia</i> , <i>Agrostis avenacea</i> , <i>Austrodorothoa subulnaria</i> , <i>A. pilosa</i> , <i>Myriophyllum crispatum</i> , <i>Ranunculus amurensis</i> , <i>Schoenus niteus</i> , <i>Sellera radicans</i> , <i>Spergularia marina</i>	Low open spherulic herbfeld.	Periodically inundated bed of Lake Bathurst, c. 670m elevation, southern tableland.	550
FW1	Tableland Bog	Shrub: <i>Epacris microphylla</i> , <i>Lepidosperma concolorata</i> , <i>L. myrsinites</i> , <i>Groundcover: Empodisma minus</i> , <i>Gonocarpus micranthus</i> , <i>Lepidosperma anarthra</i> , <i>Mitrasacme serrifolia</i> , <i>Hydrocotyle pedunculata</i> , <i>Lepidosperma amica</i>	Open to sparse shrub canopy with dense groundcover of sedges & forbs.	Humic loams & peats on granite & siltstones in headwater valleys 500-1200m, Blue Mts Deus.	<10
FW1	Shoalhaven Riparian Scrub	Shrub: <i>Lepidosperma obtusum</i> , <i>Melaleuca encolia</i> , <i>Callistemon sabinii</i> , <i>Lepidosperma grandifolium</i> , <i>Hakea microcarpa</i> , <i>Acacia dealbata</i> , <i>Groundcover: Carex gaudichaudiana</i> , <i>Sotopus polytachyus</i> , <i>Carex breviculmis</i> , <i>Chenopodium purpureum</i> , <i>Dioscorea macroglauca</i> , <i>Hydrocotyle pedunculata</i> , <i>Junco usitatus</i> , <i>Lomandra longifolia</i> , <i>Microlaena stipoides</i> , <i>Persoonia linearis</i> , <i>Poa abilliviana</i> , <i>Senecio diacanthoides</i>	Open but clumped shrub canopy with patchy groundcover of sedges & forbs.	Alluvial sediments 500-800m elevation along the bed and banks of upper Shoalhaven River.	10
FW1	Tableland Swamp Meadow	Shrub: <i>Lepidosperma juniperinum</i> , <i>L. obtusum</i> , <i>Lytium salicaria</i> , <i>Groundcover: Buanea rubiginosa</i> , <i>Carex gaudichaudiana</i> , <i>Elodea spicata</i> , <i>Hydrocotyle pedunculata</i> , <i>Isachne globosa</i> , <i>Junco usitatus</i> , <i>Lepidosperma anarthra</i> , <i>Phragmites australis</i> , <i>Ranunculus mundus</i>	Dense groundcover of water-tolerant, soft-leaved sedges and forbs, occasionally with scattered trees and an open to dense shrub layer.	Peats and humic loams in sediment-filled valleys from the Blue Mountains to Bradwood, 300-1100m.	370
FW1	Riverbank Forest	Trees: <i>Casuarina cunninghamiana</i> , <i>Shrub: Hymenocallis densa</i> , <i>Urtica sicca</i> , <i>Climbers: Stephania japonica</i> , <i>Panorea pandorana</i> , <i>Groundcover: Microlaena stipoides</i> , <i>Lomandra longifolia</i> , <i>Opilismenus aemulus</i> , <i>Dichondra repens</i>	Forest with an open shrub layer and a dense or patchy groundcover of grasses & forbs.	Sand/gravel alluvium along swift-flowing streams 20-800m, Cool, Abercrombie, Woolandilly, Shoalhaven & Deus river systems.	220
FW1	Sandstone Riparian Scrub	Trees: <i>Trochostaphylos laevis</i> , <i>Conzattia apiculata</i> , <i>Shrub: Lomatia myricoides</i> , <i>Tillandsia renifolia</i> , <i>Lepidosperma morrisoni</i> , <i>Groundcover: Lomandra longifolia</i> , <i>Entolasia stricta</i> , <i>Schoenus melanocephalus</i> , <i>Lomandra filiformis</i> , <i>Schoenus niteus</i>	Scrub or low forest with clumped shrubs and sparse groundcover of sedges.	Sandy banks and sandstone beds of streams below 450m, Sydney basin.	10
FW1	Tableland Swamp Flats Forest	Trees: <i>Eucalyptus viminalis</i> , <i>E. pauciflora</i> , <i>Shrub: Rubus parviflorus</i> , <i>Groundcover: Microlaena stipoides</i> , <i>Dichondra</i> spp., <i>Acacia novae-zelandiae</i> , <i>Hydrocotyle laxiflora</i> , <i>Stellaria purpurea</i> , <i>Poa abilliviana</i> , <i>Echinopogon ovatus</i> , <i>Geranium solanderi</i> , <i>Desmodium varians</i>	Open eucalypt forest with sparse shrubs & dense grassy groundcover.	Poory-drained flats in headwaters of streams 550-1200m, Jerrard-Deus.	900
Non-Native/Not-Vegetated Areas	Urbanised or bare areas largely without native vegetation; forests, shrublands, grasslands and herbfelds comprised primarily of exotic plant species, including exotic plantations and pastures. May include variable component of native species depending on seasonal conditions and regrowth rates.				



This map forms part of the Native Vegetation Mapping Report Series 4, NSW Native Vegetation Mapping Program.  
 Map compiled by staff of the Scientific Services Division, NSW Department of Environment, Climate Change & Water.  
 \* Drainage data supplied by NSW Department of Lands, Panorama Ave Bathurst NSW 2795.  
 \* Geological data supplied by the Department of Mineral Resources, PO Box 536 St Leonards NSW 1590.

The information contained in and by this map has been compiled from several sources and may contain errors and omissions. No warranty or representation, expressed or implied, is made with respect to the accuracy of this information, or its suitability for any purpose. The NSW Department of Environment, Climate Change & Water disclaims all and any liability to any person in respect of anything done or omitted to be done in reliance, whether wholly or in part, upon this information.

This map is only reliable at the published scale of 1:100,000.  
 Copyright New South Wales Government. All Rights Reserved.  
 No part of this map may be reproduced without permission.

