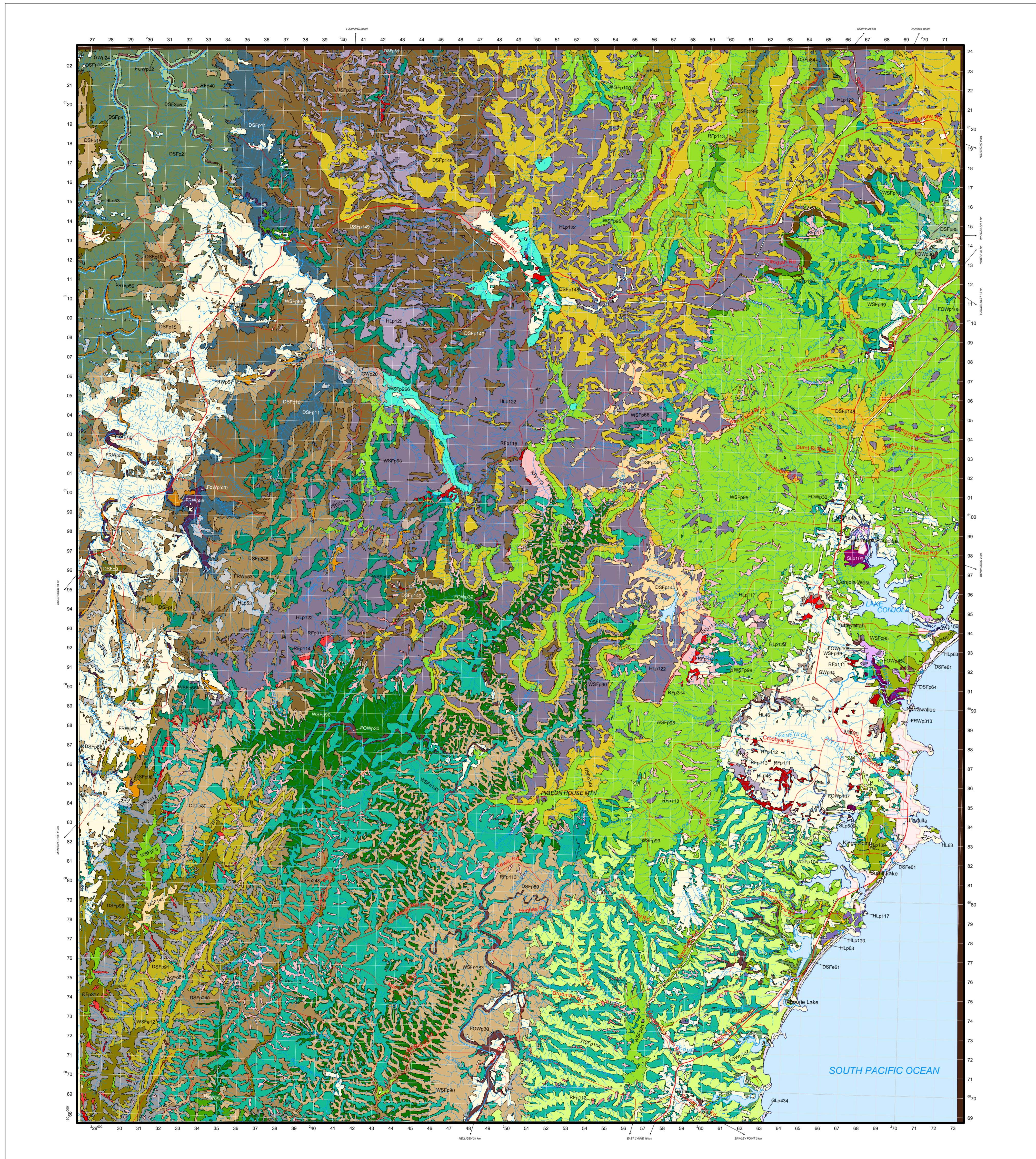
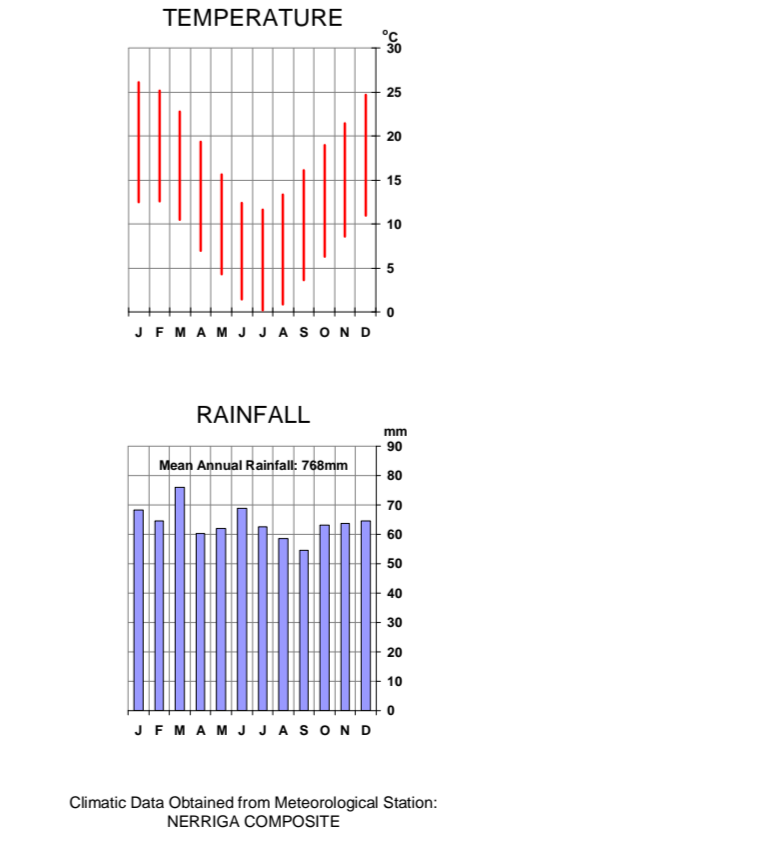
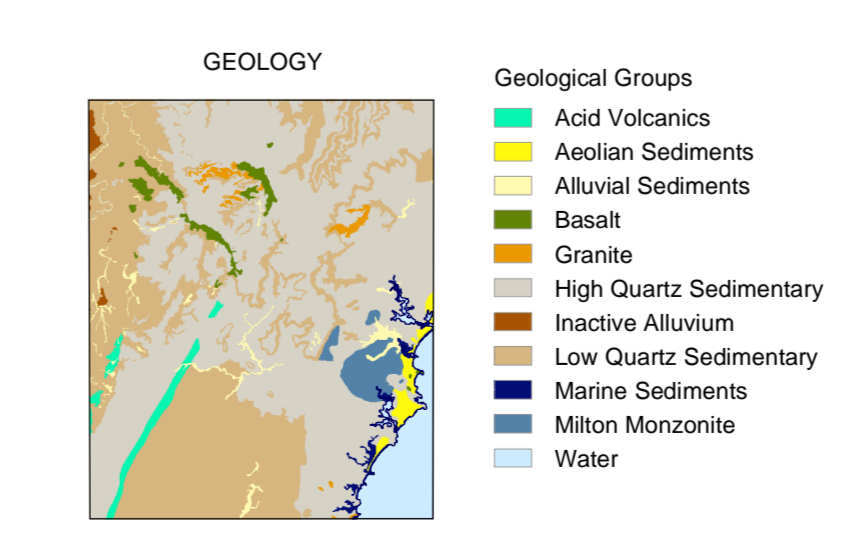
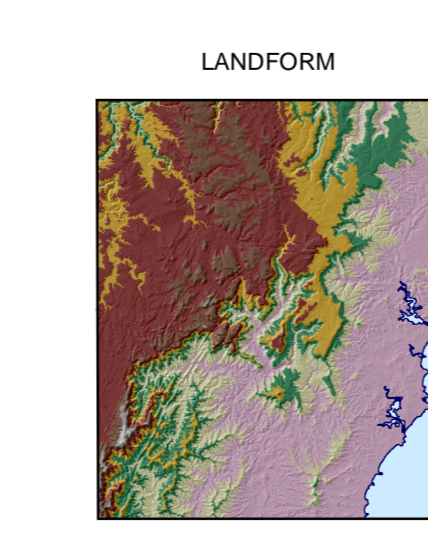
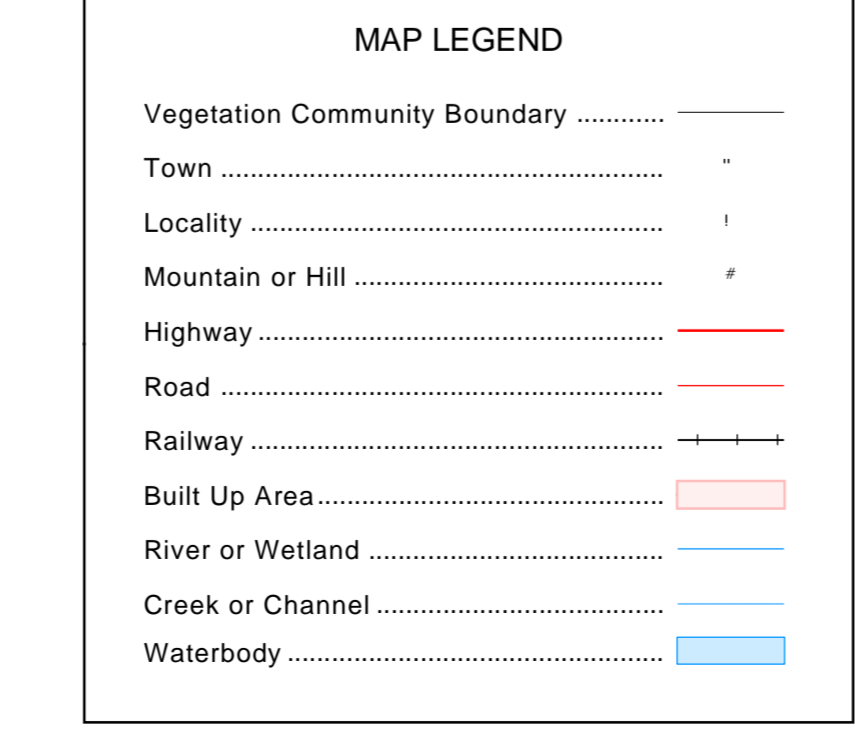
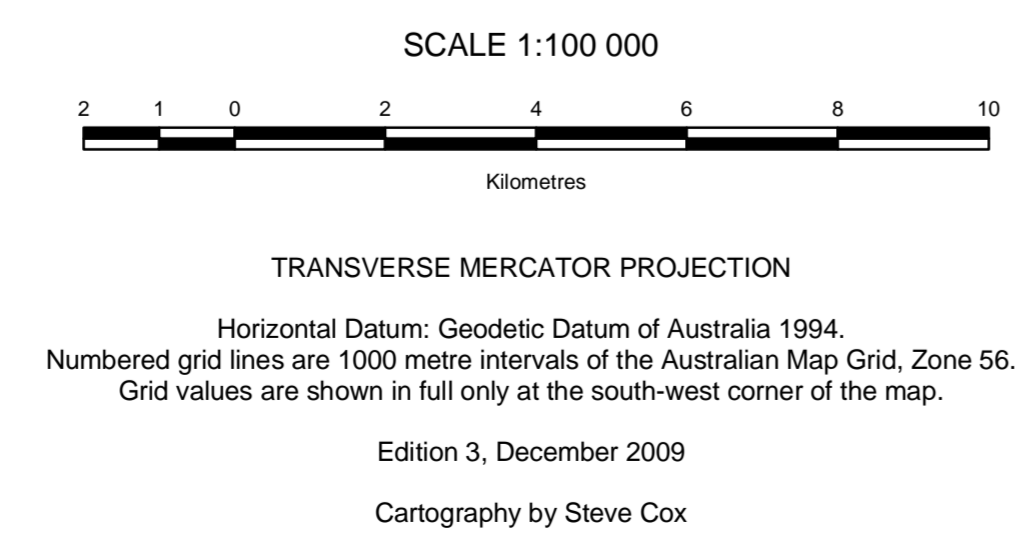
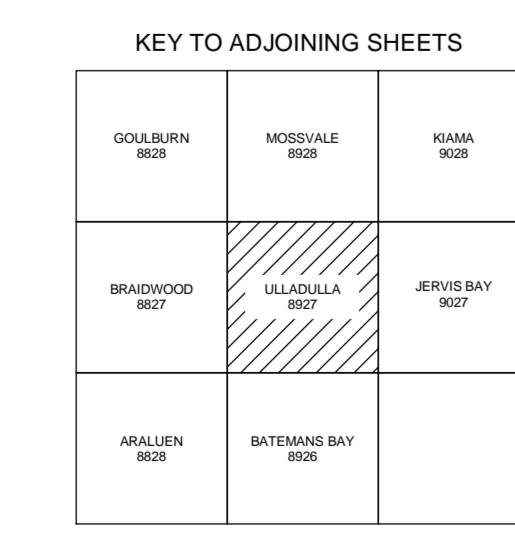
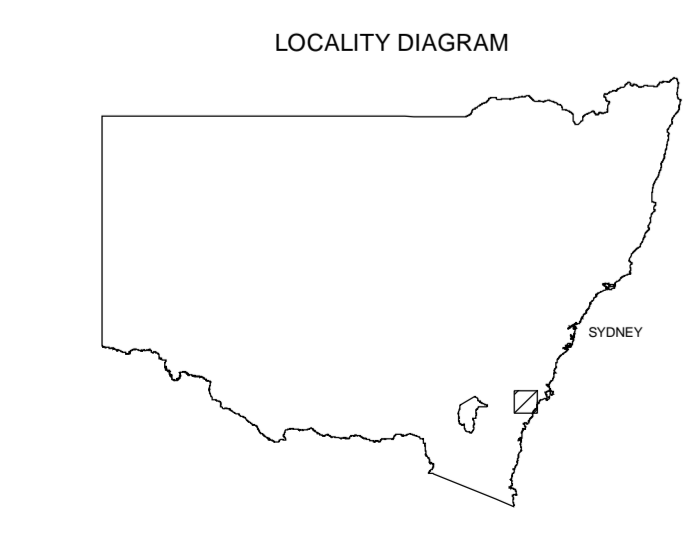


VEGETATION ULLADULLA - 8927

VEGETATION KEY



ANU Map Unit	Principal Species	Vegetation Structure	Physical Environment	Area (%)
101
102
103
104
105
106
107
108
109
110
111
112
113
114
115
116
117
118
119
120
121
122
123
124
125
126
127
128
129
130
131
132
133
134
135
136
137
138
139
140
141
142
143
144
145
146
147
148
149
150
151
152
153
154
155
156
157
158
159
160
161
162
163
164
165
166
167
168
169
170
171
172
173
174
175
176
177
178
179
180
181
182
183
184
185
186
187
188
189
190
191
192
193
194
195
196
197
198
199
200



This map forms part of the Native Vegetation Mapping Report Series 4, NSW Native Vegetation Mapping Program.
Map compiled by staff of the Scientific Services Division, NSW Department of Environment, Climate Change & Water.
* Drainage data supplied by NSW Department of Lands, Panorama Ave Bathurst NSW 2795.
* Geological data supplied by the Department of Mineral Resources, PO Box 536 St Leonards NSW 1590.

The information contained in and on this map has been compiled from several sources and may contain errors and omissions. No warranty or representation, expressed or implied, is made with respect to the accuracy of this information, or its suitability for any purpose. The NSW Department of Environment, Climate Change & Water disclaims all and any liability for any person in respect of anything done or omitted to be done in reliance, whether wholly or in part, upon this information.

This map is only reliable at the published scale of 1:100 000.
Copyright New South Wales Government. All Rights Reserved.
No part of this map may be reproduced without permission.

NSW GOVERNMENT | **Environment, Climate Change & Water**