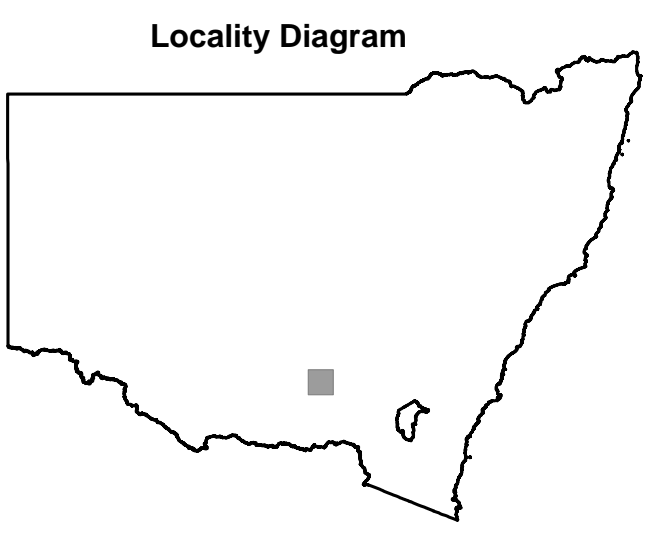
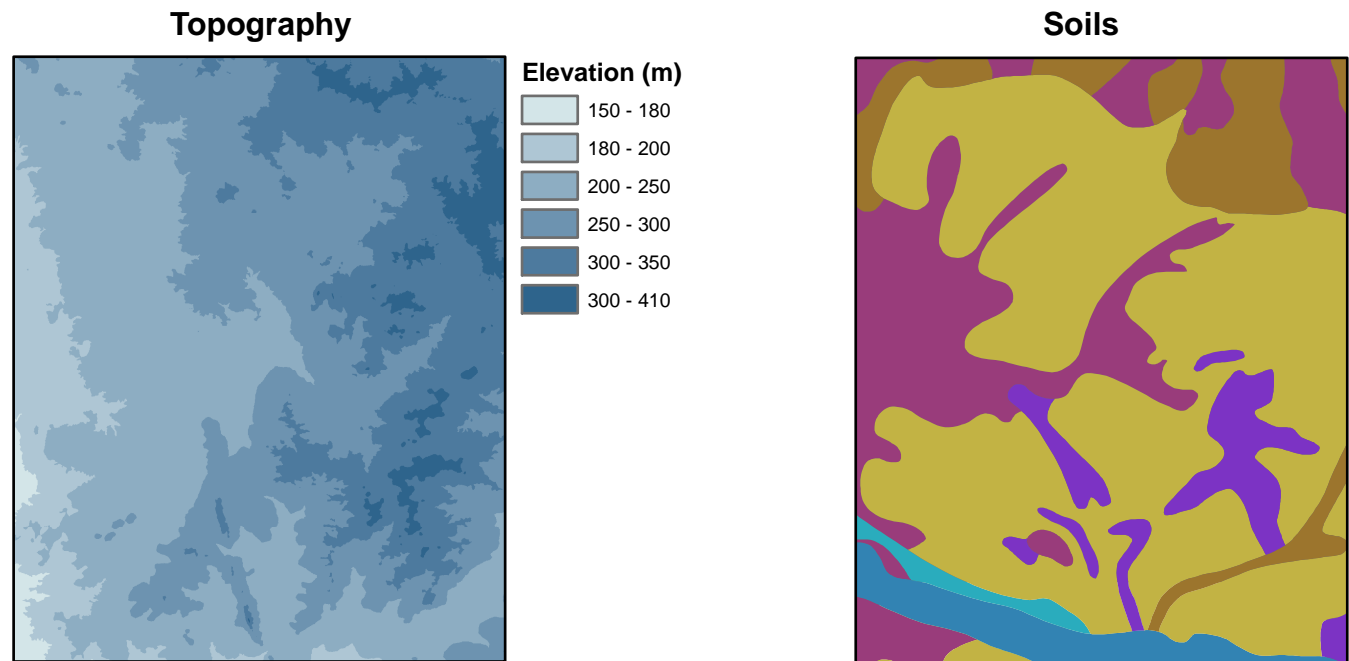
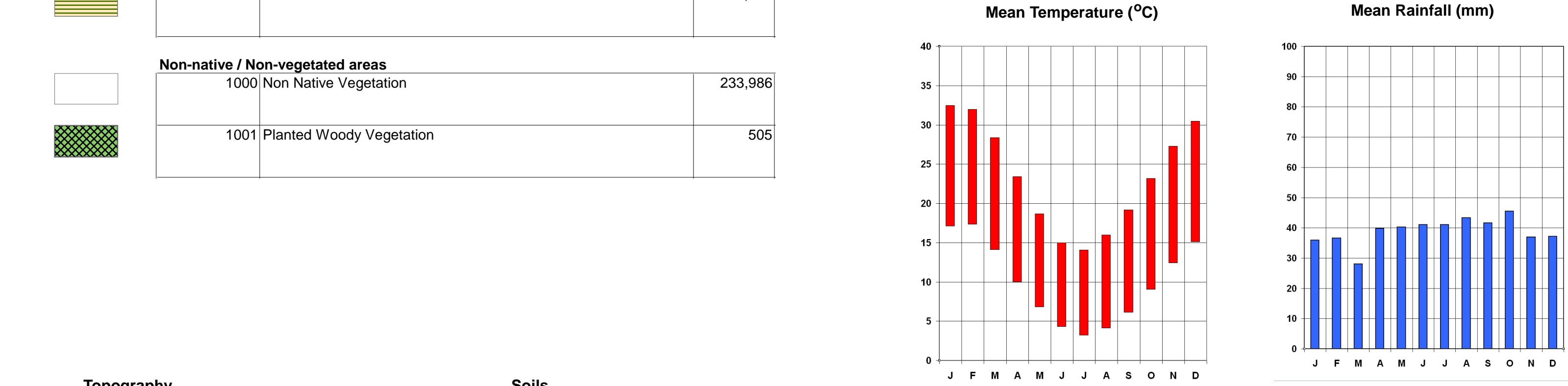
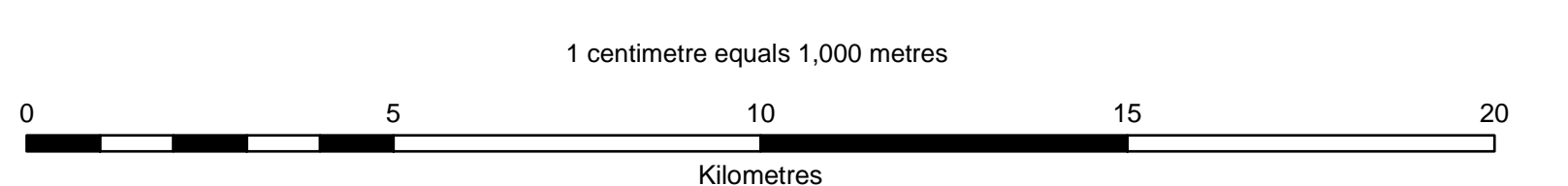


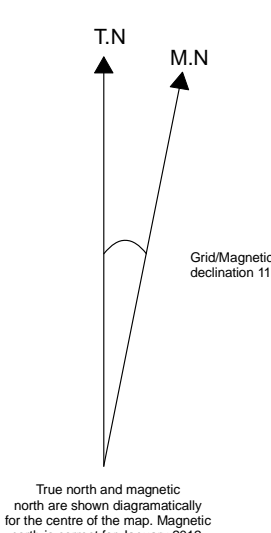
Table with 4 columns: NSW VCA ID, NSW VCA Name, Total Area / Landform pattern / main soil types, and Characteristic species in each stratum. It lists various plant communities such as Grassy Woodlands, Floodplain Transition Woodlands, and Forested Wetlands.



Index to Adjoining Sheets table listing adjacent map sheets and their coordinates.



TRANSVERSE MERCATOR PROJECTION Horizontal Datum: Geographic Datum of Australian 1994. Numbered grid lines are 1000 metre intervals of the Australian Map Grid, Zone 55. Grid values are shown in full only at the south-west corner of the map.



Legend table defining symbols for Town, Locality, Topographic Feature, Roads, Rivers and Wetlands, Cadastre, National Park, and State Forest Estate.

Prepared by: Office of Environment & Heritage, Queanbeyan. Project and technical coordination by Owen Maguire. Digital Aerial Photograph Interpretation undertaken by Cameron Paterson and Marg East. Hard copy map layout by Tobi Edmonds and Rob Armstrong. Mapping was based on the interpretation of ADS40 aerial photography flown in September 2007. Polygons were captured at a scale of 1:6000 with a minimum polygon size of 1 ha (OEH 2011). It is therefore possible to use this mapping at larger scales such as 1:25,000. The work has been assessed and found to have an overall user accuracy of 86% (Ecological 2009, GHD unpub). Plant communities have been classified using the NSW VCA (see Benson et al. 2006, 2008). NSW VCA communities have been grouped in the Legend according to the NSW Vegetation Classes and Formations (see Keith 2004). VCA plant communities form part of the NSW Government's assessment tools such as the Property Vegetation Plan (PVP) developer and the Biobanking Vegetation Types database. For more information on NSW VCA plant communities go to http://www.rbgisd.nsw.gov.au/science/ResearchVegetation\_of\_nsw.

Enquiries should be directed to the Manager, Landscape & Aboriginal Heritage Protection Section, Office of Environment & Heritage, PO Box 733, QUEANBEYAN NSW 2602.

