

# INSECTA MUNDI

A Journal of World Insect Systematics

---

**0332**

A revision of the genus *Acentroptera* Guérin-Méneville, 1844  
(Coleoptera: Chrysomelidae: Cassidinae)

C. L. Staines  
Department of Entomology  
MRC 187  
National Museum of Natural History  
Smithsonian Institution  
Washington, DC 20013-7012, USA

Date of Issue: January 10, 2014

C. L. Staines

A revision of the genus *Acentroptera* Guérin-Méneville, 1844 (Coleoptera: Chrysomelidae: Cassidinae)

*Insecta Mundi* 0332: 1-19

ZooBank Registered: urn:lsid:zoobank.org:pub:AAD2DCEC-2F4D-4E8D-825F-B2754DC13F22

**Published in 2014 by**

Center for Systematic Entomology, Inc.

P. O. Box 141874

Gainesville, FL 32614-1874 USA

<http://www.centerforsystematicentomology.org/>

**Insecta Mundi** is a journal primarily devoted to insect systematics, but articles can be published on any non-marine arthropod. Topics considered for publication include systematics, taxonomy, nomenclature, checklists, faunal works, and natural history. **Insecta Mundi** will not consider works in the applied sciences (i.e. medical entomology, pest control research, etc.), and no longer publishes book reviews or editorials. **Insecta Mundi** publishes original research or discoveries in an inexpensive and timely manner, distributing them free via open access on the internet on the date of publication.

**Insecta Mundi** is referenced or abstracted by several sources including the Zoological Record, CAB Abstracts, etc. **Insecta Mundi** is published irregularly throughout the year, with completed manuscripts assigned an individual number. Manuscripts must be peer reviewed prior to submission, after which they are reviewed by the editorial board to ensure quality. One author of each submitted manuscript must be a current member of the Center for Systematic Entomology. Manuscript preparation guidelines are available at the CSE website.

**Managing editor:** Eugenio H. Nearn, e-mail: [gino@nearns.com](mailto:gino@nearns.com)

**Production editor:** Michael C. Thomas, Brian Armitage, Ian Stocks

**Editorial board:** J. H. Frank, M. J. Paulsen

**Subject editors:** G.B. Edwards, J. Eger, A. Rasmussen, G. Steck, Ian Stocks, A. Van Pelt, J. Zaspel

**Spanish editors:** Julieta Brambila, Angélico Asenjo

**Printed copies (ISSN 0749-6737) annually deposited in libraries:**

CSIRO, Canberra, ACT, Australia

Museu de Zoologia, São Paulo, Brazil

Agriculture and Agrifood Canada, Ottawa, ON, Canada

The Natural History Museum, London, Great Britain

Muzeum i Instytut Zoologii PAN, Warsaw, Poland

National Taiwan University, Taipei, Taiwan

California Academy of Sciences, San Francisco, CA, USA

Florida Department of Agriculture and Consumer Services, Gainesville, FL, USA

Field Museum of Natural History, Chicago, IL, USA

National Museum of Natural History, Smithsonian Institution, Washington, DC, USA

Zoological Institute of Russian Academy of Sciences, Saint-Petersburg, Russia

**Electronic copies (On-Line ISSN 1942-1354, CDROM ISSN 1942-1362) in PDF format:**

Printed CD or DVD mailed to all members at end of year. Archived digitally by Portico.

Florida Virtual Campus: <http://purl.fcla.edu/fcla/insectamundi>

University of Nebraska-Lincoln, Digital Commons: <http://digitalcommons.unl.edu/insectamundi/>

Goethe-Universität, Frankfurt am Main: <http://edocs.ub.uni-frankfurt.de/volltexte/2010/14363/>

**Author instructions** available on the *Insecta Mundi* page at:

<http://www.centerforsystematicentomology.org/insectamundi/>

Copyright held by the author(s). This is an open access article distributed under the terms of the Creative Commons, Attribution Non-Commercial License, which permits unrestricted non-commercial use, distribution, and reproduction in any medium, provided the original author(s) and source are credited. <http://creativecommons.org/licenses/by-nc/3.0/>

---

A revision of the genus *Acentroptera* Guérin-Méneville, 1844 (Coleoptera: Chrysomelidae: Cassidinae)

C. L. Staines

Department of Entomology

MRC 187

National Museum of Natural History

Smithsonian Institution

Washington, DC 20013-7012, USA

stainesc@si.edu

**Abstract.** The species of the genus *Acentroptera* Guérin-Méneville, 1844 are revised. Thirteen species are treated as valid and are illustrated. A neotype is designated for *A. tessellata* Baly. *Acentroptera maculata* Pic from Brazil and *A. rubronotata* Pic from Brazil are treated as *incertae sedis*. *Acentroptera bita* n. sp. and *A. lineata* n. sp. both from Panama are described as new. A key to the 13 treated species is presented. Five species appear to be associated with bromeliads (Bromeliaceae).

**Key words.** *Acentroptera*, Bromeliaceae, key, neotype, new species, revision.

### Introduction

The name *Acentroptera* was first used by Chevrolat (1836) and included the species *A. lacordairei* Dejean and *A. regalis* Chevrolat. Neither species included a description so they are *nomina nuda* (ICZN 1999, Article 12). Guérin-Méneville (1844) validated the name by describing the species *A. dejeanii* from Brazil, *A. norrisii* from Cayenne (French Guiana), and *A. cucullata* and *A. praeusta* from Madagascar. Baly (1858) designated *A. pulchella* (Guérin-Méneville) as the type species of the genus. This designation is not valid since *A. pulchella* was not an originally included species (ICZN 1999, Article 69). Staines (2010) designated *A. dejeanii* as the type species.

The genus has never been revised and there is no published key to the species. Food plants have been reported for *A. basilica* (Monrós and Viana 1947) and *A. pulchella* (Mantovani et al. 2005). The only detailed biological work is Mantovani et al. (2005) and Magalhães et al. (2012). From these three papers and specimen label data five *Acentroptera* species appear to be associated with Bromeliaceae.

### Materials and Methods

For this study, measurements were taken with an ocular micrometer. Pronotal length and width were taken along the midlines. Elytral width was measured at the humeri. Elytral length was measured from the base to the apex. Total length was measured from the base of the antennae to the apex of the elytra. In recording label data from type specimens, a double slash (//) divides data on different labels; brackets ([]) contain addition information concerning the label. Scale bars in all photos are 1mm.

Material was studied from the following collections: American Museum of Natural History (AMNH); B. P. Bishop Museum (BPBM); Brigham Young University (BYU); Carnegie Museum of Natural History (CMNH); University of Costa Rica (UCRC); Deutsche Entomologische Institut (DEI); Instituto Nacional de Biodiversidad (INBio); Museum National d'Histoire Naturelle, Paris (MNHN); Museum für Naturkunde de Humboldt Universität (ZMHB); Museum für Tierkunde, Dresden (STMD); The Natural History Museum (BMNH); National Museum of Natural History, Smithsonian Institution (USNM); Naturhistorisches Museum Wien (NHMW); and the L. Sekerka Collection, Liberea, Czech Republic (LSC); Swedish Museum of Natural History (NRM).

***Acentroptera* Guérin-Méneville 1844**

*Acentroptera* Chevrolat 1836: 388 (*nomen nudum*). Baly 1858: 121 (type species); Chenu and Desmarest 1870: 341 (noted); Chapuis 1875: 307 (redescription).

*Acentroptera* Guérin-Méneville 1844: 271. Type species: *Acentroptera dejeanii* Guérin-Méneville, designated by Staines 2010. Staines 2010: 1 (nomenclature).

*Acentroptera* Thomson 1856: 479 (unjustified emendation).

*Acentroptera* Baly. Gemminger and Harold 1876: 3608 (misattribution, catalog); Chenu 1884: 341 (noted); Donckier 1899: 568 (catalog); Weise 1910: 115 (noted), 1911a: 19 (catalog), 1911b: 26 (catalog); Monrós and Viana 1947: 191 (Argentina species); Guérin 1953: 100 (faunal list); Papp 1953: 50 (catalog); Uhmman 1957: 65 (catalog), 1964a: 412 (catalog); Descarpentries and Villiers 1959: 144 (types); Wilcox 1975: 140 (catalog); Jolivet 1989: 304 (host plant); Jolivet and Hawkeswood 1995: 145 (host plants); Staines and Staines 1999: 522 (Baly species list); Staines 2002a: 746 (genera), 2002b: 1 (noted).

**Generic description.** Moderately sized (5.5-14.6 mm); body elongate; convex; subparallel or slightly expanding apically. Antenna: short; slender; with 11 antennomeres; antennomeres 1-6 or 7 punctate, each puncture with pale seta; 7- or 8 to 11 setose. Pronotum: transverse or quadrate, widest at base; disc highly convex; anterior angle with tooth; anterior margin straight; basal impression present. Scutellum: quadrate. Elytron: lateral margin straight or slightly expanding apically, smooth, margined; exterior apical angle rounded or angulate, not expanded laterally; apical margin with slight lamina; humerus angulate or rounded, slightly produced; with 10 regular rows of punctures plus short scutellar row, an additional row may be present between rows 5 and 6 in middle; with 4 costae, costa 3 or 4 may be obsolete in middle. Venter: with 5 visible abdominal sterna. Leg: short, robust; anterior pair not prolonged; protibia without tooth.

*Acentroptera* belongs to the tribe Sceloenoplini, which contains five genera (Staines 2002a). *Acentroptera* can be distinguished from all other Sceloenoplini by the following combination of characters: body moderately convex; anterior pair of legs as long as other pairs; elytra with exterior apical angle not expanded laterally; and elytra is curved after interspace 6.

**Key to the described species of *Acentroptera***

1. Lateral margin of pronotum angulate in middle ..... **4**  
— Lateral margin of pronotum sinuate or arcuate ..... **2**
- 2(1). Vertex of head impunctate; elytra with additional row of punctures between rows 5 and 6 in middle; orangish-yellow, elytra with reddish-purple vitta; 7.5-8.2 mm; Panama; Fig. 6 ..... ***Acentroptera lineata* Staines, new species**  
— Vertex of head punctate or rugose; elytra without additional row of punctures between rows 5 and 6 ..... **3**
- 3(2). Pronotum with longitudinal medial sulcus; humerus angulate; sutural angle with small tooth; reddish-brown with black markings; 12.1 mm; Brazil; Figure 13 ..... ***Acentroptera zikani* Uhmman**  
— Pronotum without longitudinal medial sulcus; humerus rounded; sutural angle without small tooth; testaceous, apical antennomeres and lateral margin of pronotum darker; 7.3-9.4 mm; Costa Rica, Guatemala, Honduras, Mexico; Fig. 7 .... ***Acentroptera nevermanni* Uhmman**
- 4(1). Sutural angle notched ..... **5**  
— Sutural angle not notched ..... **7**
- 5(4). Humerus angulate; antennomere 1 transverse; elytra with additional row of punctures between rows 5 and 6 in middle; reddish-yellow, elytra with dark markings; 5.5 mm; Panama; Fig. 2 .

- ..... *Acentroptera bita* Staines, new species  
 — Humerus rounded; antennomere 1 subglobose; elytra without additional row of punctures between rows 5 and 6 ..... 6
- 6(5). Pronotum with longitudinal medial sulcus; antennomere 1 shorter than 2; brownish-red, elytra with alternate interspaces paler; 8.6-10.0 mm; Bolivia, Brazil, Colombia, Ecuador, Panama, Peru; Fig. 4 ..... *Acentroptera emdeni* Uhmman  
 — Pronotum without longitudinal medial sulcus; antennomere 1 subequal to 2; uniformly yellowish, pronotum with lateral and medial longitudinal vittae, elytra with elongate darker spots; 7.7 mm; Brazil, Fig. 12 ..... *Acentroptera tessellata* Baly
- 7(4). Vertex of head impunctate; testaceous, pronotum with brown medial vitta; 6.7-9.1 mm; Costa Rica, Panama; Fig. 11 ..... *Acentroptera strandi* Uhmman  
 — Vertex of head punctate or rugose ..... 8
- 8(7). Vertex of the head rugose ..... 9  
 — Vertex of the head punctate ..... 10
- 9(8). Sutural angle of elytra without tooth; reddish, pronotum with wide dark vitta on lateral margins and narrower medial longitudinal vitta, elytra yellowish with red margins and dark humeral band and transverse oblique band near posterior margin; 10.4-11.5 mm; Brazil, French Guiana; Fig. 8 ..... *Acentroptera norrisii* Guérin-Méneville  
 — Sutural angle of elytra with small tooth; dark, elytra brownish-red with darker sublateral and sutural vittae (which sometimes unite or may be absent); 9.5-11.3 mm; Ecuador; Fig. 9 .....  
 ..... *Acentroptera ohausi* Weise
- 10(8). Pronotum without medial longitudinal carina or sulcus ..... 11  
 — Pronotum with medial longitudinal carina or sulcus ..... 12
- 11(10). Elytra with humerus rounded; yellowish-brown, pronotum with 3 longitudinal vittae, elytra pale yellow with lateral margin, suture, humerus, and apex darker plus 2 large dark maculae along sutural margin; 9.7-14.6 mm; Brazil; Fig. 10 .....  
 ..... *Acentroptera pulchella* (Guérin-Méneville)  
 — Elytra with humerus angulate; metallic blue-black, pronotum with 3 longitudinal vittae, elytra with large yellow transverse band on apical 1/3; 11.0-14.0 mm; Colombia, Brazil; Fig. 3 .....  
 ..... *Acentroptera dejeanii* Guérin-Méneville
- 12(10). Elytra with humerus rounded; pronotum reddish-brown with 3 dark longitudinal vittae, elytra shiny reddish-brown with 3 dark oblique bands; 11.0-12.0 mm; Argentina, Brazil, French Guiana, Paraguay; Fig. 1 ..... *Acentroptera basilica* Thomson  
 — Elytra with humerus angulate; reddish-yellow; pronotum with three dark vittae, elytra with lateral margins dark and narrow dark transverse band present behind middle and at apex; 12.0-13.0 mm; Bolivia, Brazil; Fig. 5 ..... *Acentroptera lacordairei* Lucas

***Acentroptera basilica* Thomson**

Fig. 1

*Acentroptera basilica* Thomson 1856: 479 (type: Brazil, depository unknown).*Acentroptera basilica* Thomson. Baly 1858: 124 (noted); Gemminger and Harold 1876: 3608 (catalog); Donckier 1899: 568 (catalog); Weise 1911a: 19 (catalog), 1911b: 27 (catalog); Monrós and Viana 1947: 191 (Argentina species); Guérin 1953: 100 (faunal list); Papp 1953: 50 (catalog); Uhmman 1957: 66 (catalog), 1959: 622 (noted), 1964a: 412 (catalog), 1964b: 6 (faunal list); Roig-Juñent 2004: 119 (faunal list); Santiago-Blay 2004: 53 (host plant); Staines 2010: 1 (noted).

*Acentroptera basilica reducta* Pic 1932: 14 (type: America Meridionale, MNHN). Papp 1953: 50 (catalog); Uhmman 1957: 66 (catalog), 1964a: 412 (catalog); Descarpentries and Villiers 1959: 144 (types).

**Description.** Elongate; subparallel; convex; head (except black mandibles and labrum), antennae (except antennomeres 8-11 black), and legs chestnut-brown; eyes and scutellum black; pronotum shiny reddish-brown with medial 3 black (with bluish reflections) longitudinal vittae- 1 medial and 2 lateral; elytra shiny reddish-brown with 3 shining black oblique vittae from lateral to sutural margins; venter and legs reddish. Head: vertex strongly, densely punctate, medial carina present; not depressed between eyes; tooth present between antennal bases; frons impunctate, not tuberculate. Antenna: barely reaching beyond humeral angle; antennomere 1 small, subglobose; 2 obconic, longer than 1; 3-4 cylindrical, subequal in length, each nearly as long as 1 and 2 combined; 5-7 obconic, subequal in length, each  $\frac{1}{4}$  length of 4; 8-10 transverse, each shorter than 7; 11 longer than 10, pointed at apex; 1-7 punctate; 8-11 setose. Pronotum: longer than wide; transversely convex; lateral margin straight for basal  $\frac{1}{3}$ , slightly angulate in middle then sinuate and converging to anterior angle; anterior angle with large blunt tooth; posterior angle acute; surface strongly punctate; medial longitudinal carina present from base to apex; transverse medial impression present just behind middle; pronotal length 2.6-2.9 mm; pronotal width 3.1-3.5 mm. Scutellum: quadrate; micropunctate. Elytron: lateral margin sinuate, smooth; exterior apical angle rounded; apical margin slightly laminate, smooth; sutural angle with small tooth; humerus rounded; strongly punctate-striate; with four costae, costae carinate; elytral length 9.6-9.8 mm; elytral width 4.8-5.2 mm. Venter: prosternum depressed between procoxae; pro- and mesosterna punctate; metasternum impunctate; abdominal sterna impunctate; suture between sterna 1 and 2 totally obsolete. Leg: punctate; tibia with fringe of setae on inner apical margin. Total length: 11.0-12.0 mm.

**Discussion.** Baly (1858) thought *A. basilica* may be a synonym of *A. pulchella*, but he had not seen any specimens of the later species. However, Thomson's (1856) description is very detailed and is definitely refers to a separate species. Monrós and Viana (1947) obtained specimens from Argentina and Paraguay that agree with the original description, which have been examined. Requests from major museums in Europe (BMNH, DEI, MNHN, and ZMHB) failed to locate additional specimens. While a case could be made for the designation of a neotype, the nomenclatural status of the species is firmly established in the literature and therefore does not meet the requirements of Article 75 (ICZN 1999).

**Host plant.** *Ananas macrodens* E. Morren (Bromeliaceae) (Monrós and Viana 1947).

**Distribution.** Argentina, Brazil (Rio de Janeiro, São Paulo), French Guiana, Paraguay.

**Specimens examined: Argentina:** Misiones- Guaraní- El Soberbio, October 1948 (USNM); Concept., Sta. Maria, October 1946 (USNM). **Brazil:** Rio de Janeiro- no further data (BMNH). Total: 10.

**Literature records. Argentina:** Chaco- Puerto Tirol; Picada Venturini, April 1936 (from Monrós and Viana 1947). **Paraguay:** Alto Parana- Puerto Bertoni (from Monrós and Viana 1947).

### *Acentroptera bita* Staines n. sp.

Fig. 2

Holotype male: R.P, Panama Pr, Cerro Campana, 17-VII-1978// N. E. Woodley Collector// Holotype *Acentroptera bita* Staines, des. C. L. Staines 2013 [red label] (USNM).

**Description.** Elongate; parallel-sided; subdepressed; small; reddish-yellow; eyes dark; elytra with various dark markings. Head: vertex alutaceous, medial fovea present; not depressed between eyes; triangular projection present between antennal bases; frons finely punctate, slightly tuberculate. Antenna: reaches to humerus; slender; antennomere 1 transverse,  $\frac{1}{2}$  length of 2; 2-7 elongate, expanding apically; 3  $1\frac{1}{2}$ x length of 2; 4 subequal in length to 2; 5-7 decreasing in length; 8-10 transverse, subequal in length, each  $\frac{3}{4}$  length of 7; 11 slightly longer than 10, acutely pointed at apex; 1-7 sparsely punctate; 8-11 setose.



Pronotum: subquadrate; convex; lateral margin bisinuate, angulate in middle, narrowly margined; anterior angle angulate, not produced; posterior angle acute; surface densely punctate; crescent-shaped basal impression present; pronotal length 0.9 mm; pronotal width 1.1 mm. Scutellum: quadrate; punctate. Elytron: lateral margin straight, smooth, narrowly margined; exterior apical angle angulate; apical margin sinuate, laminate, smooth; sutural angle notched, without tooth; humerus angulate; with an additional puncture row present between rows 5 and 6 in middle plus short scutellar row; interspaces 2, 4, and 6 costate, 8 costate on base and apex; elytral length 4.3 mm; elytral width 1.8 mm. Venter: pro- and mesosterna impunctate medially, punctate laterally; metasternum and abdominal sterna impunctate; apical margin of last abdominal sternite without fringe of setae. Leg: punctate; glabrous; tibia with fringe of setae on inner apical margin. Total length 5.5 mm.

**Etymology.** From *bita* (Anglo-Saxon) meaning small or little for the unusually small size of this species.

**Host plant.** Unknown.

**Distribution.** Panama.

### *Acentroptera dejeanii* Guérin-Ménéville

Fig. 3

*Acentroptera dejeanii* Guérin-Ménéville 1844: 271 (type: Brazil, depository unknown). Baly 1858: 123 (noted); Gemminger and Harold 1876: 3608 (catalog); Weise 1911a:19 (catalog), 1911b: 27 (catalog); Guérin 1953: 100 (faunal list); Papp 1953: 50 (catalog); Uhmann 1957: 66 (catalog), 1966: 272 (noted); Staines 2010: 1 (type species).

*Acentroptera dejeani* Guérin-Ménéville. Donckier 1899: 568 (catalog).

*Acentroptera alapista* Thomson 1856: 479 (type: Brazil, depository unknown). Baly 1858: 123 (synonymy); Staines 2010: 1 (noted).

**Description.** Elongate; subparallel; convex; metallic blue-black; antennae and front of head reddish; pronotum reddish, margined with greenish-black, with medial longitudinal black vitta; elytra with large yellow transverse band on apical 1/3; venter reddish; legs (except red femora) black. Head: vertex densely punctate, medial sulcus present; carina present between antennal bases; not depressed between eyes; frons punctate, slightly tuberculate; clypeus alutaceous. Antenna: reaches to humerus; antennomere 1 subglobose, subequal in length to 2; 2 expanding to apex; 3 cylindrical, 1½x length of 2; 4 ¾ length of 3, expanding to apex; 5-6 expanding to apex, decreasing in length; 7-10 transverse, subequal in length, each slightly shorter than 6; 11 1½x length of 10, broadly rounded at apex. Pronotum: quadrate; convex; lateral margin sinuate, angulate just posterior to middle, narrowly margined; anterior angle angulate, slightly produced; posterior angle oblique; surface coarsely, densely punctate; transverse basal impression present medially; pronotal length 2.7 mm; pronotal width 2.7 mm. Scutellum: quadrate; micropunctate. Elytron: lateral margin slightly expanding apically, smooth, margined; apex rounded, slightly laminate; sutural angle with minute tooth; humerus angulate; regularly punctate-striate; quadricostate, costa 2 strongly developed on basal 2/3; elytral length 8.1-8.5 mm; elytral width 4.7-5.0 mm. Venter: prosternum punctate medially, impunctate laterally; meso- and metasterna impunctate medially, punctate laterally; abdominal sterna sparsely punctate, each puncture with pale seta. Leg: punctate; tibia with each puncture with pale seta, with fringe of setae on inner apical margin. Total length: 11.0-14.0 mm.

**Discussion.** Baly (1858) merely repeated Guérin-Ménéville's (1844) original description, which is detailed enough to confidently assign specimens to the species name. Since the original description was based on specimens from the Chevrolat and Dejean collections, which were widely dispersed, the type specimen may exist in a smaller museum in Europe. Therefore a neotype designation is not justified at this time.

**Host plant.** Unknown.

**Distribution.** Colombia (from Uhmman 1957), Brazil (Rio de Janeiro).

**Specimens examined:** no label data (USNM). **Brazil:** no data (BMNH). Rio de Janeiro- no further data (NHMW). Total: 3.

### *Acentroptera emdeni* Uhmman

Fig. 4

*Acentroptera emdeni* Uhmman 1930b: 152 (type: [Colombia] Bogota, coll. Kirsch [green label]// Holotype [red handwritten label]// *Acentroptera emdeni* Uh 1929, Uhmman det 1940// Museum für Tierkunde Dresden MTD). Uhmman 1943: 116 (noted), 1957: 66 (catalog); Papp 1953: 50 (catalog); Staines 1997: 411 (Uhmman species list).

**Description.** Elongate; parallel-sided; elytra much wider than pronotum; brownish-yellow with darker sheen, antennae, pro-, meso-, and metasterna black, abdomen partly dark. Head: vertex rugose; depressed between eyes; tubercle present between antennal bases; frons and clypeus sparsely punctate. Antenna: as long as head and pronotum combined, thickening apically; antennomere 1 subglobose; 2 transverse; 3 2x length of 1, elliptical; 4-7 elliptical, decreasing in length; 8-10 transverse; 11 2x length of 10, pointed at apex; 1-7 sparsely punctate; 8-11 setose. Pronotum: subquadrate; disc convex; lateral margin straight basally, angulate medially then narrowing to anterior angle, narrowly margined; anterior angle prominent, with blunt tooth; posterior angle acute; surface strongly, densely punctate; smooth longitudinal medial impressed line present; with slight transverse impression laterally at middle; transverse basal impression present medially; pronotal length 1.4-1.5 mm; pronotal width 1.4-1.6 mm. Scutellum: quadrate; finely punctate. Elytron: lateral margin weakly expanding apically, smooth; apex subtruncate, smooth; sutural angle notched, with small tooth; humerus rounded; regularly punctate-striate; weakly quadricostate, costa 2 most produced; costa 3 interrupted in middle; elytral length 6.1-6.4 mm; elytral width 2.7 mm. Venter: pro-, meso-, and metasterna impunctate medially, punctate laterally; abdominal sterna irregularly punctate, each puncture with pale seta; sternite 5 with fringe of setae at apex. Leg: punctate, each puncture with pale seta; tibia with fringe of setae on inner apical margin. Total length: 8.6-10.0 mm.

**Host plant.** Unknown.

**Distribution.** Bolivia, Brazil (Rio de Janeiro), Colombia, Ecuador, Panama, Peru.

**Specimens examined:** **Brazil:** Rio de Janeiro- no further data (USNM). **Colombia:** Distrito Capital-Bogotá (MTD). **Ecuador:** Loja- Loja (USNM). **Panama:** Chiriquí- La Fortuna, 9-1100 m, Rio Hornito Trail, 15 February 2001 (LSC). **Peru:** Cuzco- Marcapata, 3200 m, 14 October 1976 (USNM). Total 5.

### *Acentroptera lacordairei* Lucas

Fig. 5

*Acentroptera lacordairei* Dejean 1836: 388 (*nomen nudum*).

*Acentroptera lacordairei* Lucas 1859: 193 (type: Brazil, depository unknown). Gemminger and Harold 1876: 3608 (catalog); Donckier 1899: 568 (catalog); Weise 1911a: 19 (catalog), 1911b: 27 (catalog); Papp 1953: 50 (catalog); Uhmman 1957: 66 (catalog).

**Description.** Elongate; parallel-sided; subconvex; yellowish; head with clypeus and eyes black; antennae reddish; pronotum with longitudinal medial black vitta and black lateral margins; scutellum black; elytra with lateral margins black, markings extending to humeri, narrow black transverse band present behind middle and at apex; venter yellowish-brown. Head: vertex punctate, medial sulcus present; not depressed between eyes; tooth present between antennal bases; frons and clypeus sparsely punctate.



Antenna: reaches to humerus; antennomere 1 subglobose; 2 elongate, slightly longer than 1; 3-4 elongate, 3 subequal in length to 1 and 2 combined, 4 slightly shorter than 3; 5-7 expanding to apex, subequal in length, each shorter than 4; 8-10 transverse, subequal in length, each shorter than 7; 11 longer than 10, bluntly pointed at apex; 1-6 sparsely punctate; 7-11 setose. Pronotum: transverse; convex laterally, flattened on disc; lateral margin bisinuate, angulate in middle, narrowly margined; anterior angle with large blunt tooth; posterior angle acute; surface covered with deep punctures, especially laterally, less punctate on disc; with longitudinal narrow impunctate area near middle; longitudinal medial sulcus present on basal  $\frac{1}{2}$ ; slight transverse basal impression present medially; pronotal length 2.2-2.5 mm; pronotal width 3.0-3.2 mm. Scutellum: quadrate; impunctate. Elytron: lateral margin smooth, slightly expanding to apex; exterior apical angle rounded; sutural angle with small tooth; humerus angulate; interspaces 4 and 6 costate for entire length, 8 costate on apical  $\frac{1}{2}$ , 2 only slightly raised; elytral length 9.5-9.8 mm; elytral width 4.0-4.6 mm. Venter: pro-, meso-, and metasterna impunctate medially, sparsely punctate laterally; abdominal sterna sparsely punctate, each puncture with pale seta; apical sternite with fringe of setae at apex. Leg: punctate, each puncture with pale seta; tibia with fringe of setae on inner apical margin. Total length: 12.0-13.0 mm.

**Discussion.** Lucas' (1859) description of this species plus the detailed color illustrations provide sufficient enough to confidently assign specimens to the species name. The type of the species may be hidden somewhere in the MNHN but curators could not find the specimens. Also it is not clear from the original description if the species was described from specimens in the Dejean collection (which has been widely dispersed) or from ones collected by the Castelnau expedition. Until this is resolved, the designation of a neotype is not justified.

**Host plant.** Unknown.

**Distribution.** Bolivia, Brazil (Espírito Santo).

**Specimens examined:** no data (BMNH). **Bolivia:** Santa Cruz- Florida, Refugio los Volcanes, 9-13 December 2008 (LSC). **Brazil:** Espírito Santo- no further data (BMNH). Total: 4.

***Acentroptera lineata* Staines n. sp.**

Fig. 6

Holotype male: R. P., Panama Pr., Cerro Campana, 19-VIII/1978// N. E. Woodley Collector// Holotype *Acentroptera lineata* Staines, des. C. L. Staines 2012 [red label] (USNM). Paratype female: Panama, Panama prov., PN Altos de Campana, Cerro Campana, 17.vii.2009, 8°40'N, 79°55'W, 1000 m, Bromeliaceae sp., L. Sekerka and D. Windsor lgt [green printed label]// Paratype *Acentroptera lineata* Staines, des. C. L. Staines 2013 [red label] (LSC).

**Description.** Elongate; parallel-sided; convex; orangish-yellow with reddish-purple vitta from humerus curving to suture at apex. Head: vertex alutaceous, faint medial sulcus present; not depressed between eyes; keel present between antennal bases; frons impunctate, slightly tuberculate. Antenna: reaches to humerus; slender; antennomere 1 subglobose,  $\frac{1}{2}$  length of 2; 2-4 elongate, expanding apically, subequal in length; 5 elongate, expanding apically, slightly shorter than 4; 6 elongate, expanding apically,  $\frac{3}{4}$  length of 5; 7-10 transverse, subequal in length, each shorter than 6; 11 2x length of 10, pointed at apex; 1-7 sparsely punctate; 8-11 setose. Pronotum: subquadrate; convex; lateral margin shallowly sinuate, not angulate in middle, margined; anterior angle with rounded tooth; posterior angle acute; surface coarsely punctate; disc with longitudinal medial sulcus; transverse basal impression present medially; pronotal length 1.4-1.5 mm; pronotal width 1.4-1.7 mm. Scutellum: quadrate; punctate. Elytron: lateral margin straight, smooth, margined; exterior apical angle rounded; apical margin sinuate, laminate, smooth; sutural angle without tooth; humerus rounded; interspaces 2, 4, 6, and 8 costate; elytral length 5.7-6.2 mm; elytral width 2.3-2.4 mm. Venter: pro-, meso-, and metasterna impunctate; abdominal sterna

impunctate; apical margin of last sternite with fringe of setae. Leg: punctate; tibia with fringe of setae on inner apical margin. Total length 7.5-8.2 mm

**Etymology.** From *linea* (Latin) meaning line or stripe for the elytral vittae of this species.

**Host plant.** Adults have been collected from an unidentified bromeliad (Bromeliaceae).

**Distribution.** Panama.

### ***Acentroptera maculata Pic incertae sedis***

*Acentroptera maculata* Pic 1932: 14 (type: Brazil, Therezopolis, depository unknown). Papp 1953: 50 (catalog); Uhmman 1957: 66 (catalog), 1964a: 412 (catalog); Descarpentries and Villiers 1959: 144 (types).

**Description.** Translation of Pic (1932): Somewhat elongate, shining, pronotum testaceous with three green vittae, extensively and densely punctate; scutellum black; elytra in many individuals with scattered green maculae, strongly and externally tricostate Total length 10 mm.

This species differs from *A. basilica* Thomson by the regular punctation of the pronotum on each side and the elytra with a distinct vitta on the lateral margin, a nearly square humeral macula, followed by two short lines arranged obliquely, a somewhat elongate macula and postmedial disc, followed by a short line presutural an irregular subtransverse macula before apex, these greenish-black.

**Discussion.** The type of this species could not be located in the M. Pic collection in the MNHN (A. Mantilleri, per. com.). I have been unable to locate determined specimens of this species or any specimens fitting this description and the original description is too superficial to determine the placement of the species. Until the type is located, the species should be treated as *incertae sedis* (ICZN 1999, Art. 67.2.5).

**Host plant.** Unknown.

**Distribution.** Brazil.

### ***Acentroptera nevermanni Uhmman***

Fig. 7

*Acentroptera nevermanni* Uhmman 1930a: 244 (Holotype: Costa Rica, F. Nevermann, VII-23 [green label]// Coronado, 1400-1500 m, T. Assmann leg. [reversed green label]// an Gebusch// Type No. 54599 USNM [orange label]// Holotype [red label]// *Acentroptera nevermanni* n. sp. (USNM)). Uhmman 1943: 116 (noted), 1957: 66 (catalog); Papp 1953: 50 (catalog); Wilcox 1975: 140 (catalog); Staines and Staines 1997: 14 (types); Staines 1997: 411 (Uhmman species list).

**Description.** Elongate; subparallel; convex; testaceous, apical antennomeres and lateral margin of pronotum darker; venter black; meso- and metafemora diffuse black. Head: vertex coarsely punctate, medial sulcus present; not depressed between eyes; tooth present between antennal bases; frons with carina, notched, impunctate; clypeus sparsely punctate, carinate. Antenna: reaches to humerus; antennomere 1 subglobose, 2x length of 2; 2 robust, cylindrical; 3-5 cylindrical, each narrower and shorter than 2; 6-7 transverse, subequal in length; 8-10 transverse, subequal in length and width, each wider than 7; 11 pointed at apex, subequal in length to 10; 1-7 sparsely punctate; 8-11 setose. Pronotum: transverse; convex; lateral margin evenly arcuate from base to apex, narrowly margined; anterior angle with flat, obtuse tooth; posterior angle rounded; surface densely, coarsely punctate except area in middle of disc; slight transverse basal impression present; pronotal length 1.3-1.6 mm; pronotal width 1.4-1.7 mm. Scutellum: quadrate; impunctate. Elytron: lateral margin smooth, margined; exterior apical angle

rounded, smooth; apical margin slightly sinuate, slightly laminate, smooth; sutural angle without tooth; humerus rounded, slightly constricted behind humerus; with punctures quadrate; interspace 4 wide, slightly costate; 6 costate at base and apex; 8 costate for entire length; elytral length 5.7-6.0 mm; elytra width 2.3-2.7 mm. Venter: prosternum impunctate medially, punctate laterally; mesosternum punctate; metasternum impunctate; abdominal sterna impunctate; apical margin of last sternite notched in middle with fringe of setae in notch. Leg: impunctate; tibia with fringe of setae on inner apical margin. Total length: 7.3-9.4 mm.

**Host plant.** Adults have been collected from bromeliads (Bromeliaceae).

**Distribution.** Costa Rica, Guatemala, Honduras, Mexico.

**Specimens examined: Costa Rica:** unknown locality- with bromeliad plants, 11 May 1961 (USNM); at Miami, Florida, 6 June 1975, ex. bromeliad (USNM); at Miami, Florida, 6 December 1976 ex. bromeliad (USNM). Guanacaste- Guacamaya, May 1926 (UCRC); Río San Lorenzo, 1050 m, Tierras Morenas, Z. P. Tenorio, 28 March- 21 April 1992, April 1992 (INBio). Heredia: ACC VA Barva, San Jose de la Montaña, Estacion Barva, 1 November 1989, 1 May 1990 (INBio); 16 km SSE La Virgen, 1050-1150 m, malaise trap, 21 February 2001 (INBio); San Antonio de Belén, 3 May 1983 (UCRC). Puntarenas- Coronado, July 1923 (USNM); San Luis, R. B. Monteverde, May 1993, March 1995 (INBio). San José- La Palma, 1400 m (USNM). **Guatemala:** 13 February 1964, intercepted at Miami (USNM); 21 May 1973, intercepted at Miami (USNM). **Honduras:** Francisco Morazan- Lepaterique, Las Grades, 31 May 1993 (USNM). **Mexico:** unknown locality- at Nogales Arizona, 16 January 1978, ex. bromeliad (USNM). Chiapas- 33.7 mi n. Huixtla, 6000', 26-27 February 1966 (USNM). Total: 18.

### *Acentroptera norrisii* Guérin-Ménéville

Fig. 8

*Acentroptera norrisii* Guérin-Ménéville 1844: 271 (type: Cayenne, depository unknown). Baly 1858: 123 (noted); Gemminger and Harold 1876: 3608 (catalog); Donckier 1899: 568 (catalog); Weise 1911a: 19 (catalog), 1911b: 27 (catalog); Papp 1953: 50 (catalog); Uhmann 1957: 66 (catalog), 1966: 272 (noted); Staines 2010: 1 (noted).

**Description.** Elongate; parallel-sided; subconvex; reddish; venter yellowish; head yellowish; antennae reddish, apical 4 antennomeres darker; pronotum with wide black vitta on each lateral margin and narrower medial longitudinal vitta; elytra yellowish with red margins and black humeral band and transverse oblique band near posterior margin; legs pale red. Head: vertex strongly rugose, medial sulcus present; not depressed between eyes; tooth present between antennal bases; frons impunctate, tuberculate. Antenna: short, as long as head and pronotum combined; antennomere 1 cylindrical, robust, shorter than 2; 2-7 cylindrical, elongate, decreasing in length, 3 longest; 8-10 transverse, subequal in length; 11 slightly longer than 10, bluntly pointed at apex; 1-7 punctate, each puncture with pale seta; 8-11 setose. Pronotum: transverse; convex; lateral margin sinuate, angulate in middle; anterior angle with rounded tooth; posterior angle acute; surface strongly rugose, coarsely punctate; medial longitudinal sulcus from base to apex; slight basal impression present; pronotal length 1.9-2.2 mm; pronotal width 2.3-2.7 mm. Scutellum: quadrate; punctate. Elytron: elongate; lateral and apical margins smooth; exterior apical angle rounded; sutural angle without tooth; humerus angulate; strongly punctate-striate; quadricostate, costae strongly produced, costae 1 and 3 unite on apical 1/5; elytral length 7.7-8.2 mm; elytral width 3.7-4.3 mm. Venter: pro- and mesosterna impunctate medially, punctate laterally; metasternum and abdominal sterna impunctate. Leg: impunctate. Total length 10.4-11.5 mm.

**Discussion.** Baly (1858) merely repeated Guérin-Ménéville's (1844) original description, which is detailed enough to confidently assign specimens to the species name. Since the original description was based on specimens from the Chevrolat and Dejean collections, which were widely dispersed, the type

specimen may exist in a smaller museum in Europe. Therefore a neotype designation is not justified at this time.

**Host plant.** Unknown.

**Distribution.** Brazil (Parana, Rio de Janeiro, Santa Catharina, São Paulo), French Guiana.

**Specimens examined. Brazil:** no further data (NHMW). Parana- Ronlandia, November 1947 (AMNH). Rio de Janeiro- no further data (NHMW). Santa Catharina- no further data (BPBM). São Paulo- 19 December (NHMW). Total: 7.

### *Acentroptera ohausi* Weise

Fig. 9

*Acentroptera ohausi* Weise 1910: 116 (Syntype: Ecuador, Loja, 3000 m, Ohaus S.// Cotype USNM 432152 [orange label]// *Acentroptera ohausi* Weise, cotype (USNM)). Weise 1911a: 19 (catalog), 1911b: 27 (catalog); Papp 1953: 50 (catalog); Uhmman 1957: 66 (catalog); Staines and Staines 1997: 16 (types).

**Description.** Elongate; subconvex; slightly expanding apically; shining; black, femora and tibiae sometimes reddish-yellow, elytra brownish-red with a black sublateral and sutural vitta which sometimes unite or may be absent. Head: vertex rugosely punctate, medial sulcus present; depressed between eyes; small tooth present between antennal bases; frons micropunctate, carinate; clypeus punctate. Antenna: reaches to humerus; antennomere 1 subglobose; 2 elongate, expanding to apex,  $1\frac{1}{2}x$  length of 1; 3 cylindrical, slightly longer than 2; 4-7 elongate, elliptical, decreasing in length, 4 shorter than 3; 8-10 transverse, subequal in length; 11 longer than 10, pointed at apex; 1-7 punctate; 8-11 setose. Pronotum: transverse; convex; lateral margin bisinuate, angulate in middle, narrowly margined; anterior angle with blunt tooth; posterior angle acute; with longitudinal medial sulcus from base to middle; surface densely punctate; transverse basal impression present medially; pronotal length 2.1 mm; pronotal width 2.3 mm. Scutellum: quadrate; micropunctate. Elytron: lateral margin smooth, narrowly margined; exterior apical angle rounded, smooth; apical margin sinuate, slightly laminate; sutural angle with small tooth; humerus angulate; regularly punctate-striate; quadricostate, costae weakly produced, complete; elytral length 7.7-8.2 mm; elytral width 3.0-3.7 mm. Venter: pro- and mesosterna punctate; metasternum punctate medially, rugose laterally; abdominal sterna sparsely punctate, each puncture with pale seta; last sternite with fringe of pale setae on apical margin. Leg: punctate, each puncture with pale seta; tibia with fringe of setae on inner apical margin. Total length 9.5-11.3 mm.

**Discussion.** Weise's (1910) description is detailed enough to confidently assign specimens to this species name. Also there are syntypes in two major collections (USNM, ZMHB) so that the designation of a lectotype is not justified.

**Host plant.** Adults have been collected from a bromeliad (Weise 1910) (Bromeliaceae).

**Distribution.** Ecuador.

**Specimens examined. Ecuador:** Loja- Loja, (USNM); Loja 3000 m (USNM). Total: 2.

### *Acentroptera pulchella* Guérin-Méneville

Fig. 10

*Hispa pulchella* Guérin-Méneville 1830: 141 (type: Brazil, Santa Catherina, depository unknown). Guérin-Méneville 1838: 233 (noted); Uhmman 1966: 272 (noted)

*Acentroptera pulchella* (Guérin-Méneville). Baly 1858: 121 (redescription); Gemminger and Harold 1876: 3608 (catalog); Donckier 1899: 568 (catalog); Weise 1911a: 19 (catalog), 1911b: 27 (catalog); Guérin 1953: 100 (faunal list); Papp 1953: 51 (catalog); Uhmman 1957: 66 (catalog), 1964b: 6 (faunal list); Mantovani et al. 2005: 153 (host plant); Frank and Lounibos 2009: 143 (noted); Staines 2010: 1 (nomenclature); Campos and Fernández 2011: 11 (noted); Magalhães et al. 2012: 944 (biology).

**Description.** Elongate; subparallel; convex; yellowish-brown; antennomeres 8-11 brown; eyes brown; pronotum with medial longitudinal metallic green vitta not reaching anterior or basal margins, lateral margin with sinuous metallic green vitta; scutellum reddish-brown; elytra pale yellow with lateral margin, suture, humerus, and apex darker plus 2 large dark maculae along sutural margin; venter and legs reddish. Head: vertex punctate, medial sulcus present; depressed between eyes; tooth present between antennal bases; frons and clypeus punctate; frons carinate. Antenna: as long as head and pronotum combined; antennomere 1 subglobose; 2 elliptical, subequal in length to 1; 3-4 cylindrical, 3  $1\frac{1}{2}$ x length of 2, 4  $\frac{3}{4}$  length of 3; 5-7 elliptical, subequal in length, each  $\frac{1}{2}$  length of 4; 8-10 transverse, subequal in length, slightly shorter than 7; 11 longer than 10, broadly rounded at apex; 1-7 sparsely punctate; 8-11 setose. Pronotum: quadrate, slightly narrowed anteriorly; convex; lateral margin bisinuate, angulate in middle, narrowly margined; anterior angle with rounded tooth; posterior angle acute; surface densely punctate, punctures less dense on disc; transverse basal impression present medially; pronotal length 1.8-2.7 mm; pronotal width 2.1-3.1 mm. Scutellum: small; rounded; micropunctate. Elytron: lateral margin straight, smooth, narrowly margined; exterior apical angle rounded, smooth; apical margin slightly laminate; sutural angle with minute tooth; humerus rounded; quadricostate, costae 2 and 4 more produced than 1 or 3, all complete; elytral length 7.6-11.6 mm; elytral width 3.6-5.1 mm. Venter: pro- and mesosterna sparsely punctate medially, impunctate laterally; metasternum impunctate; abdominal sterna sparsely punctate, each puncture with pale seta; last sternite with fringe of setae along apical margin. Leg: punctate, each puncture with pale seta; tibia with fringe of setae on inner apical margin. Total length: 9.7-14.6 mm.

**Discussion.** Baly (1858) merely repeated Guérin-Méneville's (1844) original description and adds a few notes on the variation in the pronotal and elytral markings. The original description is detailed enough to confidently assign specimens to the species name. Since the original description was based on specimens from the Chevrolat and Dejean collections, which were widely dispersed, the type specimen may exist in a smaller museum in Europe. Therefore a neotype designation is not justified at this time.

**Host plants.** *Aechmea blanchetiana* (Baker) L. B. Sm., *Neoregelia cruenta* (Grah.) L. B. Sm. (Bromeliaceae) (Mantovani et al. 2005).

**Distribution.** Brazil (Minas Gerais, Rio de Janeiro, Santa Catharina, São Paulo).

**Biology.** Mantovani et al. (2005), Magalhães (2006), and Magalhães et al. (2012) discussed the feeding of adults of this species. Adults feed on the distal parts of leaves, scraping the epidermis in long narrow strips (2-5 mm wide and up to 100 mm long). Wounded tissue dried and became cork-like in appearance and red in color. Adult beetles were more active at lower temperature and on cloudy days, they were seldom observed in the warmest part of sunny days.

**Specimens examined: Brazil:** no further data (BMNH). Minas Gerais- Aguas Vermelhas, December 1983, 800 m (CMNH). Santa Catharina- no further data (BPBM); February 1945 (AMNH). Total: 13.

**Literature records. Brazil:** Rio de Janeiro, January-February 2003 (Mantovani et al. 2005).

### *Acentroptera rubronotata* Pic *incertae sedis*

*Acentroptera rubronotata* Pic 1932: 15 (type: Brazil, Tapera, depository unknown). Carvalho and Carvalho 1939: 54 (faunal list); Papp 1953: 51 (catalog); Uhmman 1957: 66 (catalog), 1964a: 412 (catalog); Descarpentries and Villiers 1959: 144 (types).



**Description.** Translation of Pic (1932): Somewhat elongate, shining, testaceous; elytra with 3 maculae anteriorly and posteriorly; elytra red-green and marked with black; pronotum red and green, trivittate, strongly and densely punctuate. Total length 8-10 mm.

Very similar to *A. maculata* but differs by the reduced red maculae and dark purple marking on the elytra and with the costae less produced.

**Discussion.** The type of this species could not be located in the M. Pic collection in the MNHN (A. Mantilleri, per. com.). I have been unable to locate determined specimens of this species or any specimens fitting this description and the original description is too superficial to determine the placement of the species. Until the type is located, the species should be treated as *incertae sedis* (ICZN 1999, Art. 67.2.5).

**Host plant.** Unknown.

**Distribution.** Brazil (Pará).

### ***Acentroptera strandi* Uhmman**

Fig. 11

*Acentroptera strandi* Uhmman 1943: 115 (Holotype: Panama, Lino, Fa. Staudinger [handwritten label]// Holotyp [red printed label]// *Acentroptera strandi* Uh., E. Uhmman det, DEI). Papp 1953: 51 (catalog); Uhmman 1957: 66 (catalog); Gaedike and Döbler 1971: 360 (types); Wilcox 1975: 140 (catalog); Staines 1997: 411 (Uhmman species list), 2011: 55 (faunal list).

**Description.** Elongate; convex; slightly expanding apically; testaceous; pronotum with brown medial vitta; eyes, scutellum, and antennomeres 1-9 black, antennomeres 10-11 brown; legs with tarsi brown, profemur and protibia with diffuse brown markings, meso- and metatibiae brown; venter testaceous with pro-, meso-, and metasterna black laterally, abdomen darkening to apex. Head: vertex impunctate, medial sulcus present; slightly depressed between eyes; tooth present between antennal bases; frons impunctate, carinate; clypeus punctate. Antenna: reaches to humerus; antennomere 1 subglobose,  $\frac{3}{4}$  length of 2; 2-6 cylindrical, with 2-5 subequal in length; 6 shorter than 5; 7-11 each wider than 6; 7-10 transverse, subequal in length, each shorter than 6; 11 2x length of 10, pointed at apex; 1-6 sparsely punctate; 7-11 setose. Pronotum: subquadrate; convex; lateral margin sinuate, angulate in middle, narrowly margined; anterior angle with blunt, oblique tooth; posterior angle acute, with small, acute tooth; surface densely punctate; longitudinal medial sulcus present on disc; transverse basal impression present medially; pronotal length 1.3-1.6 mm; pronotal width 1.3-1.7 mm. Scutellum: quadrate; micropunctate. Elytron: lateral margin smooth, narrowly margined; exterior apical angle rounded, narrowly margined; apical margin sinuate, narrowly margined, smooth; sutural angle with small acute tooth; humerus angulate; slightly constricted behind humerus; interspace 4 costate, flattened at base; 6 and 8 costate but less produced; 2 costate at apex; elytral length 5.3-7.3 mm; elytral width 2.0-2.7 mm. Venter: pro- and mesosterna impunctate medially, sparsely punctate laterally; metasternum impunctate medially, slightly rugose laterally; abdominal sterna impunctate. Leg: sparsely, finely punctate, each puncture with pale seta; tibia with fringe of setae on inner apical margin. Total length: 6.7-9.1 mm.

**Plant association.** Adults have been collected fogging *Pentaclethra macroloba* Kuntze (Fabaceae) (Staines 2011).

**Distribution.** Costa Rica, Panama.

**Specimens examined: Costa Rica:** unknown locality- Ciricavas, 17 May 1938 (USNM). Cartago-Turrialba, 22-28 February 1965 (USNM). Herédia- Est. Biol. La Selva, 150 m, 22 October 1994 (INBIO). **Panama:** Chiriquí- Chir. Res. For., La Fortuna, Quebrada Aleman, 21 July 1995 (BYU). Total: 4.

***Acentroptera tessellata* Baly**

Fig. 12

*Acentroptera tessellata* Baly 1858:122 (Neotype [here designated]: 10947// Neotype [white disk with red border]// Fry, Rio Jano.// Fry Coll. 1905-100// *Acentroptera tessellata* Baly, Brasilien [label folded] (BMNH). Gemminger and Harold 1876: 3608 (catalog); Donckier 1899: 568 (catalog); Weise 1911a: 19 (catalog), 1911b: 27 (catalog); Papp 1953: 51 (catalog); Uhmman 1957: 66 (catalog); Staines and Staines 1999: 522 (Baly species list).

*Acentroptera tessellata* Baly. Guérin 1953: 100 (*lapsus calami*, faunal list).

**Description.** Broadly elongate; subparallel; subconvex; yellowish; eyes black; pronotum with medial longitudinal vitta and lateral margins darker; scutellum dark brown; elytra with elongate darker spots; antennae, legs, and venter yellowish. Head: vertex sparsely punctate, medial sulcus present; slightly depressed between eyes; tooth present between antennal bases; frons and clypeus impunctate. Antenna: reaches to humerus; antennomere 1-2 subequal in length; 1 subglobose; 2 ovate; 3-4 subequal in length, each  $1\frac{1}{2}x$  length of 2, elongate, cylindrical; 5-7 elliptical, 5 shorter than 4, decreasing in length; 8-10 transverse, subequal in length; 11 longer than 10, acutely pointed at apex; 1-7 sparsely punctate; 8-11 setose. Pronotum: transverse; subconvex; lateral margin straight, parallel at base, weakly angled in middle, sinuate apically, narrowly margined; anterior angle with oblique tooth; posterior angle acute; surface coarsely, densely punctate; longitudinal sulcus present on disc; transverse basal impression present medially; pronotal length 1.5 mm; pronotal width 1.7 mm. Scutellum: quadrate; impunctate. Elytron: lateral margin straight, smooth, margined; exterior apical angle rounded; apical margin sinuate, laminate; sutural angle notched, with small tooth; humerus rounded; surface foveolate-punctate; with 4 costae, interspace 4 most strongly costate; elytral length 5.7 mm; elytral width 2.6 mm. Venter: pro- and mesosterna impunctate medially, punctate laterally; metasternum impunctate; abdominal sterna sparsely, irregularly punctate, each puncture with pale seta; apical sternite with fringe of setae on apical margin. Leg: punctate, each puncture with pale seta; tibia with fringe of setae on inner apical margin. Total length: 7.7 mm.

**Discussion.** This species was described from a single specimen from Brazil in the Parry collection and deposited in the BMNH. A detailed examination of the BMNH collection by the author and S. L. Shute (BMNH) failed to locate the holotype. Specimens identified as *A. tessellata* were not found in the DEI, MNHN, NRM, and ZMHB collections. I therefore concluded that the holotype has been lost or destroyed. Baly's (1858) description is detailed enough to determine specimens from the BMNH and USNM collections as *A. tessellata*. Since the name had only been mentioned in catalogs and a more detailed description had not been published, a neotype is hereby designated to clarify the nomenclatural status of this species name (ICZN 1999, Art. 75).

**Host plant.** Unknown.

**Distribution.** Brazil (Bahia, Rio de Janeiro).

**Specimens examined: Brazil:** Bahia- no further data (BMNH, USNM). Rio de Janeiro- no further data (BMNH). Total: 3.

***Acentroptera zikani* Uhmman**

Fig. 13

*Acentroptera zikani* Uhmman 1935: 50 (Holotype: Virginia- 1500 m, S. Minas-Gerais, Faz. Campos, 16-XI-1921, J. F. Zikan// No.// Bexbeule 1933, J. F. Zikan// Holotyp [red label]// *Acentroptera zikani* Uh., E. Uhmman det. 33 (DEI)). Papp 1953: 51 (catalog); Uhmman 1957: 66 (catalog); Gaedike and Döbler 1971: 363 (types); Staines 1997: 411 (Uhmman species list).

**Description.** Elongate; narrow; parallel-sided; reddish-brown with black markings; head and venter orangish-red; pronotum with longitudinal medial vitta and lateral margins dark; each elytron with macula on humerus, on puncture rows 1 and 2 near scutellum, on puncture rows 2-5 on basal  $\frac{1}{4}$ , on lateral margin extending to puncture row 9 from base to just beyond middle, on puncture rows 2 and 3 on apical  $\frac{1}{4}$ , and transverse band from puncture rows 2-9 on apical  $\frac{1}{5}$ ; legs orangish-red except upper surface of femora and tibiae diffuse black. Head: vertex punctate, medial sulcus present; not depressed between eyes; tooth present between antennal bases; frons with transverse carina; mandibles large. Antenna: reaches to humerus; antennomere 1 subglobose,  $\frac{3}{4}$  length of 2; 2 transverse; 3-4 cylindrical, each longer than 2; 5-7 elliptical, decreasing in length; 8-10 transverse, subequal in length; 11 2x length of 10, pointed at apex; 1-7 punctate, 8-11 setose. Pronotum: transverse; convex; lateral margin sinuate, narrowly margined; anterior angle with blunt tooth; posterior angle acute; surface moderately punctate, punctures large; with medial longitudinal sulcus from base to apex; deep transverse basal impression present medially; pronotal length 2.1 mm; pronotal width 2.7 mm. Scutellum: quadrate; punctate. Elytra: lateral margin straight, smooth; exterior apical angle rounded; apical margin sinuate, slightly laminate; sutural angle with small tooth; humerus angulate; regularly punctate-striate; interspaces 2, 4, 6, and 8 costate, interspaces 4 and 6 most produced; elytral length 9.4 mm; elytral width 4.4 mm. Venter: pro- and mesosterna punctate; metasternum and abdomen impunctate; last abdominal sternite with fringe of setae on apical margin. Leg: punctate, each puncture with pale seta; tibia with fringe of setae on inner apical margin; meso- and metatibiae with tooth at apex; tarsi large. Total length: 12.1 mm.

**Host plant.** Unknown.

**Distribution.** Brazil (Minas Gerais).

**Specimens examined:** unknown locality: ex. Musaeo Mniszech (USNM). **Brazil:** Minas Gerais- Virginia, Faz. Campos, 1500 m, 16 November 1921 (DEI). Total: 2.

### Acknowledgments

I thank the following curators for allowing me to examine the specimens under their care: American Museum of Natural History (AMNH), L. H. Herman; B. P. Bishop Museum (BPBM), G. A. Samuelson; Brigham Young University (BYU), S. M. Clark; Carnegie Museum of Natural History (CMNH), R. L. Davidson; University of Costa Rica (UCRC), P. Hanson; Deutsche Entomologische Institut (DEI), L. Zerke; Instituto Nacional de Biodiversidad (INBio), A. Solís; Museum National d'Histoire Naturelle, Paris (MNHN), A. Mantilleri; Museum für Tierkunde, Dresden (STMD), O. Jaeger; The Natural History Museum (BMNH), S. L. Shute; Naturhistorisches Museum Wien (NHMW), H. Schillhammer; L. Sekerka (LSC), Liberea, Czech Republic.

Specimens were not borrowed from but B. Viklund, Swedish Museum of Natural History (NRM) and J. Frisch, Museum für Naturkunde de Humboldt Universität (ZMHB) examined the collections under their care for specimens of specific *Acentroptera* species.

I thank K. Darrow, Smithsonian Institution, for figures 5 and 8. Susan L. Staines provided editorial assistance and encouragement.

### Literature Cited

- Baly, J. S. 1858.** Catalogue of Hispididae in the collection of the British Museum. London, 172 p.
- Campos, R. E., and L. A. Fernández. 2011.** Coleopterans associated with plants that form phytotelmata in subtropical and temperate Argentina, South America. *Journal of Insect Science* 11(147): 1-18.
- Carvalho, M. B. de, and R. F. de Carvalho. 1939.** *Primeria contribuição para um catalogo dos insetos de Pernambuco.* Arquivos do Instituto de Pesquisas Agronomicas 2: 27-60.
- Chapuis, F. 1875.** *In* J. T. Lacordaire (ed.). Histoire naturelle des insectes. Genera des Coléoptères, Vol. 11, Famille des Phytophages. Librairie encyclopédique de Roret; Paris. 420 p.

- Chenu, J. C. 1884.** Encyclopédie d'histoire naturelle; ou traité complet de cette science d'après des naturalistes les plus éminents de tous les pays et de toutes les époques. Coléoptères. Vol. 3. 2nd ed. Librairie de Firmin-Didot; Paris. 360 p.
- Chenu, J. H. C., and E. Desmarest. 1870.** Encyclopedie d'histoire naturelle; ou, traite complet de cette science d'apres les travaux des naturalistes les plus éminents de tous les pays et de toutes les époques: Buffon, Daubenton, Lacepede, G. Cuvier, F. Cuvier, Geoffroy Saint-Hilaire, 2 Lat. Coléoptères. Librairie de Firmin-Didot; Paris. 312 p.
- Chevrolat, L. A. A. 1836.** pp. 385-503. *In*: P.F.M.A. Dejean. Catalogue des Coléoptères de la collection de M. le comte Dejean. Troisième édition, revue, corrigée et augmentée, livr. 5. Méquignon-Marvis Père et Fils; Paris. 503 p.
- Dejean, P. F. M. A. 1836.** Catalogue des Coléoptères de la collection de M. le comte Dejean. 3rd ed. Méquignon-Marvis Père et Fils; Paris. 503 p.
- Descarpentries, A., and A. Villiers. 1959.** Les types de la collection M. Pic. 1. Chrysomelinae et Hispinae du Nouveau-Monde. Bulletin du Museum National d'Histoire Naturelle Paris (2)31(2): 137-154.
- Donckier de Donceel, H. 1899.** Catalogue systematique des Hispides. Annales de la Société Entomologique de France 68: 540-615.
- Frank, J. H., and L. P. Lounibos. 2009.** Insects and allies associated with bromeliads: A review. Terrestrial Arthropod Reviews 1(2): 125-153.
- Gaedike, R., and Döbler, H. 1971.** Katalog der in den Sammlungen des ehemaligen Deutschen Entomologischen Institutes aufbewahrten Typen-VII (Coleoptera: Hispinae). Beitrage zur Entomologie 21: 341-395.
- Gemminger, M., and B. von Harold. 1876.** Catalogus Coleopterum hucusque descriptorum, synonymicus et systematicus. Williams and Norgate; London. Vol. 12, 3479-3822.
- Guérin, J. 1953.** Coleopteros do Brazil. Edit. Pela Faculdade de Filosofia, Ciências e Letras Universidade; São Paulo. 356 p.
- Guérin-Ménéville, F. E. 1830.** Crustacées, archnides et insectes. pp. 1-319. *In*: L. I. Duperrey (ed.). Voyage autour du monde : exécuté par ordre du roi, sur la corvette de Sa Majesté, la Coquille, pendant les années 1822, 1823, 1824, et 1825: sous le Ministère et conformément aux instructions de S.E.M. le Marquis de Clermont-Tonnerre, ministre de la marine; et publié sous les auspices de son excellence mgr le cte de Chabrol, ministre de la marine et des colonies, zoologie. Arthus Bertrand; Paris. Volume 2, partie 2. 360 p.
- Guérin-Ménéville, F. E. 1838.** Insectes du voyage de la Favorite. Magazin de Zoologie 8: 225-238.
- Guérin-Ménéville, F. E. 1844.** Iconographie du regne animal de G. Cuvier, vol. 7, insects. J. B. Baillière; Paris. 576 p., 104 pls.
- International Code of Zoological Nomenclature (ICZN). 1999.** International Code of Zoological Nomenclature (4th ed.). Tipografia La Garangola, Padova; Italy. 306 p.
- Jolivet, P. 1989.** Sélection trophique chez les Hispinae (Coleoptera Chrysomelidae Cryptostoma). Bulletin Mensuel de la Société Linnéenne de Lyon 58: 297-317.
- Jolivet, P., and T. J. Hawkeswood. 1995.** Host-plants of Chrysomelidae of the world. Backhuys Publishers; Leiden. 281 p.
- Lucas, P. H. 1859.** Entomologie. *In*: Animaux nouveaux ou rares recueillis pendant l'expédition dans les parties centrales de l'Amérique du Sud, de Rio de Janeiro a Lima, et de Lima au para; executé par ordre du Gouvernement français pendant les années 1843 a 1847, sous la direction du Comte Francis de Castelnau. P. Bertrand; Paris. 204 p.
- Magalhães, N. 2006.** Padrão de herbivoria foliar de *Acentroptera pulchella* Guérin-Ménéville (Chrysomelidae) sobre bromélias cultivadas no arboreto do Instituto de Pesquisas Jardim Botânico do Rio de Janeiro. Unpublished MS thesis Instituto de Pesquisas Jardim Botânico do Rio de Janeiro. 90 p.
- Magalhães, N., L. B. Ferreira, G. Leitão, and A. Mantovani. 2012.** Effects of leaf herbivory on the bromeliad *Aechmea blanchetiana*: A study of selective feeding by the scraper *Acentroptera pulchella*. Acta Botanica Brasilica 26(4): 944-952.
- Mantovani, A., N. Magalhães, M. L. Teixeira, G. Leitão, C. L. Staines, and B. Resendo. 2005.** First report on host plants and feeding habits of the leaf beetle *Acentroptera pulchella* Guérin-Ménéville (Chrysomelidae, Hispinae). pp. 153-157 *In*: A. S. Konstantinov, L. Penev, and A. Tishechkin (eds.).

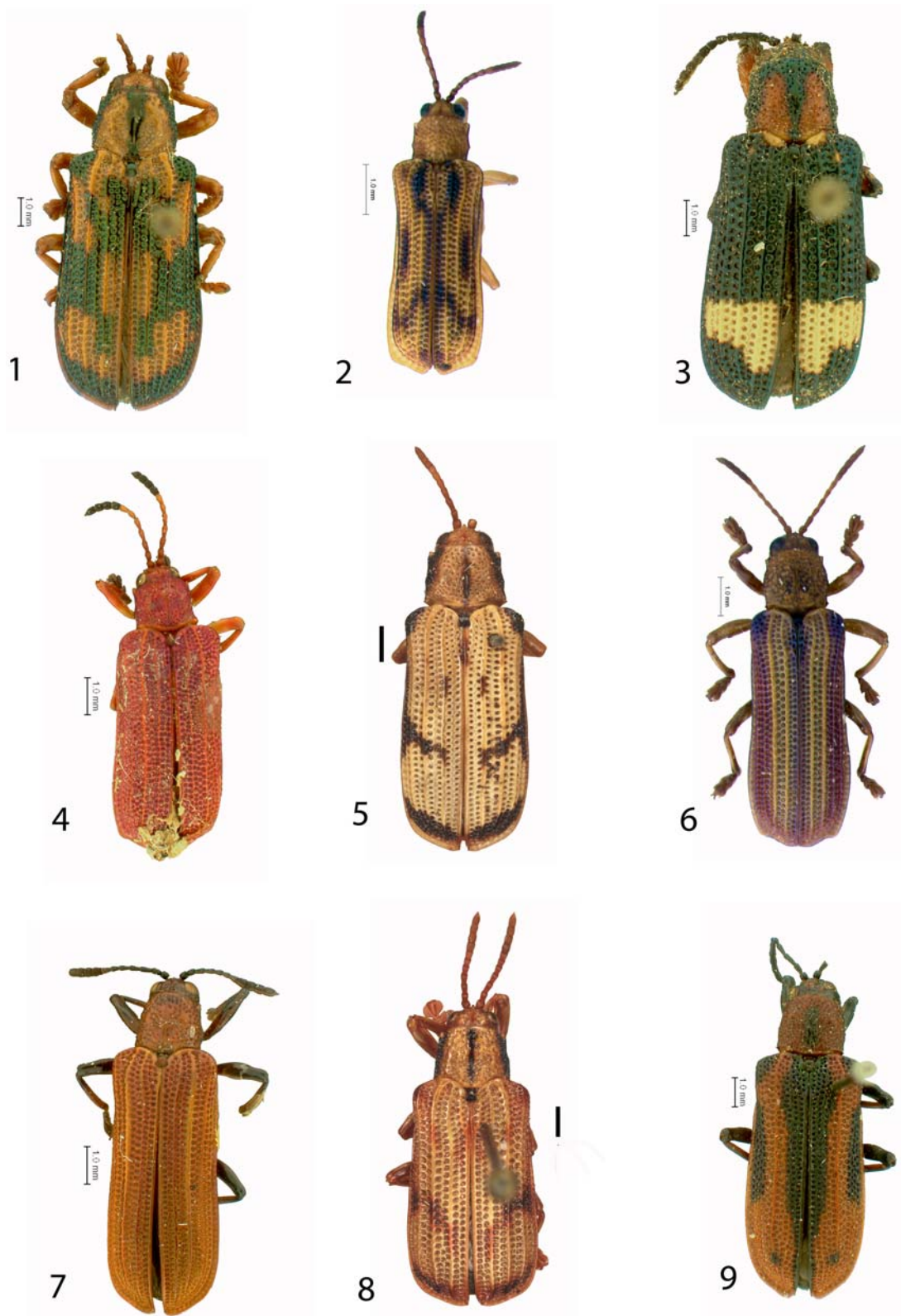


- Contributions to systematics and biology of insects: Papers celebrating the 80<sup>th</sup> birthday of I. K. Lopatin. Pensoft Publishers; Sofia. 388 p.
- Monrós, F., and M. J. Viana. 1947.** Revisión sistemática de los Hispididae Argentinos (Insecta, Coleop. Chrysomeloid.). *Anales del Museo Argentino Ciencias Naturales "Bernardino Rivadavia"* 42: 125-324.
- Papp, C. S. 1953.** The Hispinae of America. Third contribution for promoting the scientific results of the International Hylean Amazon Inst. in Manaus, Brazil. *Portugaliae Acta Biologica (B)*4: 1-147.
- Pic, M. 1932.** Nouveautés diverses. *Mélanges Exotico-Entomologiques* 59: 1-36.
- Roig-Juñent, S. 2004.** Hispidinae. pp. 115-121 *In*: H. A. Ordo, G. Logarzo, K. Braun, and O. di Iorio (eds.). *Catálogo de insectos fitófagos de la Argentina y sus plantas asociadas.* Sociedad Entomológica Argentina. Buenos Aires, Argentina. 720 p.
- Santiago-Blay, J. A. 2004.** Leaf-mining chrysomelids. *In*: P. Jolivet, J. A. Santiago-Baly, and M. Schmitt (eds.). *New Developments on the Biology of Chrysomelidae.* SPB Academic Publishing. 83 p. (CD format).
- Staines, C. L. 1997.** Erich Uhmann: Publications and proposed taxa in the Hispinae (Coleoptera: Chrysomelidae). *Beiträge zur Entomologie* 47: 399-420.
- Staines, C. L. 2002a.** The New World tribes and genera of hispines (Coleoptera: Chrysomelidae: Cassidinae). *Proceedings of the Entomological Society of Washington* 104(3): 721-784.
- Staines, C. L. 2002b.** Nomenclatural notes and new species of Sceloenopliini (Coleoptera: Chrysomelidae: Cassidinae). *Zootaxa* 89: 1-32.
- Staines, C. L. 2010.** Nomenclatural notes on Chalepini and Sceloenopliini (Coleoptera: Cassidinae). *Insecta Mundi* 0122: 1-2.
- Staines, C. L. 2011.** Hispines (Chrysomelidae: Cassidinae) of La Selva Biological Station, Costa Rica. *In*: P. Jolivet, J. Santiago-Blay, and M. Schmitt (eds.). *Research on Chrysomelidae 3.* *Zookeys* 157: 45-65.
- Staines, C. L., and S. L. Staines. 1997.** Type specimens of Hispinae (Coleoptera: Chrysomelidae) in the Natural Museum of Natural History, Smithsonian Institution. *Smithsonian Contributions to Zoology.* Number 585. 25 p.
- Staines, C. L., and S. L. Staines. 1999.** Joseph Sugar Baly: The man and his entomological works. *Beiträge zur Entomologie* 49: 489-530.
- Thomson, J. 1856.** Description de dix-sept Coléoptères. *Revue et Magasin de Zoologie* (2)8: 472-483.
- Uhmann, E. 1930a.** Hispinen aus Costa Rica aus der Ausbeute der Herrn. Ferd. Nevermann. 20. Beitrag zur Kenntnis der Hispinen (Col. Chrys.). *Folia Zoologica et Hydrobiologica* 1: 209-256.
- Uhmann, E. 1930b.** Amerikanische Hispinen aus den Museen für Tierkunde und Völkerkunde zu Dresden. (25. Beitrag zur Kenntnis der Hispinen [Col. Chrys.]). *Wiener Entomologische Zeitung* 47: 149-155.
- Uhmann, E. 1935.** Hispinen aus Brasilien (Col. Chrysomelidae). *Revista de Entomologia Rio de Janeiro* 5: 47-59.
- Uhmann, E. 1943.** Neue amerikanische Hispinen. 100. Beitrag zur Kenntnis der Hispinen (Coleoptera: Chrysomelidae). *Folia Zoologica et Hydrobiologica* 12: 115-121.
- Uhmann, E. 1957.** *Coleopterorum Catalogus Supplementa.* Chrysomelidae: Hispinae, Hispinae Americanae. W. Junk. s'Gravenhage. Pars 35(1): 1-153.
- Uhmann, E. 1959.** Amerikanische Hispinae aus den Sammlungen Amerikanischer Entomologen. 199. Beitrag zur Kenntnis der Hispinae (Coleopt. Chrysomelidae). *Pesquisas, Pôrto Alegre* 3: 611-630.
- Uhmann, E. 1964a.** *Coleopterorum Catalogus, Supplementa,* Chrysomelidae: Hispinae. W. Junk. Gravenhage. Pars 35(3): 399-490.
- Uhmann, E. 1964b.** Hispinae aus dem Staate São Paulo, Brasilien. (209. Beitrag zur Kenntnis der Hispinae (Coleoptera, Chrysomelidae). *Iheringia Zoologia* 32: 1-27.
- Uhmann, E. 1966.** Gattungen und Arten von Guérin-Méneville. 224. Beitrag zur Kenntnis der Hispinae (Coleoptera, Chrysomelidae). *Entomologische Abhandlungen* 32: 267-284.
- Weise, J. 1910.** Beitrag zur Kenntnis der amerikanischen Hispinen. *Archiv für Naturgeschichte* 76: 67-127.
- Weise, J. 1911a.** *Coleopterorum Catalogus Chrysomelidae: Hispinae.* W. Junk, Berlin. Pars 35: 1-94.

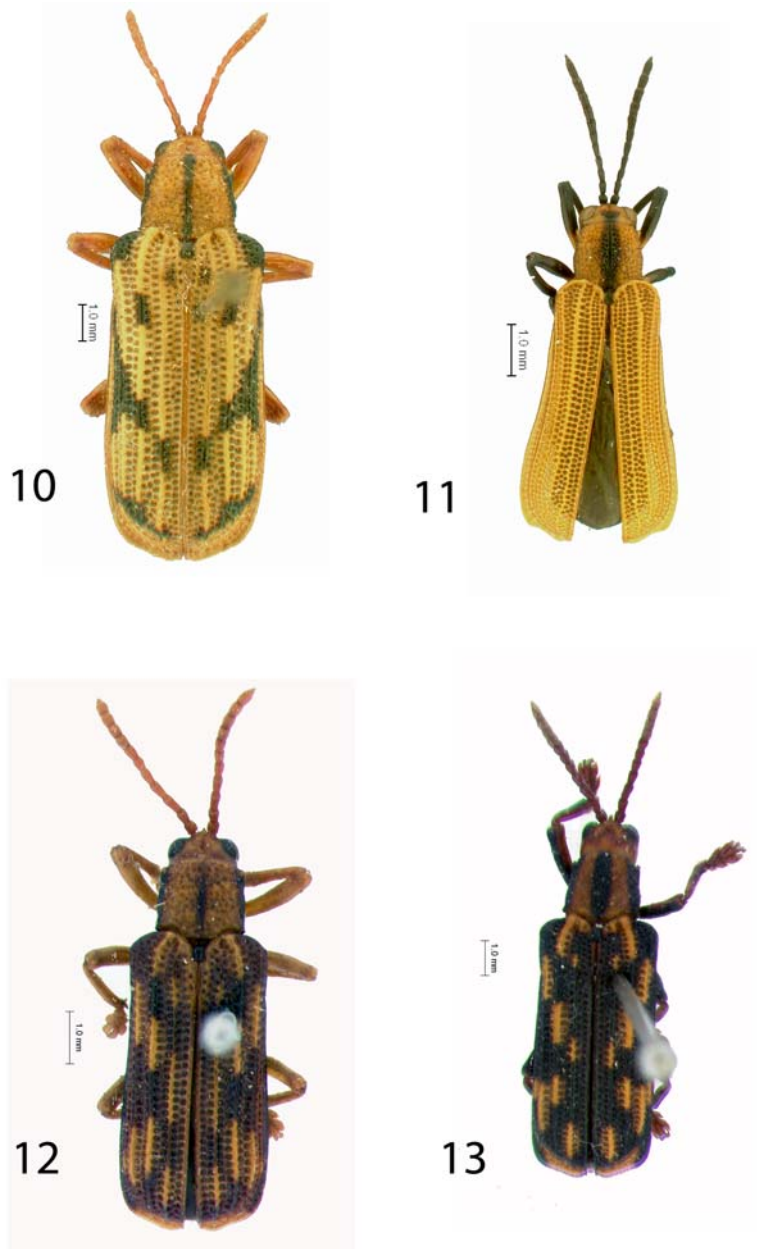


- Weise, J. 1911b.** Coleoptera: Phytophaga, family Chrysomelidae, subfamily Hispinae. *In* P. Wytzman (ed.). *Genera Insectorum*. L. Desmet-Verteneuil, Bruxelles. fasc. 125: 1-123.
- Wilcox, J.A. 1975.** Checklist of the beetles of Canada, United States, Mexico, Central America, and the West Indies. Vol. 1 part 7, the leaf beetles (red version). Biological Research Institute of America, Latham; NY. 166 p.

**Received October 24, 2013; Accepted December 1, 2013.**



**Figures 1-9.** Habitus of *Acentroptera* species. **1)** *Acentroptera basilica* Thomson. **2)** *Acentroptera bita* Staines n. sp. holotype. **3)** *Acentroptera dejeanii* Guérin-Méneville. **4)** *Acentroptera emdeni* Uhmann. **5)** *Acentroptera lacordairei* Lucas. **6)** *Acentroptera lineata* Staines n. sp. holotype. **7)** *Acentroptera nevermanni* Uhmann. **8)** *Acentroptera norrisii* Guérin-Méneville. **9)** *Acentroptera ohausi* Weise.



**Figures 10-13.** Habitus of *Acentroptera* species. **10)** *Acentroptera pulchella* (Guérin-Ménéville). **11)** *Acentroptera strandi* Uhmann. **12)** *Acentroptera tessellata* Baly. **13)** *Acentroptera zikani* Uhmann holotype.

