

INSECTA MUNDI

A Journal of World Insect Systematics

0439

Natural history of the tortoise beetle,
Discomorpha (Discomorpha) biplagiata (Guérin)
(Chrysomelidae: Cassidinae: Omocerini)

R. Wills Flowers
Florida A&M University
Tallahassee, FL 32309 U.S.A.

Caroline S. Chaboo
Division of Entomology
Natural History Museum and Department of Ecology and Evolutionary Biology
1501 Crestline Drive – Suite 140, University of Kansas
Lawrence, KS 66049-2811 U.S.A.

Date of Issue: August 28, 2015

R. Wills Flowers and Caroline S. Chaboo
Natural history of the tortoise beetle, *Discomorpha (Discomorpha) biplagiata*
(Guérin) (Chrysomelidae: Cassidinae: Omocerini)
Insecta Mundi 0439: 1–10

ZooBank Registered: urn:lsid:zoobank.org:pub:8A0FE2B5-1192-4FE2-9783-517A906428D4

Published in 2015 by

Center for Systematic Entomology, Inc.
P. O. Box 141874
Gainesville, FL 32614-1874 USA
<http://centerforsystematicentomology.org/>

Insecta Mundi is a journal primarily devoted to insect systematics, but articles can be published on any non-marine arthropod. Topics considered for publication include systematics, taxonomy, nomenclature, checklists, faunal works, and natural history. **Insecta Mundi** will not consider works in the applied sciences (i.e. medical entomology, pest control research, etc.), and no longer publishes book reviews or editorials. **Insecta Mundi** publishes original research or discoveries in an inexpensive and timely manner, distributing them free via open access on the internet on the date of publication.

Insecta Mundi is referenced or abstracted by several sources including the Zoological Record, CAB Abstracts, etc. **Insecta Mundi** is published irregularly throughout the year, with completed manuscripts assigned an individual number. Manuscripts must be peer reviewed prior to submission, after which they are reviewed by the editorial board to ensure quality. One author of each submitted manuscript must be a current member of the Center for Systematic Entomology.

Chief Editor: Paul E. Skelley, e-mail: insectamundi@gmail.com
Assistant Editor: David Plotkin, e-mail: insectamundi@gmail.com
Head Layout Editor: Eugenio H. Nearn
Editorial Board: J. H. Frank, M. J. Paulsen, Michael C. Thomas
Review Editors: Listed on the **Insecta Mundi** webpage

Manuscript Preparation Guidelines and Submission Requirements available on the **Insecta Mundi** webpage at: <http://centerforsystematicentomology.org/insectamundi/>

Printed copies (ISSN 0749-6737) annually deposited in libraries:

CSIRO, Canberra, ACT, Australia
Museu de Zoologia, São Paulo, Brazil
Agriculture and Agrifood Canada, Ottawa, ON, Canada
The Natural History Museum, London, UK
Muzeum i Instytut Zoologii PAN, Warsaw, Poland
National Taiwan University, Taipei, Taiwan
California Academy of Sciences, San Francisco, CA, USA
Florida Department of Agriculture and Consumer Services, Gainesville, FL, USA
Field Museum of Natural History, Chicago, IL, USA
National Museum of Natural History, Smithsonian Institution, Washington, DC, USA
Zoological Institute of Russian Academy of Sciences, Saint-Petersburg, Russia

Electronic copies (Online ISSN 1942-1354, CDROM ISSN 1942-1362) in PDF format:

Printed CD or DVD mailed to all members at end of year. Archived digitally by Portico.
Florida Virtual Campus: <http://purl.fcla.edu/fcla/insectamundi>
University of Nebraska-Lincoln, Digital Commons: <http://digitalcommons.unl.edu/insectamundi/>
Goethe-Universität, Frankfurt am Main: <http://nbn-resolving.de/urn/resolver.pl?urn:nbn:de:hebis:30:3-135240>

Copyright held by the author(s). This is an open access article distributed under the terms of the Creative Commons, Attribution Non-Commercial License, which permits unrestricted non-commercial use, distribution, and reproduction in any medium, provided the original author(s) and source are credited. <http://creativecommons.org/licenses/by-nc/3.0/>

Layout Editor for this article: Eugenio H. Nearn

Natural history of the tortoise beetle, *Discomorpha (Discomorpha) biplagiata* (Guérin) (Chrysomelidae: Cassidinae: Omocerini)

R. Wills Flowers
Florida A&M University
Tallahassee, FL 32309 U.S.A.
rflowers7@earthlink.net

Caroline S. Chaboo
Division of Entomology
Natural History Museum and Department of Ecology and Evolutionary Biology
1501 Crestline Drive – Suite 140, University of Kansas
Lawrence, KS 66049-2811 U.S.A.
cschaboo@ku.edu

Abstract. The first natural history account of *Discomorpha (Discomorpha) biplagiata* (Guérin) (Chrysomelidae: Cassidinae: Omocerini) from Ecuador is presented. Larvae and adults feed on the leaves and stems of *Cordia hebeclada* Johnst. (Boraginaceae), the first documented host plant for the species. Oviposition and pupation also occur on this host. Young larvae suffered heavy predation, especially from *Ectatomma* sp. (Formicidae: Ponerinae) and *Oplomus* nr. *marginalis* (Pentatomidae: Asopinae).

Resumen. Se presenta la primera cuenta de la historia natural para *Discomorpha (Discomorpha) biplagiata* (Guérin) de Ecuador. Las larvas y los adultos se alimentan de las hojas y tallos de *Cordia hebeclada* Johnst. (Boraginaceae), su primera planta hospedera documentada. La oviposición y la pupación también ocurren en este huésped. Las larvas jóvenes sufren depredación grave por *Ectatomma* sp. (Formicidae: Ponerinae) y *Oplomus* nr. *marginalis* (Pentatomidae: Asopinae).

Key Words. Ecuador, Cassidinae, *Discomorpha*, *Cordia*, larvae, fecal defense.

Introduction

The Neotropical tortoise beetle tribe Omocerini Hincks comprises 12 genera and ~145 species (Borowiec and Świątojańska 2015). The adults are almost circular in dorsal aspect (~1 cm long and wide) and commonly have conspicuous contrasting dorsal coloration of red and black or blue-black. *Borago* L. and *Cordia* L. host plants (Boraginaceae) are known as hosts for 13 species in the tribe (Fiebrig 1910; Bondar 1929; Costa Lima 1955; Windsor et al. 1992; Buzzi 1994; Flowers and Janzen 1997; Chaboo and Borowiec 2003; Nogueira-de-Sá et al. 2004; Borowiec and Moragues 2005; Flinte et al. 2008), and *Hyptis* Jacq. (Lamiaceae) has been documented as host for two species of *Omocerus* Chevrolat (Fiebrig 1910; Viana 1964; Jolivet 1997; Borowiec and Moragues 2005). Immature stages (larvae) are described for only three species in this entire tribe—*Cassidinoma denticulata* (Boheman), *Discomorpha (Discomorpha) languinosa* (Boheman), and *Omocerus (Nebroma) klugi* (Spaeth) (Candèze 1861; Fiebrig 1910). Some biological information has been captured in images for an additional four—*Canistra (Canistrella) rubiginosa* Guérin, *Polychalca (Desmonota) platynota* (Germar), *Discomorpha (Vulpia) nevermanni* (Spaeth), and *Discomorpha winkleri* (Spaeth) (Flinte et al. 2008; Świątojańska 2009; Discover Life 2015).

The tribe Omocerini is diagnosed by 13 synapomorphies, including some unique features of the prothoracic scoli and urogomphi (Fernandes 2011). Sampling of omocerines in modern phylogenetic studies has been limited but suggests monophyly (Hsiao and Windsor 1999: *Discomorpha* + *Omocera*; Chaboo 2007: *Canistra* + *Oxynodera* + *Prenea* + *Polychalca*). Fernandes (2011) found the relationship: (*Carlobruchia (Cassidinoma (“Polychalca” + “Omocerus”))*) + (*Canistra (“Cyclosoma” + “Discomorpha”)*) [“” denotes paraphyletic genera].

According to the online catalog of Cassidinae s. str. (Borowiec and Świątojańska 2015), *Discomorpha* Chevrolat, 1836 currently comprises 61 species in three subgenera—*Discomorpha* (52 species),

Paravulpia Spaeth, 1940 (1 species), and *Vulpia* Spaeth, 1913 (8 species). These species are primarily South American (Colombia to Argentina, Brazil, and Peru, but not in Chile); a few species occur in Central America (Belize, Costa Rica, Nicaragua, and Panama), and two species extend to the Caribbean island of Trinidad. The unusual record of one species, *Discomorpha tricolor* (Herbst), from India is inaccurate. It should be noted that Fernandes (2011) concluded that *Discomorpha* is paraphyletic with other omocerine genera.

The biology of *Discomorpha* species, apart from geographic records on specimen labels, is poorly known. Supplementary details on genitalia are available for *Discomorpha (Discomorpha) atahualpai* Borowiec, *Discomorpha (Discomorpha) davidsoni* Borowiec, and *Discomorpha (Discomorpha) howdenorum* Borowiec (Borowiec 2006). *Discomorpha* adults show a remarkable range of colored and immaculate forms, from black (e.g., *Discomorpha heikertingeri* (Spaeth)) to striking color contrasts of yellow and black (e.g. *Discomorpha (Discomorpha) ganglbaueri* (Spaeth)), orange-yellow (e.g., *Discomorpha (Discomorpha) howdenorum* Borowiec), or metallic green (e.g., *Discomorpha (Discomorpha) metallica* (Guérin)). A few species show sexually dimorphic coloration, e.g., *Discomorpha (Discomorpha) languinosa* (Boheman).

Cassidine life cycles are poorly known (Kosior 1975; Borowiec and Świętojańska 2014); juveniles have been documented for ~250 species (Świętojańska 2009). Images of immature stages of *Discomorpha (Vulpia) nevermanni* (Spaeth) are available online (Borowiec and Świętojańska 2015). In this paper, we present the first natural history report based on fieldwork and specimen collections for *Discomorpha (Discomorpha) biplagiata* (Guérin), which is known from Ecuador and the rest of northern South America.

Materials and Methods

Materials. The natural history and descriptions are based on specimens from ECUADOR: *Los Ríos Province*: Estación Experimental Tropical Pichilingue, Sector “Sta. Rita”, 01.07813°S, 079.46774°W, 71 m, ex *Cordia hebeclada* I.M. Johnst. (Boraginaceae), coll. R.W. Flowers, deposited at the Pontificia Universidad Católica de Ecuador (PUCE).

Field study. Author RWF studied beetle populations on a single host plant in Ecuador (Fig. 1–4) over two observational periods: 22 days during 13 September–10 December 2009, at the end of the local dry season, and 11 days during February to March 2011, during the local rainy season (which was unusually dry in 2009). In early 2010 the plant was chopped back (Fig. 1). During November–December 2010 it had regrown (Fig. 3) but was not occupied by beetles. In February 2011 the population was rediscovered with 96 larvae and 10 adults present. During both observation periods egg masses and larvae were reared in the entomology laboratory at Pichilingue to obtain adults. Immature stages were maintained in plastic containers and fed leaves from the host plant. Field photography was done by RWF with a Nikon Coolpix S7C. Images were minimally edited and arranged as plates using Adobe PhotoshopCS6.

Locality. The original lowland tropical rainforest has been cut for agriculture since the 1940s. The field station has patches of mature rainforest, which may be secondary or remnants of original forest. Average yearly temperature is moderate with monthly maximums of 15.7–29.5°C; rainfall is approximately 2.8 m annually, with single dry and wet (December–April) seasons annually. It appears that the regional climate is experiencing more extreme dry (longer season) and wet seasons (more rainfall) (El Universo 2010).

Host plant. *Cordia hebeclada* ranges from Colombia to Bolivia (Neotropical Flora 2015). It grows as a woody shrub (Fig. 1–4), and matures into a tall tree, up to 35 m (Vargas 2002).

Other arthropods on this plant. Spiders, several ant species (especially *Ectatomma* Smith, Ponerinae), stinkbugs (Heteroptera: Pentatomidae, Asopinae), Diptera, and Lepidoptera (caterpillars) were present on the plant. Several ant species were present, but *Ectatomma* (known locally as *la hormiga tostada* [toasted ants]) were most common on all plants in this habitat.

Specimens. Specimens of all life stages (1 ootheca; 25 larvae; 10 pupae; 1 adult) were collected into 70% ethanol, under permit from the Agencia Ecuatoriana de Aseguramiento de la Calidad del Agro (AGROCALIDAD, Ecuador) to RWF. Voucher insect specimens are deposited at the Museo Ecuatoriano de Ciencias Naturales (MECN), Quito, Ecuador. The plant was identified as *Cordia hebeclada* Johnst. (Boraginaceae) at the Herbario Quito–Católico, PUCE, and a specimen of the host plant are deposited in the PUCE, Quito.

Discomorpha species identification. We identified this as the immaculate form of *D. (D.) biplagiata*, which lacks the red-colored patches on the elytral margin, after discussion with cassidine experts Lech Borowiec (Poland) and Rob Westerduijn (Netherlands). The color variation may reflect a local variety. A revision of the 61 species of this genus will help clarify the outstanding questions of monophyly and the evolutionary status of the species.

Results and Discussion

Females lay eggs grouped in oothecae, which were numerous on the plant in both dry and wet seasons but more so in March 2011 (after February rains). A maximum of 10 oothecae were observed in October 2009. These oothecae were placed ventrally on the mid- or lateral ribs of upper leaves (Fig. 5, 6, respectively), and glued directly to the leaf surface (no stalk). Oothecae were occasionally densely spaced, with several on the same leaf (Fig. 5); in one case, two oothecae seemed to be fused. Oviposition was not observed. Fresh oothecae are pale tan colored but darkened slightly by the following day. Their texture was papery and firm but became spongy in ethanol. Apparently-fresh oothecae were tagged on the plant, and hatching was observed 5 days later (Fig. 7). The maximum number of neonates observed hatching from an ootheca was 36. Several oothecae were damaged, with a distinct chewing pattern—completely chewed medially—suggesting ant predation, but attacks were not directly observed. Adults laid oothecae on the uppermost leaves of the host plant, but by the time the eggs hatched the plant had grown additional upper leaves, creating leaf cover for the newly hatched larvae. Adults chew large holes in the leaves during feeding. Generally only one or two adults were found, but when the population was rediscovered in 2011 ten adults were initially present, probably due to recent emergence from grouped pupae.

Several clusters of newly hatched larvae were observed throughout the 2009 season, but all larvae disappeared before maturing to later instars. The neonate larva has a black head, a yellowish-brown thorax with black markings, and yellowish-brown abdomen (Fig. 7). Younger larvae clustered together, but older instars were more loosely arranged over the plant. Larvae generally do not show cycloaexy. A weak cycloaexic aggregation was observed only once in a group of 1st instars.

Neonates migrated to the apex of the leaf and began feeding by scraping the upper surface. The group damaged the leaf heavily, which then dried and curled. About a day after hatching, 1st instars had created a small black fecal shield comprising a few filaments (Fig. 8, 9). When larvae detected movement nearby they agitated their fecal shields.

The 2nd instars fed gregariously by scraping, leaving “windows” and small holes on the leaf (Fig. 10). They maintained a moist fan-shaped fecal shield. The 3rd instars were initially tan and black (Fig. 11) but became blackened by late 3rd instar (Fig. 12). The 3rd and 4th instars were also gregarious and maintained a shield (Fig. 12, 13); they were still tan-and-black coloration. The 5th instars had a pinkish tan background body color, with black spots (Fig. 14). Older larvae produced a lot of feces, which were deposited as semisolid filaments on the substrate and could accumulate on the leaf (Fig. 15). Later instars made irregular holes in the host leaves, similar to adult feeding damage.

Fifth instars (Fig. 14, 16, 17) retained the shield of the previous instar but did not add to the shield; if the shield fell off, they did not replace it (Fig. 18). By late instar, all 5th instars lost the exuvio-fecal shield. These older larvae significantly impacted the plant, by skeletonizing the leaf, consuming even the ribs. Pupation was gregarious, on the ventral surface of leaves (Fig. 16, 19). Pupae did not retain a fecal shield but retained only the 5th-instar exuviae, with the urogomphus displayed (Fig. 19, 20).

Ectatomma ants were observed interfering with younger larvae. Adult stinkbugs (Pentatomidae: Asopinae: *Oplomus* nr. *marginalis*) (Fig. 21, 22) frequently attacked mature larvae and pupae; curiously, clusters of apparently dead pupae had 1st-instar stinkbug nymphs hidden underneath, suggesting that

they had fed on and killed the *Discomorpha* pupae. A spider was observed interfering with 2nd instars (Fig. 23). Fig. 24 shows an adult *Discomorpha*.

The natural history data we present suggest several interesting questions and potential evolutionary patterns. First, many tortoise beetles show aggregated egg masses, but only a few appear to have oothecal arrangements, with multiple membranous layers as in the present *Discomorpha* species (see Chaboo 2007). The ornate ootheca may provide protection from enemies. Second, we observed that these *Discomorpha* juveniles experienced severe predation pressure. Ants in the genus *Ectatomma* attacked young larvae, and most cohorts observed were gone the next morning. A spider (unknown identification) ate most of a cohort as they hatched. Based on our observations of this population, it appears that the larvae of *Discomorpha biplagiata* have very low survivorship in the first two larval instars but the chance of their surviving to adulthood improves if they can survive to the 3rd instar. The most salient aspect of this study was how difficult it was for this species to establish a subsequent generation of offspring at Pichilingue. Most newly hatched larvae quickly disappeared from their feeding aggregations, most likely due to ant predation. An unknown set of conditions at the beginning of 2011 (when RWF was not in Ecuador) apparently enabled a colony to establish itself, and the larvae to grow large enough to fend off ant attacks (although they were still vulnerable to predatory stink bugs).

Acknowledgments

We sincerely thank the staff at the Estación Experimental Tropical Pichilingue (Instituto Nacional Autónomo de Investigaciones Agropecuarias), in Quevedo, Ecuador, for their assistance and support during this study. Author RWF thanks Matteo and Alexandro Ferreiras for assistance in the field; his research in Ecuador was made possible through support provided by the Offices of Agriculture and of Natural Resources Management, Bureau for Economic Growth, Agriculture, and Trade, U.S. Agency for International Development, under the terms of Award No. EPP-A-00-04-00016, and the Fulbright Foundation. CSC's research is supported by the University of Kansas. We thank Ing. Alvaro Pérez, Herbario Quito-Católico, PUCE for identifying the host plant, Joe Eger for assistance with identification of the pentatomid predator, and Lech Borowiec and Rob Westerduijn for discussion of the beetle species identity. For formal manuscript reviews we thank Margarete de Macedo and Rob Westerduijn. Krista E.M. Galley, ELS, of Galley Proofs Editorial Services provided editorial assistance. The opinions expressed herein are those of the authors and do not necessarily reflect the views of the U.S. Agency for International Development.

Literature Cited

- Bondar, G. 1929.** O cascudinho dourado da Bahia. Notas biológicas sobre algumas cassidídeos de Bahia. Boletim do Laboratorio de Patologia Vegetal do Estado da Bahia 8: 38–40.
- Borowiec, L. 2006.** Four new species of *Discomorpha* Chevrolat, 1837 (Coleoptera: Chrysomelidae: Cassidinae: Omocerini), with a key to *Discomorpha* s. str. Zootaxa 1357: 45–60.
- Borowiec, L., and G. Moragues. 2005.** Tortoise beetles of the French Guyana—a faunistic review (Coleoptera: Chrysomelidae: Cassidinae). Genus 16: 247–278.
- Borowiec, L., and J. Świątojańska. 2014.** 2.7.2. Cassidinae Gyllenhal, 1813. p. 198–217. In: R. A. B. Leschen and R. G. Beutel (eds.). Coleoptera, beetles: Morphology and systematics. Vol. 3, Handbook of zoology. De Gruyter; Berlin, Boston. 676 p.
- Borowiec, L., and J. Świątojańska. 2015.** World Catalog of Cassidinae, Wrocław, Poland. <http://www.biol.uni.wroc.pl/cassidae/katalog%20internetowy/index.htm> [accessed 30 March 2015].
- Buzzi, Z. J. 1994.** Hostplants of Neotropical Cassidinae. p. 205–212. In: P. H. Jolivet, M. L. Cox, and E. Petitpierre (eds.). Novel aspects of the biology of Chrysomelidae. Series Entomologica 50. Kluwer Academic Publishers; Dordrecht. 582 p.
- Candèze, E. 1861.** Histoire des métamorphoses de quelques coléoptères exotiques. Mémoires de la Société Royale des Sciences de Liège 16: 1–86.

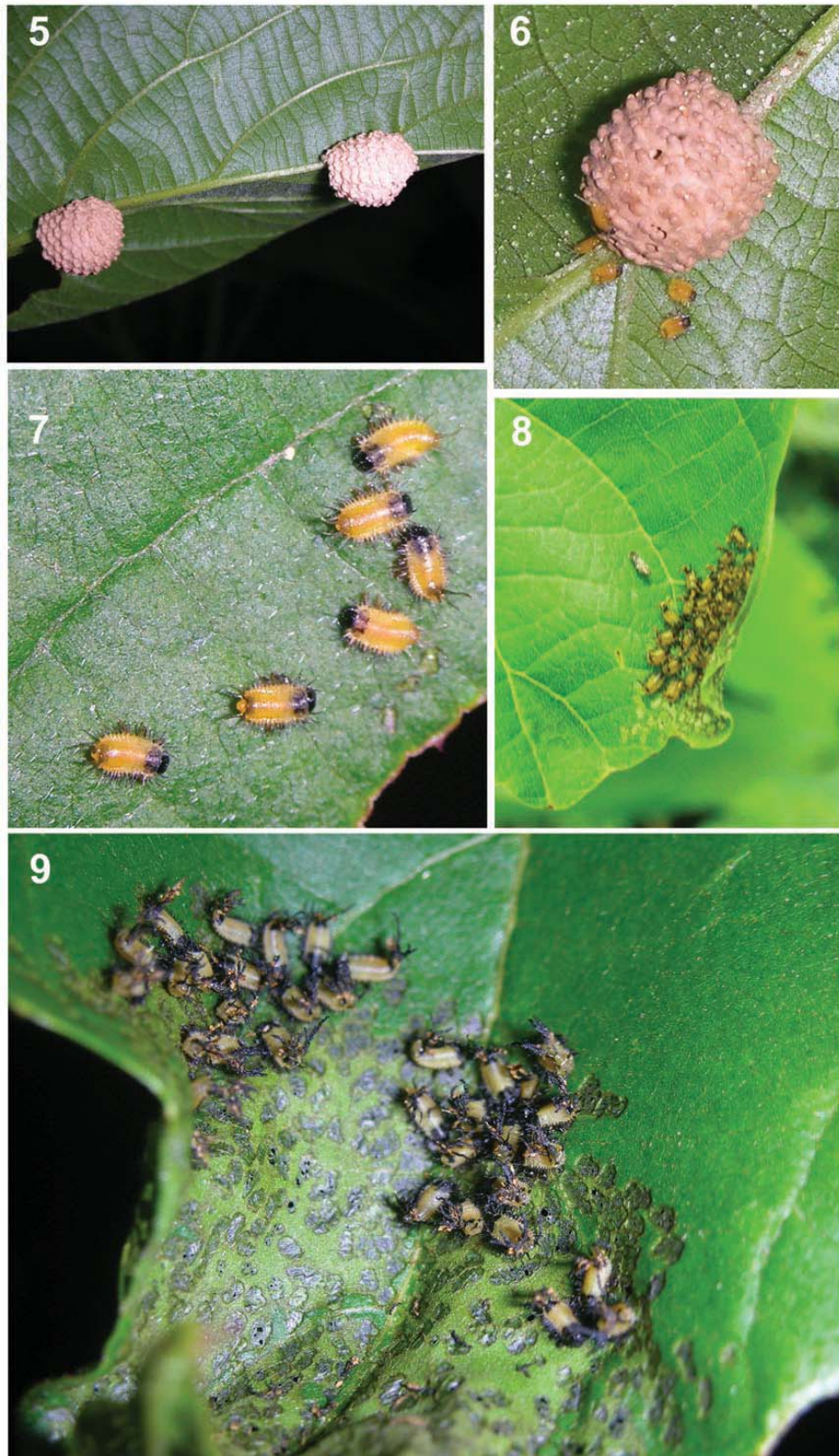
- Chaboo, C. S. 2007.** Biology and phylogeny of Cassidinae Gyllenhal (tortoise and leaf-mining beetles) (Coleoptera: Chrysomelidae). *Bulletin of the American Museum of Natural History* 305: 1–250.
- Chaboo, C. S., and L. Borowiec. 2003.** Annotated checklist of tortoise beetles of Trinidad and Tobago (Coleoptera: Chrysomelidae: Cassidinae). *Coleopterists Bulletin* 57: 71–78.
- Costa Lima, A. M. 1955.** Coleoptera, parte 3. Familia Chrysomelidae. *Insectos do Brasil* 9(29): 143–239.
- Discover Life. 2015.** <http://www.discoverlife.org/> [accessed 4 May 2015].
- El Universo. 2010.** El invierno se redujo 43 días en la última década, en Guayaquil. <http://www.el-universo.com/2010/01/07/1/1445/invierno-redujo-dias-ultima-decada-guayaquil.html> [accessed 15 July 2015].
- Fernandes, F. R. 2011.** Filogenia da tribo Omocerini Hincks, 1952 (Coleoptera, Chrysomelidae, Cassidinae). Unpublished Ph.D. Thesis, Instituto de Biociencias da Universidade de Sao Paulo; Brazil. 216 p.
- Fiebrig, K. 1910.** Cassiden und Cryptocephaliden Paraguays. Ihre Entwicklungsstadien und Schutzvorrichtungen. *Zoologische Jahrbucher, Suppl.* 12, Heft 2: 161–264.
- Flinte, V., M. V. de Macedo, and R. F. Monteiro. 2008.** Tortoise beetles (Chrysomelidae: Cassidinae) of a tropical rain forest in Rio de Janeiro, Brazil. p. 195–209. *In:* P. Jolivet, J. Santiago-Blay, and M. Schmitt (eds.). *Research on Chrysomelidae. Vol. 1.* Brill; Leiden, Boston. 430 p.
- Flowers, R. W., and D. H. Janzen. 1997.** Feeding records of Costa Rican leaf beetles (Coleoptera: Chrysomelidae). *Florida Entomologist* 80: 334–366.
- Hsiao, T. H., and D. M. Windsor. 1999.** Historical and biological relationships among Hispinae inferred from 12S *mtDNA* sequence data. p. 39–50. *In:* M. L. Cox (ed.). *Advances in Chrysomelidae biology 1.* Backhuys Publishers; Leiden. 671 p.
- Jolivet, P. 1997.** *Biologie des coléoptères chrysomélides.* Société nouvelle des Editions Boubée; Paris. 279 p.
- Kosior, A. 1975.** Biology, ecology and economic importance of Cassids (Coleoptera: Chrysomelidae: Cassidinae) of the Ojcow National Park. *Acta Zoologica Cracoviensia* 20: 251–392.
- Neotropical Flora. 2015.** *Cordia hebeclada.* <http://symbiota.org/neotrop/plantae/taxa/index.php?taxon=19430> [accessed 15 April 2015].
- Nogueira-de-Sá, F., L. Medeiros, and M. Valverde de Macêdo. 2004.** Phenology of populations of tortoise beetles (Cassidinae) in Brazil. p. 647–658. *In:* P. Jolivet, J. SantiagoBlay, and M. Schmitt (eds.). *New contributions in biology of the Chrysomelidae.* Kugler Publications; The Hague. 803 p.
- Świątojańska, J. 2009.** The immature stages of tortoise beetles with review of all described taxa (Coleoptera: Chrysomelidae: Cassidinae). *Polish Taxonomical Monographs* 16: 1–157.
- Vargas, W. G. 2002.** *Guía ilustrada de las plantas de las montañas del Quindío y los Andes Centrales.* Universidad de Caldas; Manizales. 813 p.
- Viana, M. J. 1964.** Revisión sistemática de las especies argentinas de “Omocerini” Spaeth y catalogo bibliográfico de la tribus (Coleopt., Chrysomelidae, Cassidinae). *Revista del Museo Argentino de Ciencias Naturales “Bernardino Rivadavia”* 1(1): 1–131.
- Windsor, D. M., E. G. Riley, and H. P. Stockwell. 1992.** An introduction to the biology and systematics of Panamanian tortoise beetles (Coleoptera: Chrysomelidae: Cassidinae). p. 372–391. *In:* D. Quintero and A. Aiello (eds.). *Insects of Panama and Mesoamerica: Selected studies.* Oxford University Press; Oxford. 692 p.

Received July 13, 2015; Accepted July 27, 2015.

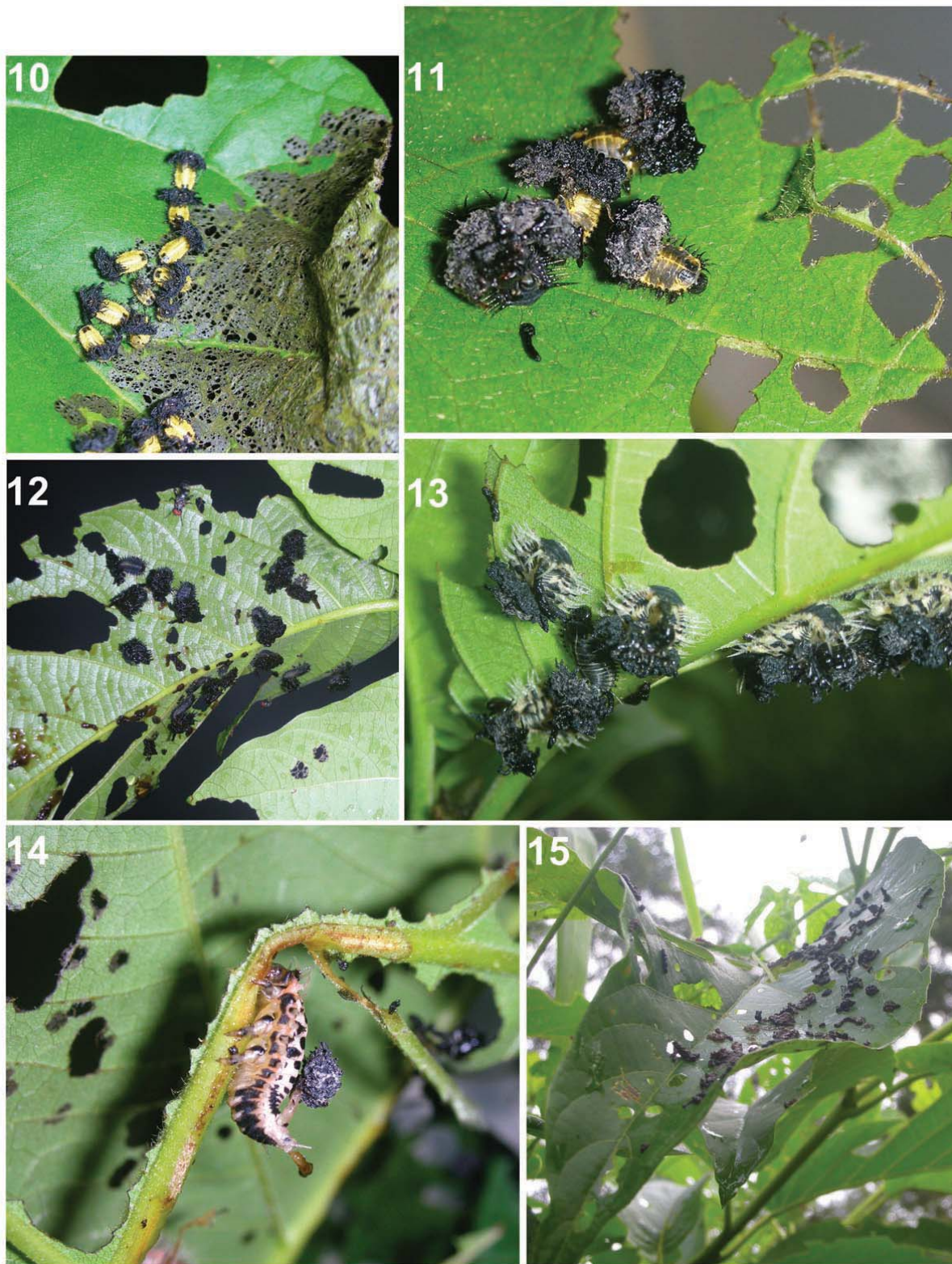
Review Editor Michael L. Ferro.



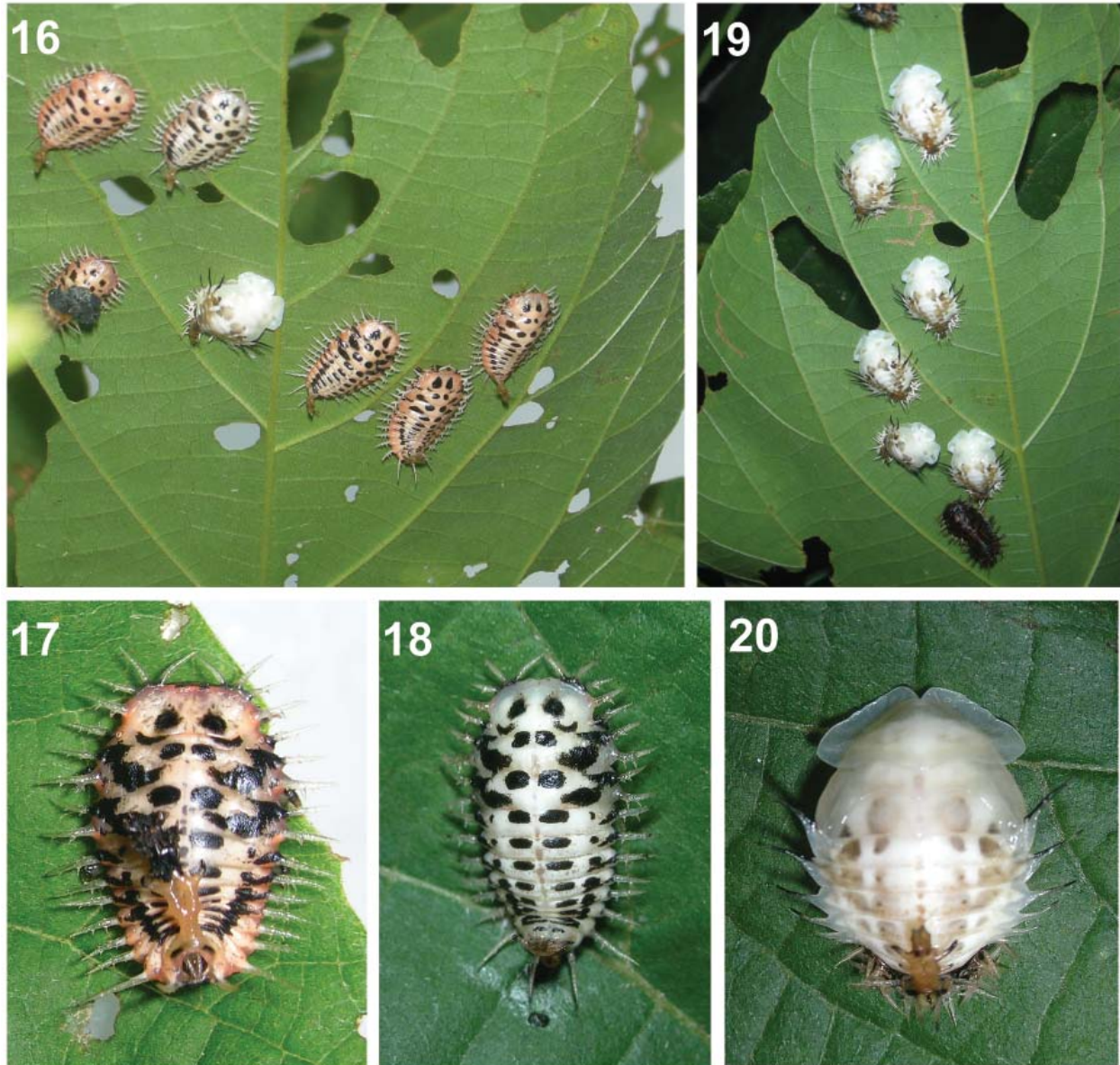
Figures 1–4. *Cordia hebeclada* Johnst. (Boraginaceae), host plant of *Discomorpha (Discomorpha) biplagiata* in Ecuador. **1)** Resprouting host plant on Pacific side of Ecuador, March 2011. **2)** Host plant, regrowing. **3)** Host plant, regrown. **4)** Feeding damage of older larvae and adults.



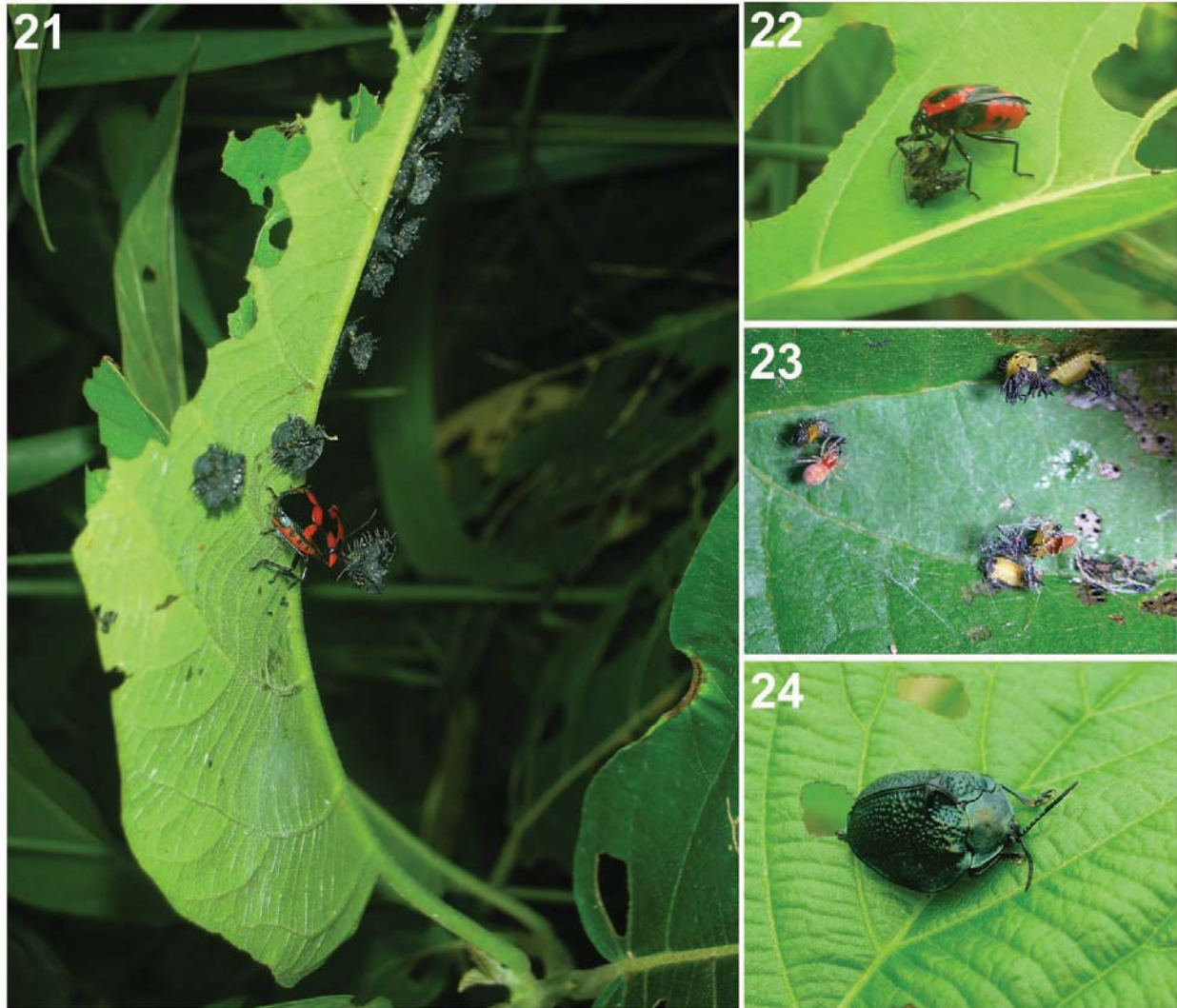
Figures 5–9. Juvenile stages of *Discomorpha (Discomorpha) biplagiata*. **5)** Two oothecae attached to midrib. **6)** Ootheca attached to lateral rib. **7)** 1st instars. **8)** 1st instars, shields not yet developed. **9)** 1st instars feeding gregariously at leaf apical margin, with shields developing.



Figures 10–15. Juvenile stages of *Discomorpha (Discomorpha) biplagiata*. **10)** 2nd instars, hardened shields well developed and feeding gregariously. **11)** 3rd instars feeding in smaller groups, and exhibiting color darkening. **12)** Late 3rd instars, body blackened and shields moist, still feeding gregariously by chewing leaf (not scraping; fly undetermined). **13)** 4th instars, with shields intact, feeding on leaf midrib after skeletonizing leaf. **14)** 5th instar. **15)** Larval feces on leaf.



Figures 16–20. Pupation of *Discomorpha* (*Discomorpha*) *biplagiata*. 16) Gregarious pupation, early stage. 17) 5th instar. 18) Prepupa. 19) Pupal group. 20) Pupa with color change and exuvial shield formed by cast skin of 5th instar; note urogomphus of 5th-instar exuviae.



Figures 21–23. Arthropod enemies of *Discomorpha* (*Discomorpha*) *biplagiata*. **21)** Larvae under attack by pentatomid adult. **22)** Pentatomid preying on larva. **23)** Spider attacking larva. **24)** Adult *Discomorpha biplagiata*.