

## Supplementary Materials: Design, Synthesis and Cellular Characterization of a Dual Inhibitor of 5-Lipoxygenase and Soluble Epoxide Hydrolase

Karin Meirer, Daniel Glatzel, Simon Kretschmer, Sandra K. Wittmann, Markus Hartmann, René Blöcher, Carlo Angioni, Gerd Geisslinger, Dieter Steinhilber, Bettina Hofmann, Robert Fürst and Ewgenij Proschak

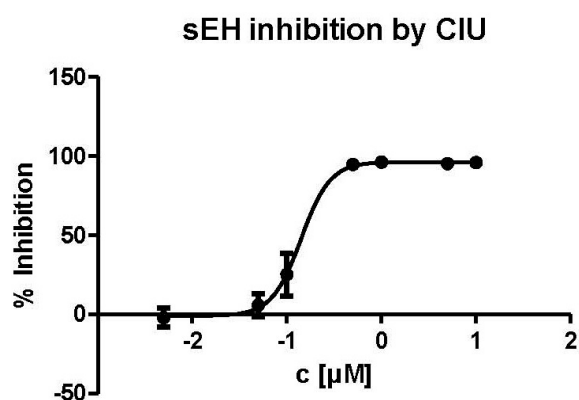


Figure S1. Inhibition of soluble epoxide hydrolase by reference inhibitor *N*-cyclohexyl-*N'*-(4-iodophenyl)urea (CIU).

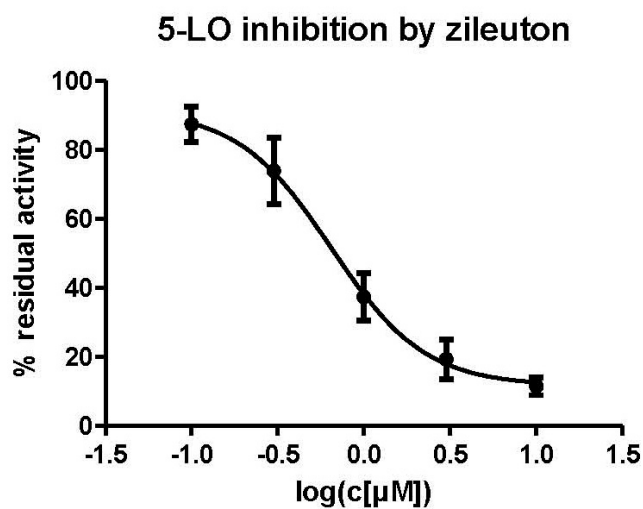
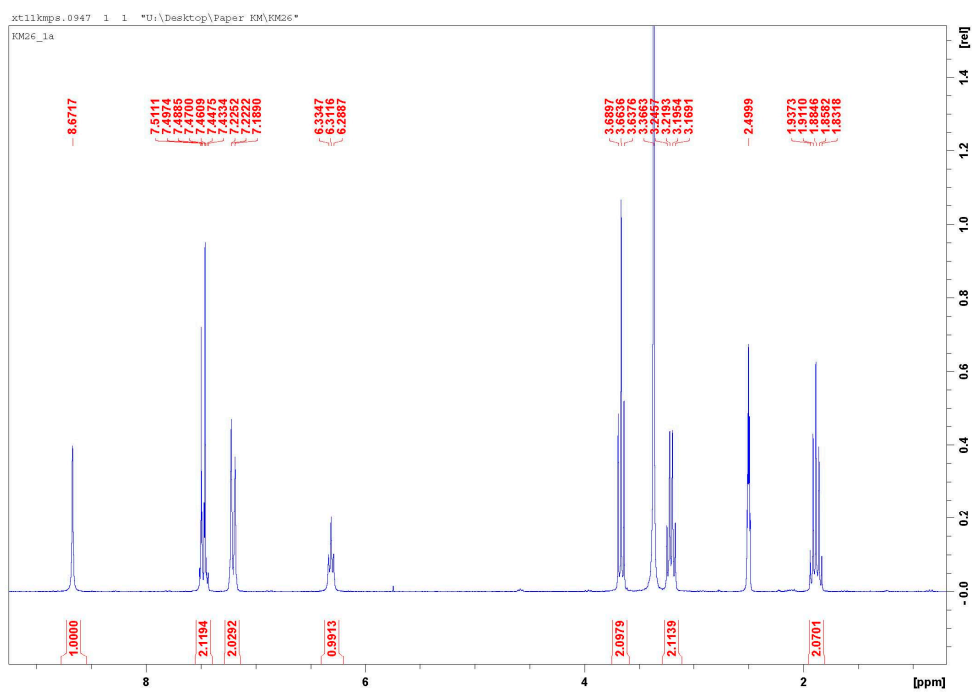
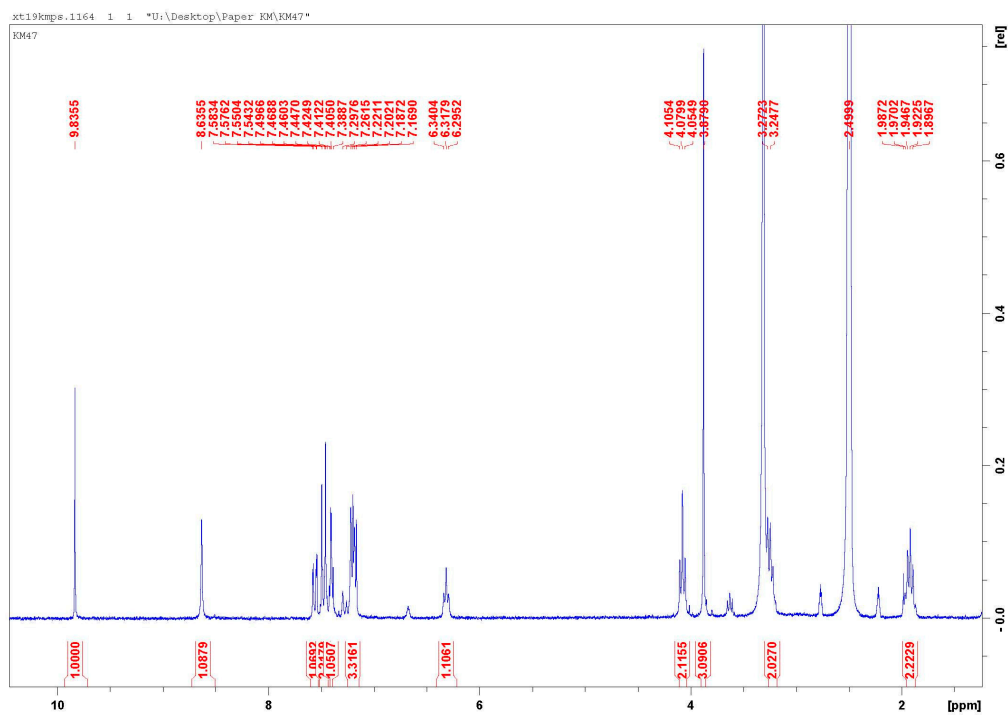
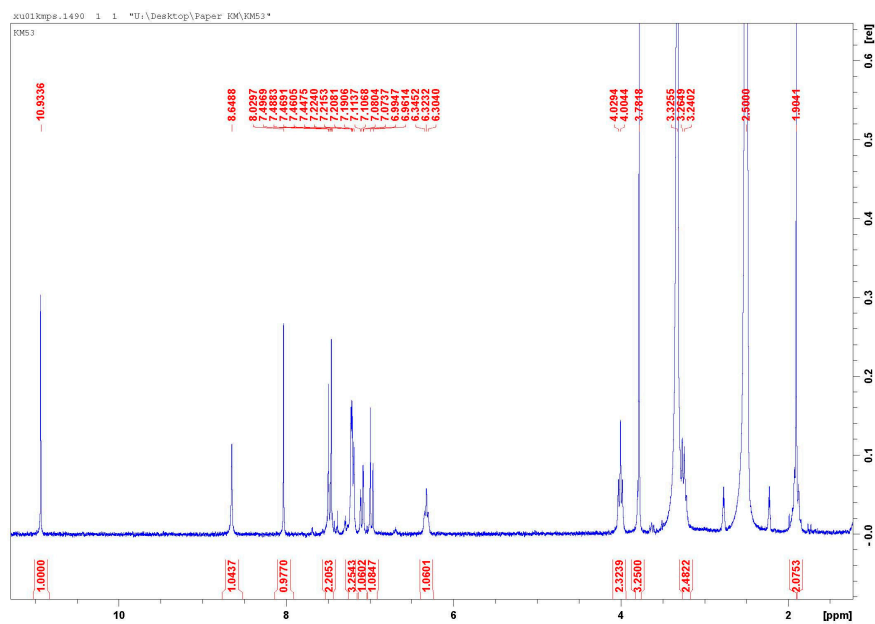
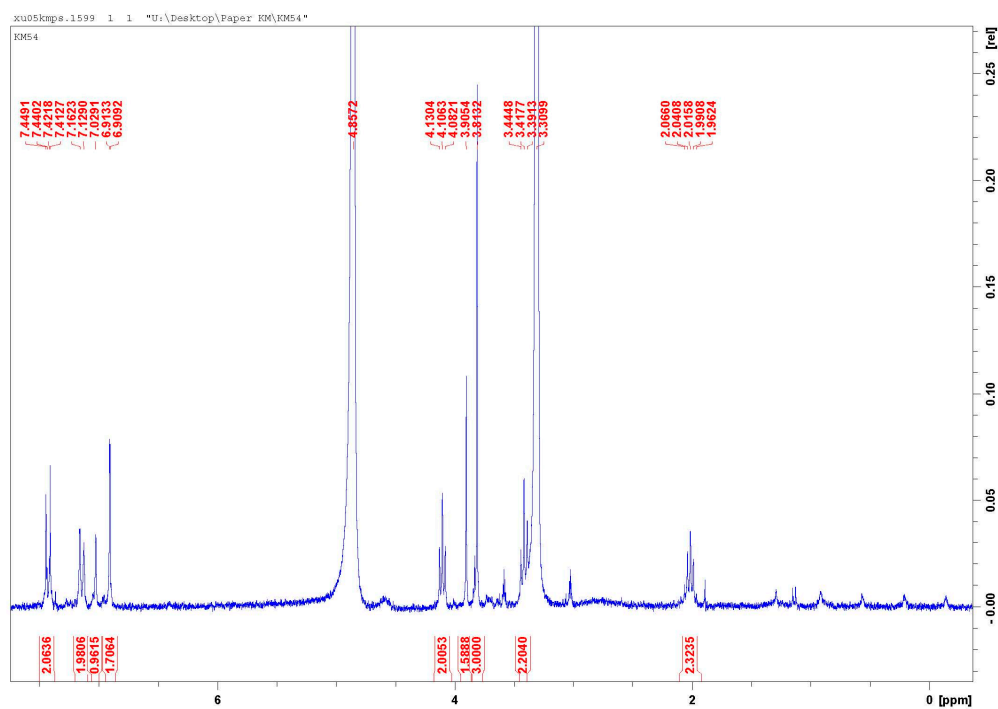
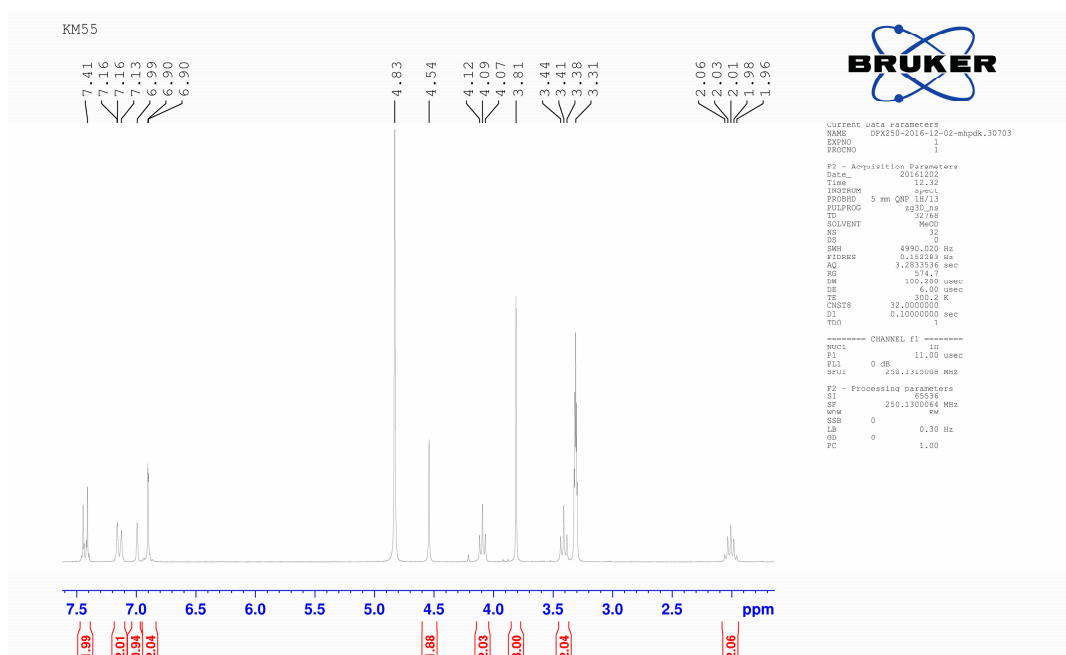
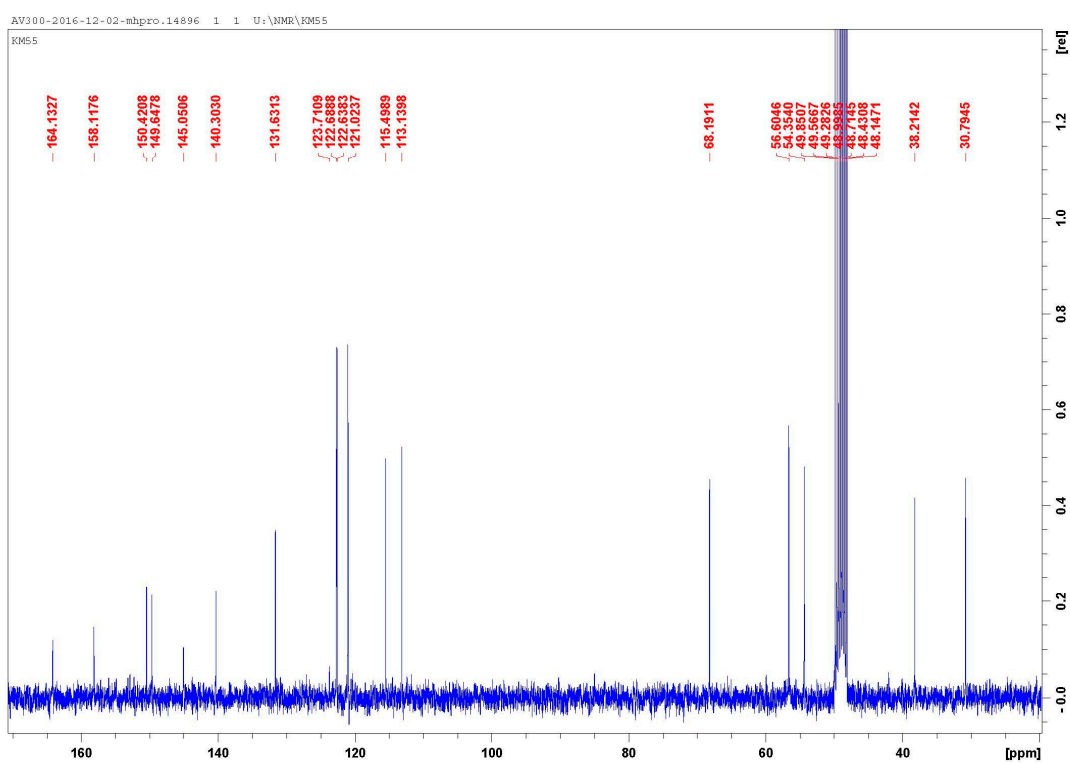


Figure S2. Inhibition of 5-lipoxygenase by reference inhibitor zileuton.

Figure S3. <sup>1</sup>H-NMR spectrum of compound 6.Figure S4. <sup>1</sup>H-NMR spectrum of compound 7.

Figure S5.  $^1\text{H-NMR}$  spectrum of compound 8.Figure S6.  $^1\text{H-NMR}$  spectrum of compound 9.

Figure S7.  $^1\text{H}$ -NMR spectrum of KM55.Figure S8.  $^{13}\text{C}$ -NMR spectrum of KM55.

07.12.2016 22:22:49 Page 1 / 2



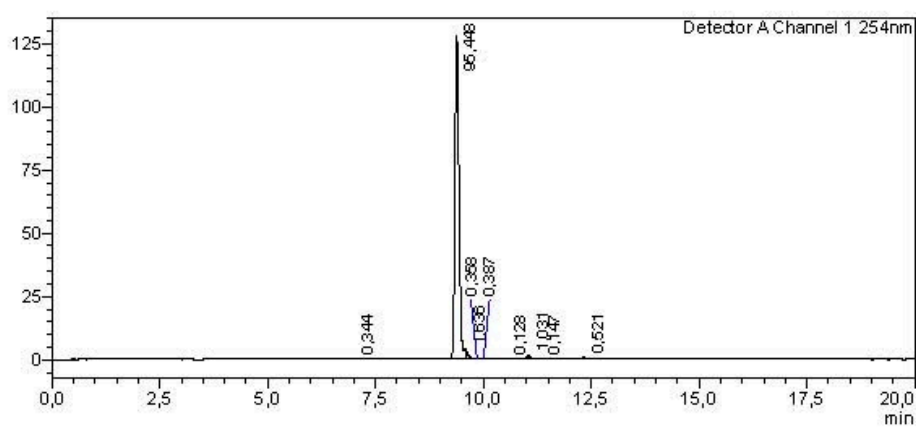
# Analysis Report

**<Sample Information>**

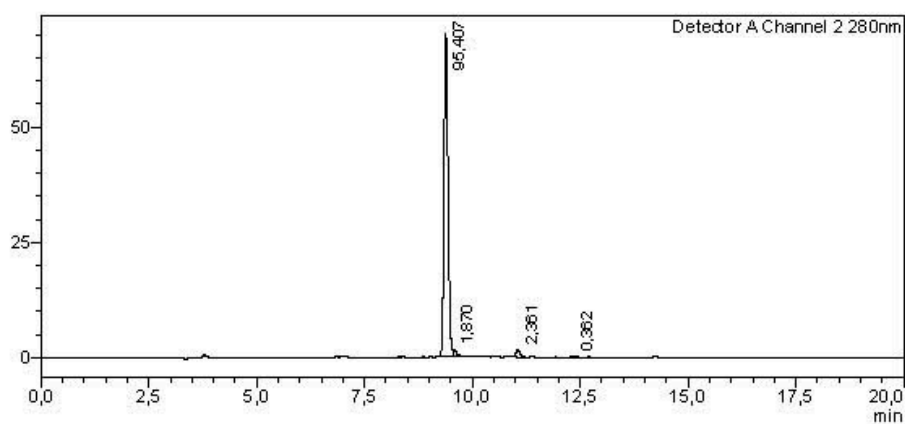
Sample Name : KM55  
 Sample ID :  
 Data Filename : KM55\_C18\_Scout\_Theresa\_Reinheitsbestimmung\_7.lcd  
 Method Filename : C18\_Scout\_Theresa\_Reinheitsbestimmung.lcm  
 Batch Filename : KM55\_Reinheit.lcb  
 Vial # : 1-6  
 Injection Volume : 20 µL  
 Date Acquired : 29.11.2016 16:34:38  
 Date Processed : 29.11.2016 16:54:39  
 Sample Type : Unknown  
 Acquired by : System Administrator  
 Processed by : System Administrator

**<Chromatogram>**

mAU



mAU



Peak Table

Peak#	Ret. Time	Area%
1	7.020	0.344
2	9.386	95.448

C:\LabSolutions\Data\Proschak\Markus\KM55\_C18\_Scout\_Theresa\_Reinheitsbestimmung\_7.lcd

Peak#	Ret. Time	Area%
3	9,596	1,636
4	9,851	0,358
5	10,010	0,387
6	10,560	0,128
7	11,055	1,031
8	11,342	0,147
9	12,340	0,521
Total		100,000

Detector A Channel 2 280nm

Peak#	Ret. Time	Area%
1	9,387	95,407
2	9,563	1,870
3	11,055	2,361
4	12,343	0,362
Total		100,000

Figure S9. Purity determination of KM55.