

RESEARCH

Open Access



Mobilization of hematopoietic stem cells with the novel CXCR4 antagonist POL6326 (balixafortide) in healthy volunteers—results of a dose escalation trial

Darja Karpova^{1,7}, Susanne Bräuninger¹, Eliza Wiercinska¹, Ariane Krämer¹, Belinda Stock¹, Jochen Graff², Hans Martin³, Achim Wach⁴, Christophe Escot⁴, Garry Douglas⁴, Barbara Romagnoli⁴, Eric Chevalier⁴, Klaus Dembowski⁴, Leon Hooftman⁴ and Halvard Bonig^{1,5,6*}

Abstract

Background: Certain disadvantages of the standard hematopoietic stem and progenitor cell (HSPC) mobilizing agent G-CSF fuel the quest for alternatives. We herein report results of a Phase I dose escalation trial comparing mobilization with a peptidic CXCR4 antagonist POL6326 (balixafortide) vs. G-CSF.

Methods: Healthy male volunteer donors with a documented average mobilization response to G-CSF received, following ≥ 6 weeks wash-out, a 1–2 h infusion of 500–2500 $\mu\text{g}/\text{kg}$ of balixafortide. Safety, tolerability, pharmacokinetics and pharmacodynamics were assessed.

Results: Balixafortide was well tolerated and rated favorably over G-CSF by subjects. At all doses tested balixafortide mobilized HSPC. In the dose range between 1500 and 2500 $\mu\text{g}/\text{kg}$ mobilization was similar, reaching 38.2 ± 2.8 CD34+ cells/ μL (mean \pm SEM). Balixafortide caused mixed leukocytosis in the mid-20 K/ μL range. B-lymphocytosis was more pronounced, whereas neutrophilia and monocytosis were markedly less accentuated with balixafortide compared to G-CSF. At the 24 h time point, leukocytes had largely normalized.

Conclusions: Balixafortide is safe, well tolerated, and induces efficient mobilization of HSPCs in healthy male volunteers. Based on experience with current apheresis technology, the observed mobilization at doses ≥ 1500 $\mu\text{g}/\text{kg}$ of balixafortide is predicted to yield in a single apheresis a standard dose of 4×10^6 CD34+ cells/kg from most individuals donating for an approximately weight-matched recipient. Exploration of alternative dosing regimens may provide even higher mobilization responses.

Trial Registration European Medicines Agency (EudraCT-Nr. 2011-003316-23) and *clinicaltrials.gov* (NCT01841476)

Keywords: PEM-technology, CXCR4, Mobilization, Transplantation, Apheresis, Stem cell, Plerixafor, G-CSF, Clinical trial, Plasmacytoid dendritic cell

Background

Most autologous and 80% of allogeneic hematopoietic stem cell transplantations (HSCT) are currently performed with mobilized peripheral blood stem cells [1].

These can be extracted by apheresis from the circulation after pretreatment of donors with the cytokine G-CSF, currently the most commonly used mobilizing agent [1]. Optimal mobilization with G-CSF in donors is relatively inconvenient as it takes 4–5 days [2–4]. G-CSF treatment, although generally considered safe, is regularly associated with acute (bone pain, flu-like symptoms, lethargy [5–8]) and more protracted (BM disruption [9],

*Correspondence: hbonig@uw.edu

⁵ Institute for Transfusion Medicine and Immunohematology, Goethe University, Sandhofstr. 1, 60528 Frankfurt, Germany
Full list of author information is available at the end of the article

suppression of B-lymphopoiesis [10]) adverse events; moreover, a considerable list of contra-indications to G-CSF has been identified over the years, mostly related to the induction of neutrophilia and neutrophil activation, but also to activation of lymphocytes [11]. On the recipient side, a greater risk of chronic graft-versus-host disease to G-CSF stimulated PBSCT vs. bone marrow-derived grafts has been reported [12]. Consequently, significant activity has been dedicated to the identification and development of alternative mobilizing agents that would combine predictable, efficient stem cell mobilization with single dose activity and good tolerability for both donor and recipient.

The ability of CXCR4 antagonists to rapidly dislodge stem cells from the marrow has been recognized for many years [13]. Previously studied compounds were neither universally well tolerated nor very potent [14]. The only currently approved CXCR4 antagonist plerixafor mobilized a median of 16 CD34+ cells per μL when administered alone (without G-CSF) in healthy donors [15], which is barely sufficient to generate a normal-sized graft in two apheresis sessions.

The synthetic protein epitope mimetic (PEM) peptidic CXCR4 antagonist POL5551, a close analogue of the clinical stage compound balixafortide (POL6326), shows a very wide pharmacodynamic range in preclinical models and at optimal doses even mobilizes more efficiently than G-CSF [16]. In this clinical phase I dose escalation trial we evaluated balixafortide with regard to its safety, tolerability, pharmacokinetics and mobilization efficiency in healthy male volunteers in comparison to G-CSF. Balixafortide was well tolerated and rated subjectively preferable to G-CSF according to the volunteers. Mobilization was rapid; dose-dependency was apparent at doses up to 1500 $\mu\text{g}/\text{kg}$ with an average peak mobilization of 38.2 ± 2.8 CD34 positive cells per μL .

Methods

Volunteers

Volunteers were healthy male HSC donors from the German Stem Cell Donor Registry (DSSD) who had received a 5-day course of filgrastim (G-CSF, 7.5–10 $\mu\text{g}/\text{kg}$ per day in 2 divided doses) for matched-unrelated stem cell donation and shown a grossly average mobilization response (121.6 ± 8.6 CD34+ cells/ μL). Additional eligibility (inclusion) criteria for treatment with balixafortide were the same as for G-CSF mobilized stem cell donation [11]. Between G-CSF mobilization/HSPC donation and study participation there was a wash-out period of at least 6 weeks.

Written informed consent was provided prior to performing any study related activities. The study and all related documents were approved by the local

Institutional Review Board (IRB) (#324/11) and the federal medicines agency BfArM (approval #61-3910-4037635). The trial was registered with the European Medicines Agency as EudraCT-Nr. 2011-003316-23 and on *clinicaltrials.gov* as NCT01841476.

Study drug was administered on an in-patient basis in the phase I clinical trial unit of Goethe University Medical Center, the 'Klinisches Studienzentrum Rhein-Main'. Volunteers were discharged 24 h after treatment, to return for a follow-up appointment 8–14 days thereafter.

Study design

This was a prospective Phase I open label dose escalation trial; The study design is summarized in Table 1. A total of 27 volunteers were treated with balixafortide. A treatment consisted of a single intravenous infusion of balixafortide in normal saline at doses of 500, 1000, 1500, 2000 and 2500 $\mu\text{g}/\text{kg}$, based on actual weight, followed by sequential clinical and blood analyses (see below). Initially conceived as a classical 3 + 3 dose escalation design, the volunteers were assigned to four groups defined by increasing dose levels of balixafortide (500, 1000, 1500, and 2000 $\mu\text{g}/\text{kg}$) administered by constant rate infusion at over 2 h. Subsequently, amendments were added to test additional modalities: Group 6 received 2500 $\mu\text{g}/\text{kg}$ under the same conditions. Volunteers assigned to Group 5 received a dose level of 2000 $\mu\text{g}/\text{kg}$ by a continuously increasing infusion rate (ramp-infusion instead of constant rate infusion) applied over 2 h. In group 7, a dose level of 1000 $\mu\text{g}/\text{kg}$ was infused over 1 h at a constant rate and compared (intra-individually) to the 2 h infusion given with an interval of ≥ 4 weeks. A second balixafortide treatment was furthermore tested in volunteers from groups 2, 3 and 6 with groups 2 and 3 receiving 2500 $\mu\text{g}/\text{kg}$ and group 6 given 1500 $\mu\text{g}/\text{kg}$ as the second infusion. In as far as not all volunteers from the initial phase of the study could be recalled, they were replaced by new volunteers receiving two treatments, to have a group size of at least 3 for each cross-over modality, explaining the variable dosing group sizes between 3 and 6 (Table 1). Thus, to allow for intra-individual comparison, 12 donors received a second dose of balixafortide (2 h constant infusion rate for all) after a minimum wash-out period of 4 weeks.

Vital signs were monitored immediately prior to and in the first 24 h after the start of the infusion of balixafortide; serial blood samples were drawn for biochemical safety profiling and pharmacokinetic/pharmacodynamic analyses. Given the cationic nature of the compound [17] the risk of local or systemic symptoms of histamine release was identified and anti-histamine treatment was proposed (per protocol) in case of such symptoms. After completion of the 2000 $\mu\text{g}/\text{kg}$ dosing group the protocol was amended to introduce prophylactic anti-histamine

Table 1 Study design

	1st treatment Dose ($\mu\text{g}/\text{kg}$)/infusion time (h)/infusion rate	2nd treatment Dose ($\mu\text{g}/\text{kg}$)/ infusion time (h)/ infusion rate
Group 1		
Volunteer 1	500/2/constant	–
Volunteer 2	500/2/constant	
Volunteer 3	500/2/constant	
Group 2		
Volunteer 1	1000/2/constant	2500/2/constant ^h
Volunteer 2	1000/2/constant	2500/2/constant ^h
Volunteer 3	1000/2/constant	–
Volunteer 4	1000/2/constant	2500/2/constant ^h
Group 3		
Volunteer 1	1000/1/constant ^h	1000/2/const. rate
Volunteer 2	1000/1/constant	1000/2/const. rate
Volunteer-3	1000/1/constant	1000/2/const. rate
Group 4		
Volunteer 1	1500/2/constant	2500/2/const. rate ^h
Volunteer 2	1500/2/constant ^h	2500/2/const. rate ^h
Volunteer 3	1500/2/constant	–
Volunteer 4	1500/2/constant	2500/2/const. rate ^h
Group 5		
Volunteer 1	2000/2/constant ^h	–
Volunteer 2	2000/2/constant	
Volunteer 3	2000/2/constant ^h	
Volunteer 4	2000/2/constant ^h	
Volunteer 5	2000/2/constant ^h	
Volunteer 6	2000/2/constant ^h	
Group 6		
Volunteer 1	2000/2/ramped	–
Volunteer 2	2000/2/ramped ^h	
Volunteer 3	2000/2/ramped	
Group 7		
Volunteer 1	2500/2/constant ^h	–
Volunteer 2	2500/2/constant ^h	1500/2/const. rate
Volunteer 3	2500/2/constant ^h	1500/2/const. rate
Volunteer 4	2500/2/constant ^h	1500/2/const. rate

A total of 27 volunteers were treated with 39 doses of balixafortide

In italics volunteers with histamine release associated AE

^h Anti-histamine premedication

^h Therapeutic anti-histamine treatment upon appearance of likely histamine release AEs

treatment in the dosage group $\geq 2500 \mu\text{g}/\text{kg}$. Volunteers who received prophylactic or therapeutic anti-histamine medication are listed accordingly in Table 1.

Objectives

Primary outcome parameters were safety and tolerability of balixafortide when compared to G-CSF, pharmacodynamics of mature and immature blood cell mobilization,

specifically the intra-individual comparison of balixafortide- and G-CSF-induced mobilization of HSPCs. Secondary objectives included pharmacokinetic analyses and identification of a suitable window for HSPC apheresis.

Pharmacokinetics

Plasma samples were collected at the indicated times and kept frozen until immediately before analysis.

Pharmacodynamics

Blood samples were collected at the indicated times (Figs. 1, 2, 3, 4, 5 and 6) and kept at room temperature (maximum 2–3 h.) until immediately before analysis. Complete blood counts were assessed with the Sysmex XT1800 hematology analyzer (Norderstedt, Germany). CD34+ cells were quantified using the single platform flow cytometry analysis with the SCE Kit [Becton–Dickinson (BD), Heidelberg, Germany] according to the manufacturer's instructions and ISHAGE guidelines [18]. In addition, multi-parametric flow cytometric analyses were performed to quantify co-mobilized mature cell subsets such as T (CD45+ CD3+), B (CD45+ CD19+) and NK (CD45+ CD56+ 16+) cells (Multitest, T cells, BD), T cell subpopulations (CD45+ CD3+ CD4+/CD8+, Multitest, TBNL cells, BD) and monocytes (CD45+ CD14+, all from BD). In addition, plasmacytoid dendritic cell progenitors (pro-pDCs) were identified as CD45dimCD34dimCD45RA + CD123high (all moABs from BD). Lyse-no-wash protocols were used in conjunction with BD counting beads for direct cell enumeration for CD34+ cells and T cell subsets; all other cell concentrations were calculated using frequencies relative to directly enumerated cell species, such as CD34+, CD45+ or CD3+ cells.

Circulating colony-forming units-culture (CFU-C) were quantified by plating aliquots of lysed peripheral blood in commercial cytokine-replete methylcellulose media (StemMACS HSC-CFU lite with Epo, human, Miltenyi Biotec GmbH, Bergisch-Gladbach, Germany).

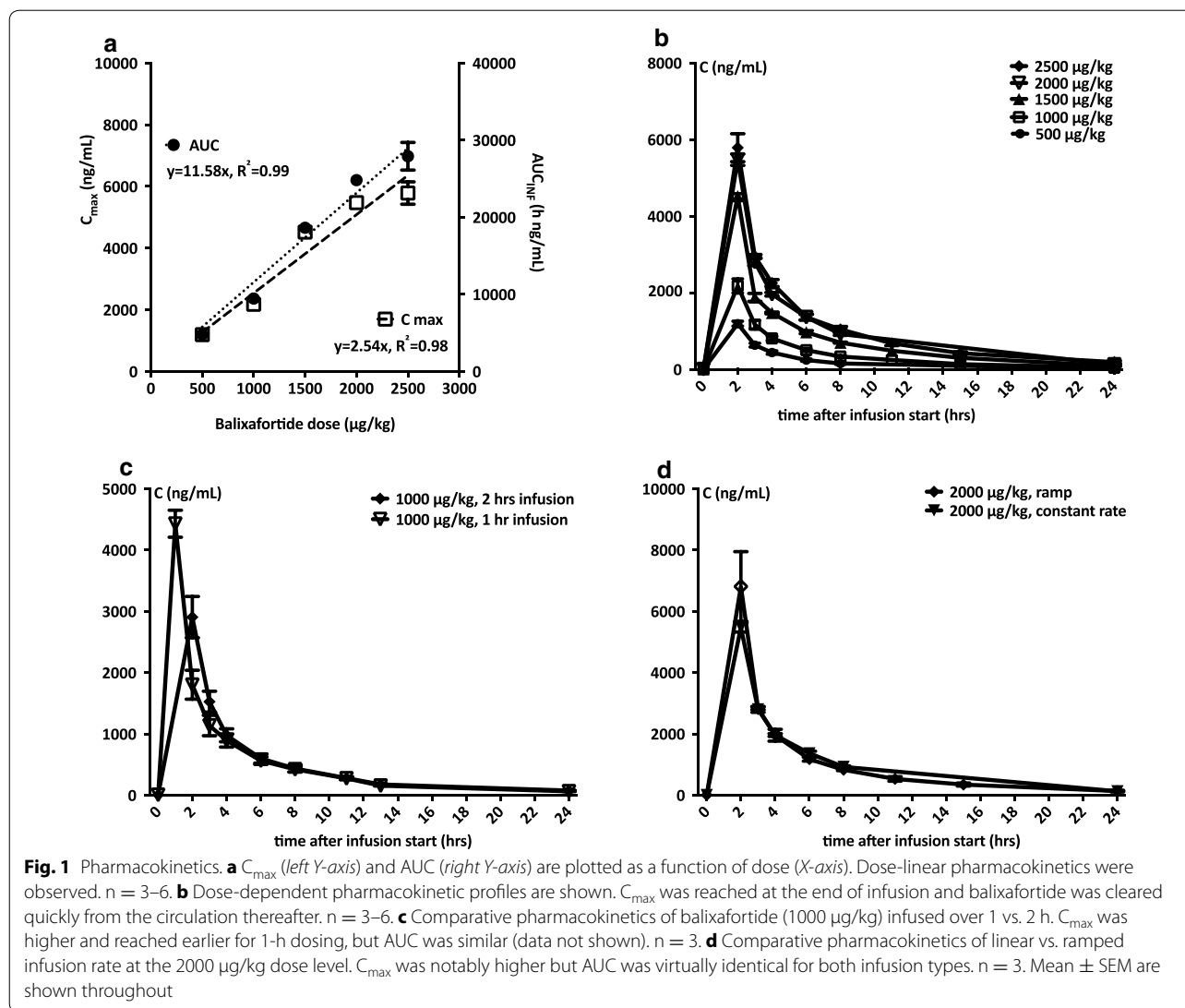
Statistical analysis

Unless otherwise mentioned, data are expressed as mean \pm SEM. Descriptive statistics and Student's t-test for paired or unpaired analysis (as appropriate) were calculated using Excel. A $p < 0.05$, Bonferroni-corrected for multiple testing if appropriate, was considered statistically significant.

Results

Safety and tolerability

A summary of adverse events that were documented throughout the trial is shown in Table 2. No severe adverse events (SAEs) were observed. Mild skin reactions



such as flushing, urticaria or local itching were reported by 1/3, 4/10, 2/7, 8/9 and 7/10 volunteers receiving 500, 1000, 1500, 2000 and 2500 $\mu\text{g}/\text{kg}$ of balixafortide respectively. Upon treatment with a combination of H1 and H2 blockers symptoms rapidly abated. These reactions were rated likely related to study drug.

Three adverse events (AEs) were considered possibly related to study drug: mild bone pain (1 subject), an unexplained elevation in serum creatinine kinase (2 subjects), and a systolic blood pressure reading of >150 mmHg (2 subjects).

Constant-slope infusion, tested at the 2000 $\mu\text{g}/\text{kg}$ dose level in three volunteers (group 6), as well as increased infusion rates (1 vs. 2 h, group 3), tested in paired analyses in three volunteers at the 1000 $\mu\text{g}/\text{kg}$ dose level, did not influence the tolerability of the agent (Table 1).

At the time of follow-up, volunteers were questioned about their subjective rating of G-CSF vs. balixafortide as mobilizing agents; there was an overwhelming preference for balixafortide. See also Table 3 for the questionnaire and volunteer responses.

Pharmacokinetics

Serial plasma samples were assayed for balixafortide concentrations and pharmacokinetic parameters were calculated using Phoenix WinNonlin 6.4. We observed dose linearity for both C_{max} and AUC (Fig. 1a). The volume of distribution was approximately 500–600 mL/kg. Balixafortide was cleared from plasma with a terminal half-life of approximately 5 h over all application schemes and doses of $5:45 \pm 0:35$ h (mean \pm SD; Fig. 1b). The clearance of balixafortide appeared to be almost equal to the

glomerular filtration rate suggesting that balixafortide is mainly cleared through the kidney. Different infusion durations (1 vs. 2 h) did not notably influence the PK profile except for an earlier C_{max} (Fig. 1c), and the same applied to ‘constant-slope’ vs. ‘ramp’ infusion (Fig. 1d).

Pharmacodynamics—mobilization of immature cells

At all doses tested, balixafortide infusions quickly resulted in an increase in circulating HSPCs, as measured phenotypically (CD34+ cells, Fig. 2a) or functionally in colony assays (Fig. 2b). Clonogenicity of balixafortide vs. G-CSF mobilized CD34+ cells was lower with 1 CFU-C out of 5.9 ± 0.5 balixafortide mobilized CD34+ cells vs.

1 CFU-C out of 3.2 ± 0.2 CD34+ cells mobilized with G-CSF (Fig. 2c). At lower doses (500 vs. 1000 vs. 1500 µg/kg), dose-dependent mobilization was clearly observed, while the later dose increments to 2000 and 2500 µg/kg did not result in a commensurate increase in the number of mobilized HSPC compared to 1500 µg/kg (Fig. 3a, b). This was confirmed in paired analyses in small cohorts (Fig. 3c). Therefore, for some analyses all mobilization data for doses ≥1500 µg/kg are analyzed together. As such, mean peak mobilization in response to doses of 1500–2500 µg/kg was 38.2 ± 2.8 CD34+ cells/µL (Fig. 3d). Thus at these doses intra-individual comparison of balixafortide vs. G-CSF induced mobilization revealed that—on

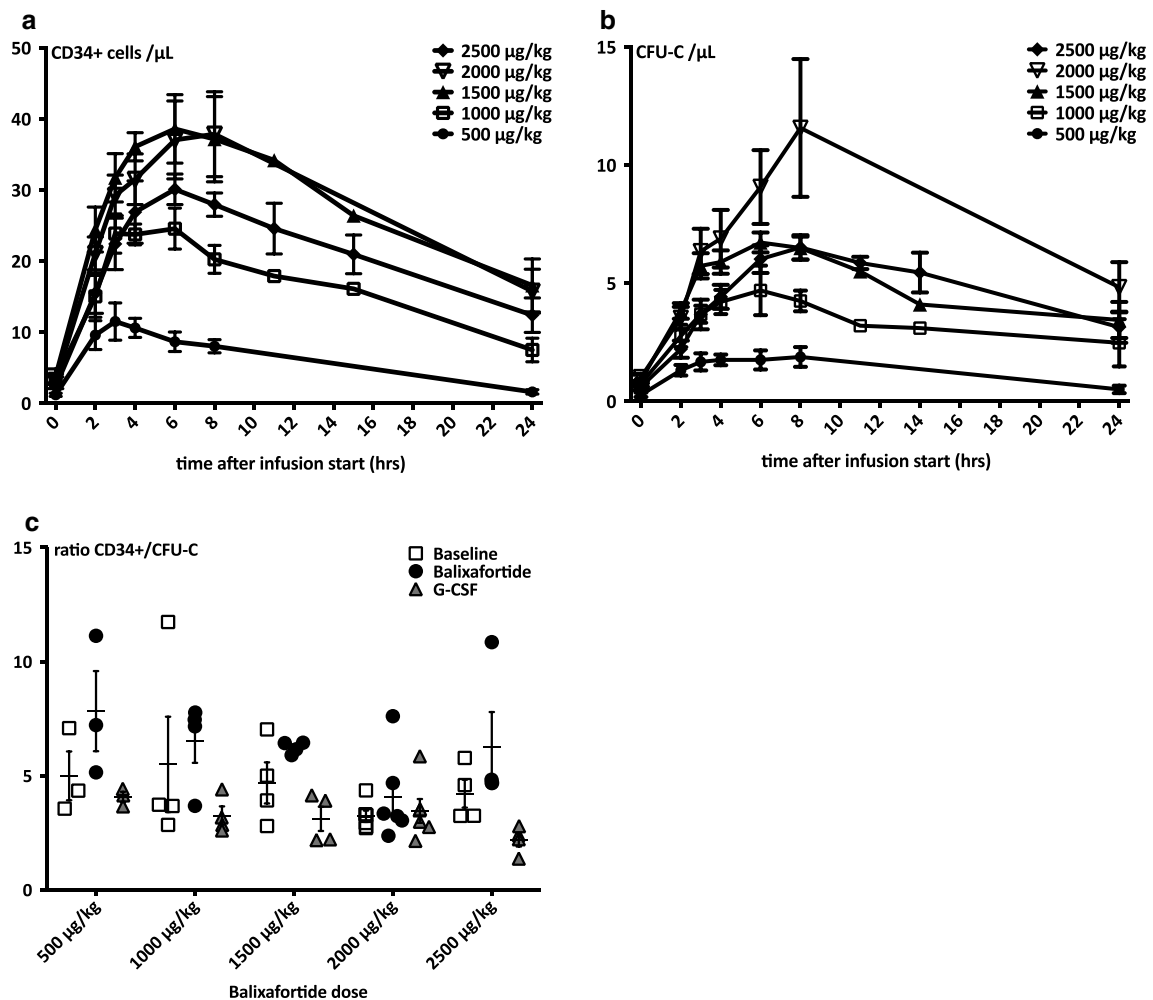
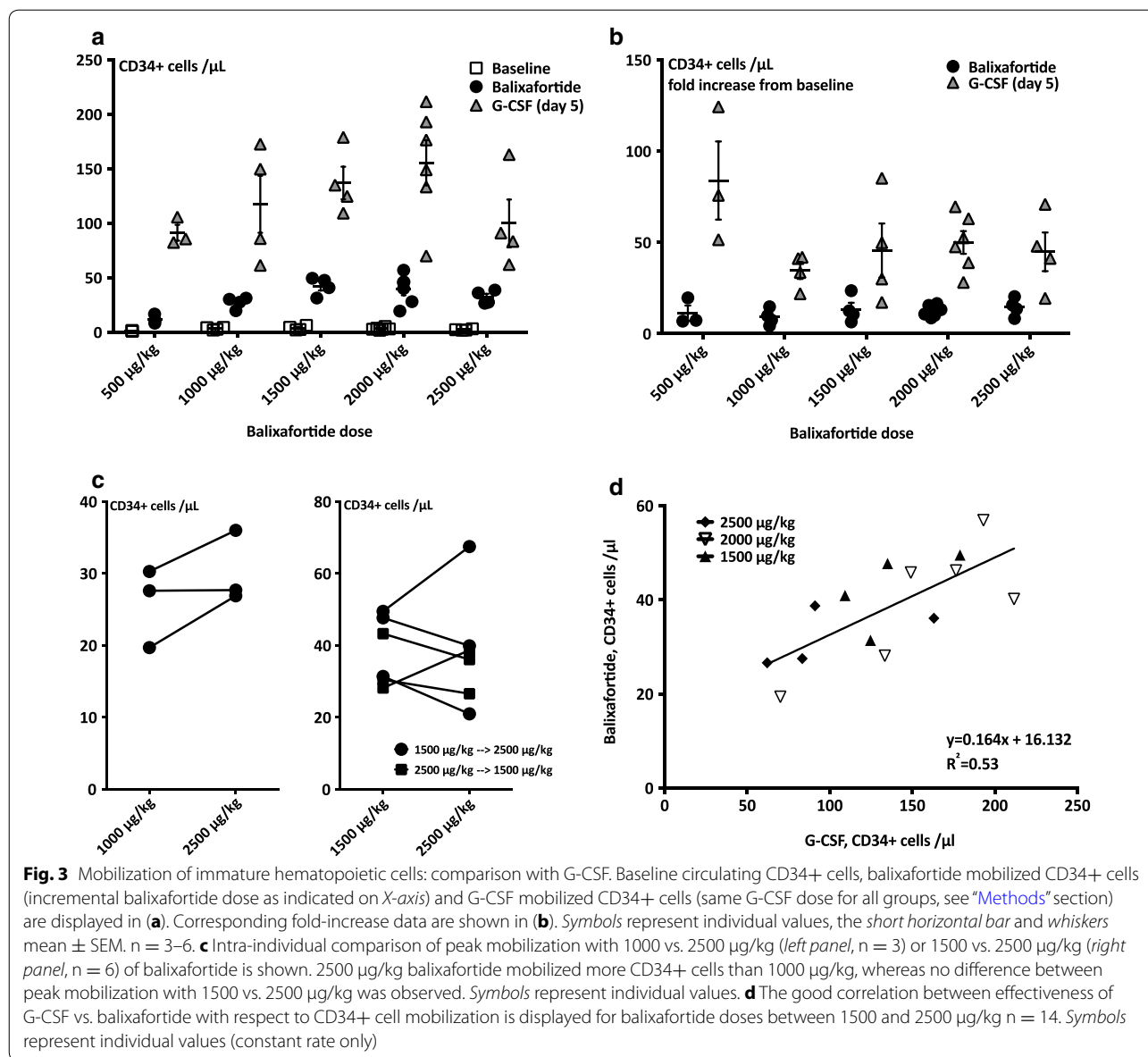


Fig. 2 Pharmacodynamics: mobilization of immature hematopoietic cells. **a, b** Dose-dependent mobilization of phenotypically (CD34+ , *panel a*) or functionally (CFU-C, *panel b*) defined stem and progenitor cells (HSPCs). HSPC mobilization was observed at all dose levels. Mobilization at the lowest dose level peaked 1 h after the end of the infusion and was delayed after higher doses. Dose dependence was observed for the first three dosing steps (n = 3–6, mean ± SEM). **c** The ratio between circulating CD34+ cells and CFU-C is shown for all doses. Clonogenicity of balixafortide mobilized CD34+ tended to be lower than for G-CSF mobilized CD34+ cells. Symbols represent individual values, the short horizontal bar and whiskers mean ± SEM. n = 3–6

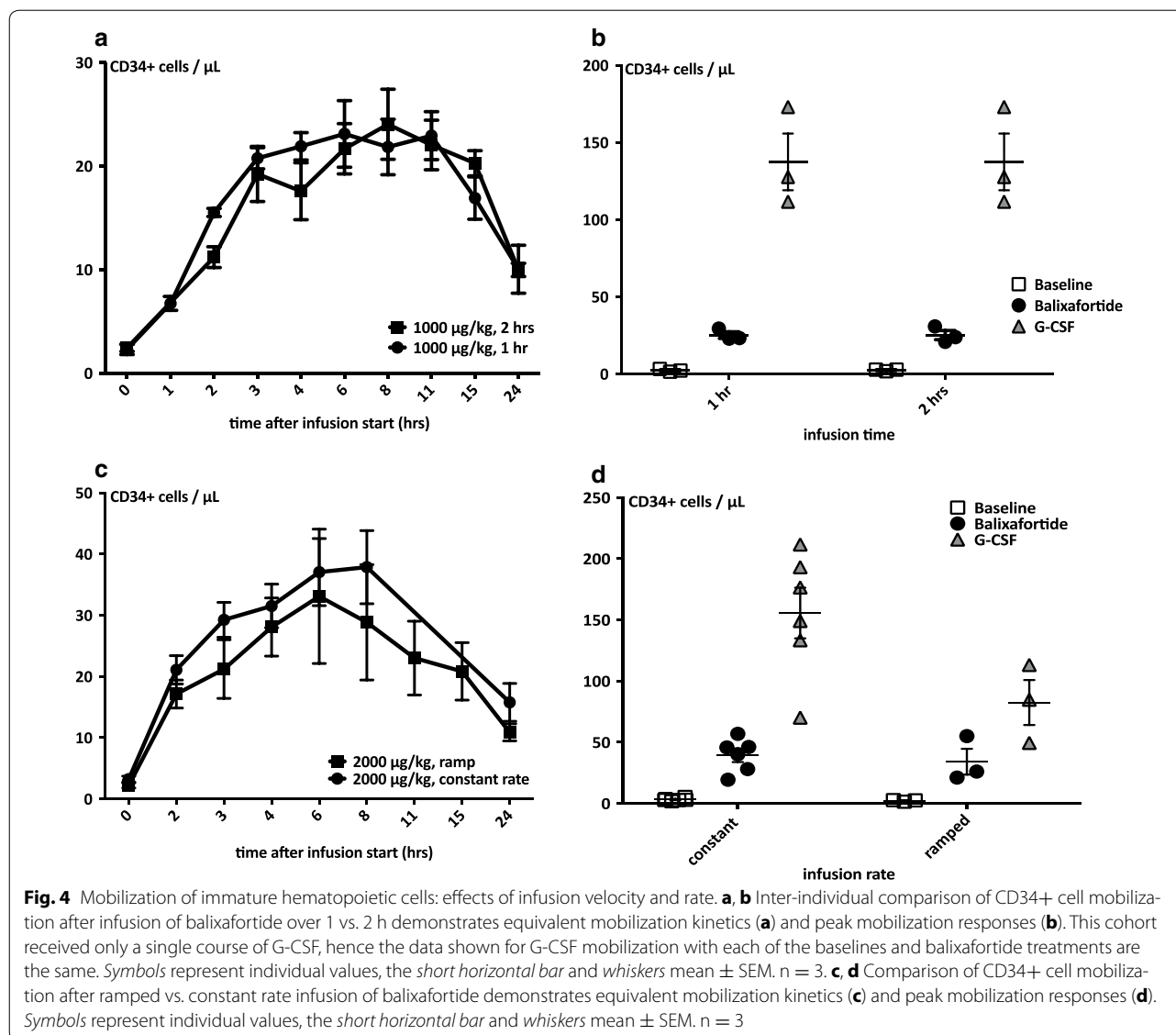


average—the G-CSF regimen was about three times as effective as the CXCR4 antagonist. There appeared to be a good correlation between the two mobilizing agents (Fig. 3d), suggesting that—as had been shown in mice [16, 19]—good mobilizers mobilize efficiently with either agent and poor mobilizers are refractory to both.

Peak mobilization at the 500 $\mu\text{g}/\text{kg}$ dose was observed 1 h after the end of the balixafortide infusion/after reaching C_{max} (Figs. 1b, 2a). At higher doses, the observed mobilization peak appeared later, approximately 4 h after the end of the infusion. Thereafter, the number of circulating CD34+ cells slowly decreased but remained

elevated beyond baseline at the 24 h time point for all except the lowest dose (Fig. 2a, b). Constant-slope (ramp) vs. constant-rate infusions (at 2000 $\mu\text{g}/\text{kg}$ only) had no discernible effect on stem cell mobilization efficiency, and the same applied to infusion rate (1 vs. 2 h) (Fig. 4).

A population of “stem cells” co-expressing CD45RA and CD123, previously described in blood of plerixaformobilized donors and identified as plasmacytoid dendritic cell progenitors (pro-pDCs) [20], was detected at high frequencies ($22.4 \pm 2.3\%$ of SSCdim/FSCmid-hi/CD45dim/CD34+ cells) after balixafortide-treatment, but was rare after G-CSF (Fig. 5).



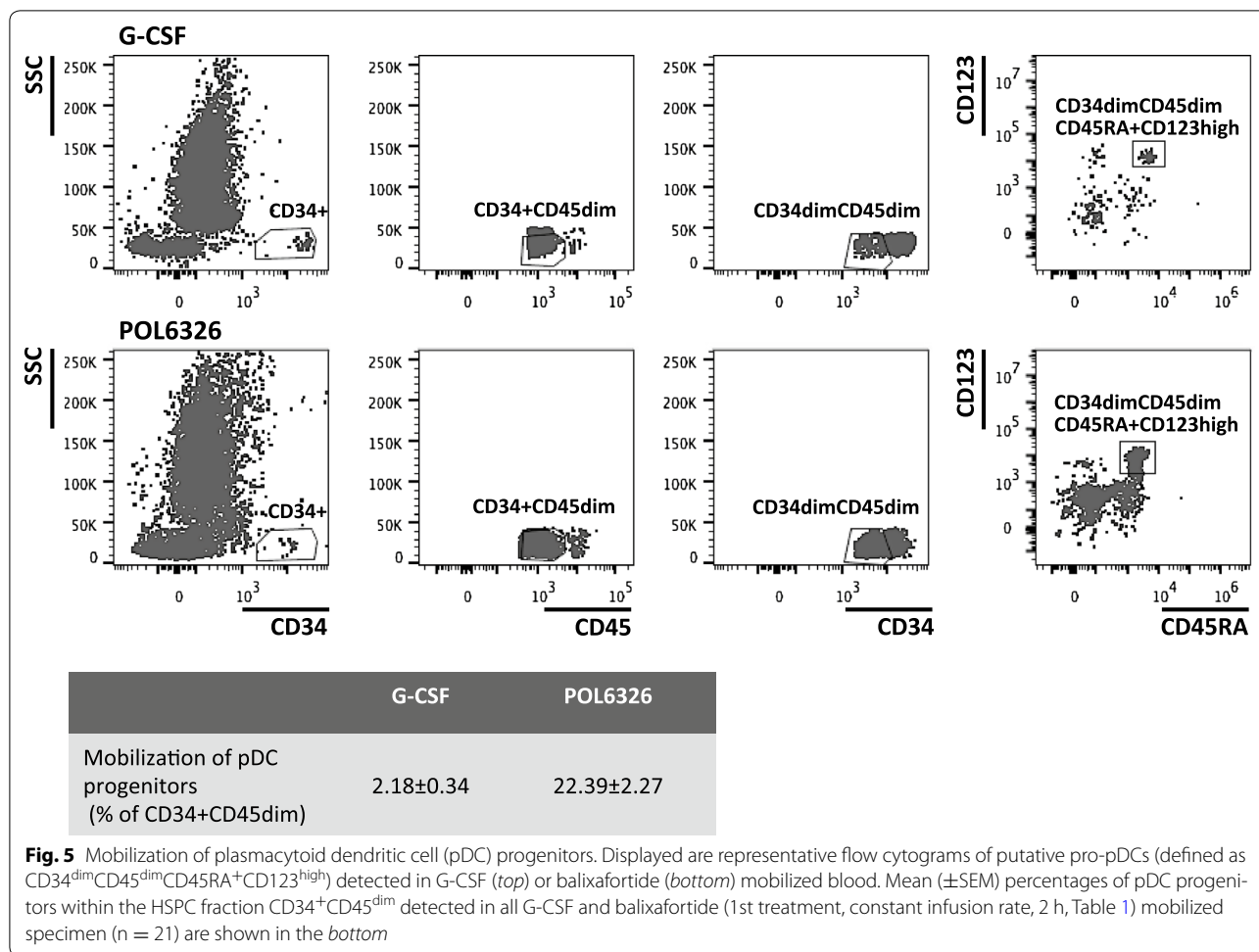
Pharmacodynamics—mobilization of mature hematopoietic cells

Stem cell mobilization was accompanied with mixed leukocytosis affecting all cell lineages. It followed the same kinetics as stem cell mobilization and was dose-dependent as well as short-lived. At balixafortide doses of 1500–2500 $\mu\text{g}/\text{kg}$ white blood counts (WBCs) of $25.3 \pm 1.4 \times 10^3 \text{ WBC}/\mu\text{L}$ were reached, i.e. balixafortide mobilized approximately half as many mature cells as G-CSF (Fig. 6a). The lineage distribution of mature leukocytes differed markedly between both agents, in that balixafortide mobilized higher relative and absolute numbers of B-cells and fewer myeloid cells (Fig. 6b, c). The ratio between T-lymphocytes and CD34+ cells was $26.2 \pm 1.98:1$ in G-CSF mobilized blood, vs. $95.7 \pm 8.9:1$

in balixafortide mobilized blood, predicting that apheresis products from balixafortide mobilized donors will contain more T-cells than from G-CSF treated donors. Within the T cell population the proportion of T helper (CD4+) and cytotoxic T cells (CD8+) was very similar between the differently mobilized blood specimens as well as compared to steady state (baseline) (Fig. 6d).

Discussion

We performed a Phase I clinical trial to directly compare the novel CXCR4 antagonist balixafortide with the standard mobilizing agent G-CSF, with regard to the following parameters: safety and tolerability, pharmacokinetic profile, and pharmacodynamic effects; the latter were defined as mobilization volumes of immature and mature



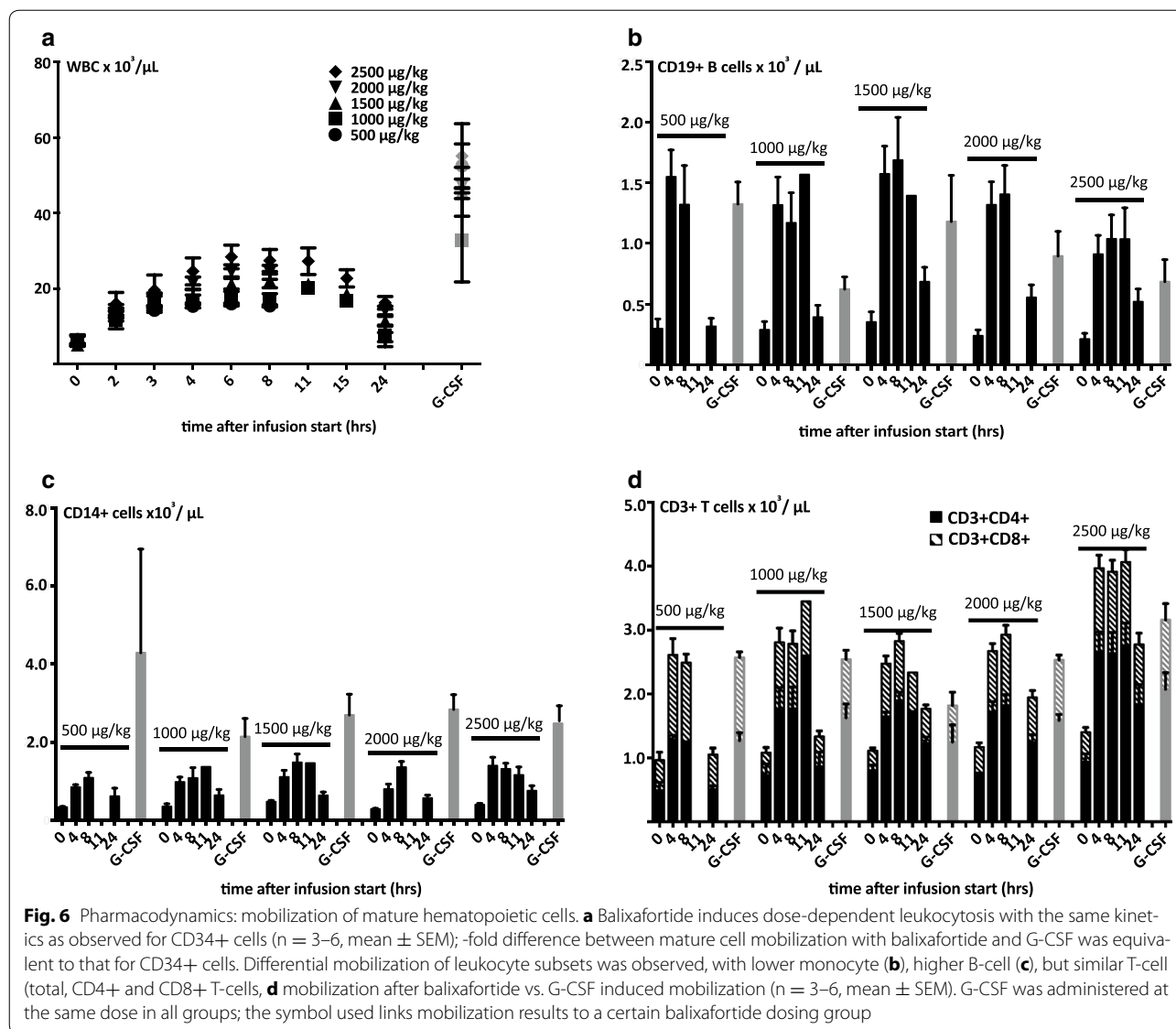
blood cells. At the doses tested, balixafortide was associated with few adverse effects, and none of these were dose limiting. Skin symptoms compatible with possible local histamine release syndrome were observed with some regularity but could easily be managed with routine co-administration of anti-histamines.

Mechanistically, mobilization with CXCR4 antagonists like balixafortide involves a rather short-lived interference with stem cell retention in the bone marrow [13]. Therefore some of the proposed (albeit never robustly substantiated) long-term adverse effects of G-CSF should not rationally be associated with balixafortide treatment. Specifically, we speculate that, unlike G-CSF, balixafortide may be a safe mobilizing agent for patients (and donors) with autoimmune conditions [21, 22] as well as sickle cell disease [23, 24]. Formal questionnaires also confirm good tolerability and, in fact, indicate a preference for balixafortide vs. G-CSF, although the study setting may have favored balixafortide.

The higher balixafortide doses tested in this study mobilized 38.2 ± 2.8 CD34+ cells/μL. In view of the

currently available technologies [25, 26] this is sufficient to generate a stem cell product with an average of 5 × 10E6 CD34 + donor cells/kg as per a single apheresis; this constitutes an adequate number of cells for the average PBSCT [i.e. >4 × 10E6/kg (weight of recipient), and would even accommodate patients with a body weight that is somewhat higher than their donor. That said, data in mice [16] and cynomolgus monkeys (unpublished) indicated a semi-logarithmic dose-response relationship with a high ceiling; extrapolating from these data we postulate that further dose increments of balixafortide are possible. Further studies with higher doses of balixafortide are therefore warranted as meaningfully higher stem cell yields may be achieved—provided these doses are well tolerated.

The comparator agent in our study was G-CSF given in split doses as is routine practice in our center [7]; the rationale is twofold: more efficient mobilization and potentially better tolerability [27–30]. The alternative regimen that is widely used in the USA employs the same daily dose but makes use of a single injection for which



average CD34+ cell counts in the mid-sixties' range (per μL) were reported [6] i.e. less than two-thirds of what is achieved with split-dose G-CSF. Thus the advantage in efficiency of single-dose G-CSF vs. balixafortide at the doses tested here would be less than twofold.

High frequencies of a population presumed to represent precursors of plasmacytoid dendritic cells (pro-pDCs) were previously detected in plerixafor-mobilized blood [20] and were also found by us in balixafortide-mobilized blood (Fig. 5). This indicates a substance class specific mobilization effect and is in fact in line with reports showing the importance of the CXCR4/CXCL12 pathway in pro-pDC development (and retention) in mice [31]. The biological function of pro-pDCs in a graft is unclear. As they have been associated with

immunomodulatory functions [32] such as promotion of regulatory T cell differentiation [33, 34], it is tempting to speculate about a possible role in modulating graft-versus-host disease (GvHD). Indeed, in a cohort of patients receiving a plerixafor-mobilized graft only 1/20 developed acute GvHD 3^o or 4^o [15] which is markedly less than would be expected with G-CSF-mobilized blood [12, 35, 36] and which was not accompanied by an excessive relapse rate. These data are potentially meaningful given the much higher T-cell dose co-transplanted with a CXCR4 antagonist-mobilized graft.

As all other mobilizing regimes, mobilization by balixafortide was associated with marked leukocytosis; the-fold difference for mature and immature cell mobilization between G-CSF and balixafortide was quite

Table 2 Safety and tolerability of balixafortide. Summary of adverse events

Dose ($\mu\text{g}/\text{kg}$)	500	1000	1000	1500	2000	2000	2500
Infusion time/rate	2 h./const.	2 h./const.	1 h./const.	2 h./const.	2 h./const.	2 h./ramp	2 h./const.
n Volunteers	3	7	3	7	6	3	10
Volunteers with AE	1	5	1	2	6	2	7
Erythema				1	4		7
Pruritus		2	1	1	4	2	
Infusion site erythema	1			2			
Infusion site pruritus		1		1			
Urticaria				1	1		
Flushing					1	1	
Hypoesthesia oral							2
BP increase		2					
Blood CK increased					2		
Infusion site irritation				1			
Feeling hot							1
Muscle tightness							1
Headache							1
Hypoesthesia					1		1
Throat tightness							1
Bone pain					1		
Vertigo							1

A total of 27 volunteers were treated with 39 doses of balixafortide. Therefore some volunteers (12) were included in two different groups, when adverse events per dose-group were assessed. Responses to all items were binary (yes/no), not quantitative; multiple responses were possible

Table 3 Safety and tolerability of balixafortide. Subjective rating

Side effects in the course of treatment with:	G-CSF	Balixafortide
Abdominal pain	2	0
Bone pain	24	0
Headache	11	1
Skin reactions	1	13
Flu-like symptoms	21	0
Vomiting	0	1
Palpitation	1	0
Fever	2	0
Sweating	0	1
Fatigue	11	4
Insomnia	0	1
The treatment is		
Easy to use	7	29
Acceptable	13	30
More convenient overall	2	32

similar. However, the distribution of leukocyte subtypes was markedly different; specifically the virtually diagnostic left-shifted neutrophilia in G-CSF treated volunteers [2, 5] was not observed after balixafortide. These observations support the prediction that balixafortide

mobilizes without stimulation and lineage skewing and might thus be suitable for patients in whom such could result in undesirable side effects.

One of the desired features of a mobilizing agent is predictability of efficacy. Mouse data clearly indicate that mobilization efficiency is dominated by genetics [37, 38] but that the delta or-fold difference (e.g. between C57Bl/6 and DBA/2 mice) is much closer for CXCR4 antagonists than for G-CSF [16]. Although differences in G-CSF mobilization efficiency in our trial were less apparent due to inclusion criteria (average mobilization), our data clearly confirm the strong donor-inherent component for the efficiency of stem cell mobilization per se on the one hand and less pronounced variability in mobilization response with balixafortide on the other hand.

Conclusion

We have demonstrated that HSPC mobilization with balixafortide can be both efficient and predictable; more potent mobilization may be achievable with higher doses of this agent, as future studies may be able to show. Balixafortide treatment was safe and well tolerated. Because of its mechanism of action along with its rapid elimination, this stem cell mobilizing agent can be considered an option for many of the patients and donors with contra-indications to G-CSF. Its brisk mobilization after

one single dose is also highly convenient for donors and apheresis centers. In aggregate, balixafortide could be developed as an alternative single-agent mobilizing agent for patients and donors alike. By extension, our work also demonstrates the potential of PEM technology for rational drug design.

Authors' contributions

DK, SB, EW, AK, BS performed research. DK, JG, HM, AW, CE, GD, BR, EC, KD, LH and HB planned and analysed experiments. DK and HB wrote the paper. CE and LH edited the manuscript. HB bears the overall responsibility for the studies. All authors discussed, commented on and approved the final version of the manuscript. All authors read and approved the final manuscript.

Author details

¹ German Red Cross Blood Service BaWüHe, Institute Frankfurt, Frankfurt, Germany. ² Clinical Trial Center Rhein-Main (KSRM), Pharmazentrum Frankfurt/ZAFES, Institute of Clinical Pharmacology, Goethe University, Frankfurt, Germany. ³ Department of Medicine II, Goethe University, Frankfurt, Germany. ⁴ Polyphor Ltd, Allschwil, Switzerland. ⁵ Institute for Transfusion Medicine and Immunohematology, Goethe University, Sandhofstr. 1, 60528 Frankfurt, Germany. ⁶ Department of Medicine, Division of Hematology, University of Washington, Seattle, WA, USA. ⁷ Present Address: Department of Internal Medicine, Division of Oncology, Section of Stem Cell Biology, Washington University Medical School, St. Louis, MO, USA.

Acknowledgements

DK is a scholar of the German Academic Exchange Service (Postdoctoral fellowship-ID: 57054578, 2014-2016). HB is a member of LOEWE Cell and Gene Therapy Frankfurt faculty, funded by Hessian Ministry of Higher Education, Research and the Arts ref.no.: III L 4- 518/17.004 (2013). HB acknowledges funding by Deutsche Forschungsgemeinschaft grant BO3553/1-1.

Competing interests

The study was sponsored and largely funded by Polyphor, makers and suppliers of the compound tested here, and several co-authors were or are employees of Polyphor (AW, CE, GD, BR, EC, KD, LH). HB has received research funding from Polyphor (makers of balixafortide), has received research funding and has served on the advisory board and speakers' bureau of Sandoz-Hexal (makers of a biosimilar Filgrastim G-CSF), has received research funding from Chugai (makers of Lenograstim G-CSF) and has received honoraria from Genzyme (makers of plerixafor).

Availability of data and materials

The datasets analysed during the current study available from the corresponding author and with permission of Polyphor Inc. on reasonable request.

Ethics approval and consent to participate

The study and all related documents were approved by the local Institutional Review Board (IRB) (#324/11) and the federal medicines agency BfArM (approval #61-3910-4037635). The trial was registered with the European Medicines Agency as EudraCT-Nr. 2011-003316-23 and on *clinicaltrials.gov* as NCT01841476.

Funding

The study was sponsored and largely funded by Polyphor, makers and suppliers of the compound tested here.

Received: 10 October 2016 Accepted: 8 December 2016

Published online: 03 January 2017

References

1. Gratwohl A, Baldomero H, Gratwohl M, Aljurf M, Bouzas LF, Horowitz M, et al. Quantitative and qualitative differences in use and trends of hematopoietic stem cell transplantation: a global observational study. *Haematologica*. 2013;98:1282–90.
2. Anderlini P, Champlin RE. Biologic and molecular effects of granulocyte colony-stimulating factor in healthy individuals: recent findings and current challenges. *Blood*. 2008;111:1767–72.
3. Kroger N, Kruger W, Renges H, Zeller W, Rauhoft C, Loliger C, et al. Comparison of progenitor cell collection on day 4 or day 5 after steady-state stimulation with G-CSF alone in breast cancer patients: influence on CD34+ cell yield, subpopulation, and breast cancer cell contamination. *J Hematother Stem Cell Res*. 2000;9:111–7.
4. Kroger N, Zander AR. Dose and schedule effect of G-CSF for stem cell mobilization in healthy donors for allogeneic transplantation. *Leuk Lymphoma*. 2002;43:1391–4.
5. Anderlini P. Effects and safety of granulocyte colony-stimulating factor in healthy volunteers. *Curr Opin Hematol*. 2009;16:35–40.
6. Holig K, Kramer M, Kroschinsky F, Bornhauser M, Mengling T, Schmidt AH, et al. Safety and efficacy of hematopoietic stem cell collection from mobilized peripheral blood in unrelated volunteers: 12 years of single-center experience in 3928 donors. *Blood*. 2009;114:3757–63.
7. Mueller MM, Bialleck H, Bomke B, Brauning S, Varga C, Seidl C, et al. Safety and efficacy of healthy volunteer stem cell mobilization with filgrastim G-CSF and mobilized stem cell apheresis: results of a prospective longitudinal 5-year follow-up study. *Vox Sang*. 2013;104:46–54.
8. Pulsipher MA, Chitphakdithai P, Miller JP, Logan BR, King RJ, Rizzo JD, et al. Adverse events among 2408 unrelated donors of peripheral blood stem cells: results of a prospective trial from the National Marrow Donor Program. *Blood*. 2009;113:3604–11.
9. Winkler IG, Pettit AR, Raggatt LJ, Jacobsen RN, Forristal CE, Barbier V, et al. Hematopoietic stem cell mobilizing agents G-CSF, cyclophosphamide or AMD3100 have distinct mechanisms of action on bone marrow HSC niches and bone formation. *Leukemia*. 2012;26:1594–601.
10. Winkler IG, Bendall LJ, Forristal CE, Helwani F, Nowlan B, Barbier V, et al. B-lymphopoiesis is stopped by mobilizing doses of G-CSF and is rescued by overexpression of the anti-apoptotic protein Bcl2. *Haematologica*. 2013;98:325–33.
11. Brauning S, Thoraus K, Luxembourg B, Schulz M, Chow KU, Seifried E, et al. Deferrals of volunteer stem cell donors referred for evaluation for matched-unrelated stem cell donation. *Bone Marrow Transplant*. 2014;49:1419–25.
12. Anasetti C, Logan BR, Lee SJ, Waller EK, Weisdorf DJ, Wingard JR, et al. Peripheral-blood stem cells versus bone marrow from unrelated donors. *N Engl J Med*. 2012;367:1487–96.
13. Karpova D, Bonig H. Concise review: CXCR4/CXCL12 signaling in immature hematopoiesis—lessons from pharmacological and genetic models. *Stem Cells*. 2015;33:2391–9.
14. Rettig MP, Anstas G, DiPersio JF. Mobilization of hematopoietic stem and progenitor cells using inhibitors of CXCR4 and VLA-4. *Leukemia*. 2012;26(1):34–53.
15. Devine SM, Vij R, Rettig M, Todt L, McGlauchlen K, Fisher N, et al. Rapid mobilization of functional donor hematopoietic cells without G-CSF using AMD3100, an antagonist of the CXCR4/SDF-1 interaction. *Blood*. 2008;112:990–8.
16. Karpova D, Dauber K, Spohn G, Chudziak D, Wiercinska E, Schulz M, et al. The novel CXCR4 antagonist POL5551 mobilizes hematopoietic stem and progenitor cells with greater efficiency than Plerixafor. *Leukemia*. 2013;27:2322–31.
17. DeMarco SJ, Henze H, Lederer A, Moehle K, Mukherjee R, Romagnoli B, et al. Discovery of novel, highly potent and selective beta-hairpin mimetic CXCR4 inhibitors with excellent anti-HIV activity and pharmacokinetic profiles. *Bioorg Med Chem*. 2006;14:8396–404.
18. Dauber K, Becker D, Odendahl M, Seifried E, Bonig H, Tonn T. Enumeration of viable CD34(+) cells by flow cytometry in blood, bone marrow and cord blood: results of a study of the novel BD stem cell enumeration kit. *Cytotherapy*. 2011;13:449–58.
19. Broxmeyer HE, Orschell CM, Clapp DW, Hangoc G, Cooper S, Plett PA, et al. Rapid mobilization of murine and human hematopoietic stem and progenitor cells with AMD3100, a CXCR4 antagonist. *J Exp Med*. 2005;201:1307–18.
20. Cashen A, Rettig MP, Gao F, Abboud CN, Stockerl-Goldstein KE, Voj R, Uy GL, Westervelt P, DiPersio JF. Phase I Study of intravenous plerixafor added to a mobilization regimen of G-CSF in lymphoma patients undergoing autologous stem cell collection. *ASH Annual Meeting and Exposition*. 2010.

21. de Haas M, Kerst JM, van der Schoot CE, Calafat J, Hack CE, Nuijens JH, et al. Granulocyte colony-stimulating factor administration to healthy volunteers: analysis of the immediate activating effects on circulating neutrophils. *Blood*. 1994;84:3885–94.
22. Franzke A, Piao W, Lauber J, Gatzlaff P, Konecke C, Hansen W, et al. G-CSF as immune regulator in T cells expressing the G-CSF receptor: implications for transplantation and autoimmune diseases. *Blood*. 2003;102:734–9.
23. Abboud M, Laver J, Blau CA. Granulocytosis causing sickle-cell crisis. *Lancet*. 1998;351:959.
24. Fitzhugh CD, Hsieh MM, Bolan CD, Saenz C, Tisdale JF. Granulocyte colony-stimulating factor (G-CSF) administration in individuals with sickle cell disease: time for a moratorium? *Cytotherapy*. 2009;11:464–71.
25. Hequet O. Hematopoietic stem and progenitor cell harvesting: technical advances and clinical utility. *J Blood Med*. 2015;6:55–67.
26. Reinhardt P, Brauning S, Bialleck H, Thoraus K, Smith R, Schrezenmeier H, et al. Automatic interface-controlled apheresis collection of stem/progenitor cells: results from an autologous donor validation trial of a novel stem cell apheresis device. *Transfusion*. 2011;51:1321–30.
27. Kroger N, Renges H, Kruger W, Gutensohn K, Loliger C, Carrero I, et al. A randomized comparison of once versus twice daily recombinant human granulocyte colony-stimulating factor (filgrastim) for stem cell mobilization in healthy donors for allogeneic transplantation. *Br J Haematol*. 2000;111:761–5.
28. Kroger N, Sonnenberg S, Cortes-Dericks L, Freiberger P, Mollnau H, Zander AR. Kinetics of G-CSF and CD34 + cell mobilization after once or twice daily stimulation with rHu granulocyte-stimulating factor (lenograstim) in healthy volunteers: an intraindividual crossover study. *Transfusion*. 2004;44:104–10.
29. Kroger N, Zeller W, Hassan HT, Kruger W, Gutensohn K, Loliger C, et al. Stem cell mobilization with G-CSF alone in breast cancer patients: higher progenitor cell yield by delivering divided doses (2 × 5 microg/kg) compared to a single dose (1 × 10 microg/kg). *Bone Marrow Transplant*. 1999;23:125–9.
30. Lee V, Li CK, Shing MM, Chik KW, Li K, Tsang KS, et al. Single vs twice daily G-CSF dose for peripheral blood stem cells harvest in normal donors and children with non-malignant diseases. *Bone Marrow Transplant*. 2000;25:931–5.
31. Kohara H, Omatsu Y, Sugiyama T, Noda M, Fujii N, Nagasawa T. Development of plasmacytoid dendritic cells in bone marrow stromal cell niches requires CXCL12-CXCR4 chemokine signaling. *Blood*. 2007;110:4153–60.
32. Reizis B, Bunin A, Ghosh HS, Lewis KL, Sisirak V. Plasmacytoid dendritic cells: recent progress and open questions. *Annu Rev Immunol*. 2011;29:163–83.
33. Gilliet M, Liu YJ. Human plasmacytoid-derived dendritic cells and the induction of T-regulatory cells. *Hum Immunol*. 2002;63:1149–55.
34. Ito T, Yang M, Wang YH, Lande R, Gregorio J, Perng OA, et al. Plasmacytoid dendritic cells prime IL-10-producing T regulatory cells by inducible costimulator ligand. *J Exp Med*. 2007;204:105–15.
35. Mielcarek M, Storer B, Martin PJ, Forman SJ, Negrin RS, Flowers ME, et al. Long-term outcomes after transplantation of HLA-identical related G-CSF-mobilized peripheral blood mononuclear cells versus bone marrow. *Blood*. 2012;119:2675–8.
36. Bensinger WJ. Allogeneic transplantation: peripheral blood vs. bone marrow. *Curr Opin Oncol*. 2012;24:191–6.
37. Roberts AW, Foote S, Alexander WS, Scott C, Robb L, Metcalf D. Genetic influences determining progenitor cell mobilization and leukocytosis induced by granulocyte colony-stimulating factor. *Blood*. 1997;89:2736–44.
38. Ryan MA, Nattamai KJ, Xing E, Schleimer D, Daria D, Sengupta A, et al. Pharmacological inhibition of EGFR signaling enhances G-CSF-induced hematopoietic stem cell mobilization. *Nat Med*. 2010;16:1141–6.

Submit your next manuscript to BioMed Central and we will help you at every step:

- We accept pre-submission inquiries
- Our selector tool helps you to find the most relevant journal
- We provide round the clock customer support
- Convenient online submission
- Thorough peer review
- Inclusion in PubMed and all major indexing services
- Maximum visibility for your research

Submit your manuscript at
www.biomedcentral.com/submit

