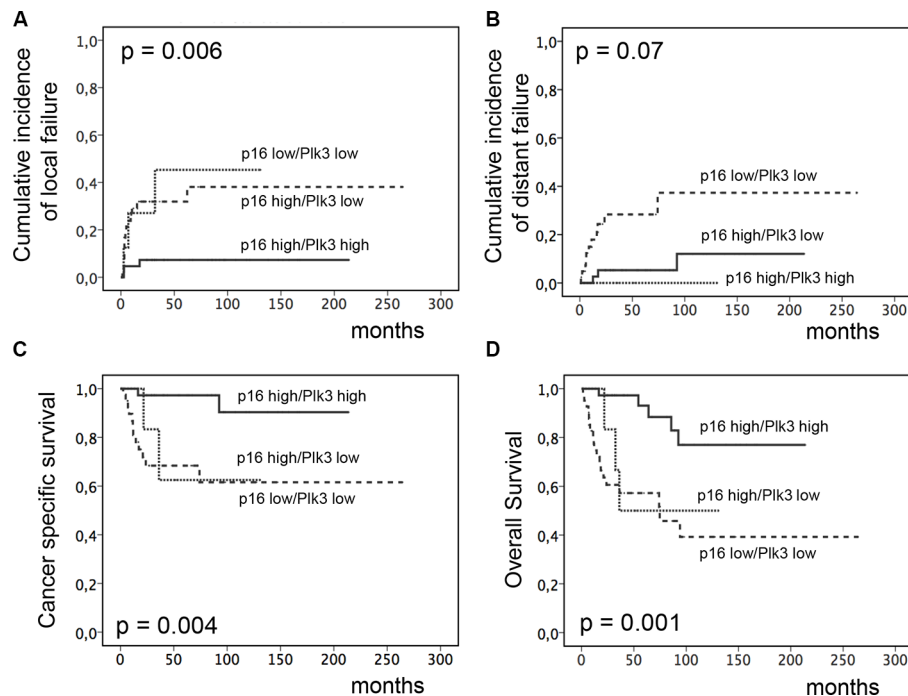
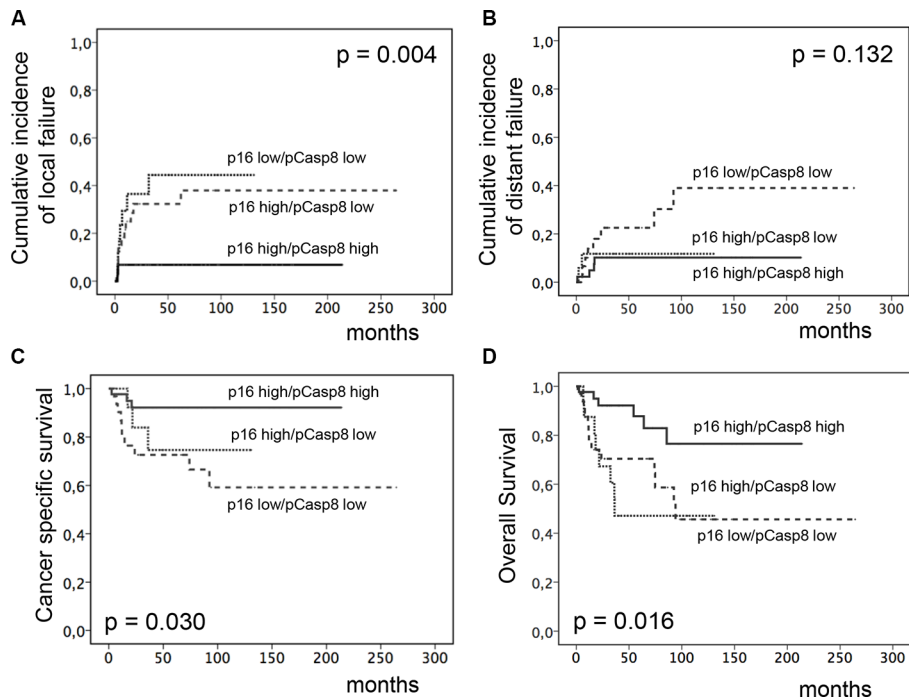


Polo-like kinase 3 and phosphoT273 caspase-8 are associated with improved local tumor control and survival in patients with anal carcinoma treated with concomitant chemoradiotherapy

Supplementary Materials



Supplementary Figure S1: Incidence of locoregional and distant failure, CSS and OS according to combined p16INK4a and Plk3 expression. Cumulative incidence of locoregional (A) and distant failure (B), CSS (C) and OS (D) according to combined p16^{INK4a} and Plk3 expression (high Plk3 and high p16^{INK4a} vs. high Plk3 and low vs. low Plk3 and low p16^{INK4a}) in pretreatment biopsies of patients with anal carcinoma treated with definitive CRT.



Supplementary Figure S2: Incidence of locoregional and distant failure, CSS and OS according to combined p16^{INK4a} and pT273 caspase-8 expression. Cumulative incidence of locoregional (A) and distant failure (B), CSS (C) and OS (D) according to combined p16^{INK4a} and pT273 caspase-8 levels (high pT273 caspase-8 and high p16^{INK4a} vs. high pT273 caspase-8 and low p16^{INK4a} vs. low pT273 caspase-8 and low p16^{INK4a}) in pretreatment biopsies of patients with anal carcinoma treated with definitive CRT.

Supplementary Table S1: Univariate and multivariate analyses of prognostic factors and combined HPV16 DNA load/p16^{INK4a} and Plk3 or HPV16 DNA load/p16^{INK4a} and pT273 Caspase 8 variable in patients with anal SCC

	Multivariate				
	Univariate <i>p</i> -value	HR	95 % CI		<i>p</i> -value
			lower	upper	
Cumulative incidence of local failure					
<i>N</i> -stage (N1-3/N0)	< 0.001	6.15	1.90	19.84	0.002
combined HPV16 load/Plk3 ^a	0.001	16.77	2.09	134.0	0.008
combined HPV16 load/pT273	0.009	11.18	0.72	171.66	0.083
combined p16 ^{INK4a} /Plk3	0.006	5.80	0.94	35.65	0.058
combined p16 ^{INK4a} /pT273	0.004	3.33	0.77	14.33	0.106
Cancer-specific survival					
<i>N</i> -stage (N 1-3/N 0)	< 0.001	6.72	2.03	22.26	0.002
combined HPV16 load/Plk3	0.016	10.21	1.18	55.36	0.007
combined HPV16 load/pT273	0.023	2.58	0.20	32.94	0.605
combined p16 ^{INK4a} /Plk3	0.004	7.22	1.53	34.00	0.012
combined p16 ^{INK4a} /pT273	0.030	2.19	0.62	7.68	0.221
Overall survival					
<i>N</i> -stage (N 1-3/N 0)	0.002	4.30	1.77	10.42	0.05
combined HPV16 load/Plk3	0.003	9.18	2.28	36.97	0.002
combined HPV16 load/pT273	0.003	3.44	0.58	20.28	0.171
combined p16 ^{INK4a} /Plk3	0.004	5.08	1.80	14.31	0.002
combined p16 ^{INK4a} /pT273	0.001	2.14	0.67	6.83	0.179