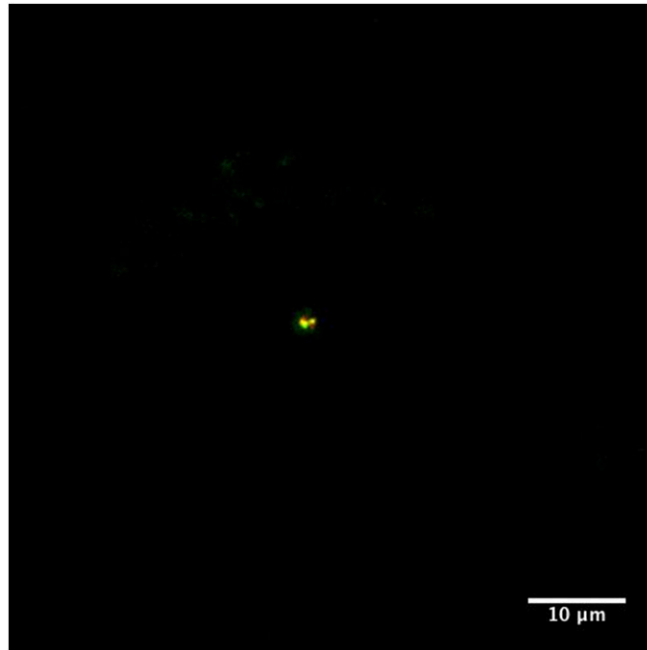


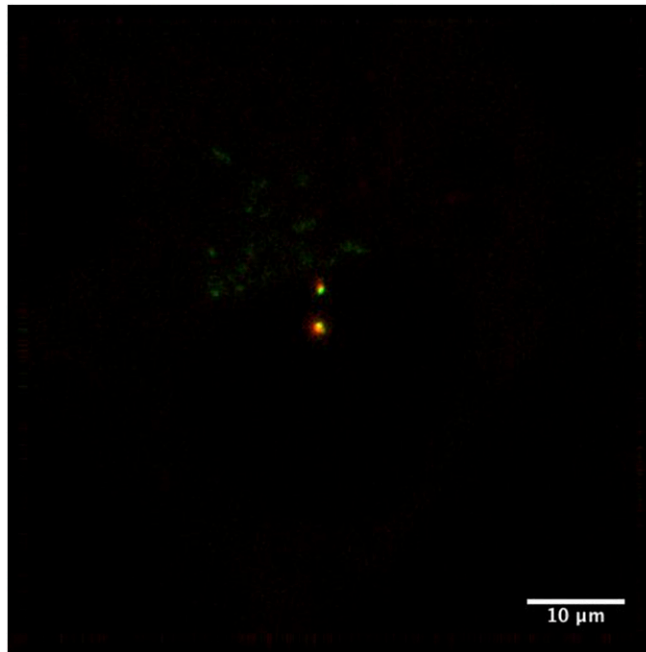
Supporting Information

Vlijm et al. 10.1073/pnas.1716840115



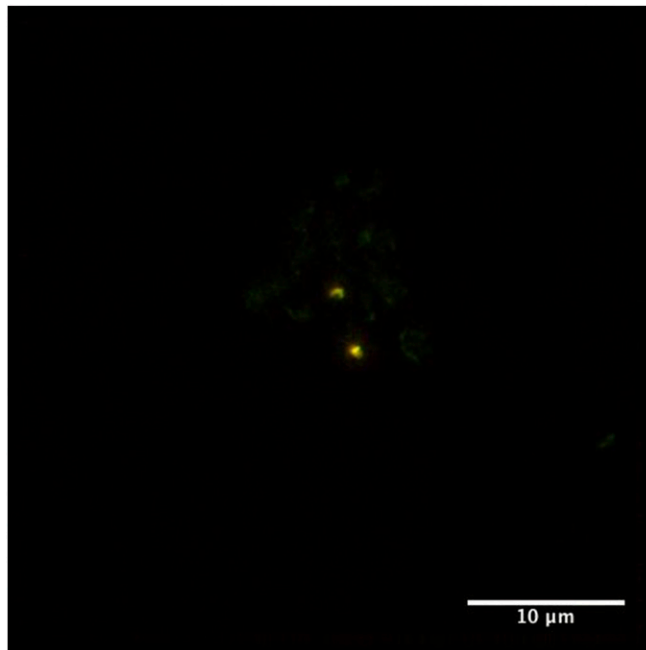
Movie S1. Centrosome movement in RPE1 cells. The two centrosomes of an interphase cell are kept together in a dynamic way (representative for ~95% of the cells). mNeonGreen-CEP68 is shown in green; mRuby2-PACT is shown in red and serves as centrosome marker.

[Movie S1](#)



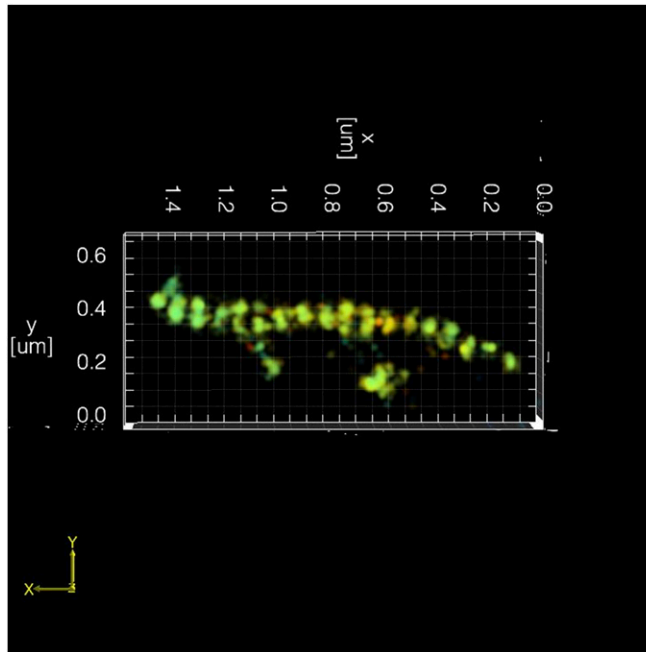
Movie S4. Centrosome movement in RPE1 cells. The separated centrosomes of a cell in interphase are joined and stay together thereafter (representative for ~5% of the cells). mNeonGreen-CEP68 is shown in green; mRuby2-PACT is shown in red and serves as centrosome marker.

[Movie S4](#)



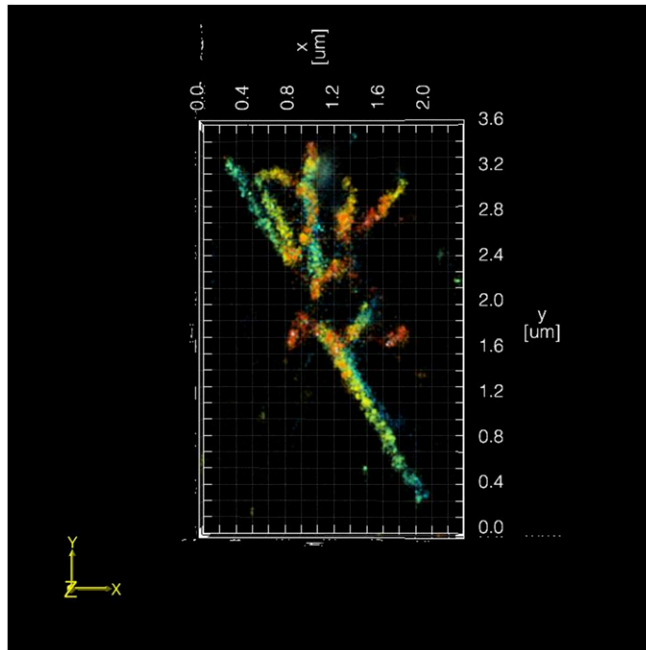
Movie S5. Centrosome movement in RPE1 cells, similar to Movie S4. The separated centrosomes of a cell in interphase are joined and stay together thereafter (representative for ~5% of the cells). mNeonGreen-CEP68 is in green; mRuby2-PACT is shown in red and serves as centrosome marker.

[Movie S5](#)



Movie S8. A 3D image of a single rootletin fiber imaged by 3D-STORM.

[Movie S8](#)



Movie S9. A 3D image of a CEP68 fiber network imaged by 3D-STORM.

[Movie S9](#)

Other Supporting Information Files

[SI Appendix \(PDF\)](#)
[Dataset S1 \(PDF\)](#)