

Use of anastrozole for breast cancer prevention (IBIS-II): long-term results of a randomised controlled trial



Jack Cuzick, Ivana Sestak, John F Forbes, Mitch Dowsett, Simon Cawthorn, Robert E Mansel, Sibylle Loibl, Bernardo Bonanni, D Gareth Evans, Anthony Howell, on behalf of the IBIS-II investigators*



Summary

Background Two large clinical trials have shown a reduced rate of breast cancer development in high-risk women in the initial 5 years of follow-up after use of aromatase inhibitors (MAP.3 and International Breast Cancer Intervention Study II [IBIS-II]). Here, we report blinded long-term follow-up results for the IBIS-II trial, which compared anastrozole with placebo, with the objective of determining the efficacy of anastrozole for preventing breast cancer (both invasive and ductal carcinoma in situ) in the post-treatment period.

Methods IBIS-II is an international, randomised, double-blind, placebo-controlled trial. Postmenopausal women at increased risk of developing breast cancer were recruited and were randomly assigned (1:1) to either anastrozole (1 mg per day, oral) or matching placebo daily for 5 years. After treatment completion, women were followed on a yearly basis to collect data on breast cancer incidence, death, other cancers, and major adverse events (cardiovascular events and fractures). The primary outcome was all breast cancer.

Findings 3864 women were recruited between Feb 2, 2003, and Jan 31, 2012. 1920 women were randomly assigned to 5 years anastrozole and 1944 to placebo. After a median follow-up of 131 months (IQR 105–156), a 49% reduction in breast cancer was observed for anastrozole (85 vs 165 cases, hazard ratio [HR] 0.51, 95% CI 0.39–0.66, $p < 0.0001$). The reduction was larger in the first 5 years (35 vs 89, 0.39, 0.27–0.58, $p < 0.0001$), but still significant after 5 years (50 vs 76 new cases, 0.64, 0.45–0.91, $p = 0.014$), and not significantly different from the first 5 years ($p = 0.087$). Invasive oestrogen receptor-positive breast cancer was reduced by 54% (HR 0.46, 95% CI 0.33–0.65, $p < 0.0001$), with a continued significant effect in the period after treatment. A 59% reduction in ductal carcinoma in situ was observed (0.41, 0.22–0.79, $p = 0.0081$), especially in participants known to be oestrogen receptor-positive (0.22, 0.78–0.65, $p < 0.0001$). No significant difference in deaths was observed overall (69 vs 70, HR 0.96, 95% CI 0.69–1.34, $p = 0.82$) or for breast cancer (two anastrozole vs three placebo). A significant decrease in non-breast cancers was observed for anastrozole (147 vs 200, odds ratio 0.72, 95% CI 0.57–0.91, $p = 0.0042$), owing primarily to non-melanoma skin cancer. No excess of fractures or cardiovascular disease was observed.

Interpretation This analysis has identified a significant continuing reduction in breast cancer with anastrozole in the post-treatment follow-up period, with no evidence of new late side-effects. Further follow-up is needed to assess the effect on breast cancer mortality.

Funding Cancer Research UK, the National Health and Medical Research Council Australia, Breast Cancer Research Foundation, Sanofi Aventis, and AstraZeneca.

Copyright © 2019 The Author(s). Published by Elsevier Ltd. This is an Open Access article under the CC BY 4.0 license.

Introduction

Early work on therapeutic prevention of breast cancer has focused on selective oestrogen receptor modulators (SERMs), such as tamoxifen and raloxifene, which show anti-oestrogenic effects on the breast, as well as agonistic or antagonistic effects on some other organs. In a meta-analysis of several SERMs,¹ a 38% reduction in all breast cancer was observed, driven by 50% reduction of oestrogen receptor-positive tumours, but no effect on oestrogen receptor-negative tumours. Long-term follow up of two of these trials has shown that the effects of tamoxifen continue with a constant 29% annual preventive effect for at least 15 years after completion of treatment.^{2,3}

A greater short-term reduction in breast cancer incidence was seen in two trials using the aromatase inhibitors, anastrozole⁴ and exemestane.⁵ The MAP.3 trial³ compared exemestane with placebo in postmenopausal women at high risk of developing breast cancer and found a significant reduction in the incidence of all breast cancer by 53% and a 65% reduction in invasive breast cancer after a median follow-up of 35 months. However, all women were unblinded after the initial publication, so it was not possible to study a post-treatment effect, as has been seen with tamoxifen.²

The International Breast Cancer Intervention Study II (IBIS-II) was initiated in 2003 and recruited postmenopausal women without breast cancer but at high

Lancet 2020; 395: 117–22

Published Online
December 12, 2019
[https://doi.org/10.1016/S0140-6736\(19\)32955-1](https://doi.org/10.1016/S0140-6736(19)32955-1)

This online publication has been corrected. The corrected version first appeared at thelancet.com on February 13, 2020

See [Comment](#) page 91

*A list of collaborators is provided in the appendix

Centre for Cancer Prevention, Wolfson Institute of Preventive Medicine, Queen Mary University London, London, UK (Prof J Cuzick PhD, I Sestak PhD); Australia New Zealand Breast Cancer Trials Group Newcastle, University of Newcastle, Calvary Mater Hospital, Waratah, NSW, Australia (Prof J F Forbes MD); Ralph Lauren Centre for Breast Cancer Research, Royal Marsden, London, UK (Prof M Dowsett PhD); Breast Care Centre, Southmead Hospital, Bristol, UK (S Cawthorn MD); University Department of Surgery, University of Wales College of Medicine, Cardiff, UK (R E Mansel MD); German Breast Group, Frankfurt, Germany (Prof S Loibl MD); Division of Chemoprevention and Genetics, European Institute of Oncology, Milan, Italy (B Bonanni MD); and Prevent Breast Cancer Unit, Nightingale Breast Screening Centre, Manchester University NHS Foundation Trust, Manchester, UK (Prof G Evans MD, Prof A Howell MD)

Correspondence to: Prof Jack Cuzick, Centre for Cancer Prevention, Wolfson Institute of Preventive Medicine, Queen Mary University London, London EC1M 6BQ, UK
j.cuzick@qmul.ac.uk

See Online for appendix

Research in context

Evidence before this study

At the time of the initial publication of this trial, we searched PubMed for reports published in English between Jan 1, 1980, and May 30, 2013. We used the search terms “breast cancer”, “prevention”, and “aromatase inhibitor”. Only one other prevention trial using an aromatase inhibitor had been reported and it has been discussed. However, we identified several adjuvant trials using aromatase inhibitors in which contralateral tumours were reported. We also identified an overview of selective oestrogen receptor modulators for breast cancer prevention. Two large trials in which aromatase inhibitors are being assessed for prevention of ductal carcinoma were also identified. For this Article, we repeated the search up to Oct 30, 2019. A US Preventive Services Task Force review was found, but no new studies on breast cancer prevention with aromatase inhibitors were identified.

Added value of this study

We report results of the randomised IBIS-II trial on the extended duration of benefit of anastrozole in preventing

breast cancer up to 12 years after entry and indicate for the first time a long-term benefit, which is larger than that seen for tamoxifen in this period. No excess of fractures, other cancers, cardiovascular disease, or death from any specific cause was seen in the extended follow-up. The number needed to treat to prevent one breast cancer has been reduced to 29.

Implications of all the available evidence

Our results provide additional support for the use of anastrozole as the treatment of choice for breast cancer risk reduction in most postmenopausal women at high risk of developing breast cancer. Its use has been supported by the National Institute for Health and Care Excellence in the UK and the US Preventive Services Task Force. Identification of women at high risk of early symptoms of oestrogen depletion and their management remains a challenge.

risk of developing it to receive either anastrozole (1 mg daily) or matching placebo. The first analysis after a median follow-up of 60 months (IQR 36–85) reported a significant reduction in incidence of 53% for all breast cancer (including ductal carcinoma in situ).⁴ A 58% reduction in incidence of invasive oestrogen receptor-positive breast cancer and a 70% reduction in incidence of ductal carcinoma in situ was observed for anastrozole. As reported in adjuvant trials,^{6,7} the main adverse events with anastrozole were fractures, joint-related effects, and menopausal symptoms, which are associated with an almost complete elimination of oestrogen in postmenopausal women using aromatase inhibitors.

A long-term term reduction of breast cancer incidence for anastrozole or any aromatase inhibitor has not been established, as it has for tamoxifen.^{2,3} Such a result is likely to substantially improve the benefit-risk ratio, as side-effects are uncommon after treatment cessation. The objective of this study was to determine the long-term efficacy of anastrozole for preventing breast cancer (both invasive and ductal carcinoma in situ) in the post-treatment period.

Methods

Study design and participants

IBIS-II is an international, randomised, double-blind, placebo-controlled trial. Detailed study design and inclusion and exclusion criteria have previously been reported.⁴ In brief, high-risk postmenopausal women aged 40–70 years were recruited between Feb 2, 2003, and Jan 31, 2012, in 153 breast cancer treatment centres across 18 countries (appendix p 3). Specific risk criteria for entry were broad and have previously been reported.⁴ They

were designed to include women aged 45–60 years who had a relative risk of breast cancer that was at least twice as high as that in the general population, those aged 60–70 years who had a risk that was at least 1.5 times higher, and those aged 40–44 years who had a risk that was at least four times higher. The exclusion criteria were being premenopausal, previous breast cancer including ductal carcinoma in situ diagnosed more than 6 months before trial entry, current or previous tamoxifen, raloxifene, or other SERM use for more than 6 months, or participation in IBIS-I, unless off-trial therapy for at least 5 years, intention to continue using oestrogen-based hormone replacement therapy, or previous or planned prophylactic mastectomy.

The trial was approved by the UK North West Multi-Centre Research Ethics Committee and was done in accordance with the Declaration of Helsinki (1996 revision), under the principles of good clinical practice. All participants provided written, informed consent to join the study, provide baseline and follow-up blood samples, and have their past and future health records examined, including access to mammograms and pathology material.

Randomisation and masking

Consenting eligible women were randomly assigned (1:1) to either anastrozole (1 mg per day, oral) or matching placebo daily for 5 years. Randomisation was stratified by country. All participants and medical personnel were blinded to treatment allocation, which was only held by the central study statistician. Unblinding was only permitted if the participant developed breast cancer, when a clinician considered there to be valid medical or

safety reasons, or the participant requested unblinding. Treatment allocation still remains largely blinded for investigators and participating women who have not developed breast or any other cancer (81·3% anastrozole vs 76·7% placebo, $p=0\cdot0053$). A further analysis was planned to take place around 5 years after the last report,⁴ and this analysis is provided 6 years after that report. The decision to analyse the data was made without looking at the results beforehand.

Procedures

After treatment completion, women were followed on a yearly basis to collect data on breast cancer incidence, death, other cancers, and major adverse events (cardiovascular events, fractures). In the UK, these events were also collected through cancer registries and National Health Services (NHS Digital). In non-UK centres, annual questionnaire or annual clinic visits were used to collect these data.

Outcomes

The primary outcome was the development of histologically confirmed breast cancer—either invasive or non-invasive (ductal carcinoma in situ). Secondary outcomes were oestrogen receptor-positive breast cancer, breast cancer mortality, other cancers, cardiovascular disease, fractures, and all-cause mortality. Exploratory analyses reported treatment effects by more detailed breast cancer type, specific baseline patient characteristics (age, body-mass index [BMI], previous use of hormone replacement therapy, and previous lobular carcinoma in situ or atypical hyperplasia), and other major cancers by site.

Statistical analysis

All analyses were done on an intention-to-treat basis, including all randomly assigned patients. Analyses of the efficacy endpoints were based on hazard ratios (HRs) using Cox proportional hazard models,^{8,9} with corresponding 95% CIs, and survival curves were estimated using the Kaplan-Meier method.¹⁰ Only major adverse effects (other cancers, cardiovascular events, fractures, and deaths) were routinely collected after 5 years in all patients. Side-effects and secondary outcomes were compared between treatment groups using odds ratios (ORs) and Fisher exact significance tests. All p values were two-sided. All analyses were done using STATA version 15.1. This trial is registered as an International Standard Randomised Controlled Trial, number ISRCTN31488319.

Role of the funding source

The funder of the study had no role in study design, data collection, data analysis, data interpretation, or writing of the report. The corresponding author had full access to all the data in the study and had final responsibility for the decision to submit for publication.

	Number of events, anastrozole vs placebo	Hazard ratio (95% CI)	p value	$P_{\text{heterogeneity}}^*$
Overall	85 vs 165	0·51 (0·39–0·66)	<0·0001	..
0–5 years	35 vs 89	0·39 (0·27–0·58)	<0·0001	0·087
>5 years	50 vs 76	0·64 (0·45–0·91)	0·014	..
Invasive oestrogen receptor-positive	48 vs 103	0·46 (0·33–0·65)	<0·0001	..
0–5 years	20 vs 51	0·39 (0·23–0·66)	<0·0001	0·43
>5 years	28 vs 52	0·52 (0·33–0·83)	0·0062	..
All ductal carcinoma in situ	13 vs 31	0·41 (0·22–0·79)	0·0081	..
0–5 years	5 vs 17	0·29 (0·11–0·80)	0·016	0·43
>5 years	8 vs 14	0·56 (0·23–1·32)	0·18	..

*0–5 years vs >5 years.

Table 1: Number of breast cancer events and hazard ratios

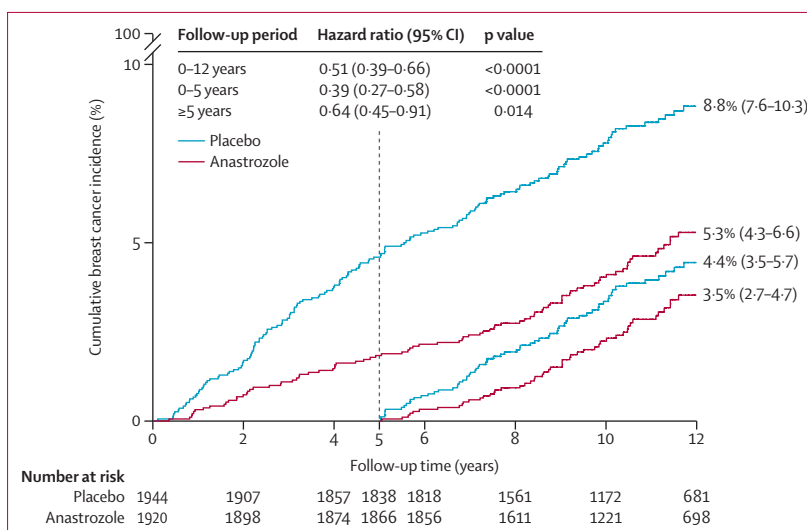


Figure 1: Cumulative incidence for all breast cancer by treatment allocation and follow-up period

Results

All women randomly assigned to treatment (N=3864, 1920 anastrozole and 1944 placebo) have been included in this analysis. 3704 (95·9%) were still at risk of developing breast cancer after the 5-year treatment period (1866 anastrozole, 1838 placebo) and follow-up is ongoing (appendix p 3). Median follow-up for this analysis was 131 months (IQR 106–156), and 41295 women-years of follow-up have been accrued (anastrozole 20803, placebo 20491), of which 22367 women-years were accrued after 5 years of follow-up (anastrozole 11339, placebo 11028). Median age at study entry was 59·4 years (IQR 55·0–63·4), 1893 women (47·0%) had used hormone replacement therapy before entering the trial, and 2631 (68·1%) had a BMI of more than 25kg/m². Other baseline demographics are shown in the appendix (p 1).

250 breast cancers have been reported (85 anastrozole [4·4%] vs 165 placebo [8·5%]; table 1), with a highly significant 49% reduction for all breast cancer with

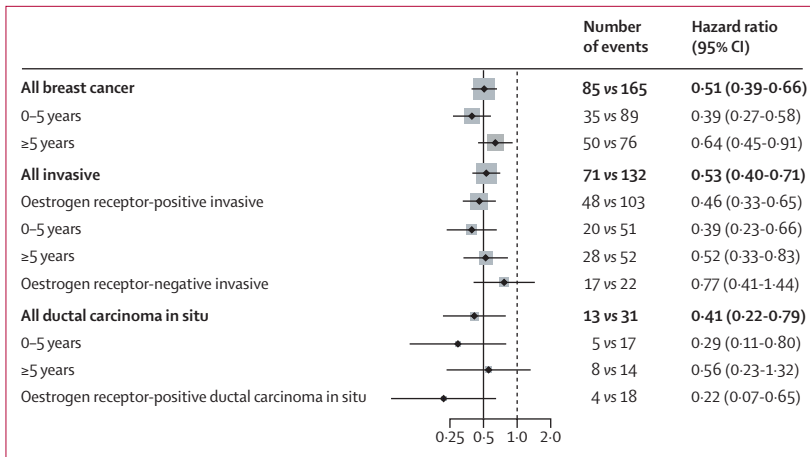


Figure 2: Hazard ratios for subgroup analyses by follow-up period
Grey squares indicate the amount of information available for this comparison, largely based on the number of events.

	Anastrozole N=1920, n (%)	Placebo, N=1944, n (%)	Odds ratio (95% CI)
Total	147 (7.1%)	200 (9.8%)	0.72 (0.57-0.91)
Skin	52 (2.7%)	85 (4.4%)	0.61 (0.42-0.88)
Non-melanoma	43 (2.2%)	73 (3.8%)	0.59 (0.39-0.87)
Melanoma	9 (0.5%)	12 (0.6%)	0.76 (0.28-1.97)
Gynaecological	14 (0.7%)	20 (1.0%)	0.71 (0.33-1.47)
Endometrial	5 (0.3%)	7 (0.4%)	0.72 (0.18-2.65)
Ovarian	7 (0.4%)	10 (0.5%)	0.71 (0.23-2.06)
Respiratory	13 (0.7%)	13 (0.7%)	1.01 (0.43-2.38)
Lung	11 (0.6%)	12 (0.6%)	0.93 (0.37-2.30)
Gastrointestinal	24 (1.3%)	33 (1.7%)	0.81 (0.45-1.43)
Colorectal	11 (0.6%)	16 (0.8%)	0.69 (0.29-1.60)

Table 2: Cancers other than breast

	Anastrozole, N=1920, all years (>5 years)	Placebo, N=1944, all years (>5 years)	Odds ratio (95% CI), all years
Fractures	380 (182)	373 (186)	1.04 (0.88-1.22)
Myocardial infarction	16 (8)	14 (8)	..
Deep vein thrombosis*	13 (6)	17 (5)	..
Pulmonary embolism	17 (11)	12 (7)	..
Transient ischaemic attack†	24 (14)	20 (9)	..
Stroke	23 (15)	17 (9)	..

*In the absence of pulmonary embolism. †In the absence of stroke. Numbers in parentheses refer to events occurring in the post-treatment period (>5 year follow-up).

Table 3: Major adverse events

anastrozole (HR 0.51, 95% CI 0.39-0.66, $p < 0.0001$). The reduction in incidence in the first 5 years of follow-up was 61% (0.39, 0.27-0.58, $p < 0.0001$), and a smaller but still significant 37% reduction (0.64, 0.45-0.91, $p = 0.014$) was seen in subsequent years, which was still larger than that seen for tamoxifen in previous trials. The effects in the two periods were not significantly different ($p = 0.087$) and a Hosmer-Lemeshow test for

non-proportional hazards was not significant ($p = 0.073$). After 12 years of follow-up, the estimated risk of developing breast cancer was 8.8% (IQR 7.6-10.3) in the placebo group compared with 5.3% (4.3-6.6) in the anastrozole group (figure 1), and the number needed to treat for 5 years to prevent one breast cancer was 29.

Overall 203 (81.2%) of the breast cancers were invasive, and 151 (74.4%) of these were reported as oestrogen receptor-positive. A 54% reduction in incidence with anastrozole was observed for oestrogen receptor-positive cancers (HR 0.46, 95% CI 0.33-0.65, $p < 0.0001$), with a larger 61% reduction in the first 5 years (0.39, 0.23-0.66, $p < 0.0001$; figure 2), followed by a 48% reduction (0.52, 0.33-0.83, $p = 0.0062$). A small, non-significant reduction in incidence was observed for invasive oestrogen receptor-negative breast cancer in the anastrozole group (0.77, 0.41-1.44, $p = 0.41$; figure 2). A significant reduction in incidence for anastrozole was also found for ductal carcinoma in situ (0.41, 0.22-0.79, $p = 0.0081$), in particular for lesions known to be oestrogen-positive (0.22, 0.07-0.65, $p = 0.0062$; figure 2).

No clear heterogeneity or trend was observed for differences in the preventive effect of anastrozole by other tumour characteristics (appendix p 2). Anastrozole reduced incidence of invasive HER2-negative cancers by 43% (HR 0.57, 95% CI 0.41-0.78), which was similar to that for invasive HER2-positive cancers (0.52, 0.23-1.17; appendix p 2).

Exploratory analyses of baseline characteristics did not show any significant heterogeneity by age, BMI, previous hormone replacement therapy use, or previous lobular carcinoma in situ or atypical hyperplasia (appendix p 2). Reductions in incidence did not differ between treatment groups for women with a BMI of more than 30 kg/m² and or who took hormone replacement therapy before trial entry.

Overall, a 28% reduction in cancer incidence at non-breast sites occurred (147 vs 200 cases, OR 0.72, 95% CI 0.57-0.91, $p = 0.0042$; table 2). Secondary analyses showed that this reduction was driven largely by a reduction in the incidence of non-melanoma skin cancer (43 vs 73 cases, 0.59, 0.39-0.87, $p = 0.0058$), and no effect on other specific cancers was apparent (table 2). In particular, no reduction in the incidence of endometrial cancer occurred due to oestrogen deprivation from anastrozole, although oestrogen is thought to be a major driver of this cancer.¹¹ Additionally, the early reduction seen for colorectal cancers⁴ has not been extended with longer follow-up.

No effect was seen on any other major adverse event (table 3). In particular, there was no excess of fractures overall (380 vs 373, OR 1.04, 95% CI 0.88-1.22). A small non-significant increase in number of events during the active treatment period (198 vs 186, 1.09, 0.87-1.35) was counterbalanced by slight reduction of events after treatment was completed (182 vs 187, 0.98, 0.79-1.23). Myocardial infarctions were evenly distributed between

treatment groups (table 3), and no differences in number of events were observed in the first 5 years (eight vs eight) or in follow-up after treatment (eight vs six). Numbers of deep vein thromboses were slightly increased in the placebo group, with no differences observed in the two periods (table 3). Cases of pulmonary embolism were non-significantly more frequent with anastrozole but no differences were observed during treatment compared with after treatment (table 3). Transient ischaemic attacks and strokes were non-significantly more common with anastrozole compared with placebo (46 vs 36, $p=0.24$).

Other less serious side-effects observed in the first 5 years during treatment with anastrozole,⁴ including arthralgia, joint stiffness, hot flushes, night sweats, vulvovaginal dryness, hypertension, and dry eyes, were not collected after the 5-year treatment period. However, even within the treatment period they were most common in the first year of treatment, so it is unlikely that there will be material differences in the post-treatment period. All participants have now completed treatment and full 5-year adherence was 74.6% for anastrozole compared with 77.0% for placebo (HR 0.89, 95% CI 0.79–1.01, $p=0.081$; appendix p 4), indicating that side-effects of anastrozole had little effect on treatment adherence.

139 (3.6%) women died during the study (69 anastrozole vs 70 placebo; table 4), with no difference between the two treatment groups (HR 0.96, 95% CI 0.69–1.34, $p=0.82$). Overall, no effect of anastrozole was seen for breast cancer-specific mortality (three anastrozole vs two placebo), but numbers are very small. Given the small number of deaths and the relatively young median age at entry (59.4 years), substantially longer follow-up will be needed to determine whether anastrozole affects breast cancer and other cause mortality. Deaths from cancers other than breast did not differ between treatment groups ($p=0.39$).

Discussion

This updated analysis of the IBIS-II trial provides additional support for the use of anastrozole in breast cancer prevention for high-risk postmenopausal women. The large 61% reduction in breast cancer incidence in the first 5 years has been maintained in subsequent follow-up to 12 years. The significant 36% reduction during post-treatment follow-up was not significantly smaller than during treatment, and still greater than that observed for tamoxifen, which has produced a roughly constant 29% reduction for 20 years.² The number needed to treat to prevent one breast cancer during the first 12 years of follow-up was 29, which compares favourably with the 58 needed for tamoxifen at that time.² Very few deaths from breast cancer have occurred to date, but it is too early to expect an effect on this outcome, which is a limitation of this analysis. The reduction with anastrozole was primarily seen in oestrogen receptor-positive cancers, which suggests that the effect on mortality will be smaller than that for incidence. The effects were greatest for

	Anastrozole, N=1920, n (%)	Placebo, N=1944, n (%)	Hazard ratio (95% CI)
All	69 (3.6%)	70 (3.6%)	0.96 (0.69–1.34)
Breast cancer	2 (0.1%)	3 (0.2%)	0.64 (0.11–3.88)
Other cancer	27 (1.4%)	34 (1.8%)	0.77 (0.47–1.28)
Cardiovascular	13 (0.7%)	9 (0.5%)	1.41 (0.60–3.31)
Other or unknown	27 (1.4%)	24 (1.2%)	1.10 (0.63–1.91)

Table 4: Specific causes of death

oestrogen receptor-positive tumours, but an unexpected and non-significant 27% reduction was also seen for receptor-negative cancers, which will need further follow-up to validate.

The previously observed⁴ reduction of other cancers with anastrozole, notably non-melanoma skin cancer, has continued with longer follow up. No other side-effects have been identified with longer follow-up, and the small 11% excess of fractures during the active treatment period has not continued after 5 years of follow-up. A limitation of this analysis is that routine collection of less serious side-effects was not done after the 5-year treatment period.

All women have completed the active follow-up period of the trial and now are followed for long-term outcomes by various methods. In the UK, long-term data are collected through national registries for deaths, cancers, and major predefined adverse events, so we are confident that data are complete. Additionally, we still collect data through annual questionnaires where appropriate. For international centres, annual questionnaires were used to collect information on all primary and secondary outcomes. However, data on lesser side-effects, such as hot flushes and musculoskeletal events, were only collected during the 5-year treatment period.

In conclusion, these updated results show a continuing long-term effect of 5 years of anastrozole treatment in preventing breast cancer in high-risk postmenopausal women. No new major adverse events were identified. Overall, our data substantially strengthen the findings from our initial report after 5 years of follow-up.⁴ In the UK, the National Institute for Health and Care Excellence has now recommended the use of anastrozole for breast cancer prevention in high-risk postmenopausal women,¹² and in the USA, the US Preventive Services Task Force has also supported its use.¹³ The benefits of anastrozole, in terms of the reduction in risk of breast cancer in high-risk postmenopausal women, extend beyond the 5-year treatment period.

Contributors

JC, JFF, MD, SC, REM, SL, BB, and AH designed the study. JC, JFF, SC, REM, SL, BB, DGE, and AH collected data. IS and JC analysed the data and wrote the report. All authors interpreted the data.

Declaration of interests

JC reports grants from AstraZeneca, during the conduct of the study, and personal fees and royalties through Queen Mary University of London from Myriad Genetics, outside the submitted work. IS reports

personal fees from Myriad Genetics, Nanostring Technologies, and Pfizer, outside the submitted work. MD reports personal fees personal fees and royalties through the Institute for Cancer Research for development of abiraterone from Radius, AbbVie, G1 Technologies Orion, and H3 Biomedicine, personal fees from Myriad Genetics, and Nanostring Technologies, and grants from Pfizer and Radius, all outside the submitted work. SL reports personal fees from AstraZeneca, Celgene, and Puma Samsung, grants and personal fees from Pfizer, Novartis, and Roche, and grants from Cepheid and Amgen, all outside the submitted work. DGE reports personal fees from AstraZeneca. All other authors declare no competing interests.

Data sharing

Data will be available according to IBIS-II's data sharing plan. Requests for specific analyses or data can be submitted by email to j.cuzick@qmul.ac.uk. Details for data sharing policy and application process can be found on the website of Queen Mary University London.

Acknowledgments

This study was funded by Cancer Research UK (C569/A5032), the National Health and Medical Research Council Australia (GNT300755, GNT569213), the Breast Cancer Research Foundation (EMSR1C3R), Manchester National Institute for Health Research Biomedical Research Centre (IS-BRC-1215-20007), Sanofi Aventis, and AstraZeneca. AstraZeneca provided anastrozole and matching placebo. The study sponsor was Queen Mary University of London. The Cancer Research UK Cancer Prevention Trials Unit (C8162/A16893 and C8162/A25356) under the direction of Peter Sasiemi managed the data and the long-term follow-up. Special thanks to Benoit Aigret and Michelle Sleeth for project management.

References

- Cuzick J, Sestak I, Bonanni B, et al. Selective oestrogen receptor modulators in prevention of breast cancer: an updated meta-analysis of individual participant data. *Lancet* 2013; **381**: 1827–34.
- Cuzick J, Sestak I, Forbes JF, et al. Anastrozole for prevention of breast cancer in high-risk postmenopausal women (IBIS-II): an international, double-blind, randomised placebo-controlled trial. *Lancet* 2014; **383**: 1041–48.
- Goss PE, Ingle JN, Ales-Martinez JE, et al. Exemestane for breast-cancer prevention in postmenopausal women. *N Engl J Med* 2011; **364**: 2381–91.
- Cuzick J, Sestak I, Cawthorn S, et al. Tamoxifen for prevention of breast cancer: extended long-term follow-up of the IBIS-I breast cancer prevention trial. *Lancet Oncol* 2015; **16**: 67–75.
- Cuzick J, Sestak I, Baum M, et al. Effect of anastrozole and tamoxifen as adjuvant treatment for early-stage breast cancer: 10-year analysis of the ATAC trial. *Lancet Oncol* 2010; **11**: 1135–41.
- Coates AS, Keshaviah A, Thurlimann B, et al. Five years of letrozole compared with tamoxifen as initial adjuvant therapy for postmenopausal women with endocrine-responsive early breast cancer: update of study BIG 1–98. *J Clin Oncol* 2007; **25**: 486–92.
- Powles TJ, Ashley S, Tidy A, Smith IE, Dowsett M. Twenty-year follow-up of the Royal Marsden randomized, double-blinded tamoxifen breast cancer prevention trial. *J Natl Cancer Inst* 2007; **99**: 283–90.
- Cox D. Analysis of survival data. New York: Chapman & Hall, 1984.
- Cox DR. Regression models and life tables. *J R Stat Soc* 1972; **34**: 187–220.
- Kaplan EL, Meier P. Nonparametric estimation from incomplete observations. *J Am Stat Assoc* 1958; **53**: 457–81.
- Cook LS, Weiss NS, Doherty JA. Endometrial cancer In: Thun MJ, Linet MS, Cerhan JR, Haiman C, Schottenfeld D, eds. Cancer epidemiology and prevention, 4th edn. Oxford: Oxford University Press, 2017: 909–24.
- NICE. Familial breast cancer: classification, care and managing breast cancer and related risks in people with a family history of breast cancer. National Institute for Health and Care Excellence, 2013. <https://www.nice.org.uk/guidance/cg164/resources/familial-breast-cancer-classification-care-and-managing-breast-cancer-and-related-risks-in-people-with-a-family-history-of-breast-cancer-pdf-35109691767493> (accessed Nov 29, 2019).
- Nelson HD, Fu R, Zakher B, Pappas M, McDonagh M. Medication use for the risk reduction of primary breast cancer in women: updated evidence report and systematic review for the US Preventive Services Task Force. *JAMA* 2019; **322**: 868–86.

For Queen Mary University London's data sharing policy see www.qmul.ac.uk/wolfson/centres/ccp/data-sharing