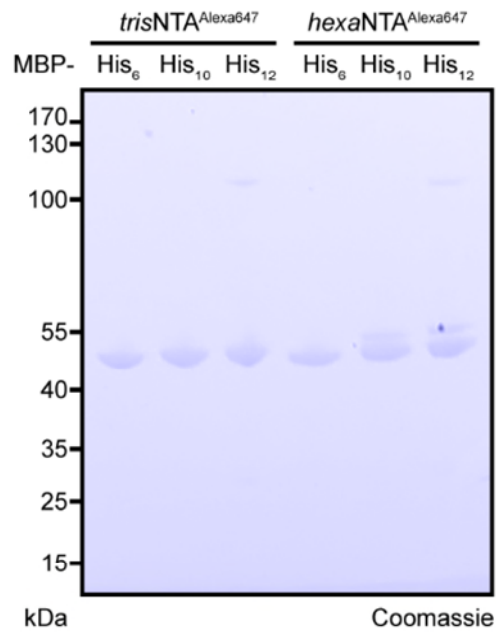
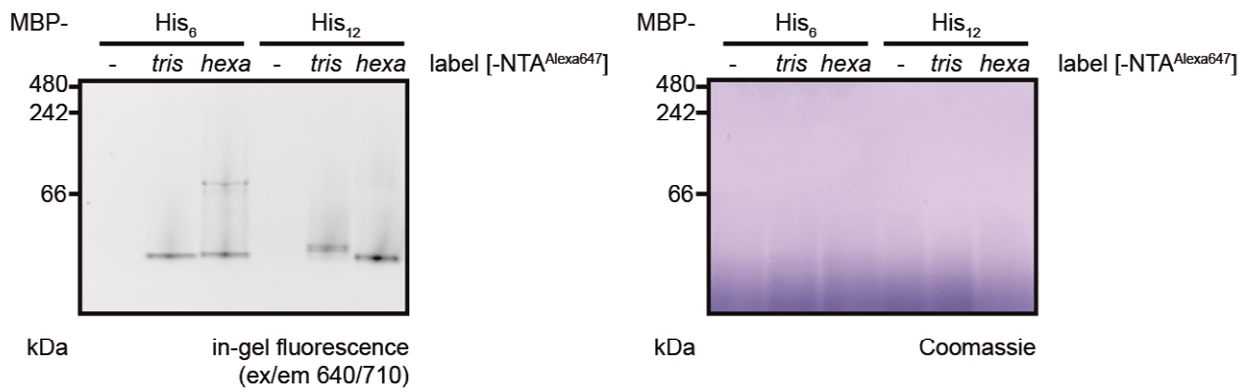


Supplemental Information



Supplementary Figure 1 | Characterization of fluorescent chelator probes for SDS-PAGE protein detection. Coomassie staining of non-reducing SDS-PAGE analysis of various sized histidine tags (His_n) on 2 µg MBP (45 pmol) incubated with 450 nM (7 pmol) of *trisNTA*^{Alexa647} or *hexaNTA*^{Alexa647}. A slight upshift of the reference proteins MBP-His_{10,12} is visible and confirming the labeling by *hexaNTA*^{Alexa647} (Fig. 3a).



Supplementary Figure 2 | Characterization of fluorescent chelator probes for blue native PAGE protein detection. In-gel fluorescence and Coomassie staining of His₆- and His₁₂-tagged MBP (2 µg, 45 pmol) incubated with 450 nM (7 pmol) of *tris*NTA^{Alexa647} or *hexa*NTA^{Alexa647}.