



Research article

[urn:lsid:zoobank.org:pub:60992A95-1F59-4407-9774-B8FC1545A8B4](https://zoobank.org/pub:60992A95-1F59-4407-9774-B8FC1545A8B4)

**A revision of dragon millipedes II: the new genus *Nagaxytes* gen. nov.,
with the description of three new species
(Diplopoda, Polydesmida, Paradoxosomatidae)**

Ruttapon SRISONCHAI¹, Henrik ENGHOFF^{2,*},
Natdanai LIKHITRAKARN^{3,4} & Somsak PANHA^{4,*}

¹ Biological Sciences Program, Faculty of Science, Chulalongkorn University,
Phaya Thai Road, Patumwan, Bangkok 10330, Thailand.

² Natural History Museum of Denmark, University of Copenhagen, Universitetsparken 15,
DK-2100 København Ø, Denmark.

³ Division of Plant Protection, Faculty of Agricultural Production, Maejo University,
San Sai, Chiang Mai 50290, Thailand.

⁴ Animal Systematics Research Unit, Department of Biology, Faculty of Science, Chulalongkorn
University, Phayathai Road, Patumwan, Bangkok 10330, Thailand.

* Corresponding authors: Somsak Panha (somsak.pan@chula.ac.th) and Henrik Enghoff
(henghoff@snm.ku.dk)

¹ Email: ruttapon60104@yahoo.com

³ Email: kongerrrr@hotmail.com

¹ [urn:lsid:zoobank.org:author:4C9CB546-0A3E-4F0B-A9AB-618A6E9C2D6B](https://zoobank.org/author:4C9CB546-0A3E-4F0B-A9AB-618A6E9C2D6B)

² [urn:lsid:zoobank.org:author:FB09A817-000D-43C3-BCC4-2BC1E5373635](https://zoobank.org/author:FB09A817-000D-43C3-BCC4-2BC1E5373635)

³ [urn:lsid:zoobank.org:author:46C52EE1-A383-4C86-BF97-39E07C195075](https://zoobank.org/author:46C52EE1-A383-4C86-BF97-39E07C195075)

⁴ [urn:lsid:zoobank.org:author:AC935098-D901-4F35-A414-4B0D4FE44E79](https://zoobank.org/author:AC935098-D901-4F35-A414-4B0D4FE44E79)

Abstract. The ‘*acantherpastes*’ group of dragon millipedes, formerly placed in the genus *Desmoxytes* Chamberlin, 1923, is revised and assigned to the new genus *Nagaxytes* Srisonchai, Enghoff & Panha gen. nov. *Desmoxytes acantherpastes* Golovatch & Enghoff, 1994 is the type species of the new genus and is redescribed as *N. acantherpastes* (Golovatch & Enghoff, 1994) gen. et comb. nov. Three new species are described from Thailand: *N. erecta* Srisonchai, Enghoff & Panha gen. et sp. nov. and *N. gracilis* Srisonchai, Enghoff & Panha gen. et sp. nov. from Kanchanaburi Province, and *N. spatula* Srisonchai, Enghoff & Panha gen. et sp. nov. from Tak Province. All new species are endemic to western Thailand and all are restricted to limestone habitats. Complete illustrations of external morphological characters, an identification key, and a distribution map are provided.

Keywords. Endemic, dragon millipede, new species, taxonomy, Thailand.

Srisonchai R., Enghoff H., Likhitrakarn N. & Panha S. 2018. A revision of dragon millipedes II: the new genus *Nagaxytes* gen. nov., with the description of three new species (Diplopoda, Polydesmida, Paradoxosomatidae). *European Journal of Taxonomy* 462: 1–44. <https://doi.org/10.5852/ejt.2018.462>

Introduction

Srisonchai *et al.* (2018) subdivided the dragon millipede genus *Desmoxytes* Chamberlin, 1923, *sensu* Golovatch & Enghoff (1994) into five groups based on morphological characters and DNA sequence data; they regarded each of the groups as a separate genus. In the present article, the second in a series of articles about a revision of the dragon millipedes, we revise the ‘*acantherpestes*’ group *sensu* Srisonchai *et al.* (2018). For this group we erect the new genus *Nagaxytes* Srisonchai, Enghoff & Panha gen. nov. to include *Desmoxytes acantherpestes* Golovatch & Enghoff, 1994 from western Thailand as well as three new species.

The new genus *Nagaxytes* gen. nov. is narrowly distributed and restricted to limestone areas. All species are known only from western Thailand: Kanchanaburi, Prachuap Khiri Khan and Tak Provinces.

Material and methods

Specimen collecting and preservation

Specimens of *Nagaxytes* gen. nov. were collected by hand from many localities in the western part of Thailand. The main collectors are staff and students from the Animal Systematics Research Unit, Department of Biology, Faculty of Science, Chulalongkorn University, referred to as ‘ASRU members’. Coordinates and elevation were recorded by using Garmin GPSMAP 60 CSx, and were subsequently double-checked with Google Earth.

After collecting and photographing, most specimens were preserved in 70% ethanol for morphological study and some in 95% ethanol for molecular analysis (specimens kept in 95% ethanol at room temperature were later stored at –20°C in a freezer).

Illustrations

Living specimens were photographed using a Nikon 700D+AFS VR with a 105 mm lens. Scanning electron microscope images (SEMs) of gonopods were generated with a JEOL JSM–5410 LV. All objects were mounted on aluminium stubs and coated with gold; after imaging the objects were removed from the stubs and kept dry in eppendorf tubes. Drawings were sketched under a stereo microscope and finished using dot-line techniques.

Morphological descriptions

Specimens were studied for non-gonopod and gonopod characters under a stereo microscope and under SEM. Non-gonopod characters include size, colour, head, antennae, collum, tegument, prozona, metaterga, paraterga, telson, sterna, and legs. We use the morphological terminology according to previously published taxonomic papers (Jeekel 1964, 1980, 2003; Golovatch & Enghoff 1994; Enghoff *et al.* 2007; Srisonchai *et al.* 2016, 2018). Details of gonopod characters are provided in the gonopod terminology section below.

Deposition of holotypes, paratypes and other new specimens

All holotypes, some paratypes of the new species and new specimens are housed in CUMZ. Some paratypes and some new specimens are housed at NHMUK, NHMW, ZMUC and ZMUM.

Abbreviation of institutions

- CUMZ = Chulalongkorn University Museum of Zoology, Bangkok, Thailand
MHNG = Natural History Museum, Geneva, Switzerland
NHMUK = Natural History Museum, London, UK
NHMW = Natural History Museum, Vienna, Austria
ZMUC = Natural History Museum of Denmark (Zoological Museum), University of Copenhagen, Denmark
ZMUM = Zoological Museum, University of Moscow, Russia

Other abbreviations used in the text

- ASRU = Animal Systematics Research Unit, Department of Biology, Faculty of Science, Chulalongkorn University, Bangkok, Thailand
a.s.l. = above sea level
ca. = about, around (circa)

Gonopod terms for the genus *Nagaxytes* gen. nov., and their abbreviations

- Acropodite = apical part of gonopod; including femorite, solenophore and solenomere
ca = cannula, a short tube, lever-like, curved, slender; originating from coxa, tip inserted into concavity in the prefemoral part
cx = coxa, basal part of gonopod, rather stout, connecting to seventh body ring, attached to apertural rim dorsally; with a distoanterior group of setae
fe = femur, longest part of gonopod, straight; accommodates seminal groove
ll = lamina lateralis, a distinct lobe on distal part of gonopod; sometimes short, stout, compact; sometimes long; rarely with a spatulate lobe
lm = lamina medialis, a large part distally on gonopod, very long, snake-like
ls = lateral sulcus, a distinct sulcus distally on femur, conspicuously deep or shallow, visible in lateral view
ms = mesal sulcus, a distinct sulcus distally on femur, conspicuous and deep, usually seen in mesal view
op = ozopore
pfe = prefemoral part (= prefemur), basal portion of telopodite, densely setose
pof = postfemoral part (= postfemur), a short part of telopodite, supporting solenophore and solenomere, demarcated from femur by lateral sulcus and mesal sulcus
sg = seminal groove, a conspicuous groove, similar to a tunnel, seen as a transparent line, visible on femur in mesal view
sl = solenomere, a usually long, flagellum-like appendage, originating on base of solenophore
sph = solenophore (= tibiotarsus), apical part of telopodite, consisting of lamina lateralis and lamina medialis
Telopodite = Main part of gonopod, pivoting on coxa; including prefemoral part, femorite, solenophore and solenomere

Positional/directional terms in gonopod description

Traditionally the gonopods are depicted as rotated 90° up from their *in situ* position (following the terminology of Srisonchai *et al.* 2018).

- Dorsal = position on the side nearest to the body ring
Ventral = position on the side farthest away from the body ring
Mesal = position on the side nearest to the midline
Lateral = position on the side furthest from the midline

Dorsad = direction towards the body ring
Ventrad = direction away from the body ring
Mesad = direction towards the midline
Laterad = direction away from the midline

We use ‘sub-’ as a prefix referring to positions and directions slightly different from the ones given above. For example, ‘subdorsal’ means a position close to, but not quite on the dorsal side.

Results

Taxonomy

Class Diplopoda Blainville-Gervais, 1844
Order Polydesmida Pocock, 1887
Suborder Strongylosomatidea Brölemann, 1916
Family Paradoxosomatidae Daday, 1889
Subfamily Paradoxosomatinae Daday, 1889
Tribe Orthomorphini Brölemann, 1916

Genus *Nagaxytes* Srisonchai, Enghoff & Panha gen. nov.
[urn:lsid:zoobank.org:act:D3B82632-5FC4-4605-AC19-99EAFEB6A23B](https://doi.org/10.3896/eb.2018.462.1.1)

Type species

Desmoxytes acantherpestes Golovatch & Enghoff, 1994

Diagnosis

The genus *Nagaxytes* gen. nov. is characterized by:

1. Paraterga subspiniiform.
2. Metaterga with 2 rows of tubercles/cones/spines (lateral spines of posterior row very long).
3. Male femora 5 and 6 without modification.
4. Postfemoral part of gonopod conspicuous, demarcated from femur by a deep mesal sulcus and a shallow/deep lateral sulcus.
5. Lamina lateralis obviously separated from lamina medialis.
6. Lamina medialis long and curved, apically fringed/hooks.

Etymology

‘*Naga*’ is a Sanskrit and Pali word, relating to a category of snake-like spirits in Buddhist and Hindu mythology, and refers to the snake-like shape of the lamina medialis of the gonopod; ‘-xytes’ ensures harmony with *Desmoxytes* (and its synonym *Pteroxytes* Jeekel, 1980).

Included species (4)

- *N. acantherpestes* (Golovatch & Enghoff, 1994) gen. et comb. nov.
- *N. erecta* Srisonchai, Enghoff & Panha gen. et sp. nov.
- *N. gracilis* Srisonchai, Enghoff & Panha gen. et sp. nov.
- *N. spatula* Srisonchai, Enghoff & Panha gen. et sp. nov.

Remarks

Srisonchai *et al.* (2018) proposed to subdivide *Desmoxytes sensu* Golovatch & Enghoff (1994) into five genera. The ‘*acantherpestes*’ group (= *Nagaxytes*) is well-defined by several distinct morphological

characters (see diagnosis), especially the distinctive subspiniiform paraterga and the very long lamina medialis of the gonopods. Even though the subspiniiform paraterga are relatively similar to those of the ‘*gigas*’ group, the gonopod details are very different.

General description of *Nagaxytes* gen. nov.

The description applies to adult males and females, except for the gonopods or when ‘male’ is specified (Figs 1–3). The general description of gonopods is based mainly on *Nagaxytes gracilis* gen. et sp. nov. (Figs 4–5).

SIZE. Body length 22–34 mm (male) 24–38 mm (female), width ca. 2.0–2.4 mm (male) 2.8–3.4 mm (female), varies between species, usually female wider and longer than male.

COLOUR (Figs 1, 11–12, 17, 22). Specimens in life with brown or reddish brown colour or pinkish brown (possibly aposematic colouration). Colour in alcohol: all specimens partly faded to pale whitish brown after one year’s preservation in alcohol; specimens kept in darkness faded more slowly.

ANTENNAE (Fig. 2A–B, D). Long and slender, covered by delicate setation, usually reaching backwards to body ring 5–7 (male) and 4–6 (female) when stretched dorsally. Antennomere $3 = 4 > 5 \geq 2 > 6 > 1 > 7 > 8$.

HEAD. Delicately setose; vertex, labrum and genae delicately setose; epicranial suture conspicuous as brown stripe.

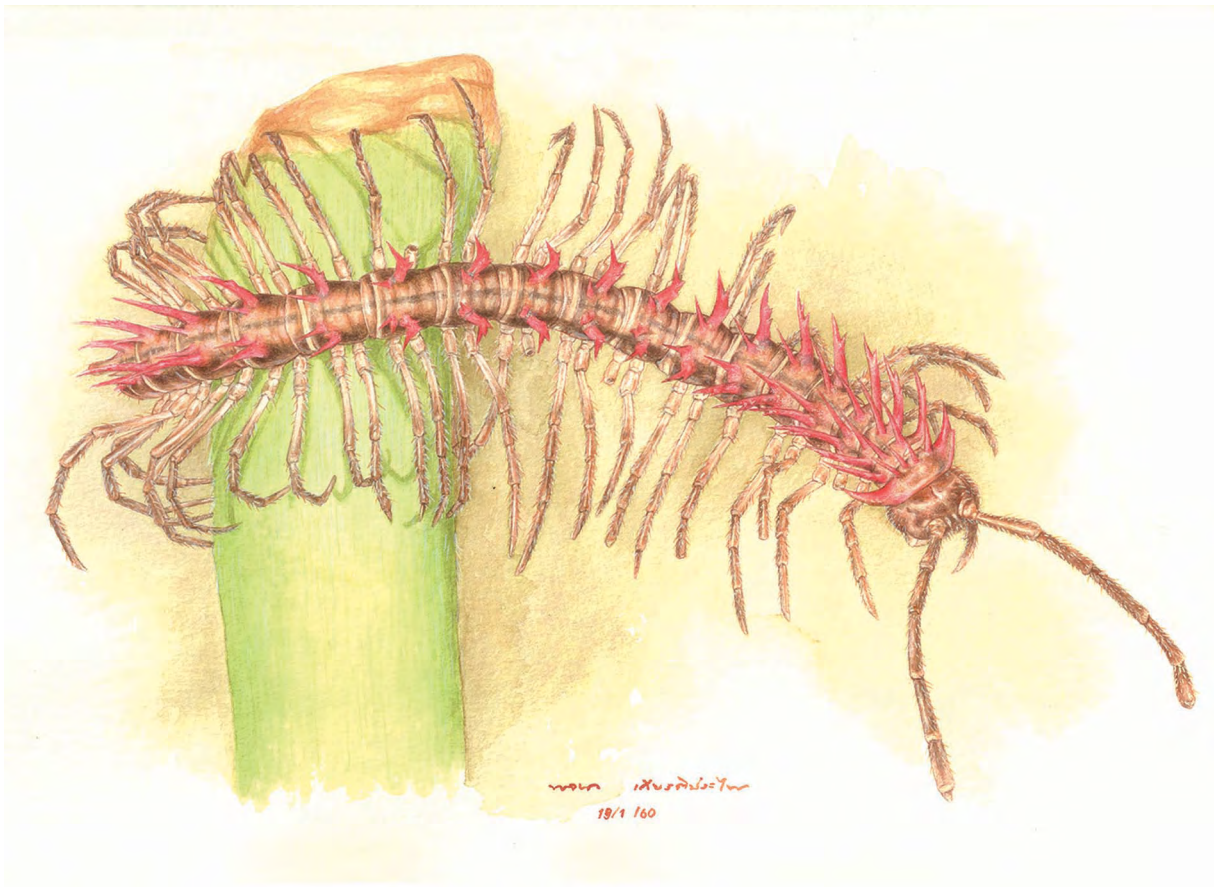


Fig. 1. *Nagaxytes gracilis* Srisonchai, Enghoff & Panha gen. et sp. nov., ♂, paratype (CUMZ-pxDGT00095). Watercolour by R. Srisonchai and P. Kriatprapai.

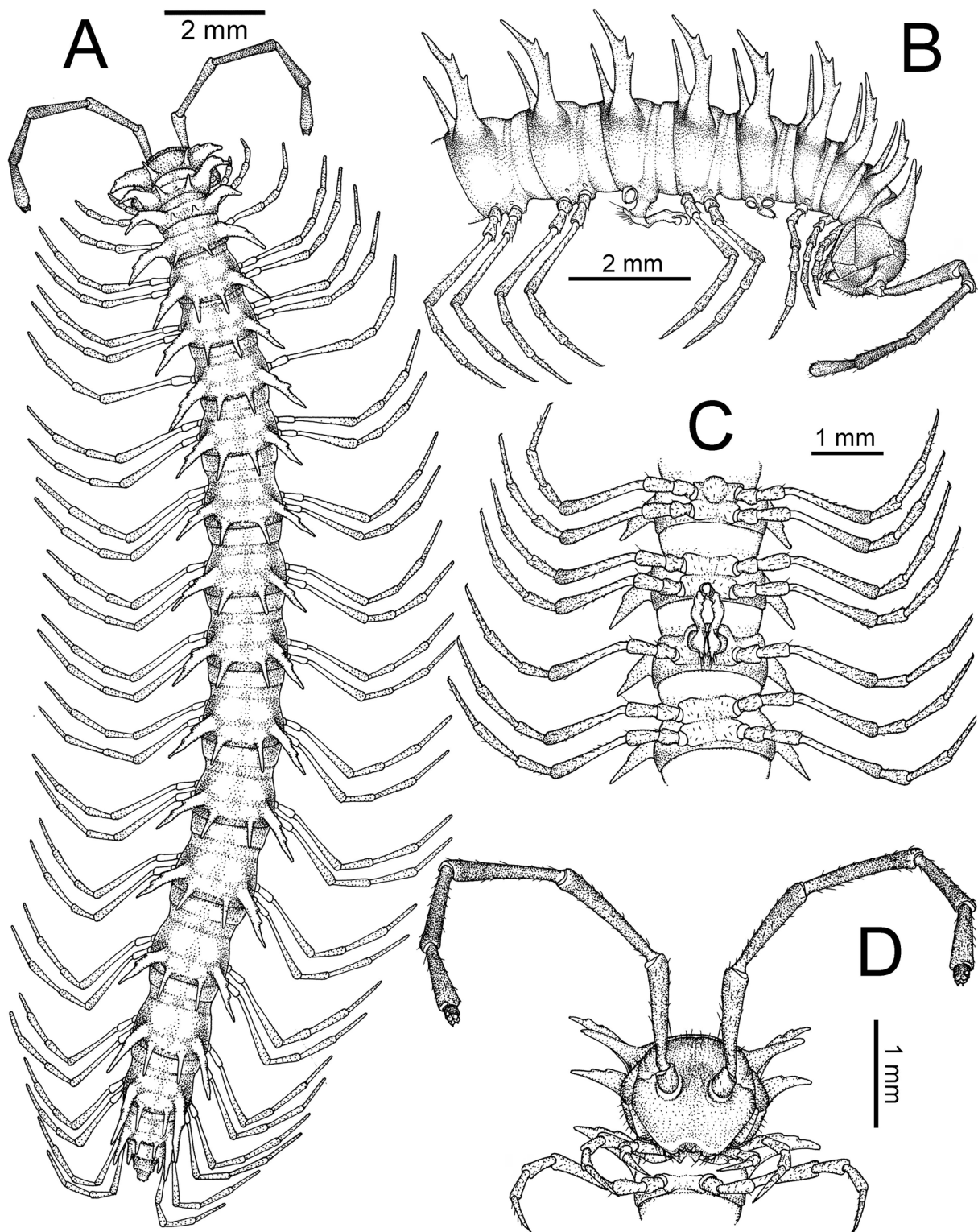


Fig. 2. General body characters of *Nagaxytes Srisonchai*, Enghoff & Panha gen. nov. – *N. acantherpestes* (Golovatch & Enghoff, 1994) gen. et comb. nov., ♂, holotype, Prachuap Khiri Khan Province, Hua Hin District (ZMUC 000101457). **A.** Entire body. **B.** Anterior body part. **C.** Body rings 5–8, showing sternal lobe between coxae 4 and gonopods on ring 7. **D.** Head and antennae.

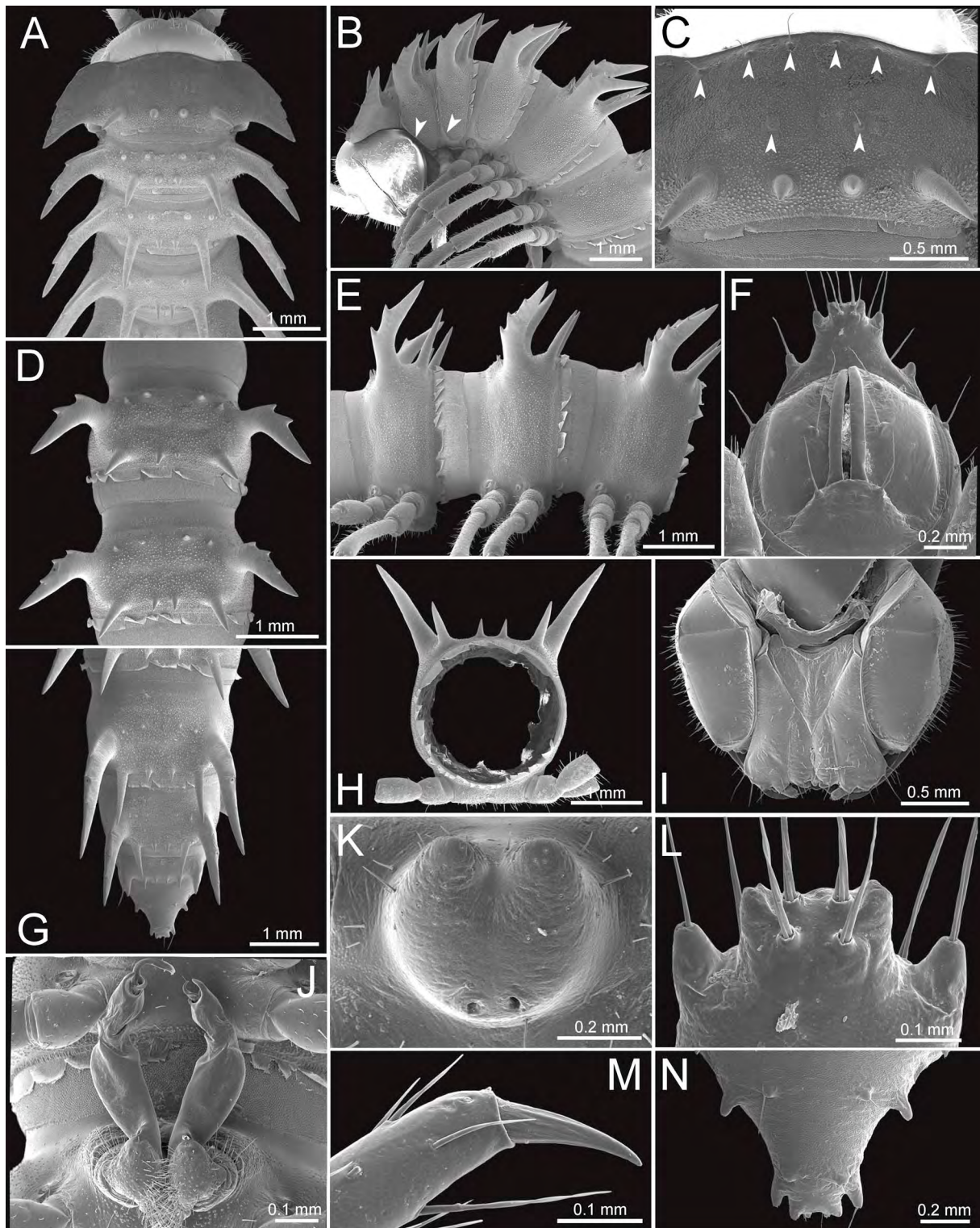


Fig. 3. General body characters of *Nagaxytes Srisonchai*, Enghoff & Panha gen. nov. (*N. erecta* Srisonchai, Enghoff & Panha gen. et sp. nov., specimen from Prang Ka Sri Temple, Thailand), SEM images. **A–B.** Anterior body part (arrowheads point to pleurosternal carinae). **C.** Collum (arrowheads point to the setae/tubercles of the anterior and intermediate rows). **D.** Body rings 9–10. **E.** Body rings 8–10. **F.** Telson. **G.** Posteriormost rings and telson. **H.** Body ring 10. **I.** Mouth parts, ventral view. **J.** Gonopods *in situ*. **K.** Sternal lobe between male coxae 4. **L, N.** Tip of epiproct. **M.** Tarsus and claw of leg 13.

COLLUM (Fig. 3A, C). With three transverse rows of setae/tubercles and spines; 3+3 setae/tubercles (anterior row), 1+1 setae/tubercles (intermediate row) and 2+2 spines (posterior row); lateral spines of posterior row very long. Paraterga of collum wing-like, usually elevated at ca. 25°–40°, with two conspicuous notches at lateral margin.

TEGUMENT (Fig. 3A–G). Often dull, sometimes quite shiny; collum, metaterga (except anterior part of metaterga smooth) and surface below paraterga finely microgranulate; prozona finely shagreened; paraterga, sterna and epiproct smooth. Stricture between prozona and metazona wide, usually quite shallow, sometimes quite deep.

METATERGA (Figs 2A, 3A, D, G). With one or two transverse rows of setae/tubercles and spines; usually with 2+2 setae/tubercles/cones/spines in anterior row and 2+2 spines in posterior row (sometimes setae/tubercles/cones/spines in anterior row poorly developed or absent); lateral spines of posterior row longer and larger than mesal ones. Suture (transverse sulcus) on metaterga quite deep, conspicuous on body ring 5–17 in all species. Mid-dorsal (axial) line missing.

PLEUROSTERNAL CARINAE (Fig. 3B). Forming a complete crest on ring 2, small ridges on ring 3 and/or 4, missing on remaining body rings.

PARATERGA (Fig. 3A–B, D–E, G–H). Subspiniiform, long, elevated at ca. 50°–70° (male) or 45°–70° (female), directed caudolaterad on rings 2–17 or 2–18, directed increasingly caudad on ring 19 or 18–19. Callus and shoulder poorly developed. Anterior margin with two distinct notches; on body rings 9, 10, 12, 13, 15–18 a denticle usually present at lateral margin near tip (denticle absent in some rings). Degree of elevation of paraterga in male usually higher than in female. Posterior edge concave; posterior angle pointed and sharp. Ozopore visible in lateral and dorsal views, round, small, somewhat inconspicuous.

TELSON (Fig. 3F–G, L, N). Epiproct quite short, often flattened dorsoventrally, tip usually subtruncate, sometimes emarginate; lateral setiferous tubercles conspicuous, digitiform; apical tubercles mostly conspicuous, sometimes inconspicuous; setiferous tubercles beyond lateral setiferous tubercles long, digitiform; epiproct apically with four spinnerets at the corners of a square, not in a depression, anterior pair close to apical tubercles (Fig. 3L). Paraprocts convex. Hypoproct subtriangular or subtrapeziform; caudal margin often subtriangular, sometimes round, with two conspicuous or inconspicuous setiferous tubercles.

STERNA (Figs 2C, 3K). Sparsely setose; cross-impressions somewhat deep, sometimes quite shallow. Sternal lobe between male coxae 4 modified; usually subtrapeziform, sometimes incompletely bilobed, varying between species; tip slightly emarginate, sometimes deeply emarginate or even incompletely bilobed; with two pores seen in posterior view.

LEGS (Fig. 2A–C). Very long and slender. Relative lengths of podomeres: femur > tarsus > tibia > prefemur = postfemur > coxa > claw. Male femora 5 and 6 without modification in all species.

GONOPODS (Figs 4–5). Coxa longer than prefemoral part, with a distoanterior group of setae. Cannula long or short. Telopodite straight. Prefemoral part usually shorter than femur, sometimes subequal in length to femur. Femur usually long, sometimes quite short. Seminal groove running entirely on mesal surface of femur. Mesal sulcus and lateral sulcus conspicuous. Postfemoral part conspicuous, shorter than femur. Solenophore well-developed: lamina lateralis variously modified; swollen, sometimes long digitiform/lamella-like and projecting, sometimes with spatula-like lobe; lamina medialis longer than lamina lateralis, snake-like, tip curving down. Solenomere relatively long.

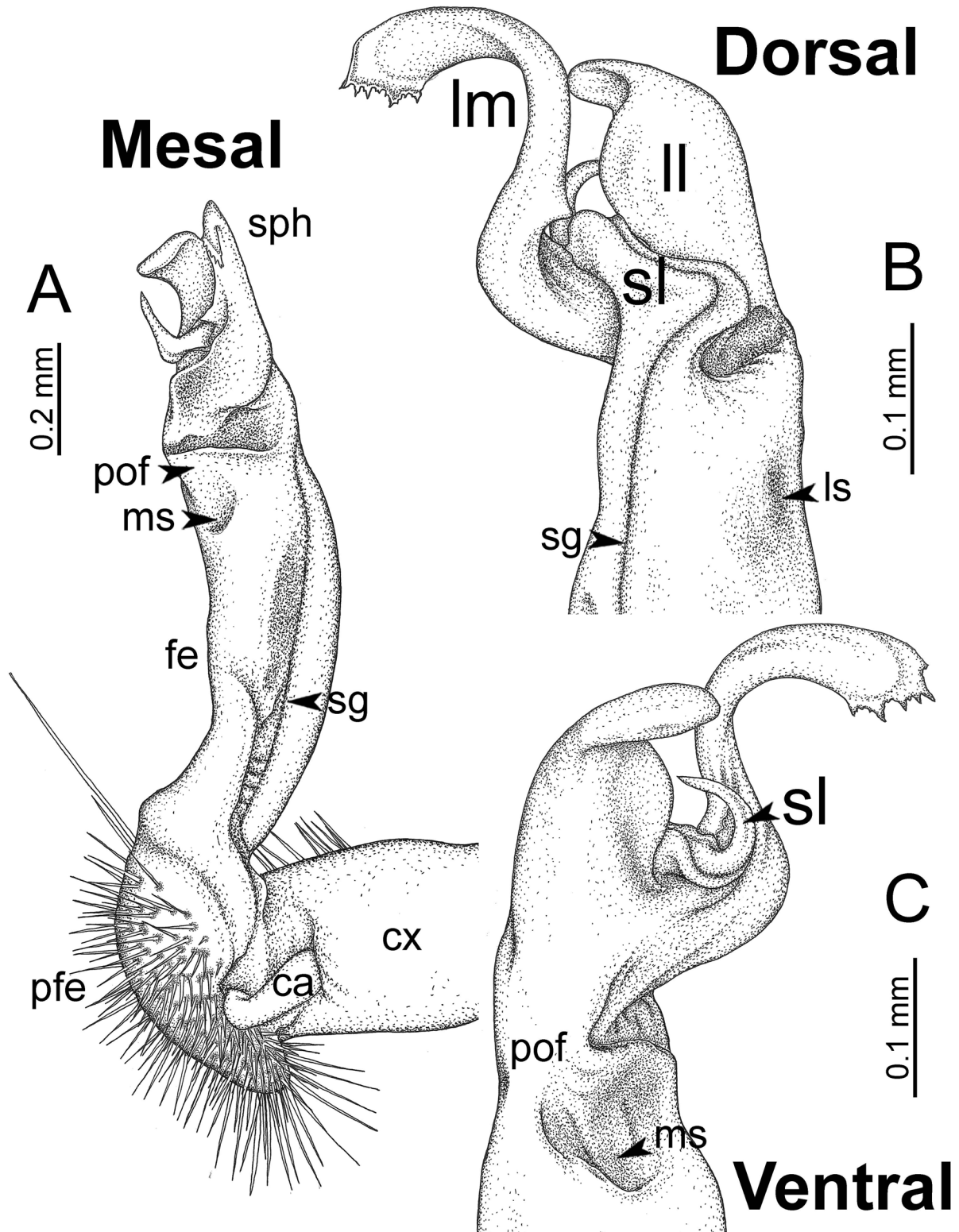


Fig. 4. Diagrammatic drawing of right gonopod of *Nagaxytes* Srisonchai, Enghoff & Panha gen. nov. – *N. gracilis* Srisonchai, Enghoff & Panha gen. et sp. nov., specimen from Wat Vimooddhi Wanaram, Thailand. A. Mesal view. B. Dorsal view. C. Ventral view.

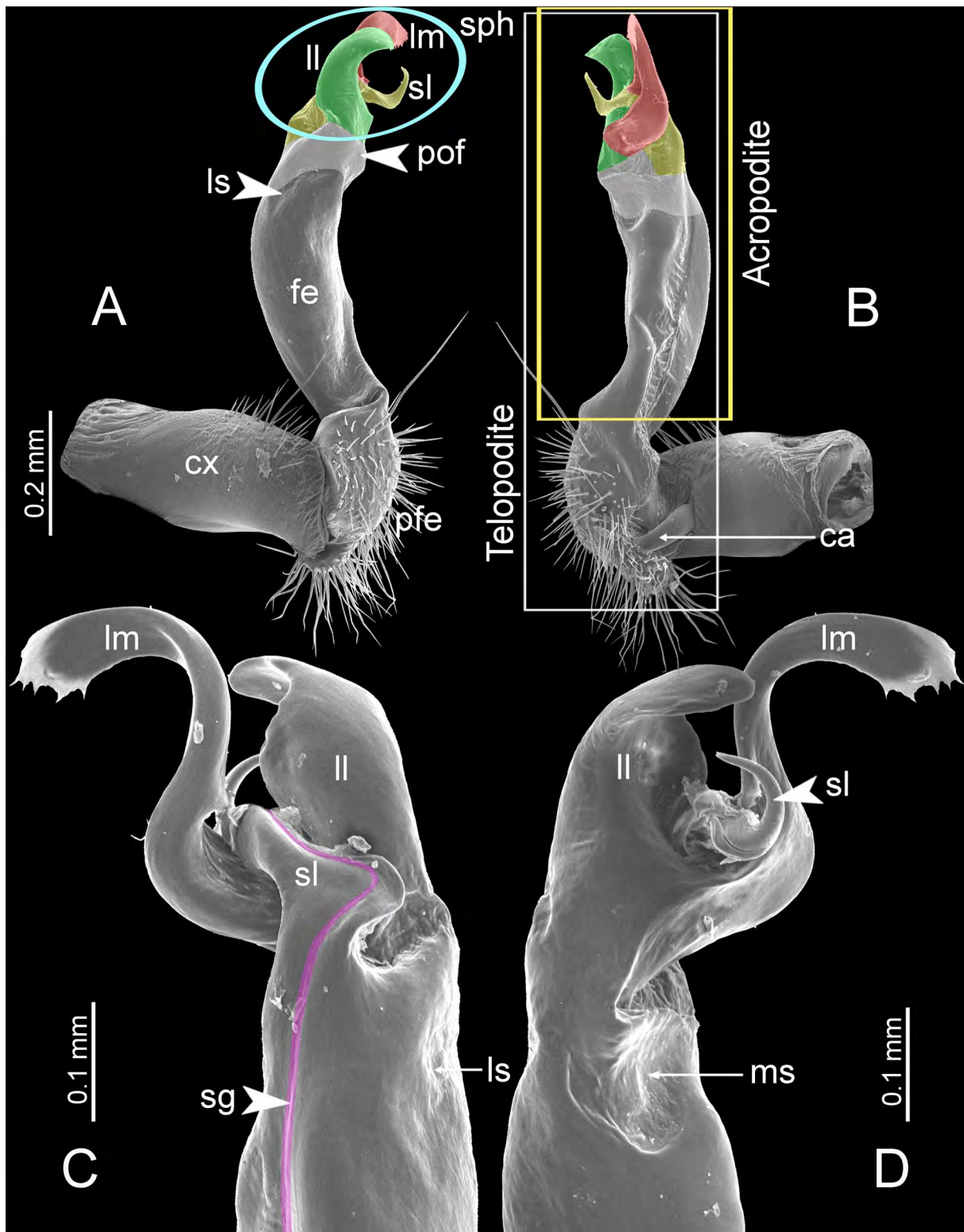


Fig. 5. SEM images of right gonopod of *Nagaxytes Srisonchai*, Enghoff & Panha gen. nov. – *N. gracilis* Srisonchai, Enghoff & Panha gen. et sp. nov., specimen from Wat Vimooddhi Wanaram, Thailand. **A.** Lateral view. **B.** Mesal view. **C.** Dorsal view. **D.** Ventral view. Colours: red = lamina medialis, green = lamina lateralis, yellow = solenomere, purple = seminal groove.

Distribution and habitat

This genus is known only from the western part of Thailand: Prachuap Khiri Khan Province (Hua Hin and Kui Buri Districts), Kanchanaburi Province (Sai Yok and Thong Pha Phum Districts) and Tak Province (Mae Sot and Umphang Districts) (Fig. 27). All four species seem to be local endemics, highly restricted to limestone habitats, and all have narrow distribution ranges. The specimens were usually found on humid rocks, rock walls, leaf litter or surface roots of trees. Some species can be found syntopically in the same habitat with other dragon millipede species.

Key to species of *Nagaxytes* gen. nov. (based mainly on males)

1. Gonopod with lamina lateralis long (e.g., Figs 15B, 16C, 20B, 21C), or with lobe (e.g., Figs 25B, 26C) 2
 - Lamina lateralis short, swollen, stout, compact, without lobe (e.g., Figs 9B, 10C, F)
..... *N. acantherpestes* (Golovatch & Enghoff, 1994) gen. et comb. nov.
2. Body length 22–26 mm in male, 24–28 mm in female. Lamina lateralis with a curved, long, spatulate lobe (Figs 25–26); solenomere terminating in two curved processes (Figs 25B, 26E)
..... *N. spatula* Srisonchai, Enghoff & Panha gen. et sp. nov.
 - Body length 30–36 mm in male, 35–38 mm in female. Lamina lateralis without spatulate lobe; solenomere terminating in one process (e.g., Figs 15D, 16D, 20D, 21D) 3
3. Metaterga 4–19 with conspicuous anterior row of tubercles/cones/spines (Fig. 13A–C). Sternal lobe between male coxae 4 subtrapeziform (Fig. 14J). Lamina lateralis erect, digitiform, thick, tip directed anteriorly (Figs 15B–D, 16C, E–F) *N. erecta* Srisonchai, Enghoff & Panha gen. et sp. nov.
 - Metaterga 4–19 without anterior row of tubercles/cones/spines (Fig. 18A–C). Sternal lobe between male coxae 4 not subtrapeziform, incompletely bilobed, tip deeply emarginate (Fig. 19J). Lamina lateralis lamella-like, curved, broad, thin, tip directed mesoventrad (Figs 20B–D, 21C–F)
..... *N. gracilis* Srisonchai, Enghoff & Panha gen. et sp. nov.

Species descriptions

Nagaxytes acantherpestes (Golovatch & Enghoff, 1994) gen. et comb. nov.
Figs 2, 6–10

Desmoxytes acantherpestes Golovatch & Enghoff, 1994: 51–53, figs 21–28.

Desmoxytes acantherpestes – Enghoff 2005: 96. — Decker 2010: 28. — Nguyen & Sierwald 2013: 1240.

Diagnosis

Metaterga 4–19 with one row of 2+2 posterior spines (anterior row absent). Similar in this respect to *N. gracilis* gen. et sp. nov. but differs from this species by having paraterga shorter; degree of elevation of paraterga lower; sternal lobe between male coxae 4 subtrapeziform; lamina lateralis swollen, stout, short.

Material examined

Holotype

THAILAND: ♂, western coast of Siam Gulf (Gulf of Thailand), Hua Hin [Prachuap Khiri Khan Province, Hua Hin District], 8 Aug. 1979, B. Petersen leg. (ZMUC 000101457).

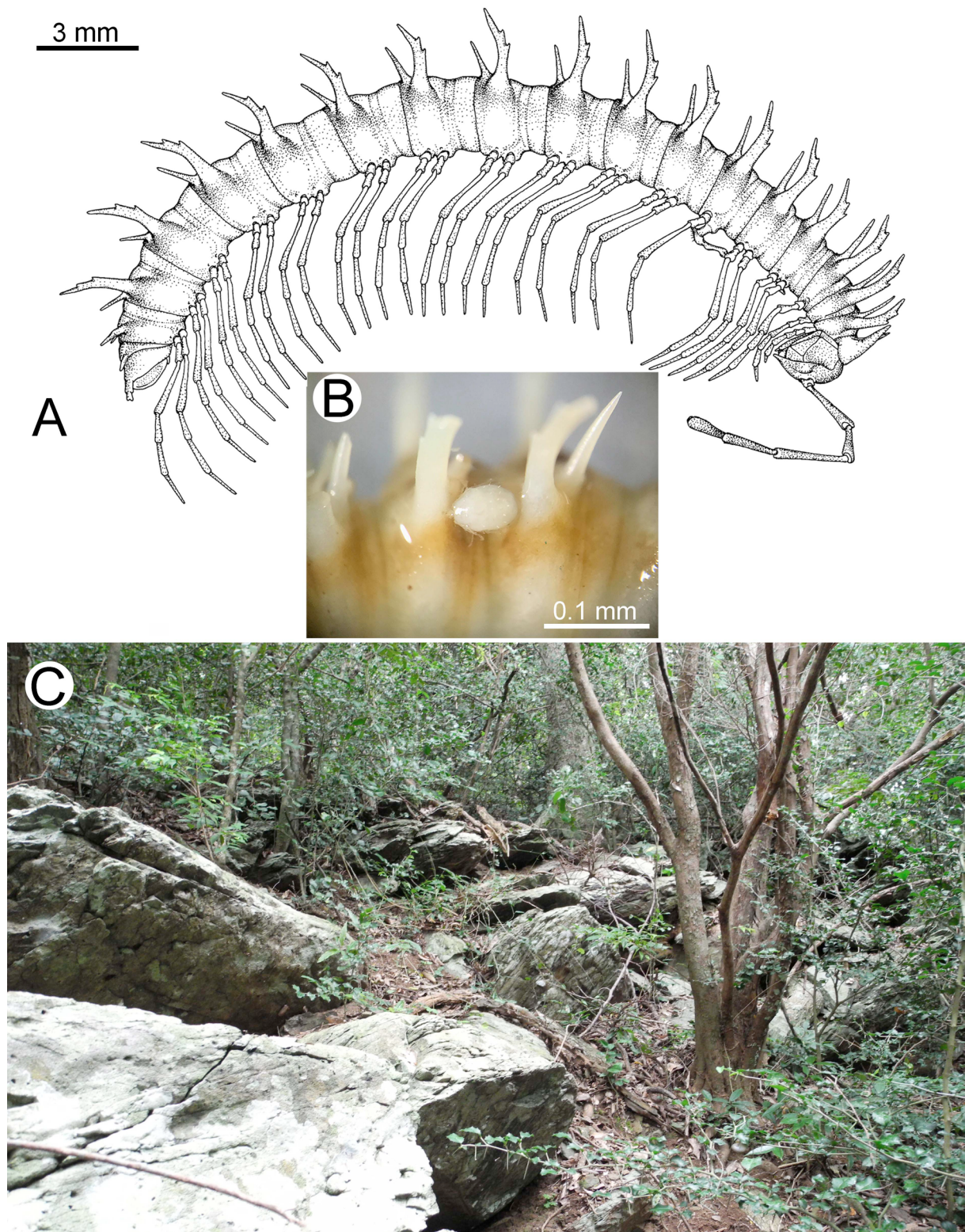


Fig. 6. *Nagaxytes acantherpestes* (Golovatch & Enghoff, 1994) gen. et comb. nov. A. Drawing of ♂, holotype (ZMUC 000101457). B. Parasitic mite. C. Habitat.

Other material

THAILAND: 2 ♂♂, 1 ♂ (gonopods lost), 1 ♀, Prachuap Khiri Khan Province, Kui Buri District, Hat Kham Subdistrict, Ban Yan Sue, 12°03'12" N, 99°37'52" E, ca. 147 m a.s.l., 31 Aug. 2007, ASRU members leg. (CUMZ).

Redescription

SIZE. Length 32–34 mm (male), 36 mm (female); width of midbody metazona ca. 2.2 mm (male), 3.0 mm (female). Width of head < body ring 2 = 3 < collum < 4 < 5–16, thereafter body gradually tapering towards telson.

COLOUR. Specimens in life brown. Colour in alcohol: after 29 years changed to pale brown; head, antennae, collum, metaterga, surface below paraterga, sterna, epiproct pale brown; paraterga brownish white.

COLLUM (Fig. 7A). With setae in anterior row and intermediate row, spines in posterior row; paraterga of collum elevated at ca. 35–40°, directed caudolaterad, with two conspicuous notches at lateral margin.

ANTENNAE (Fig. 7D). Moderately long and slender, reaching to body ring 5 or 6 (male) and 5 (female) when stretched dorsally.

TEGUMENT. Quite dull. Stricture between prozona and metazona shallow, wide.

METATERGA (Fig. 7A–C). With one or two transverse rows of setae and spines; metatergum 2 with ?1+?1 anterior setae (inconspicuous) and 2+2 posterior spines; metaterga 3–19 with 2+2 posterior spines (lateral spines very long).

PLEUROSTERNAL CARINAE. On body ring 2 long, crest-like; on body ring 3 a small ridges; thereafter missing.

PARATERGA (Figs 7F–G, 8B). Directed caudolaterad on body rings 2–18, elevated at ca. 60° (male) 50°–60° (female), directed increasingly caudad on body ring 19.

TELSON (Fig. 8C–G). Epiproct quite short; tip usually subtruncate (in some specimens slightly emarginate); lateral setiferous tubercles conspicuous, long, digitiform; apical tubercles conspicuous. Hypoproct subtriangular; caudal margin subtriangular, with inconspicuous setiferous tubercles.

STERNA (Fig. 8H–J). Cross-impressions quite deep. Sternal lobe between male coxae 4 swollen, subtrapeziform when seen in caudal view; base broad; tip slightly or deeply emarginate.

GONOPODS (Figs 9, 10). Coxa subequal in length to femur. Cannula long and slender. Telopodite quite long and slender. Prefemoral part ca. $\frac{2}{3}$ as long as femur. Femur quite long and slender. Mesal sulcus conspicuous, deep, wide; lateral sulcus conspicuous, very deep. Postfemoral part conspicuous, quite short. Solenophore well-developed: lamina lateralis swollen, stout, short, compact; lamina medialis very long; with a swollen base, gradually becoming thinner towards tip; apically fringed with several small spines; tip directed mesoventrad. Solenomere quite long, curved, tip directed ventrad.

Distribution and habitat

This species is known from two locations (Hua Hin and Ban Yan Sue) in Prachuap Khirikhan Province. We believe that the holotype was probably collected from limestone habitats because the type locality (near Hua Hin) lies in a limestone area. Specimens collected by us were from limestone habitats. It has been found crawling on rocks or on leaf litter.

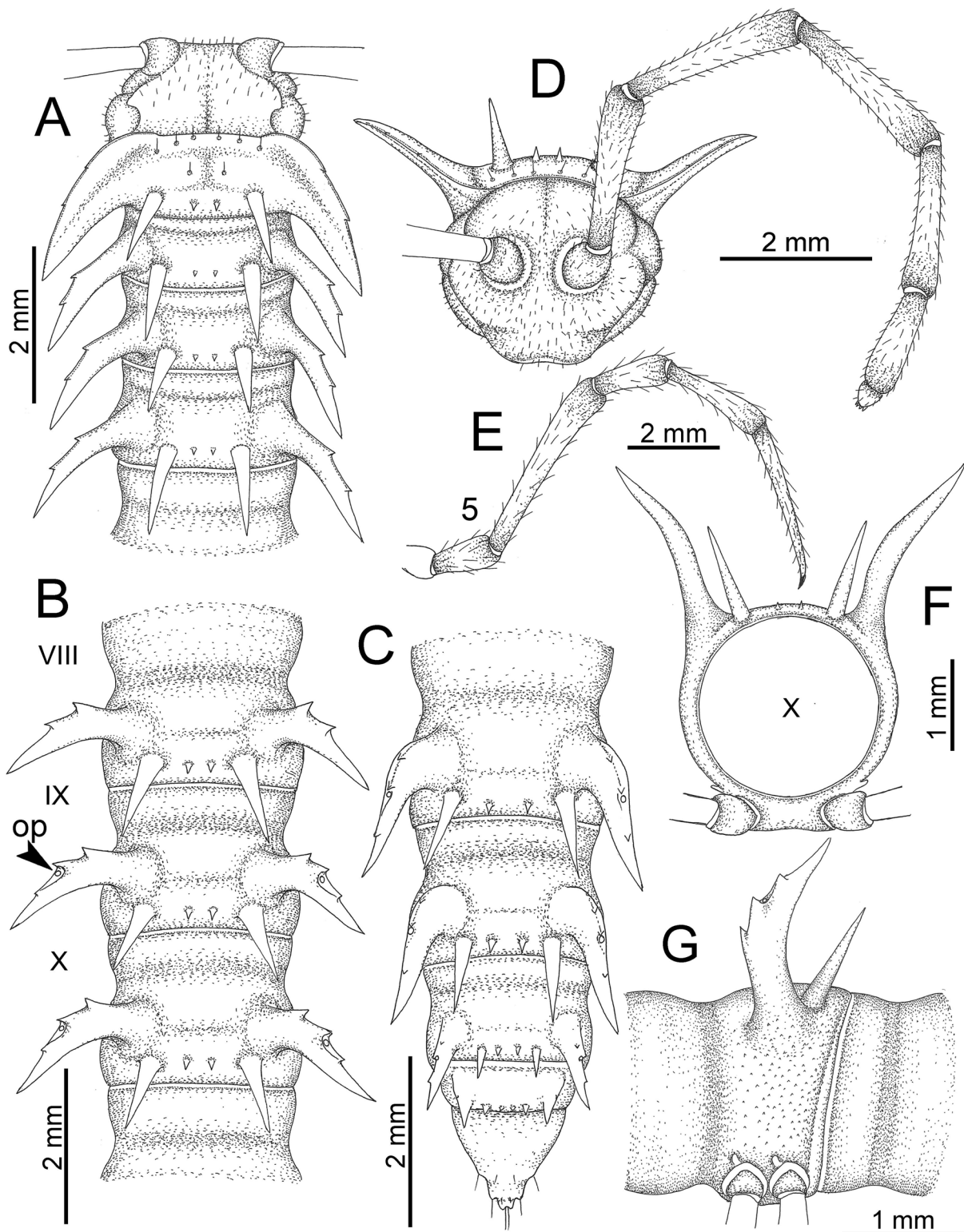


Fig. 7. *Nagaxytes acantherpestes* (Golovatch & Enghoff, 1994) gen. et comb. nov., ♂, holotype (ZMUC 000101457). **A.** Anterior body part. **B.** Body rings 8–10. **C.** Posteriormost body rings and telson. **D.** Head and antenna. **E.** ♂ leg 5 (right). **F–G.** Midbody ring.

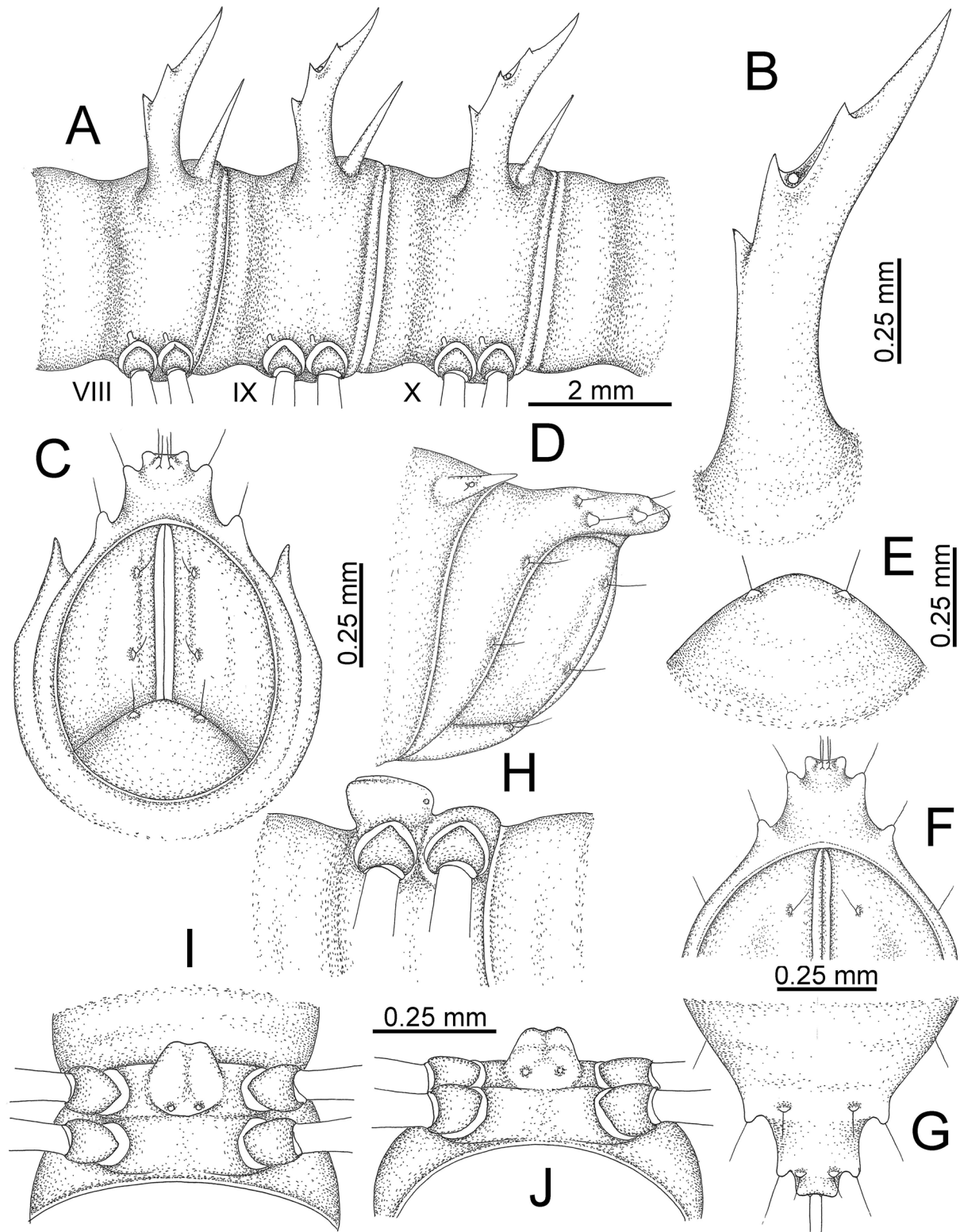


Fig. 8. *Nagaxytes acantherpestes* (Golovatch & Enghoff, 1994) gen. et comb. nov., ♂, holotype (ZMUC 000101457). A. Body rings 8–10. B. Paraterga of ring 10. C–D. Last ring and telson. E. Hypoproct. F–G. Epiproct. H–J. Sternal lobe between coxae 4.

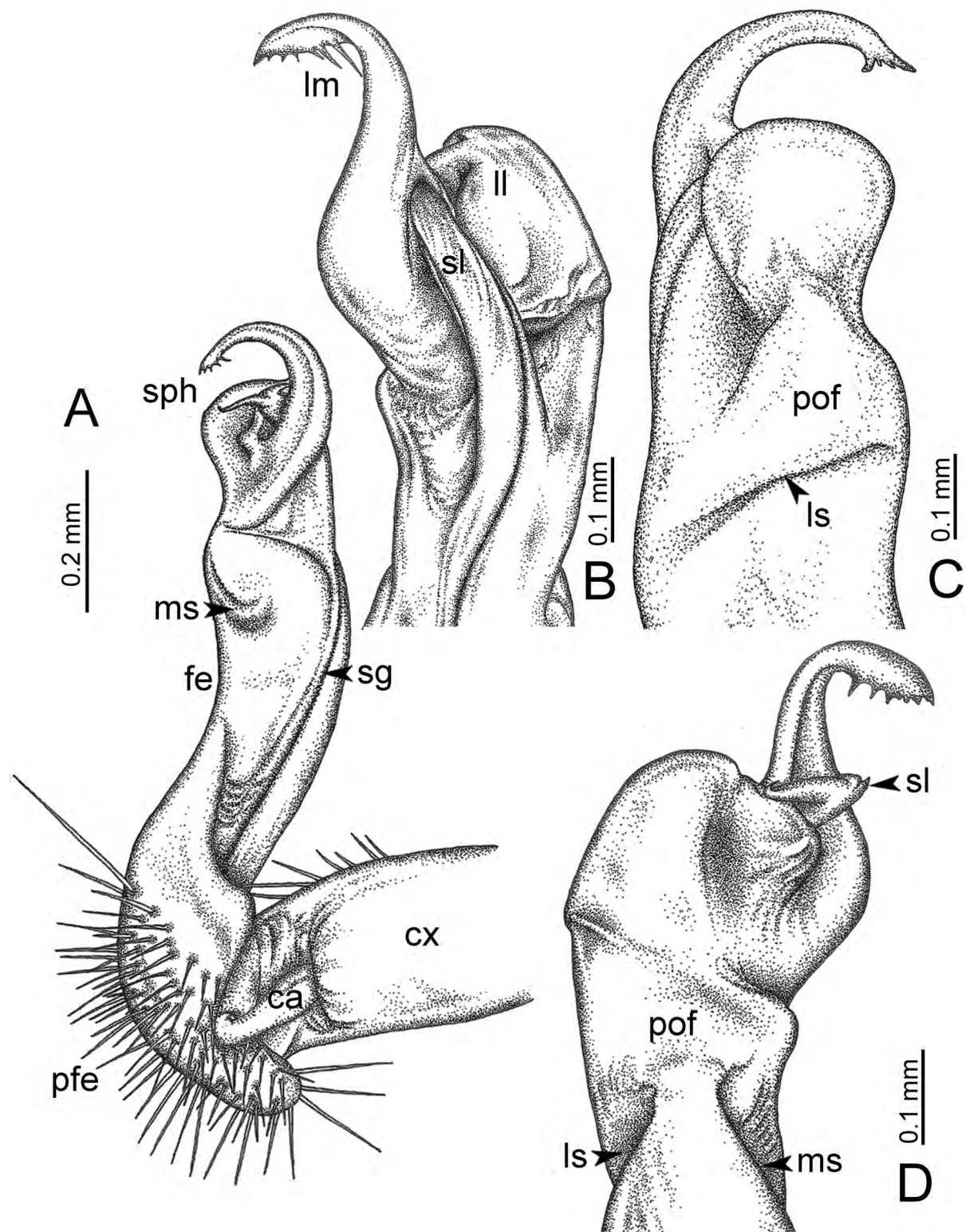


Fig. 9. *Nagaxytes acantherpestes* (Golovatch & Enghoff, 1994) gen. et comb. nov., specimen from Ban Yan Sue (Thailand), right gonopod. **A.** Mesal view. **B.** Dorsal view. **C.** Lateral view. **D.** Ventral view.

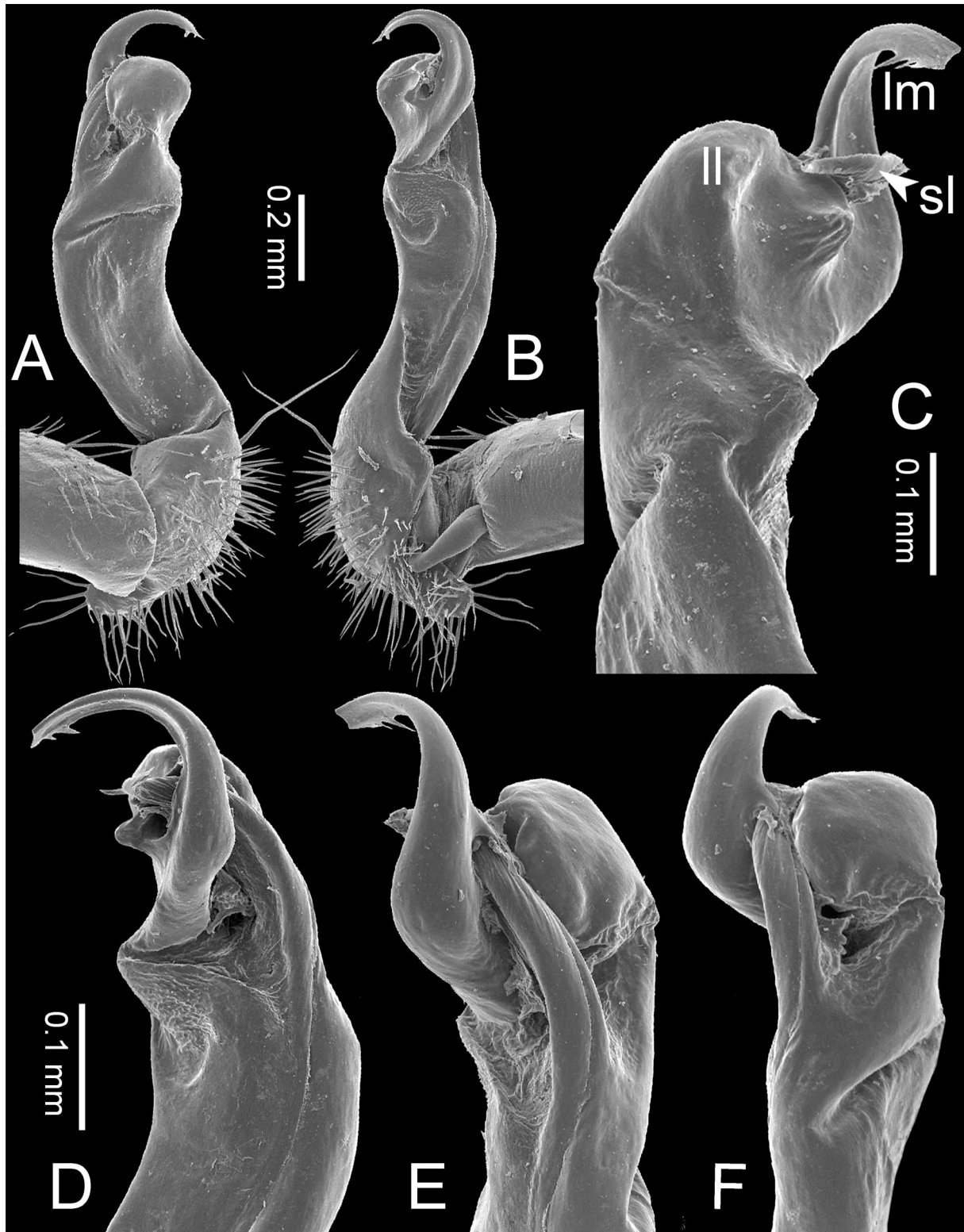


Fig. 10. *Nagaxytes acantherpestes* (Golovatch & Enghoff, 1994) gen. et comb. nov., specimen from Ban Yan Sue (Thailand), right gonopod. **A.** Lateral view. **B.** Mesal view. **C.** Ventral view. **D, F.** Subdorsal view. **E.** Dorsal view.

This species is likely to be syntopic with *Desmoxytes planata* (Pocock, 1895) at Ban Yan Sue; however, we noticed that the habitats of these two species are clearly different. *Nagaxytes acantherpestes* gen. et comb. nov. lives on the ground or on limestone rocks while *D. planata* was found on tree trunks near garbage.

Decker (2010) identified one male in NHMG, collected from Thanboke Khorani National Park, Krabi Province (8°23'12" N, 98°44'16" E) as *D. acantherpestes*. This specimen might perhaps be '*D. gigas* Golovatch & Enghoff, 1994 (in the '*gigas*' group) because the location falls in the distribution range for this group in South Thailand whereas *Nagaxytes* gen. nov. (the '*acantherpestes*' group) is limited to western Thailand. Moreover, Thanboke Khorani National Park and Hua Hin are far apart, about 500 km.

This species is distributed in a narrow area; we regard *N. acantherpestes* gen. et comb. nov. as endemic to Prachuap Khiri Khan Province, Thailand.

Remarks

In the original description, Golovatch & Enghoff (1994) did not comment on the live colouration of this species. We did not photograph living specimens, but our collector noticed a brown colouration. Golovatch & Enghoff (1994) also described *D. acantherpestes* as lacking pleurosternal carinae, but after we re-examined the holotype and examined all newly collected specimens, we found the pleurosternal carinae as crest-like on ring 2, as small ridges on ring 3, thereafter absent. There is a variation in the tip of the epiproct which in some specimens is subtruncate, in others slightly emarginate.

On some specimens we found parasitic mites, probably of the genus *Leptus* Latreille, 1795 (Fig. 6B). The mites infested the millipede on the metaterga. This association reminds us of what Srisonchai *et al.* (2018) found in *Desmoxytes cervina* (Pocock, 1895): several engorged *Leptus* mites attached to the millipede body.

Nagaxytes erecta Srisonchai, Enghoff & Panha gen. et sp. nov.
[urn:lsid:zoobank.org:act:914BBC06-157C-419B-8B66-EBD18475B5BC](https://zoobank.org/act:914BBC06-157C-419B-8B66-EBD18475B5BC)

Figs 3, 11–16

Diagnosis

Metaterga 2–8 with two rows of spines (1+1 or 2+2 spines in anterior row, 2+2 spines in posterior row). Similar in this respect to *N. spatula* gen. et sp. nov. but differs by having: degree of elevation of paraterga lower; apical tubercles of epiproct conspicuous; surface near lateral sulcus without ridge (not swollen); lamina lateralis erect, long, thick, digitiform, tip round and directed anteriorly; lamina medialis very long, apically fringed.

Etymology

The name is a Latin adjective and refers to the erect lamina lateralis of the gonopod telopodite.

Material examined

Holotype

THAILAND: ♂, Kanchanaburi Province, Thong Pha Phum District, Phuphrai Thannam Resort, 14°44'0.6" N, 98°38'36" E, ca. 112 m a.s.l., 17 Aug. 2016, ASRU members leg. (CUMZ-pxDGT00001).

Paratypes

THAILAND: 52 ♂♂, 36 ♀♀, same data as for holotype (CUMZ-pxDGT00002-89); 1 ♂, 1 ♀, same data as for holotype (ZMUC 00040244); 1 ♂, 1 ♀, same data as for holotype (ZMUM); 1 ♂, 1 ♀, same data as for holotype (NHMW); 1 ♂, 1 ♀, same data as for holotype (NHMUK).

Further specimens, not paratypes

THAILAND – Kanchanaburi Province: **Thong Pha Phum District:** 1 ♂ (gonopods lost), 4 ♀♀, Vajiralongkorn Dam, 28 Aug. 2011, ASRU members leg. (CUMZ); 2 ♂♂, 2 ♀♀, Ban Nong Bang (near Wat Pha Sukit Suwannaket), 14°34'31" N, 98°49'04" E, ca. 151 m a.s.l., 12 Oct. 2015, ASRU members leg. (CUMZ); 4 ♂♂, 3 ♀♀, Wat Pak Lam Pilock, 14°37'41" N, 98°34'26" E, ca. 257 m a.s.l., 11 Oct. 2015, ASRU members leg. (CUMZ); 1 ♂, 3 ♀♀, Wat Tha Kha-nun, 14°44'36" N, 98°38'18" E, ca. 114 m a.s.l., 24 Jul. 2016, P. Pimvichai, P. Prasankok and N. Nantararat leg. (CUMZ); 12 ♂♂, 21 ♀♀, Wat Tha Kha-nun, 14°44'36" N, 98°38'18" E, ca. 114 m a.s.l., 16 Aug. 2016, ASRU members leg. (CUMZ); 20 ♂♂, 46 ♀♀, Prang Ka Sri Temple (Wat Prang Ka Sri), 14°39'05" N, 98°40'08" E, ca. 106 m a.s.l., 15 Aug. 2016, leg. ASRU members (CUMZ). – **Sai Yok District:** 1 broken ♂ (gonopods lost), Daowadueng Cave, 14°28'23" N, 98°50'04" E, ca. 133 m a.s.l., 8 Sep. 2008, ASRU members leg. (CUMZ); 4 ♂♂, 5 broken ♂♂, 1 broken ♂ (right gonopod lost), 2 ♂♂ (left gonopod lost), 1 ♂ (remaining rings 1–8), 10 ♀♀, 1 juvenile, Daowadueng Cave, 14°28'23" N, 98°50'04" E, ca. 133 m a.s.l., 11 Jul. 2009, ASRU members leg. (CUMZ); 5 ♂♂, 4 ♀♀, Daowadueng Cave, 14°28'23" N, 98°50'04" E, ca. 133 m a.s.l., 12 Oct. 2015, ASRU members leg. (CUMZ); 6 ♂♂, 2 ♀♀, Daowadueng Cave, 14°28'23" N, 98°50'04" E, ca. 133 m a.s.l., 15 Aug. 2016, ASRU members leg. (CUMZ); 6 ♂♂, 2 ♀♀, Wat Sunantha Wanaram, 14°32'11" N, 98°49'51" E, ca. 161 m a.s.l., 17 Aug. 2016, ASRU members leg. (CUMZ).

Description

SIZE. Length 32–36 mm (male), 36–38 mm (female); width of midbody metazona ca. 2.4 mm (male), 3.4 mm (female). Width of head < collum < body ring 2 = 3 < 4 < 5–17, thereafter body gradually tapering towards telson.

COLOUR (Figs 11, 12A–C). Specimens in life falling into two colour morphs: Reddish brown morph – body reddish brown; paraterga pinkish red; collum, metaterga and epiproct reddish brown; head, antennae (except whitish distal part of antennomere 7 and antennomere 8), prozona, surface below paraterga, sterna and legs brown; a few basal podomeres whitish brown. Brown morph – body brown; paraterga pinkish red; head, antennae (except whitish distal part of antennomere 7 and antennomere 8), collum, prozona, metaterga, epiproct and legs brown; paraterga and sterna pale brown; surface below paraterga brown or dark brown; a few basal podomeres whitish brown. Colour in alcohol: after 3–10 years changed to pale brown; head, antennae, collum, metaterga, surface below paraterga, sterna, epiproct, legs pale brown or whitish brown; paraterga brownish white.

COLLUM (Fig. 13A). With three transverse rows of setiferous tubercles and spines, 3+3 tubercles in anterior row, 1+1 tubercles in intermediate row and 2+2 spines in posterior row; paraterga of collum long and broad, elevated at ca. 40°–45° (male) 35°–40° (female), directed caudolaterad, with two conspicuous notches at lateral margin.

ANTENNAE (Fig. 13D). Moderately long and slender, reaching to body ring 5 or 6 (male) and 4 or 5 (female) when stretched dorsally.

TEGUMENT. Quite dull. Stricture between prozona and metazona shallow, wide.

METATERGA (Fig. 13A–C). With two transverse rows of cones and spines; metaterga 2–15 with 2+2 anterior spines and 2+2 posterior spines (posterior spines longer and thicker than anterior ones; lateral spines of posterior row very long); metaterga 16–18 with 2+2 anterior cones/spines and 2+2 posterior cones/spines (brown morph – anterior cones/spines inconspicuous; lateral spines of posterior row very long); metatergum 19 with 1+1 anterior small tubercles/cones and 2+2 posterior spines (brown morph – anterior tubercles/cones poorly developed).

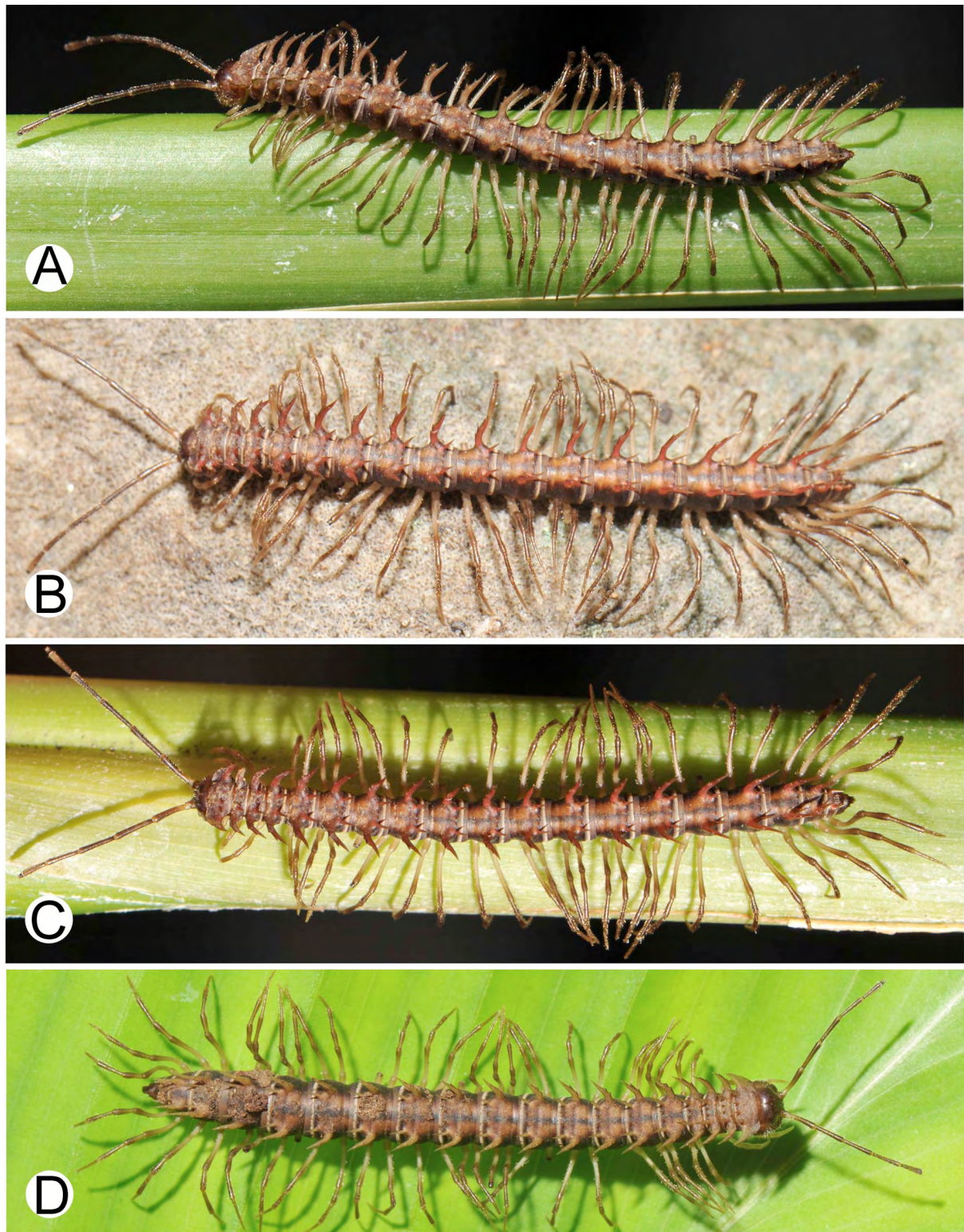


Fig. 11. Live photographs of *Nagaxytes erecta* Srisonchai, Enghoff & Panha gen. et sp. nov. **A–B.** Specimens from Phuphrai Thannam Resort, Thailand (♂♂, CUMZ-pxDGT00002-3). **C.** Specimen from Ban Nong Bang, Thailand (♂). **D.** Specimen from Phuphrai Thannam Resort, Thailand (♀, CUMZ-pxDGT00054).

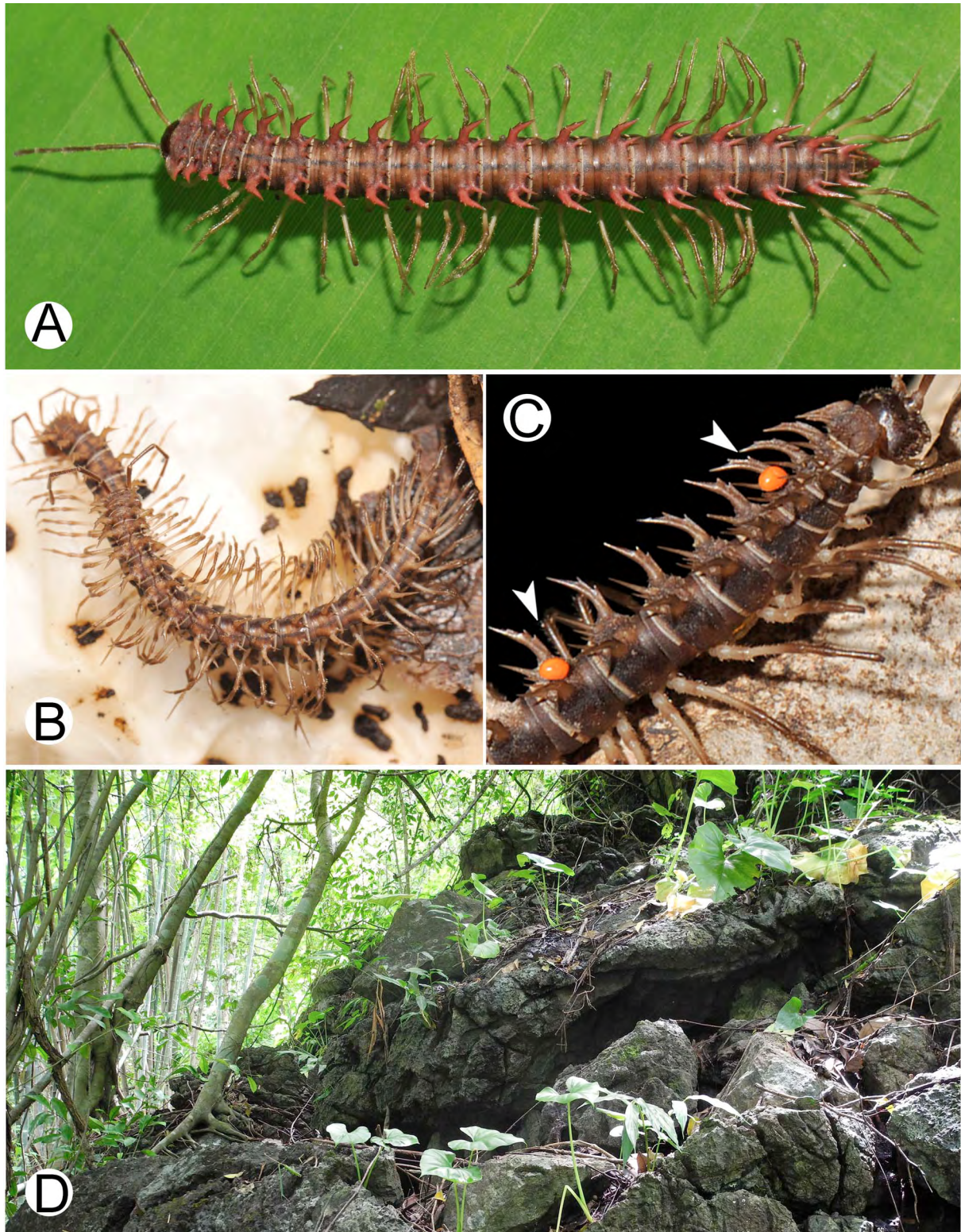


Fig. 12. Live photographs and habitat of *Nagaxytes erecta* Srisonchai, Enghoff & Panha gen. et sp. nov. **A.** Specimen from Ban Nong Bang, Thailand (♀). **B.** Mating couple. **C.** ♂ with parasitic mites. **D.** Habitat.

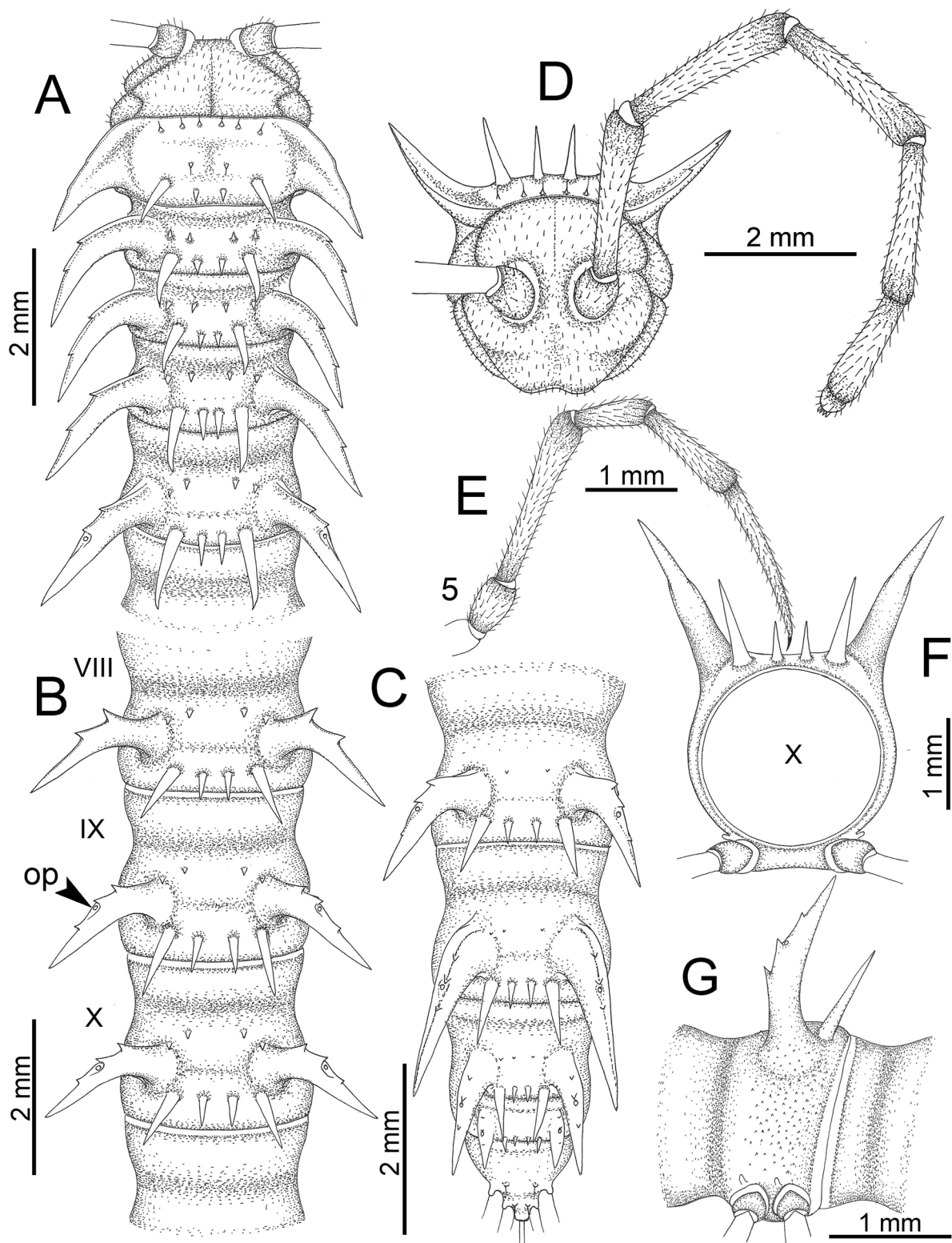


Fig. 13. *Nagaxytes erecta* Srisonchai, Enghoff & Panha gen. et sp. nov., ♂, paratype (CUMZ-pxDGT00002). **A.** Anterior body part. **B.** Body rings 8–10. **C.** Posteriormost body rings and telson. **D.** Head and antenna. **E.** ♂ leg 5 (right). **F–G.** Midbody ring.

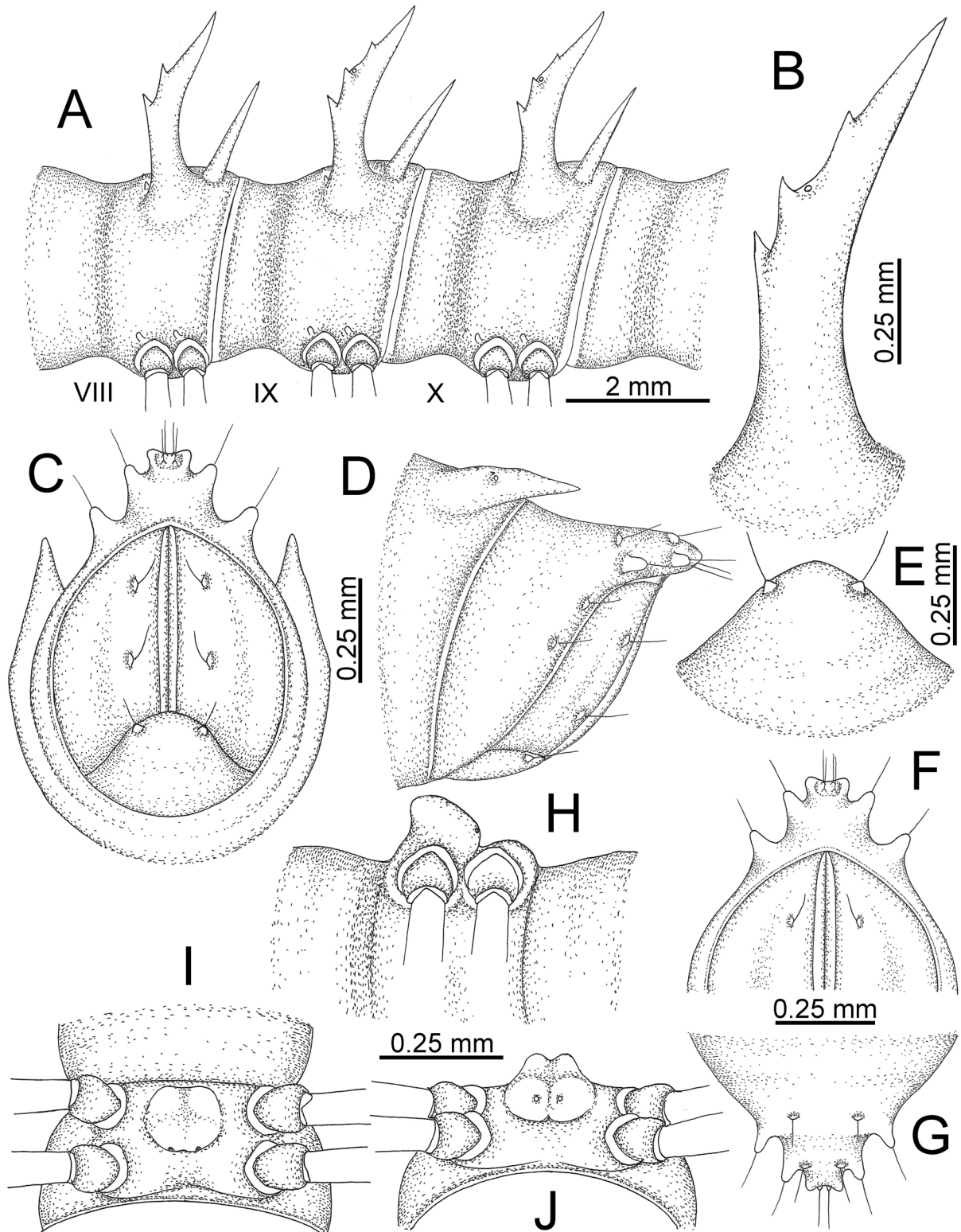


Fig. 14. *Nagaxytes erecta* Srisonchai, Enghoff & Panha gen. et sp. nov., ♂, paratype (CUMZ-pxDGT00002). A. Body rings 8–10. B. Paraterga of ring 10. C–D. Last ring and telson. E. Hypoproct. F–G. Epiproct. H–J. Sternal lobe between coxae 4.

PLEUROSTERNAL CARINAE. On body ring 2 long, crest-like; on ring 3 long ridges; on ring 4 small ridges; thereafter missing.

PARATERGA (Figs 13F–G, 14B). Directed caudolaterad on body rings 2–17, elevated at ca. 60°–70° (male) 50°–60° (female), directed increasingly caudad on body rings 18–19.

TELSON (Fig. 14C–G). Epiproct quite short; tip usually subtruncate (in some specimens slightly emarginate); lateral setiferous tubercles conspicuous, long, digitiform; apical tubercles conspicuous. Hypoproct usually subtriangular (in some specimens subtrapeziform); caudal margin subtriangular or round, with conspicuous setiferous tubercles.

STERNA (Fig. 14H–J). Cross-impressions quite deep. Sternal lobe between male coxae 4 subtrapeziform, stout; base broad; tip emarginate.

GONOPODS (Figs 15, 16). Coxa subequal in length to femur. Cannula long and slender. Telopodite quite long and slender. Prefemoral part ca. half as long as femur. Femur quite long and slender, slightly enlarged distad. Mesal sulcus conspicuous, deep, wide; lateral sulcus quite deep and wide. Postfemoral part conspicuous, short. Solenophore well-developed: lamina lateralis erect, long, thick, digitiform; tip round, directed anteriorad; lamina medialis very long; apically fringed with several small spines; tip directed mesad. Solenomere long and slender, tip directed anterolateriad.

Distribution and habitat

Nagaxytes erecta gen. et sp. nov. is known only from Kanchanaburi Province, Thailand. All specimens were collected from limestone habitats during the rainy season (July–October). Lots of specimens were usually found near human areas, where some habitats were being destroyed for construction of a temple or bureau of monks.

At Daowadueng Cave, the new species lives syntopically with *N. gracilis* gen. et sp. nov. and *Desmoxytes purpureosa* Enghoff, Sutcharit & Panha, 2007, in the same habitat. *Desmoxytes planata* was also found near the habitat of the new species at Phuphrai Thannam Resort and Wat Tha Kha-nun. We assume that *D. planata* occurs in a different microhabitat because the areas where we collected it are very strongly influenced by humans, and all specimens were seen crawling on statues and concrete.

We have only found *N. erecta* gen. et sp. nov. in a narrow area (100 km²) along the huge limestone mountain range in Sai Yok and Thong Pha Phum Districts. Therefore, we regard this species as endemic for the Thai fauna.

Remarks

There is a considerable variation in the live colouration; two colour morphs can be distinguished – brownish red and brown. All specimens from Ban Nong Bang (near Wat Pha Sukit Suwannaket) show a brownish red colour whereas specimens from the remaining localities exhibit a brown colour (except at Daowadueng Cave: both reddish brown and brown colour morphs occur in the same place, even the same habitat). A further morphological difference between these two colour morphs concerns the size of cones/spines (anterior row) on metaterga 16–19: conspicuous in the reddish brown colour morph, inconspicuous in the brown morph. However, the gonopod characters are virtually identical. A similar phenomenon is also found in *Desmoxytes cervina* in which two colour morphs share identical gonopod characters (Srisonchai *et al.* 2018). Therefore, we regard the differences in colour as interpopulational variation. An intrapopulational variation was also found in the:

- tip of epiproct: in some specimens subtruncate, in others slightly emarginate.
- shape of hypoproct: in some individuals subtriangular, in others subtrapeziform.

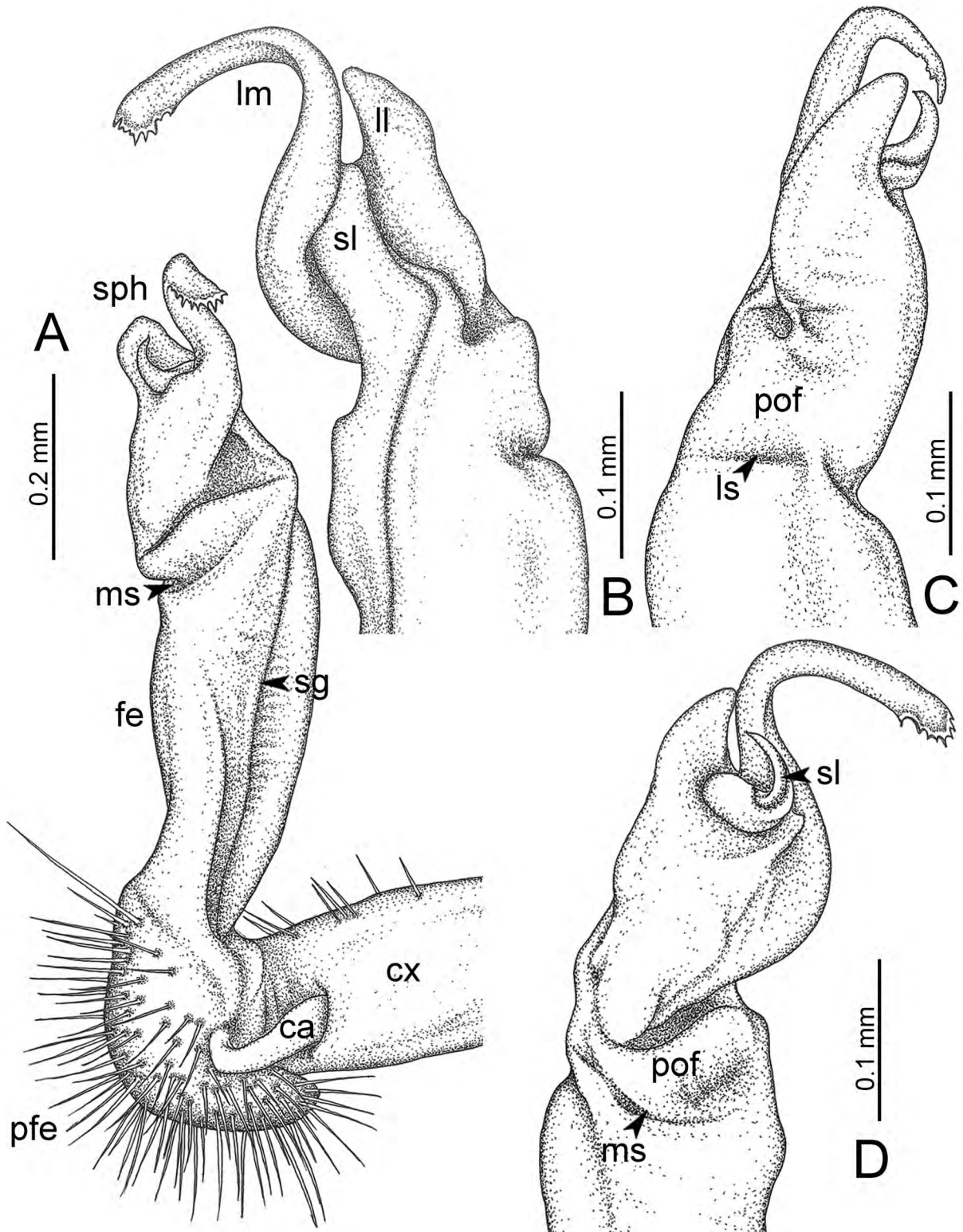


Fig. 15. *Nagaxytes erecta* Srisonchai, Enghoff & Panha gen. et sp. nov. (paratype, CUMZ-pxDGT00002), right gonopod. A. Mesal view. B. Dorsal view. C. Lateral view. D. Ventral view.

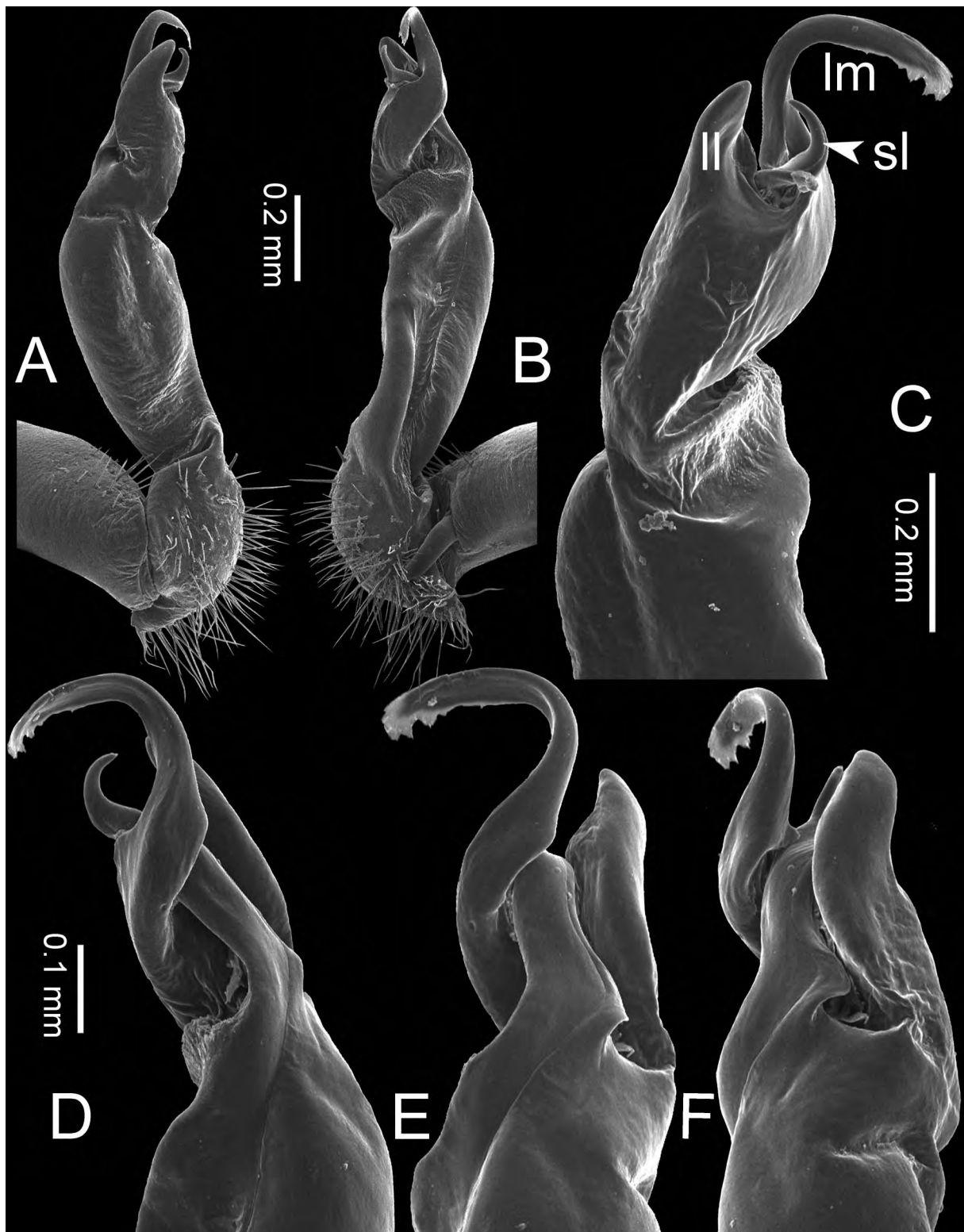


Fig. 16. *Nagaxytes erecta* Srisonchai, Enghoff & Panha gen. et sp. nov. (paratype, CUMZ-pxDGT00002), right gonopod. **A.** Lateral view. **B.** Mesal view. **C.** Ventral view. **D, F.** Subdorsal view. **E.** Dorsal view.

Some specimens of this species are infested by engorged mites (possibly of the genus *Leptus*) (Fig. 12C), as also found on *D. cervina* by Srisonchai *et al.* (2018) and *N. acantherpestes* gen. et comb. nov. as mentioned above.

Nagaxytes gracilis Srisonchai, Enghoff & Panha gen. et sp. nov.

urn:lsid:zoobank.org:act:A6CF5E48-B6AF-4FBD-A02D-D07E4DCDD605

Figs 1, 4, 5, 17–21

Diagnosis

Metaterga 4–19 with one row of 2+2 posterior spines (anterior row absent). Similar in this respect to *N. acantherpestes* gen. et comb. nov., but differs from this species by having paraterga longer; degree of elevation of paraterga higher; sternal lobe between male coxae 4 incompletely bilobed; lamina lateralis long, lamella-like, thin, slender, tip round and directed ventrad.

Etymology

The name is a Latin adjective, referring to the slender lamina lateralis of the gonopod telopodite.

Material examined

Holotype

THAILAND: ♂, Kanchanaburi Province, Sai Yok District, Daowadueng Cave, 14°28'23" N, 98°50'04" E, ca. 133 m a.s.l., 15 Aug. 2016, ASRU members leg. (CUMZ-pxDGT00090).

Paratypes

THAILAND: 7 ♂♂, 21 ♀♀, same data as for holotype (CUMZ-pxDGT00091-118); 1 ♂, 1 ♀, same data as for holotype (ZMUC 00040245).

Further specimens, not paratypes

THAILAND – Kanchanaburi Province, **Sai Yok District**: 1 ♂, 1 broken ♂, 1 broken ♂ (right gonopod lost), 5 ♀♀, Daowadueng Cave, 14°28'23" N, 98°50'04" E, ca. 133 m a.s.l., 8 Sep. 2008, ASRU members leg. (CUMZ); 2 ♂♂, 6 ♀♀, Daowadueng Cave, 14°28'23" N, 98°50'04" E, ca. 133 m a.s.l., 11 Jul. 2009, ASRU members leg. (CUMZ); 2 ♂♂, Daowadueng Cave, 14°28'23" N, 98°50'04" E, ca. 133 m a.s.l., 12 Oct. 2015, ASRU members leg. (CUMZ); 8 ♂♂, 21 ♀♀, 1 broken ♂, 1 ♂ (right gonopod lost), 1 ♂ fragment (gonopods lost), Wat Tham Phrom Lok Khao Yai, 14°12'15" N, 99°07'57" E, ca. 122 m a.s.l., 9 Jul. 2009, ASRU members leg. (CUMZ); 1 ♂, Wat Tham Phrom Lok Khao Yai, 14°12'15" N, 99°07'57" E, ca. 122 m a.s.l., 15 Aug. 2016, ASRU members leg. (CUMZ); 1 ♂, Kra Sae Cave, 14°06'05" N, 99°10'09" E, ca. 79 m a.s.l., 10 Dec. 2006, ASRU members leg. (CUMZ); 3 ♂♂, 3 broken ♂♂, 1 ♂ (right gonopod lost), 5 ♀♀, Hellfire Pass, 14°21'20" N, 98°57'09" E, ca. 216 m a.s.l., 29 Aug. 2011, ASRU members leg. (CUMZ); 2 ♂♂, 2 ♀♀, Hellfire Pass, 14°21'20" N, 98°57'09" E, ca. 216 m a.s.l., Aug. 2014, ASRU members leg. (CUMZ); 1 ♂, 1 ♀, Ban Thung Kang Yang, 14°24'17" N, 98°55'04" E, ca. 263 m a.s.l., 15 Aug. 2016, ASRU members leg. (CUMZ); 4 ♂♂, 5 ♀♀, Wat Sunantha Wanaram, 14°32'11" N, 98°49'51" E, ca. 161 m a.s.l., 17 Aug. 2016, ASRU members leg. (CUMZ); 7 ♂♂, 6 ♀♀, Wat Phuttha Vimooddhi Wanaram (Wat Tham Phu Mood), 14°18'07" N, 98°59'27" E, ca. 213 m a.s.l., 17 Aug. 2016, ASRU members leg. (CUMZ).

Description

SIZE. Length 30–33 mm (male), 35–38 mm (female); width of midbody metazona ca. 2.2 mm (male), 3.1 mm (female). Width of head < collum < body ring 2 = 3 = 4 < 5–17, thereafter body gradually tapering towards telson.

COLOUR (Fig. 17A–B). Specimens in life with body pinkish brown; paraterga vivid pink or reddish pink; collum, prozona, metaterga, surface below paraterga pinkish brown; head, antennae (except whitish distal part of antennomere 7 and antennomere 8) sterna and legs brown; a few basal podomeres whitish brown; epiproct pink. Colour in alcohol: after 3–9 years changed to pale brown; head, collum, metaterga, surface below paraterga, sterna, epiproct pale brown or whitish brown; paraterga brownish white.

COLLUM (Fig. 18A). With three transverse rows of setae/tubercles and spines, 3+3 setae/tubercles in anterior row, 1+1 setae/tubercles in intermediate row (tubercles small) and 2+2 spines in posterior row; paraterga of collum long and broad, elevated at ca. 40°–45° (male) 35°–40° (female), directed caudolaterad, with 2 conspicuous notches at lateral margin.

ANTENNAE (Fig. 18D). Moderately long and slender, reaching to body ring 5 or 6 (male) and 4 or 5 (female) when stretched dorsally.

TEGUMENT. Quite shiny. Stricture between prozona and metazona shallow, wide.

METATERGA (Fig. 18A–C). Metatergum 2 with 1(2)+1(2) anterior tubercles/cones and 2+2 posterior spines; metatergum 3 with 1+1 anterior tubercles (inconspicuous) and 2+2 posterior spines; metaterga 4–19 with 2+2 posterior spines (anterior row absent; lateral spines of posterior row in all rings very long, longer than mesal ones).

PLEUROSTERNAL CARINAE. On body ring 2 long, crest-like; on body rings 3 and 4 small ridges; thereafter missing.

PARATERGA (Figs 18F–G, 19B). Directed caudolaterad on body rings 2–18, elevated at ca. 70° (male) 60°–70° (female), directed increasingly caudad on body ring 19; notch near the tip at lateral margin of body rings 5–7, 9, 10, 12, 13, 15–18 absent on some rings in some specimens.

TELSON (Fig. 19C–G). Epiproct quite short; tip usually subtruncate (in some specimens slightly emarginate); lateral setiferous tubercles conspicuous, long, digitiform; apical tubercles conspicuous. Hypoproct subtriangular; caudal margin subtriangular, with inconspicuous setiferous tubercles.

STERNA (Fig. 19H–J). Cross-impressions quite deep. Sternal lobe between male coxae 4 incompletely bilobed; base broad; tip deeply emarginate; surface near pores swollen.

GONOPODS (Figs 4–5, 20–21). Coxa subequal in length to femur. Cannula long and slender. Telopodite quite long and slender. Prefemoral part ca. half as long as femur. Femur long and slender, slightly enlarged distally. Mesal sulcus conspicuous, deep, wide; lateral sulcus quite deep and very wide. Postfemoral part conspicuous, short. Solenophore well-developed: lamina lateralis long, lamella-like, thin, slender; tip round, directed ventrad; lamina medialis very long; slightly enlarged distally; apically fringed with several small spines; tip directed mesoventrad. Solenomere long and slender, tip directed ventrad.

Distribution and habitat

Nagaxytes gracilis gen. et sp. nov. is known only from Sai Yok District, Kanchanaburi Province. All specimens were collected on humid rocks, superficial tree roots and litter in limestone habitats. It lives in the same habitat with *D. purpuresea*, *D. golovatchi* Srisonchai, Enghoff & Panha, 2018 and *N. erecta* gen. et sp. nov. (q.v.). The new species occurs in a narrow distribution area along the huge limestone range which is entirely contained within Sai Yok District. We thus consider this species to be endemic to Kanchanaburi Province, Thailand.

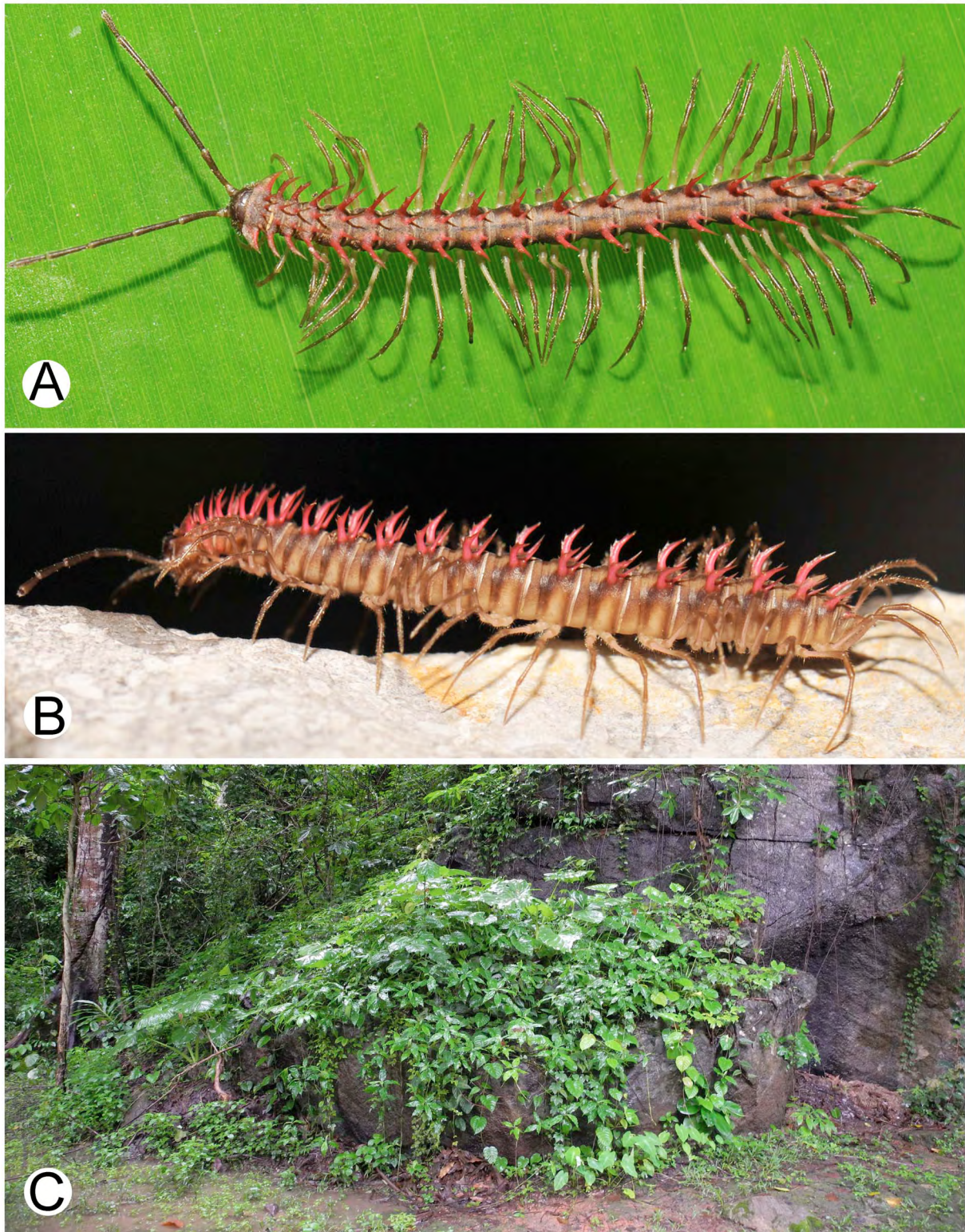


Fig. 17. Live photographs and habitat of *Nagaxytes gracilis* Srisonchai, Enghoff & Panha gen. et sp. nov. (specimens from Daowadueng Cave, Thailand). **A.** ♂, paratype (CUMZ-pxDGT00091). **B.** ♀, paratype (CUMZ-pxDGT00098). **C.** Habitat.

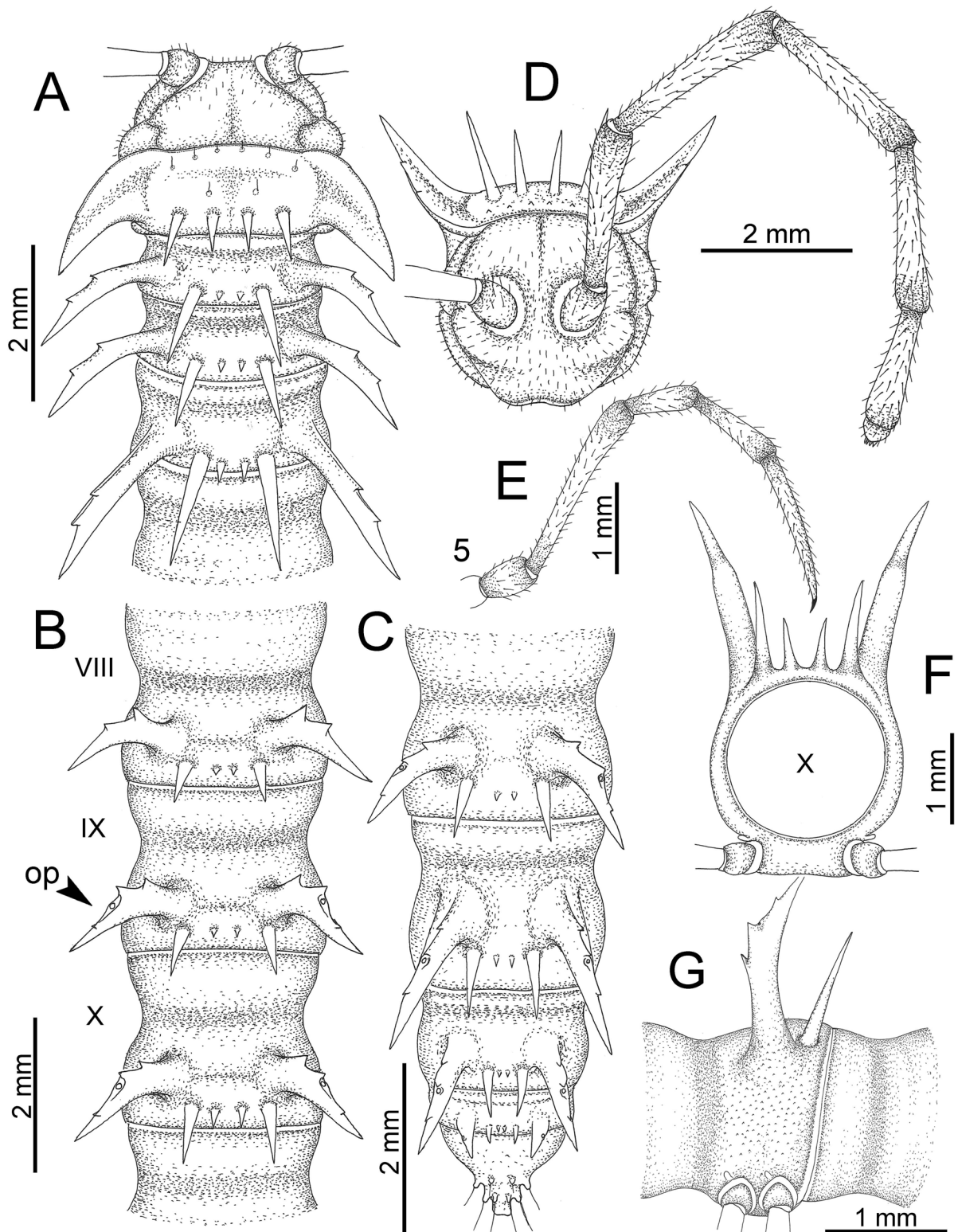


Fig. 18. *Nagaxytes gracilis* Srisonchai, Enghoff & Panha gen. et sp. nov., ♂, paratype (CUMZ-pxDGT00091). A. Anterior body part. B. Body rings 8–10. C. Posteriormost body rings and telson. D. Head and antenna. E. ♂, leg 5 (right). F–G. Midbody ring.

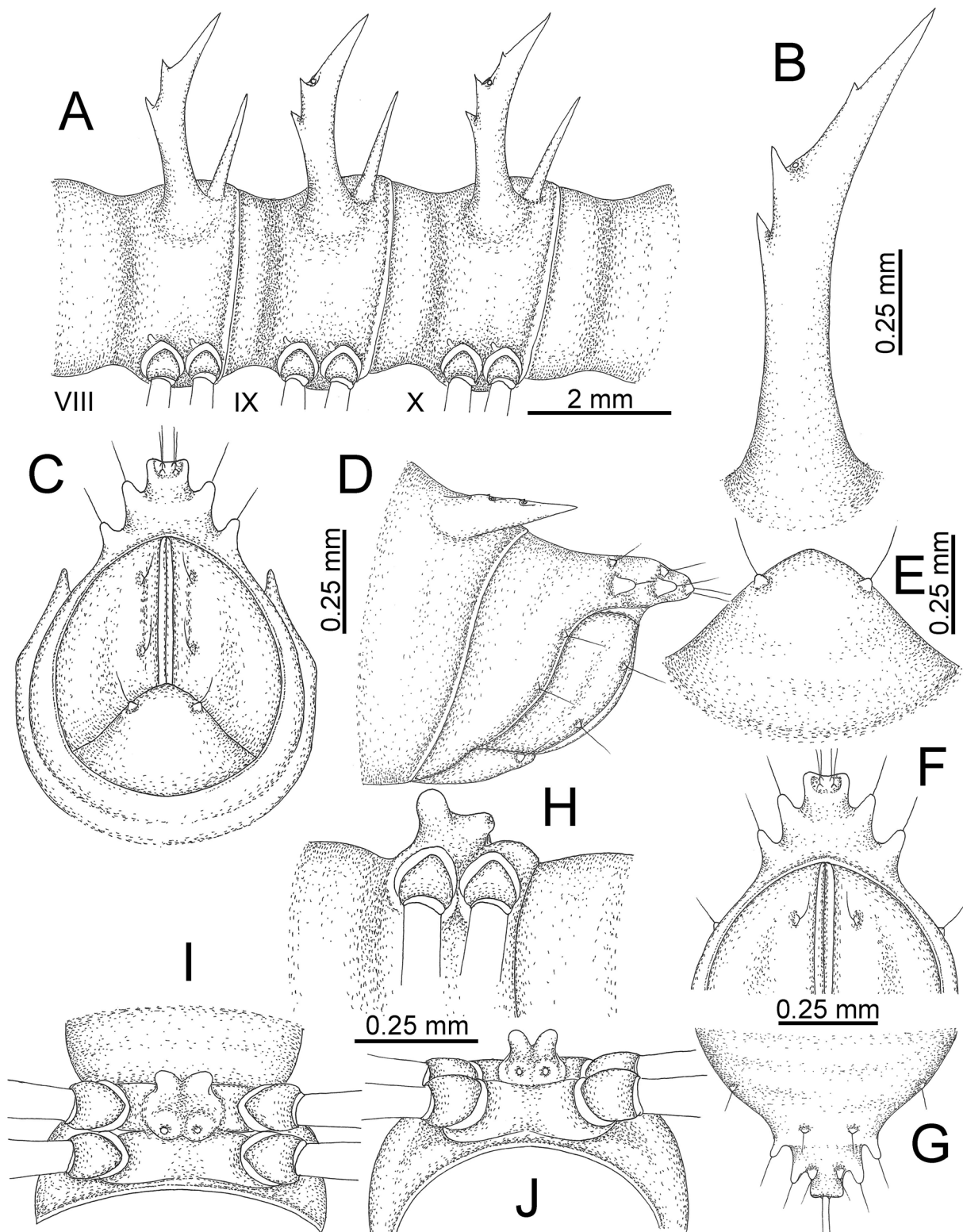


Fig. 19. *Nagaxytes gracilis* Srisonchai, Enghoff & Panha gen. et sp. nov., ♂, paratype (CUMZ-pxDGT00091). **A.** Body rings 8–10. **B.** Paraterga of ring 10. **C–D.** Last ring and telson. **E.** Hypoproct. **F–G.** Epiproct. **H–J.** Sternal lobe between coxae 4.

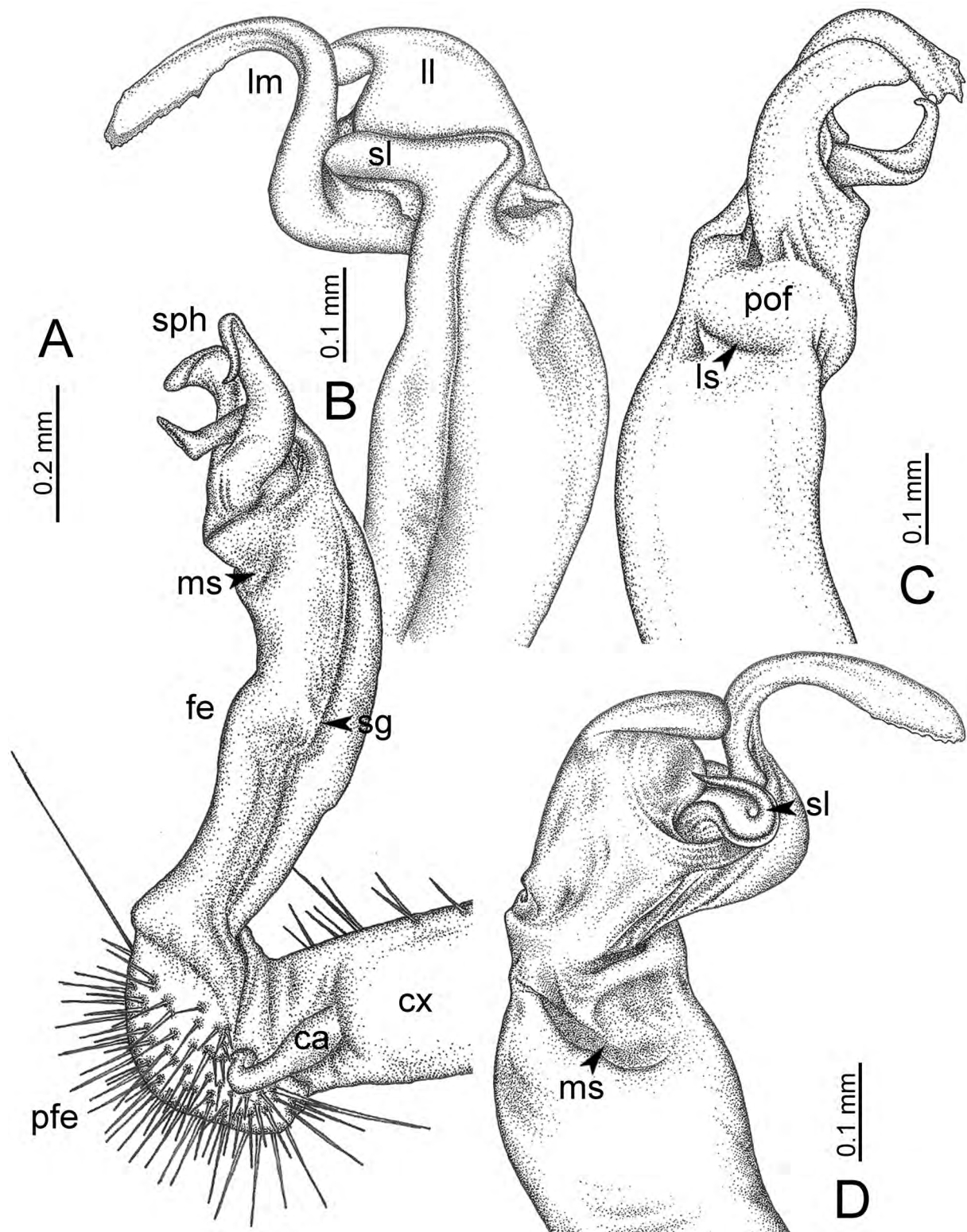


Fig. 20. *Nagaxytes gracilis* Srisonchai, Enghoff & Panha gen. et sp. nov., paratype (CUMZ-pxDGT00092), right gonopod. A. Mesal view. B. Dorsal view. C. Lateral view. D. Ventral view.

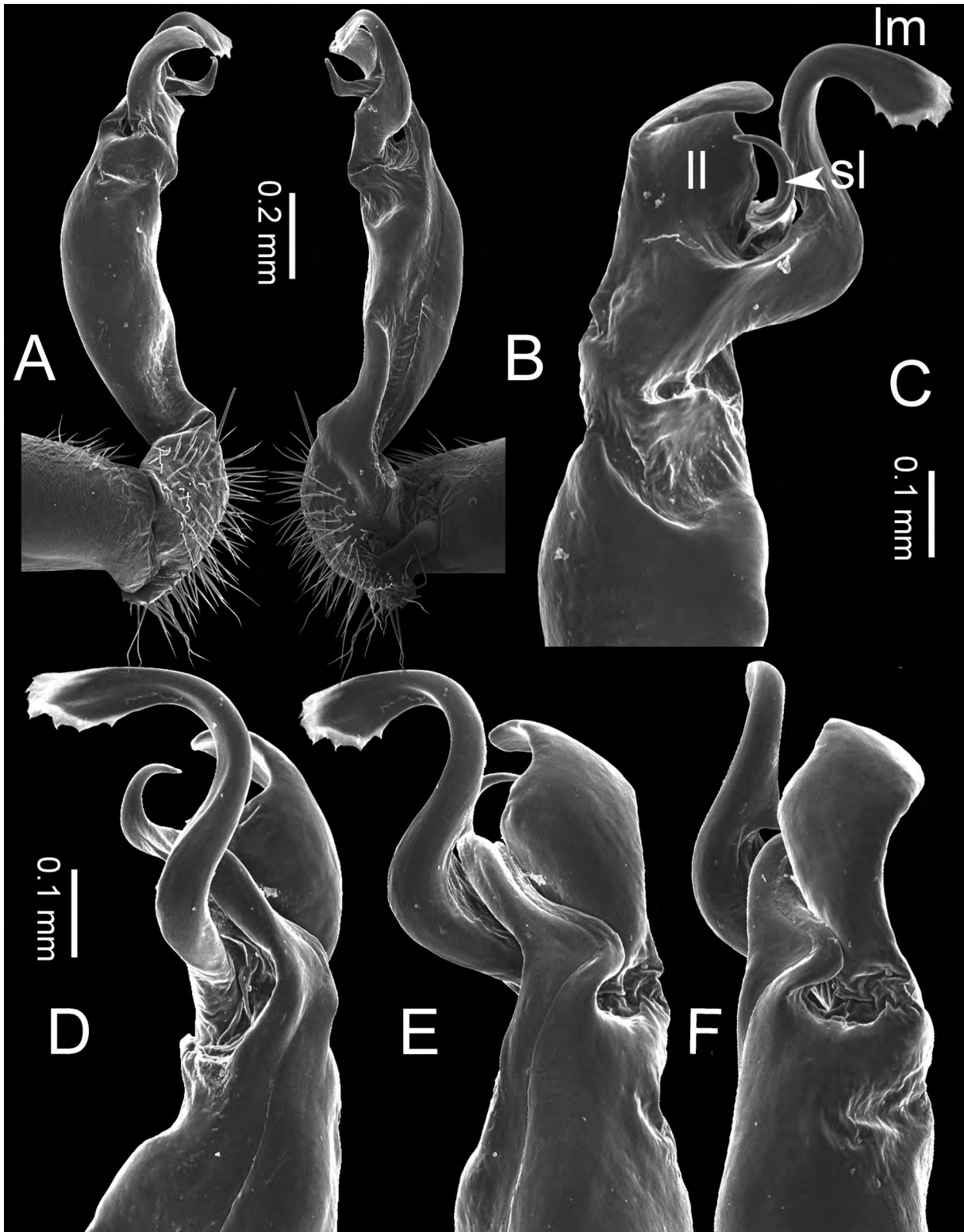


Fig. 21. *Nagaxytes gracilis* Srisonchai, Enghoff & Panha gen. et sp. nov., paratype (CUMZ-pxDGT00092), right gonopod. A. Lateral view. B. Mesal view. C. Ventral view. D, F. Subdorsal view. E. Dorsal view.

Remarks

The vivid pink paraterga are probably aposematic. *Nagaxytes gracilis* gen. et sp. nov. was noticeable in the field by the contrast of its bright pink colour to brown rocks.

There is a variability in the tip of the epiproct: in some specimens subtruncate, in others slightly emarginate.

Nagaxytes spatula Srisonchai, Enghoff & Panha gen. et sp. nov.
[urn:lsid:zoobank.org:act:6B8E3EA4-8290-4EF4-A804-FCA28BE32863](https://zoobank.org/act:6B8E3EA4-8290-4EF4-A804-FCA28BE32863)

Figs 22–26

Diagnosis

Metaterga 2–8 with two rows of spines (1+1 or 2+2 spines in anterior row, 2+2 spines in posterior row). Similar in this respect to *N. erecta* gen. et sp. nov., but differs by having: degree of elevation of paraterga higher; apical tubercles of epiproct inconspicuous; surface near lateral sulcus swollen as long ridge; lamina lateralis broad, with a long and conspicuous spatula-like lobe; lamina medialis very long, curved, apically hook-like; tip of solenomere terminating in two curved processes.

Etymology

The name is a Latin noun in apposition, referring to the spatulate lobe on the lamina lateralis.

Material examined

Holotype

THAILAND: ♂, Tak Province, Mae Sot District, Chao Por Phawo Shrine, 16°46'19" N, 98°41'11" E, ca. 688 m a.s.l., 29 Aug. 2016, ASRU members leg. (CUMZ-pxDGT00119).

Paratypes

THAILAND: 27 ♂♂, 19 ♀♀, same data as for holotype (CUMZ-pxDGT00120-165); 1 ♂, 1 ♀, same data as for holotype (ZMUC 00040246); 1 ♂, 1 ♀, same data as for holotype (ZMUM); 1 ♂, 1 ♀, same data as for holotype (NHMW); 1 ♂, 1 ♀, same data as for holotype (NHMUK).

Further specimens, not paratypes

THAILAND – Tak Province: **Mae Sot District:** 1 ♀, Chao Por Phawo Shrine, 16°46'19" N, 98°41'11" E, ca. 688 m a.s.l., 29 Jun. 2015, ASRU members leg. (CUMZ); 1 ♂, 1 ♀, Wat Tham Inthanin, 16°45'59" N, 98°40'21" E, 671 m a.s.l., 18 Oct. 2015, ASRU members leg. (CUMZ); 10 broken specs, Wat Pho Thi Khun (Wat Huai Toey), 16°45'42" N, 98°38'49" E, ca. 431 m a.s.l., 27 Jul. 2016, P. Pimvichai, P. Prasankok and N. Nantararat leg. (CUMZ); 3 ♂♂, 6 ♀♀, Wat Pho Thi Khun (Wat Huai Toey), 16°45'42" N, 98°38'49" E, ca. 431 m a.s.l., 29 Aug. 2016, ASRU members leg. (CUMZ). – **Umphang District:** 1 ♂, 1 ♂ (left gonopod lost), 4 ♀♀, Tham Takhobi (Takhobi Cave), 16°03'15" N, 98°49'14" E, ca. 510 m a.s.l., 5 Jul. 2009, ASRU members leg. (CUMZ); 1 ♂, 1 ♀, Tham Takhobi (Takhobi Cave), 16°03'15" N, 98°49'14" E, ca. 510 m a.s.l., 1 Jul. 2015, ASRU members leg. (CUMZ); 4 ♂♂, 6 ♀♀, many broken specs, Doi Hua Mod, 15°57'30" N, 98°51'13" E, ca. 894 m a.s.l., 5 Jul. 2009, ASRU members leg. (CUMZ); 1 ♂, 1 ♀, 1 juvenile, Doi Hua Mod, 15°57'30" N, 98°51'13" E, ca. 894 m a.s.l., 1 Jul. 2015, ASRU members leg. (CUMZ).

Description

SIZE. Length 22–26 mm (male), 24–28 mm (female); width of midbody metazona ca. 2.0 mm (male), 2.8 mm (female). Width of head < collum = body ring 2 = 3 = 4 < 5–17, thereafter body gradually tapering towards telson.

COLOUR (Fig. 22A–C). Specimens in life with body usually reddish brown (some specimens brown); prozona, metaterga, surface below paraterga and sterna reddish brown; antennae brown to dark brown (except whitish distal part of antennomere 7 and antennomere 8); head, paraterga, epiproct and leg brown; a few basal podomeres pale brown. Colour in alcohol: after 3–10 years changed to pale brown; head, antennae, collum, metaterga, surface below paraterga, sterna, epiproct, legs pale brown or whitish brown; paraterga brownish white.

COLLUM (Fig. 23A). With three transverse rows of setiferous tubercles and spines, 3+3 tubercles in anterior row, 1+1 tubercles in intermediate row and 2+2 spines in posterior row; paraterga of collum long and broad, elevated at ca. 25°–35° (male) 20°–30° (female), directed caudolaterad, with two conspicuous notches at lateral margin.

ANTENNAE (Fig. 23D). Very long and slender, reaching to body ring 6 or 7 (male) and 5 or 6 (female) when stretched dorsally.

TEGUMENT. Quite dull. Stricture between prozona and metazona quite deep, wide.

METATERGA (Fig. 23A–C). Male – metaterga 2–8 with 2(1)+2(1) anterior spines and 2+2 posterior spines (anterior spines small and sometimes inconspicuous; posterior spines longer and larger than anterior ones; lateral spines of posterior row very long); metaterga 9–19 with ?1+?1 anterior small tubercles and 2+2 posterior spines (lateral spines of posterior row very long). Female – metaterga 2–10 with 2+2 anterior spines and 2+2 posterior spines (posterior spines longer and larger than anterior ones; lateral spines of posterior row very long); metaterga 11–18 with 1+1 anterior spines and 2+2 posterior spines (lateral spines of posterior row very long); metatergum 19 with ?1+?1 anterior small tubercles and 2+2 posterior spines.

PLEUROSTERNAL CARINAE. On body ring 2 long, crest-like; on ring 3 long ridges; on ring 4 small ridges; thereafter missing.

PARATERGA (Figs 23F–G, 24B). Directed caudolaterad on body rings 2–18, elevated at ca. 50°–60° (male) 45°–50° (female), directed increasingly caudad on body ring 19.

TELSON (Fig. 24C–G). Epiproct quite short; tip subtruncate; lateral setiferous tubercles conspicuous, long, digitiform; apical tubercles inconspicuous. Hypoproct subtriangular, short and broad; caudal margin round, with conspicuous setiferous tubercles.

STERNA (Fig. 24H–J). Cross-impressions shallow. Sternal lobe between male coxae 4 stout; base broad; tip deeply emarginate to incompletely bilobed.

GONOPODS (Figs 25, 26). Coxa shorter than femur. Cannula quite short and stout. Telopodite quite short and stout. Prefemoral part subequal in length to femur. Femur quite stout, slightly enlarged distad. Mesal sulcus conspicuous, deep, wide; lateral sulcus quite shallow and wide, surface near lateral sulcus swollen as long ridge. Postfemoral part conspicuous, wide, laterally demarcated from femur by a long ridge. Solenophore well-developed: lamina lateralis broad; with a long, flattened, conspicuous spatulate lobe, apically round, directed antieriad (Figs 25D, 26C); lamina medialis very long; curved; apically hook-like. Solenomere long, tip terminating in two curved processes.

Distribution and habitat

Known only from Tak Province. Almost all specimens were seen crawling on rocks, some on leaf litter in limestone habitats. Some juveniles were collected from the leaf litter (probably in moulting chambers). In the field, the specimens blended perfectly with brown rocks and leaf litter.

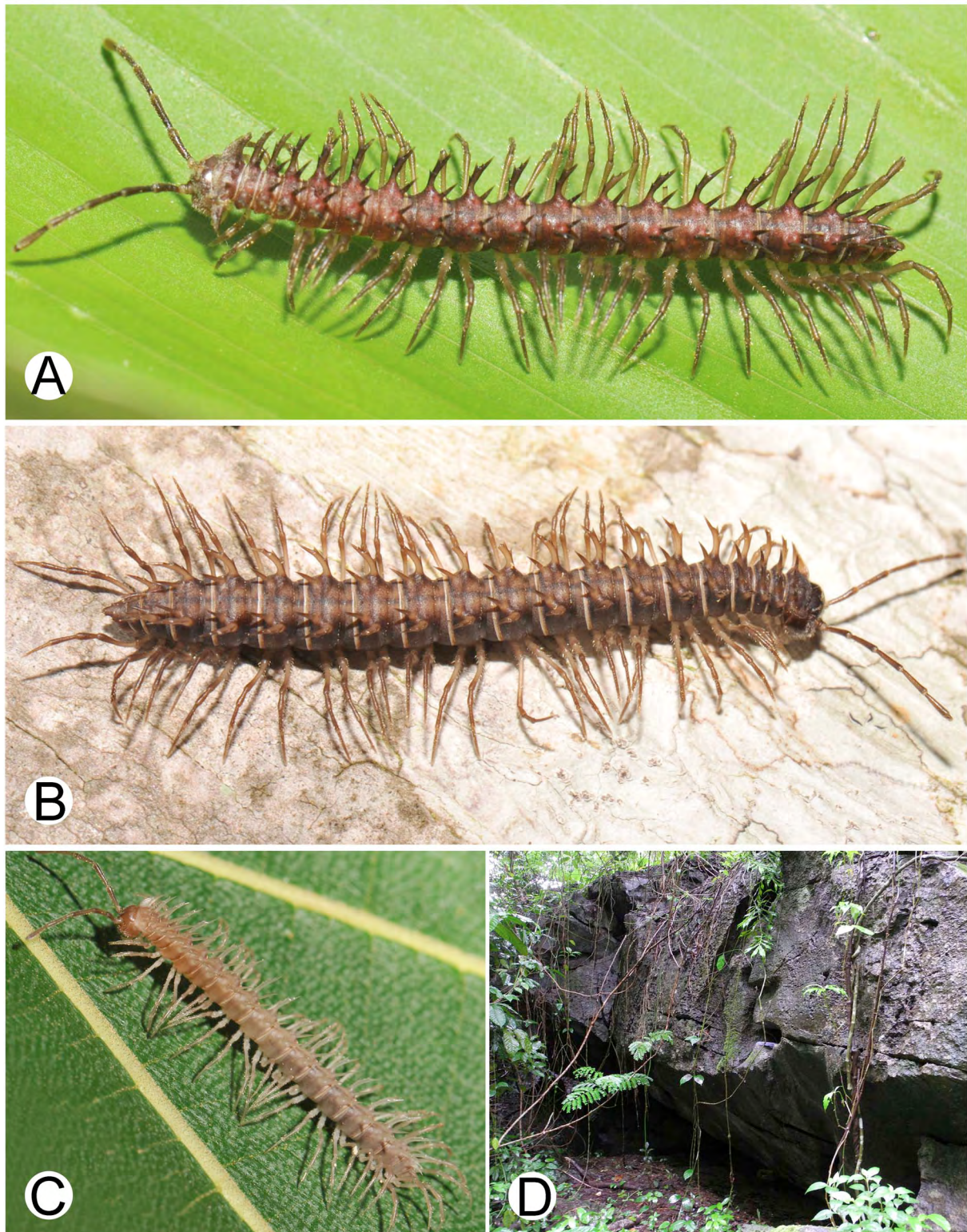


Fig. 22. Live photographs and habitat of *Nagaxytes spatula* Srisonchai, Enghoff & Panha gen. et sp. nov. (specimens from Chao Por Phawo Shrine, Thailand). **A.** ♂, paratype (CUMZ-pxDGT00120). **B.** ♀, paratype (CUMZ-pxDGT00147). **C.** ♂, paratype (CUMZ-pxDGT00146), newly moulted adult. **D.** Habitat.

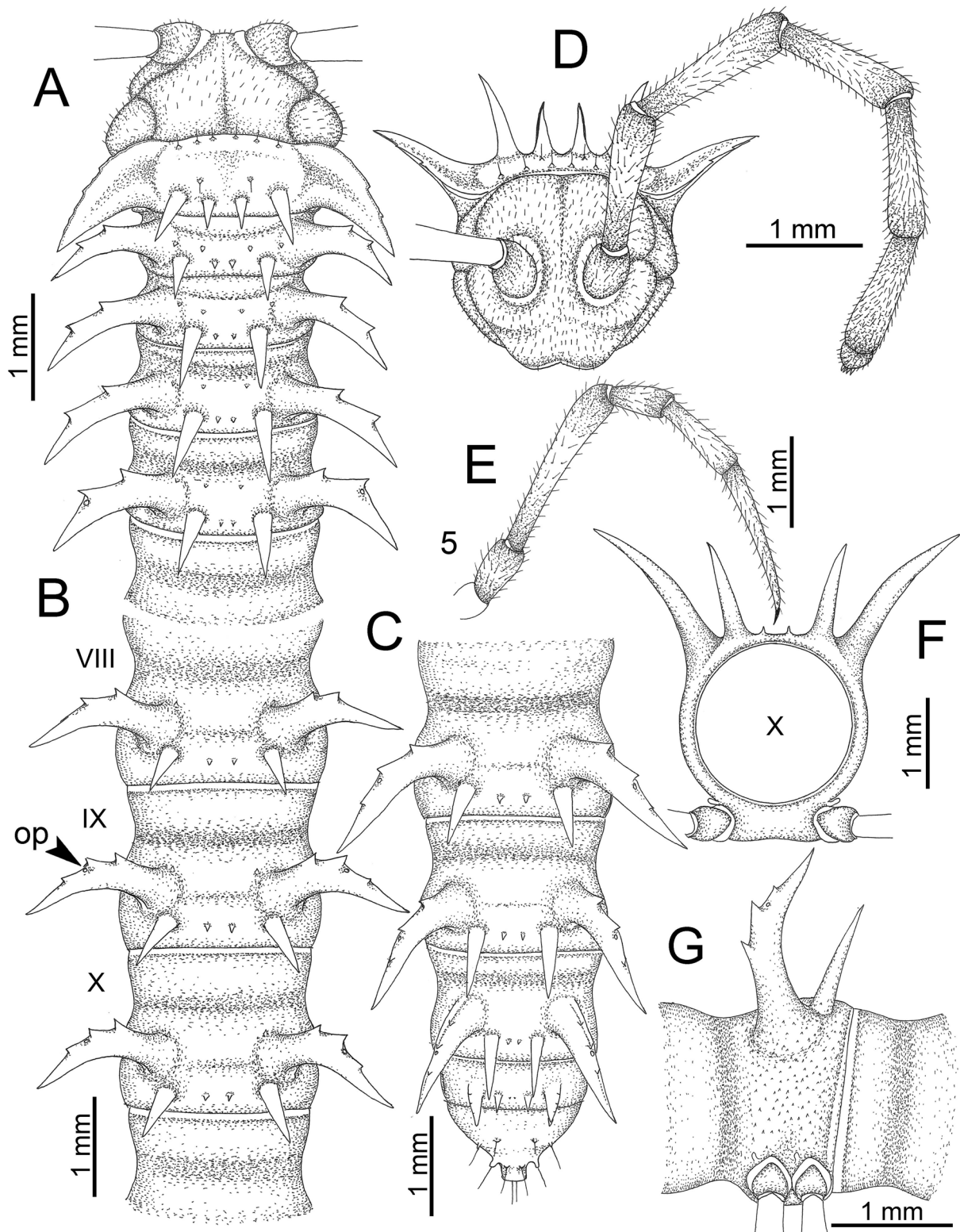


Fig. 23. *Nagaxytes spatula* Srisonchai, Enghoff & Panha gen. et sp. nov., ♂, paratype (CUMZ-pxDGT00120). **A.** Anterior body part. **B.** Body rings 8–10. **C.** Posteriormost body rings and telson. **D.** Head and antenna. **E.** ♂, leg 5 (right). **F–G.** Midbody ring.

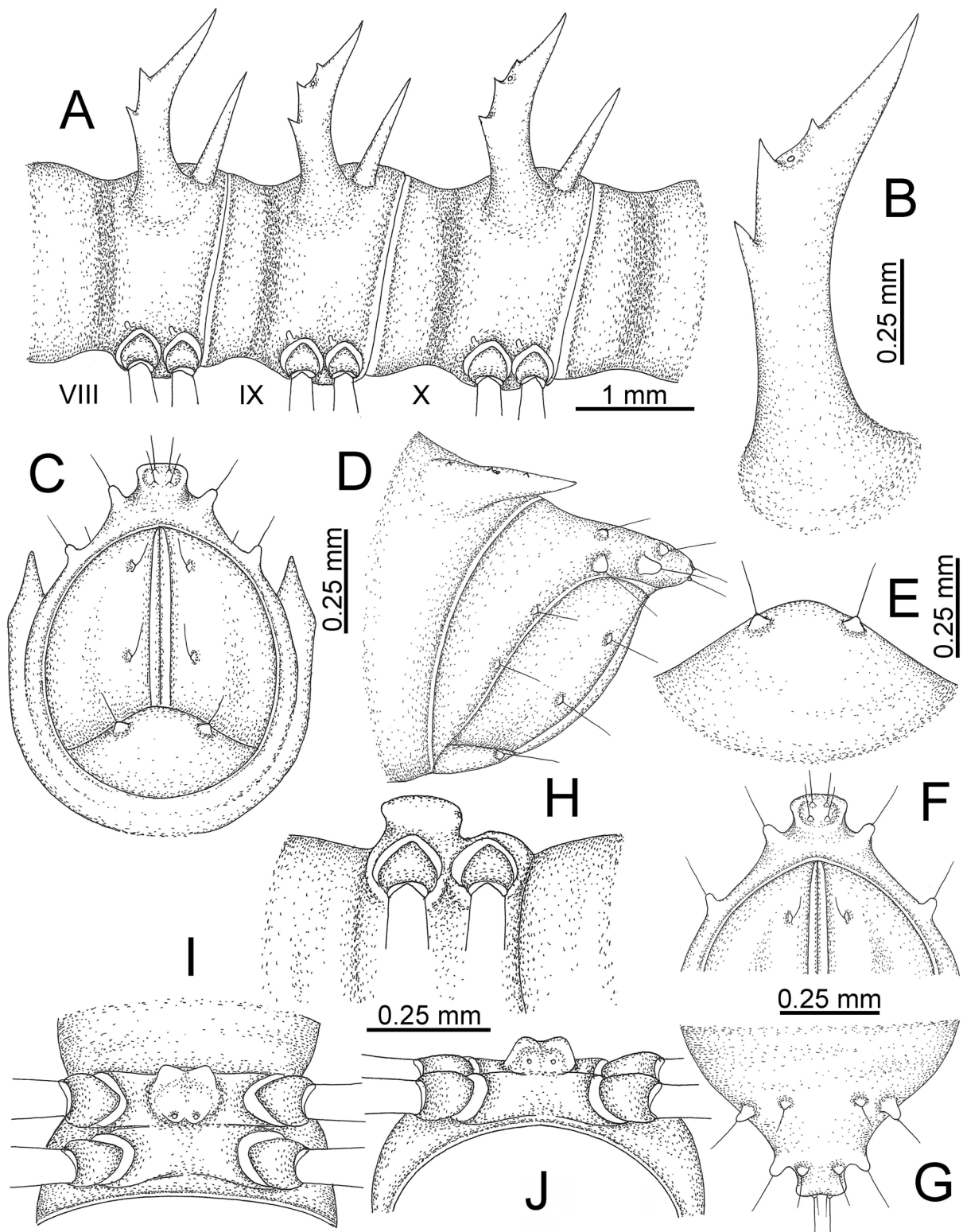


Fig. 24. *Nagaxytes spatula* Srisonchai, Enghoff & Panha gen. et sp. nov., ♂, paratype (CUMZ-pxDGT00120). **A.** Body rings 8–10. **B.** Paraterga of ring 10. **C–D.** Last ring and telson. **E.** Hypoproct. **F–G.** Epiproct. **H–J.** Sternal lobe between coxae 4.

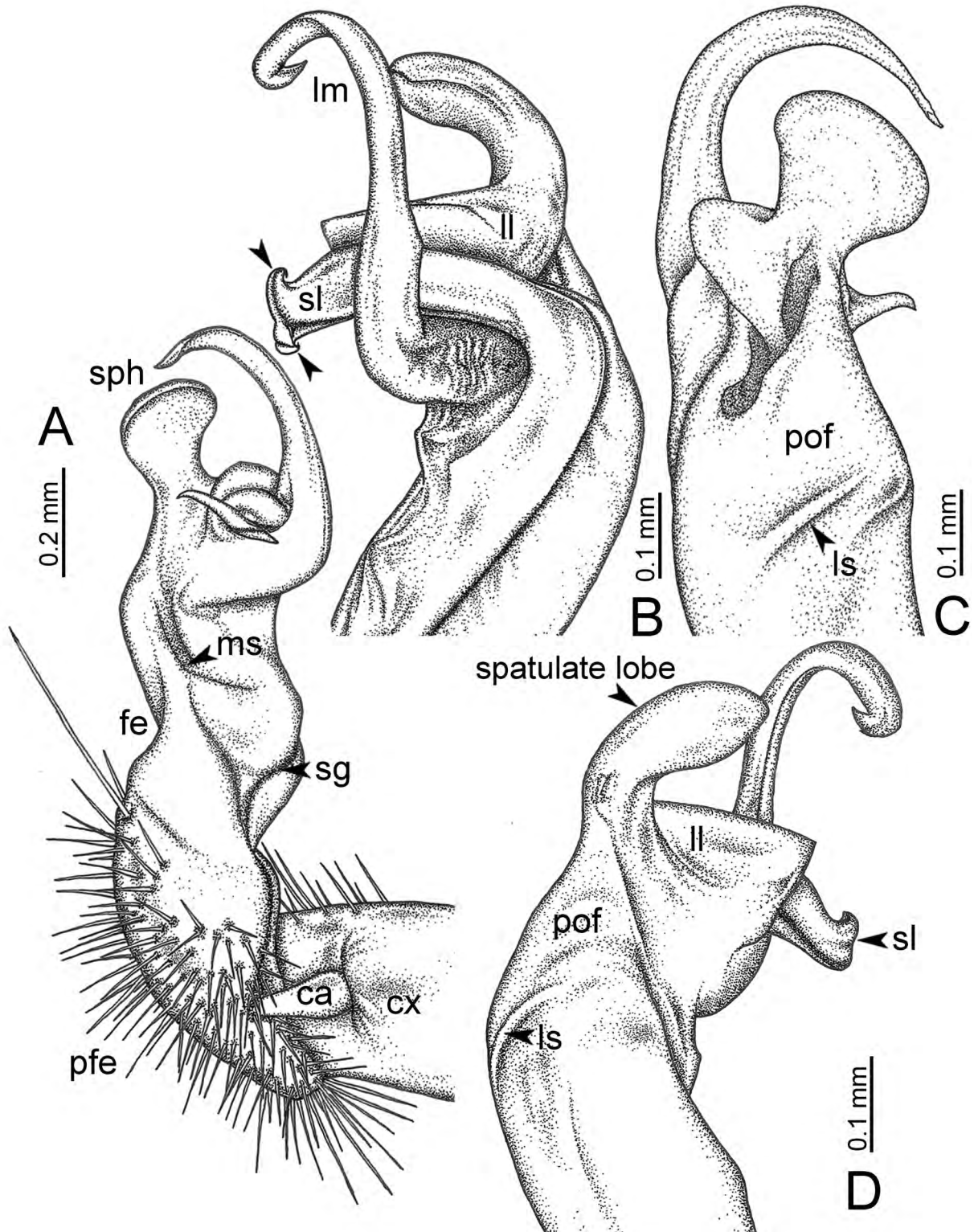


Fig. 25. *Nagaxytes spatula* Srisonchai, Enghoff & Panha gen. et sp. nov., paratype (CUMZ-pxDGT00121), right gonopod. **A.** Mesal view. **B.** Dorsal view (arrowheads = tip of solenomere terminating in two curved processes). **C.** Lateral view. **D.** Ventral view.

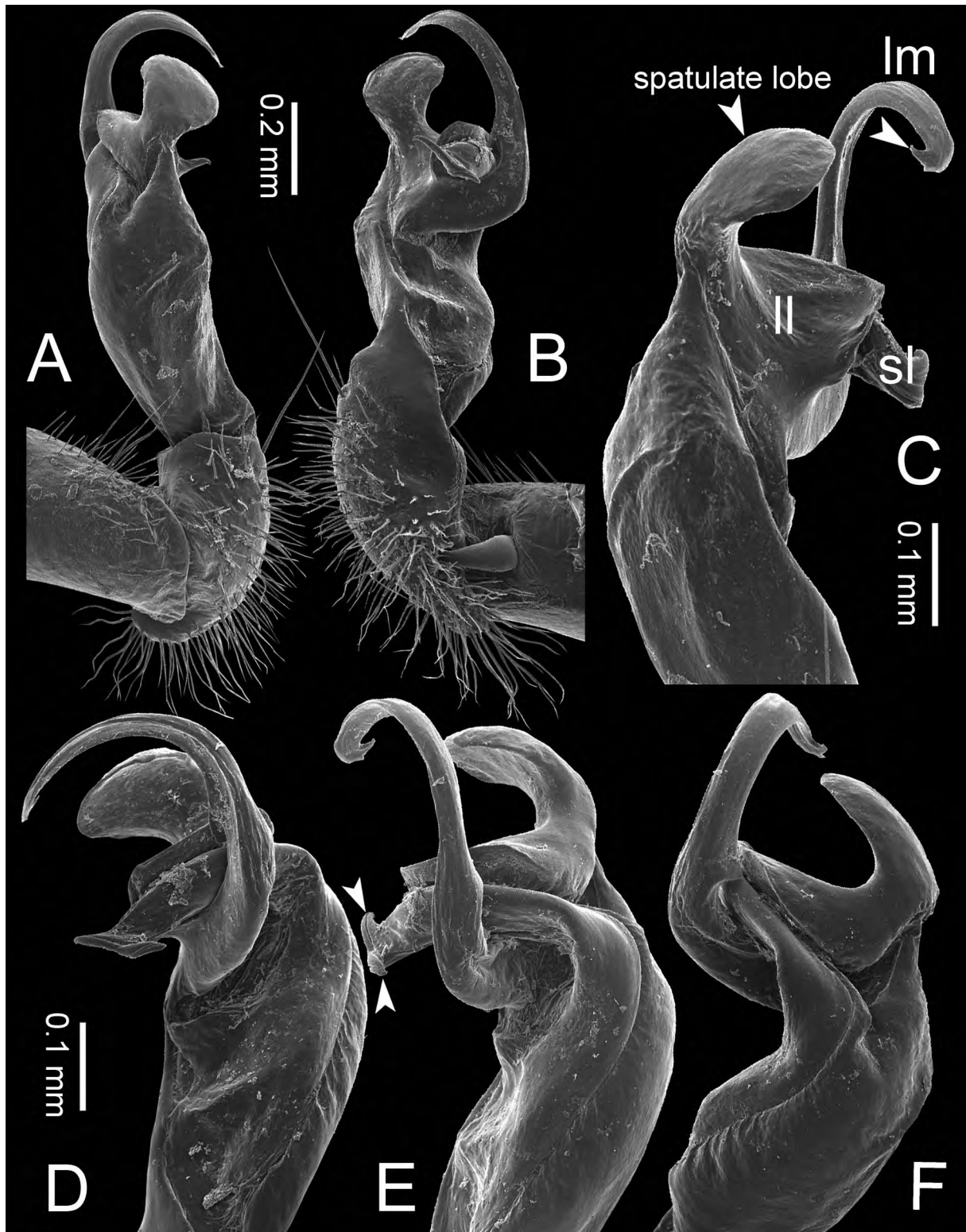


Fig. 26. *Nagaxytes spatula* Srisonchai, Enghoff & Panha gen. et sp. nov., paratype (CUMZ-pxDGT00121), right gonopod. **A.** Lateral view. **B.** Mesal view. **C.** Ventral view (arrowhead = hook-like tip). **D, F.** Subdorsal view. **E.** Dorsal view (arrowheads = tip of solenomere terminating in two curved processes).

The type locality for this species is situated beside road no. 12 (Tak–Mae Sot) near Khun Phawo National Park. We noticed that the forest beside the road is being destroyed for road construction, some parts of the limestone forest are being cut down.

For the time being, only five recorded locations are reported in the quite narrow distribution range of this species. After several intensive surveys we consider *N. spatula* gen. et sp. nov. to be endemic to Tak Province, Thailand.

Remarks

We divide this species into two main populations, each restricted to a separate limestone areas:

- North populations: Chao Por Phawo Shrine, Wat Tham Inthanin and Wat Pho Thi Khun (Wat Huai Toey).
- South populations: Tham Takhobi (Takhobi Cave) and Doi Hua Mod.

Specimens of the North populations (24–26 mm in male, 26–28 mm in female) seem to be longer than those of the South populations (22–24 mm in male, 24–25 mm in female). However, other morphological characteristics, especially gonopod characters, are identical.

Discussion

On the basis of our morphological study and a preliminary DNA sequence analysis (work in progress), the ‘*acantherpastes*’ group as defined by Srisonchai *et al.* (2018) is here described as a new genus which includes ‘*Desmoxytes*’ *acantherpastes* and three new species. The new genus *Nagaxytes* gen. nov. is well-characterised by having subspiniiform paraterga, unmodified male femora, as well as a curved and long lamina medialis. Each of the four species can be easily distinguished from its congeners by distinctive gonopod characters, especially the shape of the lamina lateralis in combination with other morphological characters.

Nagaxytes erecta gen. et sp. nov. includes two colour morphs: brownish red and brown. Moreover, the size of tubercles/cones/spines (anterior row) on metaterga 16–19 also differs between the two colour morphs: anterior row of tubercles/cones/spines conspicuous in the brownish red morph, inconspicuous in the brown morph. However, other morphological characters are clearly identical, especially gonopod characters: lamina lateralis long, thick, digitiform (Figs 14, 17). Interestingly, the two morphs mainly occur allopatrically, although at Daowadueng Cave and Wat Sunantha Wanaram, they were found syntopically in the same habitat. This case is similar to that of *Desmoxytes cervina*: similarity in several morphological characters, but differences in colour between two allopatric and/or sympatric populations (Srisonchai *et al.* 2018). We hope that our molecular phylogeny work combined with morphological studies will shed more light on relationships within populations, within species, within the genus *Nagaxytes* gen. nov., as well as among its closely related genera.

Nagaxytes erecta gen. et sp. nov. has been found in partial sympatry with *N. gracilis* gen. et sp. nov. at Daowadueng Cave and Wat Sunantha Wanaram in Kanchanaburi Province. Both species show a similar pattern of gonopod shape and share a long lamina lateralis (e.g., Figs 15D, 21D), yet they are not identical. The differences in shape of the sternal lobe between male coxae 4 and the pattern of row of spines on metaterga support regarding them as different taxa. Although *N. erecta* gen. et sp. nov. and *N. gracilis* gen. et sp. nov. have been found to be syntopic, even collected from the same habitat, the details of their microhabitats have not yet been observed and they may not co-occur in a strict sense.

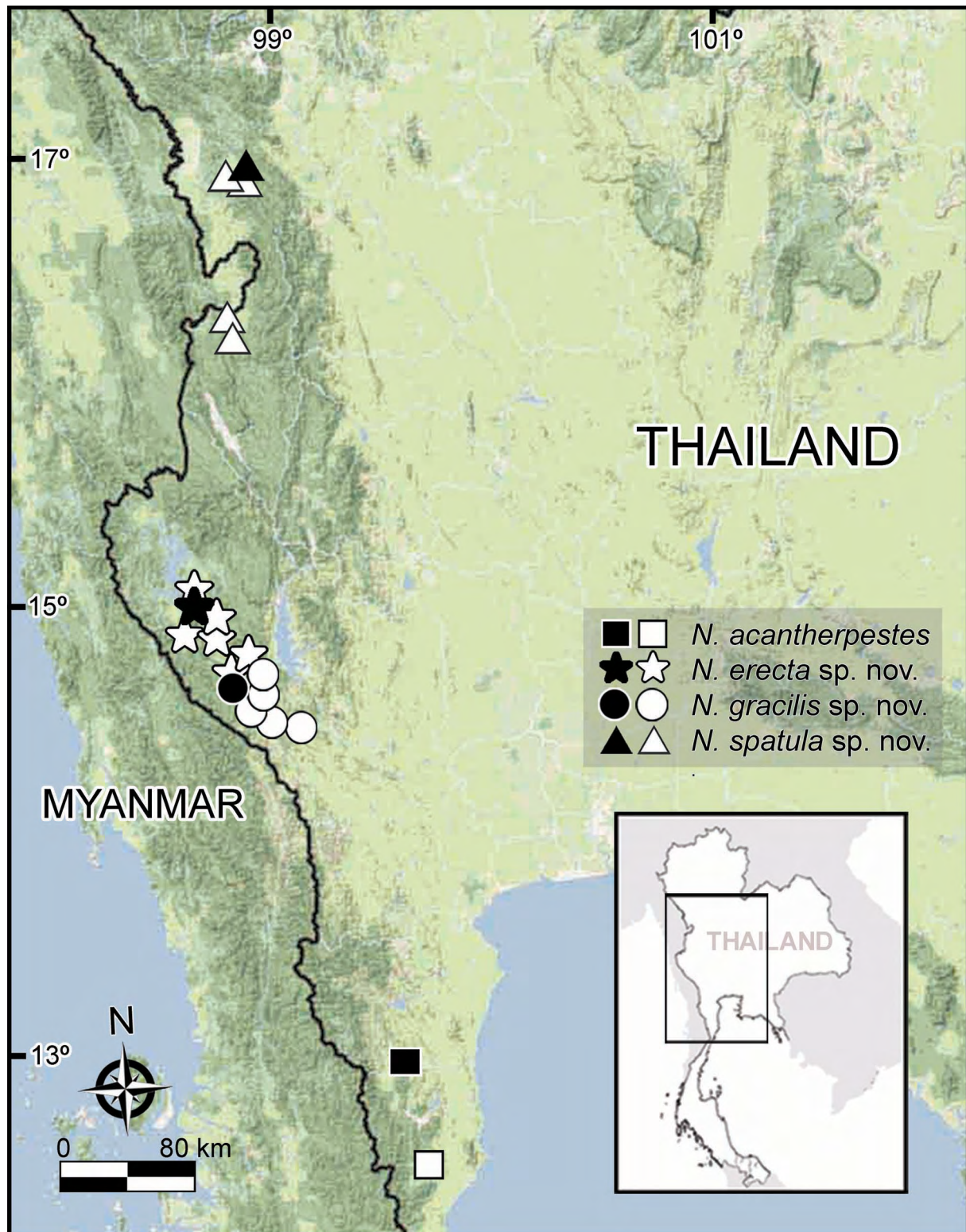


Fig. 27. Known distribution of all species of *Nagaxytes* Srisonchai, Enghoff & Panha gen. nov. (black symbol = type locality, white symbol = other localities).

During the field surveys, we found associations of mites with two species of *Nagaxytes* gen. nov.: *N. acantherpestes* gen. et comb. nov. and *N. erecta* gen. et sp. nov. The mites probably belong to the genus *Leptus* Latreille, 1796 (Southcott 1992). As in the association between parasitic mites and millipedes of the genus *Desmoxytes* reported by Srisonchai *et al.* (2018), it seems likely that the mites use their hosts for nourishment and dispersal purposes, as in other mite-millipede associations (Kethley 1978; Swafford & Bond 2010).

The new species described here are further examples of the peculiar dragon millipedes. Their long subspiniiform paraterga may provide protection against predators and possibly enhance the spreading of their defense fluid (Shear 2015; Liu *et al.* 2017). In addition, one of the new species, *N. gracilis* gen. et sp. nov., is spectacularly aposematic, like several dragon millipedes in the genus *Desmoxytes* (Enghoff *et al.* 2007; Srisonchai *et al.* 2018).

Based on our surveys and observations, all species of *Nagaxytes* gen. nov. have narrow distribution ranges within limestone habitats (Fig. 27). Therefore, we regard all species of *Nagaxytes* gen. nov. as endemic to the Thai fauna. We would not be surprised if so far unsurveyed limestone areas will yield more new species of this peculiar genus.

Acknowledgements

This research was funded by a grant from the Thailand Research Fund, the TRF Senior Research Scholar (2015–2018), RTA 5880002 to SP and from center of excellence on Biodiversity (BDC-PG2-160011). RS's visit for one year to the Natural History Museum of Denmark, University of Copenhagen, was supported by a grant from Human Resource Development in Science Project (Science Achievement Scholarship of Thailand (SAST)) and an internal grant from the Natural History Museum of Denmark. We are particularly grateful to the Plant Genetic Conservation Project under the Initiative of Her Royal Highness Maha Chakri Sirindhorn and Center of Excellence on Biodiversity for permission and support in access, and for enabling field trips to several restricted/remote areas. This work would not have been possible at all without the impressive collections and great encouragements made by members of Animal Systematic Research Unit (ASRU). Our sincere thanks are due to the reviewers including S. I. Golovatch for their comments and valuable advice. Special thanks go to Ms T. Krutchen for teaching the drawing skills and P. Kriatprapai for the watercolour.

References

- Decker P. 2010. Contributions to the myriapod fauna of Thailand – New records of millipedes and centipedes from Thailand (Myriapoda: Diplopoda, Chilopoda). *Schubartiana* 4: 23–34. Available from http://schubartiana.de/issues/pdf/vol4/Decker-2010-Myriapod_fauna_of_Thailand.pdf [accessed 22 Aug. 2018].
- Enghoff H. 2005. The millipedes of Thailand (Diplopoda). *Steenstrupia* 29 (1): 87–103. Available from <http://www.zmuc.dk/commonweb/JOURNALS/PDF/Vol29-1/Enghoff.pdf> [accessed 22 Aug. 2018].
- Enghoff H., Sutcharit C. & Panha S. 2007. The shocking pink dragon millipede, *Desmoxytes purpurosea*, a colourful new species from Thailand (Diplopoda: Polydesmida: Paradoxosomatidae). *Zootaxa* 1563: 31–36.
- Golovatch S.I. & Enghoff H. 1994. Review of the dragon millipedes, genus *Desmoxytes* Chamberlin, 1923 (Diplopoda, Polydesmida, Paradoxosomatidae). *Steenstrupia* 20 (2): 45–71.
- Jeekel C.A.W. 1964. Two new species of *Pratinus* Attems, with taxonomic notes on the genus and a redescription of its type-species (Diplopoda, Polydesmida). *Beaufortia* 11 (137): 61–73. Available from <http://www.repository.naturalis.nl/document/548475> [accessed 22 Aug. 2018].

- Jeekel C.A.W. 1980. The generic allocation of some little-known Paradoxosomatidae from South-East Asia (Diplopoda, Polydesmida). *Revue suisse de Zoologie* 87 (3): 651–670. Available from <https://biodiversitylibrary.org/page/41420961> [accessed 22 Aug. 2018].
- Jeekel C.A.W. 2003. African Paradoxosomatidae, 1: Genus *Eviulisoma* Silvestri (Diplopoda, Polydesmida). *Myriapod Memoranda* 6: 46–88.
- Kethley J.B. 1978. *Narceolaelaps* n. g. (Acari: Laelapidae) with four new species parasitizing spiroboloid millipedes. *International Journal of Acarology* 4: 195–210. <https://doi.org/10.1080/01647957808683117>
- Liu W., Golovatch S., Wesener T. & Tian M. 2017. Convergent evolution of unique morphological adaptations to a subterranean environment in cave millipedes (Diplopoda). *PLoS ONE* 12 (2): e0170717. <https://doi.org/10.1371/journal.pone.0170717>
- Nguyen D.A. & Sierwald P. 2013. A worldwide catalog of the family Paradoxosomatidae Daday, 1889 (Diplopoda: Polydesmida). *Check List* 9 (6): 1132–1353. <https://doi.org/10.15560/9.6.1132>
- Shear W.A. 2015. The chemical defenses of millipedes (Diplopoda): Biochemistry, physiology and ecology. *Biochemical Systematics and Ecology* 61: 78–117. <https://doi.org/10.1016/j.bse.2015.04.033>
- Southcott R.V. 1992. Revision of the larvae of *Leptus* Latreille (Acarina: Erythraeidae) of Europe and North America, with descriptions of post-larval instars. *Zoological Journal of the Linnean Society* 105 (1): 1–153. <https://doi.org/10.1111/j.1096-3642.1992.tb01228.x>
- Srisonchai R., Enghoff H., Likhitrakarn N. & Panha S. 2016. Four colorful new species of dragon millipedes, genus *Desmoxytes* Chamberlin, 1923, from northern Thailand (Diplopoda: Polydesmida: Paradoxosomatidae). *Zootaxa* 4710 (1): 93–113. <https://doi.org/10.11646/zootaxa.4170.1.4>
- Srisonchai R., Enghoff H., Likhitrakarn N. & Panha S. 2018. A revision of dragon millipedes I: genus *Desmoxytes* Chamberlin, 1923, with the description of eight new species (Diplopoda, Polydesmida, Paradoxosomatidae). *ZooKeys* 761: 1–177. <https://doi.org/10.3897/zookeys.761.24214>
- Swafford L. & Bond J.E. 2010. Failure to cospeciate: an unsorted tale of millipedes and mites. *Biological Journal of the Linnean Society* 101 (2): 272–287. <https://doi.org/10.1111/j.1095-8312.2010.01499.x>

Manuscript received: 25 April 2018

Manuscript accepted: 16 July 2018

Published on: 25 September 2018

Topic editor: Rudy Jocqué

Desk editor: Pepe Fernández

Printed versions of all papers are also deposited in the libraries of the institutes that are members of the EJT consortium: Muséum national d'Histoire naturelle, Paris, France; Botanic Garden Meise, Belgium; Royal Museum for Central Africa, Tervuren, Belgium; Natural History Museum, London, United Kingdom; Royal Belgian Institute of Natural Sciences, Brussels, Belgium; Natural History Museum of Denmark, Copenhagen, Denmark; Naturalis Biodiversity Center, Leiden, the Netherlands; Museo Nacional de Ciencias Naturales-CSIC, Madrid, Spain; Real Jardín Botánico de Madrid CSIC, Spain; Zoological Research Museum Alexander Koenig, Bonn, Germany.