

Non-phosphorylatable PEA-15 sensitises ovarian cancer cells to cisplatin

Shahana Dilruba, Alessia Grondana, Anke C. Schiedel, Naoto T. Ueno, Chandra Bartholomeusz, Jindrich Cinatl jr., Katie-May McLaughlin, Mark N. Wass, Martin Michaelis, and Ganna V. Kalayda*

Supplementary Information

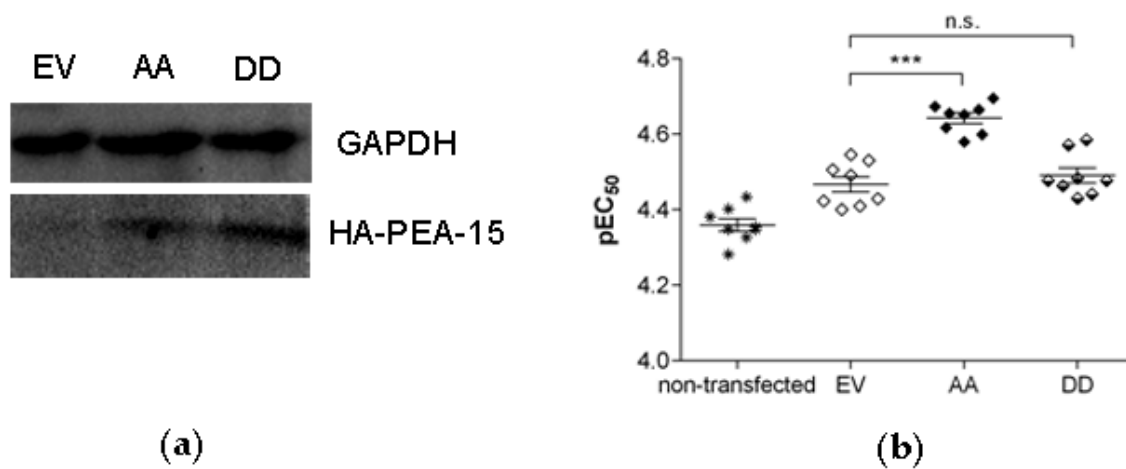


Figure S1. (a) Expression of hemagglutinin (HA)-tagged PEA-15 in EFO27:CDDP²⁰⁰⁰ cells after transfection with the HA-tagged empty vector (EV), PEA-15AA (AA) and PEA-15DD (DD). GAPDH was used as a loading control. (b) Cisplatin cytotoxicity (pEC₅₀, mean ± SEM, n = 8) in non-transfected EFO27:CDDP²⁰⁰⁰ cells, cells transfected with empty vector (EV), with PEA-15AA (AA), and with PEA-15DD (DD). ***p < 0.001, n.s. = not significant.