

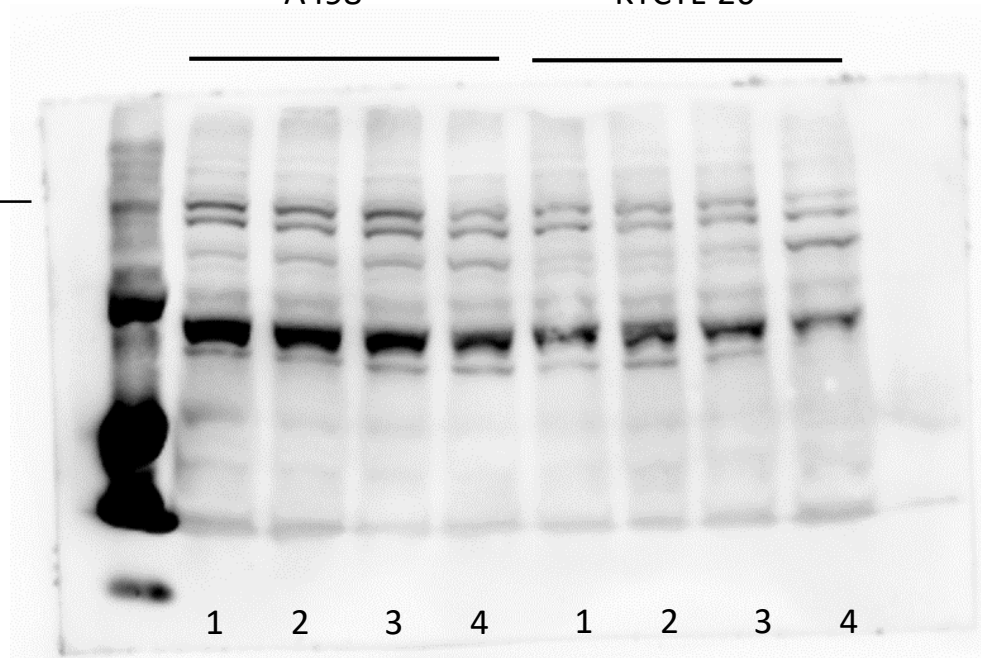
Figure S1. Whole Western Blots for figure 7.

Alpha1

A498

KTCTL-26

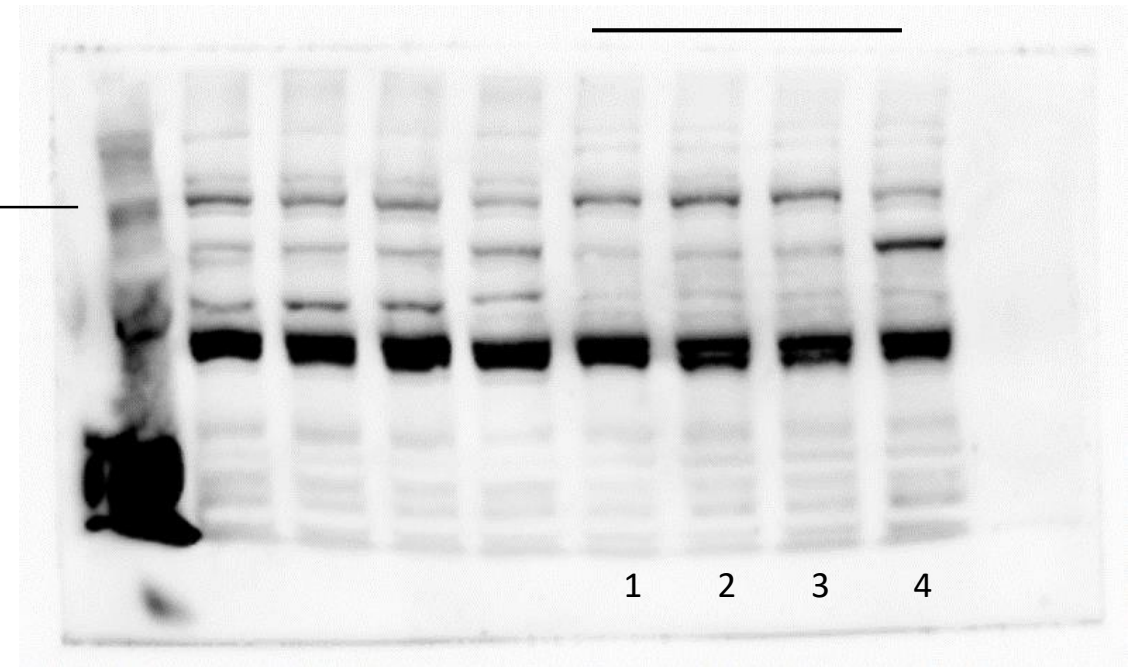
200 kD



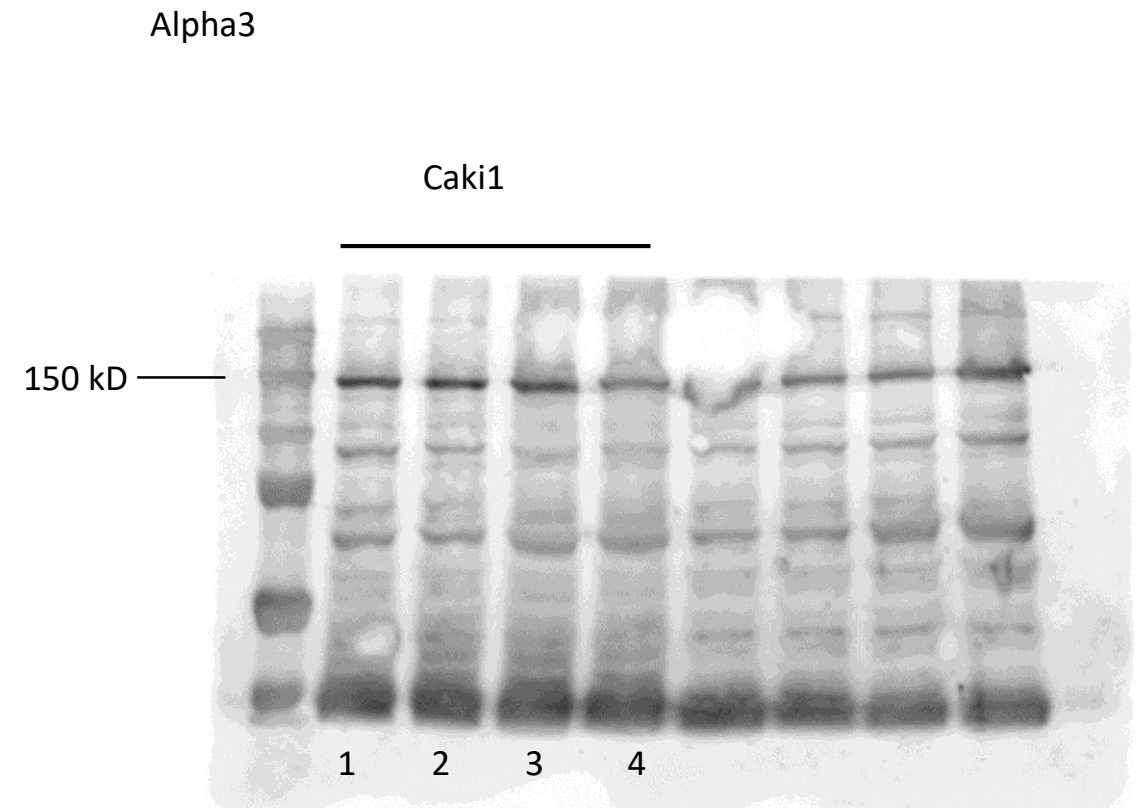
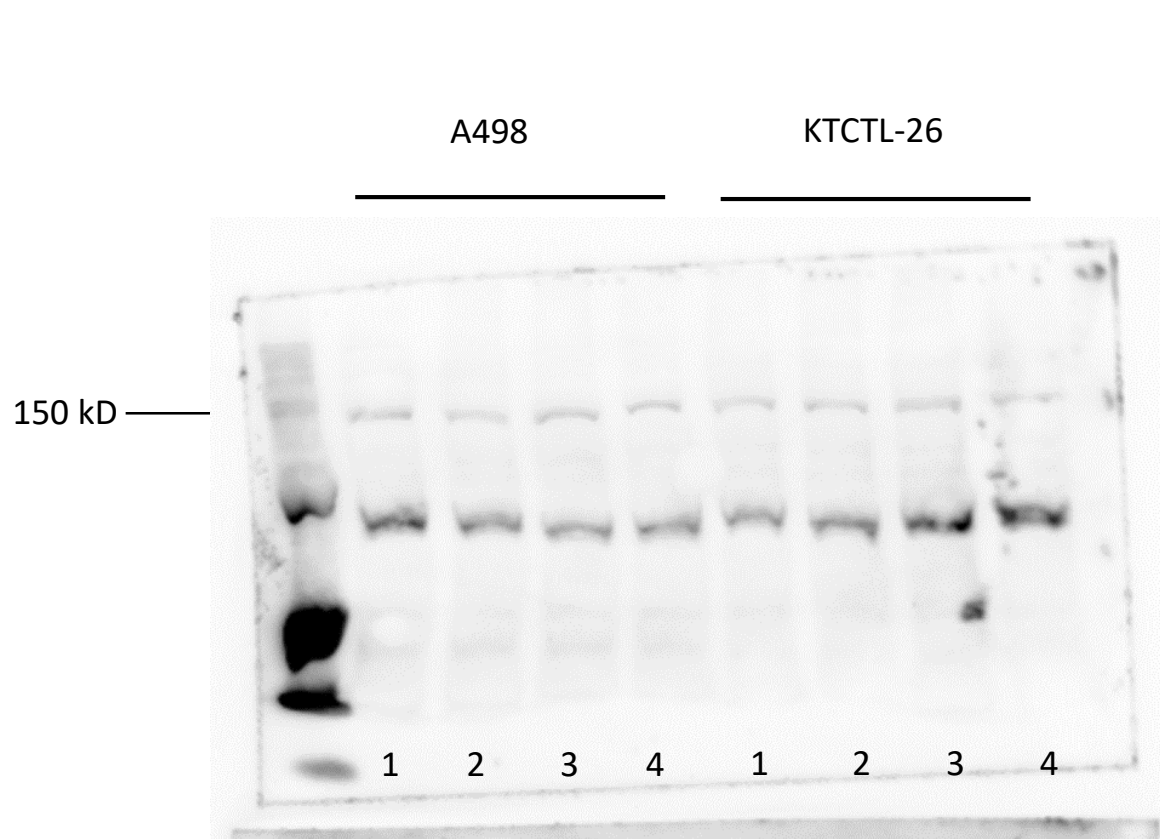
Alpha2

KTCTL-26

150 kD



- 1=Control
- 2=Light
- 3=Curcumin
- 4=Curcumin^{Light}



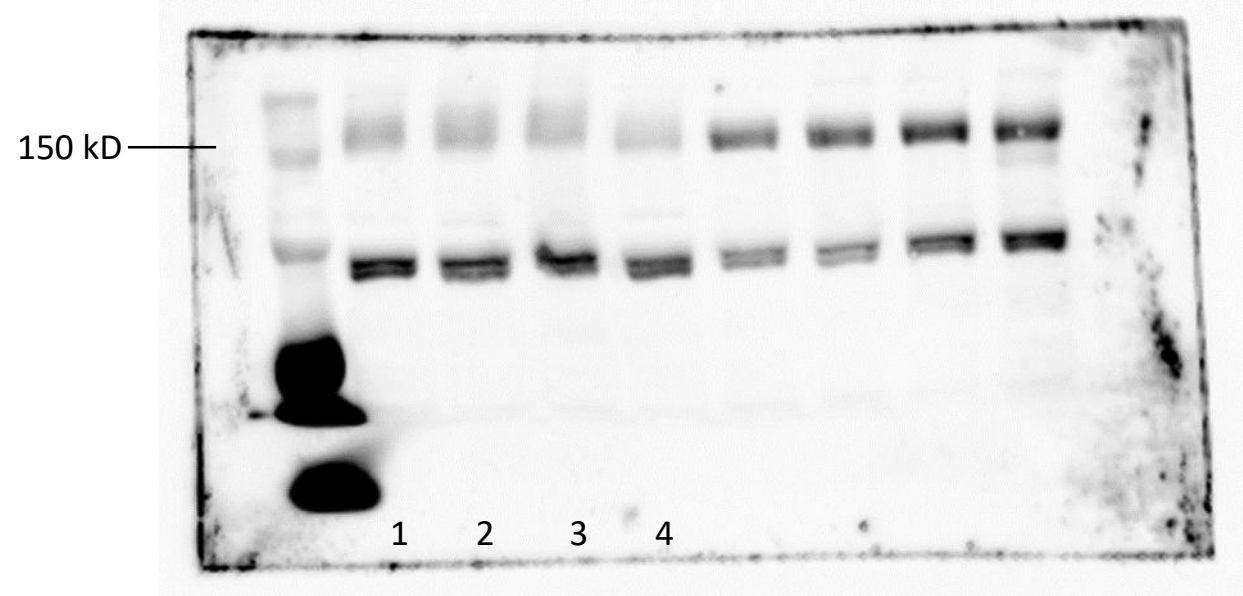
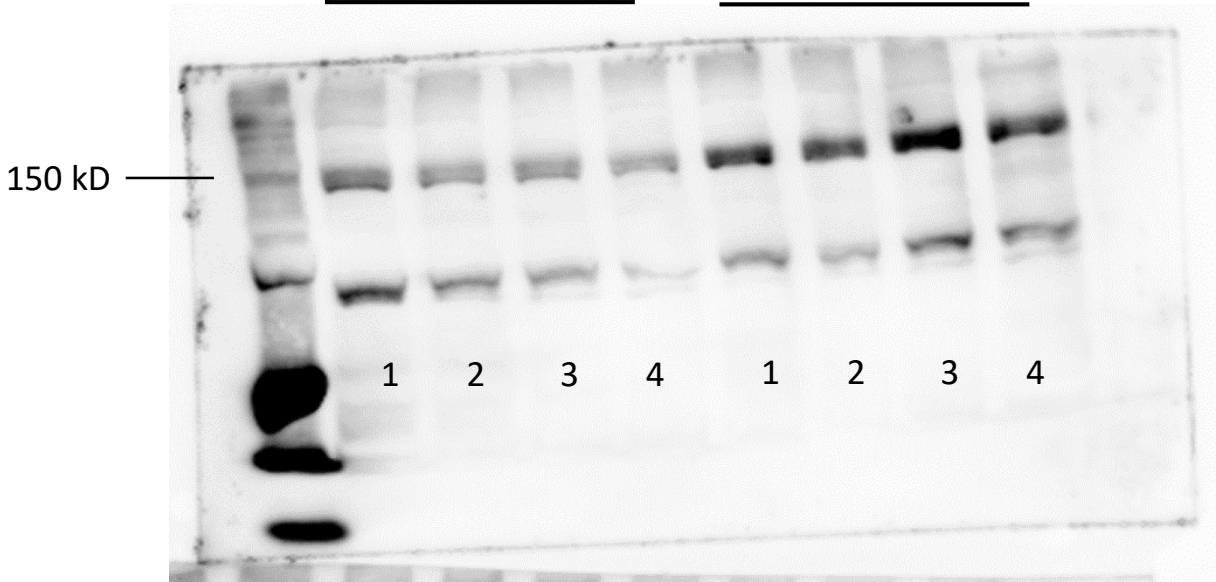
1=Control
2=Light
3=Curcumin
4=Curcumin^{Light}

Alpha5

A498

KTCTL-26

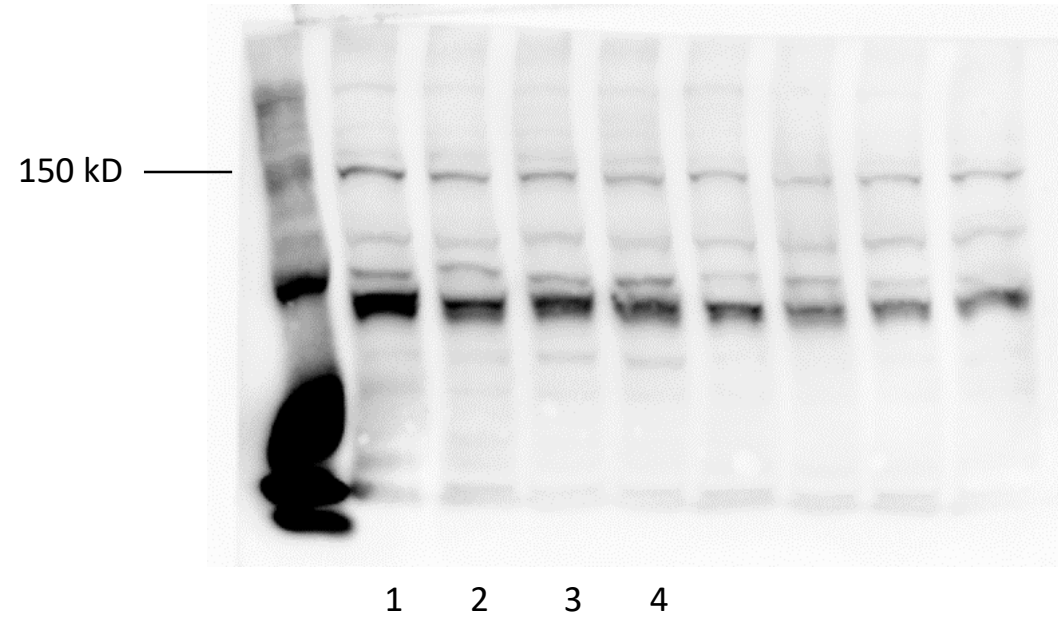
Caki1



- 1=Control
- 2=Light
- 3=Curcumin
- 4=Curcumin^{Light}

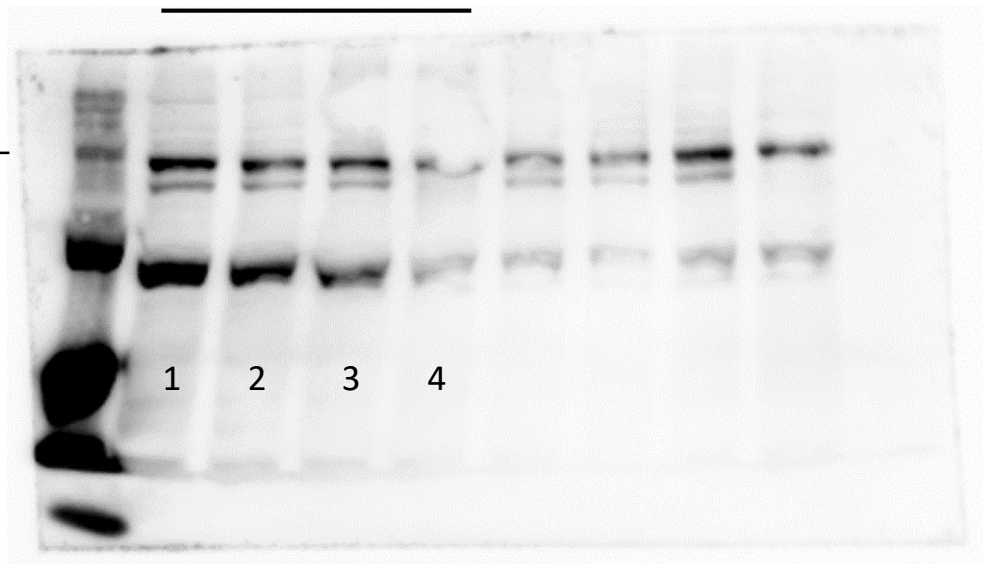
Alpha6

KTCTL-26

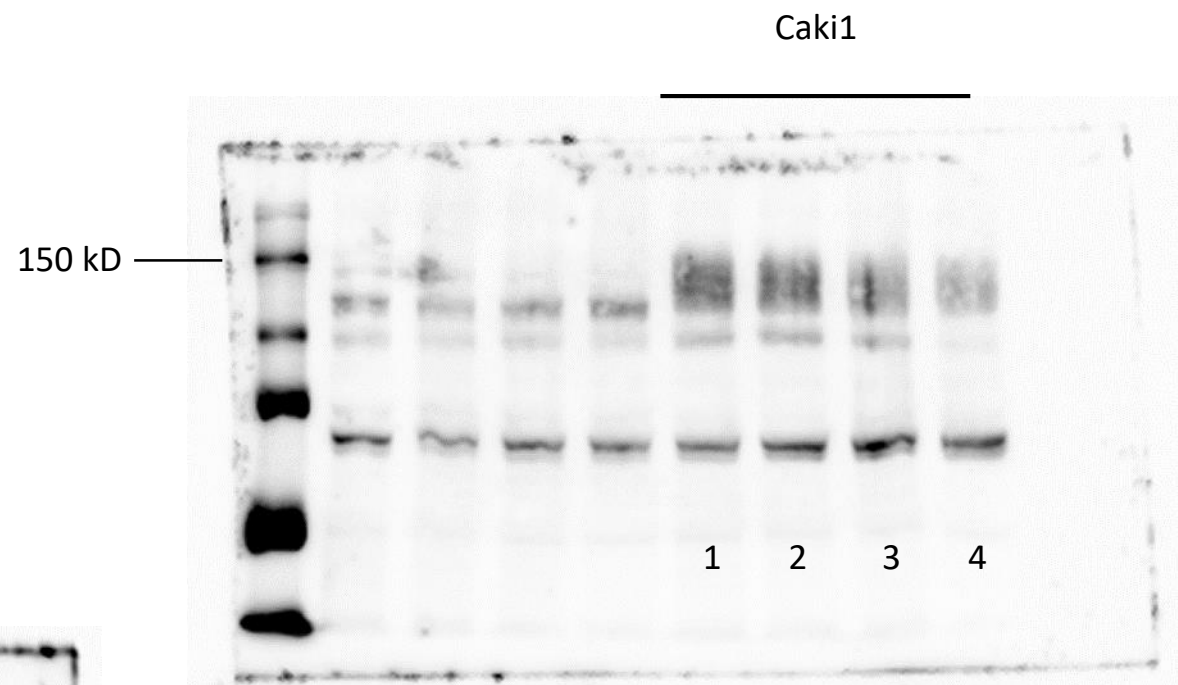


1=Control
2=Light
3=Curcumin
4=Curcumin^{Light}

A498

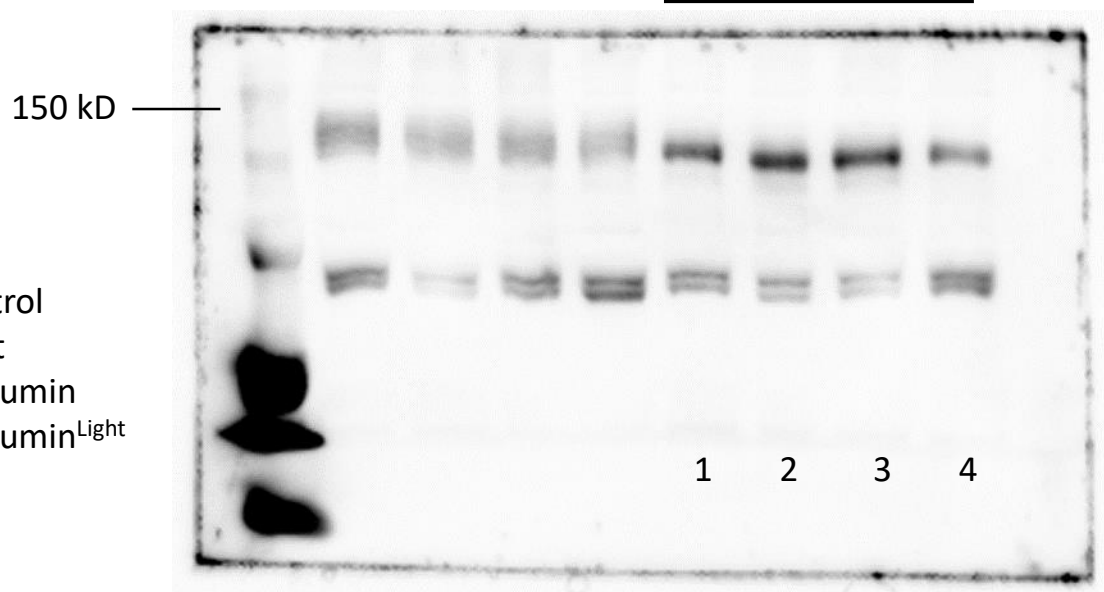


Beta1



Caki1

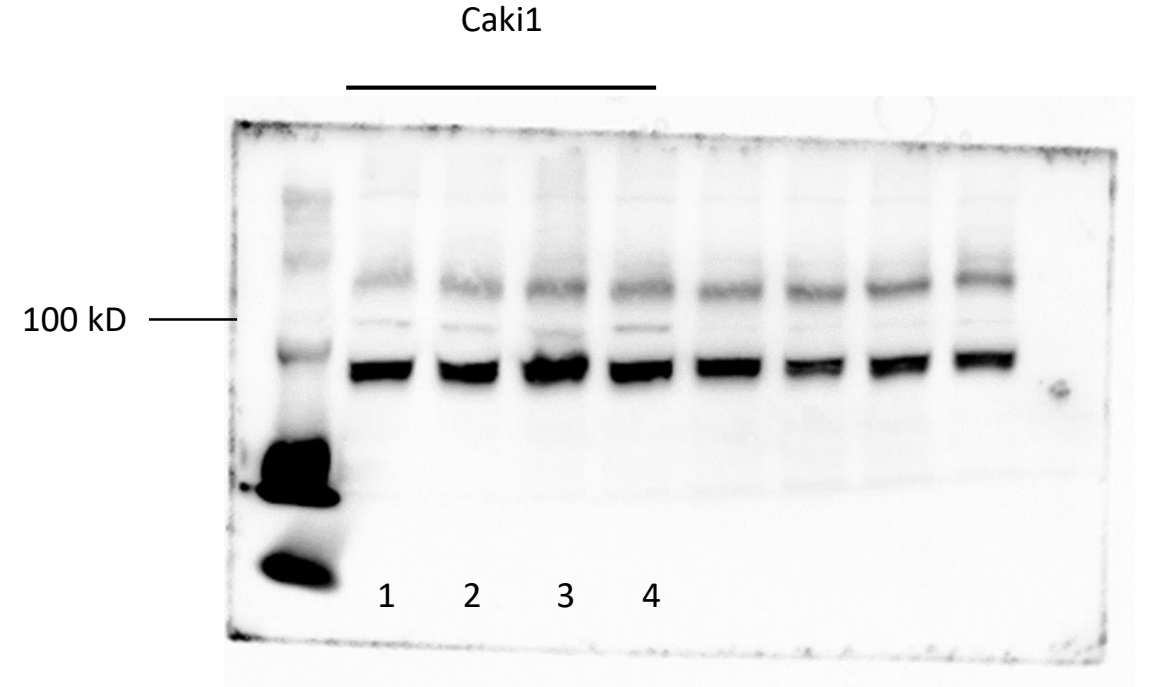
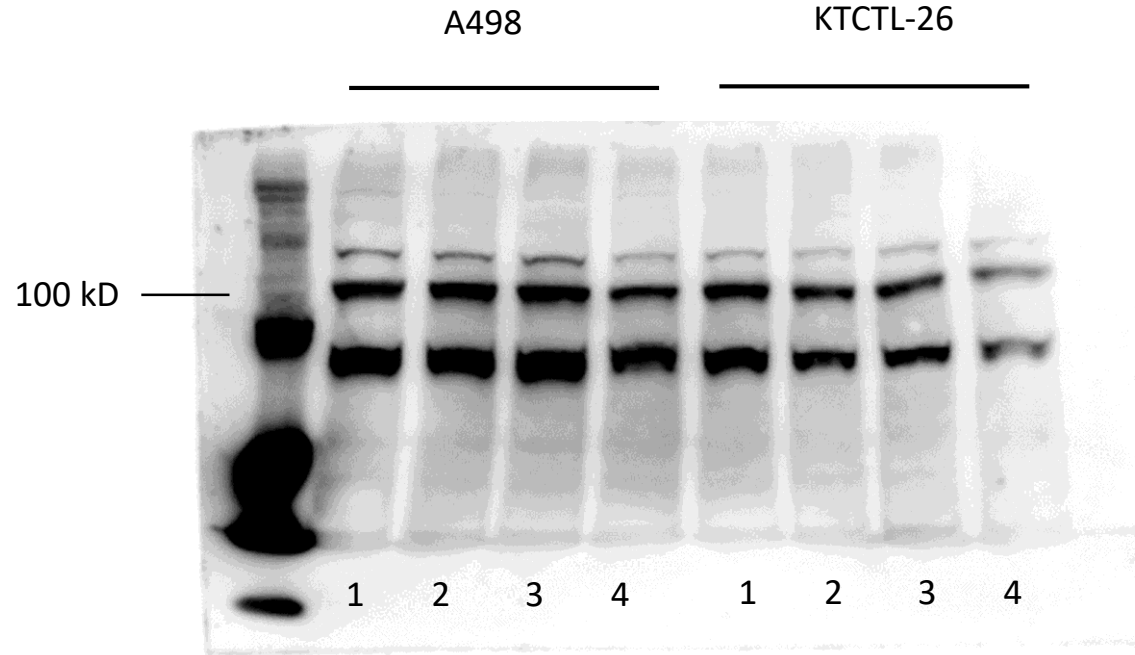
KTCTL-26



1=Control
2=Light
3=Curcumin
4=Curcumin^{Light}

1 2 3 4

Beta3



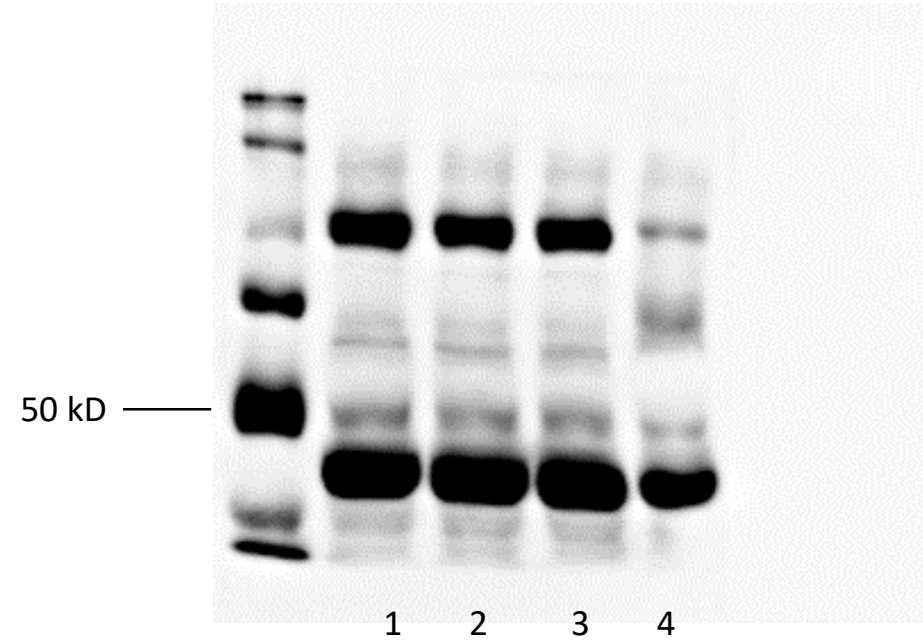
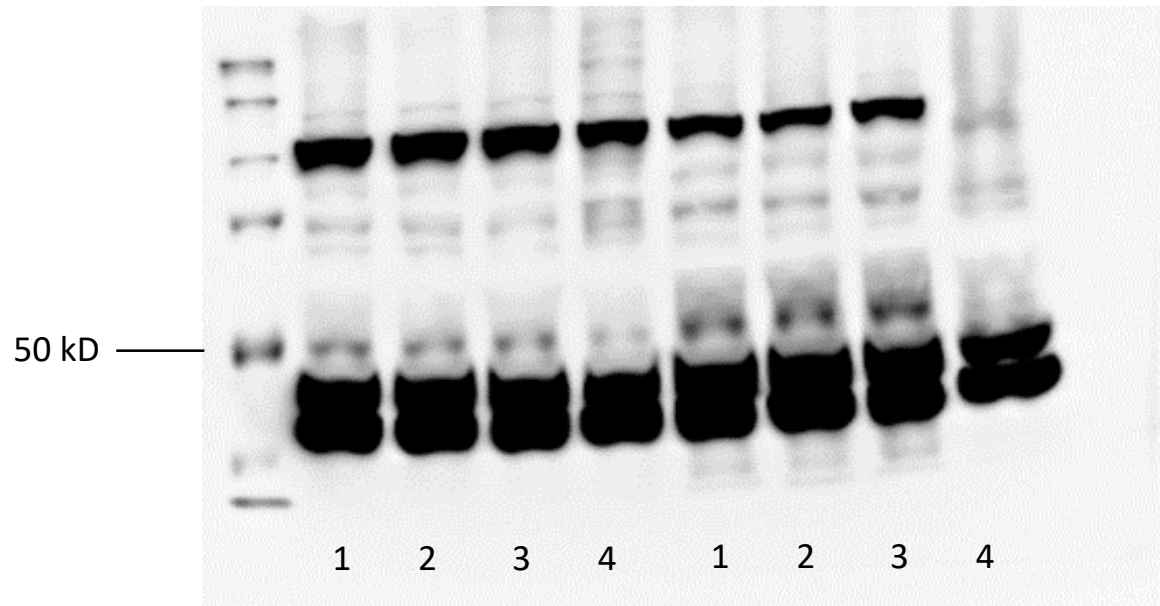
1=Control
2=Light
3=Curcumin
4=Curcumin^{Light}

ILK

A498

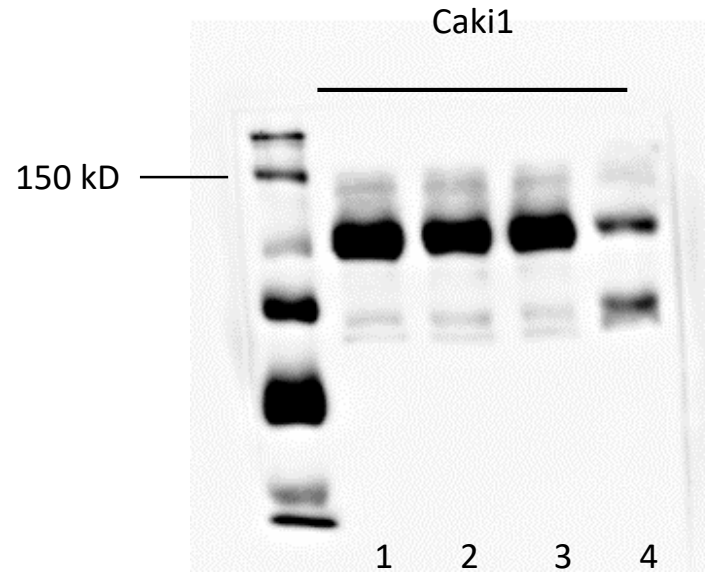
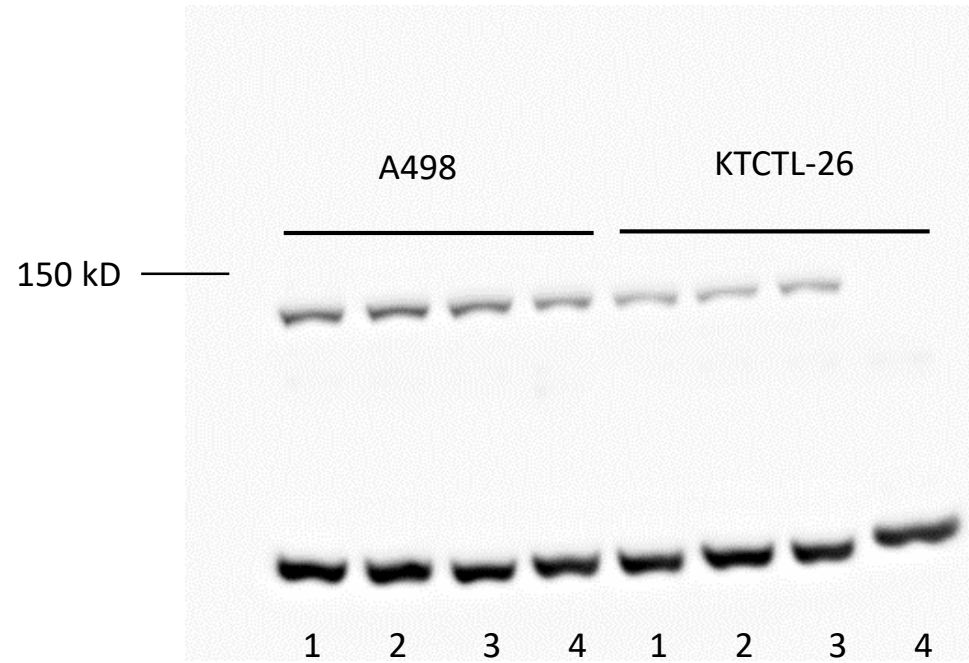
KTCTL-26

Caki1



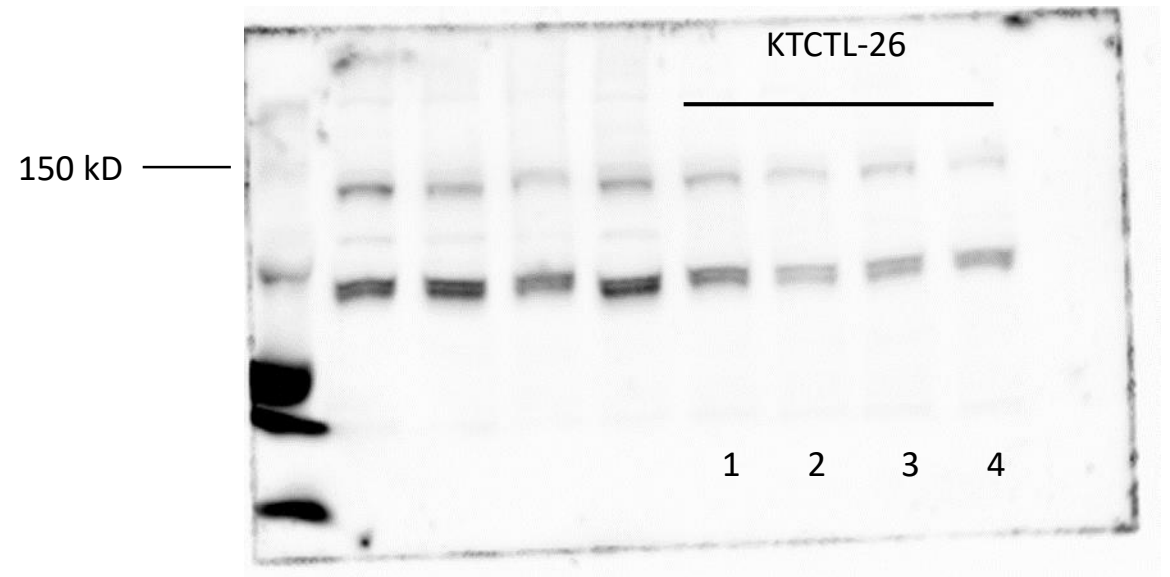
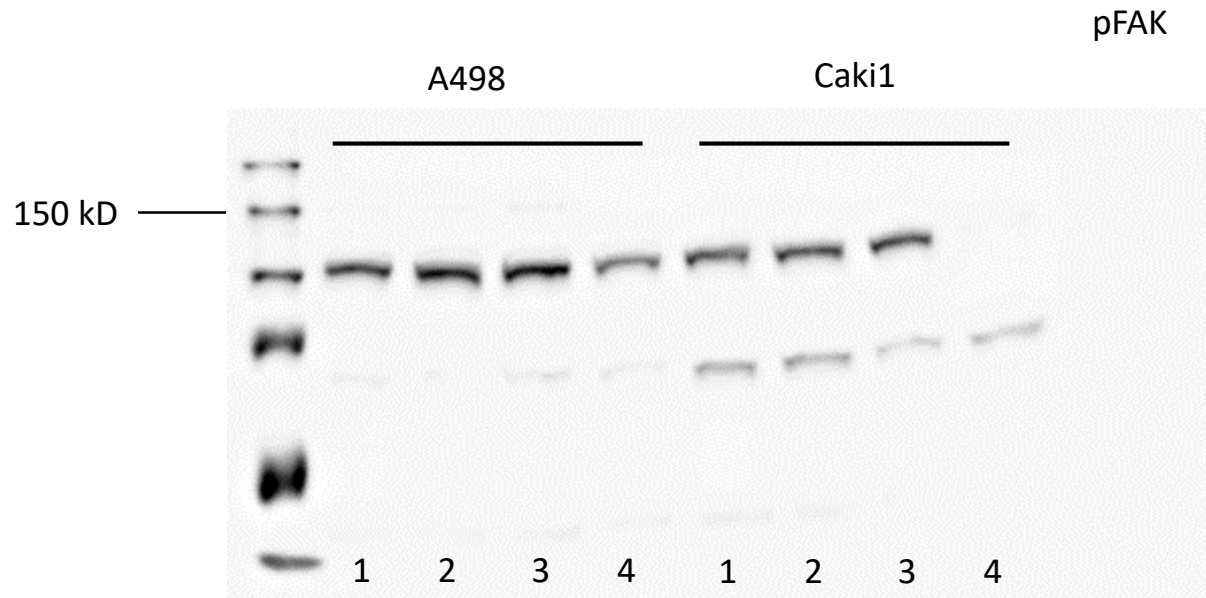
- 1=Control
- 2=Light
- 3=Curcumin
- 4=Curcumin^{Light}

FAK

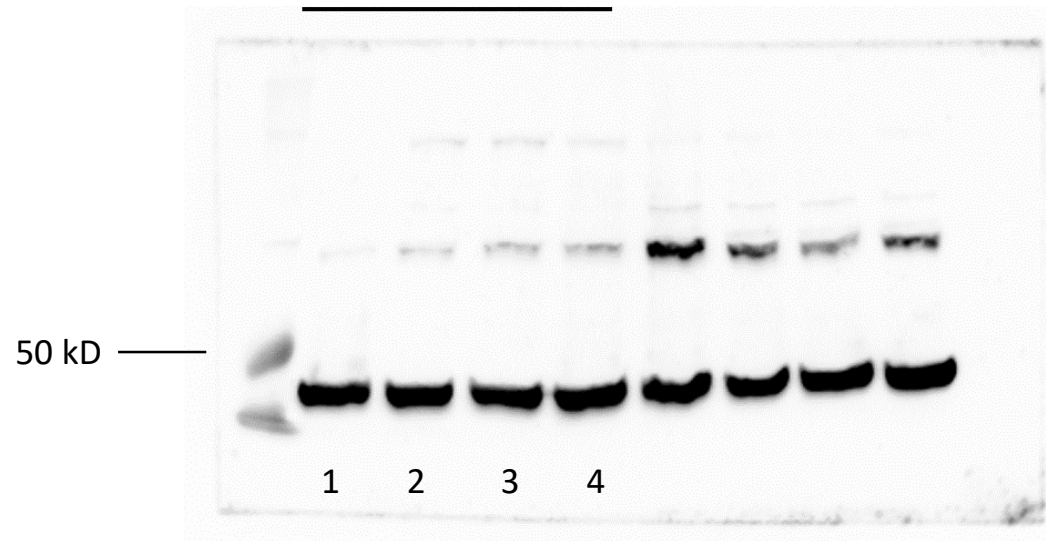


1=Control
2=Light
3=Curcumin
4=Curcumin^{Light}

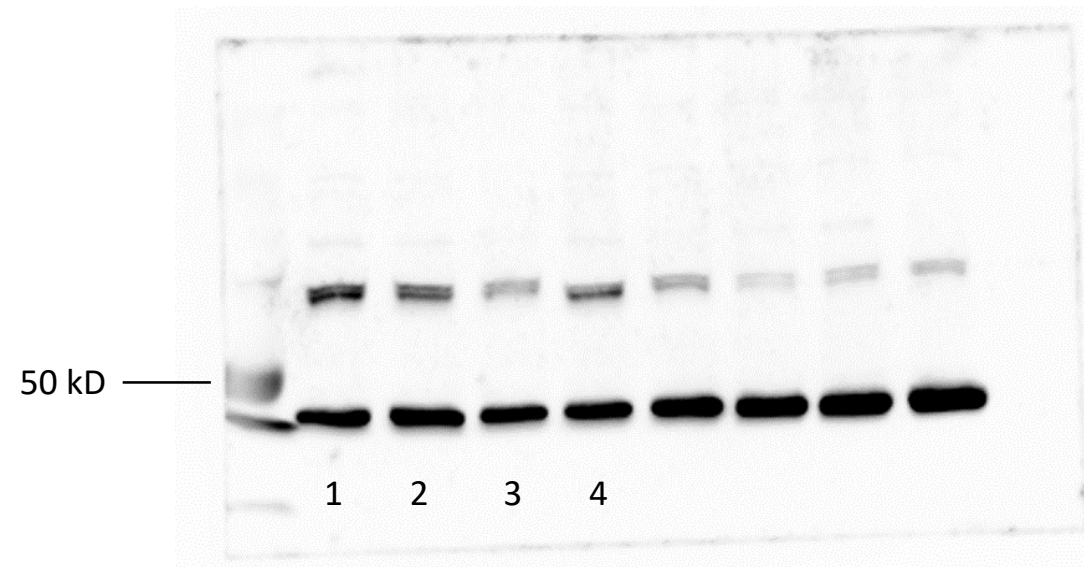
pFAK



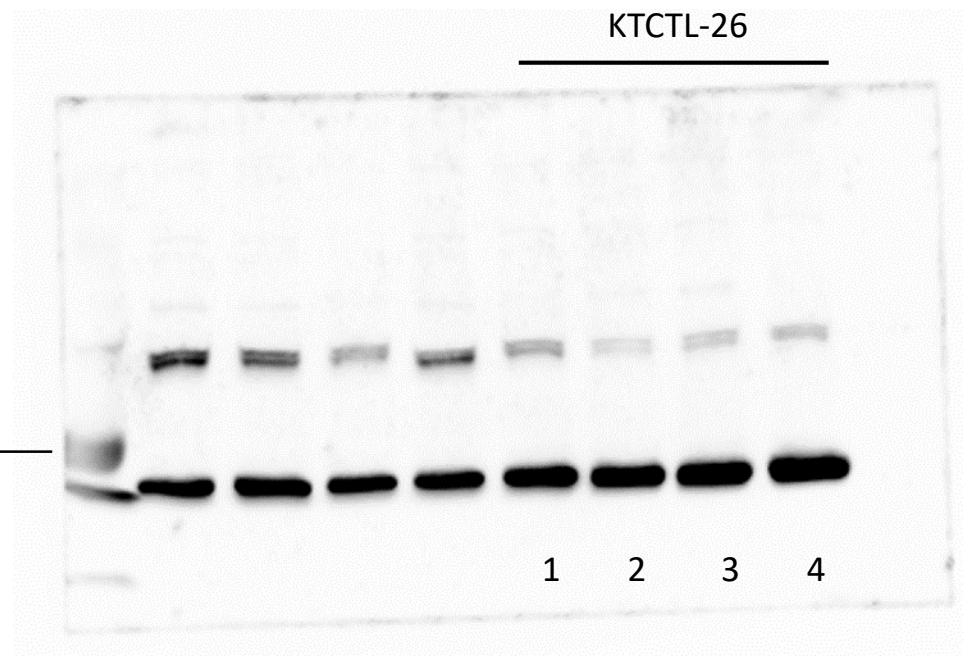
A498



β -actin



Caki1



1=Control
2=Light
3=Curcumin
4=Curcumin^{Light}

KTCTL-26

Figure S2: Pixel density values for figure 8

A498	Control	Light	Curcumin	Curcumin ^{Light}
alpha1	96	91,1	99,7	61,4
alpha2	n.d.			
alpha3	31	23,4	28,7	24,4
alpha4	n.d.			
alpha5	94,6	64,6	65,3	56,6
alpha6	n.d.			
beta1	92,7	63	56,3	33,5
beta3	195,5	205,8	215,7	173,1
beta4	n.d.			
ILK	88,8	81,2	81,7	51,2
FAK	80,9	79,4	68,5	49,4
pFAK	103,3	128	130,7	71,8
beta-Aktin	181	170,4	172,5	187,8

p-values (control vs. curcumin^{Light})

0.0143
n.d.
n.s.
n.d.
n.s.
n.d.
0.0010
0.0462
n.d.
0.0026
0.0265
0.0008

Caki1	Control	Light	Curcumin	Curcumin ^{Light}
alpha1	n.d.			
alpha2	n.d.			
alpha3	106,1	103,6	116,4	94,5
alpha4	n.d.			
alpha5	50	49,4	44,9	35,2
alpha6	n.d.			
beta1	122,7	120,7	87,8	59,5
beta3	17,2	20,7	40,4	34
beta4	n.d.			
ILK	100,3	94,2	84,8	45,9
FAK	55,6	58,4	52,8	21,3
pFAK	76,4	81,1	75,6	6,6
beta-Aktin	215	228	199,2	206

n.d.
n.d.
n.s.
n.d.
0.0002
n.d.
0.0007
0.0210
n.d.
0.0019
0.0066
0.0008

KTCTL-26	Control	Light	Curcumin	Curcumin ^{Light}
alpha1	69	66,6	64,5	38,9
alpha2	64,1	80,2	68,3	51,6
alpha3	20,4	22,1	24,9	21,3
alpha4	n.d.			
alpha5	129,6	118,3	181,3	144,8
alpha6	70	52,6	52,2	47,8
beta1	99,8	125,5	125,4	69,5
beta3	172,1	140,3	135,6	77
beta4	n.d.			
ILK	124,8	133,6	143,7	57,2
FAK	42,1	37,5	42,5	5,9
pFAK	34,5	20,1	22,7	13,8
beta-Aktin	188,7	193,3	206,1	222,4

0.0017
0.0407
n.s.
n.d.
n.s.
0.0398
0.0047
0.0008
n.d.
0.0010
0.0008
0.0018

n.s.= not significant, n.d.= not done