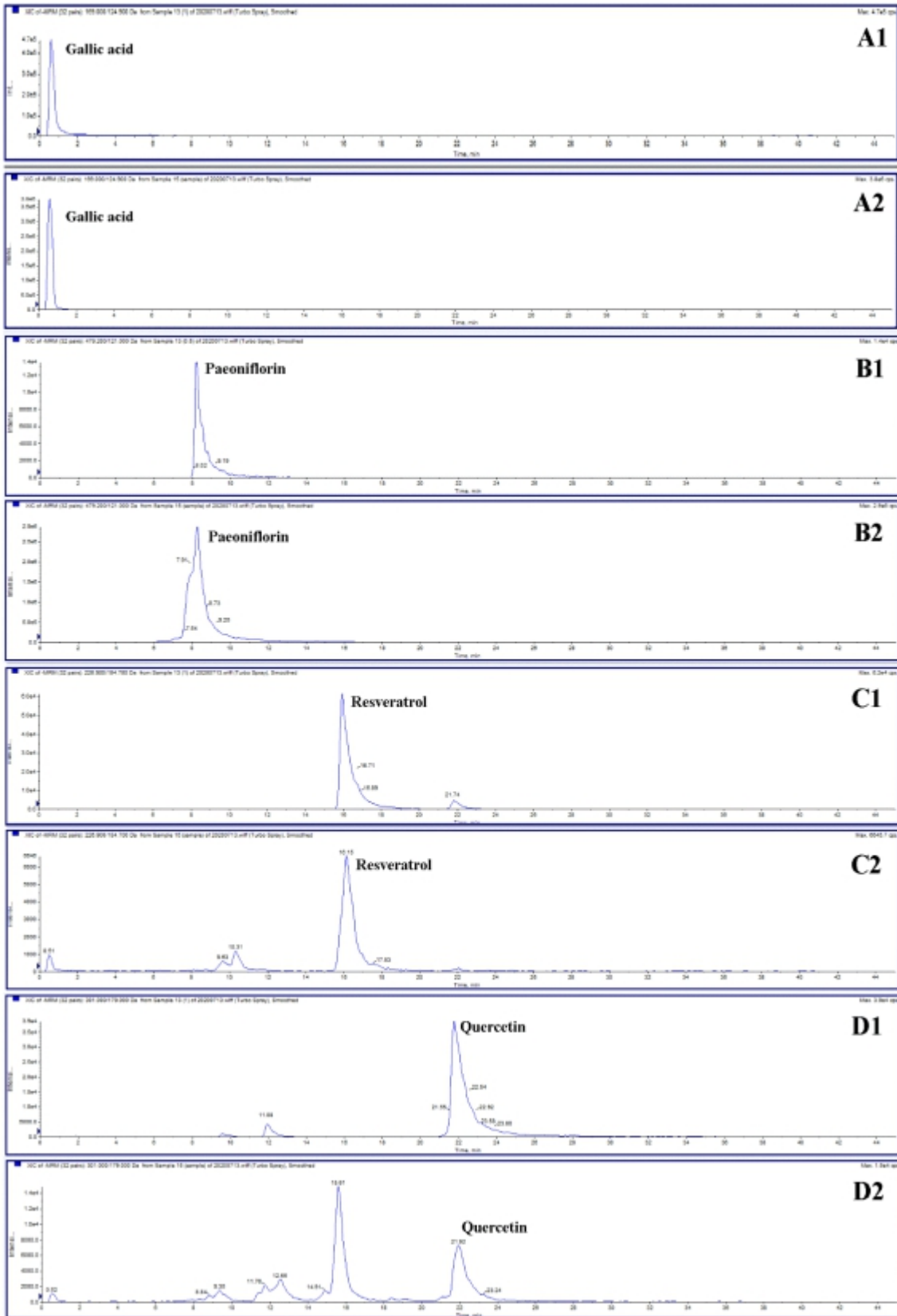


Figure S1 The MRM diagram of the seven components in mixed reference solution and GDFMD.

(A: Gallic acid, B: Paeoniflorin, C: Resveratrol, D: Quercetin, E: Notoginsenoside, F: Saikosaponin A, G: Curcumin. 1: Mixed reference solution, 2: GDFMD sample solution).



Continue

