

PC3 – p21

1

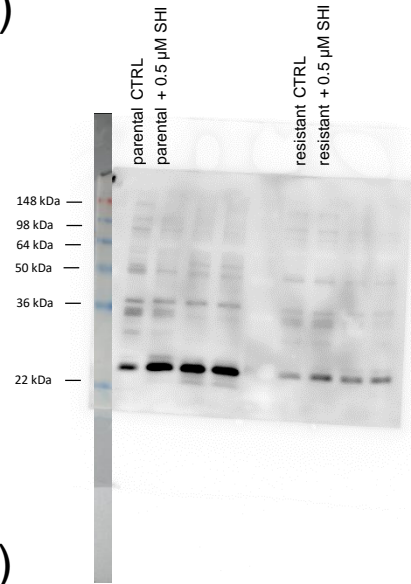
2

3

4

(1)

p21 (21 kDa)



(2)

β-actin

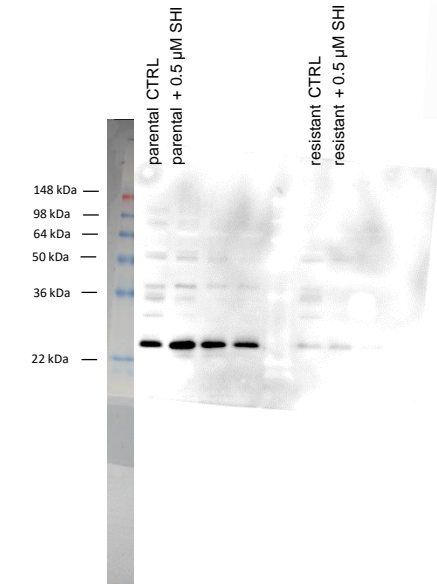
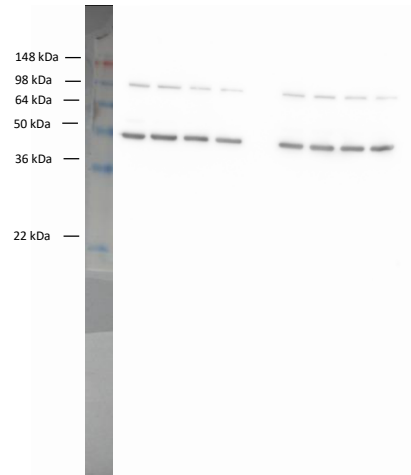


Figure S1a: Detailed information about Figure 5 - Protein expression profile of cell cycle regulating proteins in parental and DX-resistant PC3 cells. Protein expression of p21 (1), corresponding protein expression of β-actin (2).

PC3 – p27

1

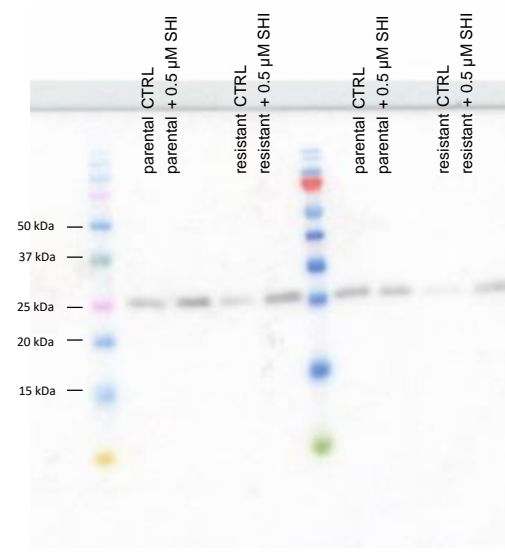
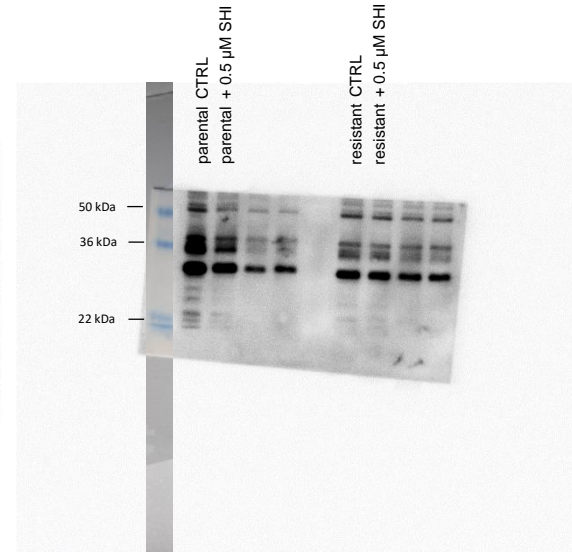
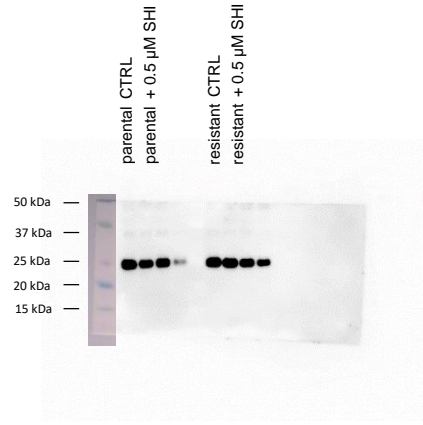
2

3

4

(1)

p27 (27 kDa)



(2)

β-actin

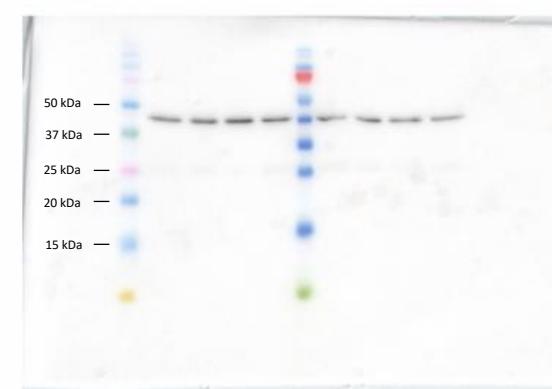
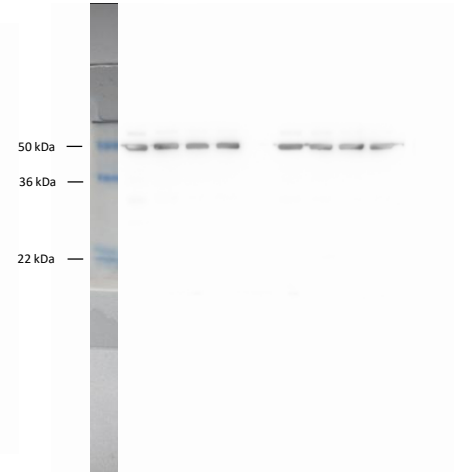
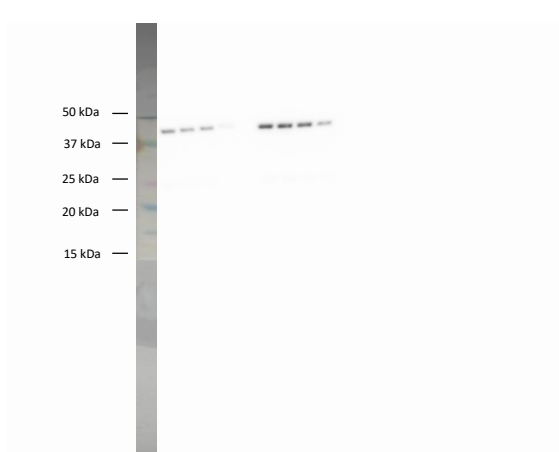
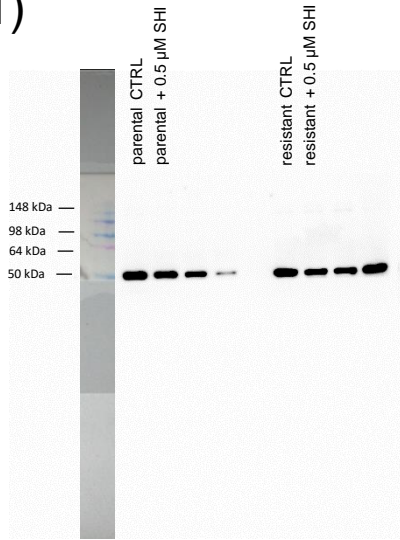


Figure S1b: Detailed information about Figure 5 - Protein expression profile of cell cycle regulating proteins in parental and DX-resistant PC3 cells. Protein expression of p27 (1), corresponding protein expression of β-actin (2).

Cyclin A (55 kDa)

(1)



(2)

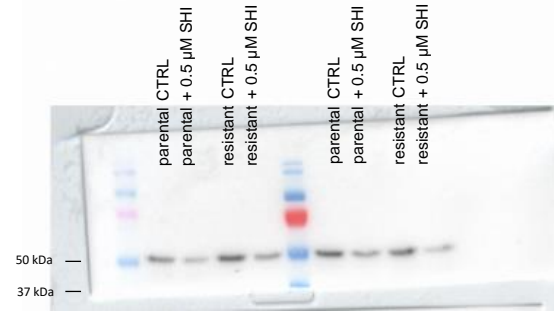
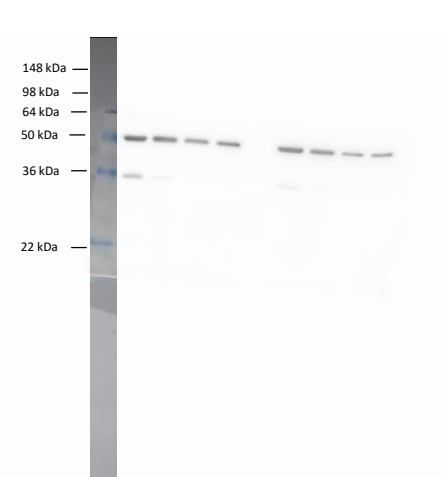
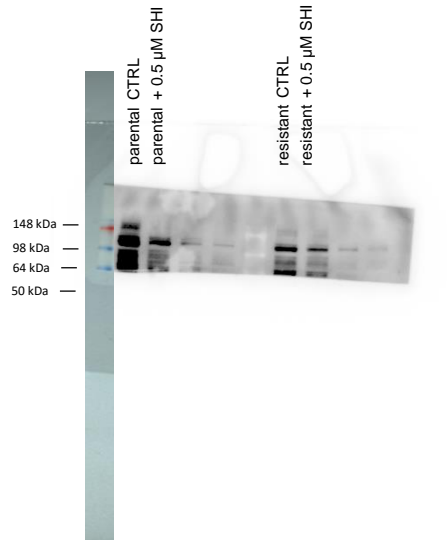
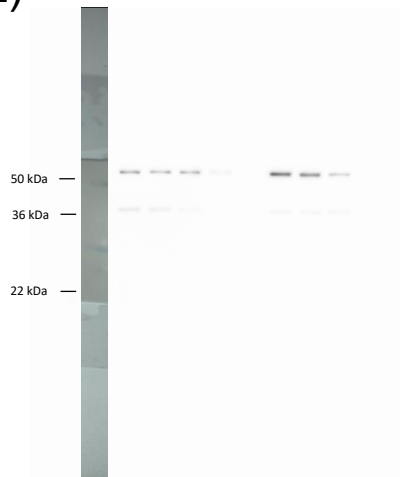
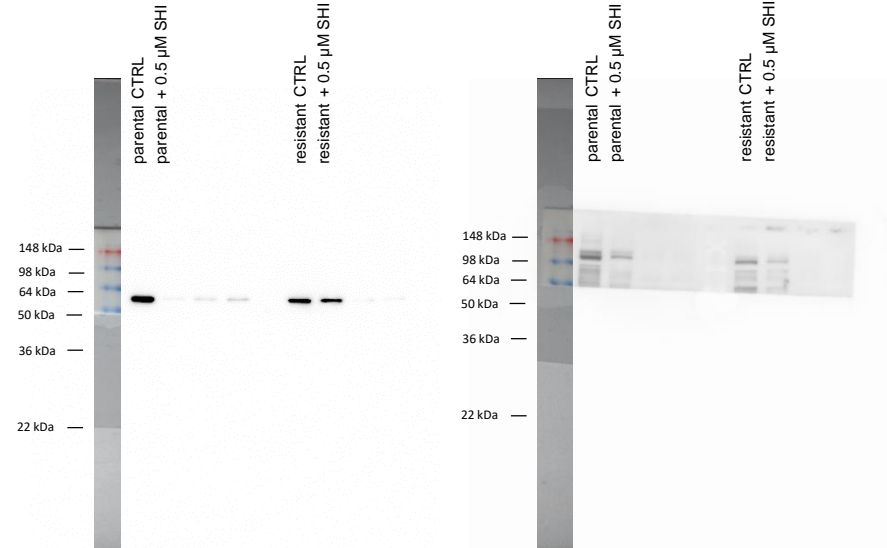


Figure S1c: Detailed information about Figure 5 - Protein expression profile of cell cycle regulating proteins in parental and DX-resistant PC3 cells. Protein expression of Cyclin A (1), corresponding protein expression of β-actin (2).

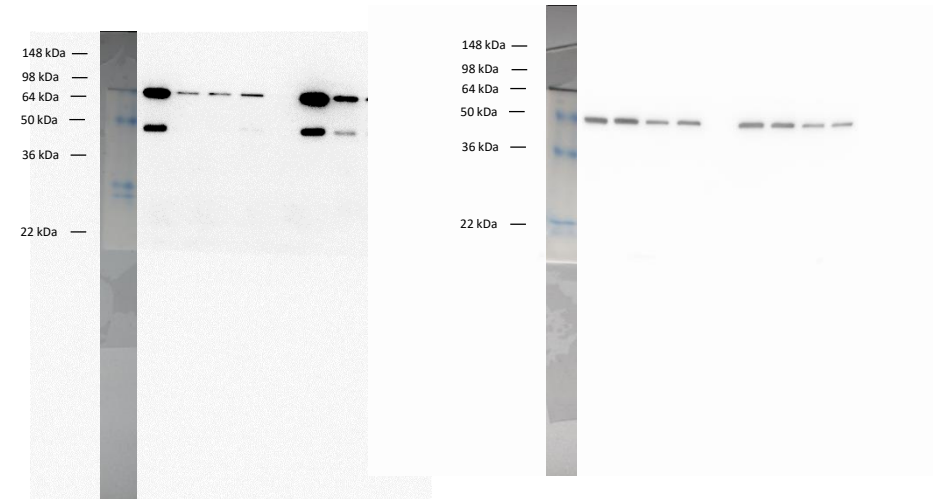
PC3 – Cyclin B

Cyclin B (55 kDa)

(1)



(2)



3

4

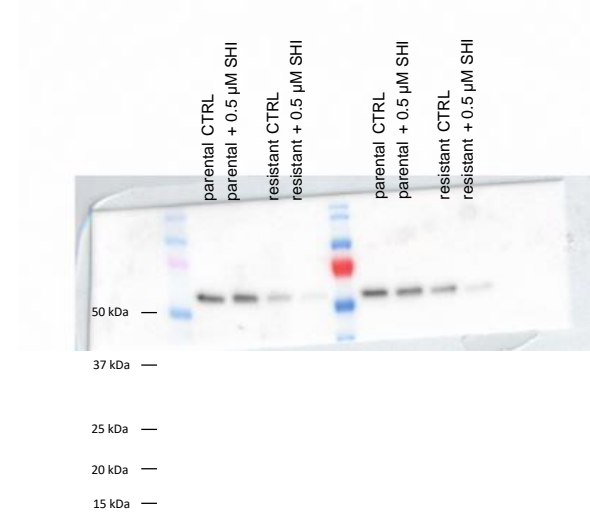
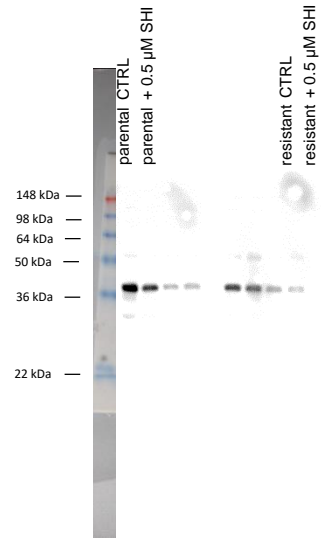


Figure S1d: Detailed information about Figure 5 - Protein expression profile of cell cycle regulating proteins in parental and DX-resistant PC3 cells. Protein expression of Cyclin B (1), corresponding protein expression of β-actin (2).

Cyclin D1 (36 kDa)

(1)



(2)

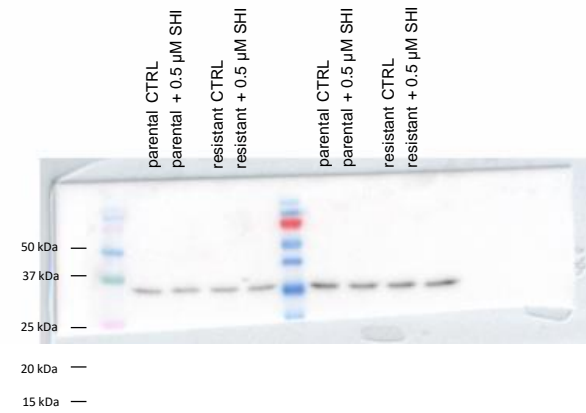
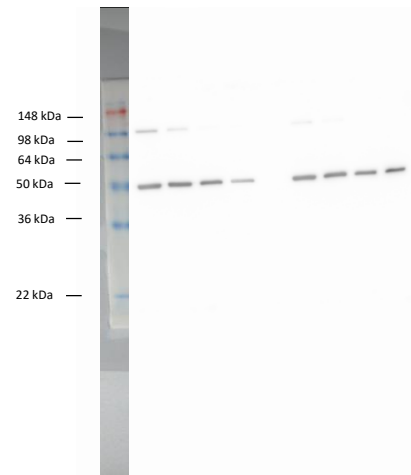
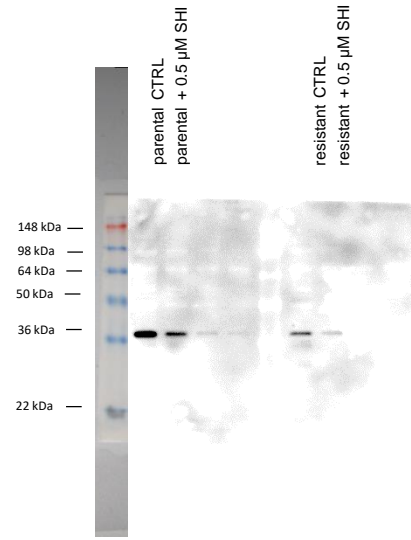
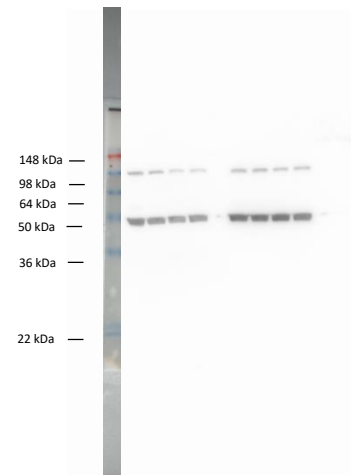
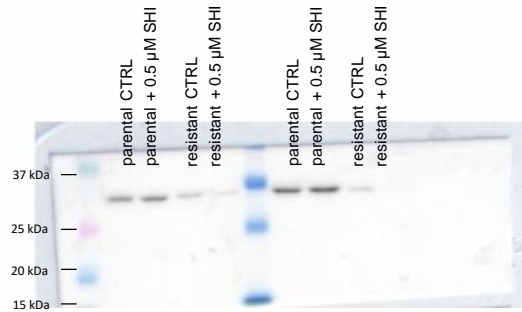
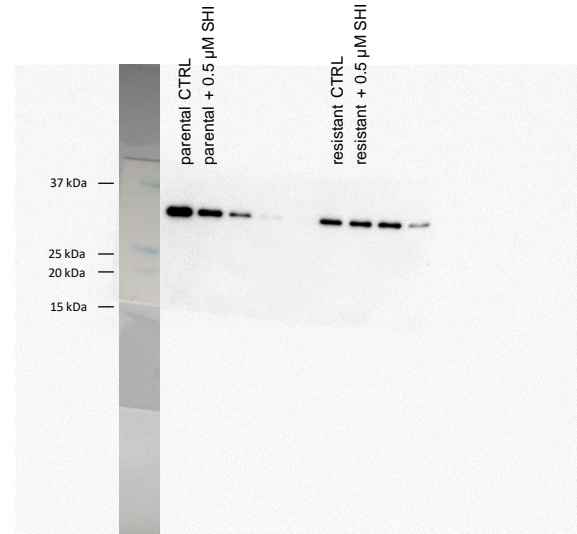
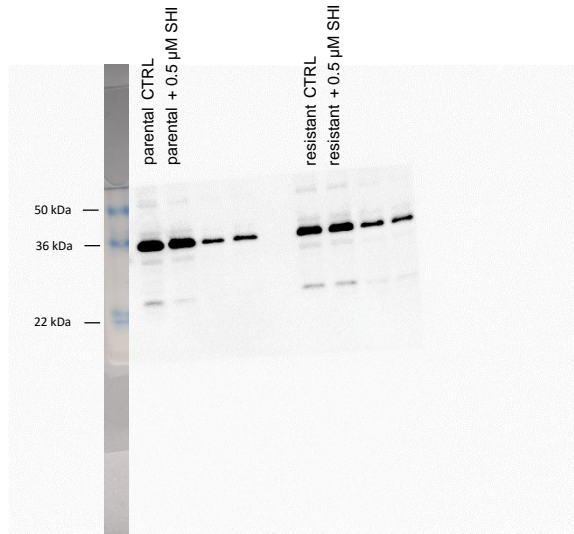


Figure S1e: Detailed information about Figure 5 - Protein expression profile of cell cycle regulating proteins in parental and DX-resistant PC3 cells. Protein expression of Cyclin D1 (1), corresponding protein expression of β-actin (2).

CDK1 (34 kDa)

(1)



(2)

β-actin

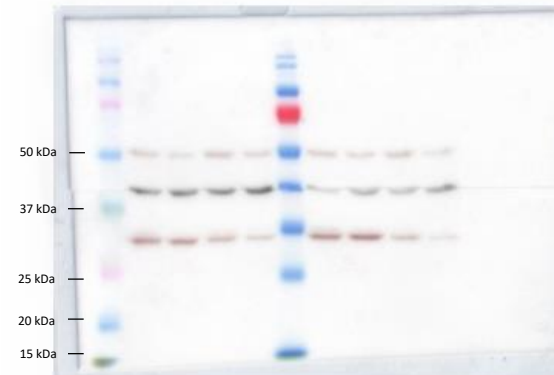
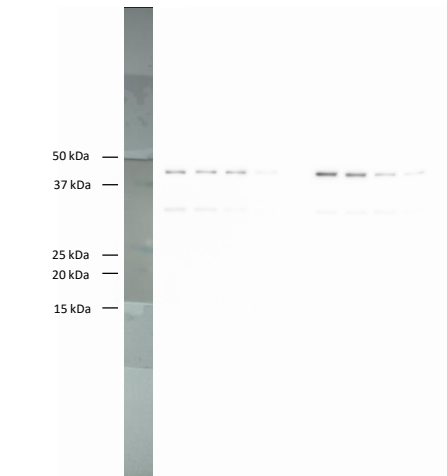
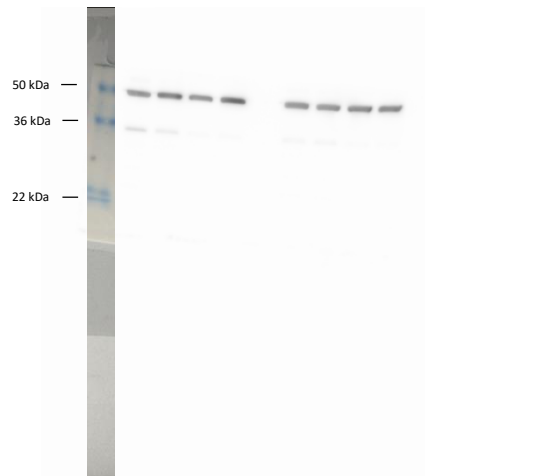
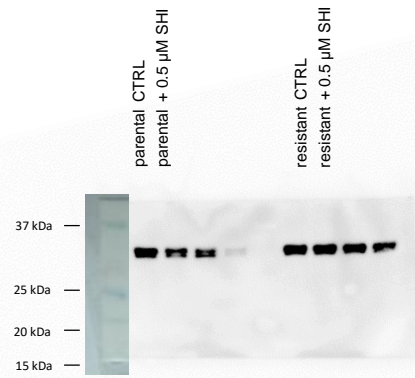
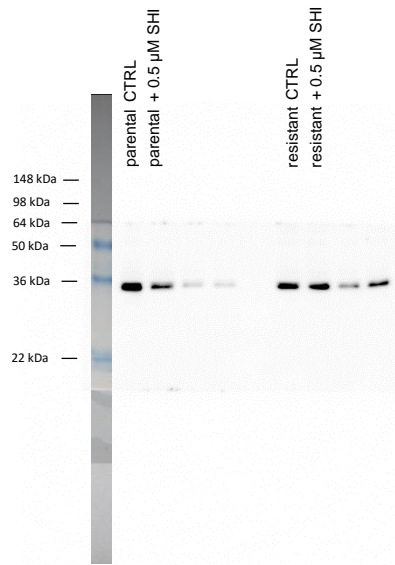


Figure S1f: Detailed information about Figure 5 - Protein expression profile of cell cycle regulating proteins in parental and DX-resistant PC3 cells. Protein expression of CDK1 (1), corresponding protein expression of β-actin (2).

CDK2 (33 kDa)

(1)



β-actin (45 kDa)

(2)

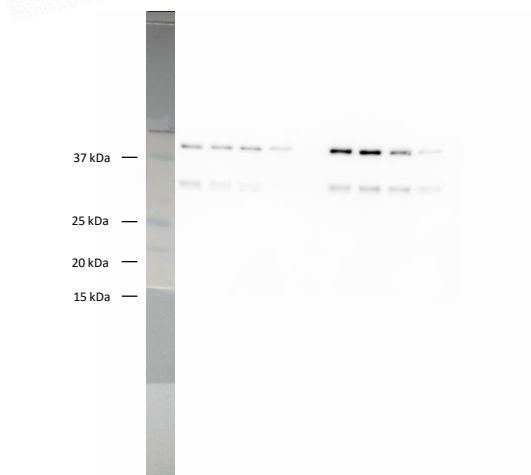
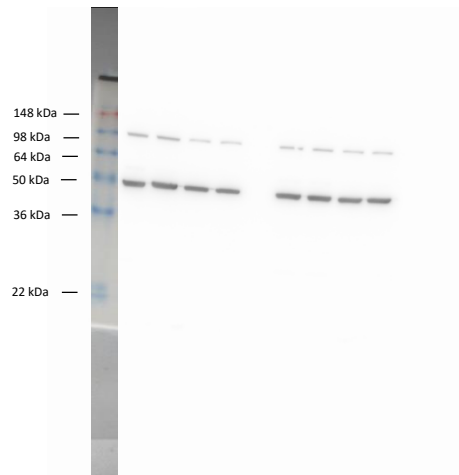


Figure S1g: Detailed information about Figure 5 - Protein expression profile of cell cycle regulating proteins in parental and DX-resistant PC3 cells. Protein expression of CDK2 (1), corresponding protein expression of β-actin (2).

PC3 – pCDK2

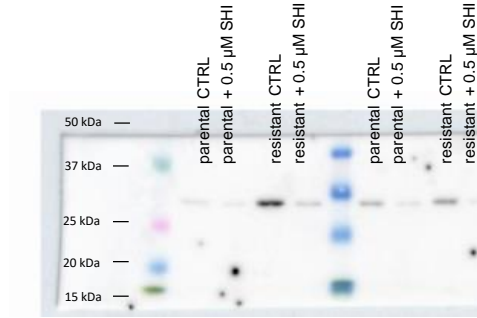
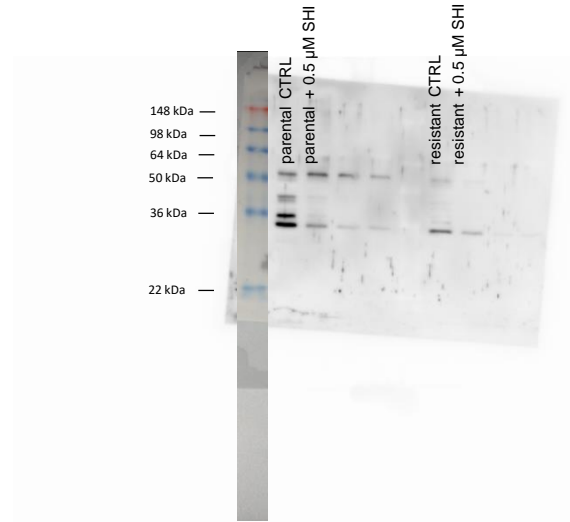
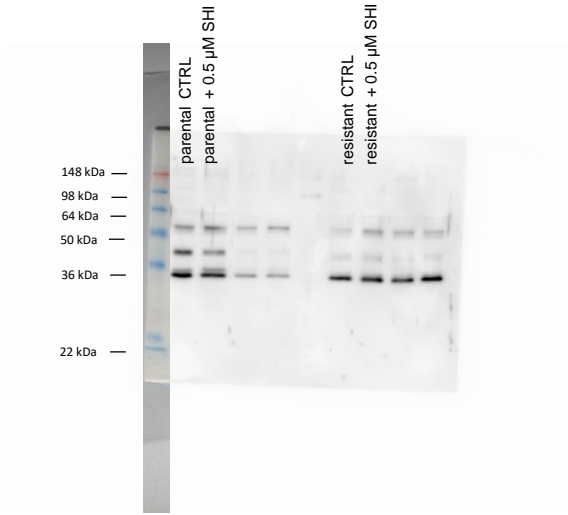
1

2

3

4

(1)



(2)

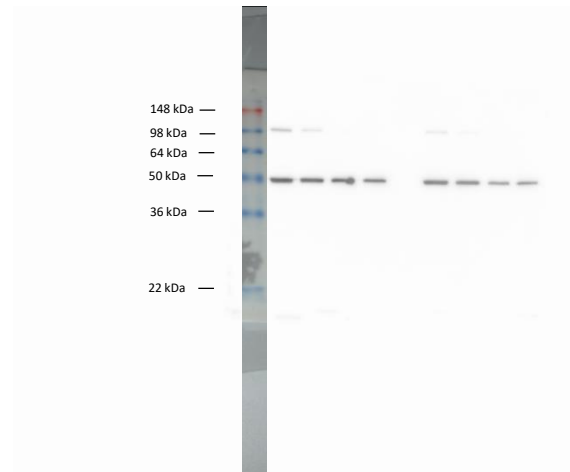
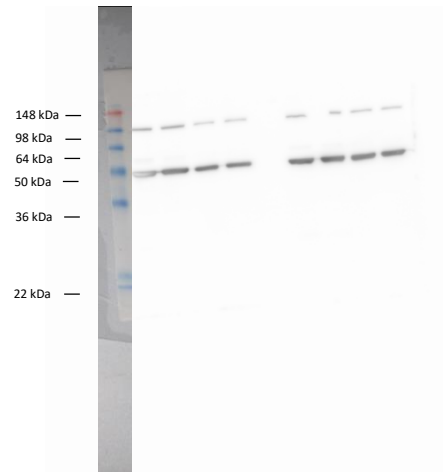
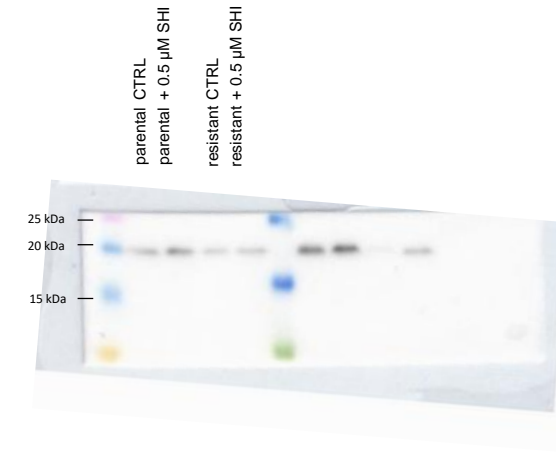
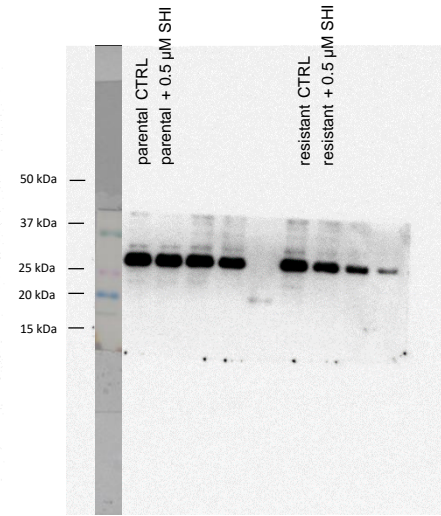
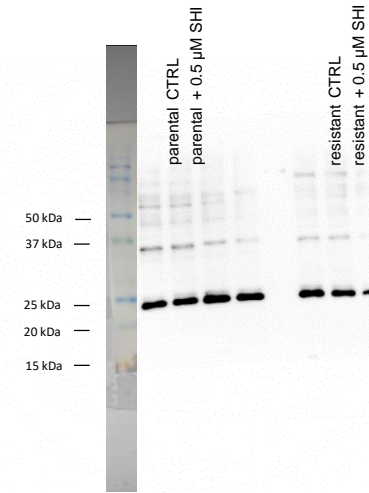
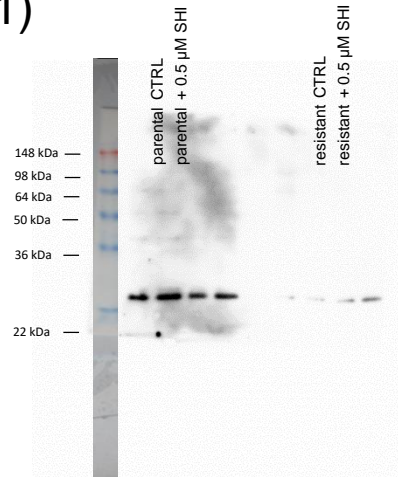


Figure S1h: Detailed information about Figure 5 - Protein expression profile of cell cycle regulating proteins in parental and DX-resistant PC3 cells. Protein expression of pCDK2 (1), corresponding protein expression of β-actin (2).

p21 (21 kDa)

(1)

 β -actin (45 kDa)

(2)

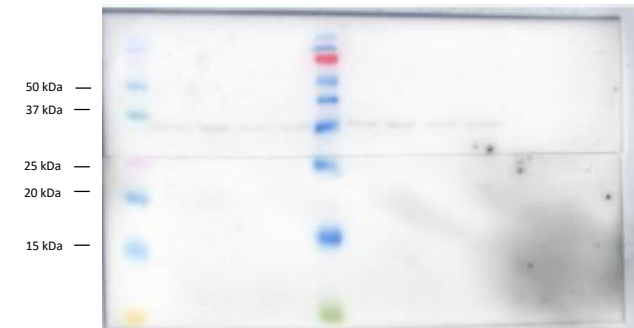
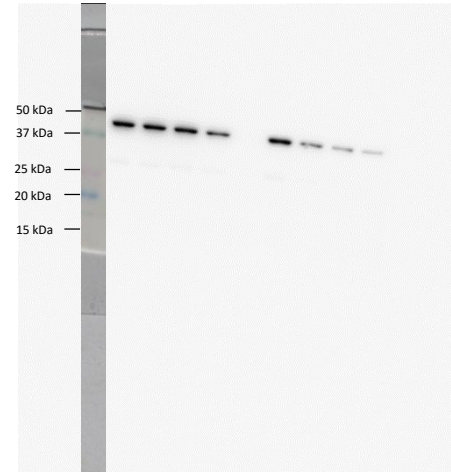
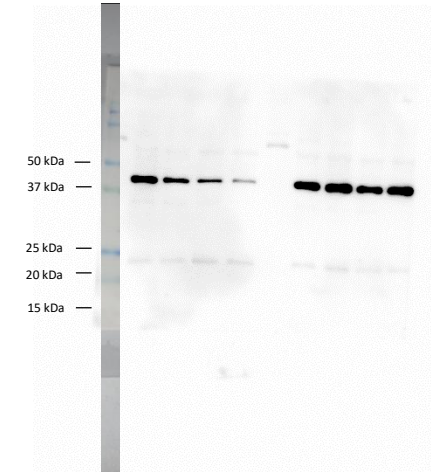
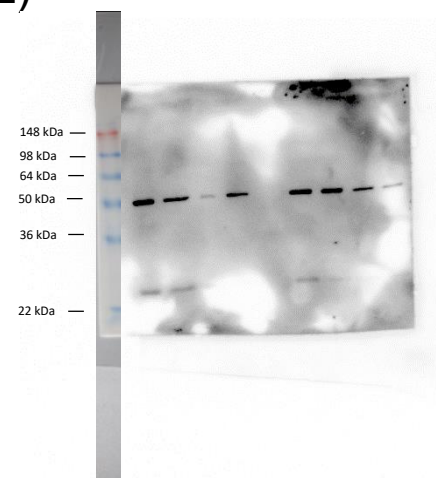
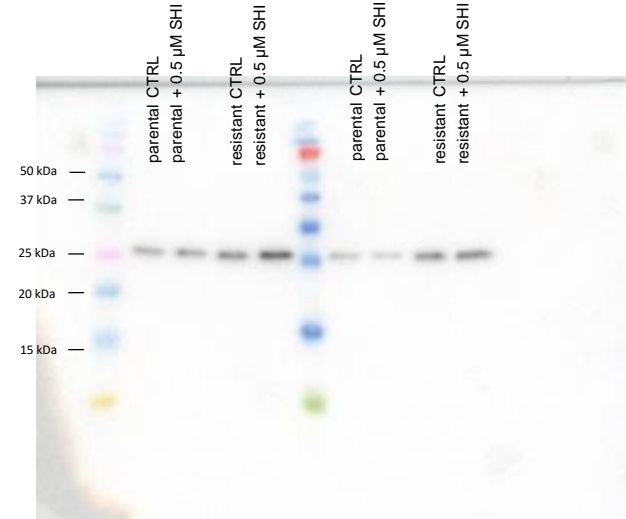
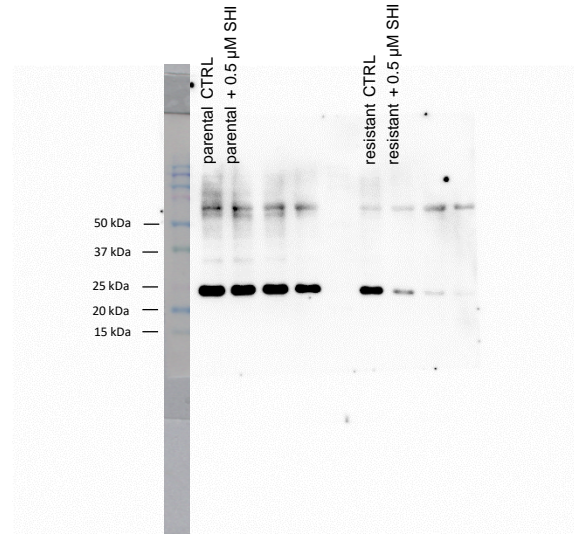
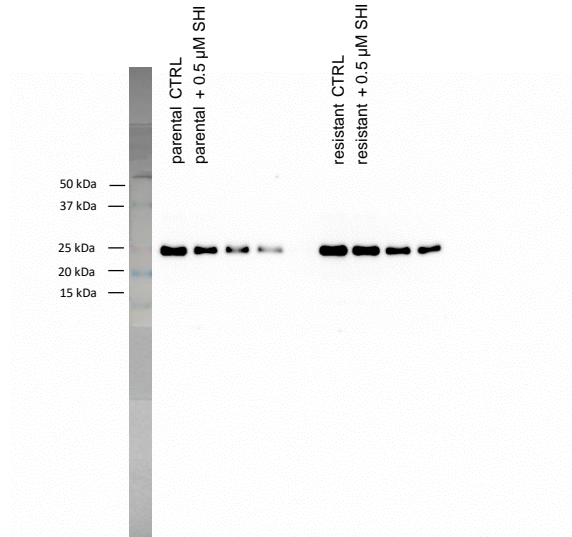
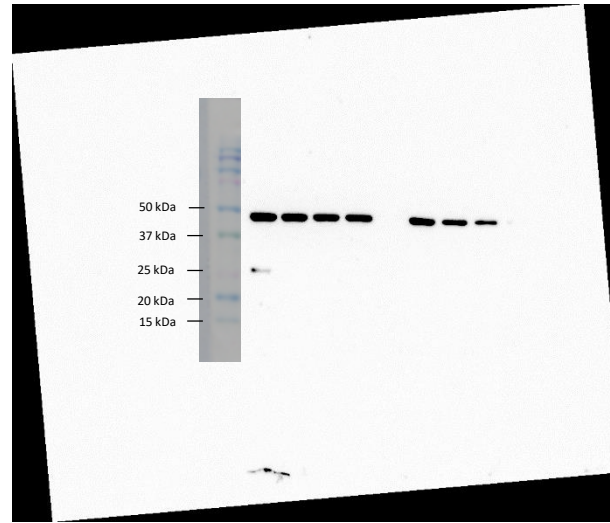
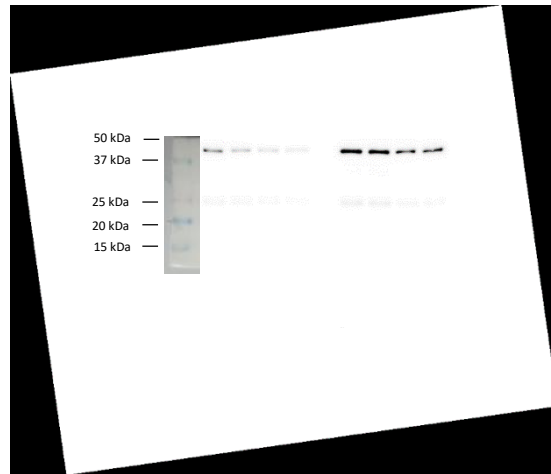


Figure S2a: Detailed information about Figure 6 - Protein expression profile of cell cycle regulating proteins in parental and DX-resistant DU145 cells. Protein expression of p21 (1), corresponding protein expression of β -actin (2).

(1)



(2)

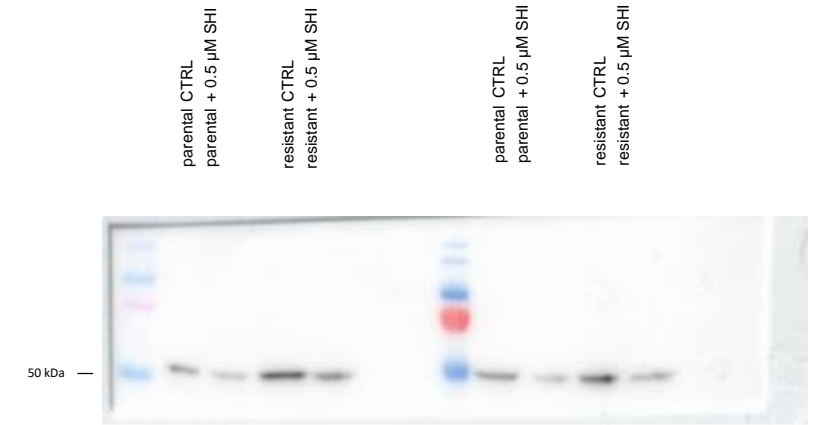
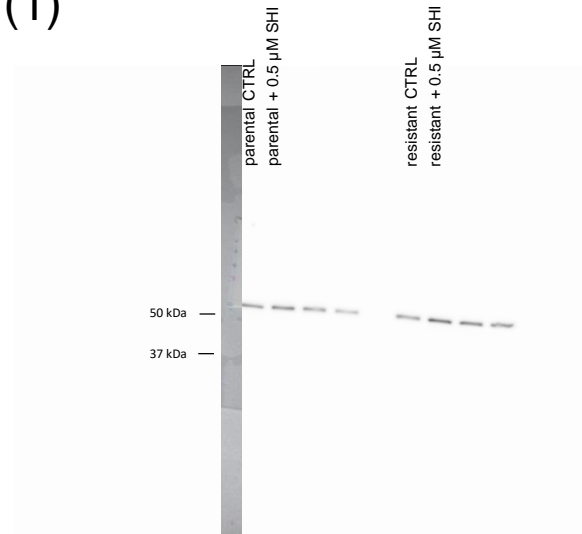


p27 (27 kDa)

β-actin (45 kDa)

Figure S2b: Detailed information about Figure 6 - Protein expression profile of cell cycle regulating proteins in parental and DX-resistant DU145 cells. Protein expression of p27 (1), corresponding protein expression of β-actin (2).

(1)



(2)

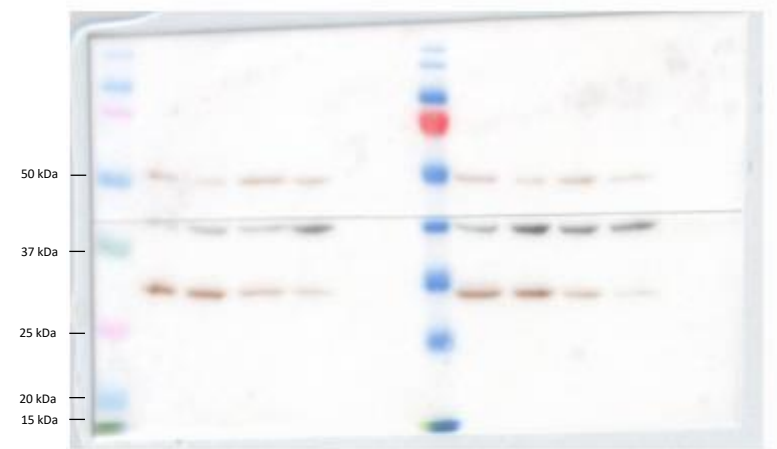
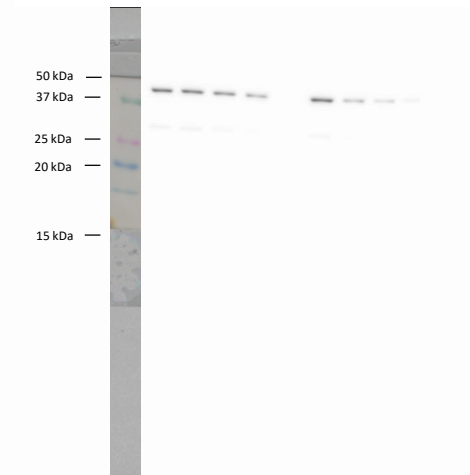
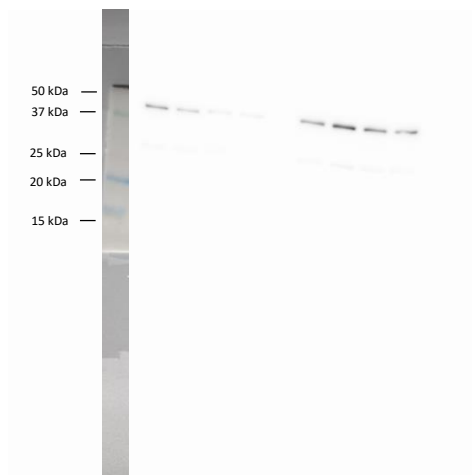
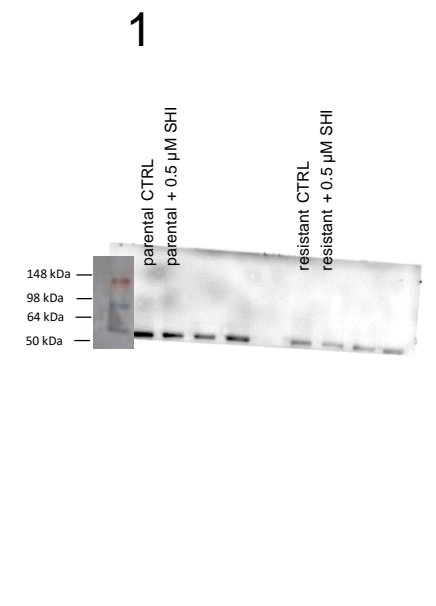
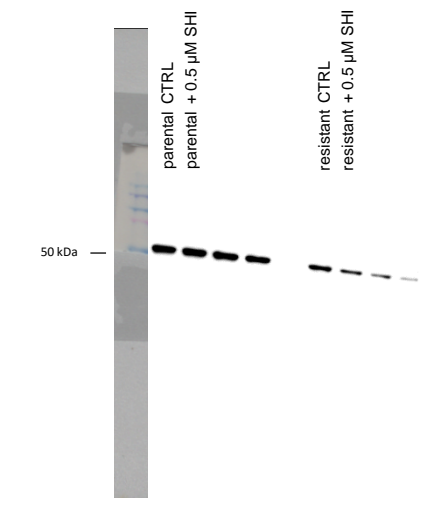


Figure S2c: Detailed information about Figure 6 - Protein expression profile of cell cycle regulating proteins in parental and DX-resistant DU145 cells. Protein expression of Cyclin A (1), corresponding protein expression of β-actin (2).

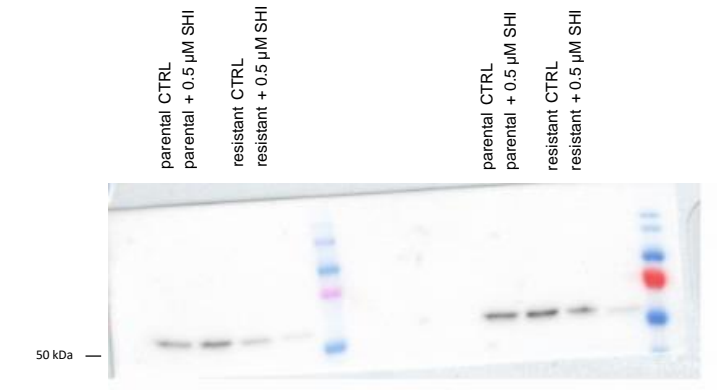
(1)



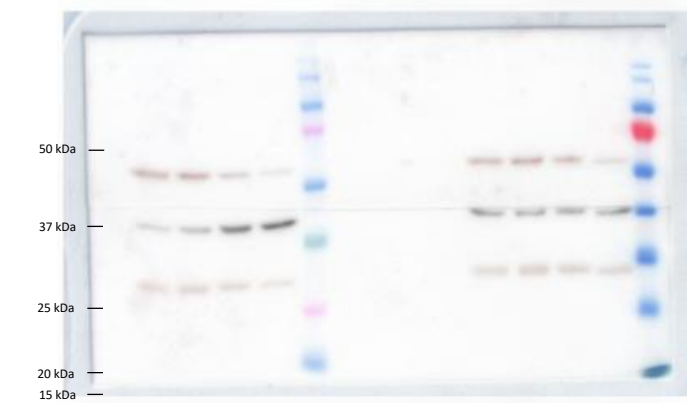
2



3



4



(2)

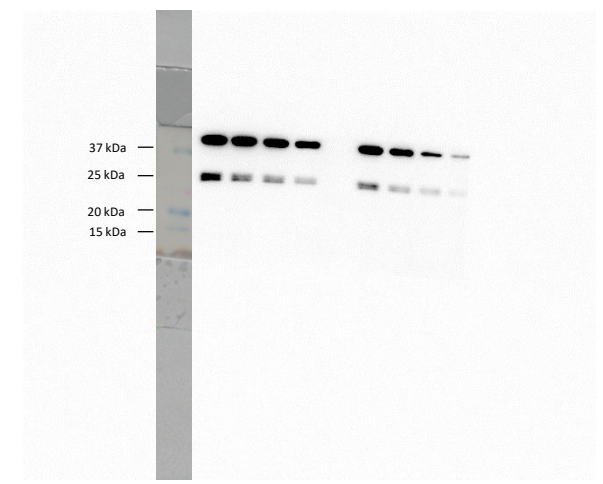
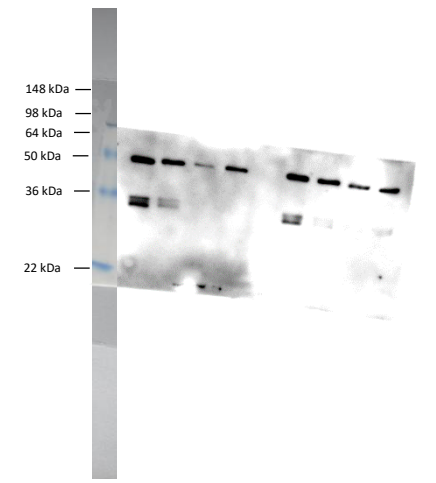
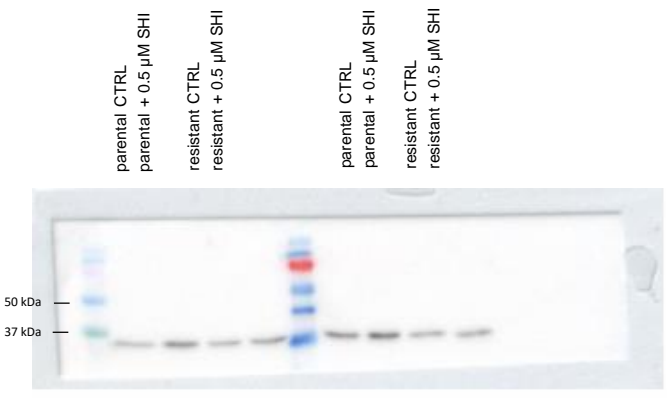
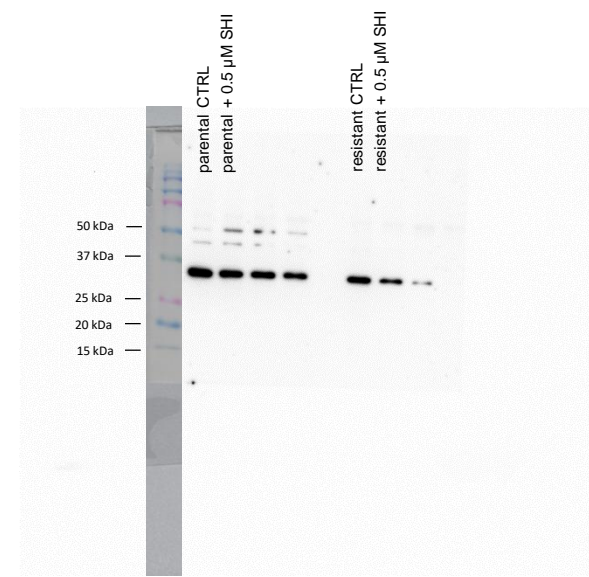
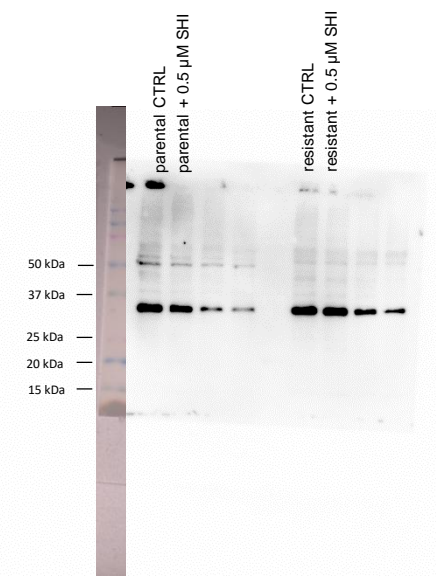


Figure S2d: Detailed information about Figure 6 - Protein expression profile of cell cycle regulating proteins in parental and DX-resistant DU145 cells. Protein expression of Cyclin B (1), corresponding protein expression of β -actin (2).

Cyclin D1 (36 kDa)

(1)



β-actin (45 kDa)

(2)

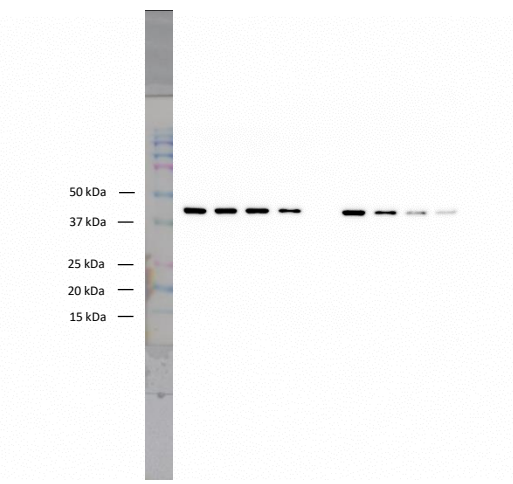
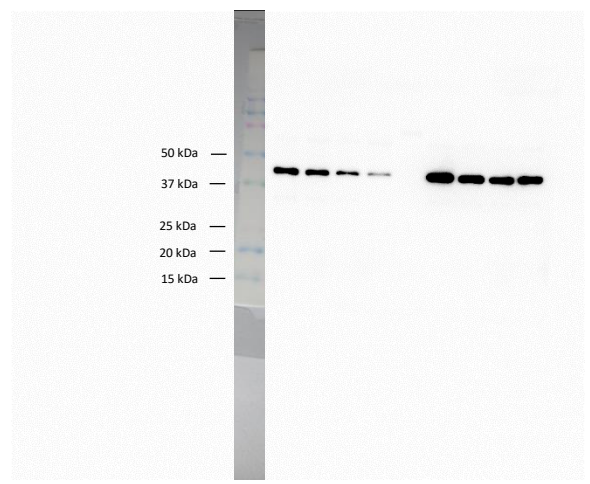
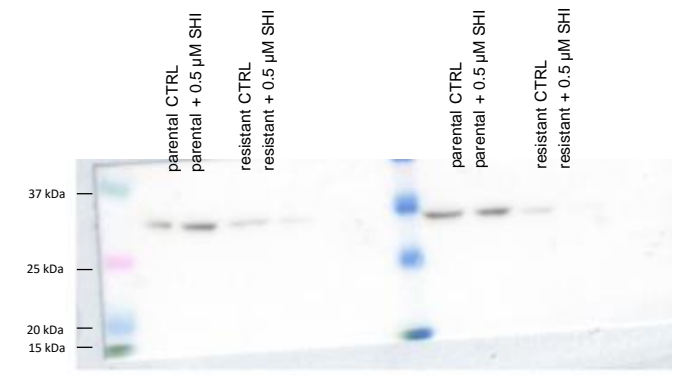
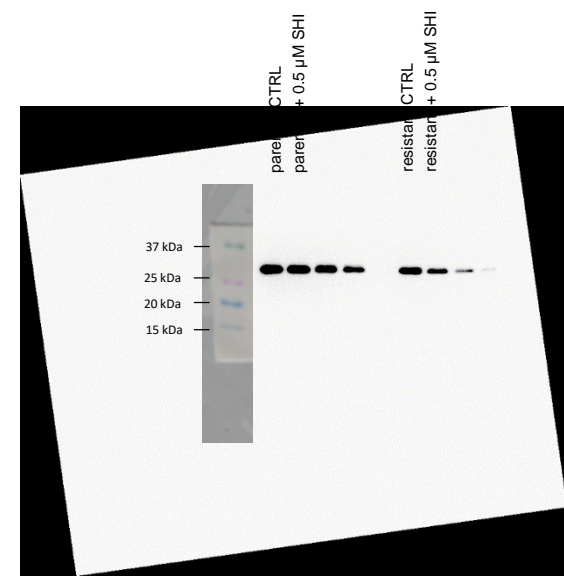
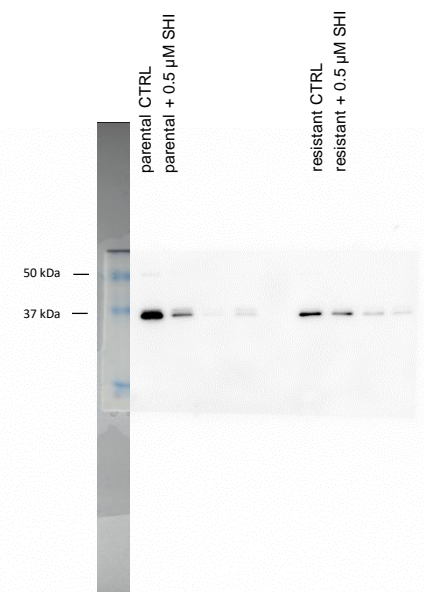


Figure S2e: Detailed information about Figure 6 - Protein expression profile of cell cycle regulating proteins in parental and DX-resistant DU145 cells. Protein expression of Cyclin D1 (1), corresponding protein expression of β-actin (2).

(1)



(2)

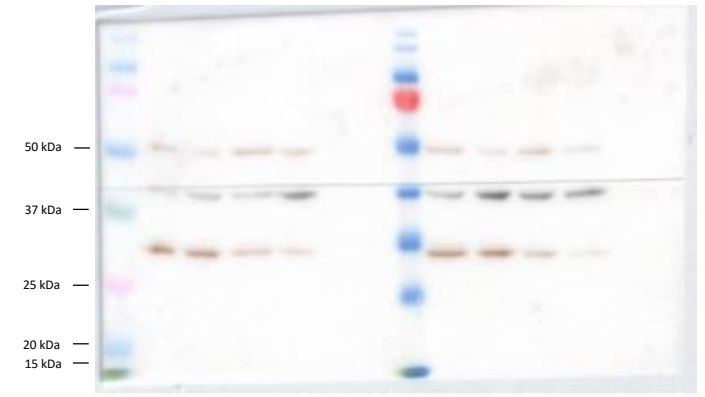
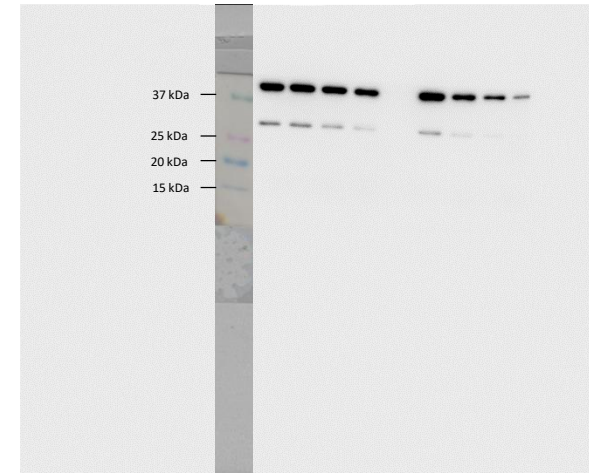
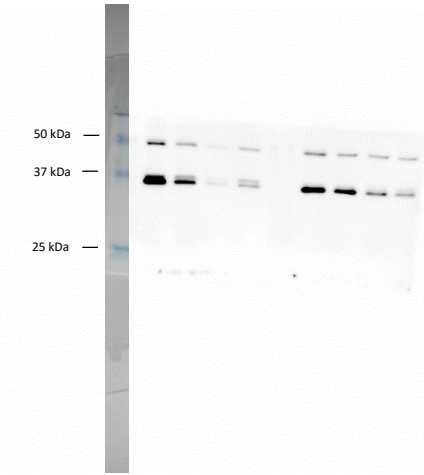
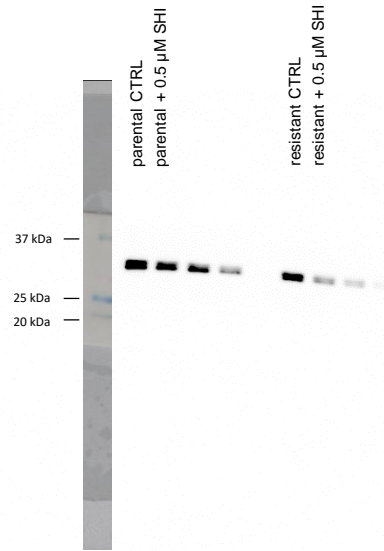


Figure S2f: Detailed information about Figure 6 - Protein expression profile of cell cycle regulating proteins in parental and DX-resistant DU145 cells. Protein expression of CDK1 (1), corresponding protein expression of β-actin (2).

DU145 – CDK2

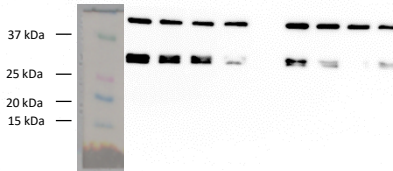
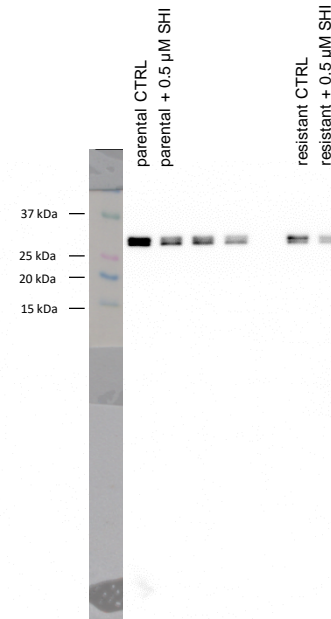
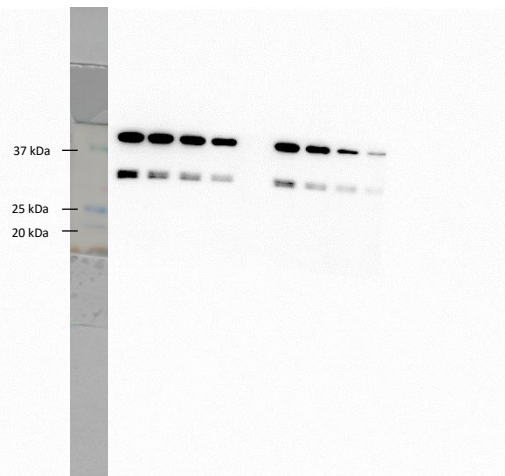
1

(1)



2

(2)



3

4

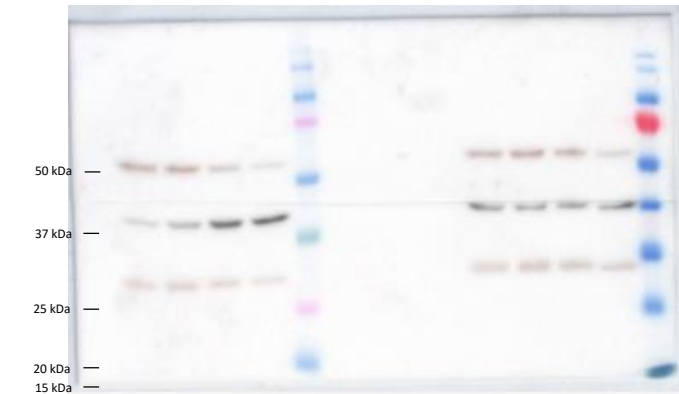


Figure S2g: Detailed information about Figure 6 - Protein expression profile of cell cycle regulating proteins in parental and DX-resistant DU145 cells. Protein expression of CDK2 (1), corresponding protein expression of β -actin (2).

DU145 – pCDK2

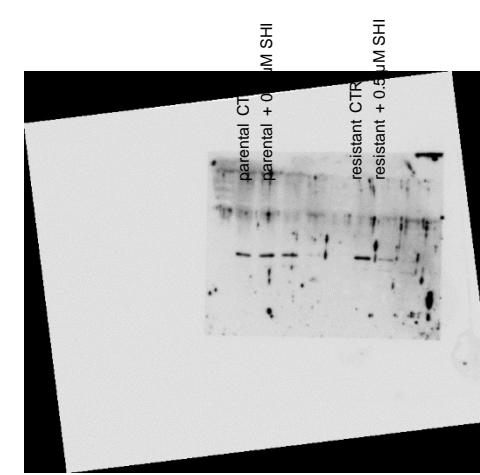
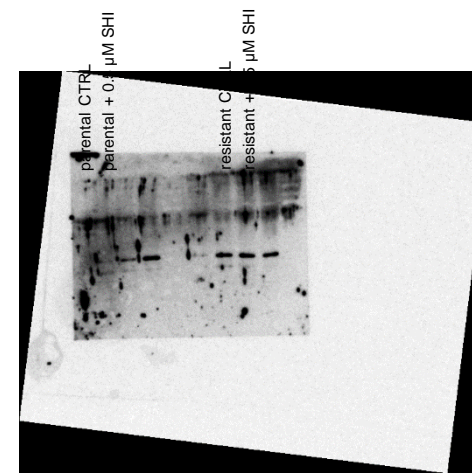
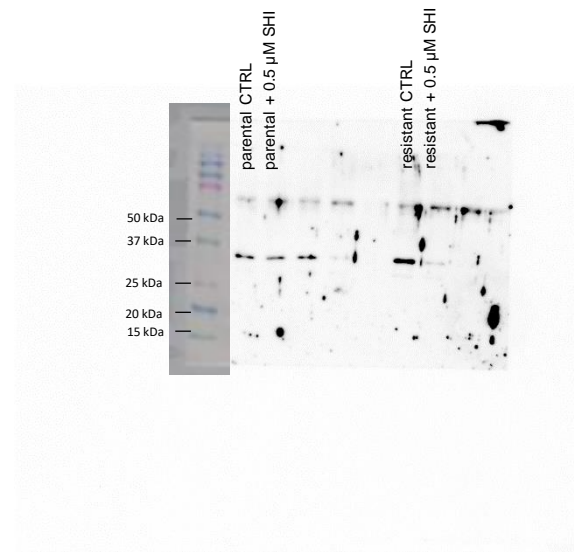
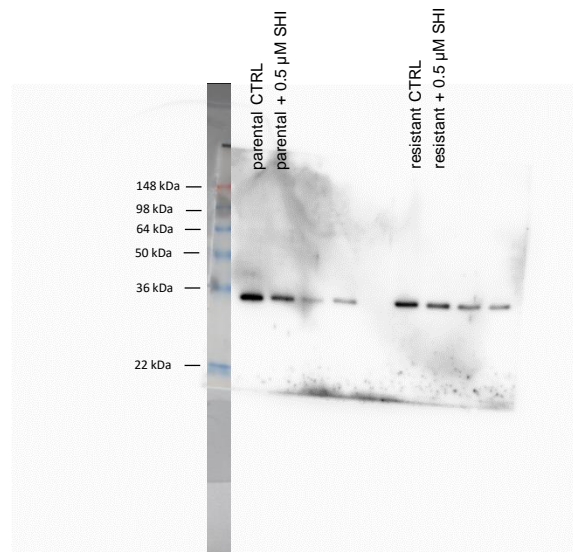
1

2

3

4

(1)



(2)

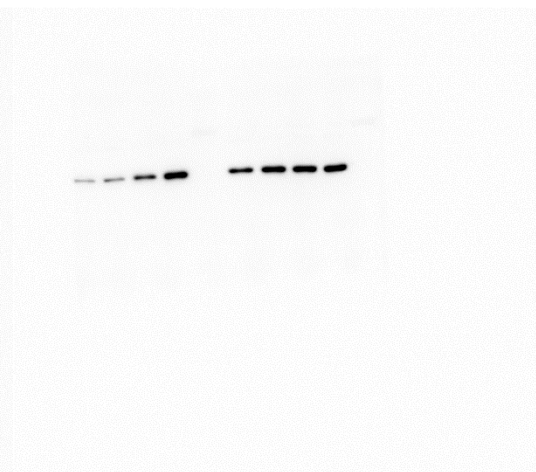
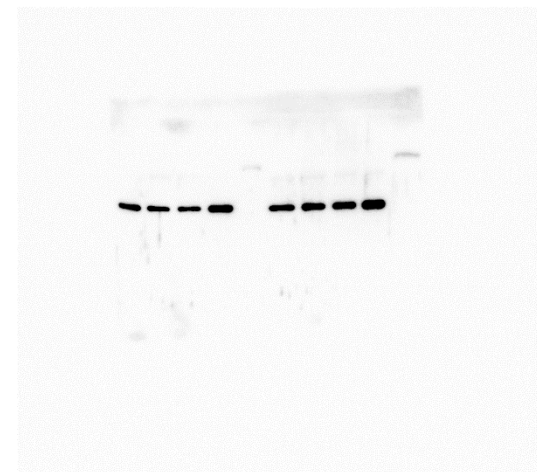
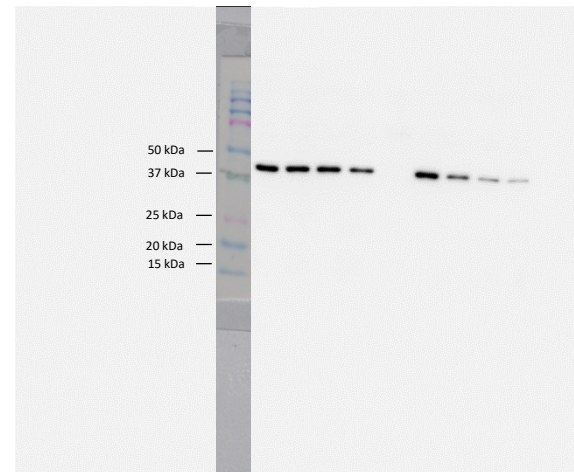
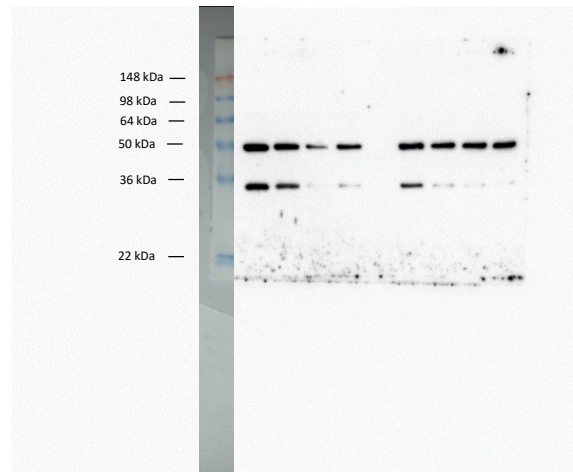
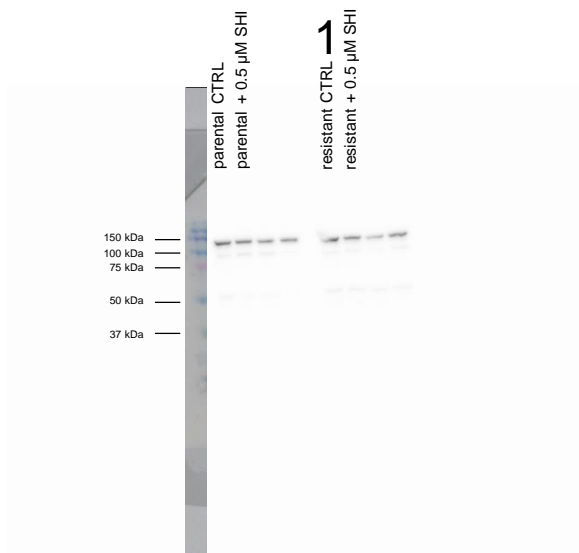


Figure S2h: Detailed information about Figure 6 - Protein expression profile of cell cycle regulating proteins in parental and DX-resistant DU145 cells. Protein expression of pCDK2 (1), corresponding protein expression of β-actin (2).

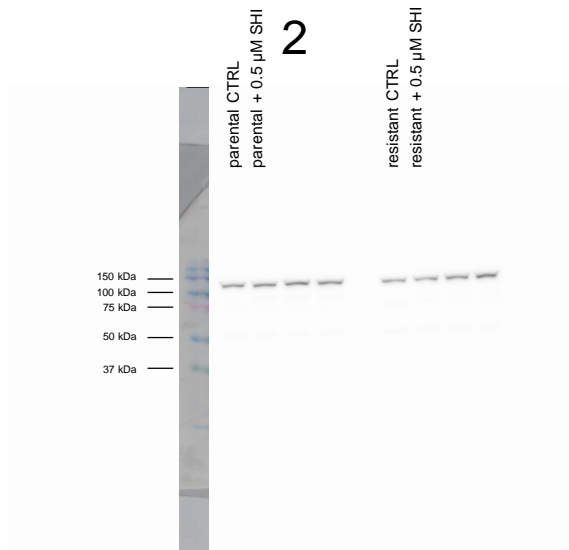
DU145 – PARP

PARP (116 kDa)
Coomassie staining

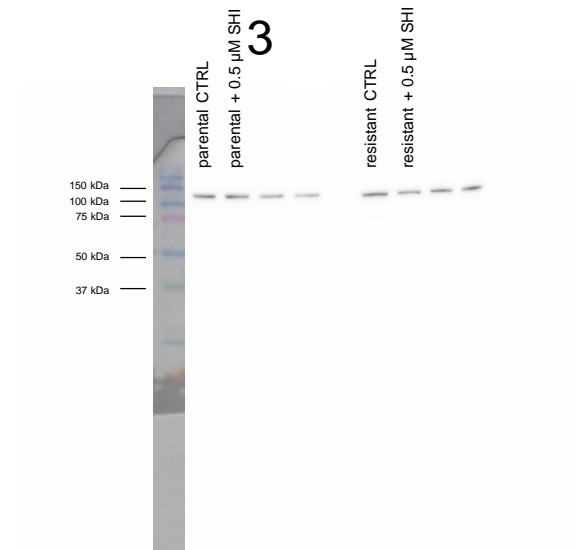
(1)



2



3



(2)

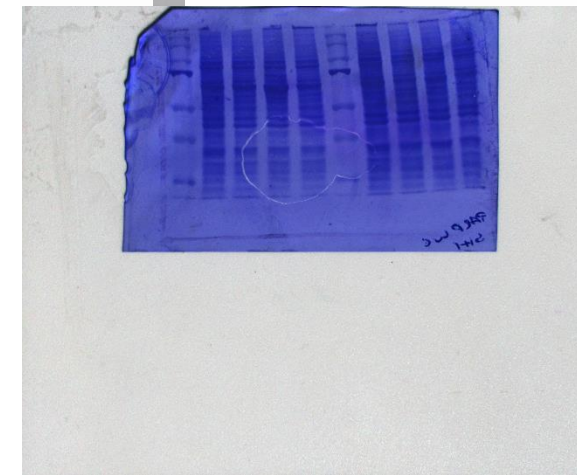
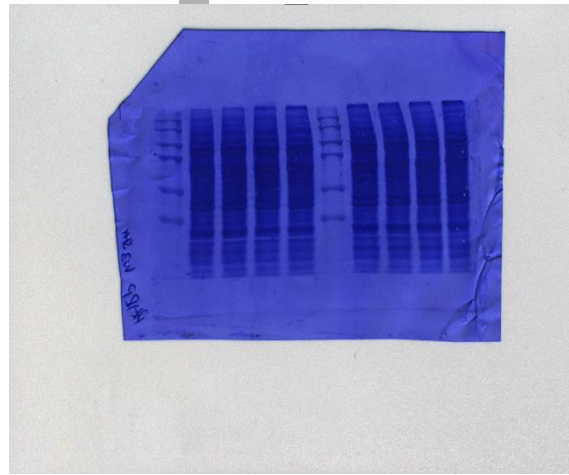
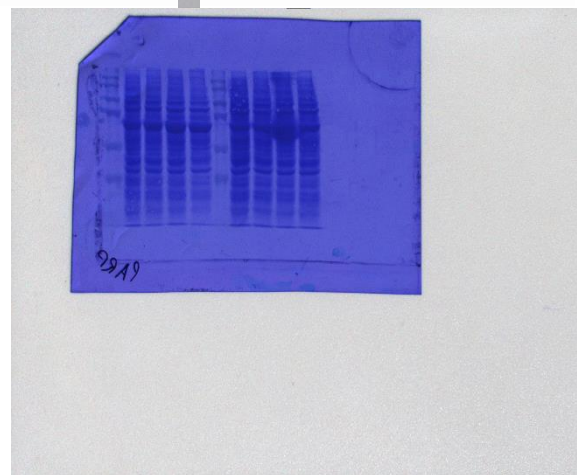


Figure S3: Detailed information about Figure 8h - Protein expression profile of PARP in parental and DX-resistant DU145 cells. Protein expression of PARP (1), corresponding Coomassie blue staining of total protein (2).

DU145 – Caspase 3

Caspase 3 (35 kDa)

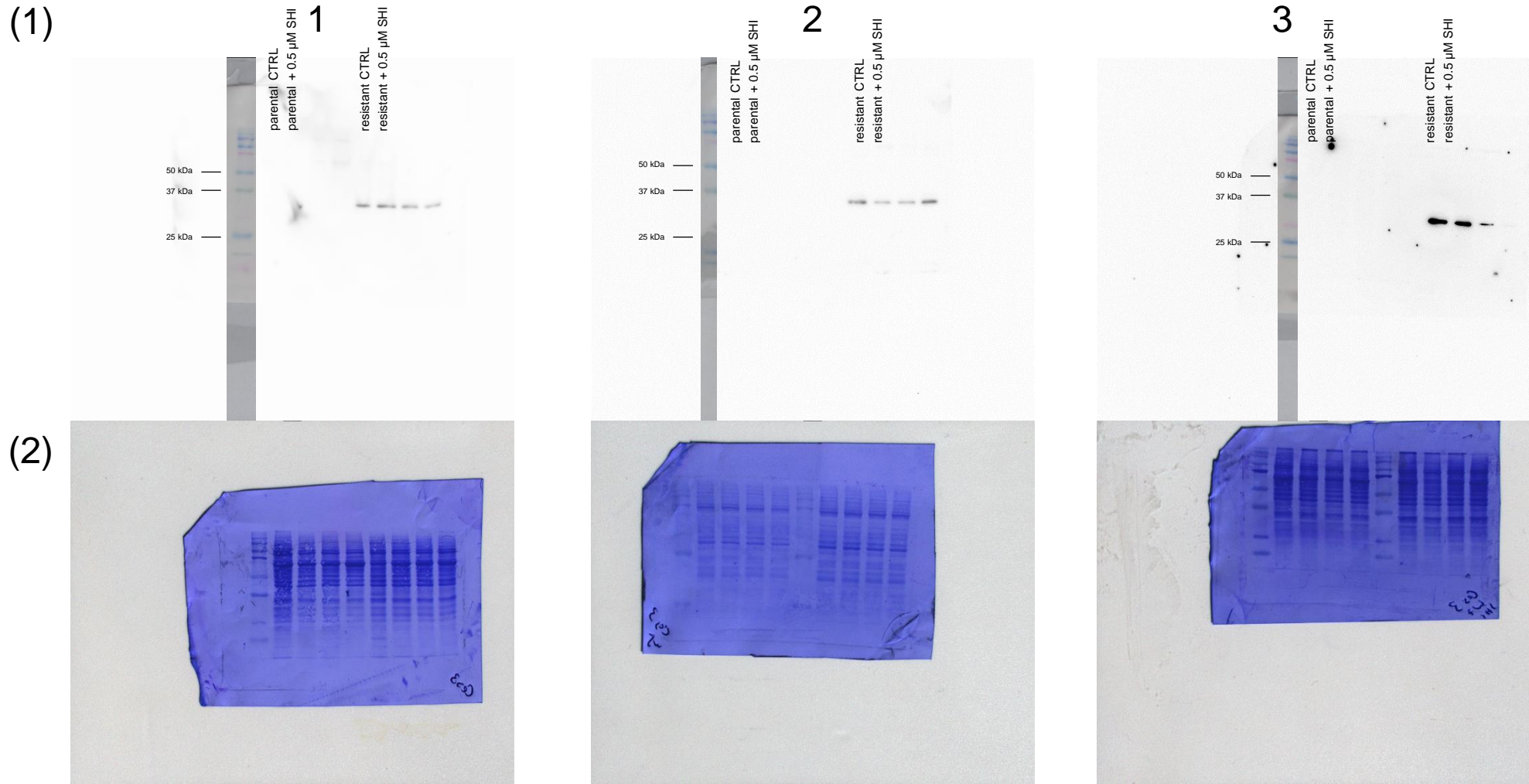
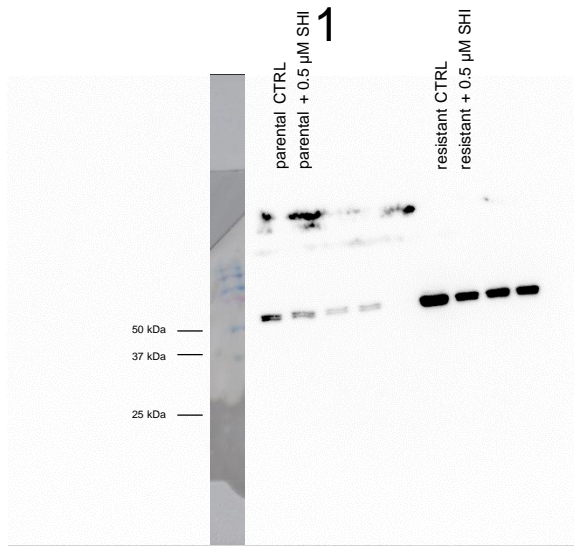


Figure S4: Detailed information about Figure 8i - Protein expression profile of Caspase 3 in parental and DX-resistant DU145 cells. Protein expression of Caspase 3 (1), corresponding Coomassie blue staining of total protein (2).

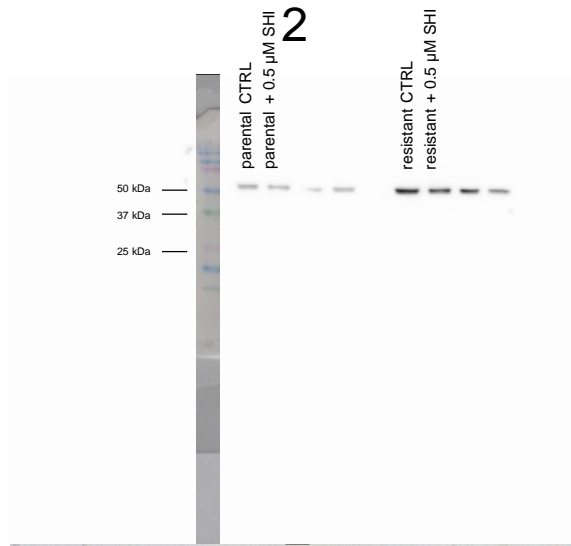
DU145 – Caspase 8

Coomassie staining Caspase 8 (57 kDa)

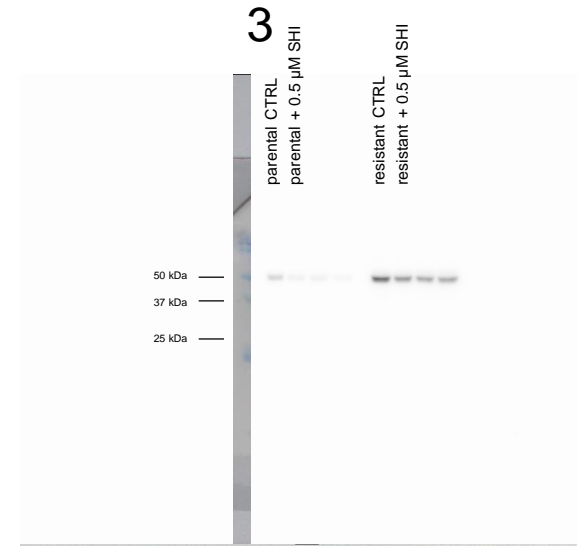
(1)



2



3



(2)

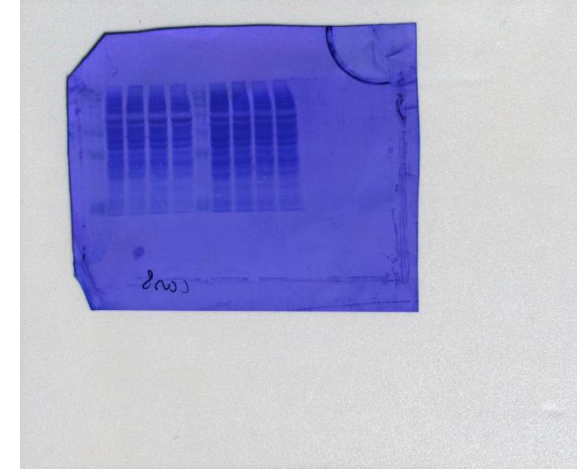
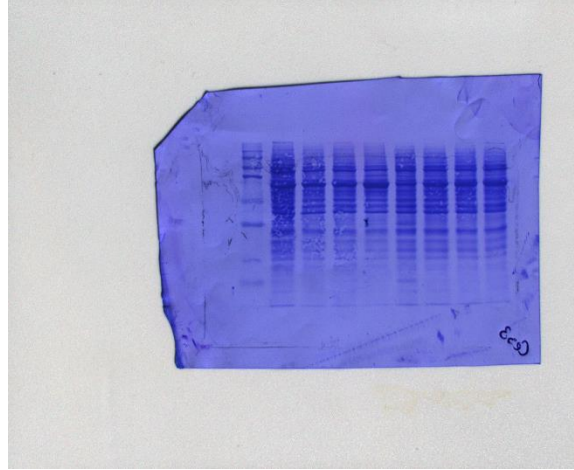
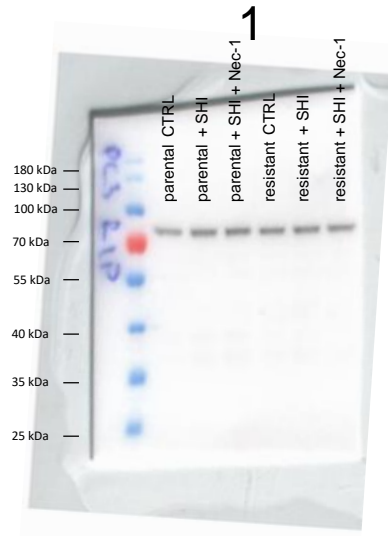
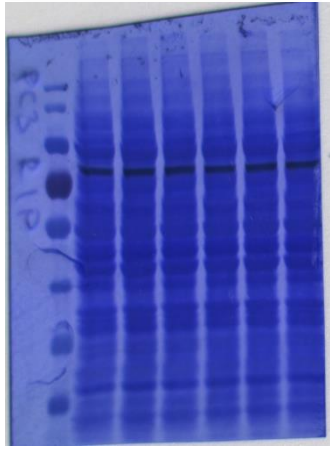


Figure S5: Detailed information about Figure 8j - Protein expression profile of Caspase 8 in parental and DX-resistant DU145 cells. Protein expression of Caspase 8 (1), corresponding Coomassie blue staining of total protein (2).

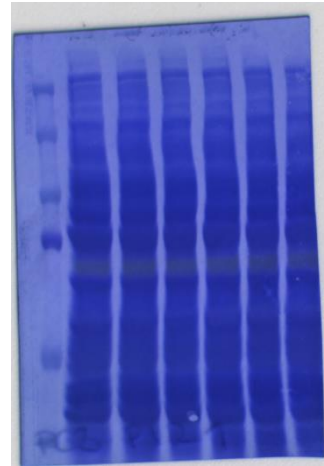
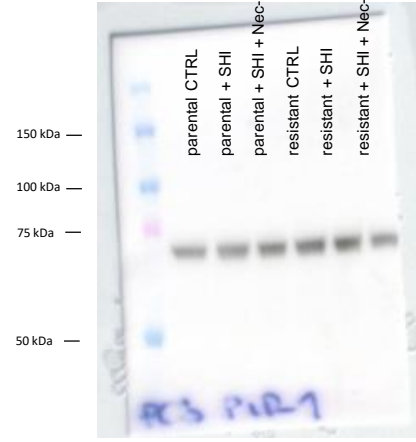
(1)



(2)



2



3

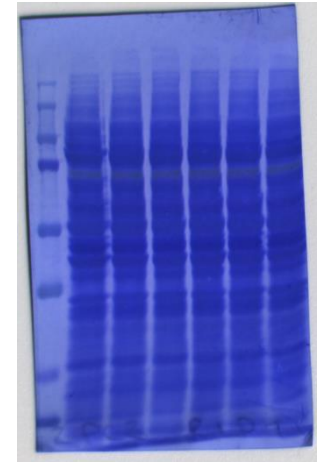
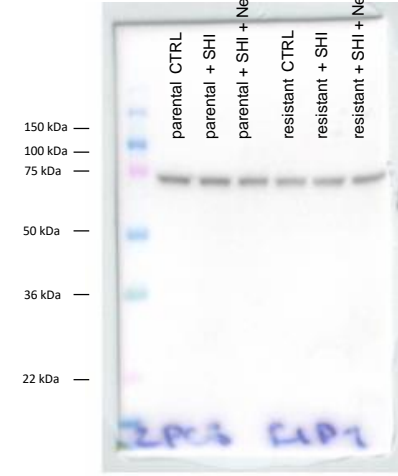
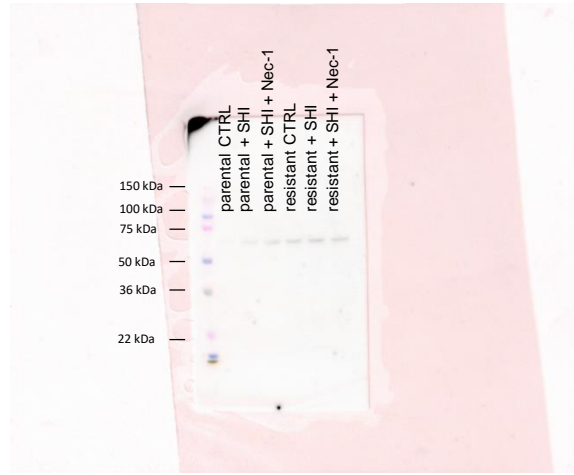


Figure S6: Detailed information about Figure 10a - Protein expression profile of RIP1 in parental and DX-resistant PC3 cells. Protein expression of RIP1 (1), corresponding Coomassie blue staining of total protein (2).

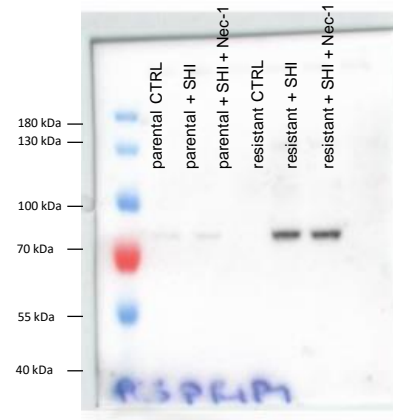
pRIP1 (78 kDa)

Coomassie staining

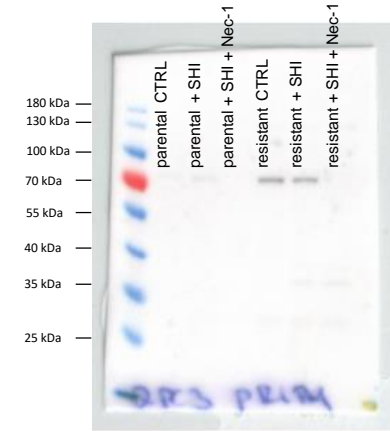
(1)



2



3



(2)

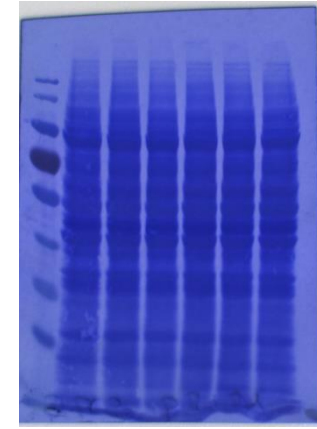
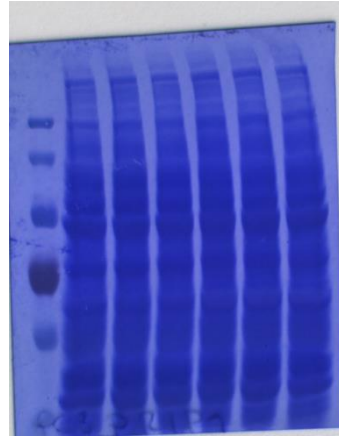
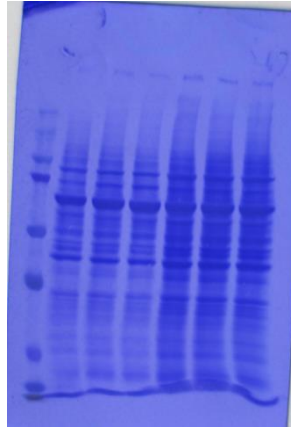
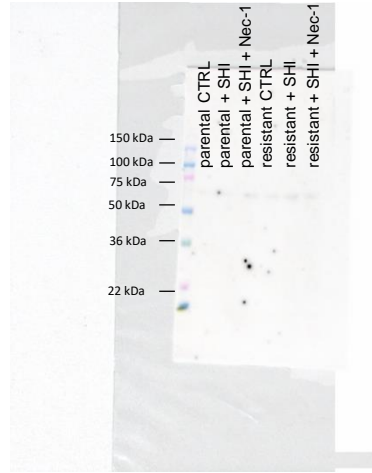
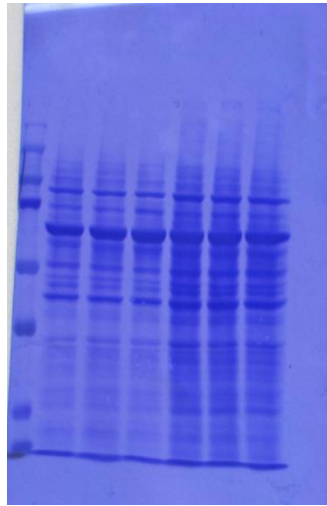


Figure S6: Detailed information about Figure 10b - Protein expression profile of pRIP1 in parental and DX-resistant PC3 cells. Protein expression of pRIP1 (1), corresponding Coomassie blue staining of total protein (2).

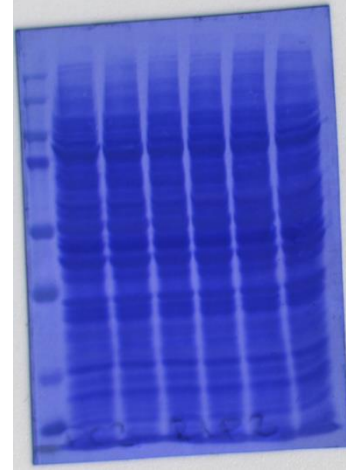
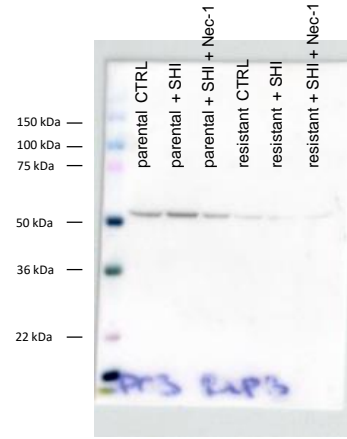
(1)



(2)



2



3

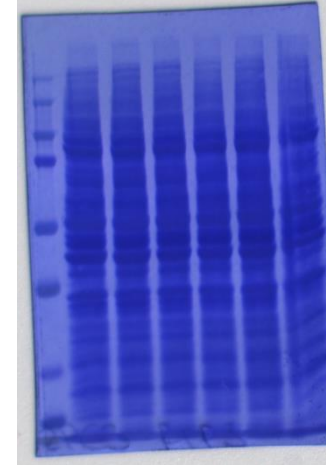
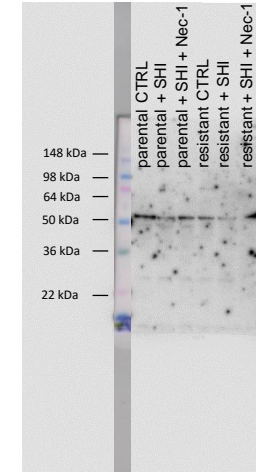
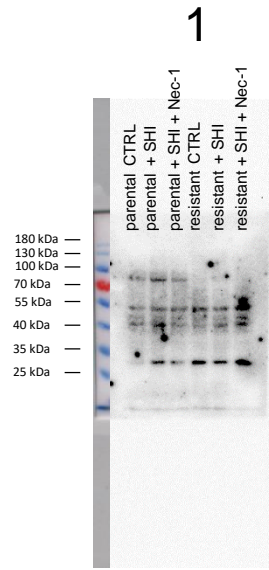


Figure S6: Detailed information about Figure 10c - Protein expression profile of RIP3 in parental and DX-resistant PC3 cells. Protein expression of RIP3 (1), corresponding Coomassie blue staining of total protein (2).

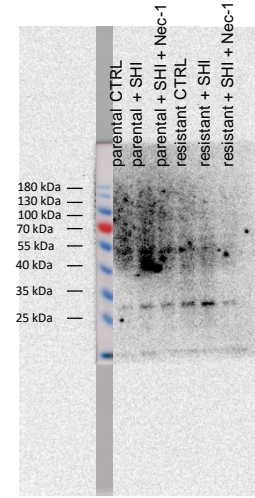
PC3 – pRIP3

Coomassie staining pRIP3 (46-62 kDa)

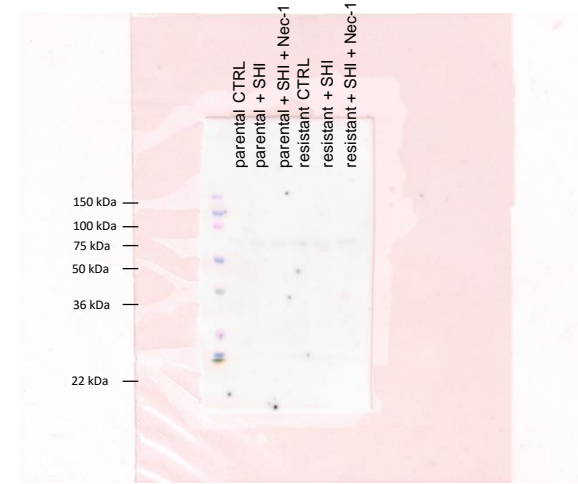
(1)



2



3



(2)

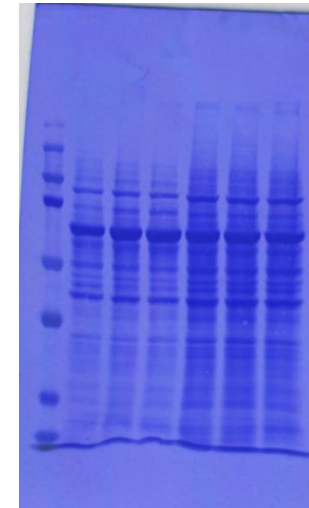
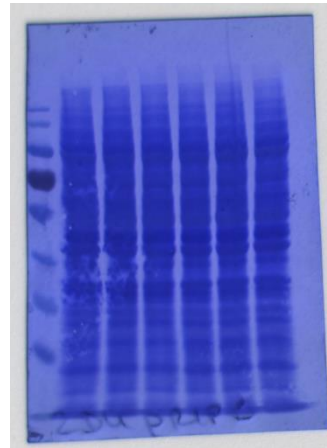
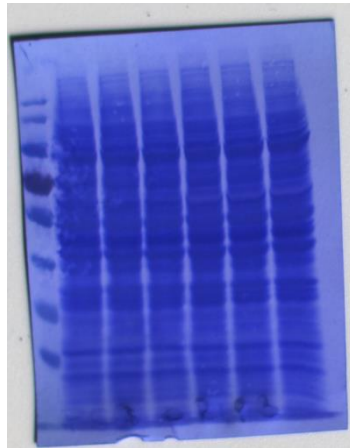


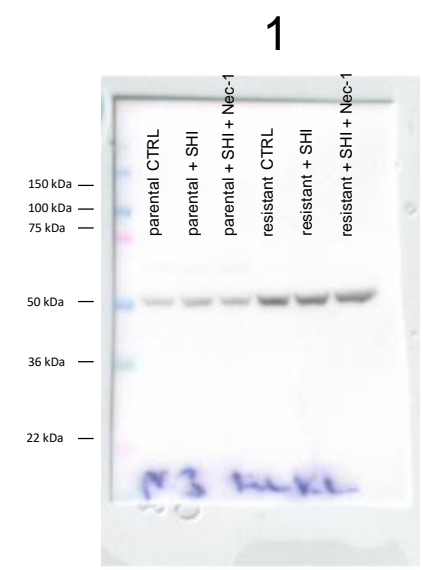
Figure S6: Detailed information about Figure 10d - Protein expression profile of pRIP3 in parental and DX-resistant PC3 cells. Protein expression of pRIP3 (1), corresponding Coomassie blue staining of total protein (2).

PC3 – MLKL

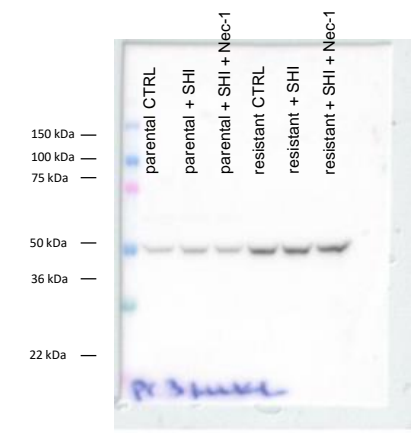
MLKL (54 kDa)

Coomassie staining

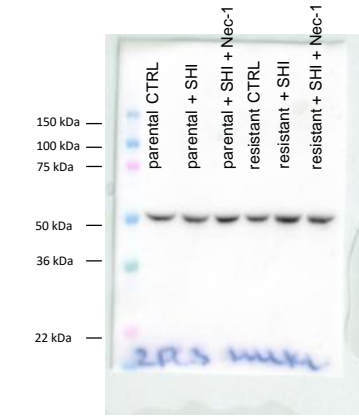
(1)



2



3



(2)

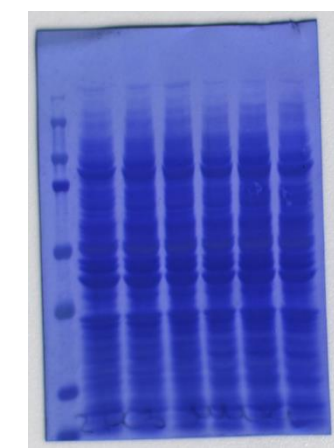
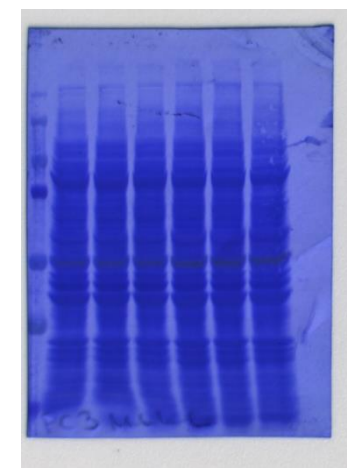
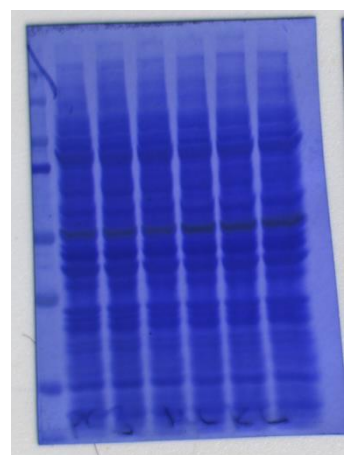


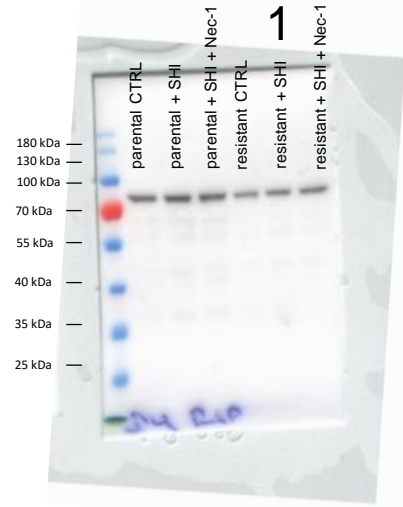
Figure S6: Detailed information about Figure 10e - Protein expression profile of MLKL in parental and DX-resistant PC3 cells. Protein expression of MLKL (1), corresponding Coomassie blue staining of total protein (2).

DU145 – RIP1

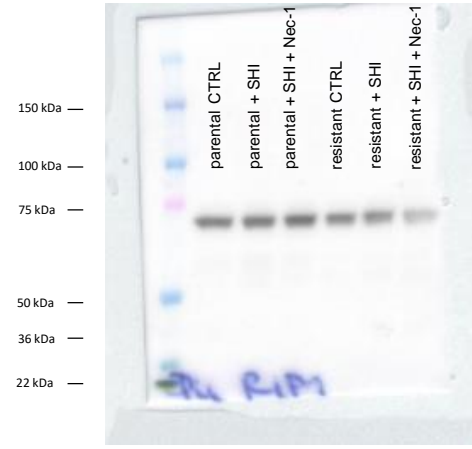
Coomassie staining

RIP1 (78 kDa)

(1)



2



3



(2)

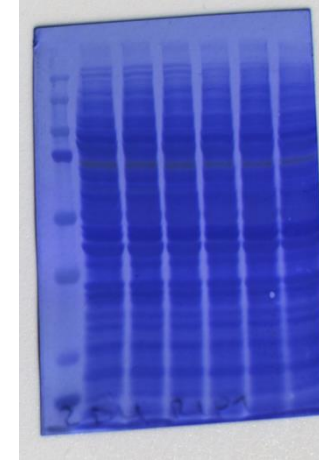
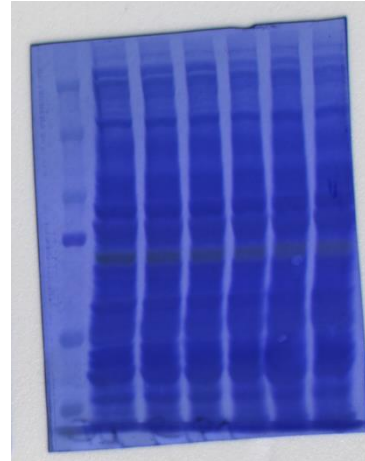
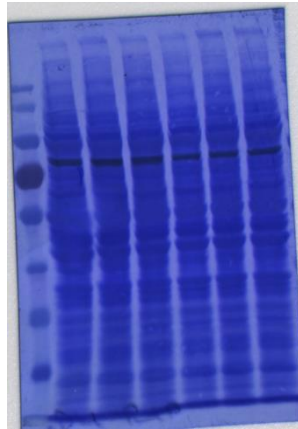


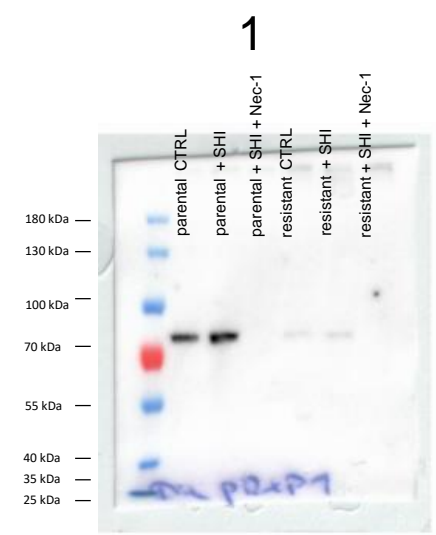
Figure S6: Detailed information about Figure 10f - Protein expression profile of RIP1 in parental and DX-resistant DU145 cells. Protein expression of RIP1 (1), corresponding Coomassie blue staining of total protein (2).

DU145 – pRIP1

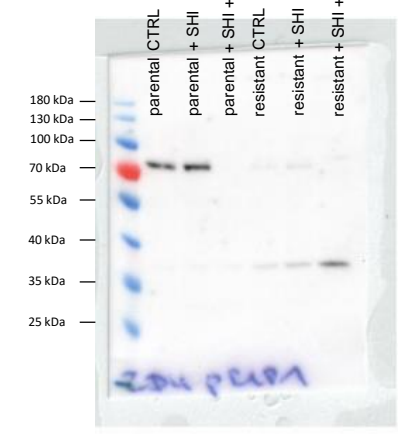
pRIP1 (78 kDa)

Coomassie staining

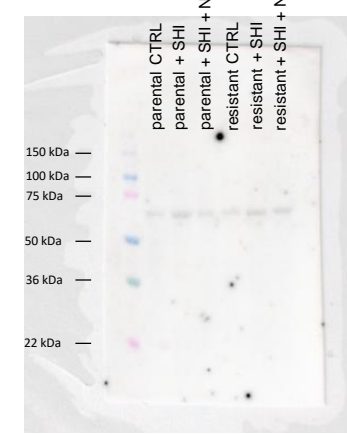
(1)



2



3



(2)

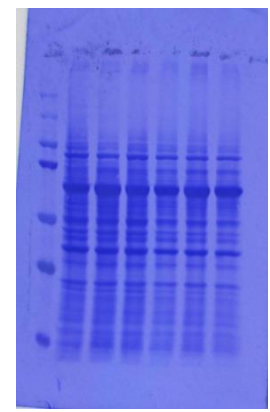
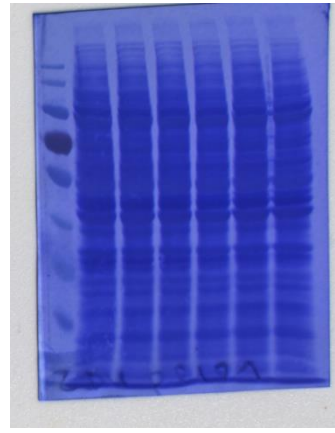
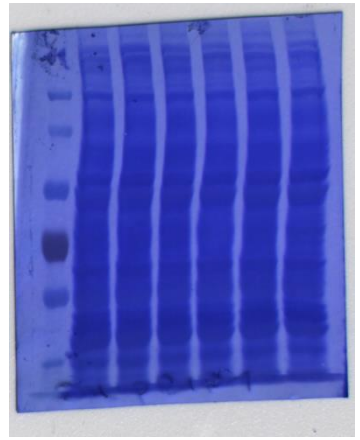
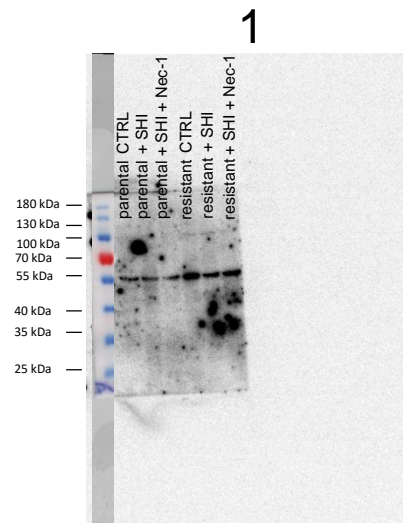


Figure S6: Detailed information about Figure 10g - Protein expression profile of pRIP1 in parental and DX-resistant DU145 cells. Protein expression of pRIP1 (1), corresponding Coomassie blue staining of total protein (2).

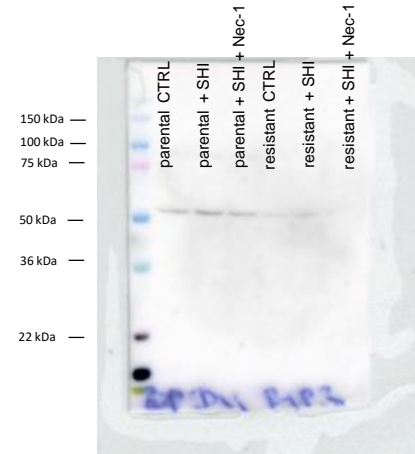
DU145 – RIP3

RIP3 (46-62 kDa)
Coomassie staining

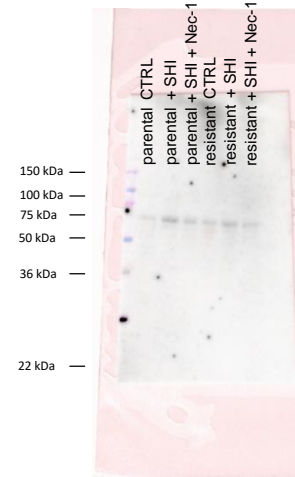
(1)



2



3



(2)

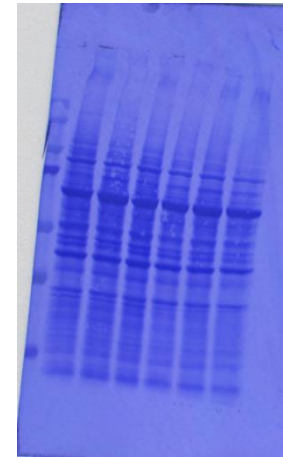
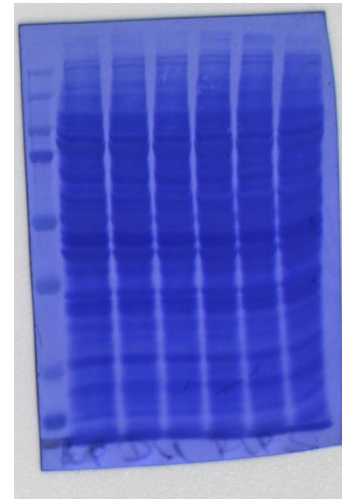
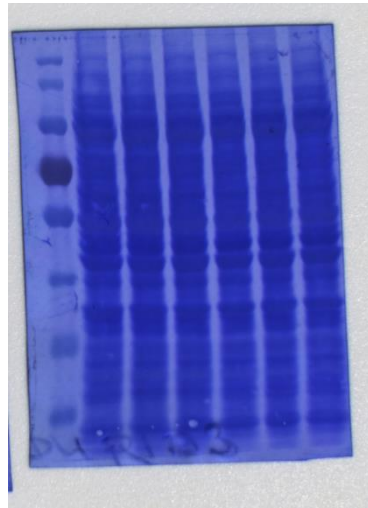
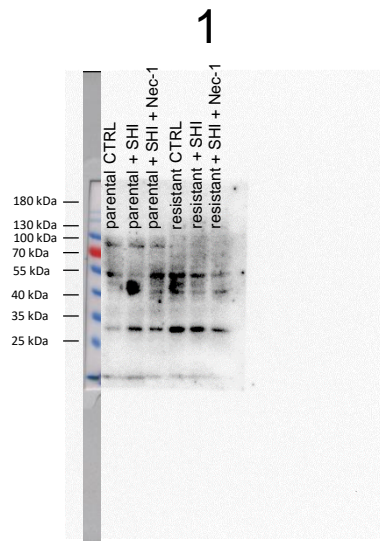


Figure S6: Detailed information about Figure 10h - Protein expression profile of RIP3 in parental and DX-resistant DU145 cells. Protein expression of RIP3 (1), corresponding Coomassie blue staining of total protein (2).

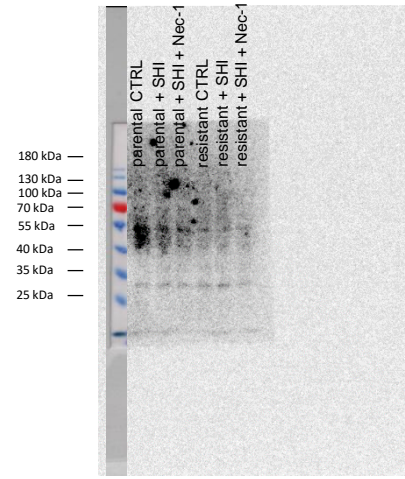
DU145 – pRIP3

Coomassie staining pRIP3 (46-62 kDa)

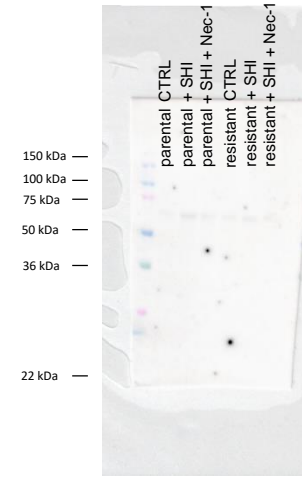
(1)



2



3



(2)

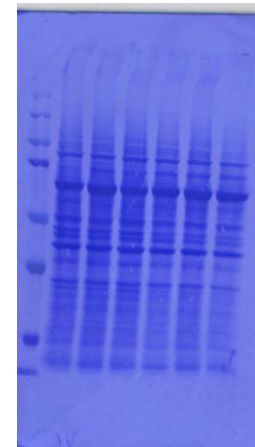
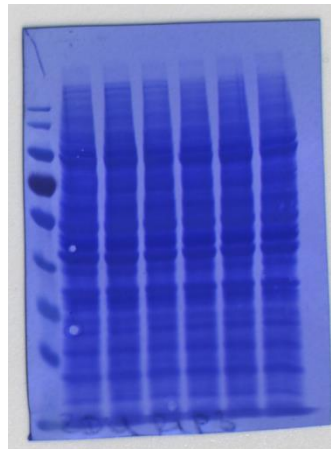
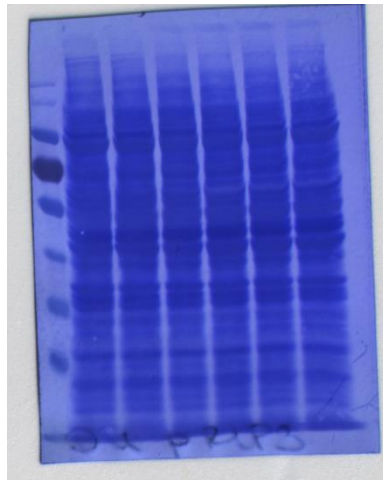


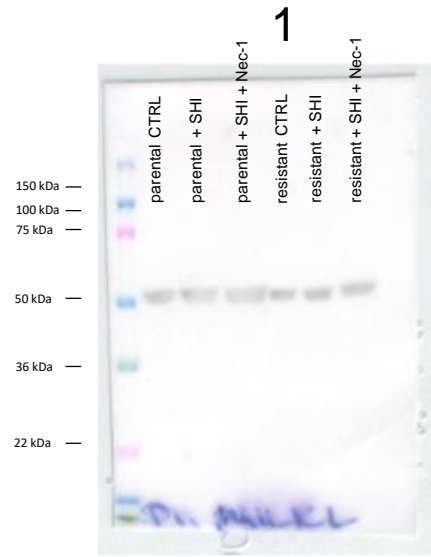
Figure S6: Detailed information about Figure 10i - Protein expression profile of pRIP3 in parental and DX-resistant DU145 cells. Protein expression of pRIP3 (1), corresponding Coomassie blue staining of total protein (2).

DU145 – MLKL

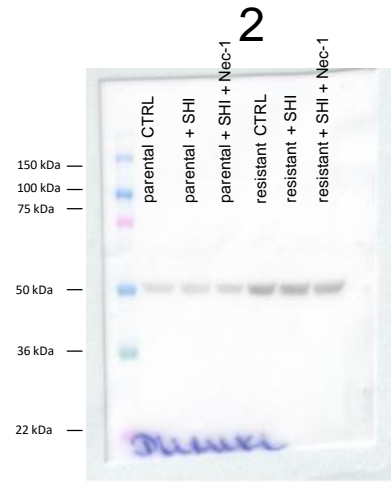
MLKL (54 kDa)

Coomassie staining

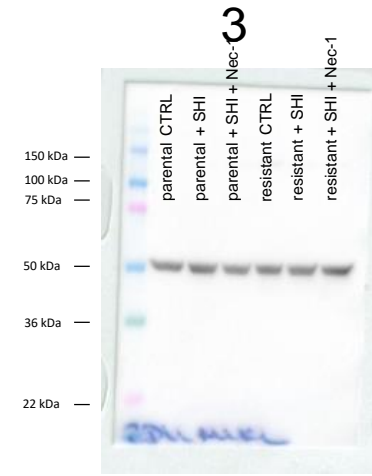
(1)



2



3



(2)

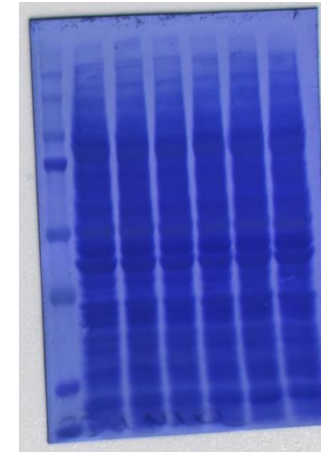
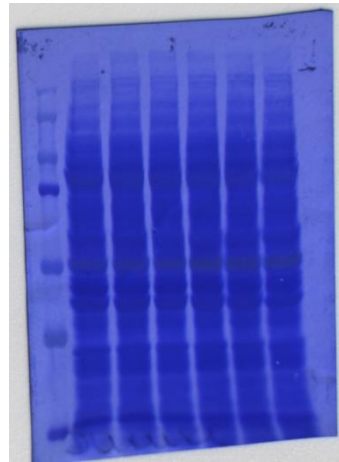
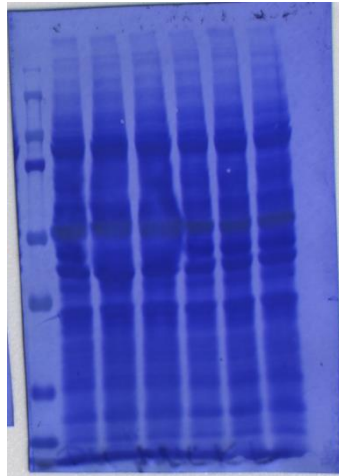


Figure S6: Detailed information about Figure 10j - Protein expression profile of MLKL in parental and DX-resistant DU145 cells. Protein expression of MLKL (1), corresponding Coomassie blue staining of total protein (2).

(a) (b)

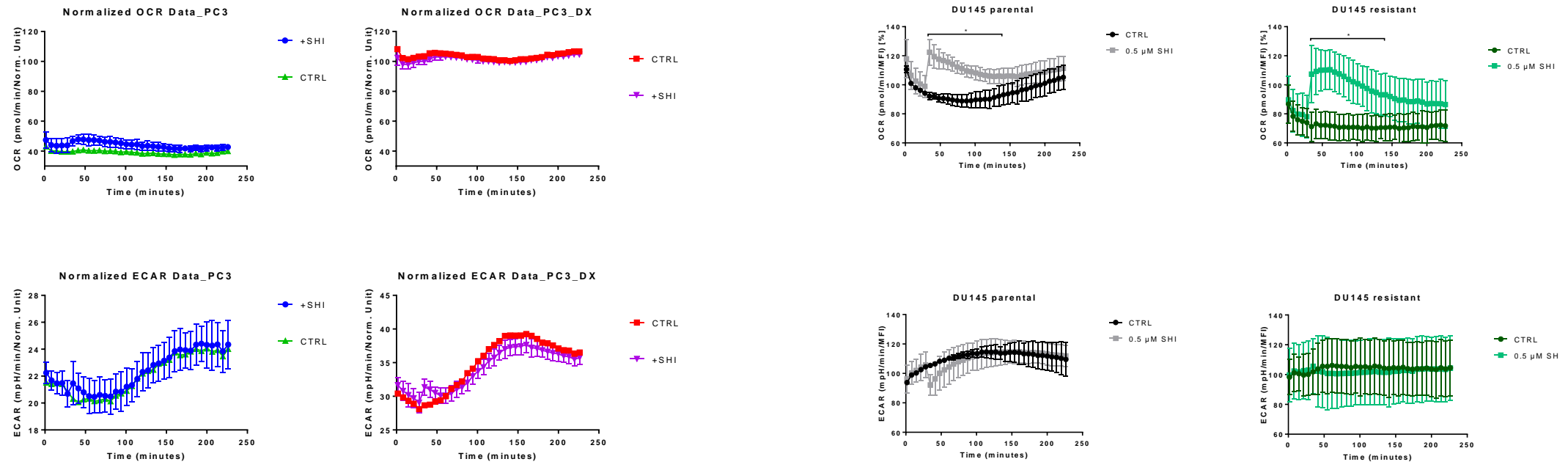


Figure S7: Detailed information about section 2.6 - Shikonin showed no effects on metabolism. Oxygen consumption rate (OCR) (top) and extracellular acidification rate (ECAR) (bottom) of PC3 and PC3_DX (a) as well as DU145 and DU145_DX (b) cells. Parental and DX-resistant cells untreated or treated with SHI 0.5 μM for 20 h (n = 3).