

Supplemental material: Polatuzumab vedotin as a salvage and bridging treatment in relapsed or refractory large B-cell lymphomas

Nora Liebers, Johannes Duell, Donnacha Fitzgerald, Andrea Kerkhoff, Daniel Noerenberg, Eva Kaebisch, Fabian Acker, Stephan Fuhrmann, Corinna Leng, Manfred Welslau, Jens Chemnitz, Jan-Moritz Middeke, Thomas Weber, Udo Holtick, Ralf Trappe, Roald Pfannes, Ruediger Liersch, Christian Spoer, Stefan Fuxius, Niklas Gebauer, Léandra Caillé, Thomas Geer, Christian Koenecke, Ulrich Keller, Rainer Claus, Dimitrios Mouggiakakos, Stephanie Mayer, Andreas Huettmann, Christiane Pott, Arne Trummer, Gerald Wulf, Uta Brunnberg, Lars Bullinger, Georg Hess, Carsten Mueller-Tidow, Bertram Glass, Georg Lenz, Peter Dreger, Sascha Dietrich

SUPPLEMENTAL FIGURES

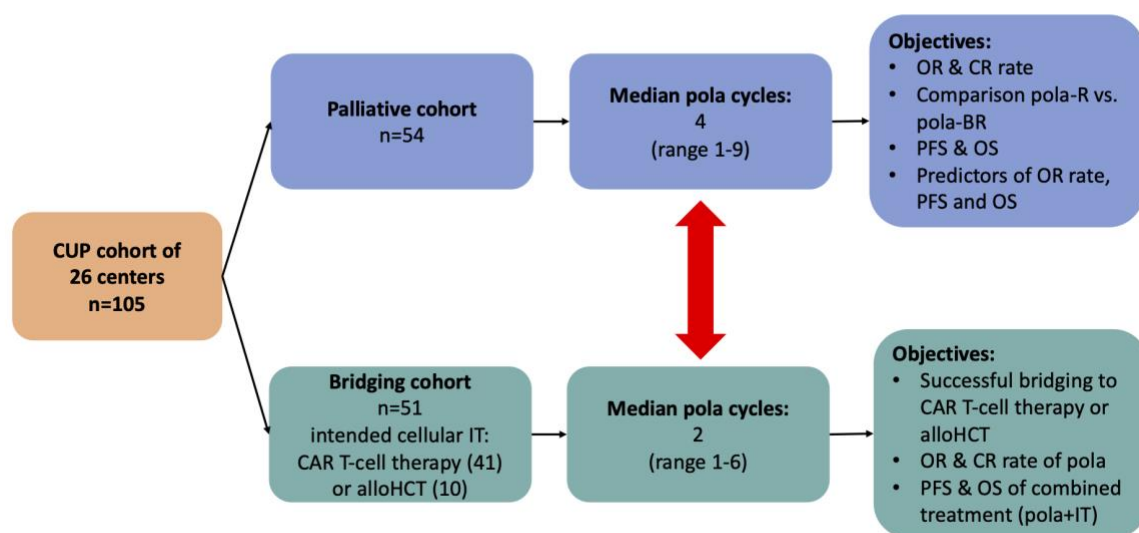


Figure S1: Study cohorts and objectives

Abbreviations: CUP, Compassionate Use Program; IT, immunotherapy; CAR, chimeric antigen receptor; alloHCT, allogeneic hematopoietic cell transplantation; pola, polatuzumab vedotin; OR, overall response; CR, complete response; pola-R; polatuzumab vedotin-rituximab; pola-BR; polatuzumab vedotin-bendamustine-rituximab; PFS, Progression-free survival, OS, overall survival

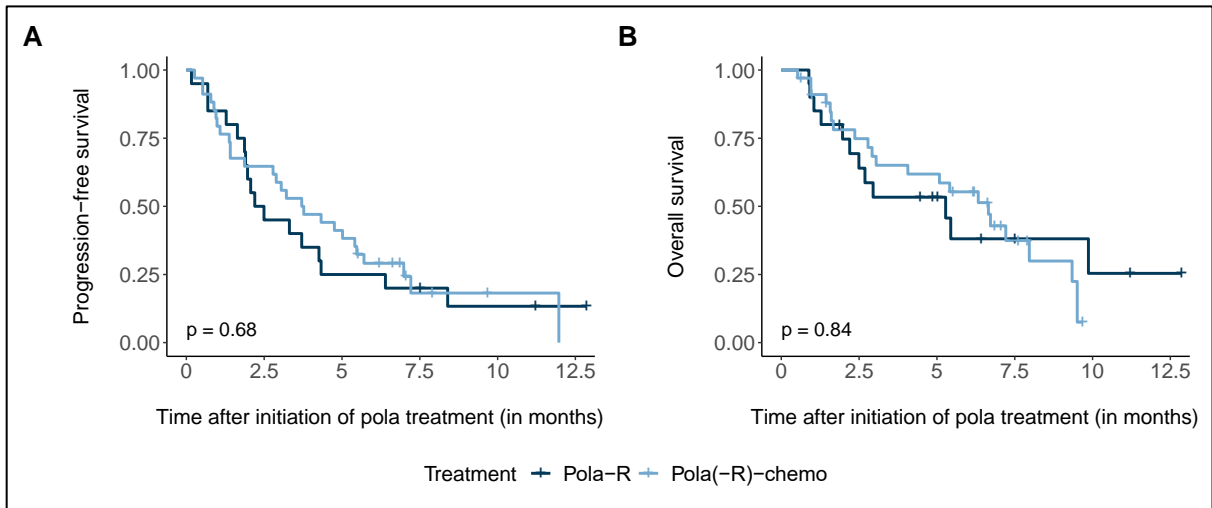


Figure S2: Progression-free survival (A) and overall survival (B) in patients who either received a chemotherapy-containing or a chemotherapy-free polatuzumab vedotin-based treatment. Survival times were calculated from the initiation of pola treatment.

Abbreviation: pola: polatuzumab vedotin, Pola-R, polatuzumab vedotin-rituximab; Pola(-R)-chemo, polatuzumab vedotin and chemotherapy +/- rituximab

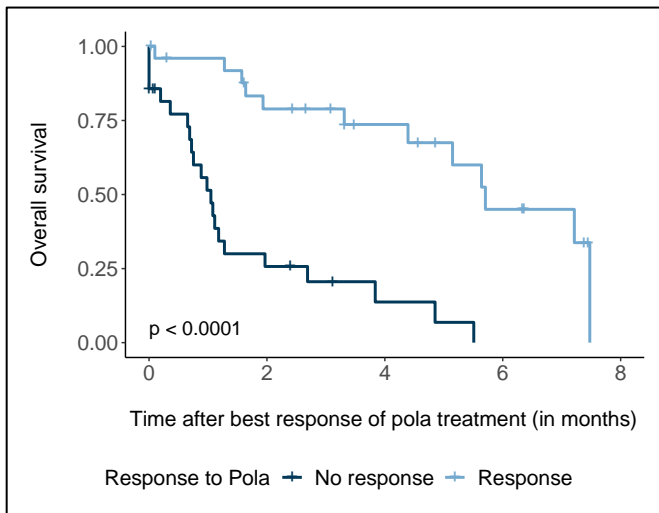


Figure S3: Landmark analysis from time of best response to polatuzumab vedotin (pola) treatment calculated from the date of best response assessment.