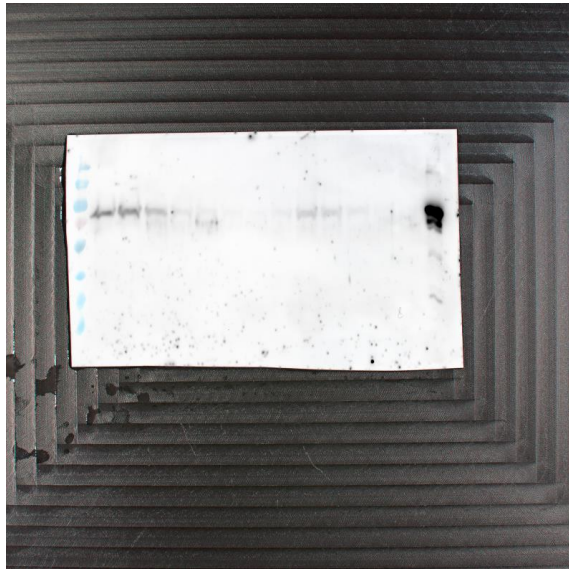


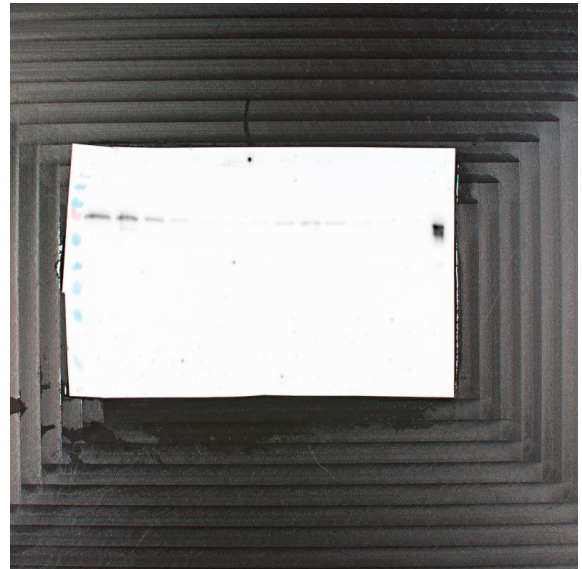
Source Data Figure EV4

Immunoblots of 30S binding assay with **ADP**.

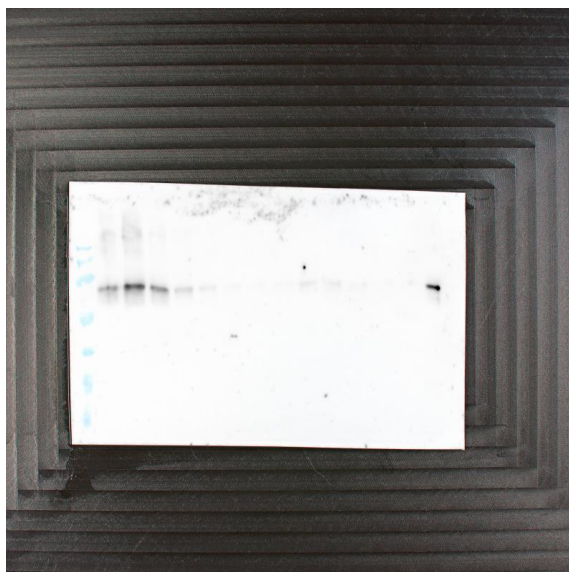
Sucrose-density gradient fractions (lanes 2-14) were run on 12.5% SDS-PAGEs, blotted, blocked, and incubated with anti-His and anti-rabbit antibodies (see Material and Methods). Luminescence was imaged using a Fusion FX (Vilber). In the first lane PageRuler™ Prestained Protein Ladder, 10 to 180 kDa (26616, Thermo Fisher) is loaded. The last lane is an ABCE1-His₆ control.



Wild-Type



Y592A/Y593A



L353Y



R565E



S580E

Immunoblots of 30S binding assay without any nucleotide (**no nt**).



Wild-Type



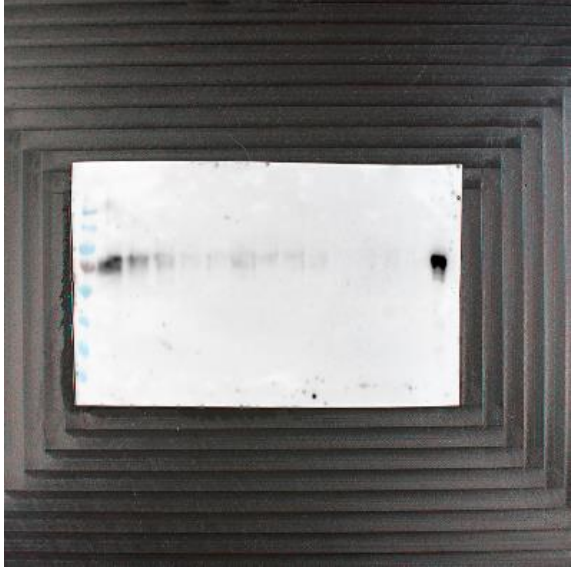
Y592A/Y593A



L353Y



R565E



S580E