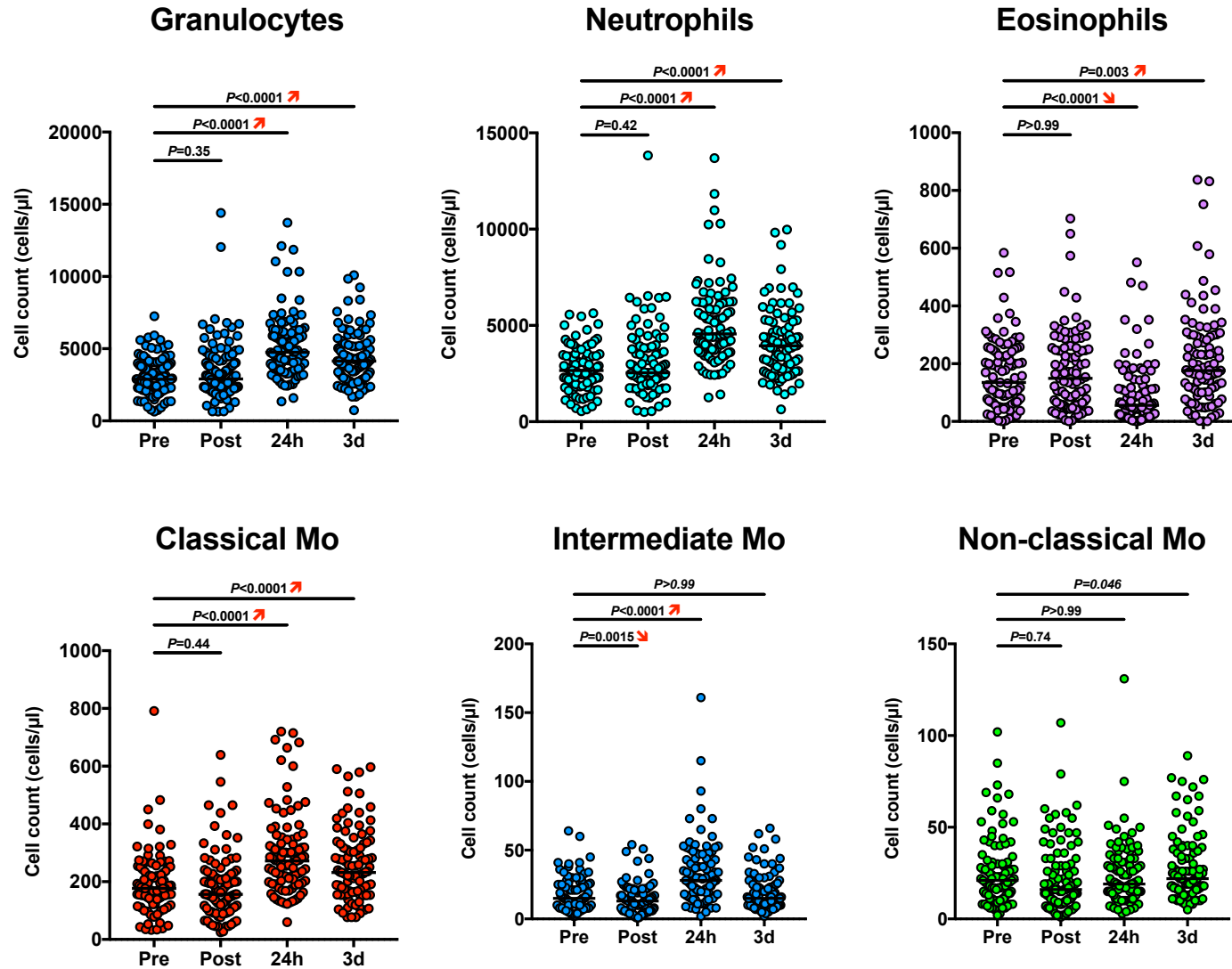
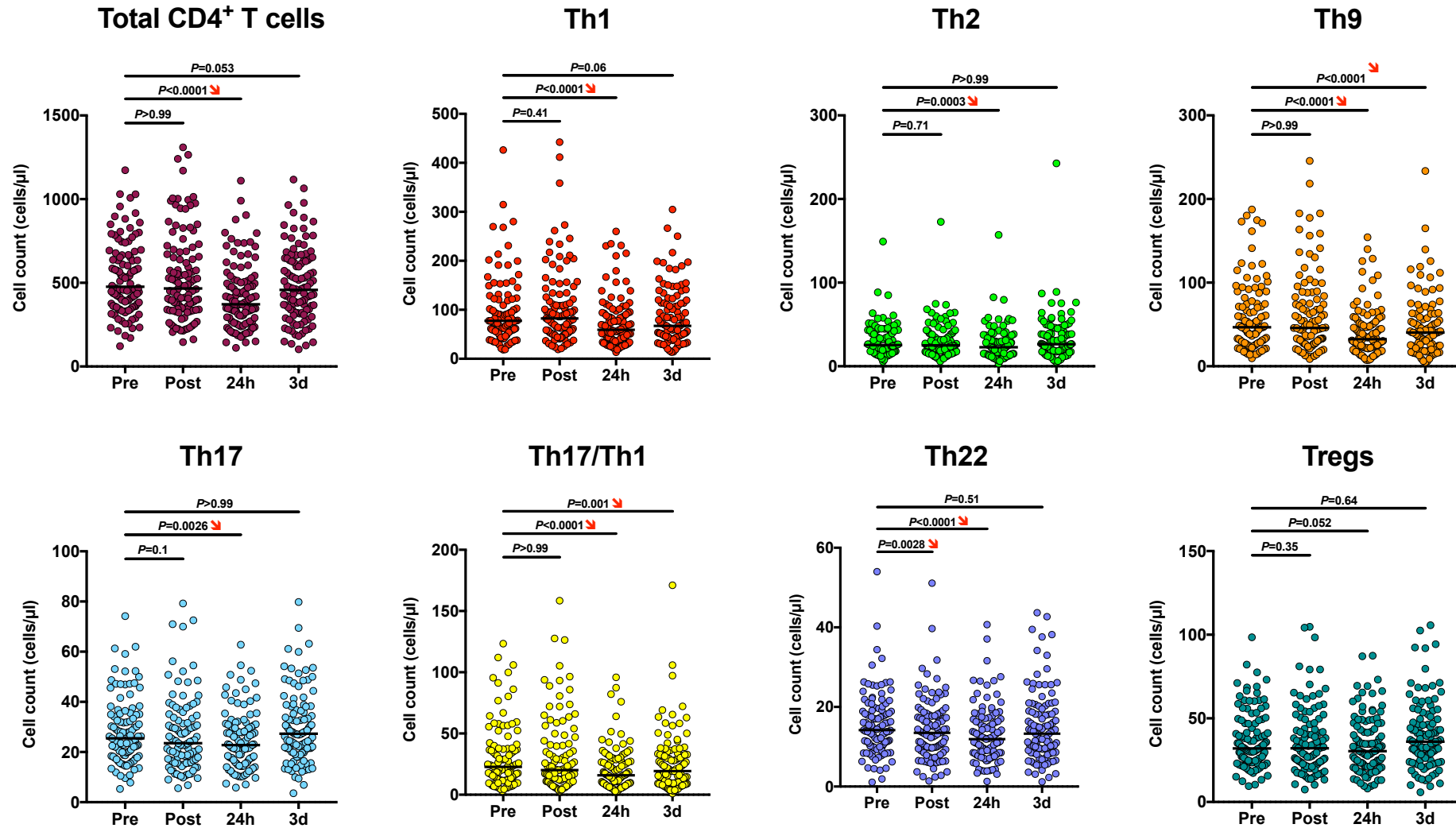


Supplemental Figure 1



Myeloid subset counts after TAVI. Absolute T-cell subset counts (cell/μl) are shown during the prespecified time points after TAVI (Friedman test, with Dunn's multiple-comparisons test).

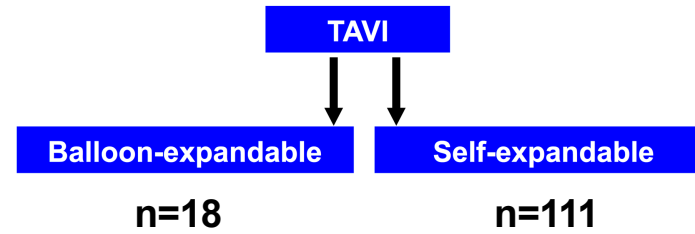
Supplemental Figure 2



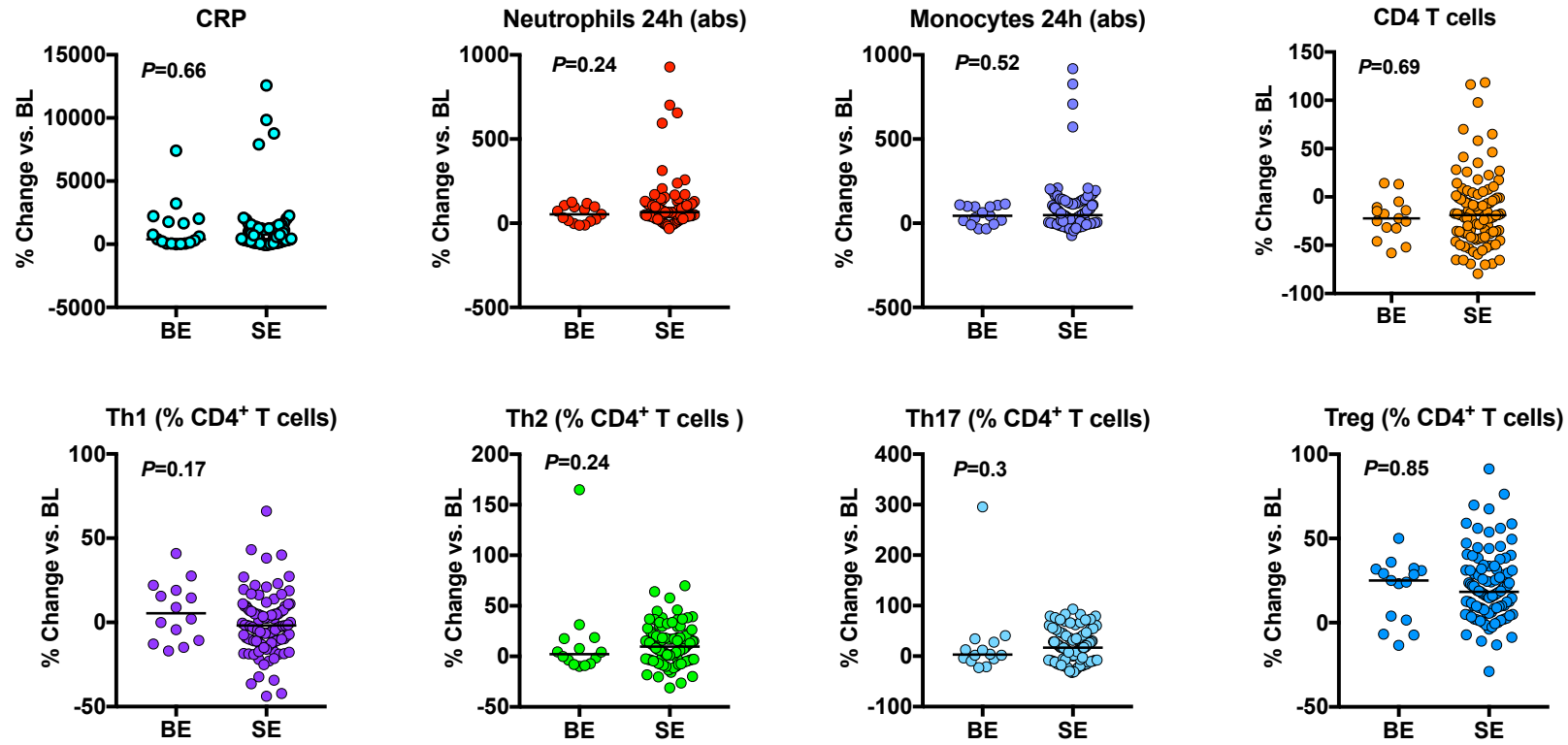
T-cell subset counts after TAVI. Absolute T-cell subset counts (cell/μl) are shown during the prespecified time points after TAVI (Friedman test, with Dunn's multiple-comparisons test).

Supplemental Figure 3

A



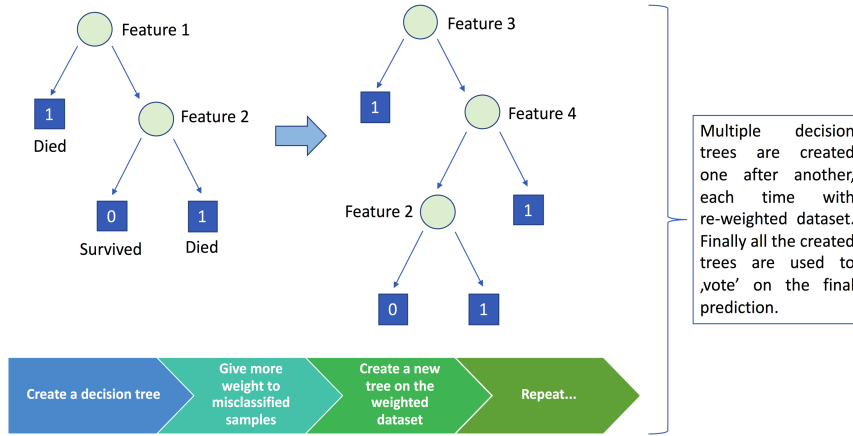
B



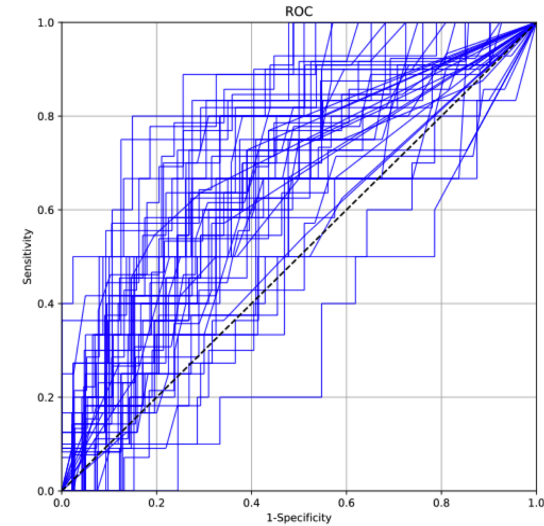
Impact of valve type on leukocyte subsets kinetics after TAVI. (A) Schematic view showing distribution of Balloon-Expandable (BE) versus Self-Expandable (SE) valves in the study with corresponding patient numbers. (B) Changes (24 hours vs. Baseline, BL) in CRP levels and selected myeloid and T-cell subsets for BE and SE valves.

Supplemental Figure 4

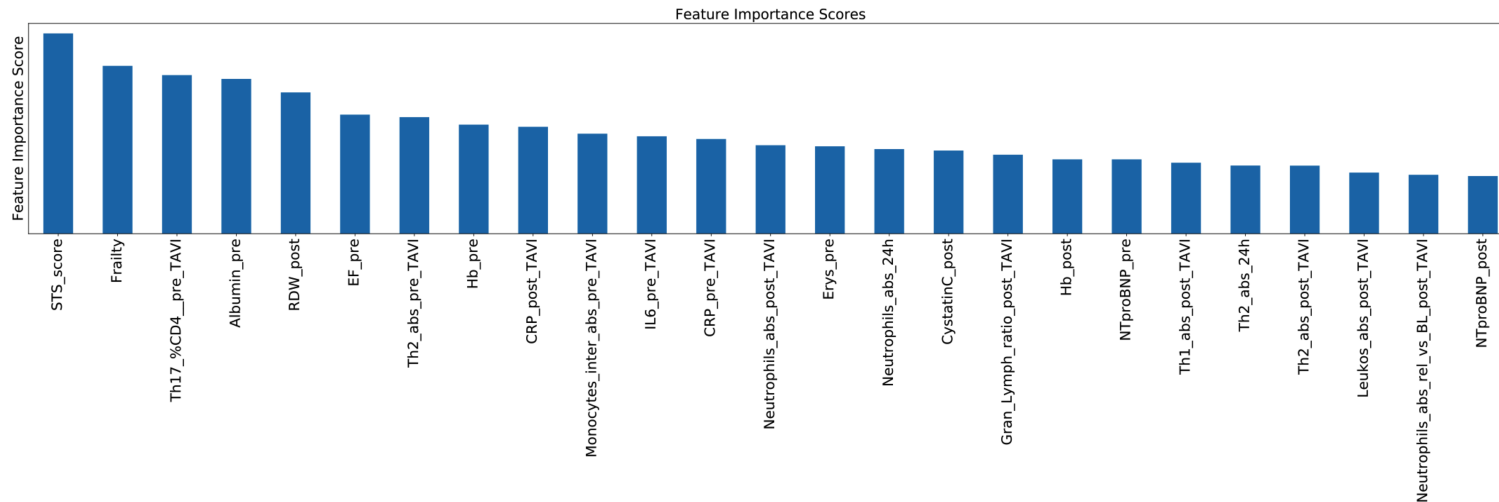
A



B

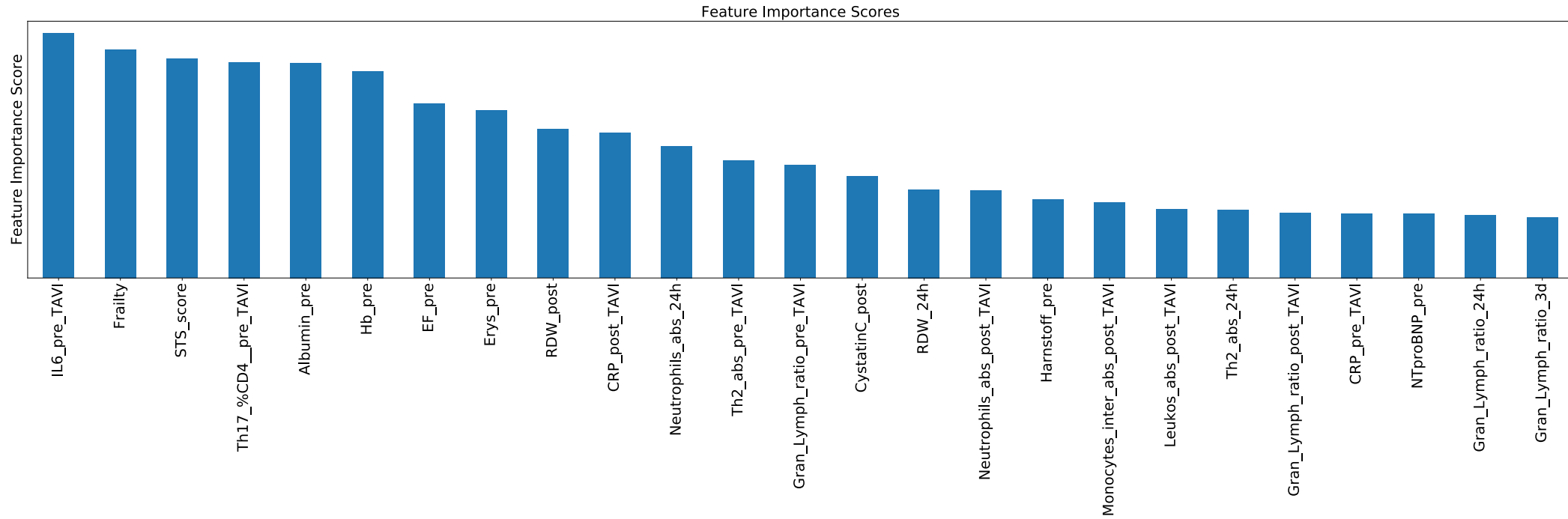


C



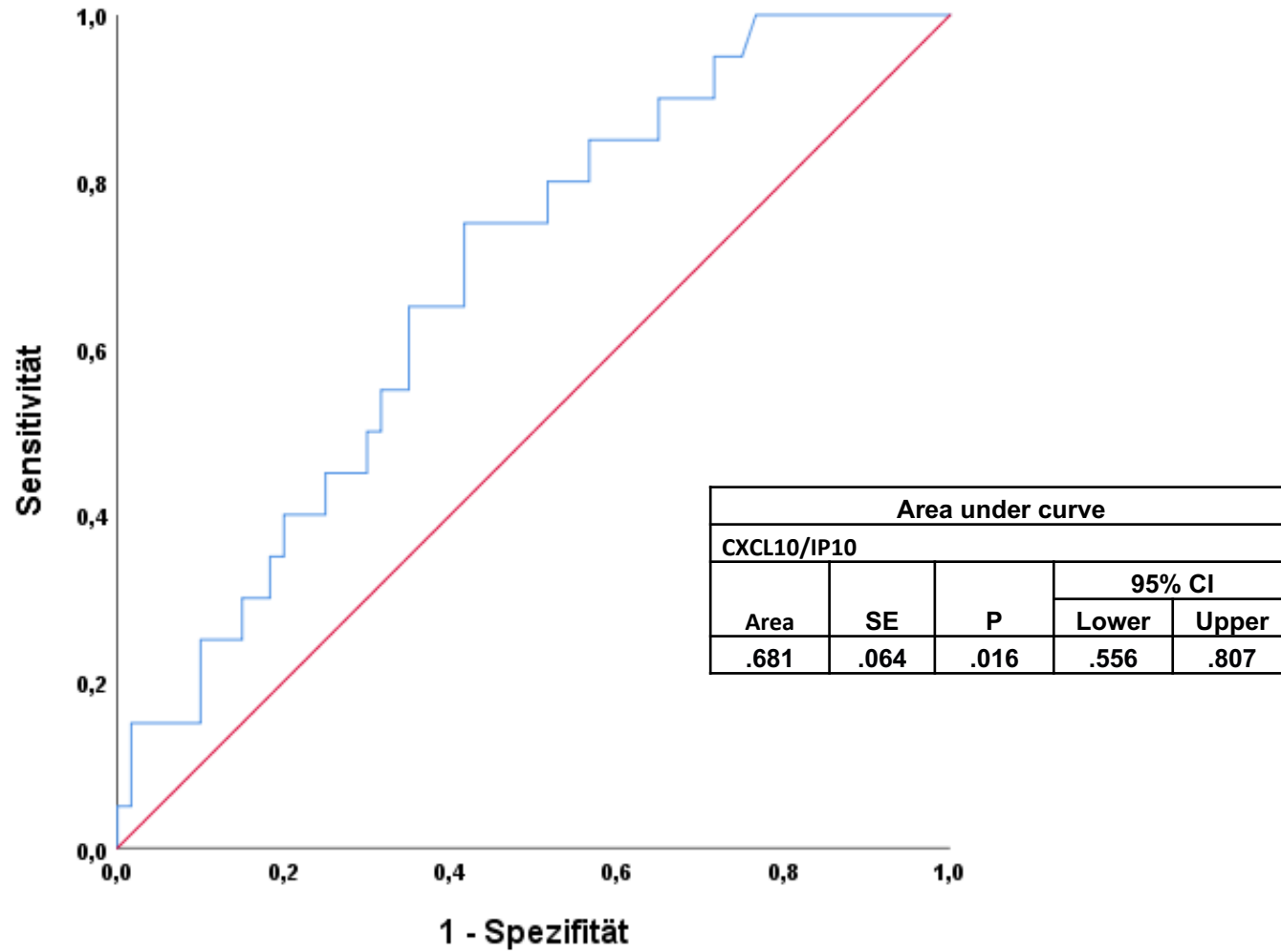
Gradient boosted trees algorithm in the prediction of 12-month mortality after TAVI. (A) Flow chart explaining the working principle of the algorithm. **(B)** Shapes of all the receiver–operating curves for classification of the test set for each random data split. **(C)** Features were sorted according to their impact on the model and presented in the form of a bar plot. For clarity, we present the top 25 features only.

Supplemental Figure 5



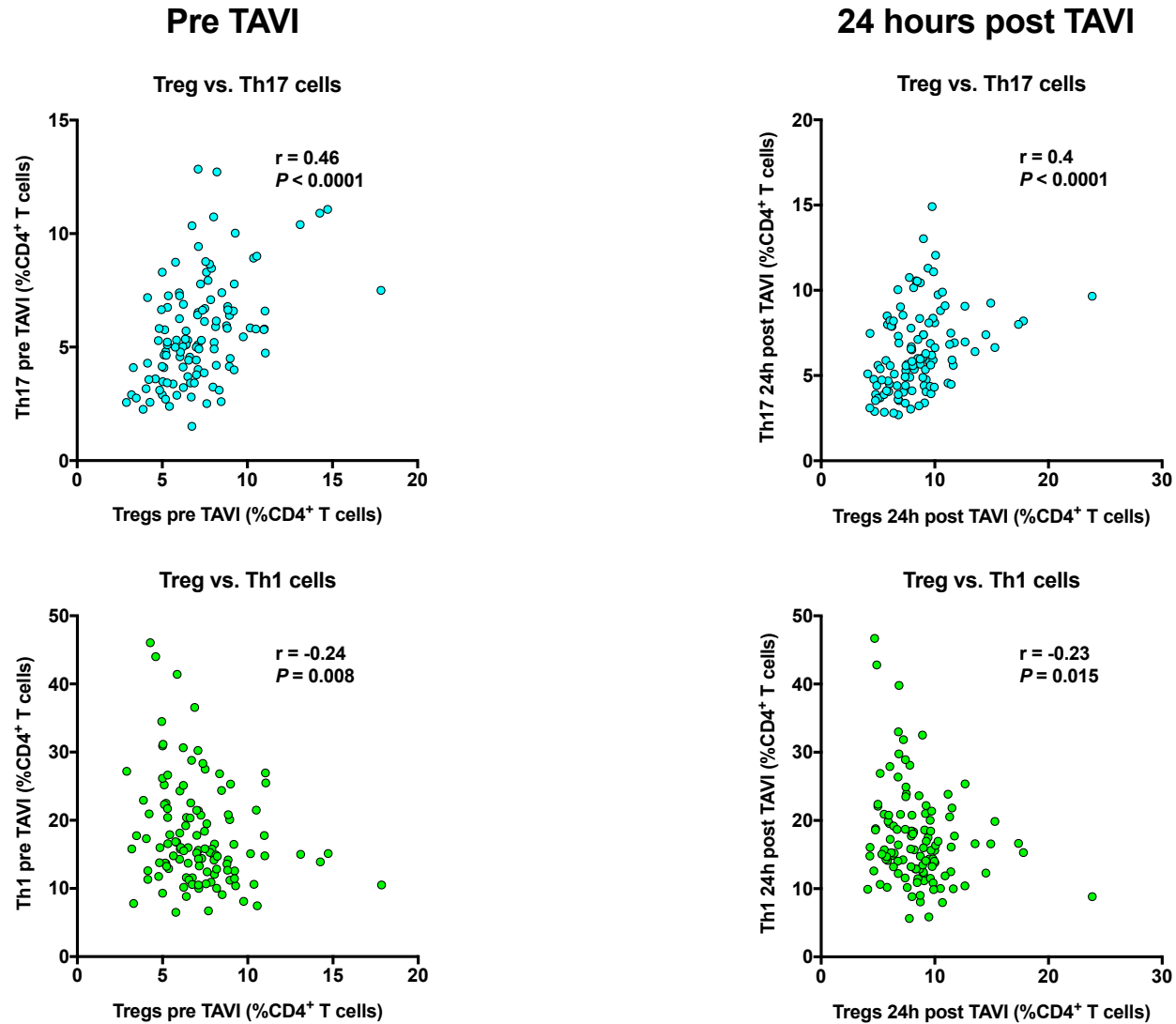
Gradient boosted trees algorithm in the prediction of 12-month mortality after exclusion of 30-day deaths. Features were sorted according to their impact on the model and presented in the form of a bar plot. For clarity, we present the top 25 features only.

Supplemental Figure 6



Receiver operator characteristics (ROC) curve analysis of sensitivity and specificity of CXCL10 in prediction of 12-month mortality in patients post TAVI (based on n=80 patients)

Supplemental Figure 7



Correlations between regulatory T cells (Treg) and other pro-inflammatory T-cell subsets. Treg levels showed significant positive correlations with Th17 (upper panel) and inverse correlations with Th1 cells (lower panel) before and 24 hours after TAVI.