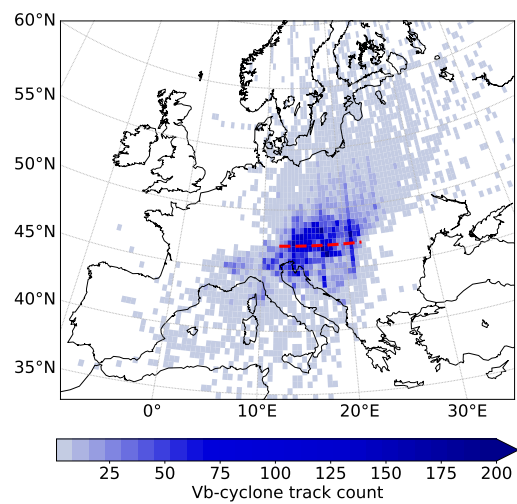
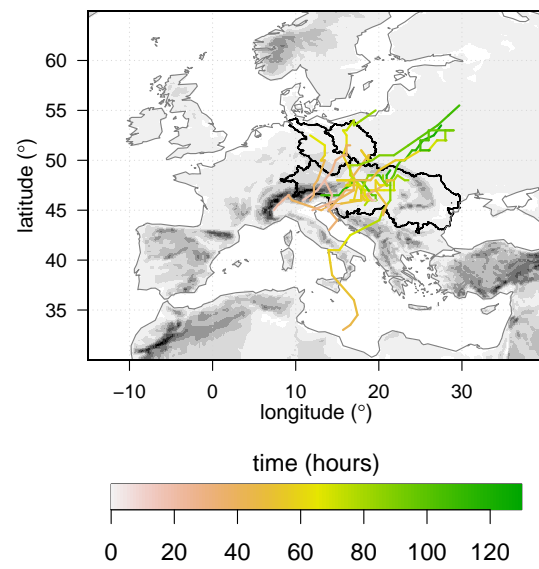


## S1 Supplement

### S1.1 Vb-cyclones in the dynamically downscaled ERA-20C reanalysis

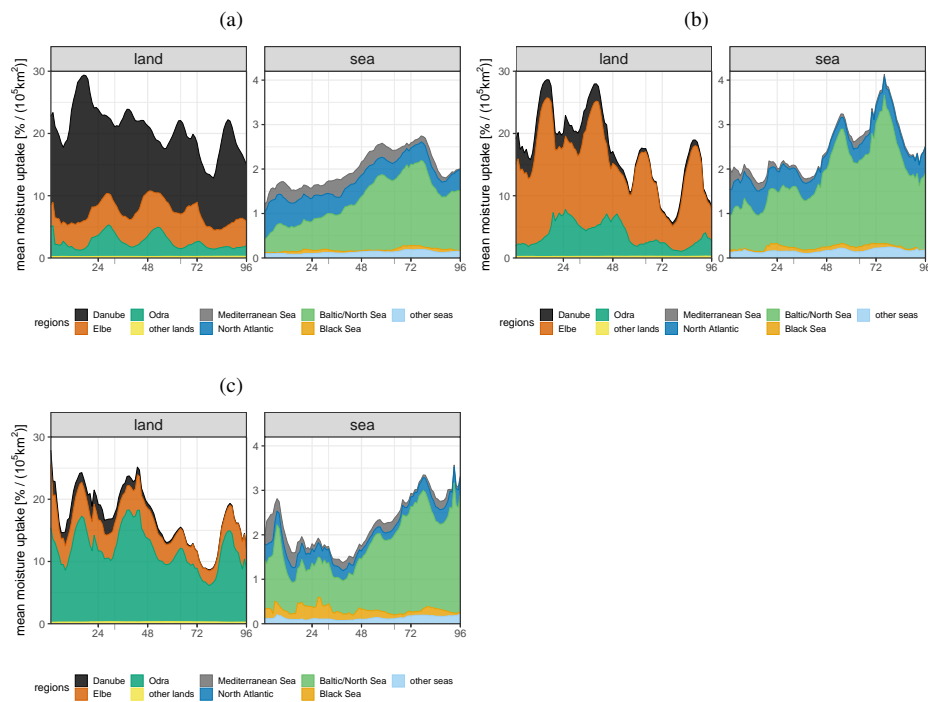


**Fig. S1** Vb-cyclone track count of 1107 Vb-cyclones detected in the dynamically downscaled ERA-20C reanalysis data interpolated to a horizontal resolution of  $0.5^\circ$ . The red crossing line shows the selection criterion following [Hofstätter and Blöschl \(2019\)](#).



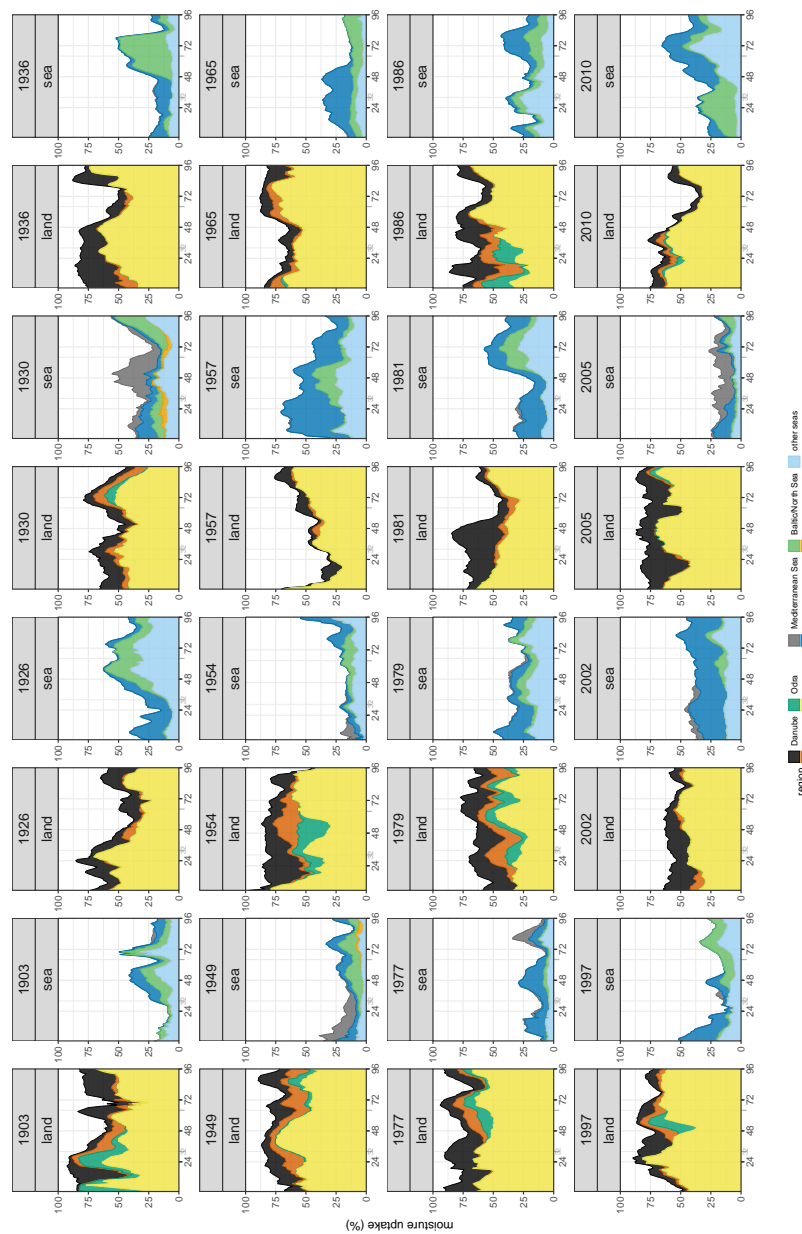
**Fig. S2** Vb-cyclone tracks of selected events in Table 1 based on dynamically downscaled ERA-20C reanalysis data interpolated to a horizontal resolution of  $0.5^\circ$ .

## S1.2 Average temporal evolution of the moisture uptake



**Fig. S3** Area-weighted mean moisture uptakes in various uptake regions for precipitation in the (a) Danube, (b) Elbe, and (c) Odra catchment averaged over all 16 events listed in Table 1. The x-axis corresponds to the four days of heavy precipitation selected for the moisture diagnostics. Note the different y-axis scales.

## S1.3 Temporal evolution of the individual events



**Fig. S4** Moisture contributions of various uptake regions to precipitation in the Danube catchment 1. The x-axis corresponds to the four days of heavy precipitation selected for the moisture diagnostics.

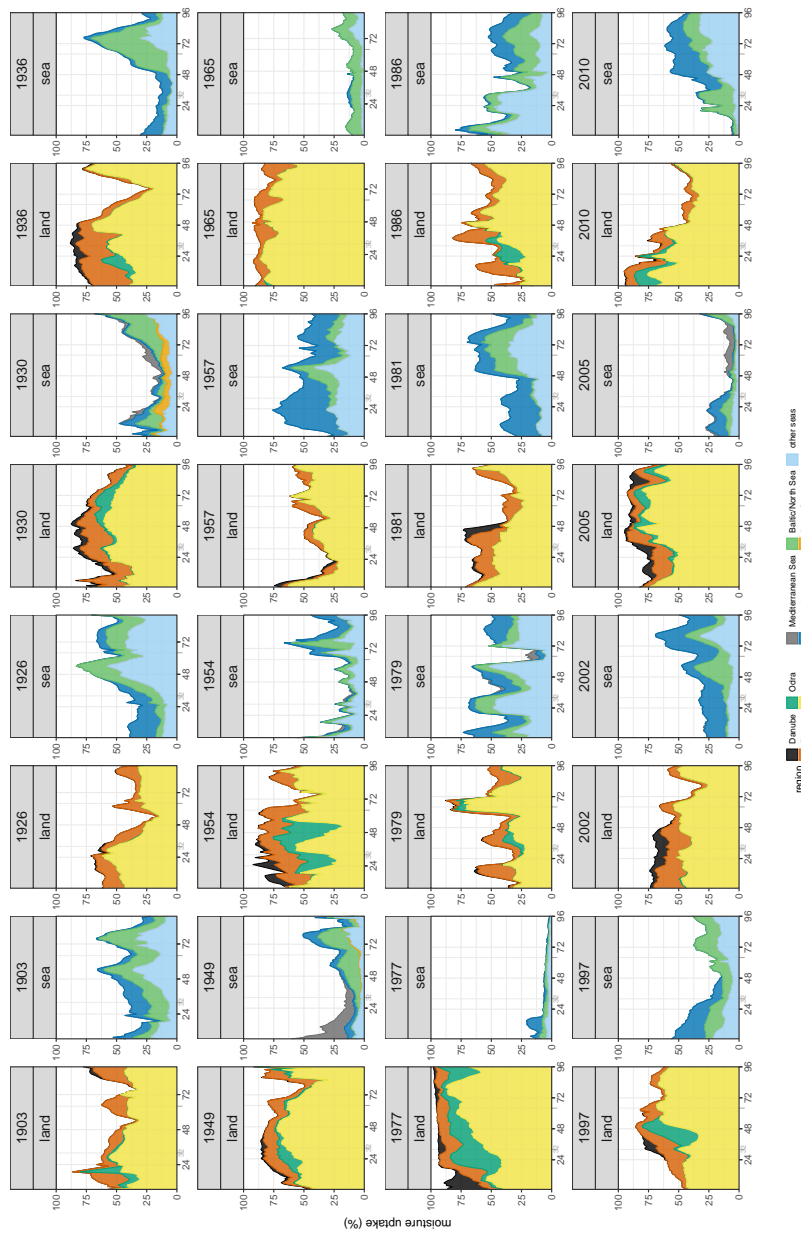
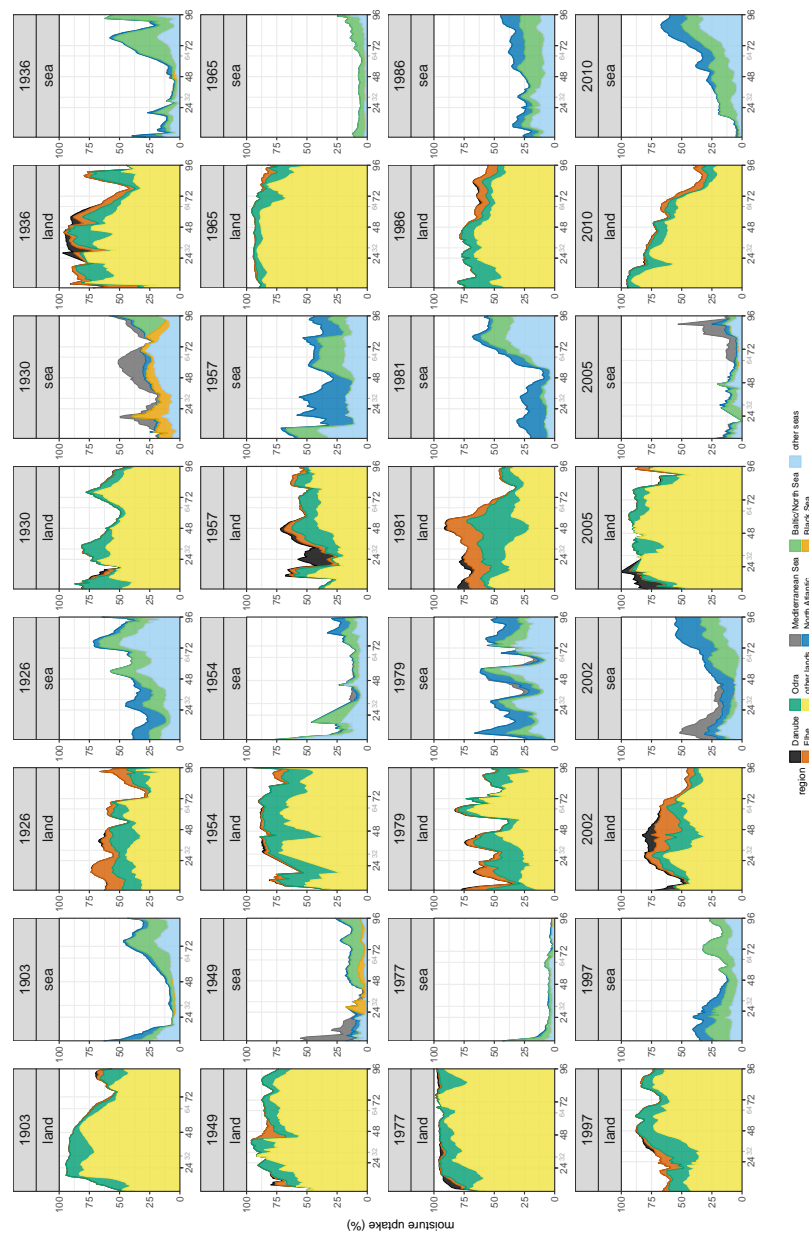


Fig. S5 The same as Figure S4 but for the Elbe catchment region.



**Fig. S6** The same as Figure S4 but for the Odra catchment region.