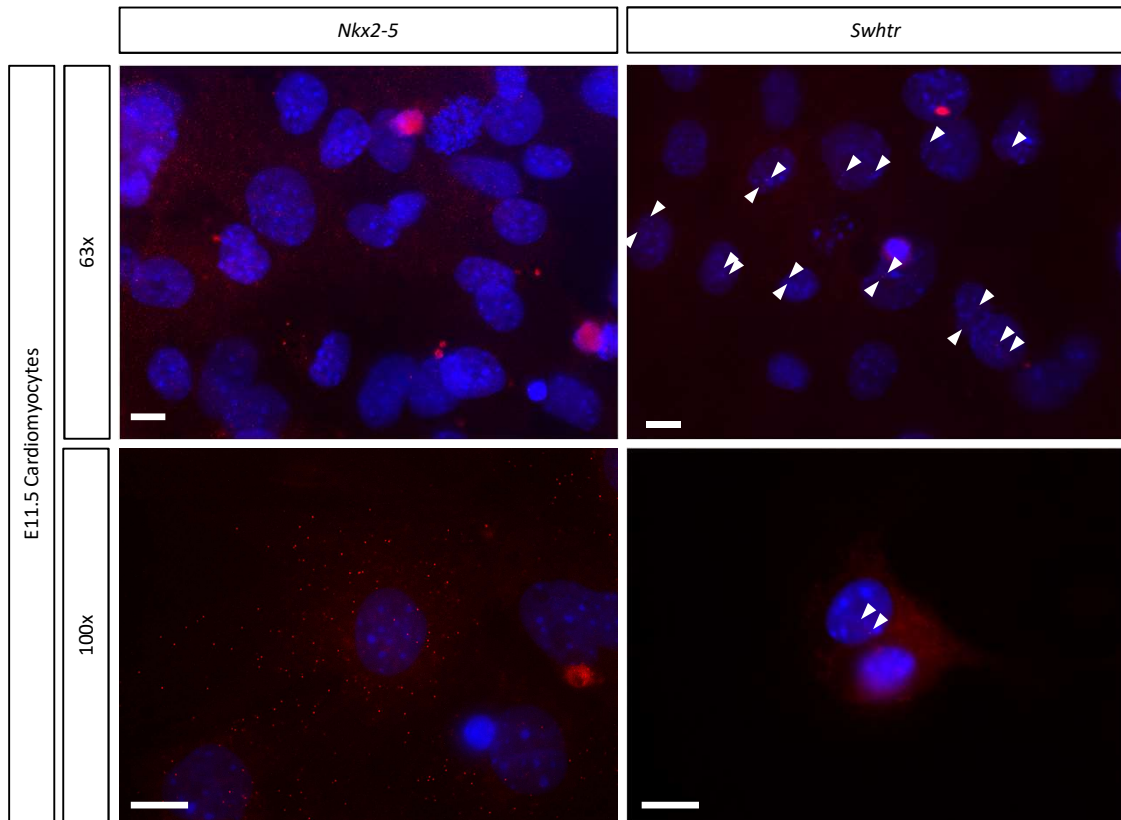
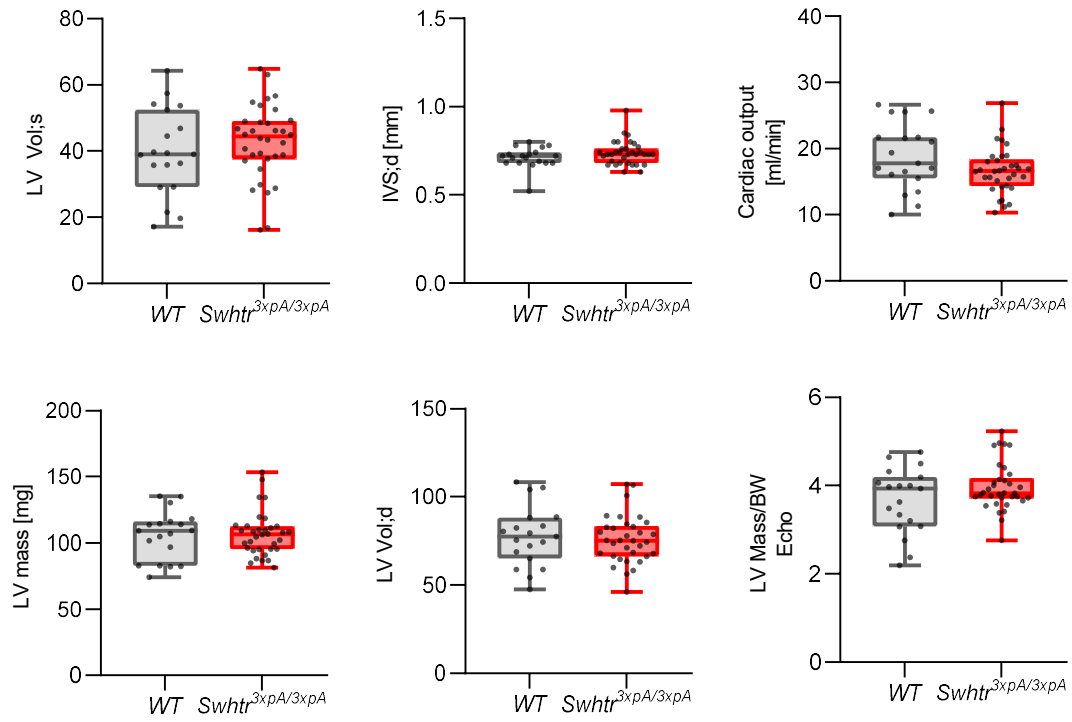


Rogala, Supplementary Figure 1



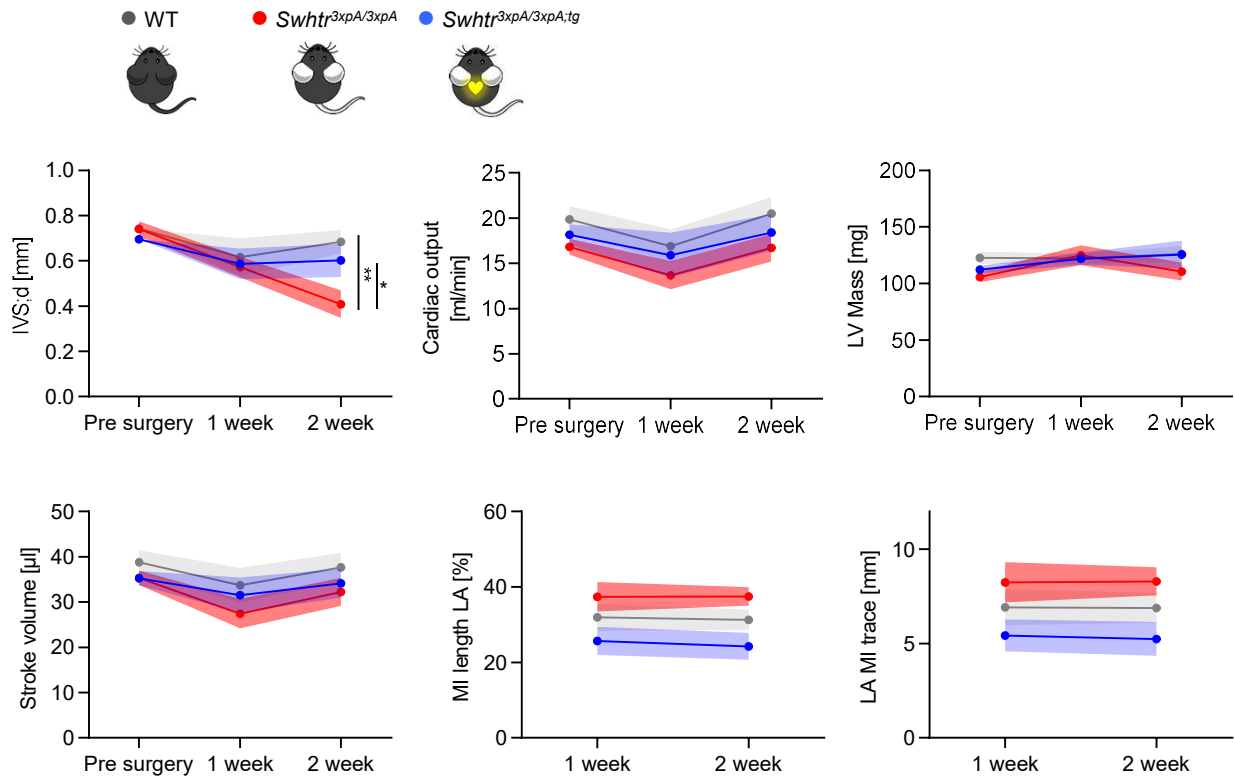
Supplementary Figure 1, smFISH of *Nkx2-5* and *Swltr* on E11.5 primary cardiomyocytes
Two different magnifications are shown. Arrowheads indicate signals and the white line represents 10 μ m.

Rogala, Supplementary Figure 2



Supplementary Figure 2, No difference in heart parameters in *Swht*^{3xpA/3xpA} mutant mice
Statistical significance was tested by Two-way ANOVA. No statistically significant differences were detected.

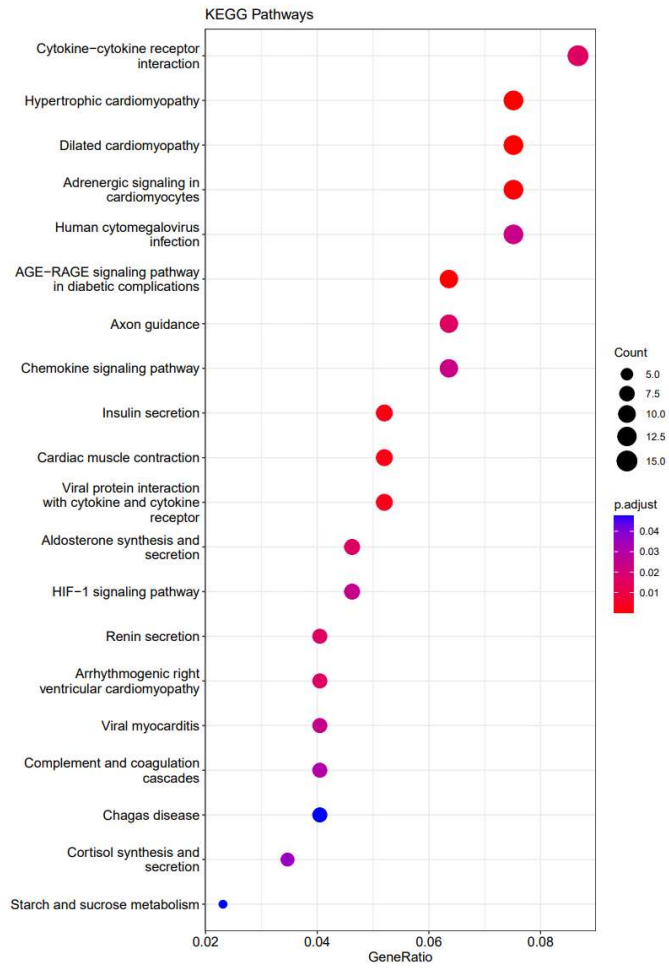
Rogala, Supplementary Figure 3



Supplementary Figure 3, Additional heart parameters after MI

Statistical significance tested by Two-way ANOVA. No indication implies that no statistically significant difference from the wild type was detected. * < 0.05, ** < 0.01 (n=9 animals per genotype)

Rogala, Supplementary Figure 4



Supplementary Figure 4, KEGG-pathway-analysis of *Swltr* dependent genes