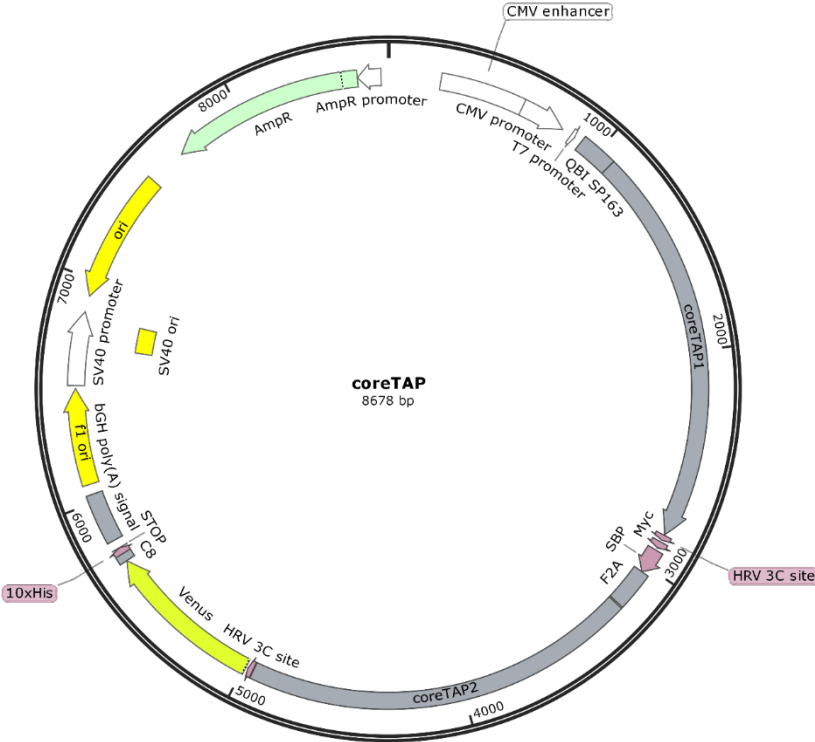
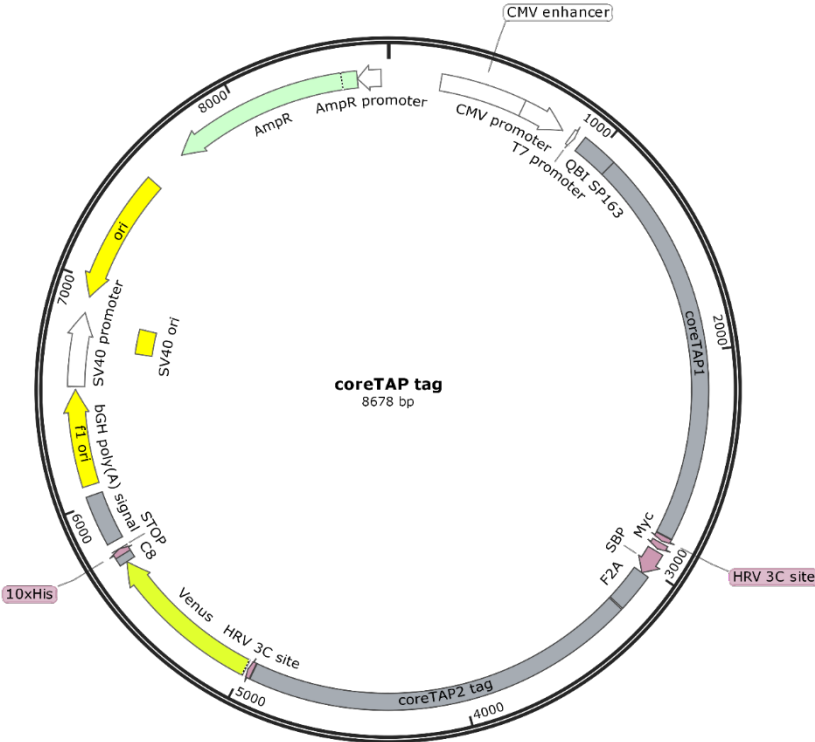


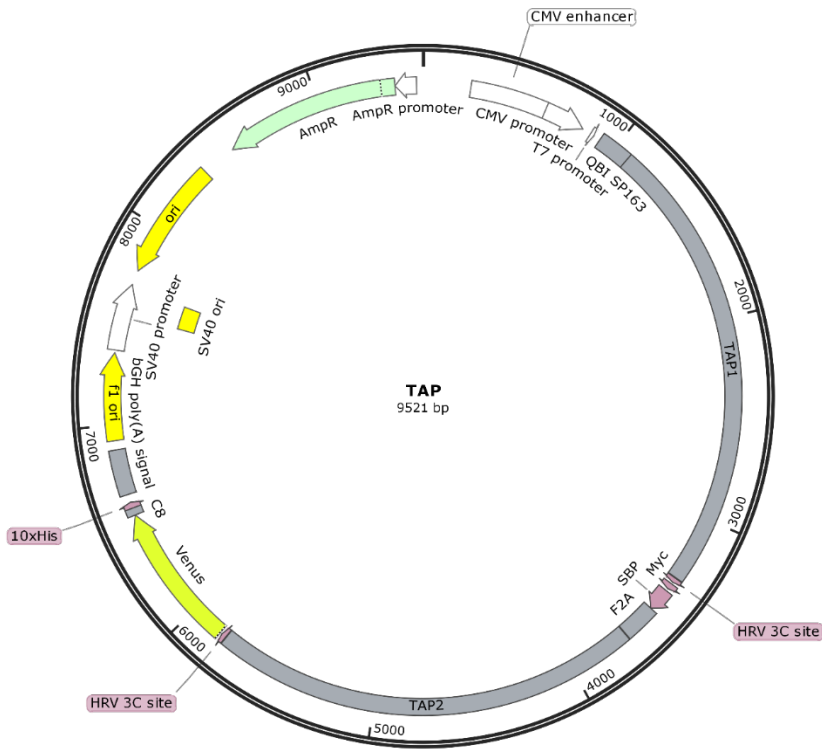
Plasmid maps



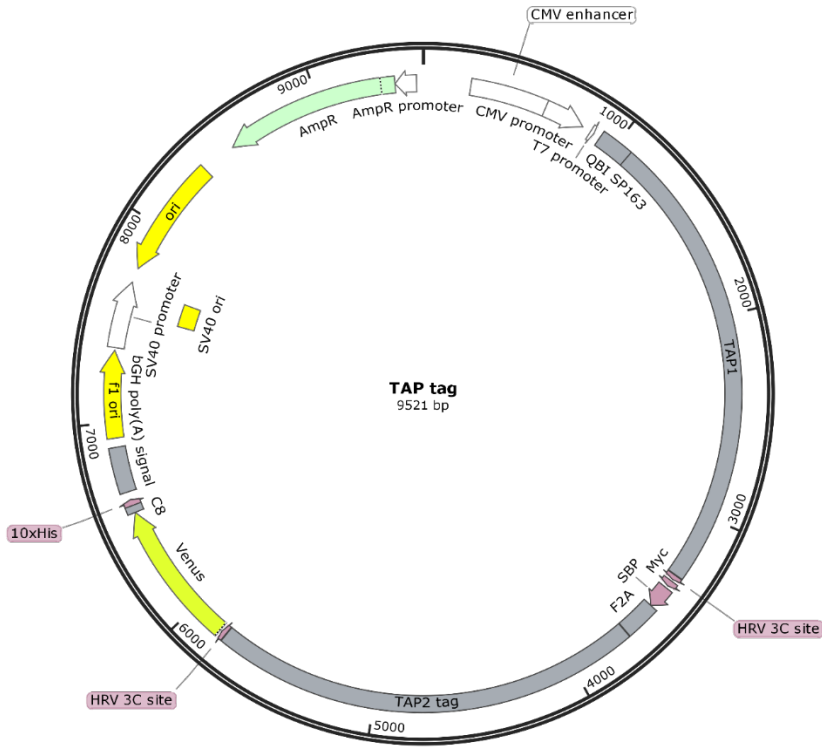
Plasmid encoding for coreTAP



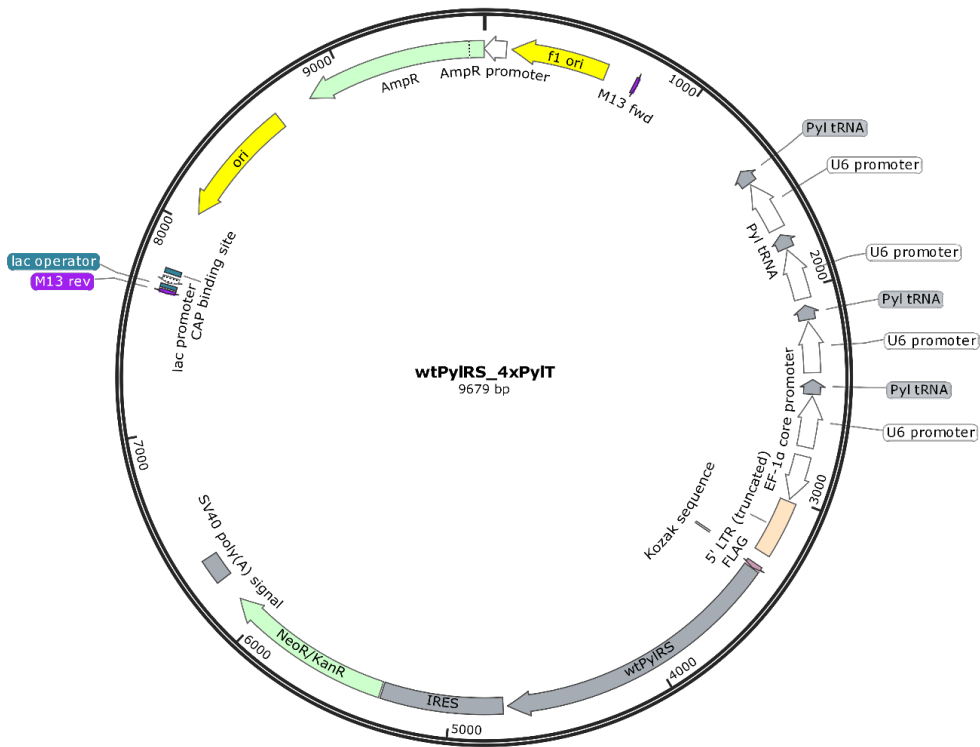
Plasmid encoding for coreTAP^{TAG}



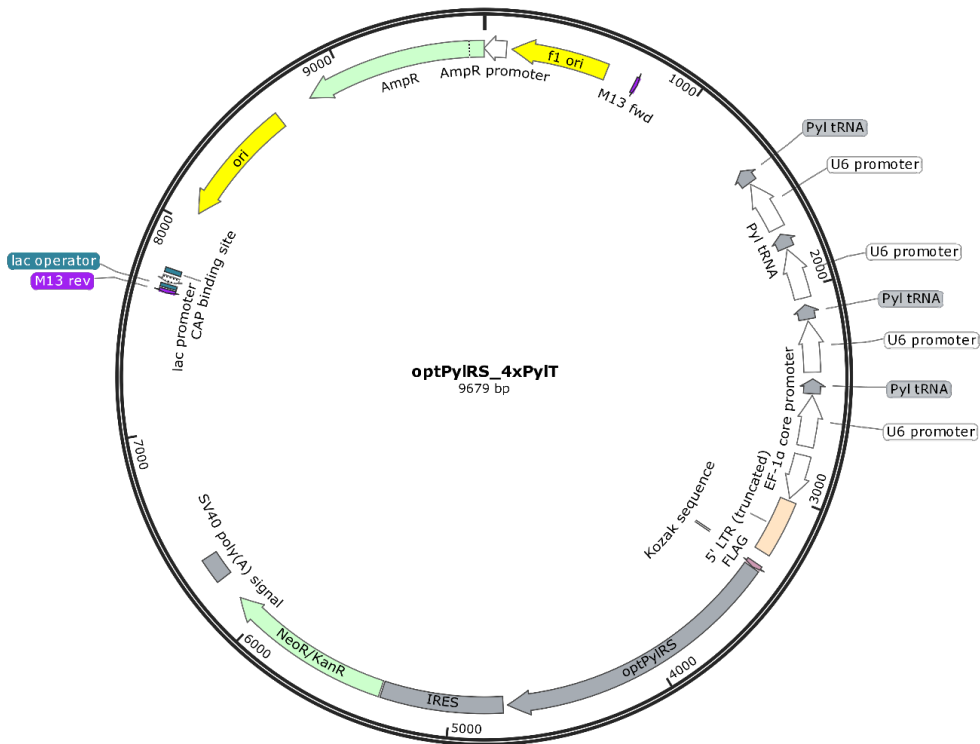
Plasmid encoding for TAP



Plasmid encoding for TAP^{TAG}

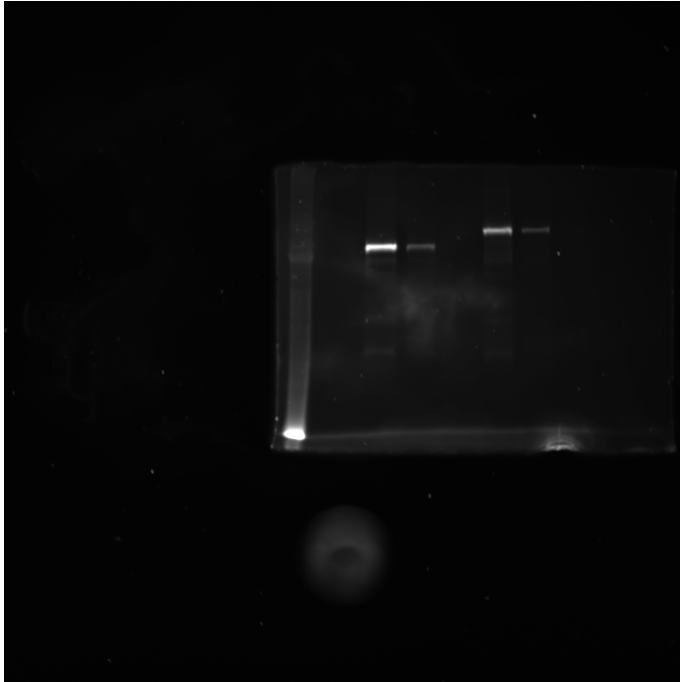


Plasmid encoding for wtPyIRS

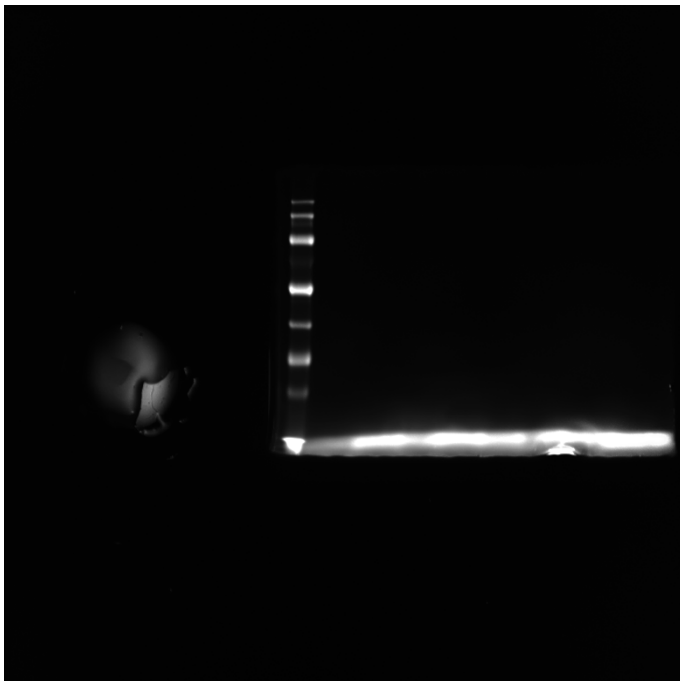


Plasmid encoding for optPyIRS

Figure 2 c



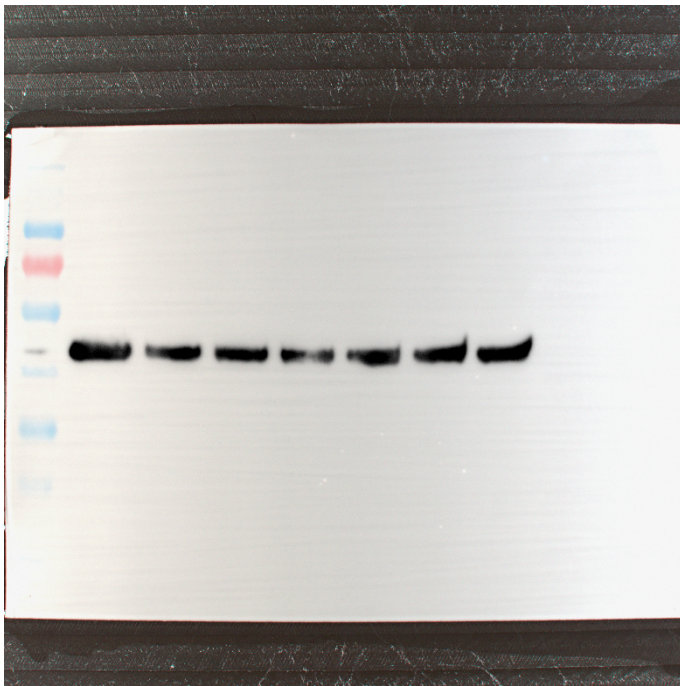
mVenus in-gel fluorescence (ex/em 480/535)



mVenus in-gel fluorescence marker image

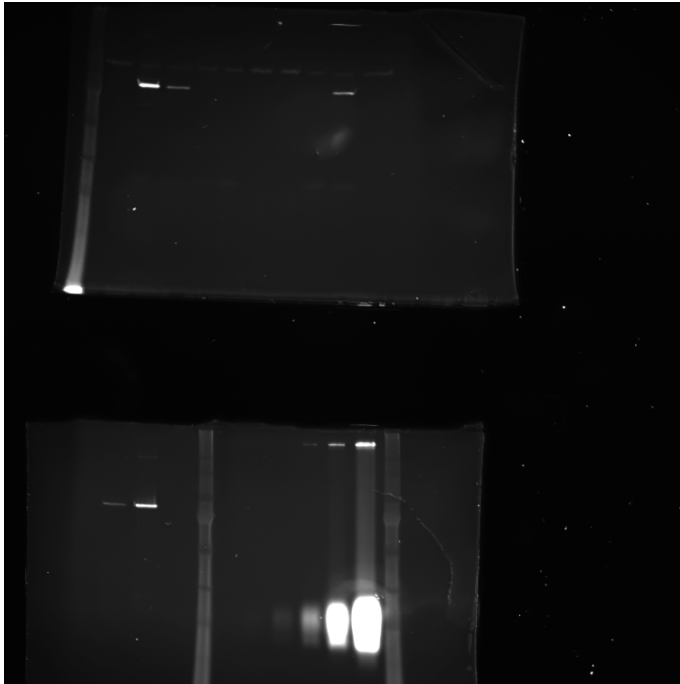


anti-TAP1 (148.3)



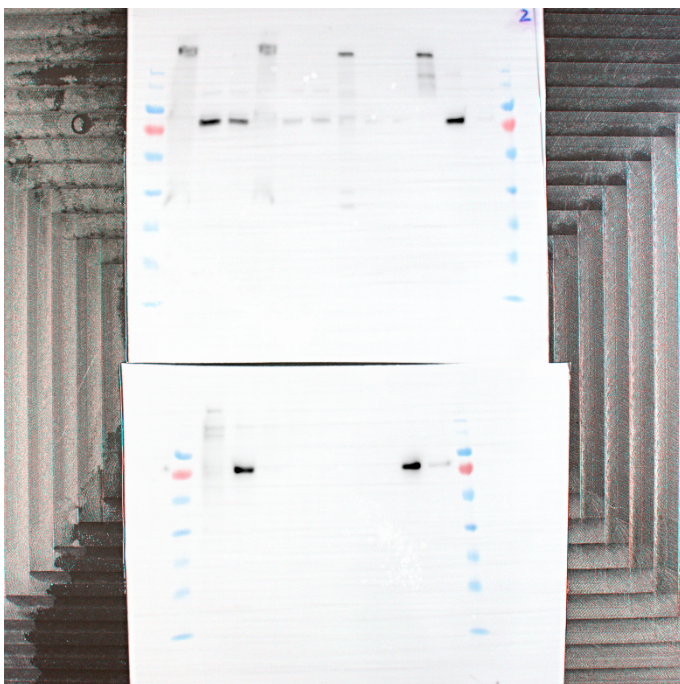
anti- β -actin (AC-74, Sigma-Aldrich)

Figure 3 a

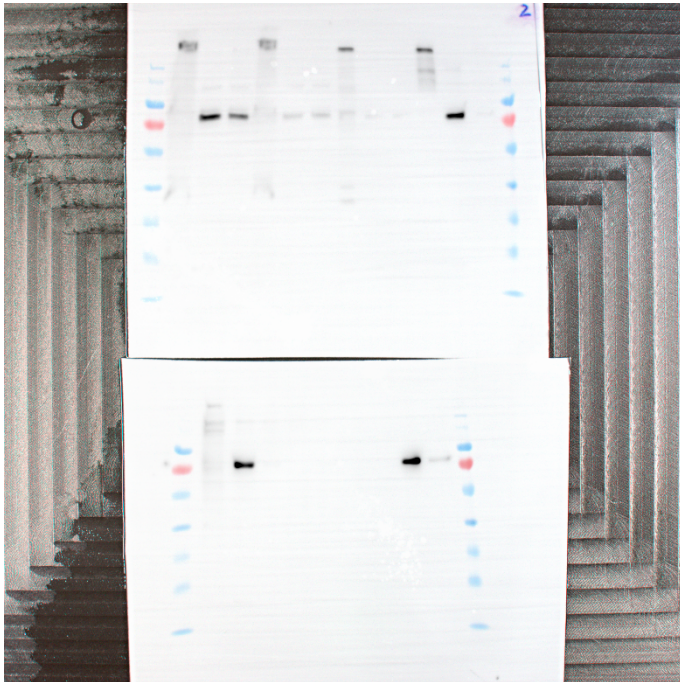


mVenus in-gel fluorescence (ex/em 480/535)
(upper gel)

Figure 3 b

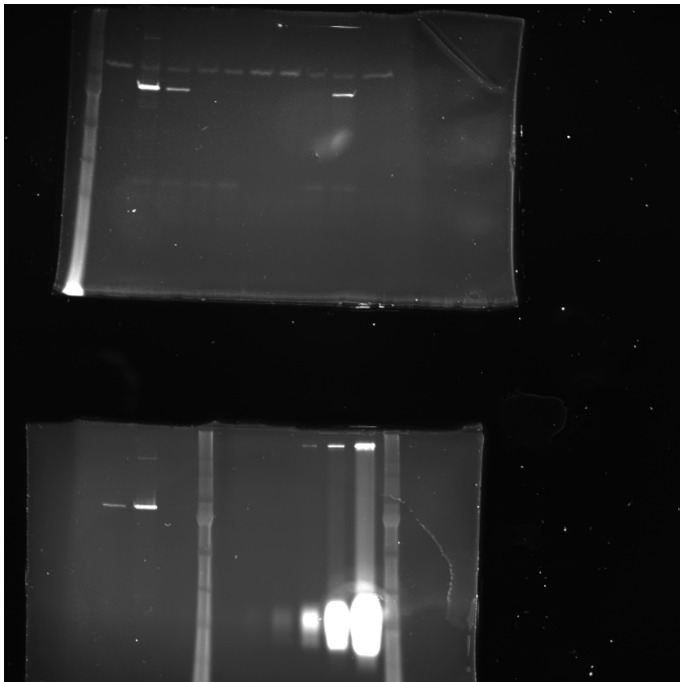


input, anti-TAP1 (148.3)
(upper blot, lane 1-4 from the left)



purified protein, anti-TAP1 (148.3)

(lower blot, lane 1-4 from the right)



purified protein, mVenus in-gel fluorescence (ex/em 480/535)

(lower gel, lane 1-4 from the left)