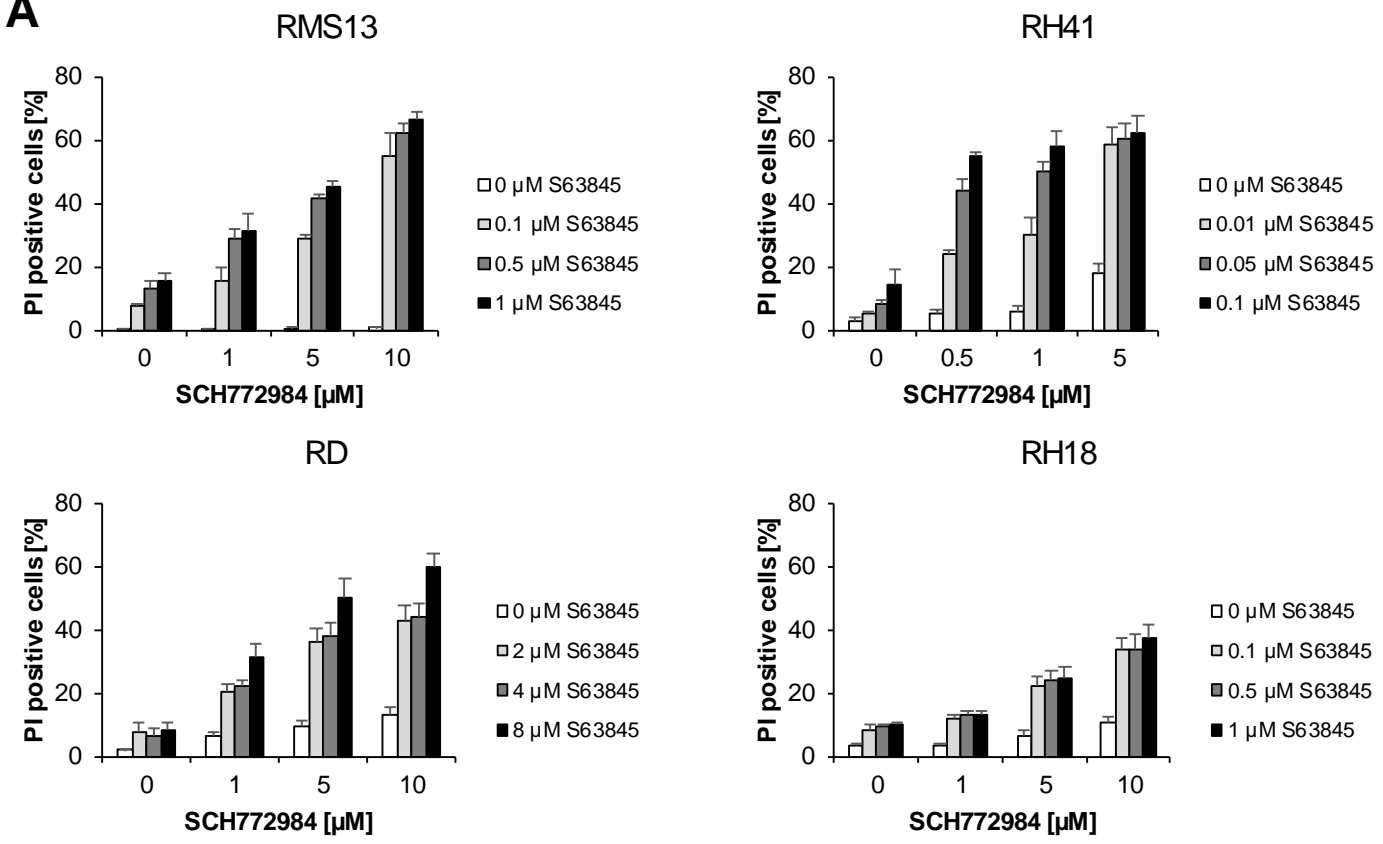


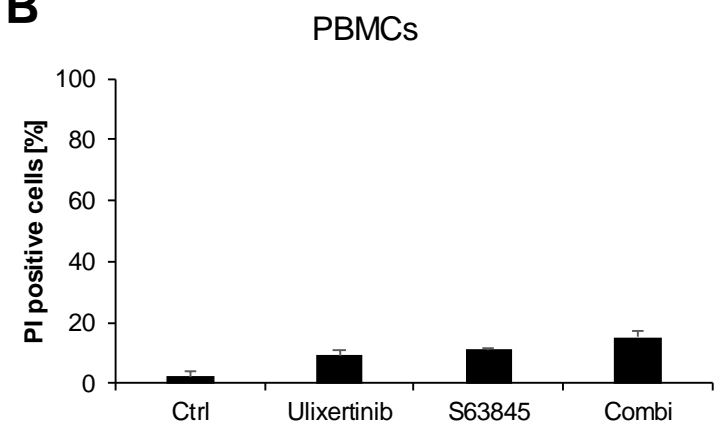
Supplementary figures and tables

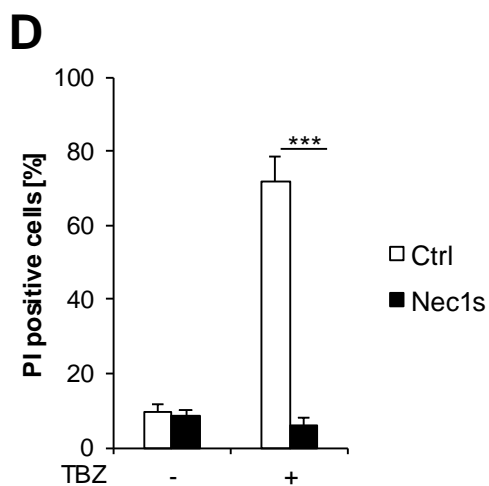
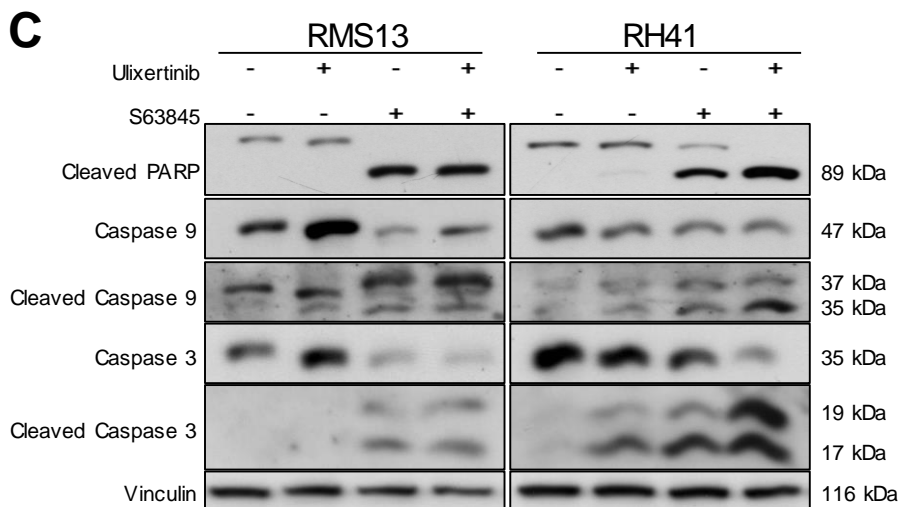
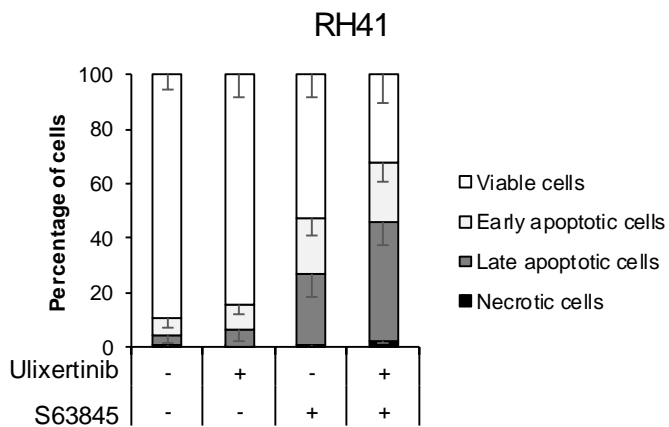
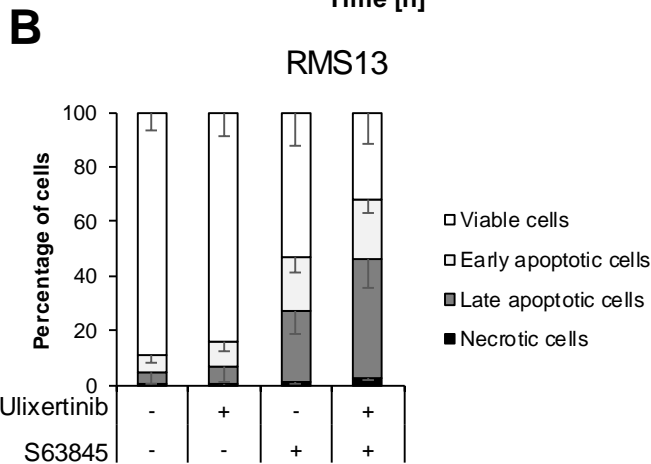
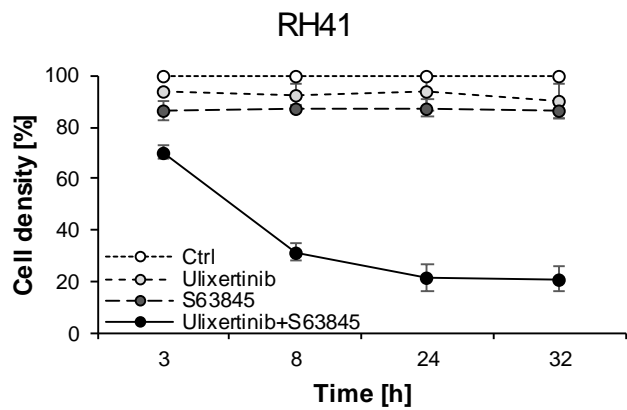
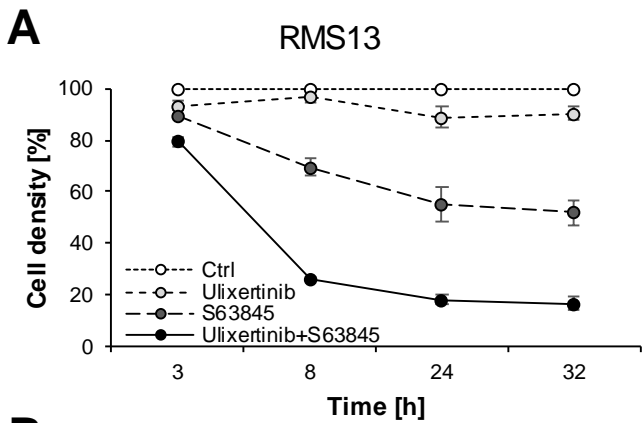
Suppl. Fig. 1.

A



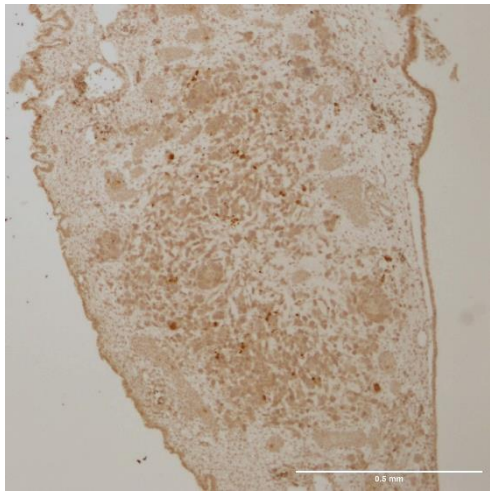
B



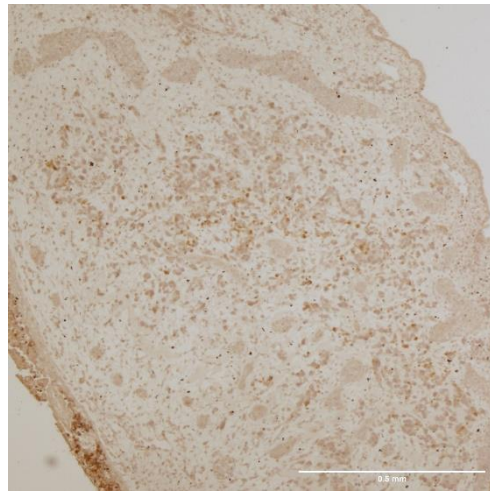


E

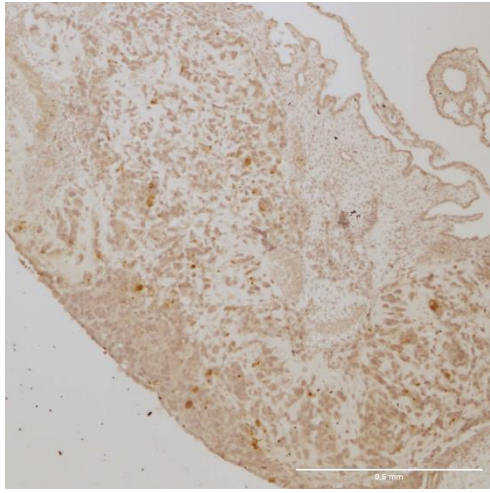
Ctrl



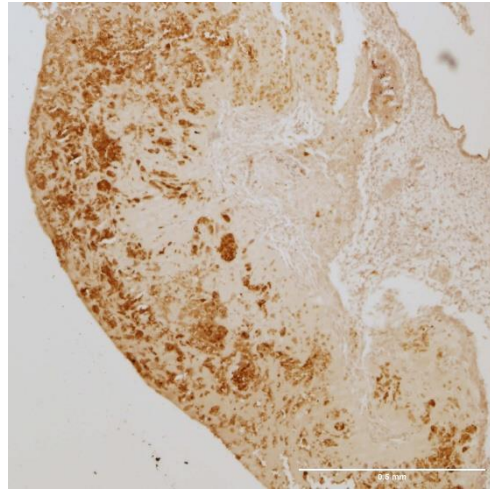
S63845



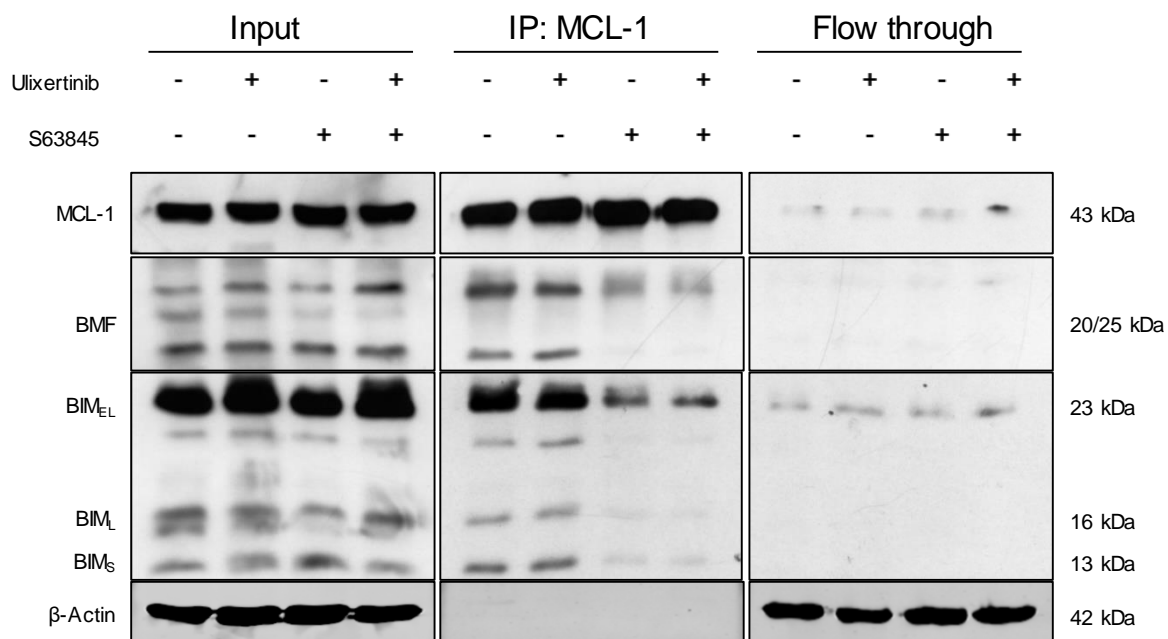
Ulixertinib



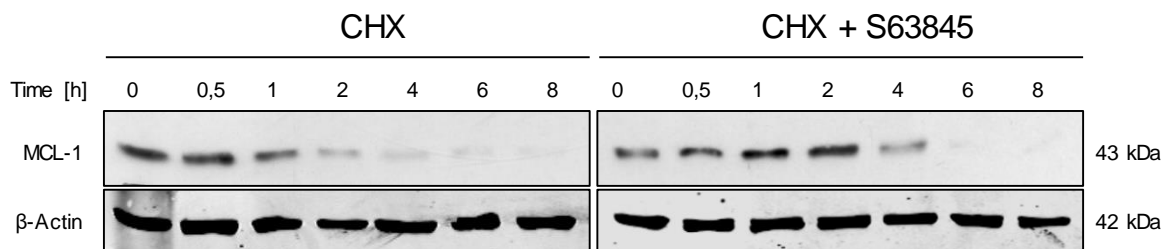
Ulixertinib + S63845



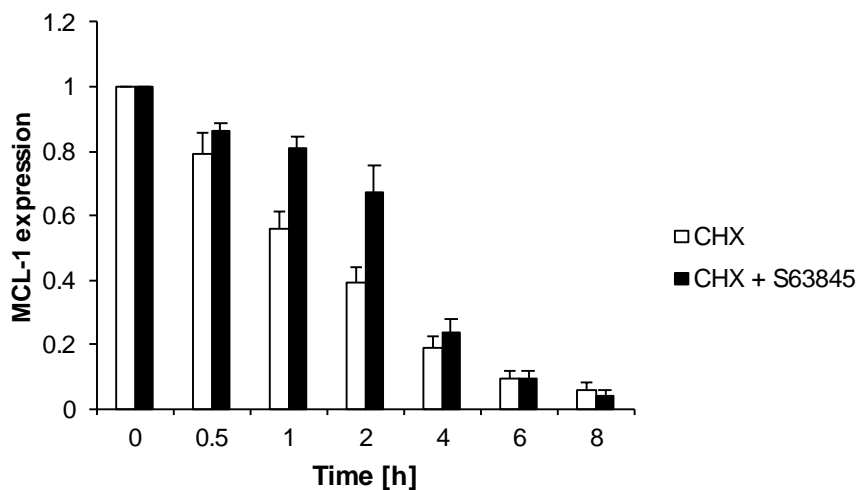
A



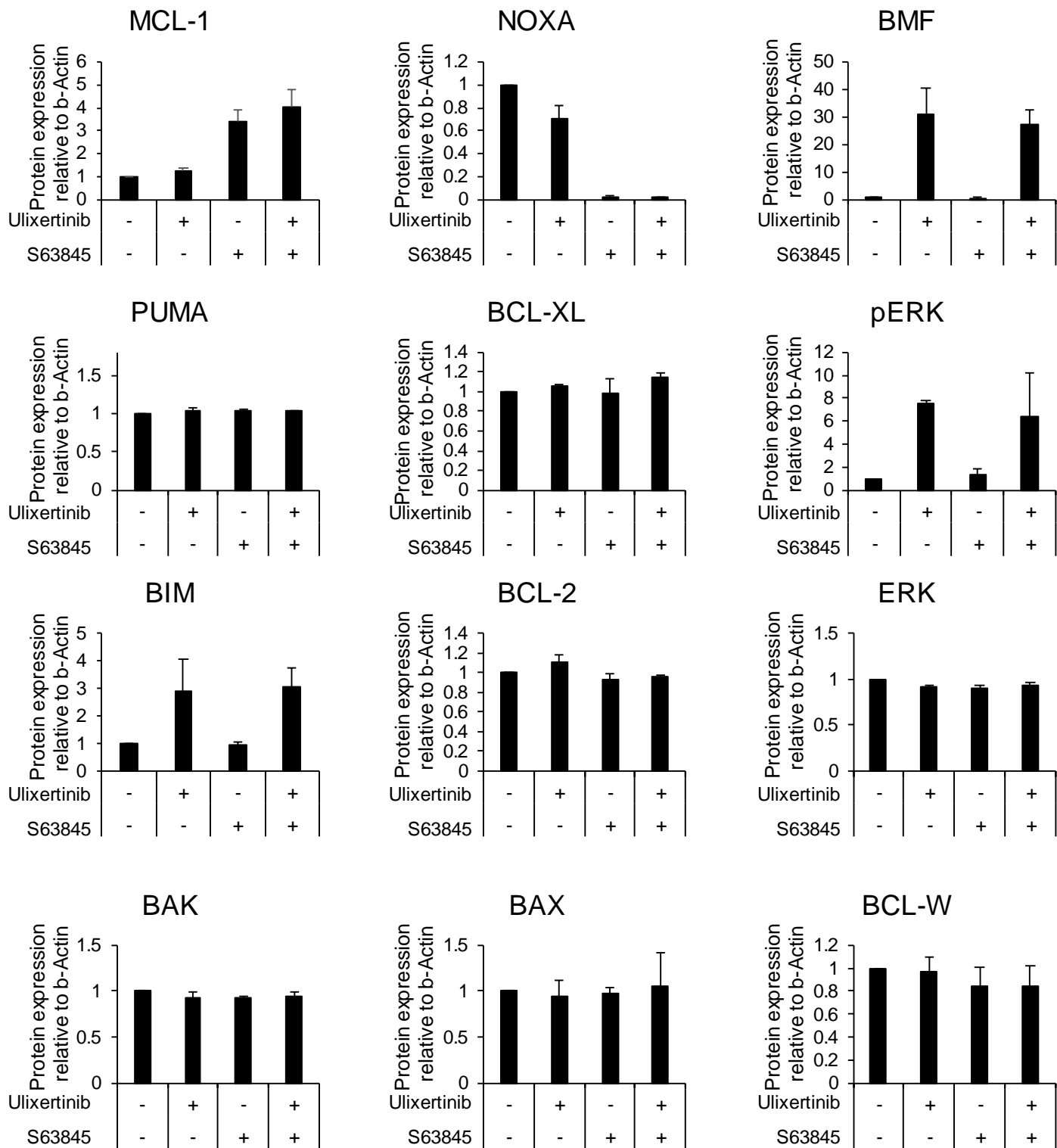
B



C

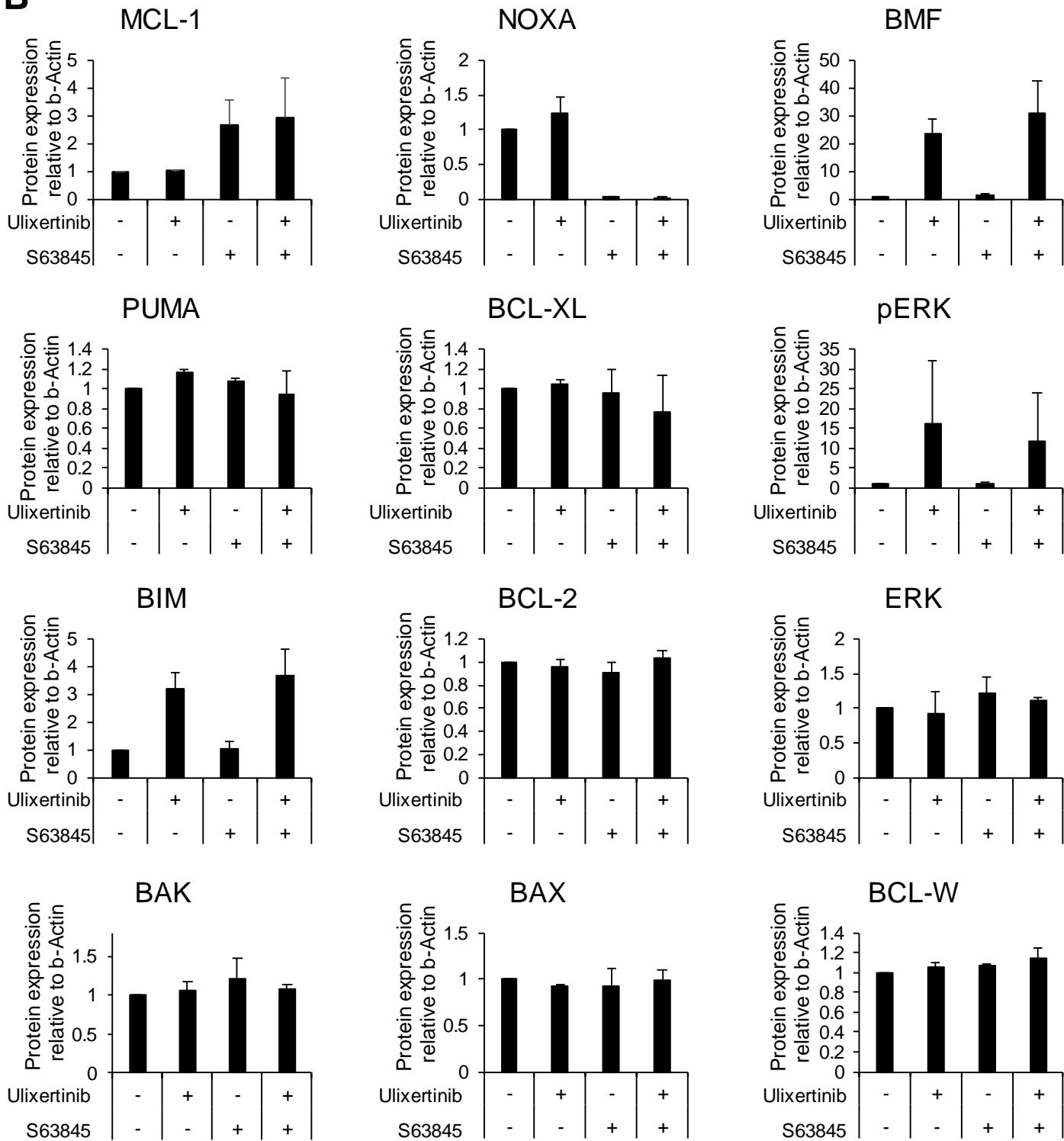


A



Suppl. Fig. 5.

B



Suppl. Table. 1. Synergistic cell death induction upon Ulixertinib/S63845. Combinational index (CI) was calculated using CalcuSyn software as described in Materials and Methods for data shown in Fig. 1A, where CI <0.9 indicates synergism, CI = 0.9-1.1 - additivity, and CI > 1.1 - antagonism.

RMS13	S63845 [μ M]		
Ulixertinib [μ M]	0.1	0.5	1
2	0.031	0.02	0.022
4	0.027	0.02	0.018
6	0.013	0.016	0.015
RH41	S63845 [μ M]		
Ulixertinib [μ M]	0.01	0.05	0.1
2	0.019	0.004	0.003
4	0.009	0.003	0.003
6	0.002	0.002	0.002
RH30	S63845 [μ M]		
Ulixertinib [μ M]	0.1	0.5	1
2	0.262	0.254	0.245
4	0.338	0.294	0.316
6	0.325	0.325	0.312
RD	S63845 [μ M]		
Ulixertinib [μ M]	2	4	8
1	0.007	0.004	0.001
5	0	0.001	0.00E+00
10	0	8.96E-05	1.18E-05
TE381.T	S63845 [μ M]		
Ulixertinib [μ M]	2	4	8
1	0	0	0
5	0.001	0.001	9.08E-05
10	0.001	0.001	1.17E-05
RH18	S63845 [μ M]		
Ulixertinib [μ M]	0.1	0.5	1
2	0.095	0.063	0.063
4	0.086	0.044	0.044
6	0.066	0.031	0.036

Suppl. Table. 2. Synergistic cell death induction upon SCH772984/S63845. Bliss synergy scores were calculated using SynergyFinder tool as described in Materials and Methods for data shown in Suppl. Fig. 1A.

Cell Line	Bliss Synergy Score
RMS13 (FP, RAS wt)	31.265
RH41 (FP, RAS wt)	36.926
RD (FN, RAS mut)	27.094
RH18 (FN, RAS wt)	12.807