



ELSEVIER

Contents lists available at ScienceDirect

## International Journal of Infectious Diseases

journal homepage: [www.elsevier.com/locate/ijid](http://www.elsevier.com/locate/ijid)

## Short Communication

## Time discrepancy for tuberculosis-negative microscopy and culture - the diagnostic gap remains: systematic analysis from a large tertiary care tuberculosis-clinic, Germany 2013-2017



Johanna Kessel<sup>1</sup>, Elif Göymen<sup>1</sup>, Timo Wolf<sup>1</sup>, Nils Wetzstein<sup>1</sup>, Claus Küpper-Tetzel<sup>1</sup>, Pia Behrens<sup>1</sup>, Frauke Borgans<sup>1</sup>, Ümniye Balaban<sup>2</sup>, Michael Hogardt<sup>3</sup>, Thomas A. Wichelhaus<sup>3,#</sup>, Christoph Stephan<sup>1,#,\*</sup>

<sup>1</sup> Department of Internal Medicine, Infectious Diseases, University Hospital Frankfurt, Goethe University, Frankfurt, Germany

<sup>2</sup> Department of Medicine, Institute of Biostatistics and Mathematical Modelling, Goethe University Frankfurt, Frankfurt, Germany

<sup>3</sup> Institute of Medical Microbiology and Infection Control, University Hospital Frankfurt, Goethe University, Frankfurt, Germany

## ARTICLE INFO

## Article history:

Received 13 April 2023

Revised 29 May 2023

Accepted 11 July 2023

## Keywords:

Open pulmonary tuberculosis

De-isolation

Sputum smear-negative

Culture positive

TB-therapy

## ABSTRACT

**Objectives:** Patients with open pulmonary tuberculosis (opTB) are subject to strict isolation rules. Sputum smear microscopy is used to determine infectivity, but sensitivity is lower than for culture. This study aimed to investigate the clinical relevance of this mismatch in contemporary settings.

**Methods:** Differential results between microscopy and culture were determined at the time of microscopic sputum conversion, from all patients with opTB between 01/2013 and 12/2017. In addition, data on HIV, multi/extensive drug-resistant TB status, time to smear- and cultural-negativity conversion were analyzed; and a Kaplan-Meier curve was developed.

**Results:** Of 118 patients with opTB, 58 had demographic data available for microbiological and clinical follow-up analysis; among these, 26 (44.8%) had still at least one positive culture result. Median time from opTB-treatment initiation to full microscopic sputum- or culture conversion, was 16.5 days (range 2–105), and 20 days (1–105), respectively (median difference: +3.5 days). Sixteen days after de-isolation, >90% had converted culturally. HIV- or multi/extensive drug-resistant TB status did not impact conversion time.

**Conclusion:** When patients with opTB were de-isolated after 3 negative sputum smear microscopy tests, a substantial part still revealed cultural growth of *Mycobacterium tuberculosis* complex, but it remains unclear, whether smear-negative and culturally-positive individuals on therapy are really infective. Thus, the clinical relevance of this finding warrants further investigation.

© 2023 The Author(s). Published by Elsevier Ltd on behalf of International Society for Infectious Diseases.

This is an open access article under the CC BY license (<http://creativecommons.org/licenses/by/4.0/>)

## Introduction

Tuberculosis (TB) is still a major cause of morbidity and mortality worldwide [1] and therefore, the public healthcare viewpoint of TB infection control and prevention suggests isolating patients with “open” pulmonary TB (opTB) [2]. Traditionally, whether patients are categorized as “open” or not, depends on microscopic detection of acid-fast bacilli obtained from respiratory samples. In this regard, the patient’s status can promptly be provided by clin-

ical routine microscopy results. It could be shown, that the quantity of acid-fast bacilli in sputum smears correlates with the time to culture positivity for *M. tuberculosis* before and during TB treatment [3]. In contrast, it takes up to 8–12 weeks, until definitively negative cultural results are available. Because culture is more sensitive than microscopy [4], a diagnostic gap can result, if subjects match criteria for microscopic sterility, but still can be open by culture at low pathogen density and thus, theoretically, may be infectious to close contact persons. Scientific knowledge on this clinically relevant time gap between microscopic- and cultural-negativity is well-known for decades [5], however, diagnostic investigations have hardly been undertaken while patients have been treated in modern diagnostic and therapeutic time era [6]. The purpose of this retrospective analysis was to identify the rate of posi-

\* Corresponding author. Tel.: 0049-69-6301-5452; fax: 0049-69-6301-6378.

E-mail address: [c.stephan@em.uni-frankfurt.de](mailto:c.stephan@em.uni-frankfurt.de) (C. Stephan).

# Thomas A. Wichelhaus and Christoph Stephan contributed equally.

**Table 1**  
Demographics and characteristics of analysis cohort patients (n=58).

Parameter		Analysis cohort (n=58)		
		N (%)	Median (range)	Mean (+/-SD)
Age [years]:			30.92 (9.3;78.1)	36.3 (+/- 17.1)
Gender:	Female	19 (32.8)		
Origin:	European	24 (41.4)		
	African	16 (27.6)		
	other	7 (12.1)		
	unknown	11 (19)		
HIV test result [n]:	Positive	6 (10.3)		
	Negative	52 (89.7)		
MDR/XDR-TB [n]:	Positive	9 (15.5)		
	Negative	49 (84.5)		
Specimen type at first diagnosis TB:				
	sputum	30 (52)		
	BAL	7 (12)		
	provoked sputum	11 (19)		
	Bronchial secretion	10 (17)		
Time [days] until first smear-negative microscopy result after first diagnosis with opTB			0.5 (0;98)	10.6 (+/- 19.6)
Time [days] until completely smear-negative (stop isolation = 3 consecutive smear-negative/microscopy after first diagnosis with opTB)			16.5 (2;105)	26.2 (+/- 28.4)
Time [days] until first culture-negative result (after first diagnosis with opTB)			13.5 (0;88)	21.1 (+/- 23)
Time [days] until completely culture-negative (non-infectious = 3 x consecutive culture-negative after first diagnosis with opTB)			20 (1;105)	32.5 (+/- 30.2)
Main lab results at first diagnosis TB:				
	Leukocytes [/nL]		8.1 (1.4; 15)	8.14 (+/- 2.9)
	(Reference value: 4-10 /nL)			
	Hemoglobine [g/dl]		11.4 (7.2; 16)	11.5 (+/- 1.92)
	(Reference value: Men 14-18g/dL; Women: 12-16g/dL)			

Legend: min – minimal range; max – maximal range; SD – standard deviation; n – number; HIV – Human-immunodeficiency virus; MDR/XDR – multi/extensive drug resistant tuberculosis; pTB – pulmonary tuberculosis; mg – milligram; dL – decilitre; mL – millilitre; opTB open pulmonary TB

tive cultural findings in subjects with initial opTB disease, at time of sputum smear conversion during controlled TB therapy, and to examine the average duration time of this unconformable finding.

## Patients, methods, and study design

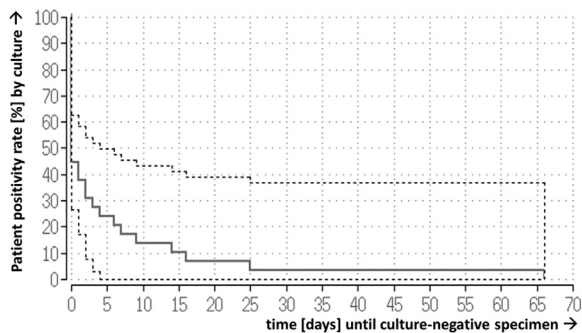
A systematic laboratory database query from a large German tertiary care university hospital identified all patients with culturally confirmed *Mycobacterium tuberculosis*-complex-infection, obtained from respiratory specimens between January 2013 and December 2017. Corresponding individuals with available data in electronic treatment charts were reviewed retrospectively for clinical and microbiological parameters, including additional microscopic and cultural findings. Routine laboratory results and demographic data were collected at time of diagnosis and during the follow-up TB treatment course. According to national infection control guidelines [2], patients with opTB have to deliver at least three consecutively negative lower respiratory tract smear samples after a 2-week course of therapy, before discharge from TB isolation, usually treated as inpatients. In addition to national guidelines, all obtained respiratory tract specimens requested for acid-fast bacilli staining underwent both smear microscopy and cultural testing, after a routine local laboratory departmental note, and was repeated in case of any positivity. All individuals were followed as outpatients in the same clinical department after de-isolation. Appointment schedules were individualized, as needed for e.g., drug toxicity checks. At any visit, patients were asked to deliver a sputum sample for smear testing. Treatment was in concordance with contemporary national therapy guidelines principles [5]. The study was approved by the Frankfurt University Medical School Ethics Committee (Vote-No. 2018-195, September 20, 2018).

Continuous variables were displayed as both mean ( $\pm$ SD) and median (ranges), and categorical variables as frequencies and percentages. Kaplan-Meier-curve showed the time until culture conversion, following negative smear microscopy. All calculations were carried out with R for Statistical Computing (The R Foundation, v4.0, Vienna, Austria) and BiAS (BIAS for Windows, v11).

## Results

Overall, of the 118 patients with cultural-positive opTB, we identified 58 as the study analysis cohort, eligible for further analysis by simultaneously available culture- and smear follow-up results. The remaining 60 individuals were excluded due to the following reasons (multiple nominations allowed): non-evaluable TB regimens (57%), missing documents (27%), death before conversion (12%), and loss of follow-up (17%). Most patients originated from (central/eastern) Europe (43.2%), followed by (in particular) sub-Saharan Africa (21.2%), Asia (12.7%), and various or unknown (22.9%). HIV-coinfection was reported in 12.7%. A detailed characterization of the remaining analysis cohort is presented in Table 1.

Mean time from TB diagnosis establishment and subsequent anti-TB therapy initiation to microscopic negativity, was on average 26.2 days (SD  $\pm$  28.4), compared to 32.5 days (SD  $\pm$  30.2) for cultural-negativity, each in three consecutive specimens; the median respective time periods were 16.5 days (range 2-105), and 20 days (1-105), with a difference of +3.5 days (Table 1). Of those who had just reached microscopic sterility (n = 58), there were still 26 (44.8%, 95% confidence interval: 27-62.7%) positive by residual cultural growth of *M. tuberculosis* in at least one specimen obtained from the respiratory tract. Culture negativity rates in the small subgroups of HIV-positive (n = 6) and multi/extensive



**Figure 1.** Kaplan-Meier-curve shows the time gap for reaching culture negativity (per individual, from analysis cohort,  $n = 58$ ), after microscopy conversion to negative for acid-fast bacilli in consecutive three probes (=baseline), obtained from the respiratory tract. Findings are displayed in solid lines (confidence intervals in dashed lines).

drug-resistant TB-affected individuals ( $n = 9$ ), did not differ from other patients with opTB without HIV, or those with susceptible TB isolates, respectively (data not shown). The Kaplan-Meier-curve (Figure 1) for the analysis cohort ( $n = 58$ ) shows the temporal difference between cultural and microscopic negativity, i.e., the diagnostic gap at time of de-isolation. During follow-up, >90% had culturally cleared TB 16 days later. Only 1 of 58 individuals remained positive by culture beyond day 25, for a total time period of 65 days.

## Discussion

In low TB-burden countries, smear-negative and culture-positive sputum patients may account for relevant transmission rates, of up to 17% [7]. Therefore, this large monocentric retrospective German cohort study aimed to investigate the diagnostic gap and the probability of discordant results between smear microscopy- and culture conversion in de-isolated patients with previous opTB. Most patients (>50%) with initial opTB, revealed no growth of *M. tuberculosis* after three consecutively negative respiratory specimen probes. However, 26 of 58 individuals (44.8%) from the analysis cohort were still culturally-positive, when de-isolation criteria had been fulfilled - and thus could theoretically still infect contact persons. The clinical importance of that “diagnostic lagtime” may define a potential “latent infectious risk”. Although, even more relevant than any bacteriological sputum-finding, seems to be the time on effective anti-TB therapy, as discussed within the literature [8,9], and this was confirmed by the second finding in our study: the probability of a positive cultural finding diminished rapidly on continued controlled anti-TB therapy, and growth was only exceptionally observed after >7-14 days following smear-negativity (see Figure 1).

The true infectivity for only culture-positive subjects is hard to determine during effective treatment, because one single viable bacterium in the sample may turn the culture test result qualitatively positive, but hardly will mean infectivity of the person. Beyond the only evidence, better the number of viable bacteria in the sputum sample will correlate with the patient’s infectivity, in particular after a prolonged time on controlled therapy. Evidence of acid-fast bacilli in sputum smear or molecular testing, would not necessarily mean TB infectivity, because detection cannot distinguish between viable and nonviable *M. tuberculosis* [10].

This investigation has several limitations, including low case number, and documentation in a retrospective study design, probably resulting in failing statistical significance and broad confidence intervals in Kaplan-Meier curve. This observation may be explained by a broad clinical case spectrum, including cavitary lung and mi-

nor infiltrative TB, with variable bacterial load. Therefore, conclusions should be drawn with caution from the findings. The latter could be overcome by higher case numbers and prospective settings.

In conclusion, we found a substantial part of patients with opTB, still revealed cultural growth of *M. tuberculosis*, when isolation duty was lifted after 3 negative sputum smear microscopy tests. This finding had vanished for >90% of previously opTB subjects 16 days later. Further studies are warranted, to investigate the clinical impact of this finding and its’ repeatability, and/or what consequences regarding the prolongation of contact precautions may be drawn.

## Declarations of Competing Interest

Johanna Kessel and Nils Wetzstein declare no conflicts of interest; Michael Hogardt reports grants from Mukoviszidose Institut gGmbH and the German Federal Ministry of Health, lecture honoraria from Landesärztekammer Hessen, bioMérieux and Pfizer, and funding from Merck AG. Thomas A. Wichelhaus reports research grants from MSD, Deutsche Krebshilfe, as well as speaker fees and consulting honoraria from Insmmed, Osartis; Christoph Stephan received speaker fees/consulting/scientific conference sponsoring from AbbVie, ViiV, Gilead, MSD, Janssen, TAD. All received grants and financial support from all authors are declared outside the submitted work.

## Funding

All investigators are employees or scientifically related to Frankfurt University Hospital, Goethe University; this is an investigator-initiated study that did not receive any specific additional funding. Nils Wetzstein reported funding from the Research and Education Deanery, University Hospital Frankfurt, and the German Center for Infection Research (DZIF).

## Acknowledgments

We thank all physicians, nurses, and laboratory personnel involved in the management of patients with TB at our center. We further thank all involved patients and their families.

## Author contributions

C. Stephan: conception and design, data acquisition, interpretation, writing the first draft, final validation, submission, project administration, supervision. J. Kessel: data acquisition, writing first draft, review, and approval. E. Göymen: major data analysis, interpretation, critical review, final approval. Ü. Balaban: formal analysis, critical review, and editing, final approval. T. Wolf, N. Wetzstein, C. Küpper-Tetzl, P. Behrens, F. Borgans and M. Hogardt: data acquisition, interpretation, critical review, and final approval. T.A. Wichelhaus: major data acquisition and interpretation, critical review, final approval, and project supervision.

## References

- [1] World Health Organization. Global tuberculosis report 2022. Geneva: World Health Organization, 2022.
- [2] Ziegler R, Just HM, Castell S, Diel R, Gastmeier P, Haas W, et al. Tuberculosis infection control—recommendations of the DZK. *Pneumologie* 2012;**66**:269–82. doi:10.1055/s-0031-1291582.
- [3] Olaru ID, Heyckendorf J, Grossmann S, Lange C. Time to culture positivity and sputum smear microscopy during tuberculosis therapy. *PLOS ONE* 2014;**9**:e106075. doi:10.1371/journal.pone.0106075.
- [4] Hepple P, Ford N, McEnerney R. Microscopy compared to culture for the diagnosis of tuberculosis in induced sputum samples: a systematic review. *Int J Tuberc Lung Dis* 2012;**16**:579–88. doi:10.5588/ijtld.11.0617.

- [5] Levy H, Feldman C, Sacho H, van der Meulen H, Kallenbach J, Koornhof H. A reevaluation of sputum microscopy and culture in the diagnosis of pulmonary tuberculosis. *Chest* 1989;**95**:1193–7. doi:[10.1378/chest.95.6.1193](https://doi.org/10.1378/chest.95.6.1193).
- [6] Desikan P. Sputum smear microscopy in tuberculosis: is it still relevant? *Indian J Med Res* 2013;**137**:442–4.
- [7] Behr MA, Warren SA, Salamon H, Hopewell PC, Ponce de Leon A, Daley CL, Small PM. Transmission of Mycobacterium tuberculosis from patients smear-negative for acid-fast bacilli. *Lancet* 1999;**353**:444–9. doi:[10.1016/S0140-6736\(98\)03406-0](https://doi.org/10.1016/S0140-6736(98)03406-0).
- [8] Brooks SM, Lassiter NL, Young EC. A pilot study concerning the infection risk of sputum positive tuberculosis patients on chemotherapy. *Am Rev Respir Dis* 1973;**108**:799–804. doi:[10.1164/arrd.1973.108.4.799](https://doi.org/10.1164/arrd.1973.108.4.799).
- [9] Dharmadhikari AS, Mphahlele M, Venter K, Stoltz A, Mathebula R, Masotla T, van der Walt M, Pagano M, Jensen P, Nardell E. Rapid impact of effective treatment on transmission of multidrug-resistant tuberculosis. *Int J Tuberc Lung Dis* 2014;**18**:1019–25. doi:[10.5588/ijtld.13.0834](https://doi.org/10.5588/ijtld.13.0834).
- [10] Arend SM, van Soolingen D. Performance of Xpert MTB/RIF Ultra: a matter of dead or alive. *Lancet Infect Dis* 2018;**18**:8–10. doi:[10.1016/S1473-3099\(17\)30695-3](https://doi.org/10.1016/S1473-3099(17)30695-3).