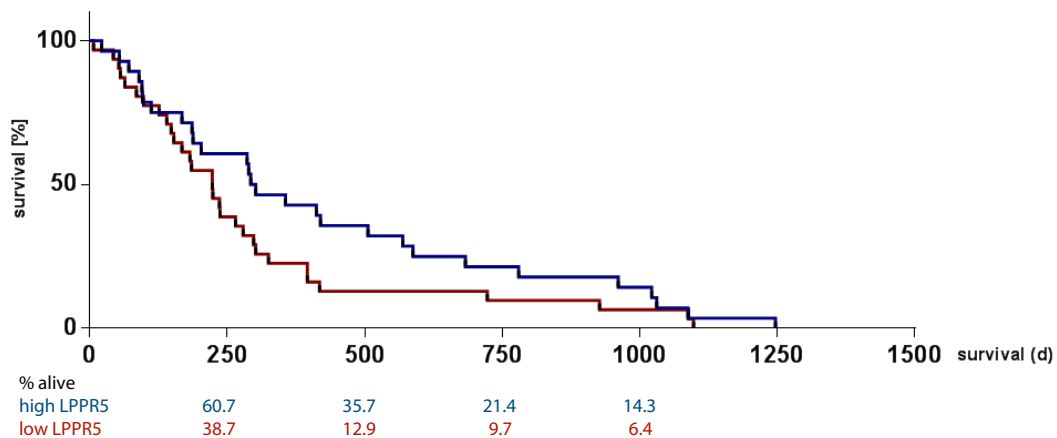


## Survival proportions in GBM



$p > 0,05$

low LPPR5 mean survival 223,0

high LPPR5 mean survival 297,5

Figure S4: Low LPPR5 mRNA expression is insignificantly associated with lower survival in GBM-patients. Kaplan-Meier survival chart using Freije Brain data accessed at Oncomine, separation expression.