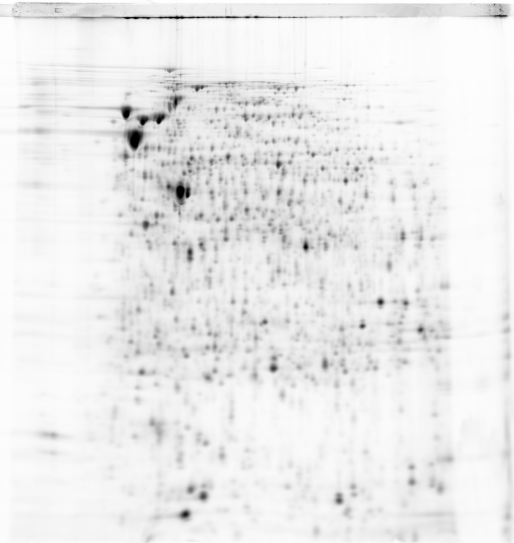
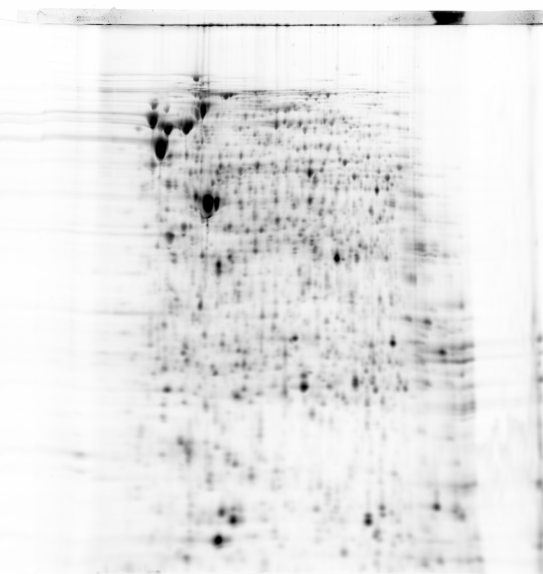


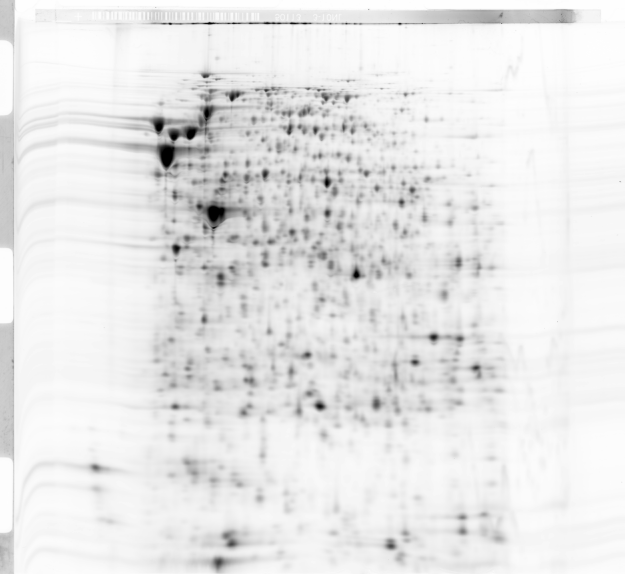
Gel 1: 37°C Rep 1



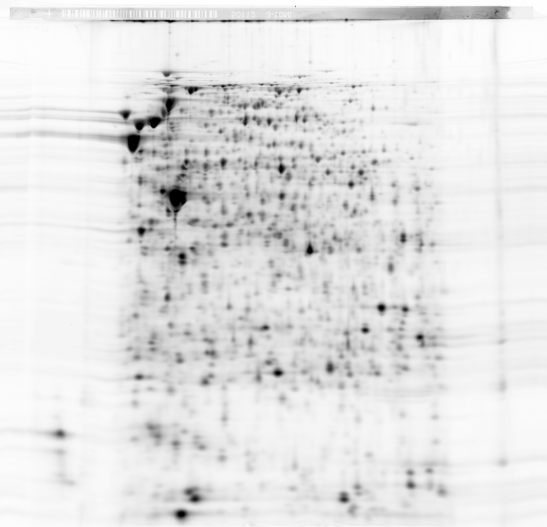
Gel 2: 37°C Rep 2



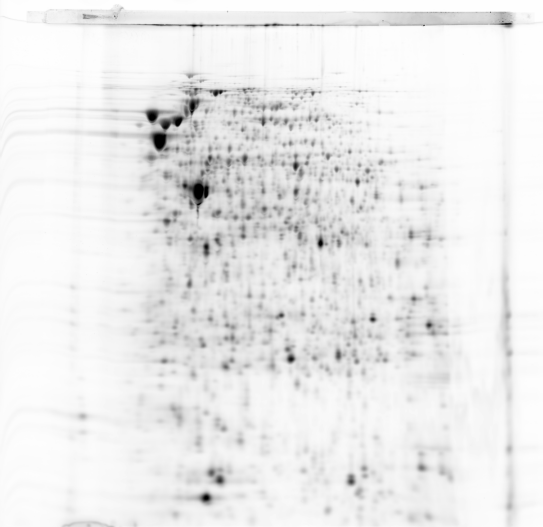
Gel 3: 37°C Rep 3



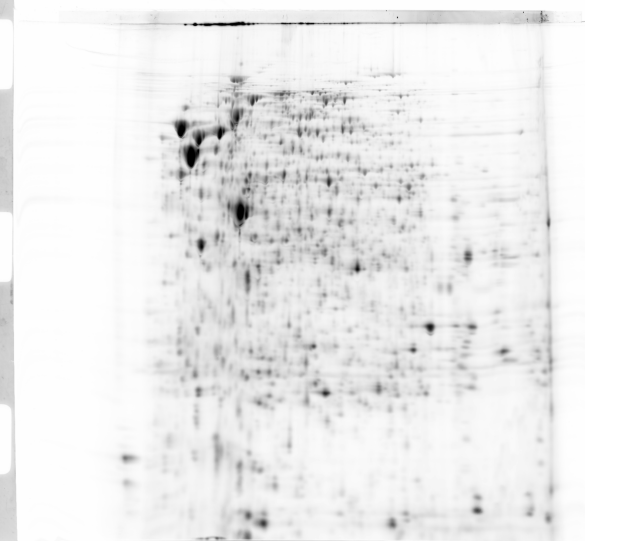
Gel 4: 28°C Rep 1



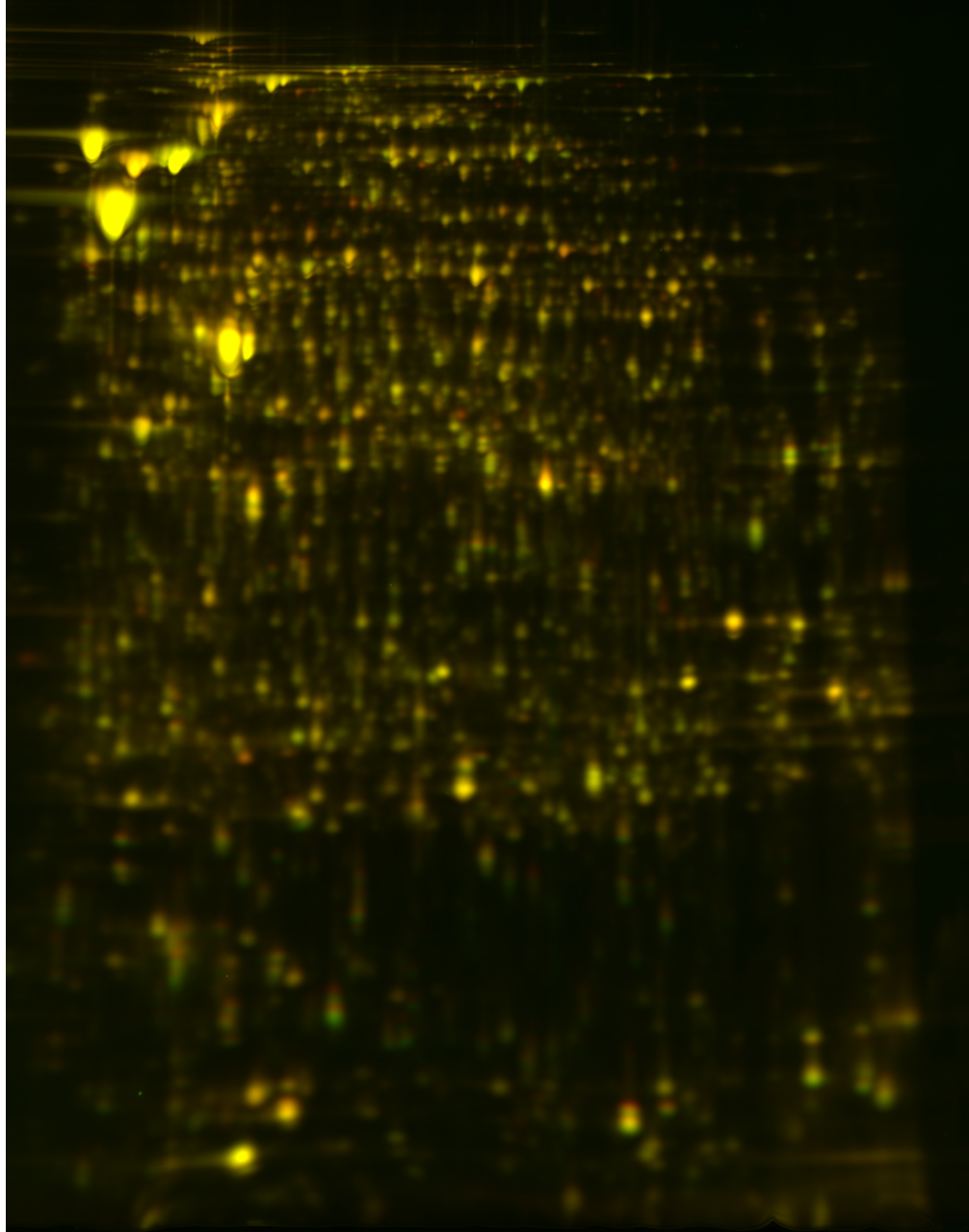
Gel 5: 28°C Rep 2



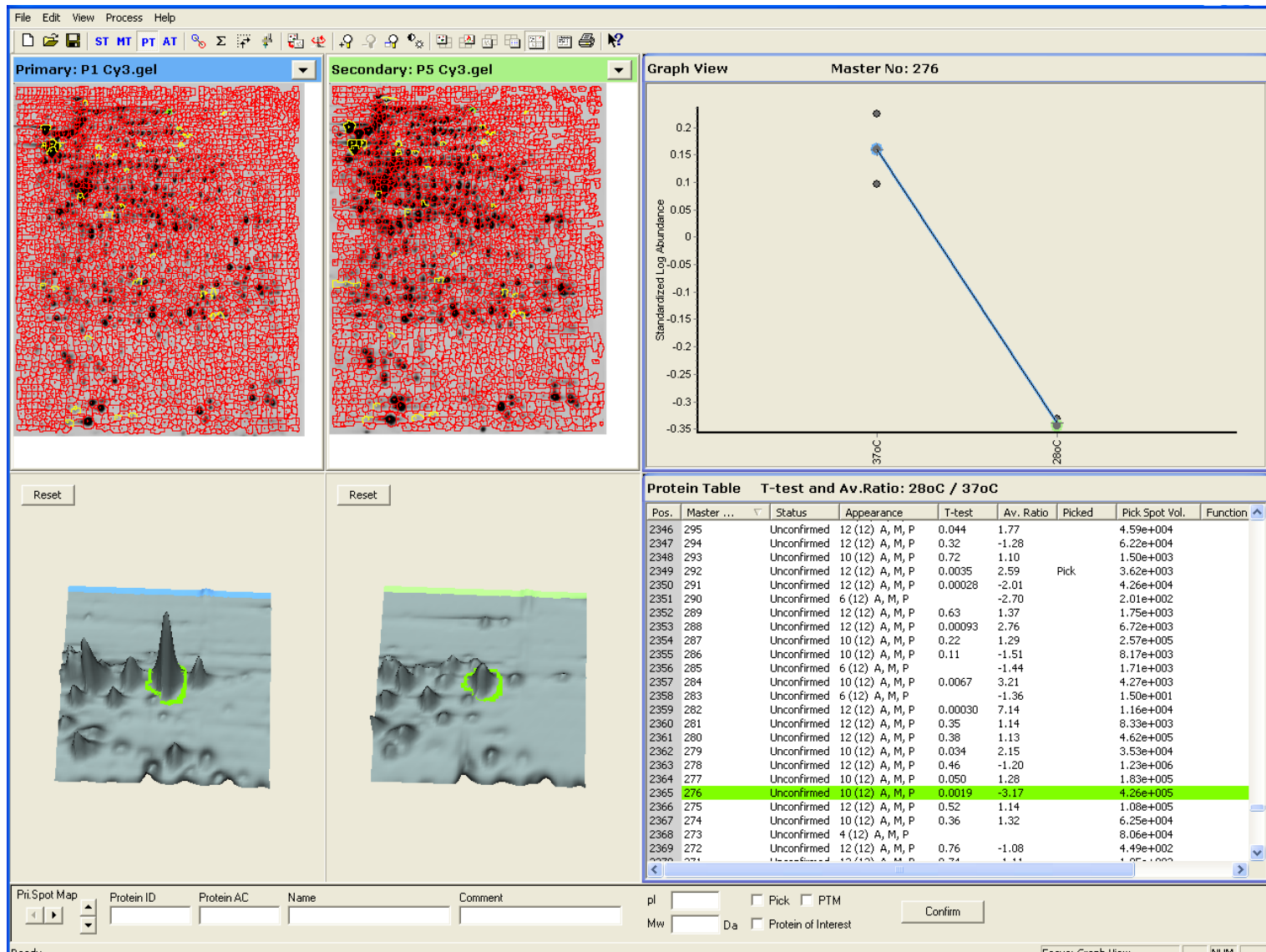
Gel 6: 28°C Rep 3



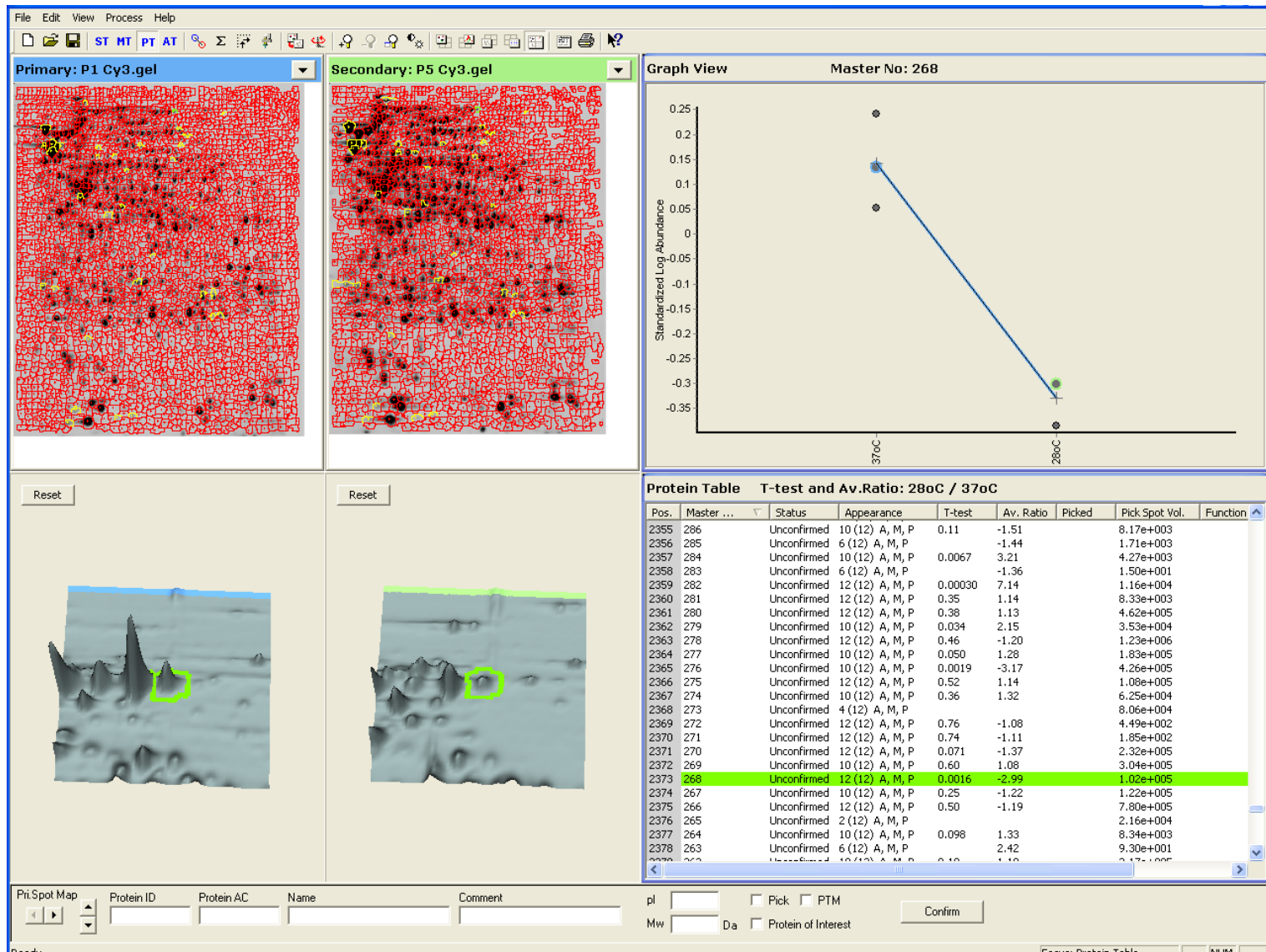
Gel 1 master image: green – cy3 labelled sample 1, red – cy5 labelled standard consisting of all the 6 samples used in experiment, yellow - where two colours overlay



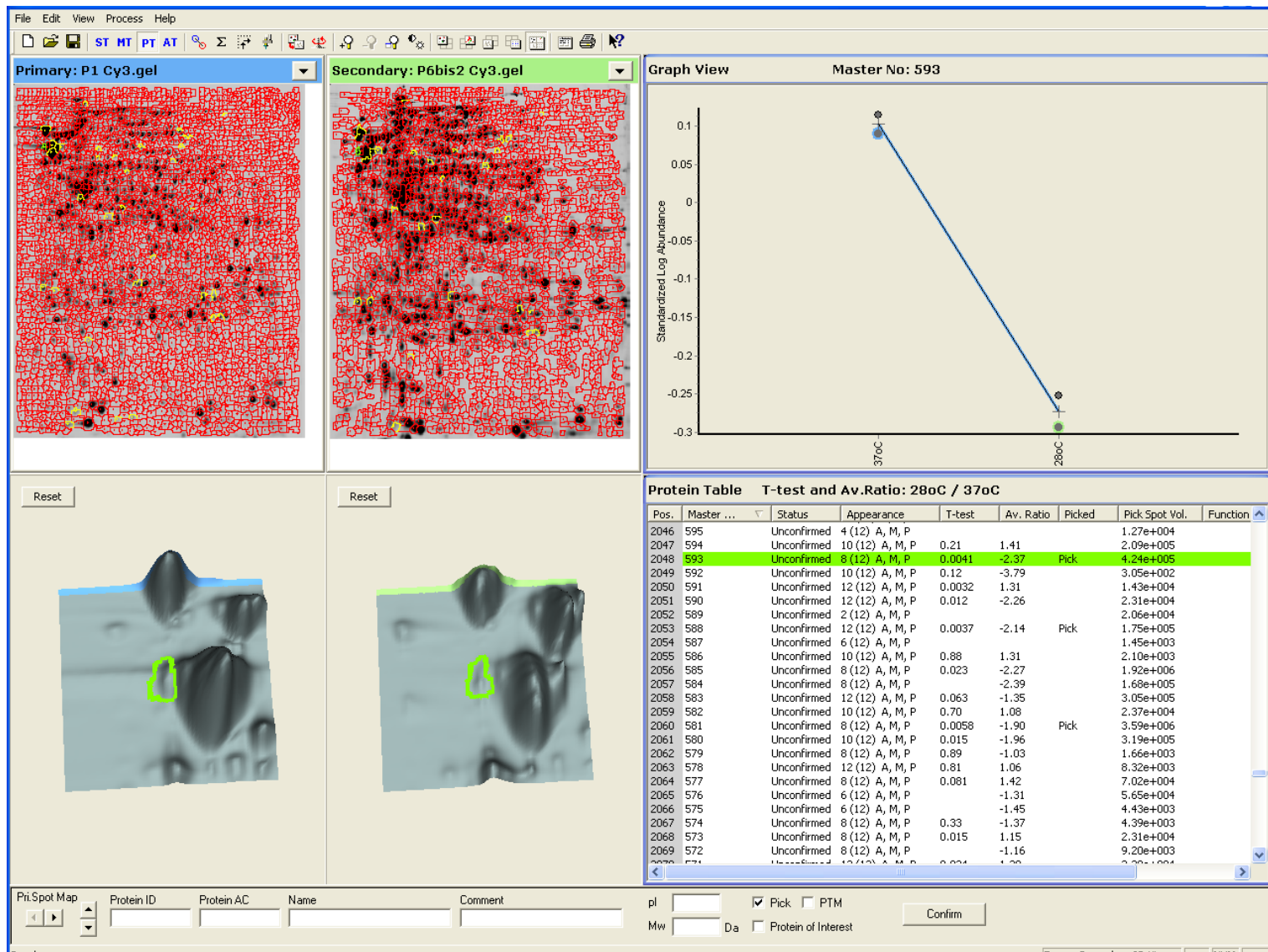
ClpB (PAU_03190)



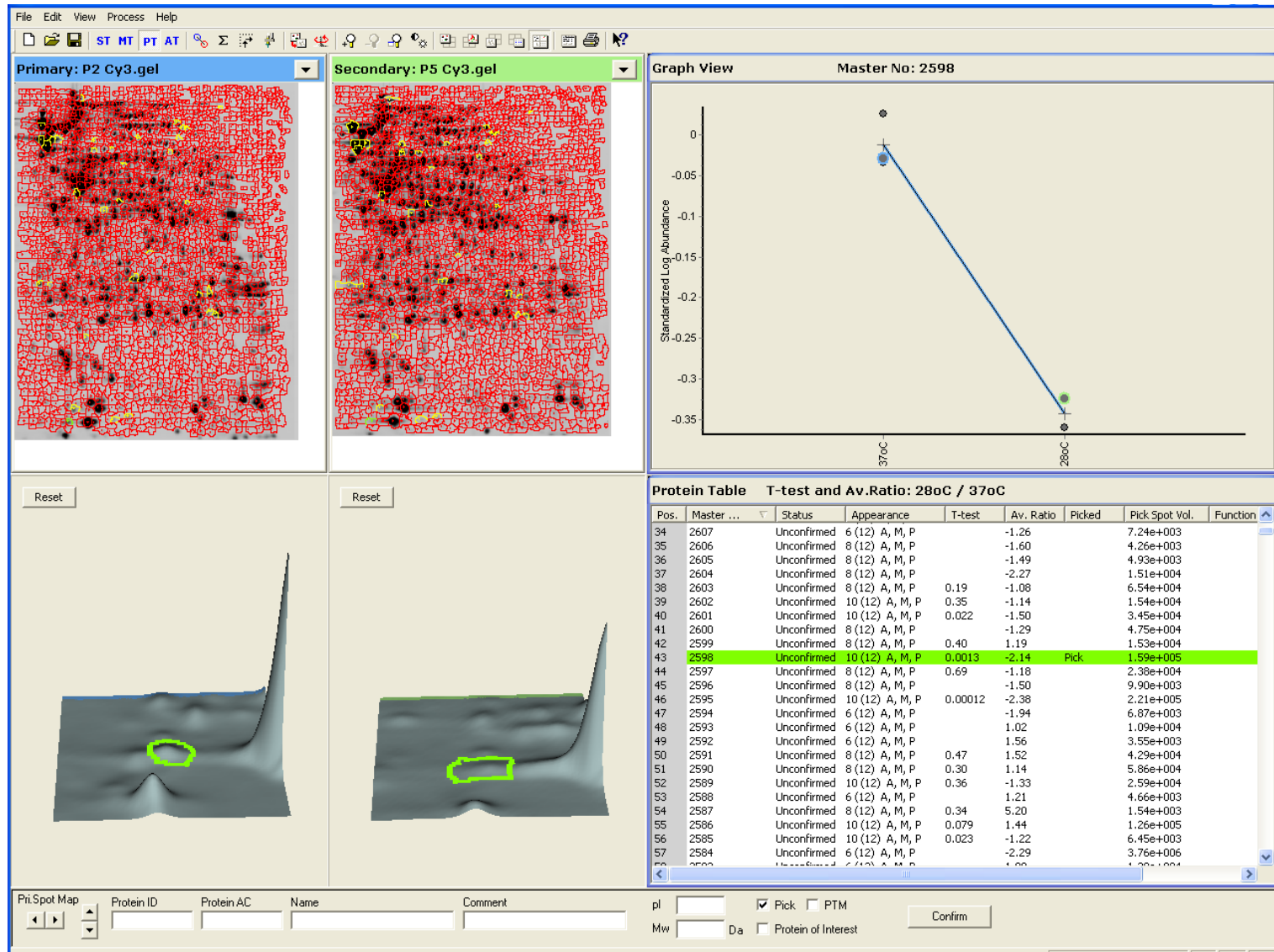
ClpB (PAU_03190)



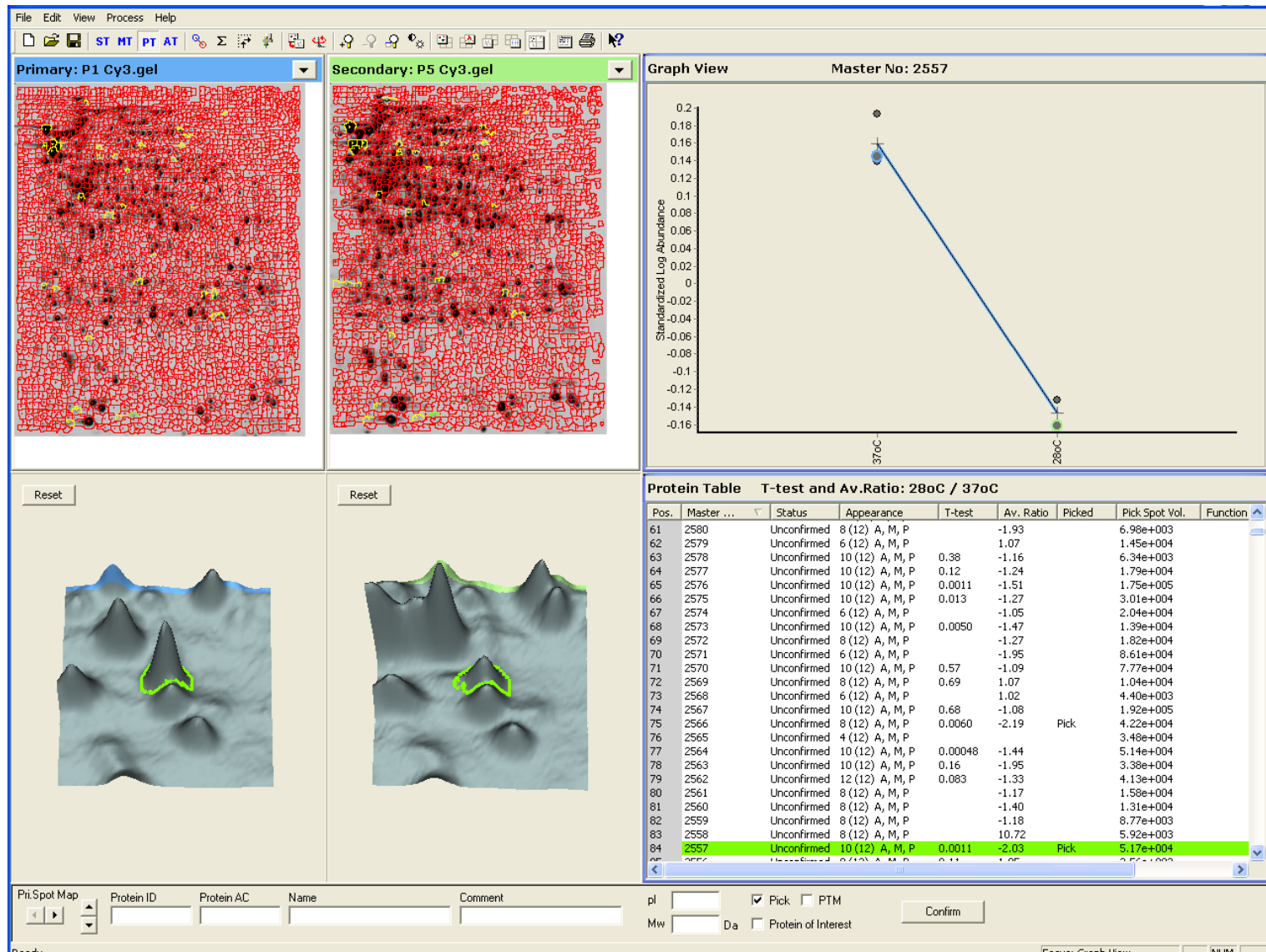
GroEL (PAU_03756)



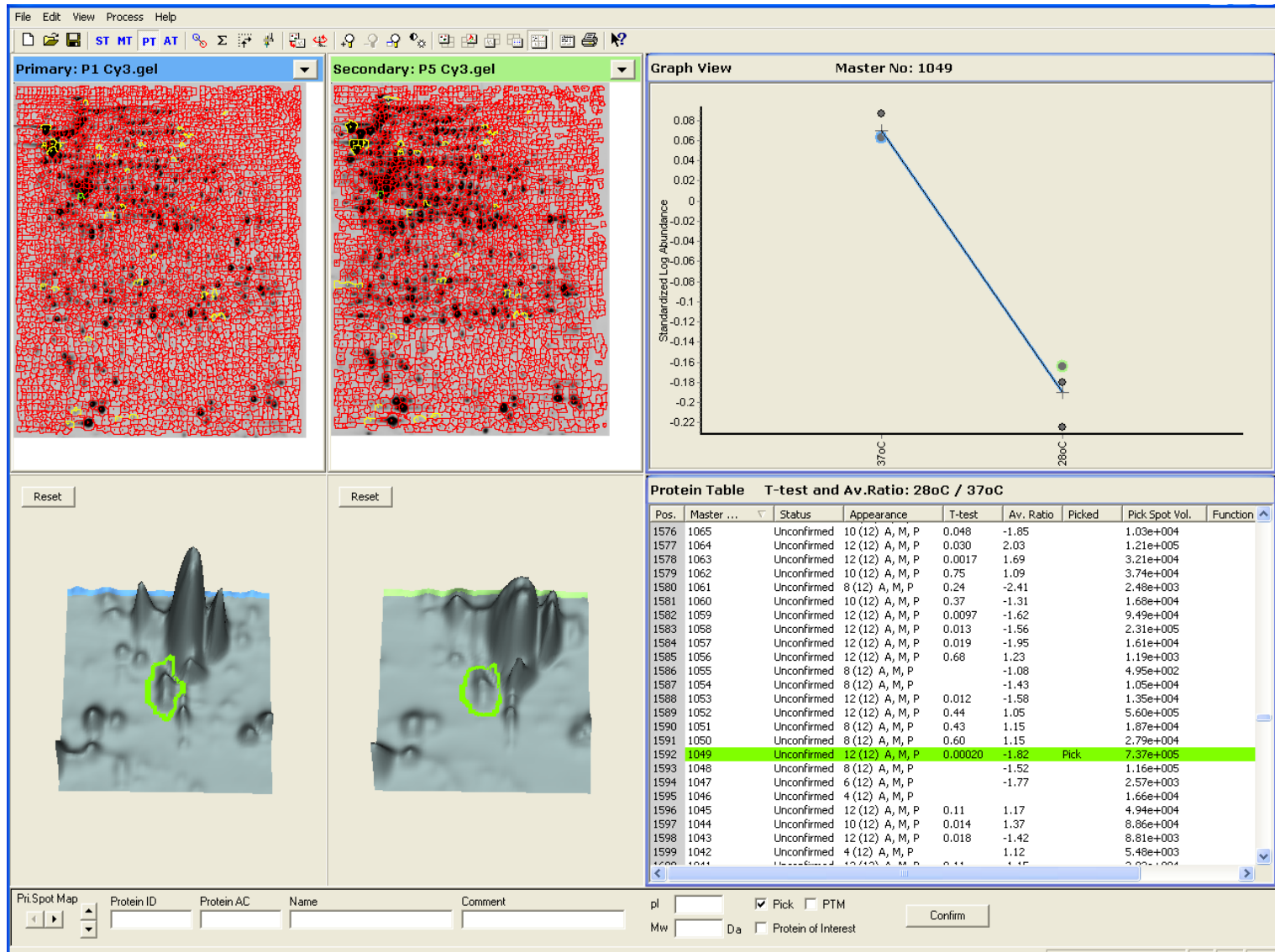
GroES (PAU_03757)



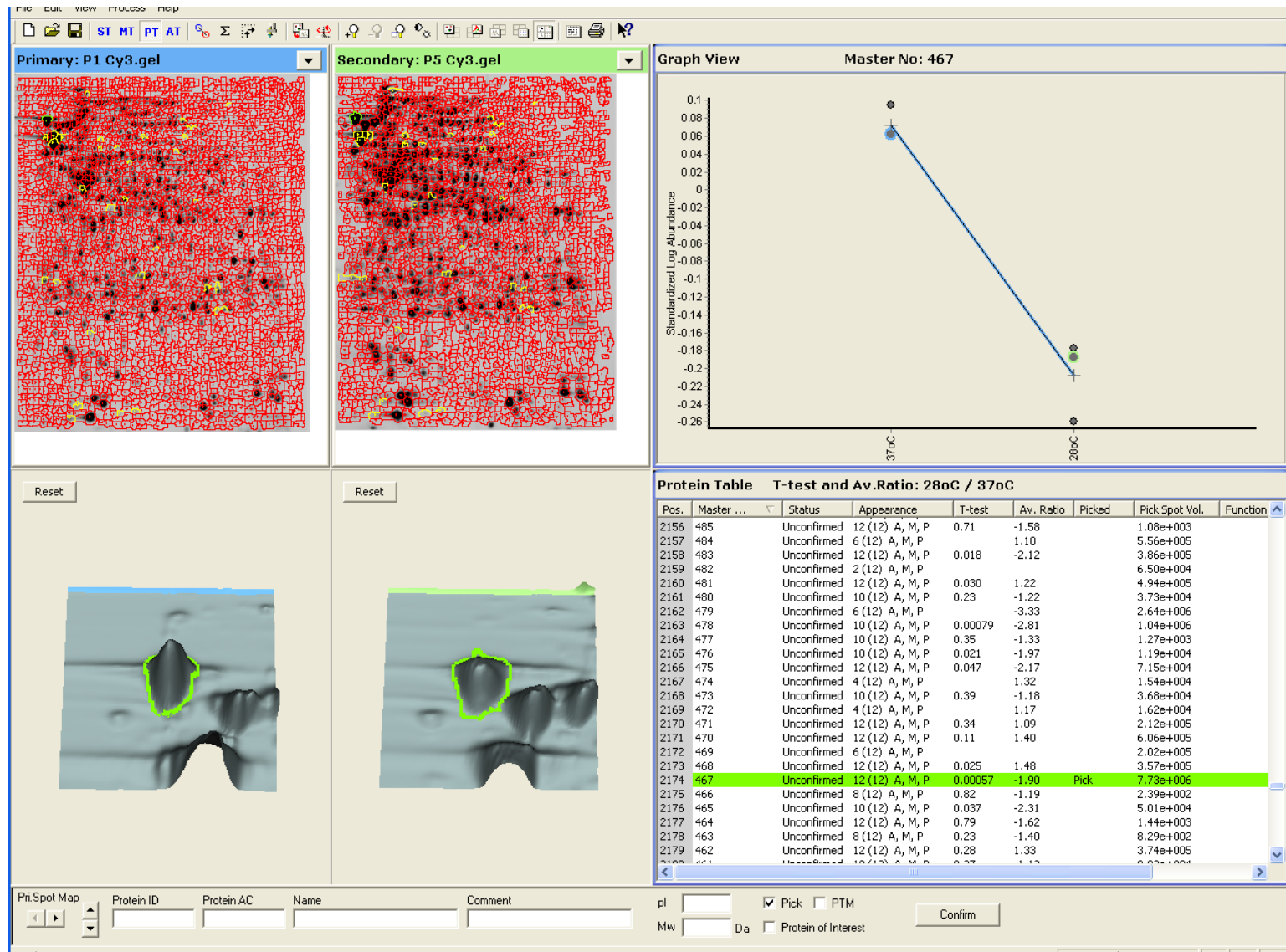
RecA (PAU_03212)



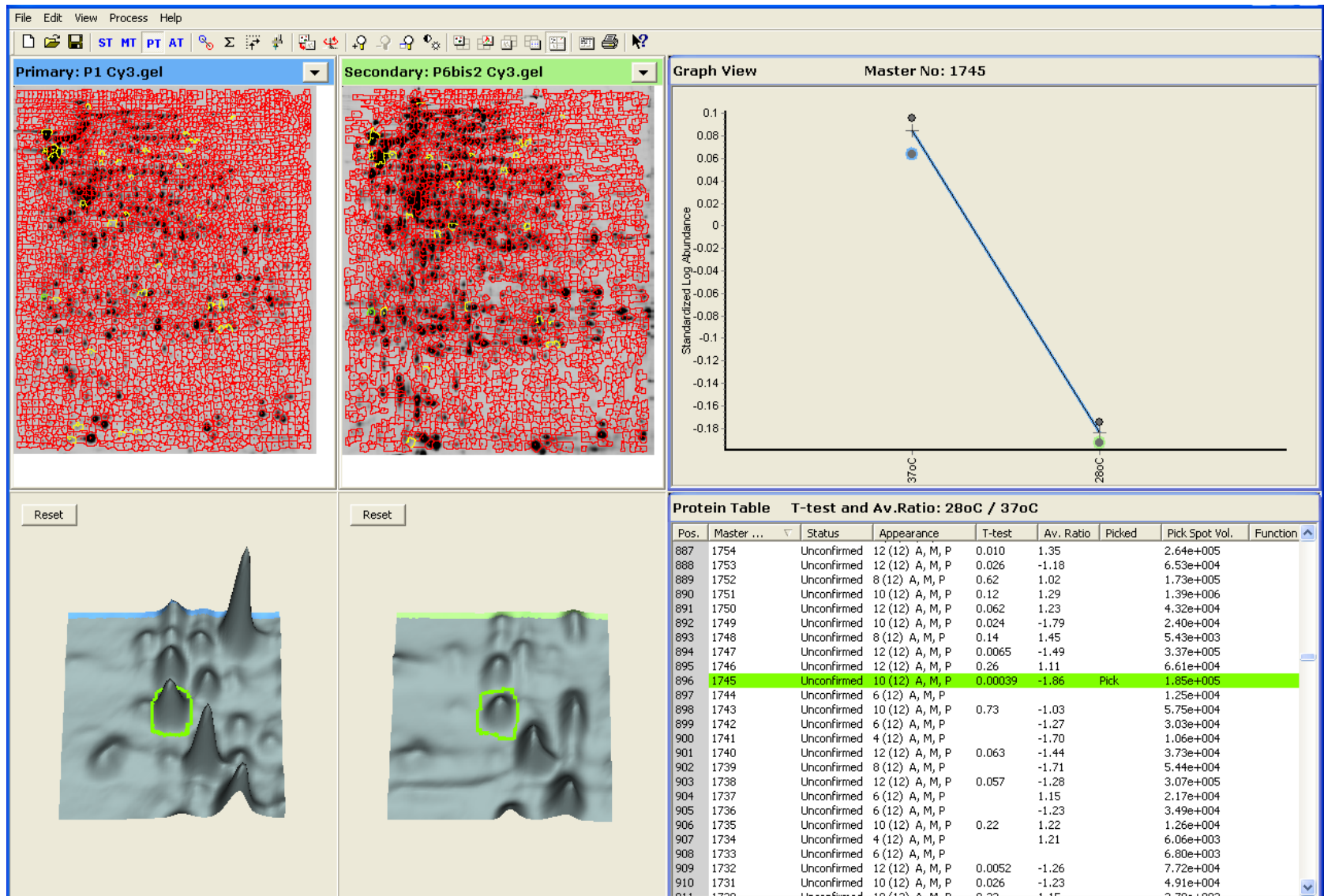
RecA (PAU_03212)



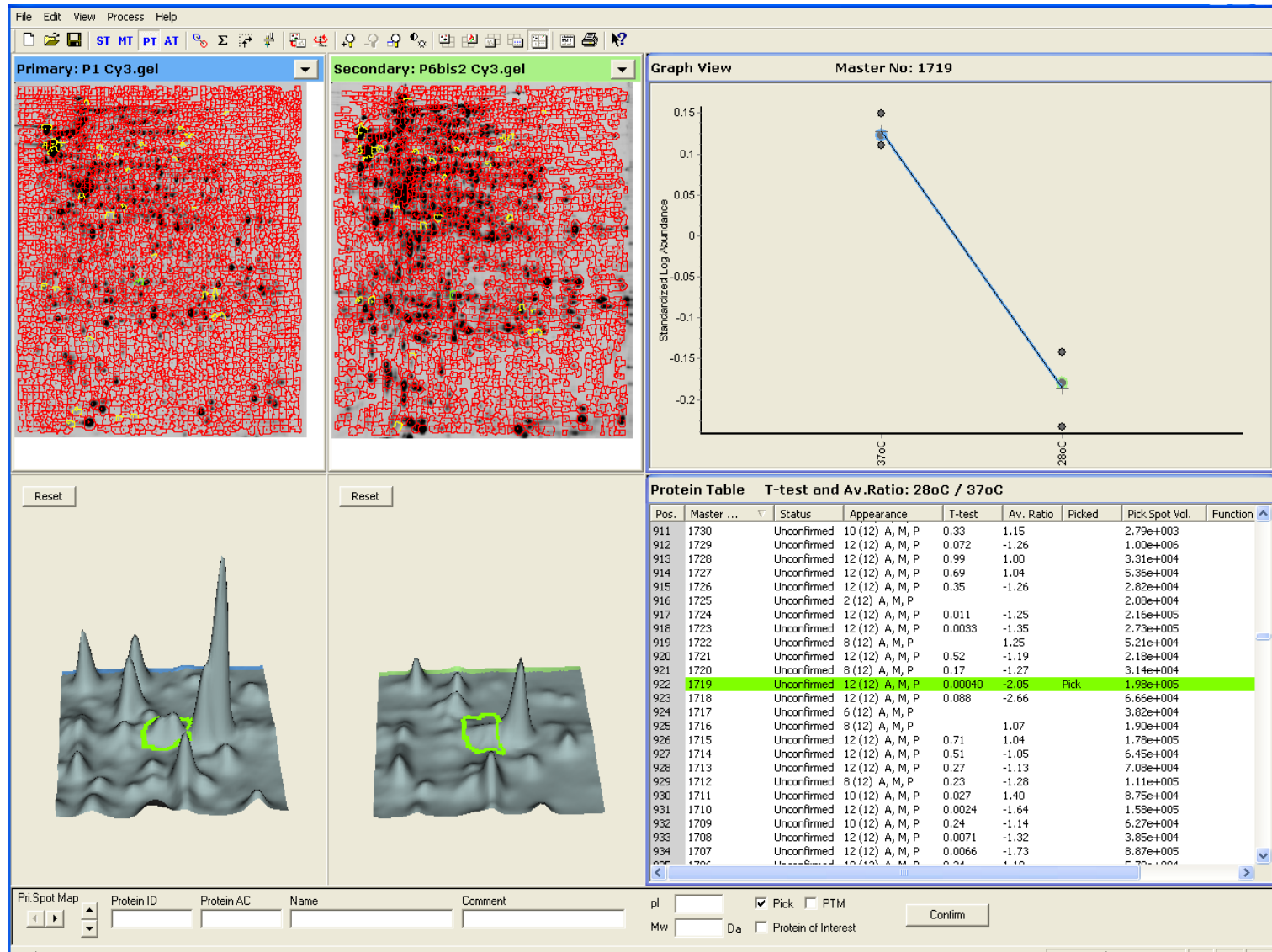
DnaK (PAU_00543)



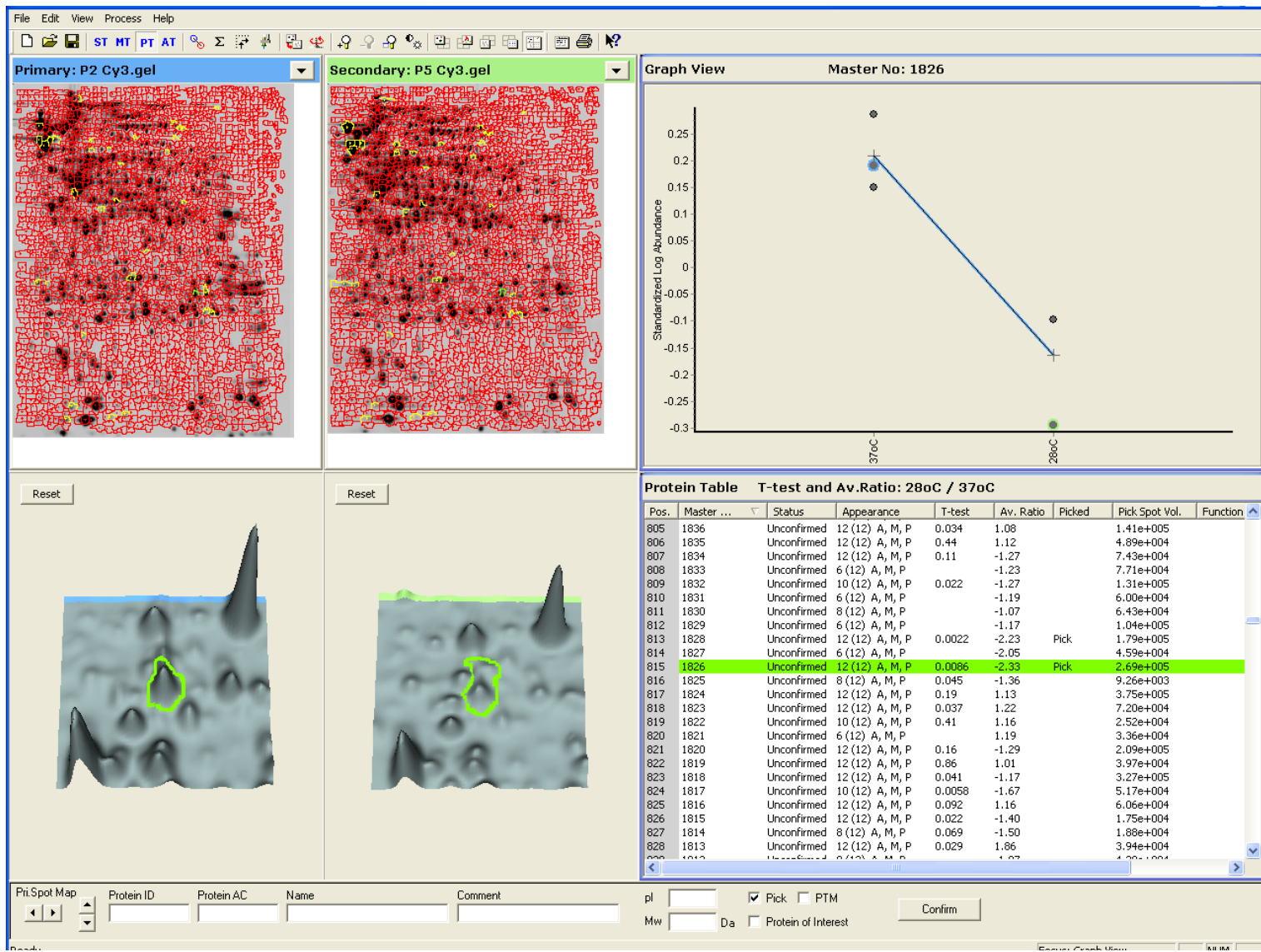
PAU_02173



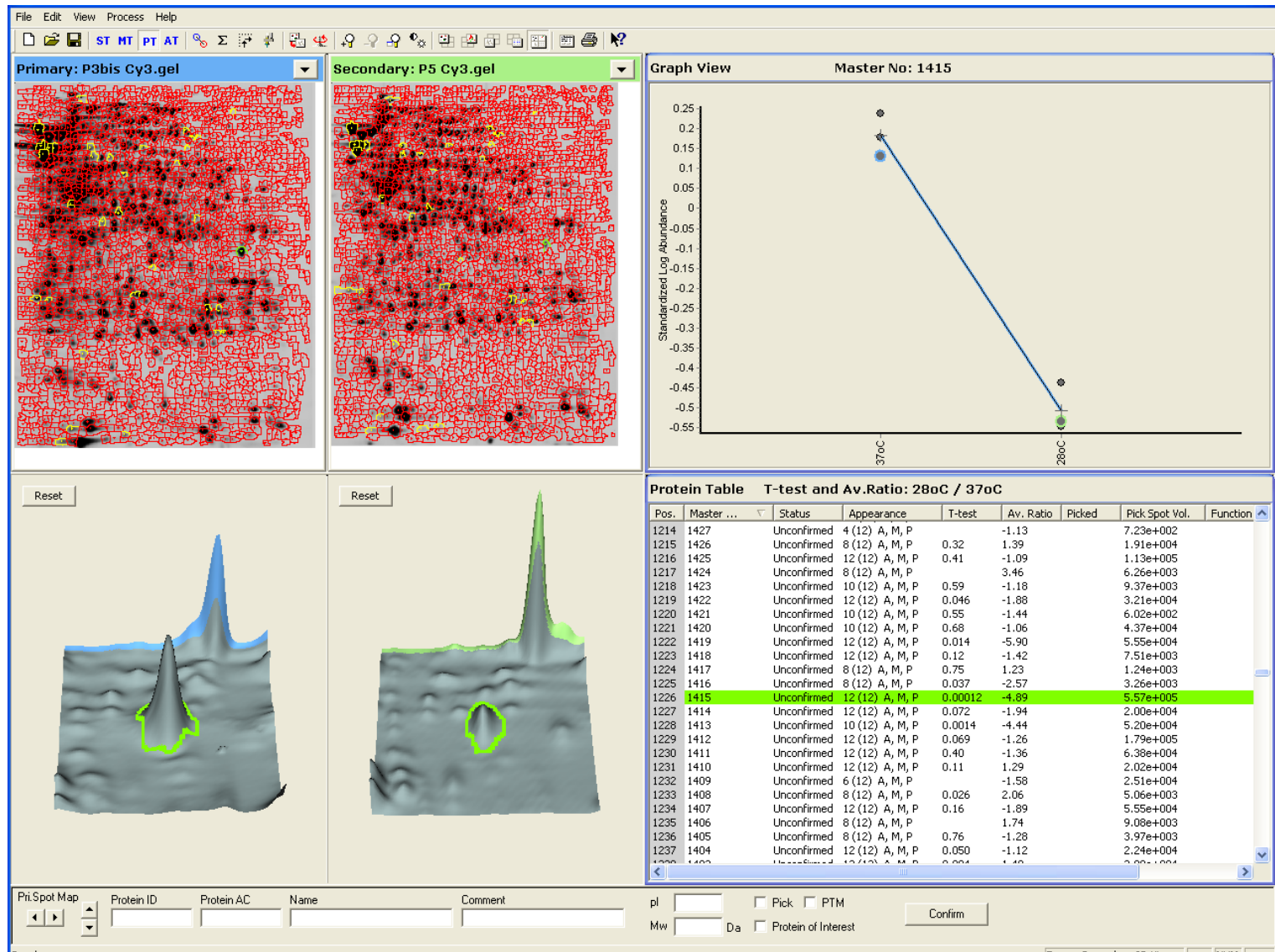
PAU_03263



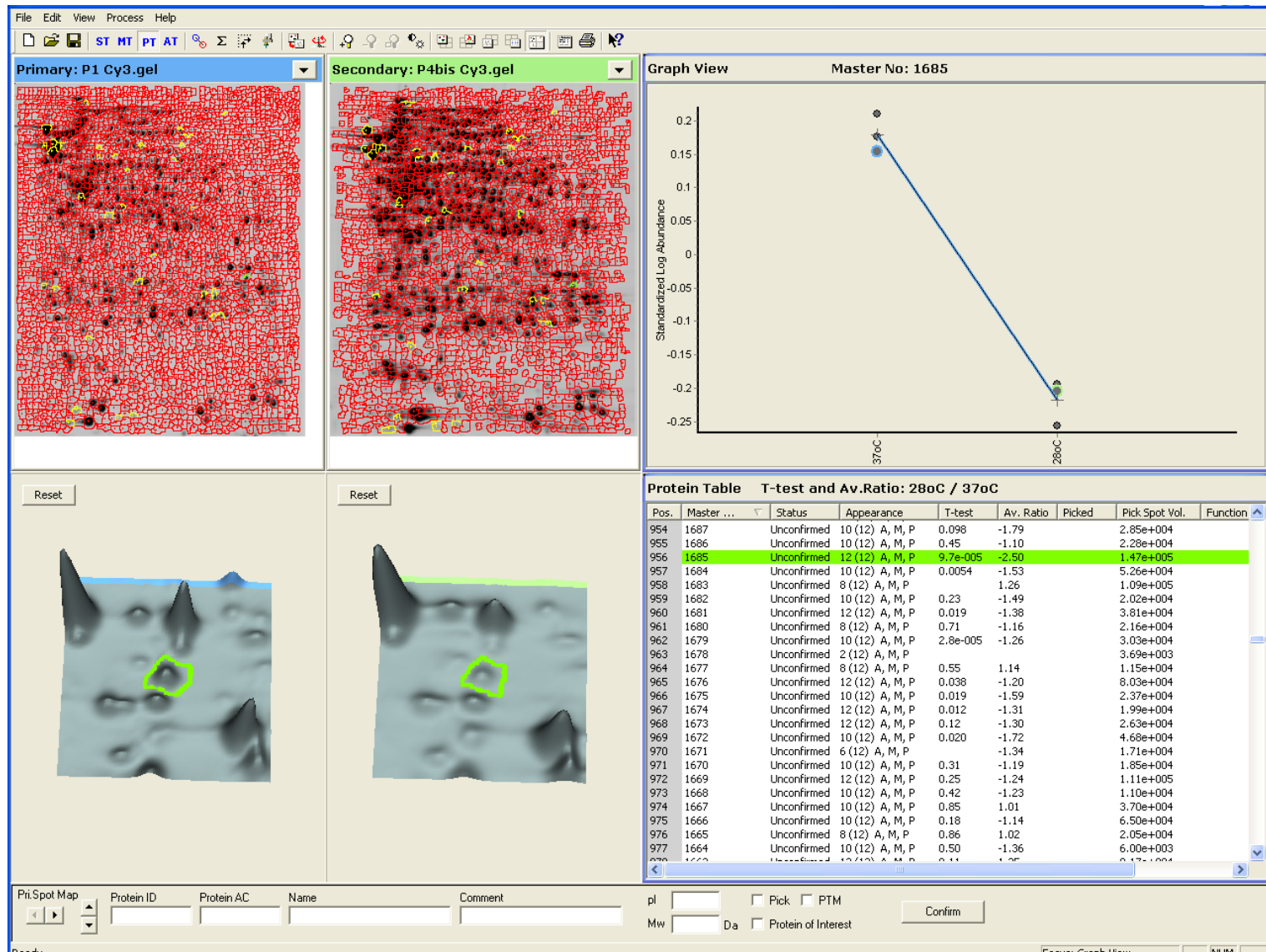
PAU_02575



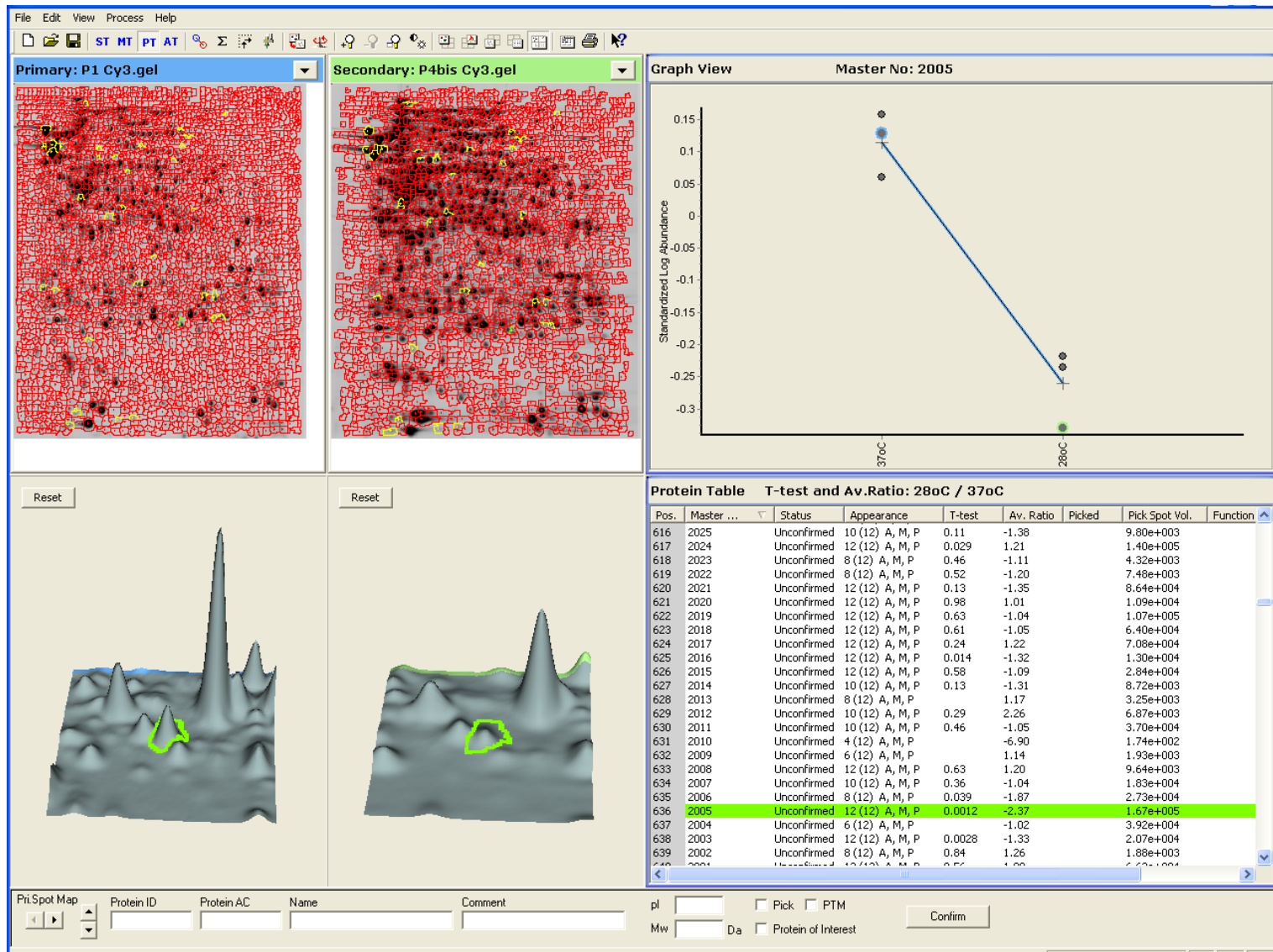
PAU_03286



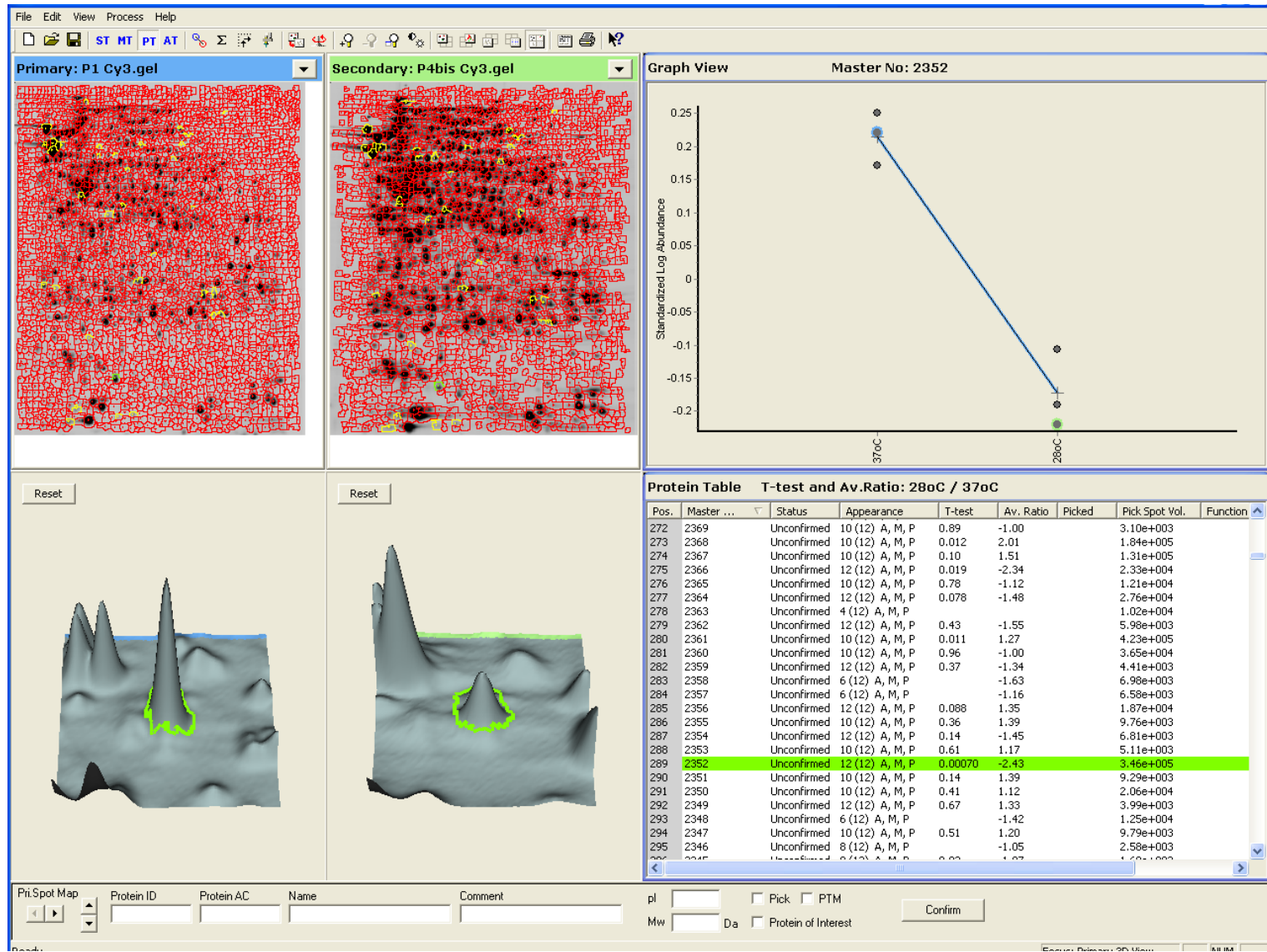
PAU_03286



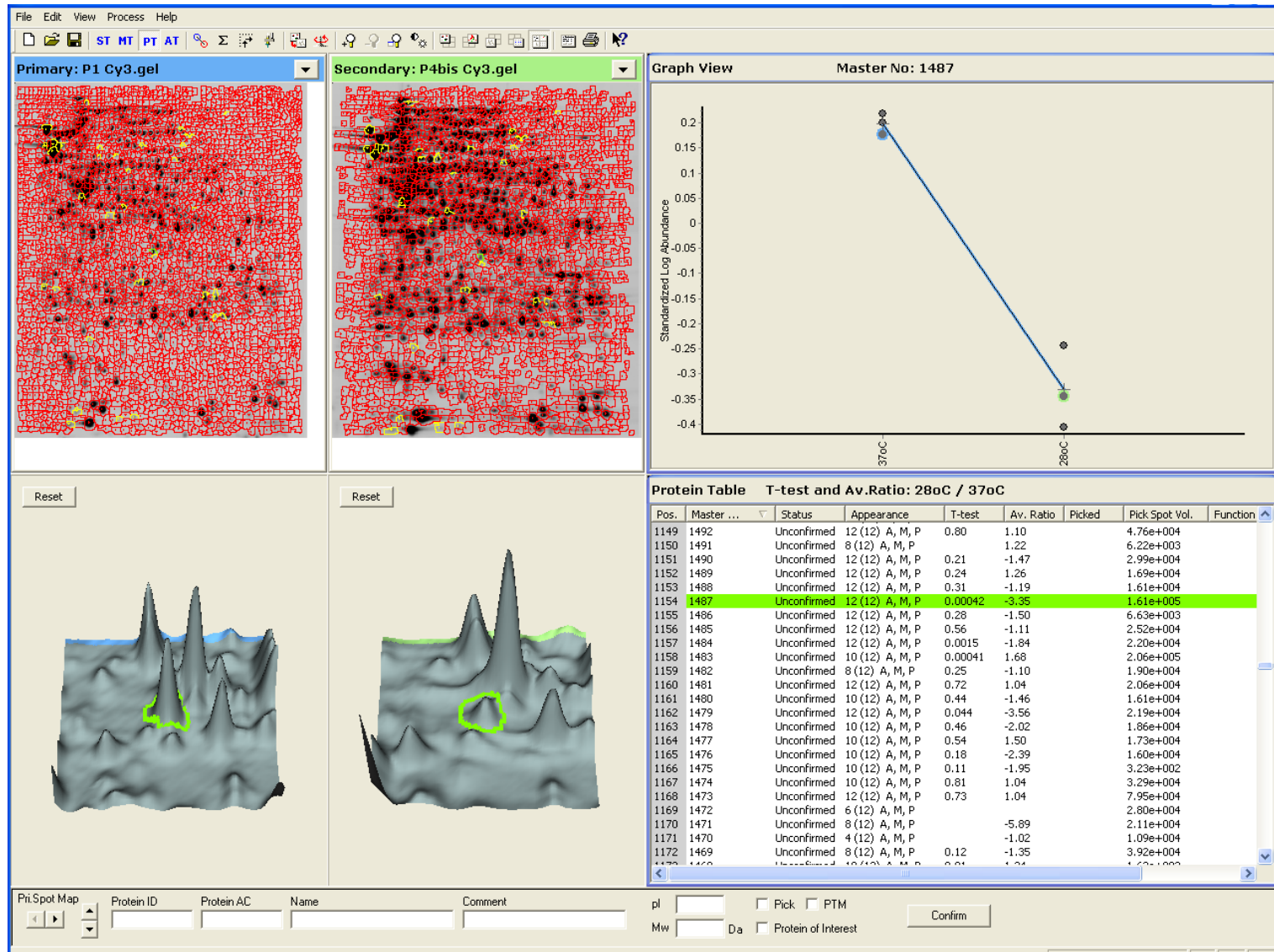
GmhA (PAU_03260)



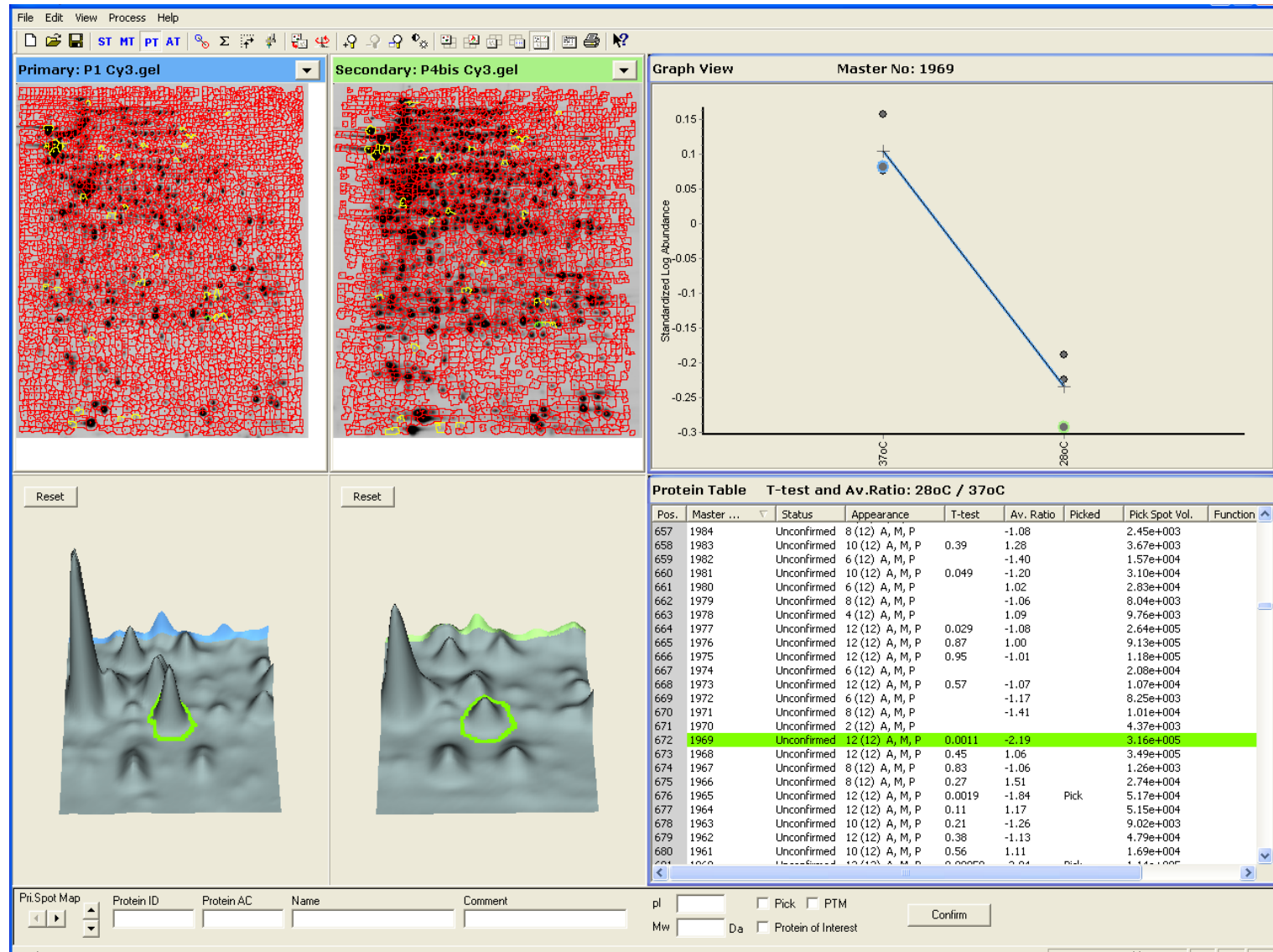
Bcp (PAU_01793)



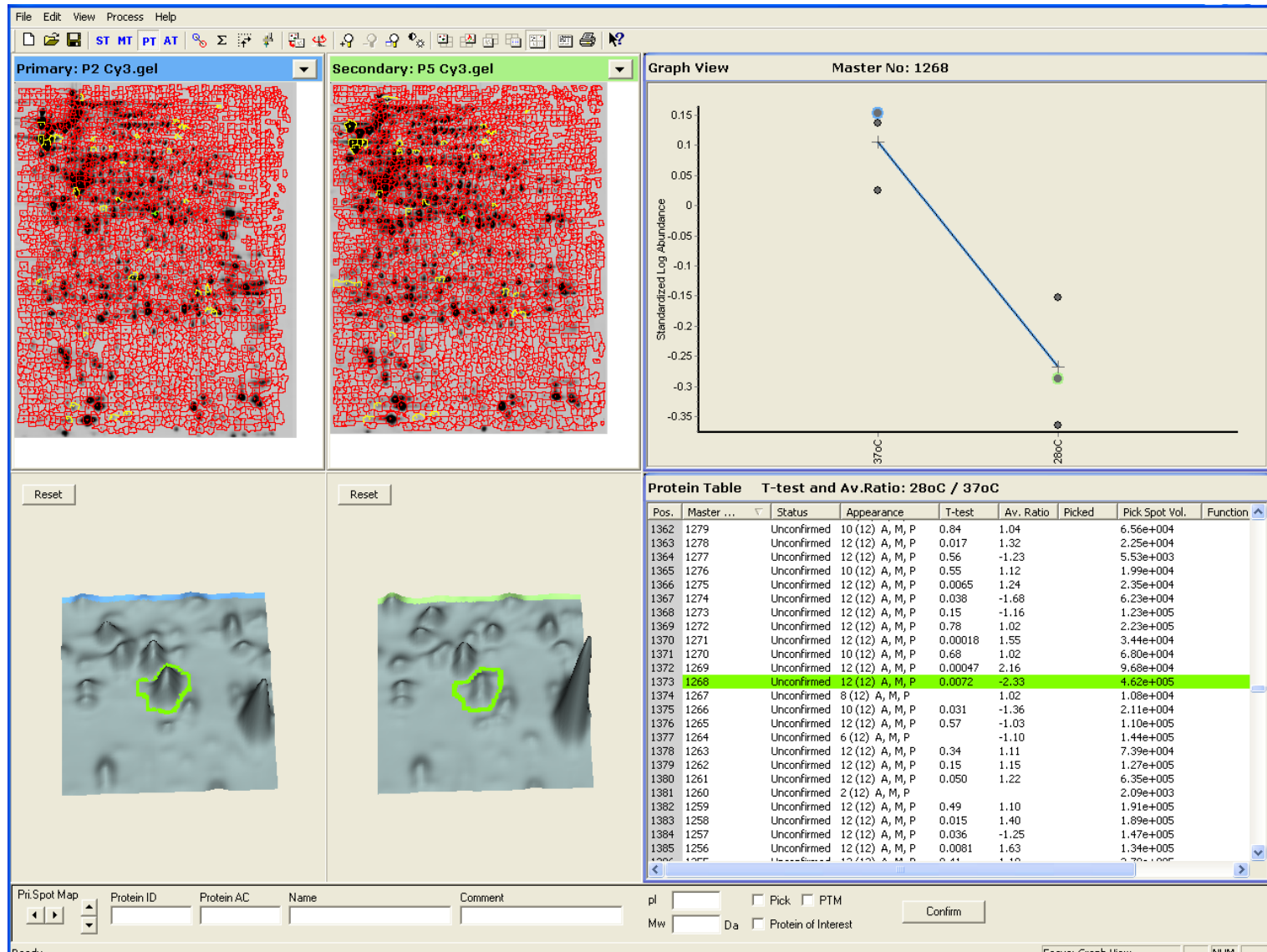
YneB (PAU_01469)



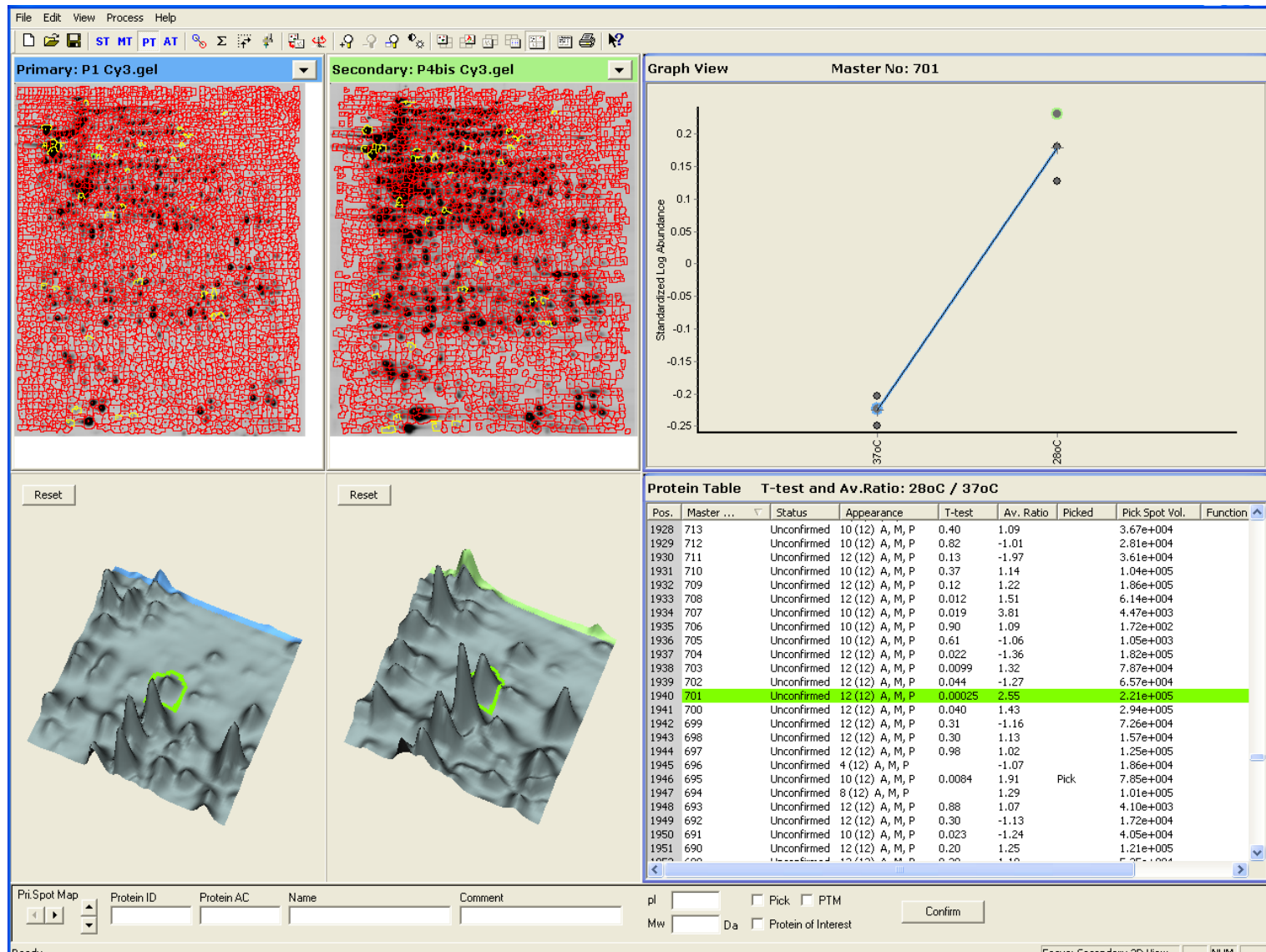
Gst (PAU_01940)



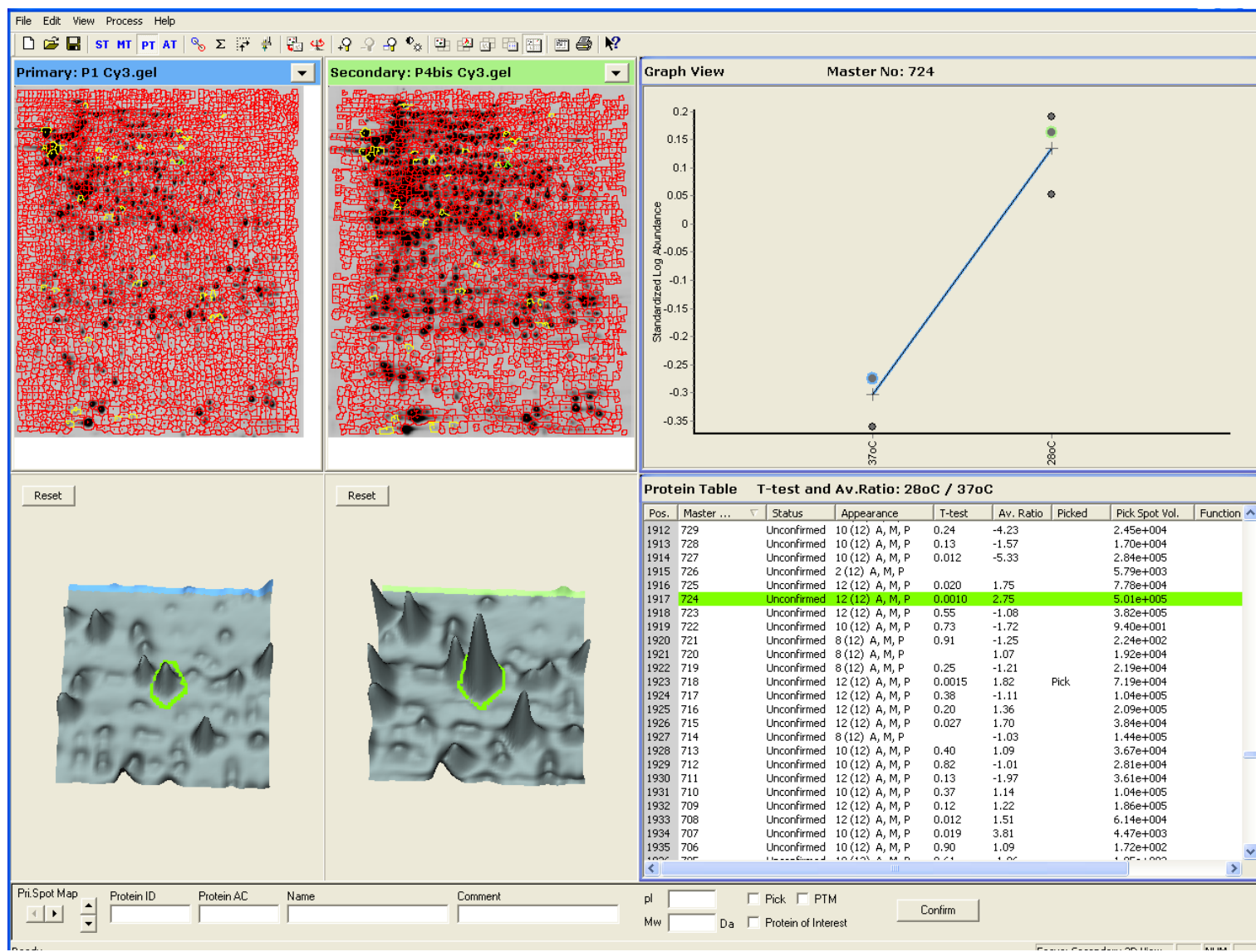
AnsB (PAU_02834)



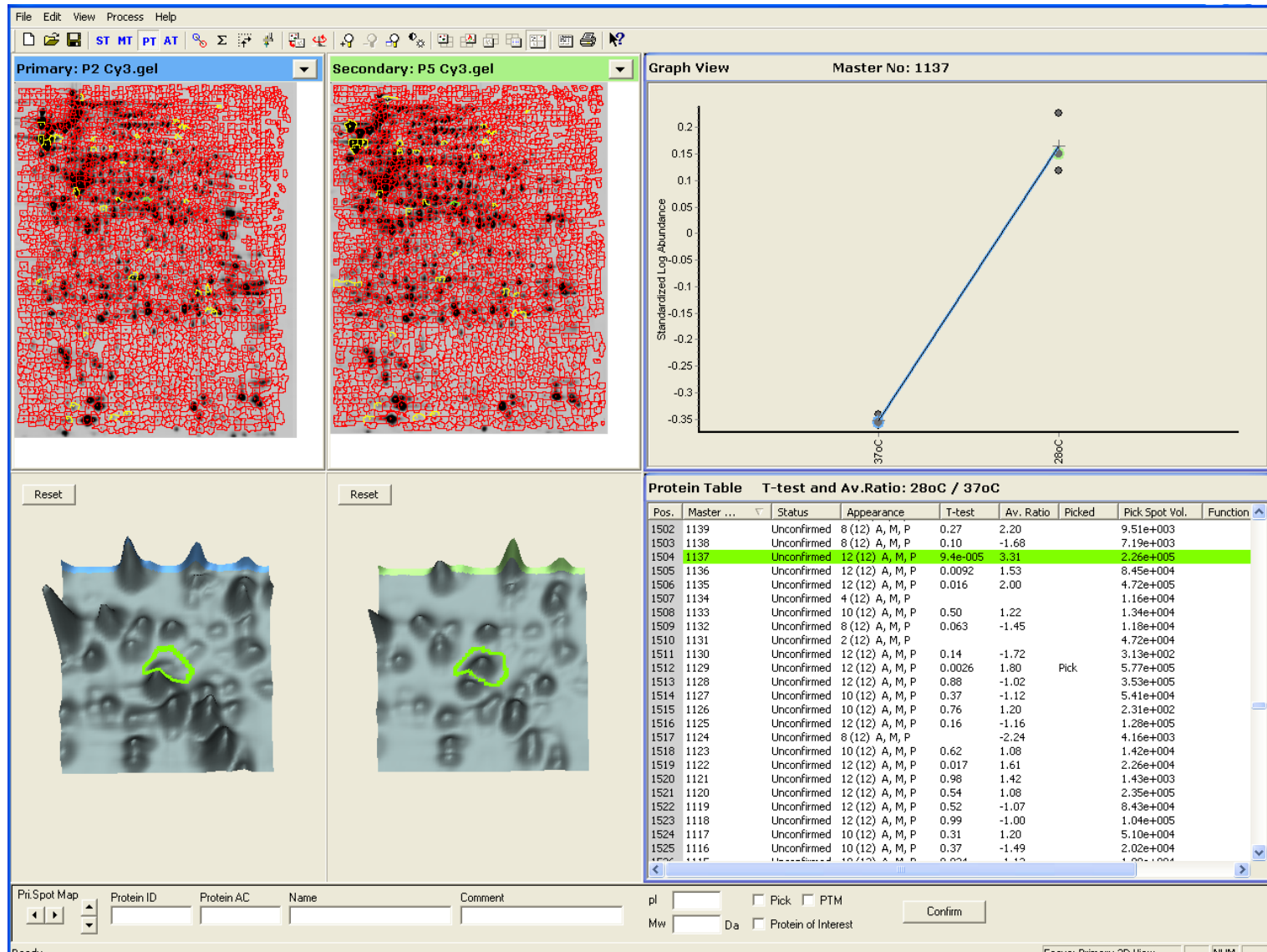
GuaA (PAU_01827)



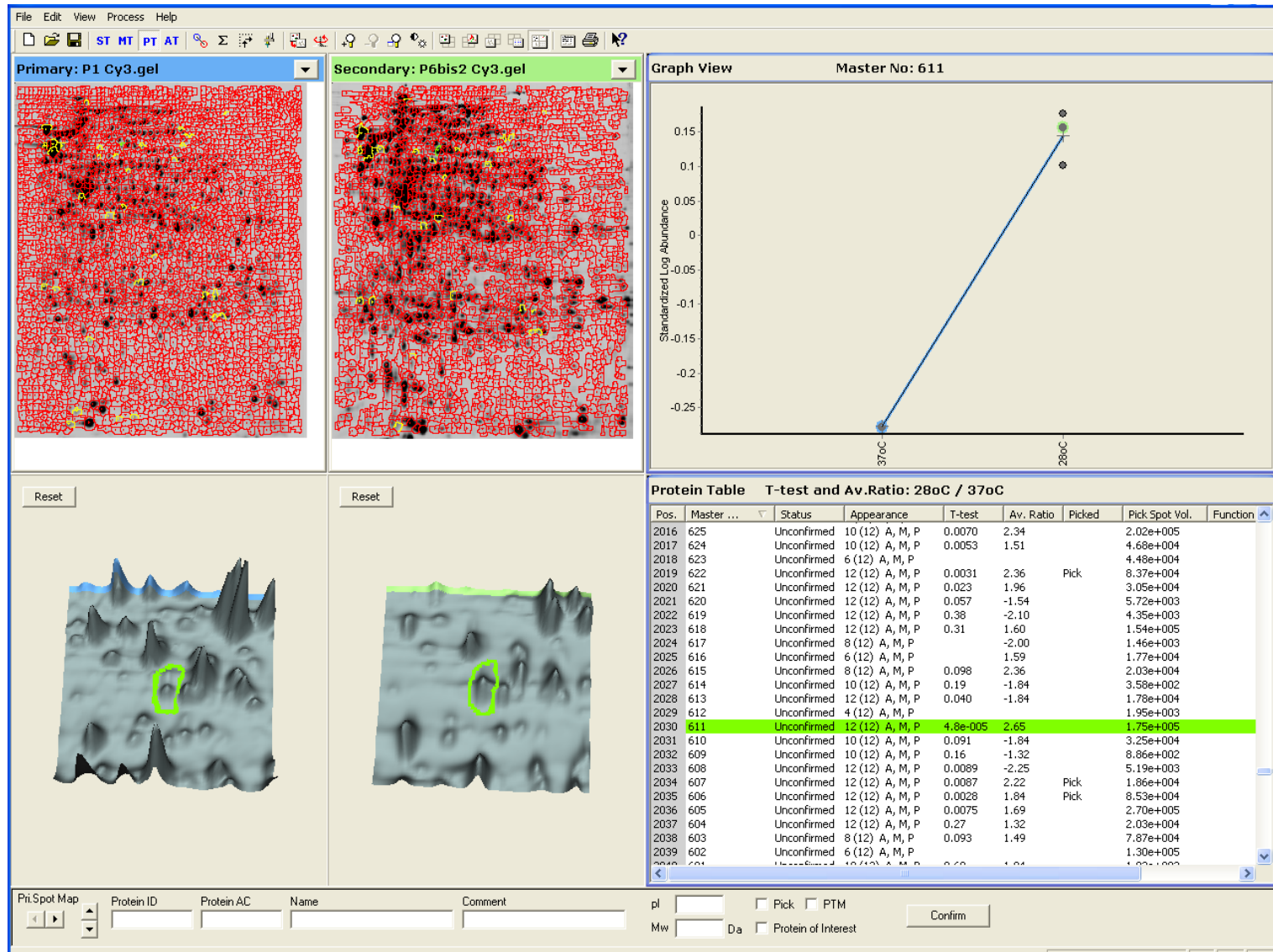
GuaB (PAU_01826)



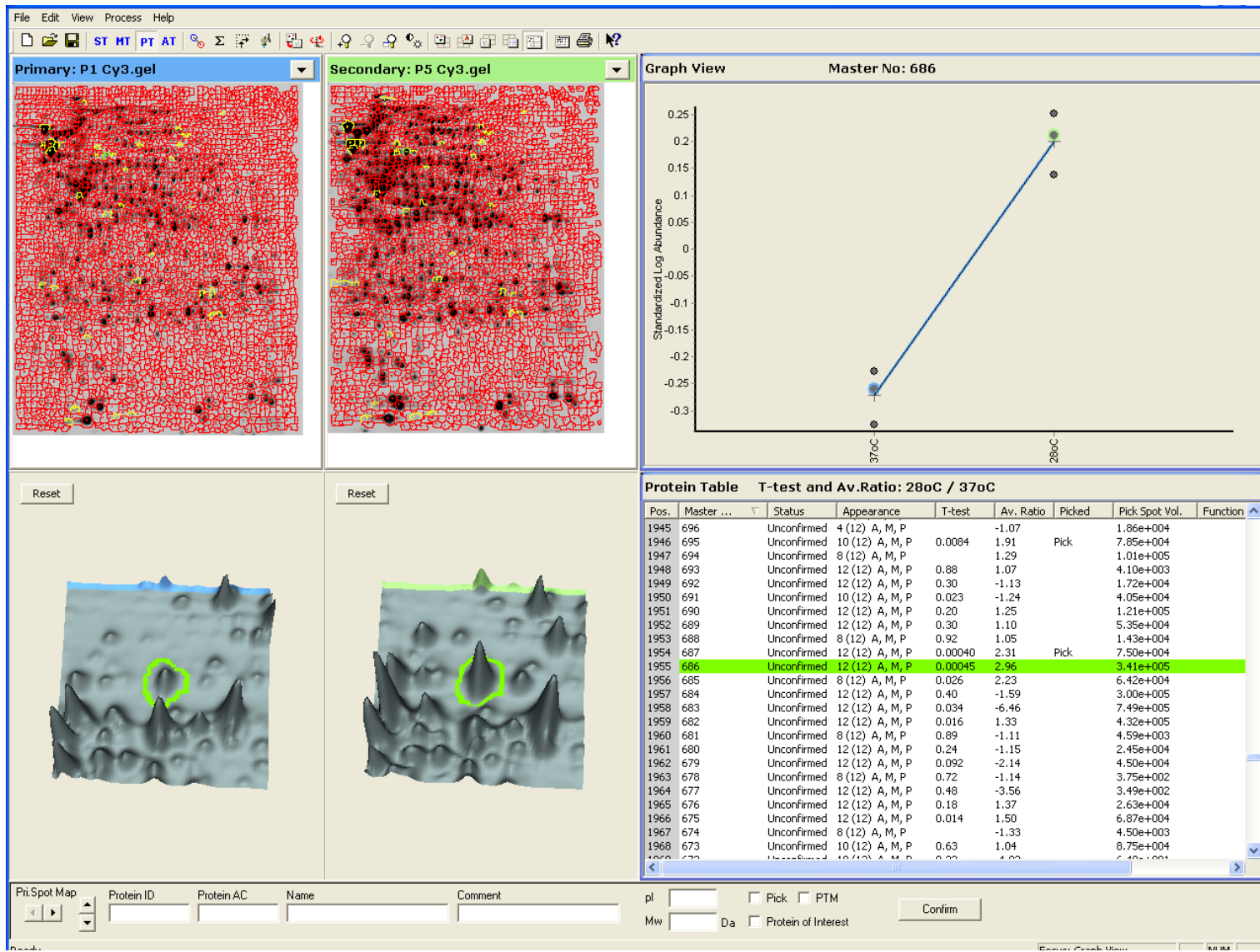
MaIE (PAU_00367)



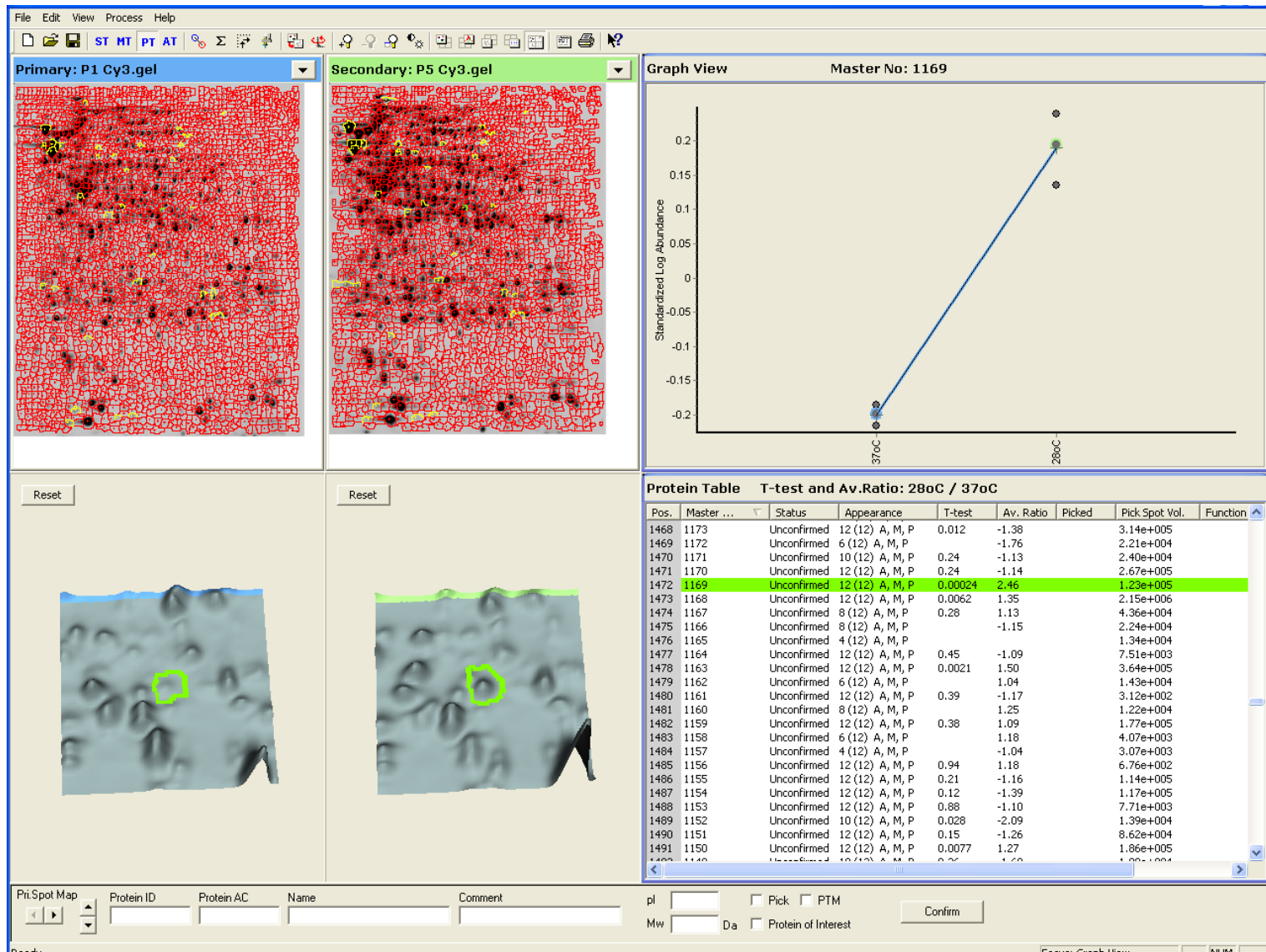
PurH (PAU_00406)



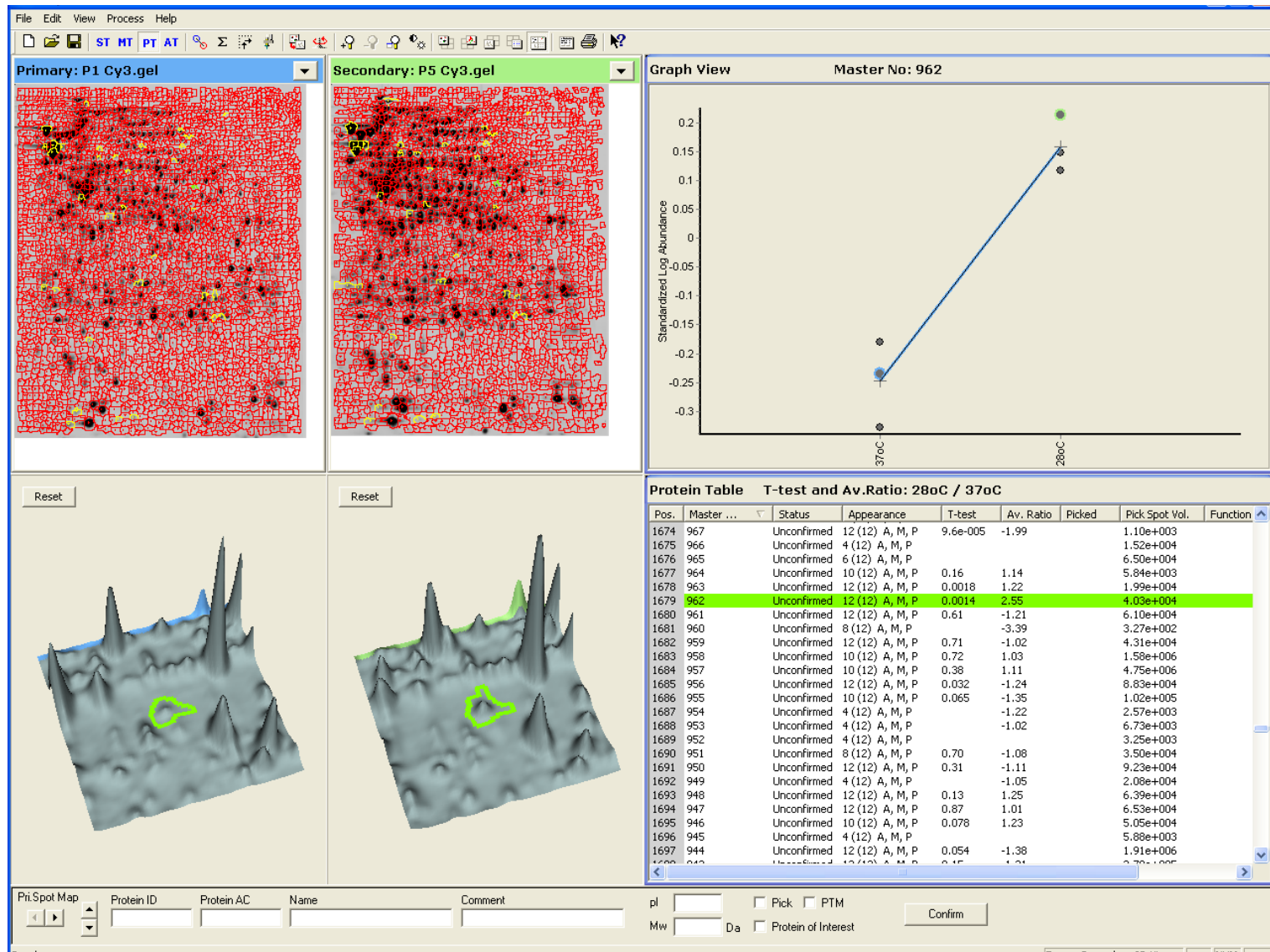
PckA (PAU_000083)



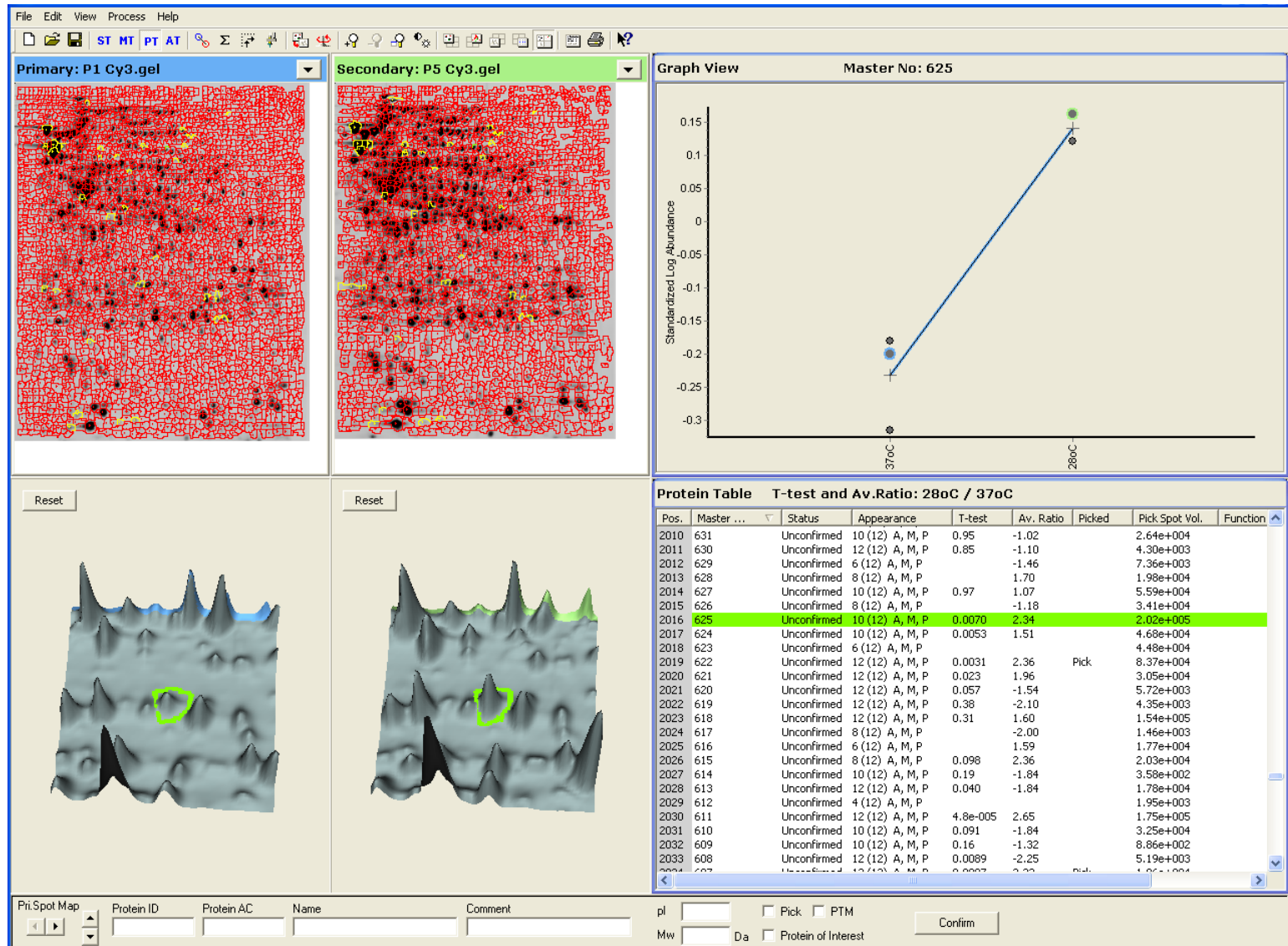
GcvT (PAU_01159)



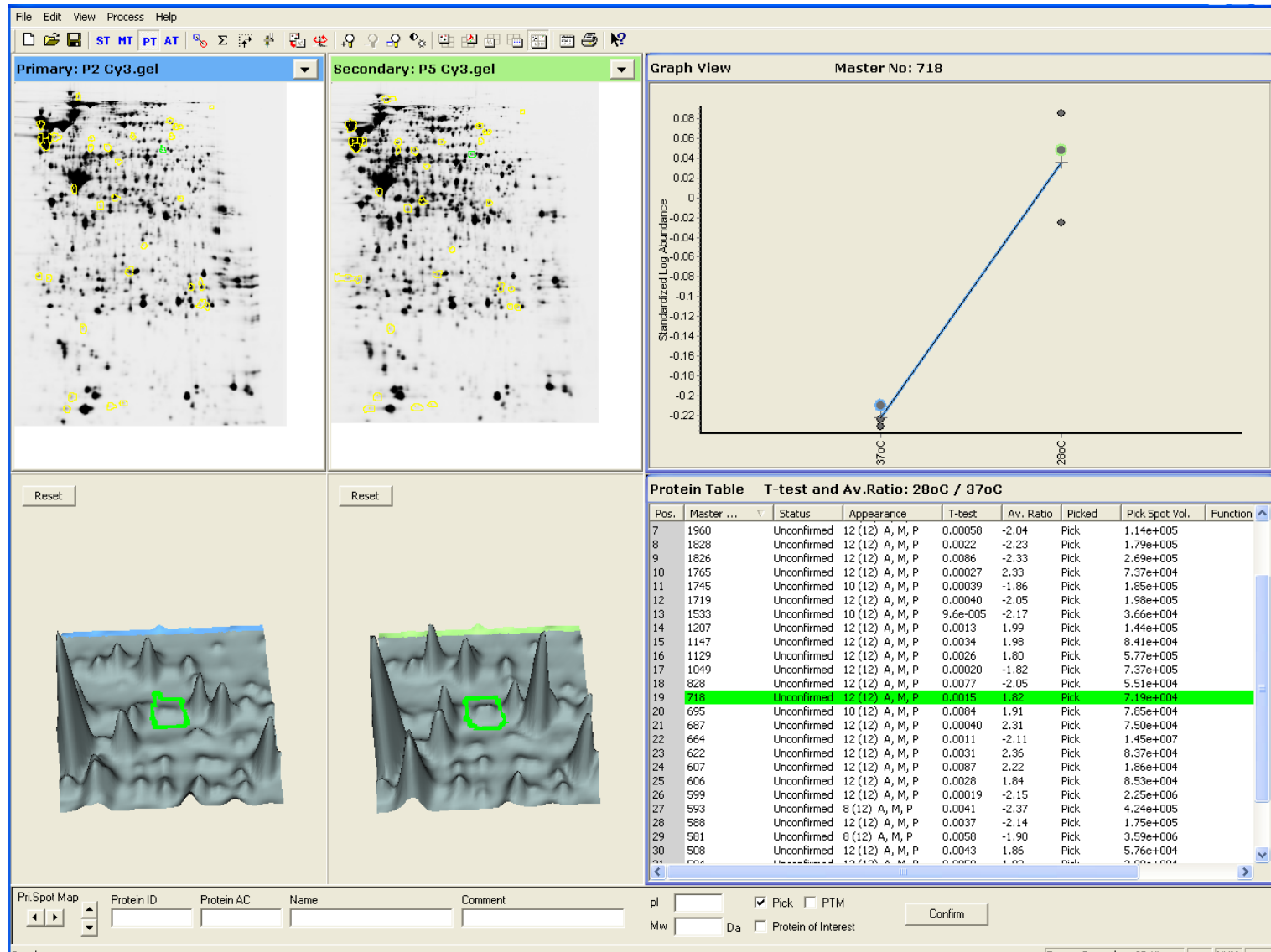
MetY (PAU_01242)



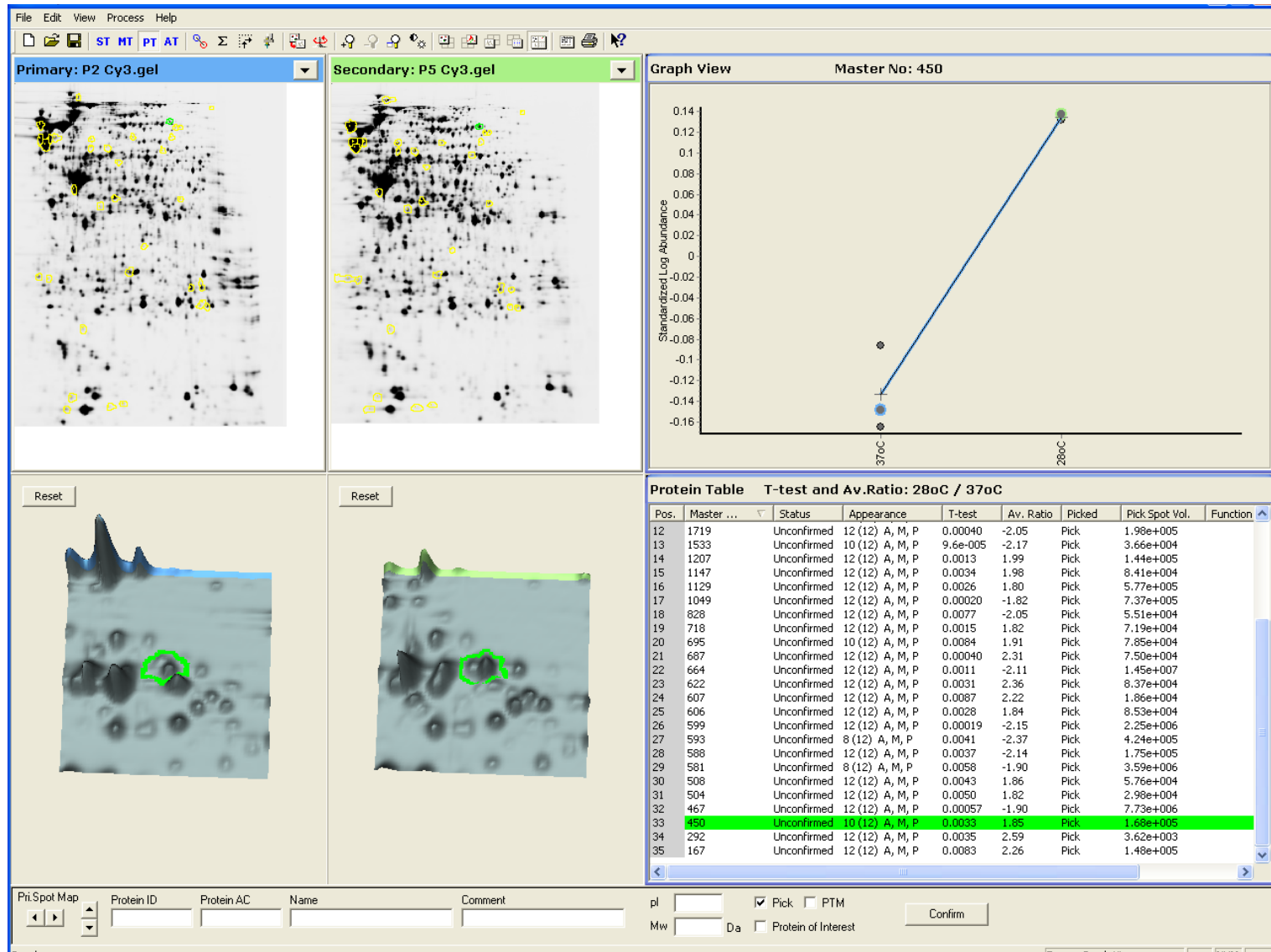
ArnA (PAU_01877)



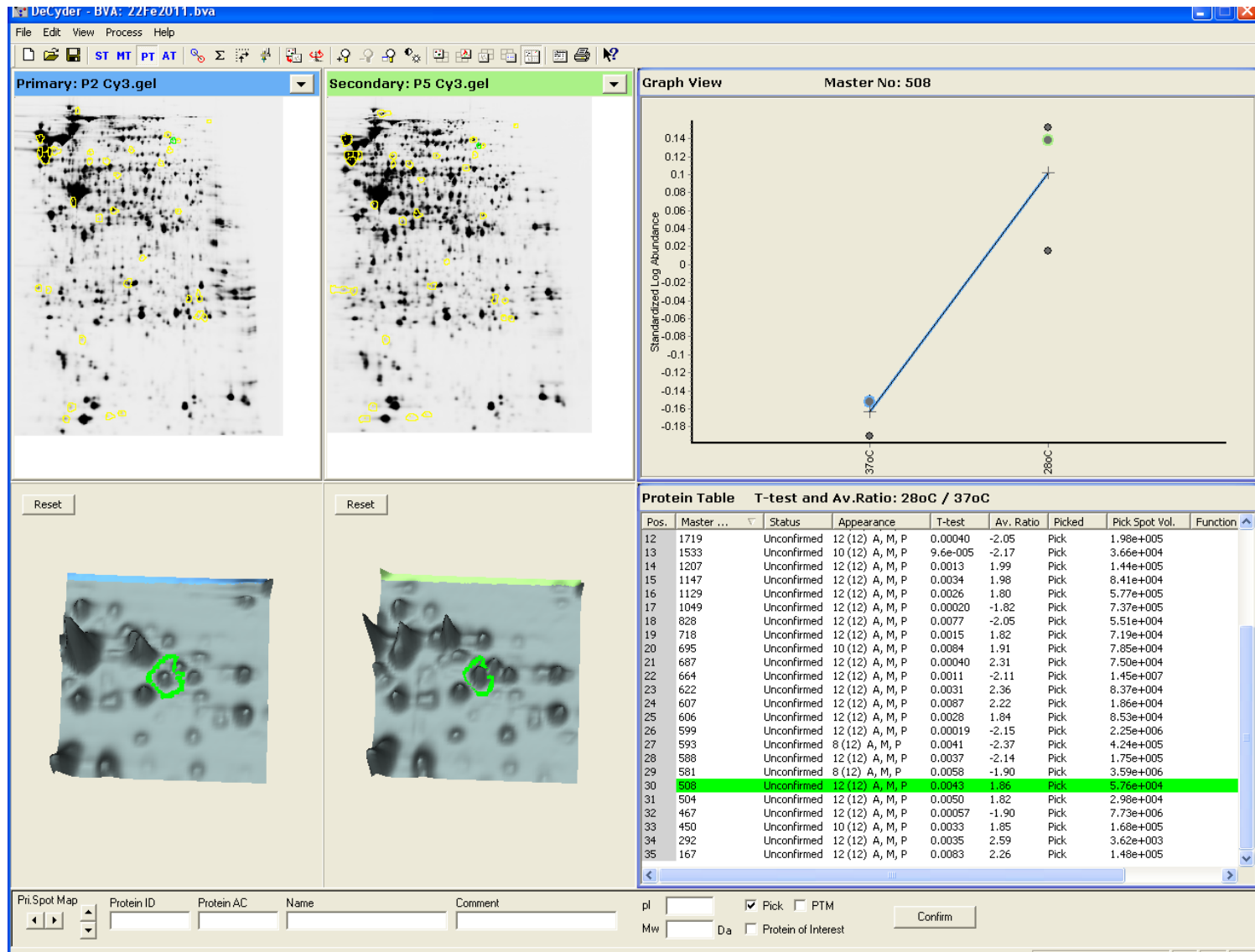
Zwf (PAU_02443)



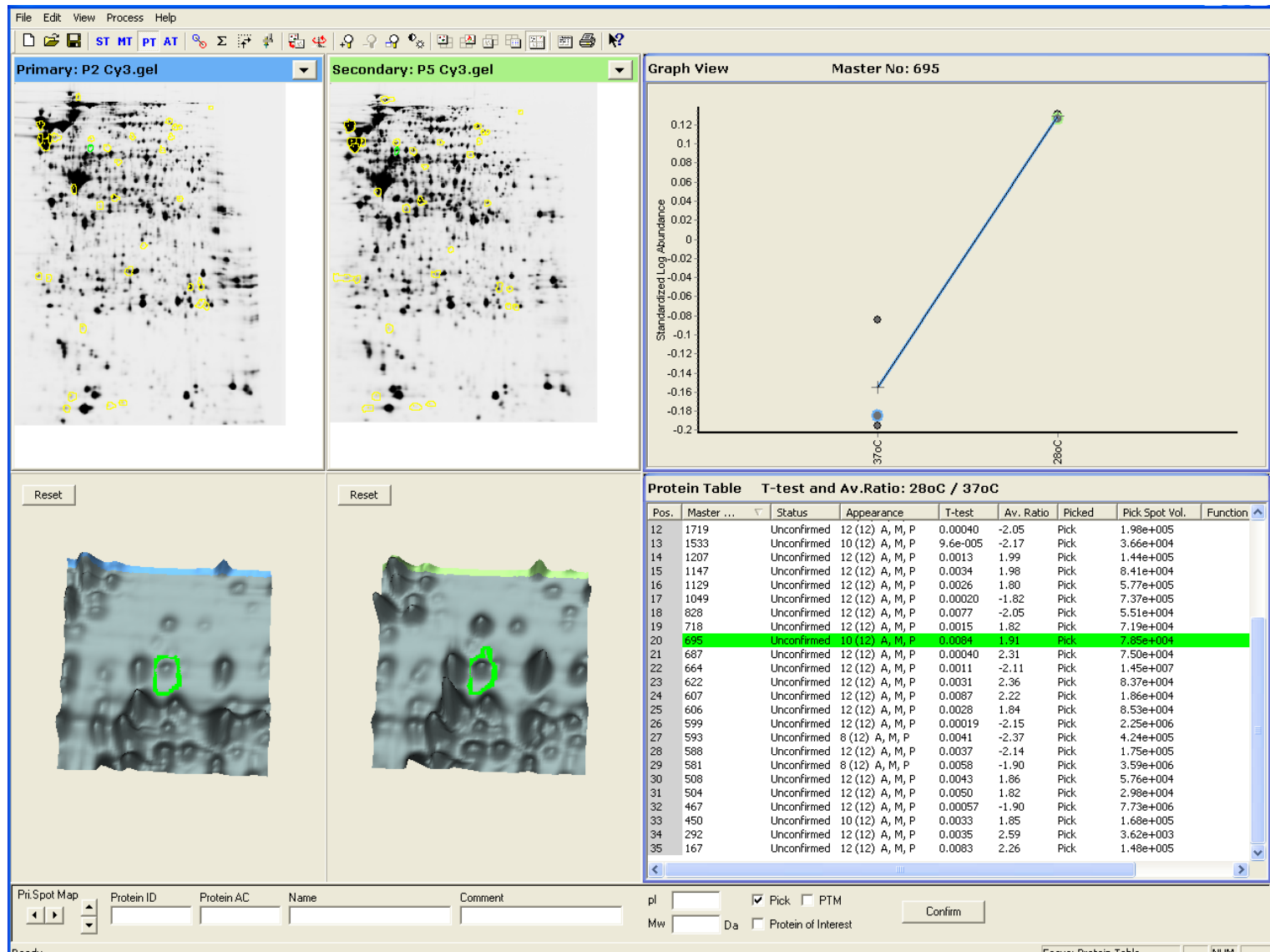
PAU_01687



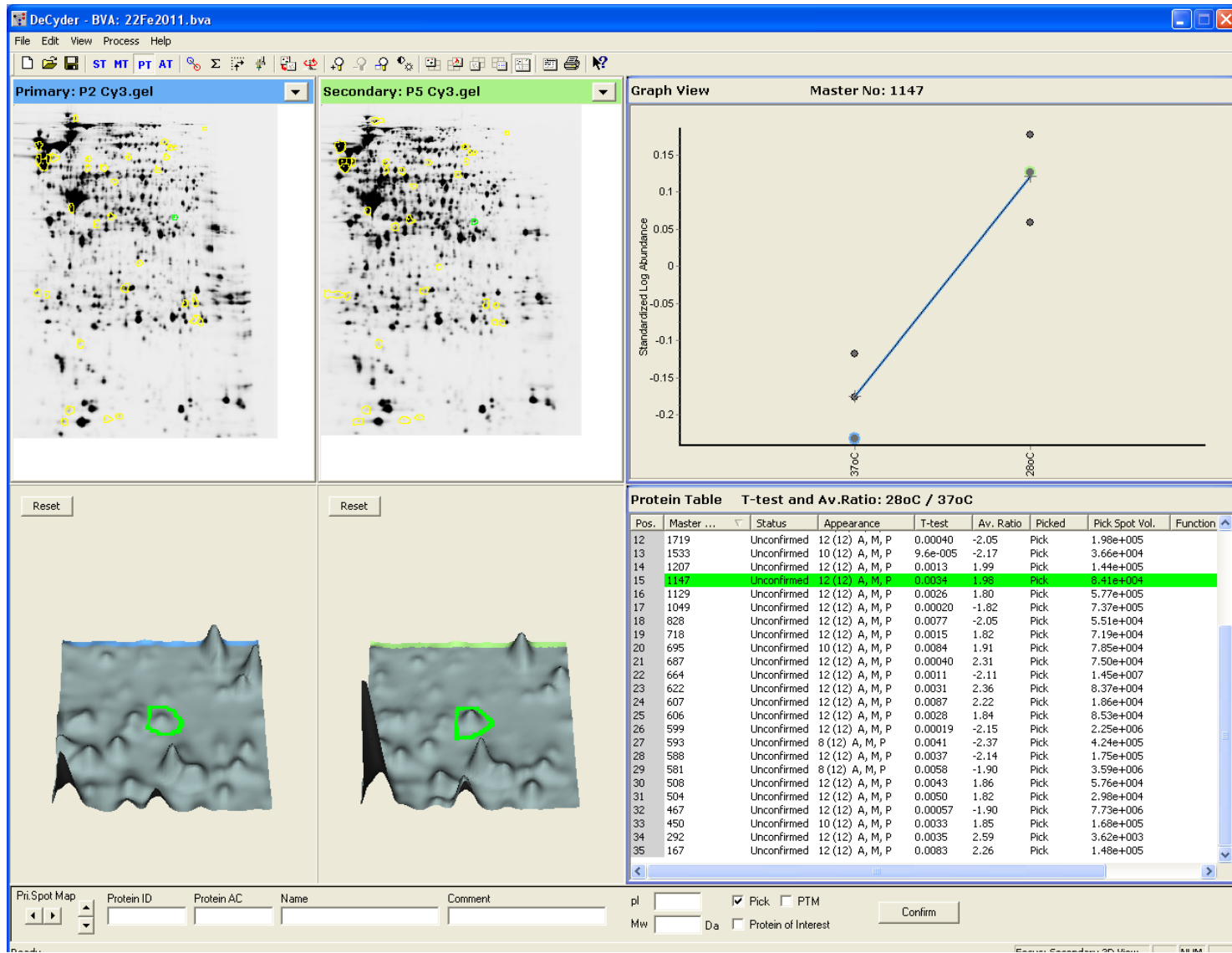
VgrG (PAU_00969)



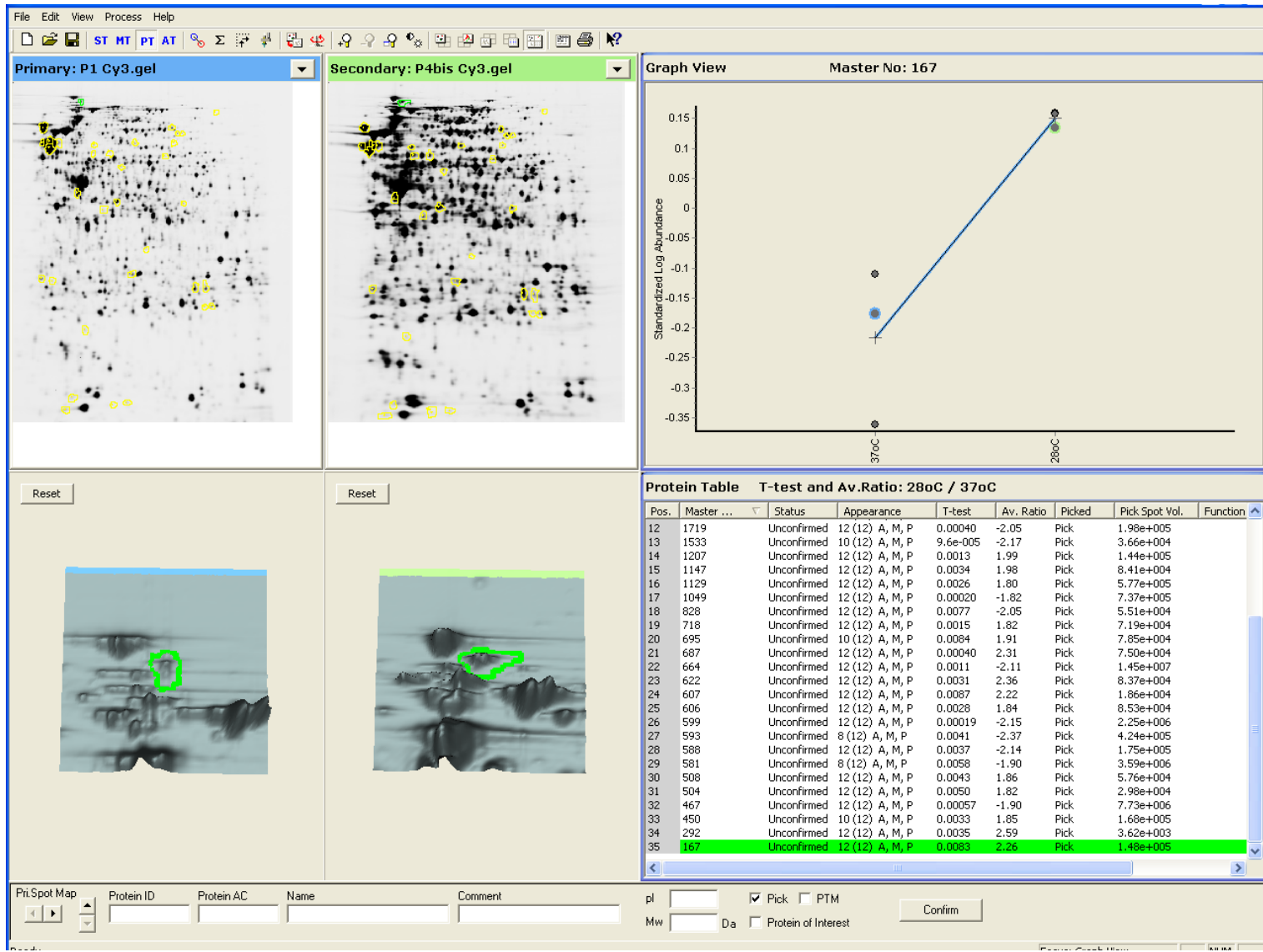
GuaA (PAU_01827)



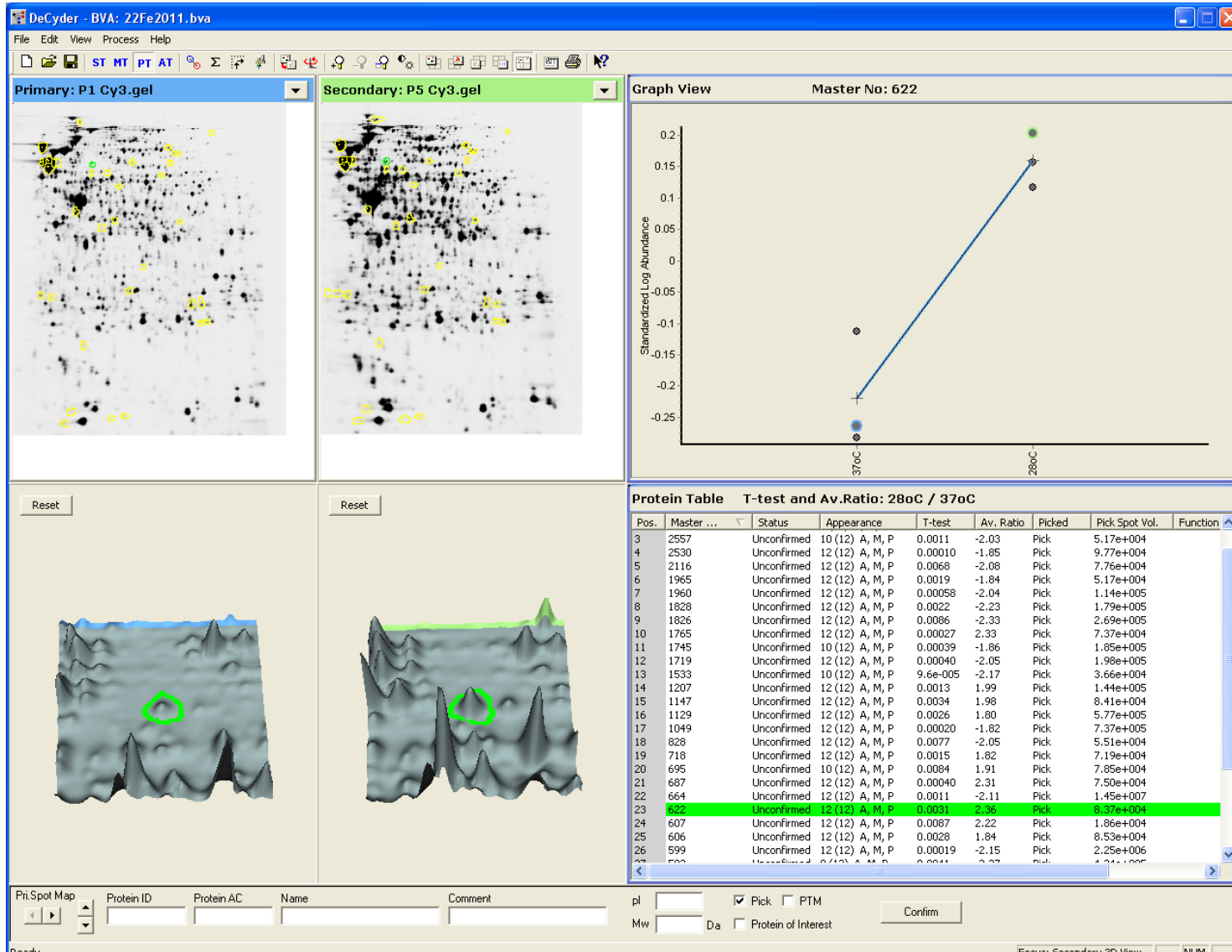
Ggt (PAU_03499)



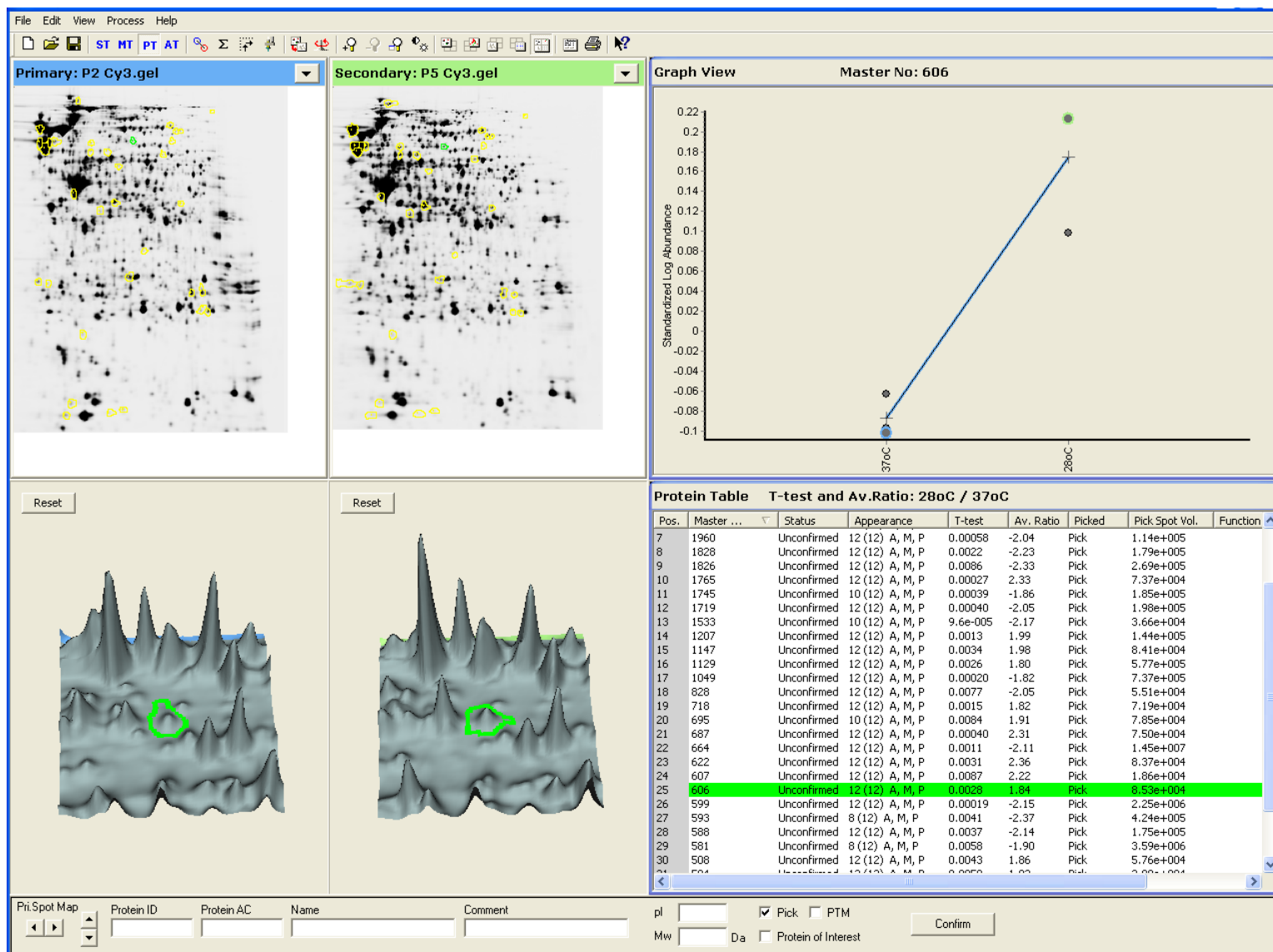
PurL (PAU_01324)



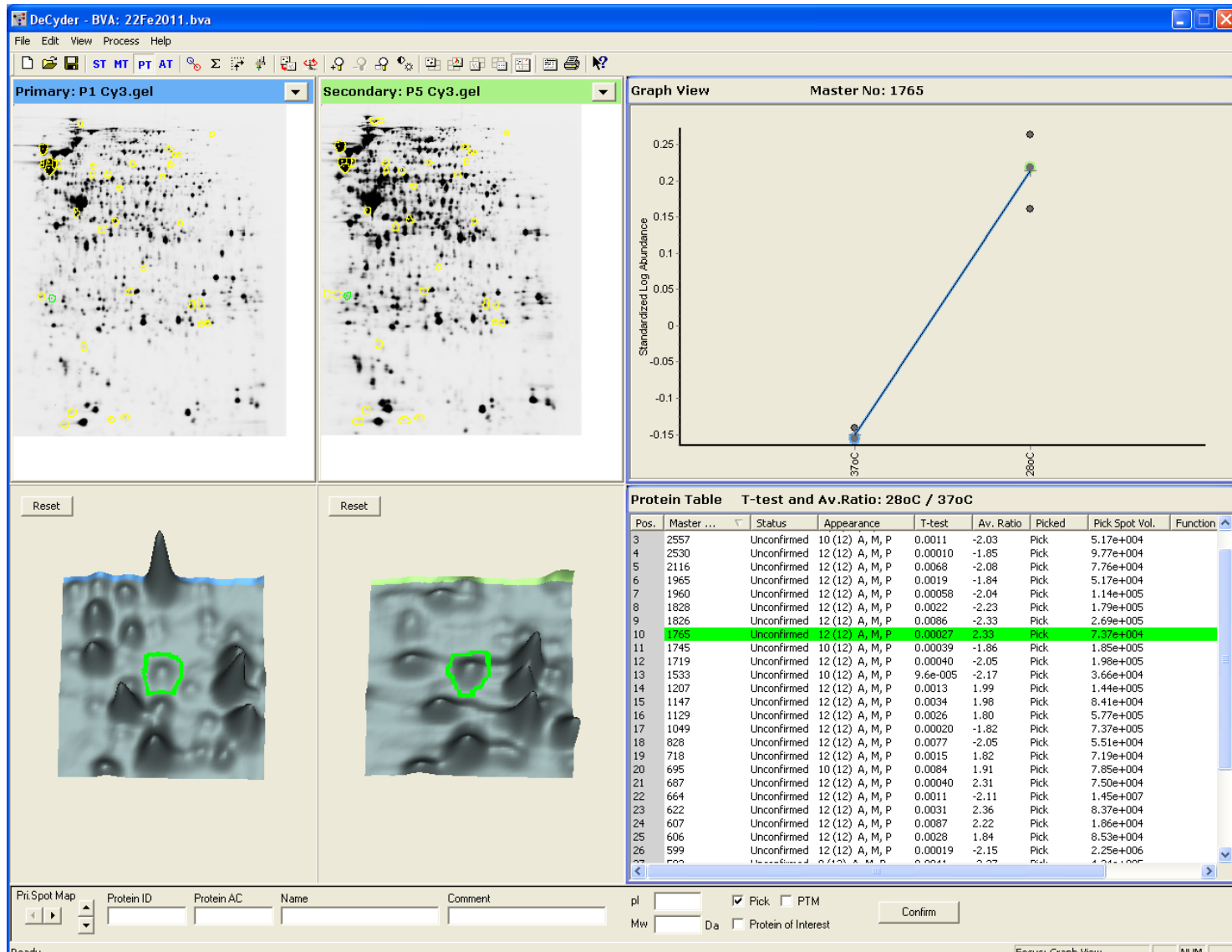
SfcA (PAU_02896)



GroEL (PAU_03756)



DnaK (PAU_00453)



AspC (PAU_02766)

