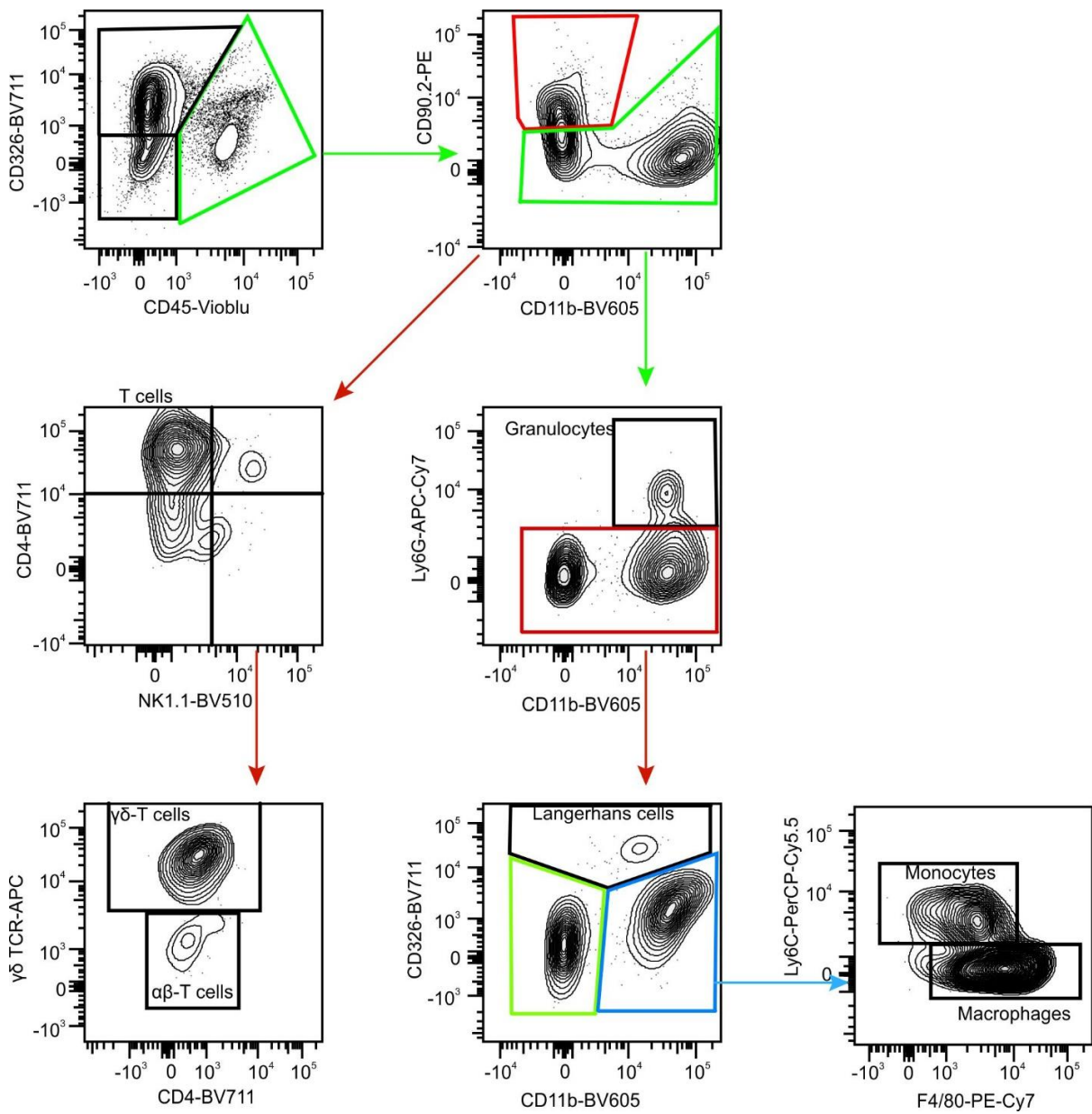


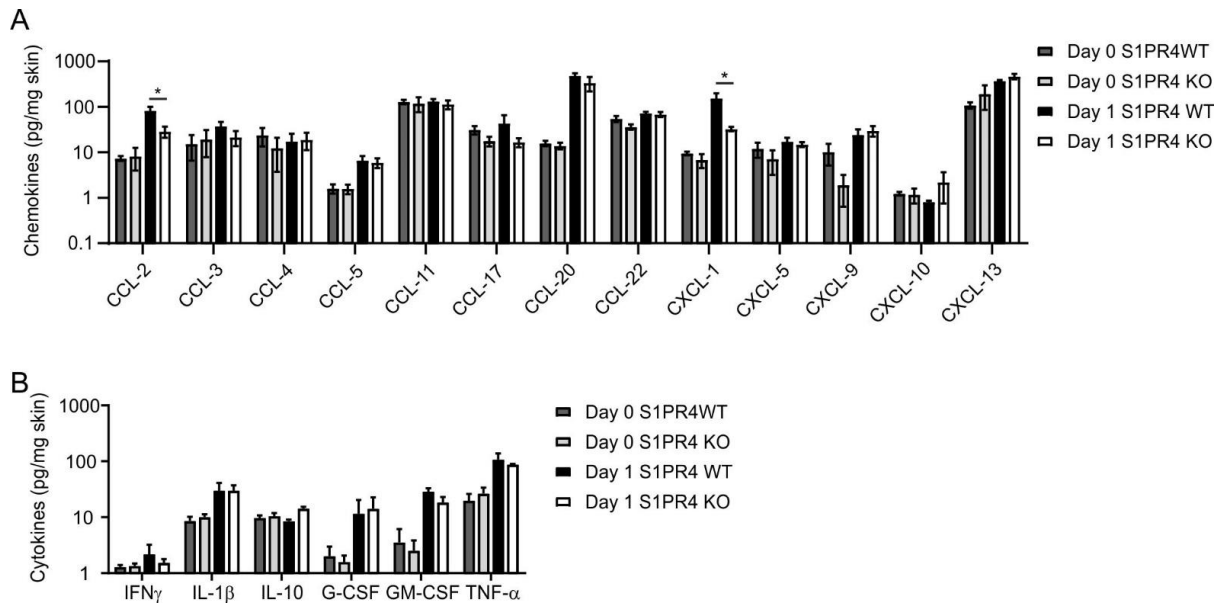
## Supporting information

Supporting information figure 1



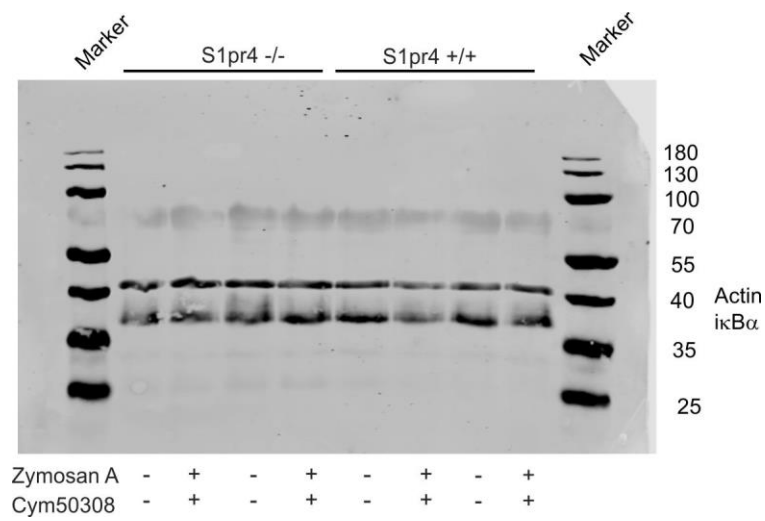
Supporting information figure 1. Gating strategy for immune infiltrates into murine skin. Related to Figure 1. Gating strategy for  $\alpha\beta$ -T cells,  $\gamma\delta$ -T cells, granulocytes, monocytes and macrophages from psoriatic mouse skin as shown in Fig. 1F.

## Supporting information figure 2



Supporting information figure 2. WT and S1pr4<sup>-/-</sup> mice were treated daily with 62.5 mg IMQ on the backskin for 1 day. Protein levels of chemokines (A) and cytokines (B) were in total skin assessed by LegendPlex assay (A) or CBA (B). Data are from three (Day 0), or five (Day 1) individual animals of each genotype pooled from two independent experiments. All data are biological replicates and are shown as mean  $\pm$  SEM. \* $p < 0.05$ ;  $p$ -values were calculated using Students t-test with Holm-Sidak post-hoc test.

### Supporting information figure 3



Supporting information figure 3. Unmodified Western blot showing actin and ikB $\alpha$ -expression as shown in Fig. 3H.