

Figure S1. Multi-color staining of (a) SGPL1^{-/-} tumor tissue, (b) SGPL1^{-/-} tumor-free tissue and (c) SGPL1^{-/-} tissue with tumor-free and tumor areas (magnification 40 \times).

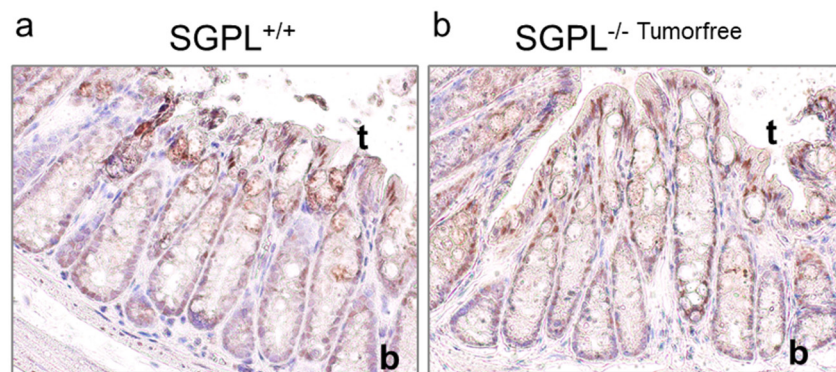


Figure S2. Anti-FOXO3a staining of a) wildtype (SGPL1^{+/+}) and b) SGPL1 knockout (SGPL1^{-/-}) colon sections (magnification 40 \times); in image: t = crypt tip; b = crypt bottom.

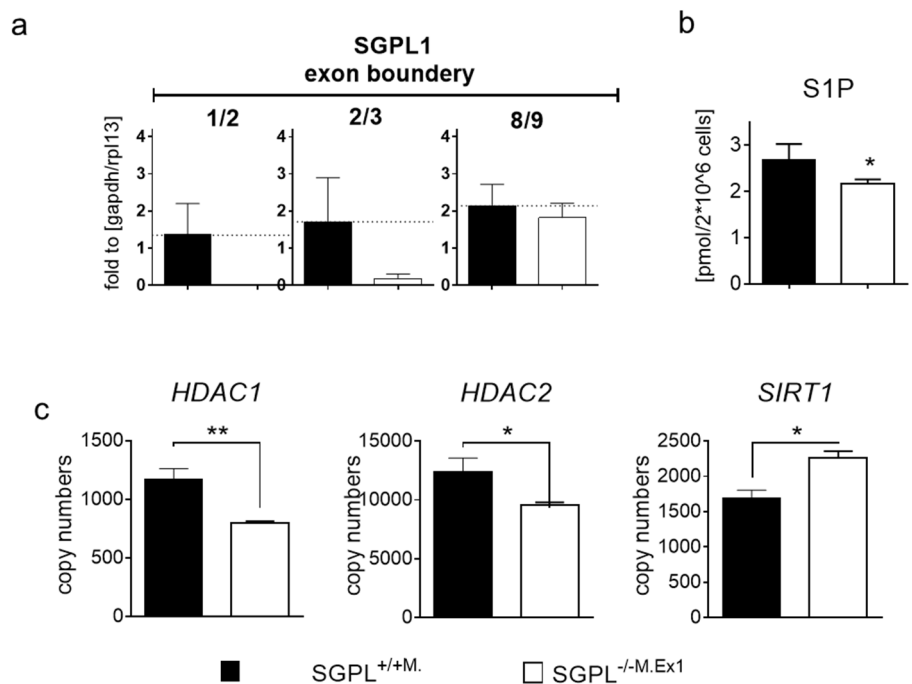


Figure S3. (a) SGPL1 mRNA expression targeted by different primers for exon boundaries 1/2, 2/3 and 8/9; (b) S1P quantification via MS/MS, (d) transcriptome analysis of SGPL1^{+/+M} and SGPL1^{-/-M.Ex1} cells.