

Acta Crystallographica Section E

Structure Reports

Online

ISSN 1600-5368

4-Ethynyl-2,2,6,6-tetramethyl-1,2,5,6-tetrahydropyridine N-oxide

Jan W. Bats,* Olga Frolow and Joachim W. Engels

Institut für Organische Chemie, Universität Frankfurt, Max-von-Laue-Strasse 7, D-60438 Frankfurt am Main, Germany

Correspondence e-mail: bats@chemie.uni-frankfurt.de

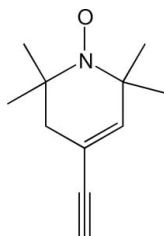
Received 2 February 2009; accepted 9 February 2009

Key indicators: single-crystal X-ray study; $T = 167$ K; mean $\sigma(\text{C}-\text{C}) = 0.001$ Å; R factor = 0.040; wR factor = 0.112; data-to-parameter ratio = 27.3.

The six-membered ring of the title compound, $\text{C}_{11}\text{H}_{16}\text{NO}$, has a distorted envelope conformation. The piperidine N atom deviates by 0.128 (1) Å from the plane through its three neighbouring atoms. In the crystal structure, molecules are connected by intermolecular $\text{C}_{\text{ethynyl}}-\text{H}\cdots\text{O}$ contacts to form chains extending in the $[10\bar{1}]$ direction.

Related literature

For the preparation of the title compound, see: Gannett *et al.* (2001); Frolow *et al.* (2007). For the crystal structures of related compounds see: Igonin *et al.* (1990); Wiley *et al.* (1991); Shklover *et al.* (1990).



Experimental

Crystal data

 $\text{C}_{11}\text{H}_{16}\text{NO}$
 $M_r = 178.25$

 Monoclinic, $P2_1/c$
 $a = 6.0996$ (9) Å

 $b = 20.800$ (3) Å
 $c = 8.3662$ (13) Å
 $\beta = 97.434$ (10)°
 $V = 1052.5$ (3) Å³
 $Z = 4$

 Mo $K\alpha$ radiation
 $\mu = 0.07$ mm⁻¹
 $T = 167$ K
 $0.60 \times 0.50 \times 0.50$ mm

Data collection

 Siemens SMART 1K CCD
 diffractometer
 Absorption correction: none
 18416 measured reflections

 3580 independent reflections
 3143 reflections with $I > 2\sigma(I)$
 $R_{\text{int}} = 0.039$

Refinement

 $R[F^2 > 2\sigma(F^2)] = 0.040$
 $wR(F^2) = 0.112$
 $S = 1.09$
 3580 reflections
 131 parameters

 H atoms treated by a mixture of
 independent and constrained
 refinement
 $\Delta\rho_{\text{max}} = 0.34$ e Å⁻³
 $\Delta\rho_{\text{min}} = -0.17$ e Å⁻³

Table 1

Hydrogen-bond geometry (Å, °).

| $D-H\cdots A$ | $D-H$ | $H\cdots A$ | $D\cdots A$ | $D-H\cdots A$ |
|---|------------|-------------|-------------|---------------|
| $\text{C7}-\text{H7A}\cdots\text{O1}^i$ | 0.944 (14) | 2.354 (15) | 3.2318 (13) | 154.6 (13) |

Symmetry code: (i) $x + 1, y, z + 1$.

Data collection: *SMART* (Siemens, 1995); cell refinement: *SMART*; data reduction: *SAINT* (Siemens, 1995); program(s) used to solve structure: *SHELXS97* (Sheldrick, 2008); program(s) used to refine structure: *SHELXL97* (Sheldrick, 2008); molecular graphics: *SHELXTL* (Sheldrick, 2008); software used to prepare material for publication: *SHELXL97*.

Supplementary data and figures for this paper are available from the IUCr electronic archives (Reference: SU2096).

References

- Frolow, O., Bode, B. E. & Engels, J. W. (2007). *Nucleosides Nucleotides Nucleic Acids*, **26**, 655–659.
- Gannett, P. M., Darian, E., Powell, J. H. & Johnson, E. M. (2001). *Synth. Commun.* **31**, 2137–2141.
- Igonin, V. A., Shklover, V. E., Struchkov, Yu. T., Lazareva, O. L. & Vinogradov, G. A. (1990). *Acta Cryst.* **C46**, 776–778.
- Sheldrick, G. M. (2008). *Acta Cryst.* **A64**, 112–122.
- Shklover, V. E., Zamaev, I. A., Struchkov, Y. T., Medvedeva, T. V., Korshak, Y. V., Ovchinnikov, A. A. & Spector, V. N. (1990). *Z. Kristallogr.* **191**, 9–14.
- Siemens (1995). *SMART* and *SAINT*. Siemens Analytical X-ray Instruments Inc., Madison, Wisconsin, USA.
- Wiley, D. W., Calabrese, J. C., Harlow, R. L. & Miller, J. S. (1991). *Angew. Chem. Int. Ed.* **30**, 450–452.

supplementary materials

Acta Cryst. (2009). E65, o529 [doi:10.1107/S1600536809004681]

4-Ethynyl-2,2,6,6-tetramethyl-1,2,5,6-tetrahydropyridine *N*-oxide

J. W. Bats, O. Frolow and J. W. Engels

Comment

For EPR measurements of RNA, DNA or proteins, the occurrence of paramagnetic species is required. The title compound is a nitroxide spin label compound. Its synthesis and application for DNA labeling have been reported by Gannett *et al.* (2001). Frolow *et al.* (2007) reported an improved synthesis of the compound and its coupling to uridine. Here we report on the crystal structure of the title compound.

The molecular structure of the title compound is shown in Fig. 1. The geometrical parameters in the title compound are very similar to those in the 2,2,6,6-tetramethyl-1-oxyl-3,4-dehydropiperidine fragment of closely related molecules (Igonin *et al.*, 1990; Wiley *et al.*, 1991; Shklover *et al.*, 1990). The six-membered ring has a distorted envelope conformation with atoms N1 and C5 deviating by 0.186 (1) and 0.725 (2) Å, respectively, in the same direction from the mean plane through atoms C1-C4 [planar to within 0.005 (1) Å]. Atom N1 shows a small degree of pyramidalization. The sum of the three valence angles about N1 is 357.6 (1)° and it deviates by 0.128 (1) Å from the plane through the three neighbouring atoms, O1, C1 and C5.

In the crystal structure molecules are connected by intermolecular C_{ethynyl}—H···O contacts to form chains extending in the [1 0 -1] direction (Fig. 2 and Table 1).

Experimental

The synthesis of the title compound has been reported by Frolow *et al.* (2007). Crystals were obtained by sublimation at atmospheric pressure.

Refinement

The H atoms at C2 and C7 were located in difference Fourier maps and freely refined: C-H = 0.973 (13) and 0.944 (15) Å, respectively. The remainder of the H atoms were positioned geometrically and treated as riding: C-H = 0.98 - 0.99 Å with $U_{\text{iso}}\text{H} = k \times U_{\text{eq}}(\text{C})$, where $k = 1.2$ for (CH and CH₂) and 1.5 for (CH₃).

Figures

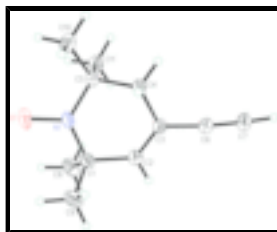


Fig. 1. The molecular structure of the title compound, shown with 50% probability displacement ellipsoids. H atoms are drawn as small spheres of arbitrary radii.

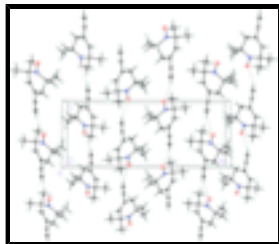


Fig. 2. The crystal packing of the title compound, viewed down the *a* axis. Intermolecular C_{ethynyl}—H···O contacts are shown as dashed lines.

4-Ethynyl-2,2,6,6-tetramethyl-1,2,5,6-tetrahydropyridine *N*-oxide

Crystal data

C₁₁H₁₆NO

M_r = 178.25

Monoclinic, *P*2₁/*c*

Hall symbol: -*P* 2ybc

a = 6.0996 (9) Å

b = 20.800 (3) Å

c = 8.3662 (13) Å

β = 97.434 (10)°

V = 1052.5 (3) Å³

Z = 4

*F*₀₀₀ = 388

D_x = 1.125 Mg m⁻³

Mo *K*α radiation

λ = 0.71073 Å

Cell parameters from 212 reflections

θ = 3–23°

μ = 0.07 mm⁻¹

T = 167 K

Block, yellow

0.6 × 0.5 × 0.5 mm

Data collection

Siemens SMART 1K CCD
diffractometer

Radiation source: normal-focus sealed tube

Monochromator: graphite

T = 167 K

ω scans

Absorption correction: none

18416 measured reflections

3580 independent reflections

3143 reflections with *I* > 2σ(*I*)

*R*_{int} = 0.039

θ_{max} = 32.2°

θ_{min} = 2.0°

h = -8→8

k = -31→27

l = -12→12

Refinement

Refinement on *F*²

Least-squares matrix: full

R[*F*² > 2σ(*F*²)] = 0.040

wR(*F*²) = 0.112

S = 1.09

3580 reflections

Hydrogen site location: inferred from neighbouring sites

H atoms treated by a mixture of independent and constrained refinement

$w = 1/[\sigma^2(F_o^2) + (0.05P)^2 + 0.2P]$

where $P = (F_o^2 + 2F_c^2)/3$

(Δ/σ)_{max} = 0.002

Δρ_{max} = 0.34 e Å⁻³

Δρ_{min} = -0.17 e Å⁻³

131 parameters

Extinction correction: SHELXL97 (Sheldrick, 2008),

$$F_c^* = kFc[1+0.001xFc^2\lambda^3/\sin(2\theta)]^{-1/4}$$

Primary atom site location: structure-invariant direct methods

Extinction coefficient: 0.074 (6)

Secondary atom site location: difference Fourier map

Special details

Geometry. All e.s.d.'s (except the e.s.d. in the dihedral angle between two l.s. planes) are estimated using the full covariance matrix. The cell e.s.d.'s are taken into account individually in the estimation of e.s.d.'s in distances, angles and torsion angles; correlations between e.s.d.'s in cell parameters are only used when they are defined by crystal symmetry. An approximate (isotropic) treatment of cell e.s.d.'s is used for estimating e.s.d.'s involving l.s. planes.

Refinement. Refinement of F^2 against ALL reflections. The weighted R -factor wR and goodness of fit S are based on F^2 , conventional R -factors R are based on F , with F set to zero for negative F^2 . The threshold expression of $F^2 > \sigma(F^2)$ is used only for calculating R -factors(gt) *etc.* and is not relevant to the choice of reflections for refinement. R -factors based on F^2 are statistically about twice as large as those based on F , and R -factors based on ALL data will be even larger.

Fractional atomic coordinates and isotropic or equivalent isotropic displacement parameters (\AA^2)

| | x | y | z | U_{iso}^*/U_{eq} |
|------|---------------|-------------|---------------|--------------------|
| O1 | -0.00063 (12) | 0.39282 (4) | 0.01634 (8) | 0.03761 (18) |
| N1 | 0.15408 (11) | 0.38503 (3) | 0.13455 (8) | 0.02345 (15) |
| C1 | 0.31309 (14) | 0.33197 (4) | 0.11809 (9) | 0.02439 (16) |
| C2 | 0.48668 (14) | 0.32849 (4) | 0.26317 (9) | 0.02460 (16) |
| C3 | 0.48149 (12) | 0.36207 (4) | 0.39876 (9) | 0.02137 (15) |
| C4 | 0.29668 (13) | 0.40897 (4) | 0.41379 (9) | 0.02327 (16) |
| H4A | 0.3526 | 0.4438 | 0.4887 | 0.028* |
| H4B | 0.1769 | 0.3865 | 0.4607 | 0.028* |
| C5 | 0.20201 (12) | 0.43844 (4) | 0.25172 (8) | 0.02002 (15) |
| C6 | 0.64656 (13) | 0.35531 (4) | 0.53690 (10) | 0.02476 (16) |
| C7 | 0.77337 (15) | 0.35377 (5) | 0.65871 (11) | 0.03106 (19) |
| C8 | 0.42478 (17) | 0.34218 (5) | -0.03471 (10) | 0.0348 (2) |
| H8A | 0.5173 | 0.3808 | -0.0220 | 0.052* |
| H8B | 0.3112 | 0.3474 | -0.1280 | 0.052* |
| H8C | 0.5169 | 0.3048 | -0.0515 | 0.052* |
| C9 | 0.17967 (17) | 0.26909 (4) | 0.10502 (11) | 0.0344 (2) |
| H9A | 0.1071 | 0.2635 | 0.2020 | 0.052* |
| H9B | 0.2793 | 0.2328 | 0.0947 | 0.052* |
| H9C | 0.0675 | 0.2709 | 0.0100 | 0.052* |
| C10 | -0.01285 (14) | 0.47358 (5) | 0.27003 (10) | 0.02967 (18) |
| H10A | -0.1216 | 0.4428 | 0.3008 | 0.045* |
| H10B | -0.0704 | 0.4939 | 0.1674 | 0.045* |
| H10C | 0.0155 | 0.5066 | 0.3536 | 0.045* |
| C11 | 0.36583 (13) | 0.48486 (4) | 0.18847 (10) | 0.02556 (16) |
| H11A | 0.3027 | 0.5012 | 0.0826 | 0.038* |
| H11B | 0.5043 | 0.4622 | 0.1786 | 0.038* |
| H11C | 0.3953 | 0.5209 | 0.2637 | 0.038* |
| H2A | 0.607 (2) | 0.2984 (7) | 0.2539 (16) | 0.042 (3)* |

supplementary materials

H7A 0.870 (2) 0.3546 (8) 0.7563 (18) 0.057 (4)*

Atomic displacement parameters (\AA^2)

| | U^{11} | U^{22} | U^{33} | U^{12} | U^{13} | U^{23} |
|-----|------------|------------|------------|-------------|-------------|-------------|
| O1 | 0.0374 (4) | 0.0424 (4) | 0.0274 (3) | 0.0000 (3) | -0.0174 (3) | -0.0025 (3) |
| N1 | 0.0240 (3) | 0.0261 (3) | 0.0183 (3) | -0.0032 (2) | -0.0049 (2) | -0.0005 (2) |
| C1 | 0.0298 (4) | 0.0241 (4) | 0.0186 (3) | -0.0030 (3) | 0.0005 (3) | -0.0028 (3) |
| C2 | 0.0266 (4) | 0.0241 (4) | 0.0223 (3) | 0.0018 (3) | 0.0000 (3) | -0.0008 (3) |
| C3 | 0.0221 (3) | 0.0224 (3) | 0.0187 (3) | 0.0004 (2) | -0.0010 (2) | 0.0020 (2) |
| C4 | 0.0242 (3) | 0.0289 (4) | 0.0158 (3) | 0.0044 (3) | -0.0007 (3) | 0.0006 (3) |
| C5 | 0.0189 (3) | 0.0234 (3) | 0.0167 (3) | -0.0001 (2) | -0.0017 (2) | 0.0005 (2) |
| C6 | 0.0259 (4) | 0.0242 (4) | 0.0231 (3) | 0.0030 (3) | -0.0008 (3) | 0.0009 (3) |
| C7 | 0.0307 (4) | 0.0341 (4) | 0.0262 (4) | 0.0056 (3) | -0.0049 (3) | 0.0002 (3) |
| C8 | 0.0428 (5) | 0.0408 (5) | 0.0219 (4) | -0.0050 (4) | 0.0080 (3) | -0.0045 (3) |
| C9 | 0.0450 (5) | 0.0264 (4) | 0.0303 (4) | -0.0095 (3) | -0.0009 (4) | -0.0039 (3) |
| C10 | 0.0227 (4) | 0.0383 (5) | 0.0273 (4) | 0.0073 (3) | 0.0006 (3) | 0.0031 (3) |
| C11 | 0.0242 (3) | 0.0241 (4) | 0.0274 (4) | -0.0034 (3) | -0.0006 (3) | 0.0026 (3) |

Geometric parameters (\AA , $^\circ$)

| | | | |
|-----------|-------------|------------|-------------|
| O1—N1 | 1.2858 (9) | C6—C7 | 1.1975 (12) |
| N1—C5 | 1.4854 (10) | C7—H7A | 0.944 (15) |
| N1—C1 | 1.4874 (11) | C8—H8A | 0.9800 |
| C1—C2 | 1.5057 (11) | C8—H8B | 0.9800 |
| C1—C9 | 1.5368 (12) | C8—H8C | 0.9800 |
| C1—C8 | 1.5391 (12) | C9—H9A | 0.9800 |
| C2—C3 | 1.3360 (11) | C9—H9B | 0.9800 |
| C2—H2A | 0.973 (13) | C9—H9C | 0.9800 |
| C3—C6 | 1.4381 (10) | C10—H10A | 0.9800 |
| C3—C4 | 1.5082 (11) | C10—H10B | 0.9800 |
| C4—C5 | 1.5314 (10) | C10—H10C | 0.9800 |
| C4—H4A | 0.9900 | C11—H11A | 0.9800 |
| C4—H4B | 0.9900 | C11—H11B | 0.9800 |
| C5—C10 | 1.5255 (11) | C11—H11C | 0.9800 |
| C5—C11 | 1.5322 (11) | | |
| O1—N1—C5 | 118.39 (7) | C7—C6—C3 | 174.02 (9) |
| O1—N1—C1 | 116.41 (6) | C6—C7—H7A | 177.0 (10) |
| C5—N1—C1 | 122.76 (6) | C1—C8—H8A | 109.5 |
| N1—C1—C2 | 111.10 (6) | C1—C8—H8B | 109.5 |
| N1—C1—C9 | 107.01 (7) | H8A—C8—H8B | 109.5 |
| C2—C1—C9 | 109.09 (7) | C1—C8—H8C | 109.5 |
| N1—C1—C8 | 109.79 (7) | H8A—C8—H8C | 109.5 |
| C2—C1—C8 | 109.60 (7) | H8B—C8—H8C | 109.5 |
| C9—C1—C8 | 110.22 (7) | C1—C9—H9A | 109.5 |
| C3—C2—C1 | 124.60 (7) | C1—C9—H9B | 109.5 |
| C3—C2—H2A | 120.3 (8) | H9A—C9—H9B | 109.5 |
| C1—C2—H2A | 115.1 (8) | C1—C9—H9C | 109.5 |

| | | | |
|-------------|-------------|---------------|-------------|
| C2—C3—C6 | 122.69 (7) | H9A—C9—H9C | 109.5 |
| C2—C3—C4 | 120.60 (7) | H9B—C9—H9C | 109.5 |
| C6—C3—C4 | 116.70 (7) | C5—C10—H10A | 109.5 |
| C3—C4—C5 | 112.67 (6) | C5—C10—H10B | 109.5 |
| C3—C4—H4A | 109.1 | H10A—C10—H10B | 109.5 |
| C5—C4—H4A | 109.1 | C5—C10—H10C | 109.5 |
| C3—C4—H4B | 109.1 | H10A—C10—H10C | 109.5 |
| C5—C4—H4B | 109.1 | H10B—C10—H10C | 109.5 |
| H4A—C4—H4B | 107.8 | C5—C11—H11A | 109.5 |
| N1—C5—C10 | 109.04 (6) | C5—C11—H11B | 109.5 |
| N1—C5—C4 | 107.72 (6) | H11A—C11—H11B | 109.5 |
| C10—C5—C4 | 109.47 (6) | C5—C11—H11C | 109.5 |
| N1—C5—C11 | 108.95 (6) | H11A—C11—H11C | 109.5 |
| C10—C5—C11 | 109.87 (7) | H11B—C11—H11C | 109.5 |
| C4—C5—C11 | 111.72 (6) | | |
| O1—N1—C1—C2 | 179.37 (7) | C2—C3—C4—C5 | -29.55 (11) |
| C5—N1—C1—C2 | 17.41 (10) | C6—C3—C4—C5 | 151.16 (7) |
| O1—N1—C1—C9 | -61.65 (9) | O1—N1—C5—C10 | 33.57 (9) |
| C5—N1—C1—C9 | 136.40 (7) | C1—N1—C5—C10 | -164.82 (7) |
| O1—N1—C1—C8 | 57.96 (9) | O1—N1—C5—C4 | 152.29 (7) |
| C5—N1—C1—C8 | -103.99 (8) | C1—N1—C5—C4 | -46.10 (9) |
| N1—C1—C2—C3 | 9.05 (11) | O1—N1—C5—C11 | -86.35 (8) |
| C9—C1—C2—C3 | -108.68 (9) | C1—N1—C5—C11 | 75.26 (8) |
| C8—C1—C2—C3 | 130.56 (9) | C3—C4—C5—N1 | 49.52 (8) |
| C1—C2—C3—C6 | 177.45 (7) | C3—C4—C5—C10 | 167.96 (7) |
| C1—C2—C3—C4 | -1.79 (12) | C3—C4—C5—C11 | -70.11 (9) |

Hydrogen-bond geometry (Å, °)

| <i>D</i> —H... <i>A</i> | <i>D</i> —H | H... <i>A</i> | <i>D</i> ... <i>A</i> | <i>D</i> —H... <i>A</i> |
|--------------------------|-------------|---------------|-----------------------|-------------------------|
| C7—H7A...O1 ⁱ | 0.944 (14) | 2.354 (15) | 3.2318 (13) | 154.6 (13) |

Symmetry codes: (i) $x+1, y, z+1$.

Fig. 1

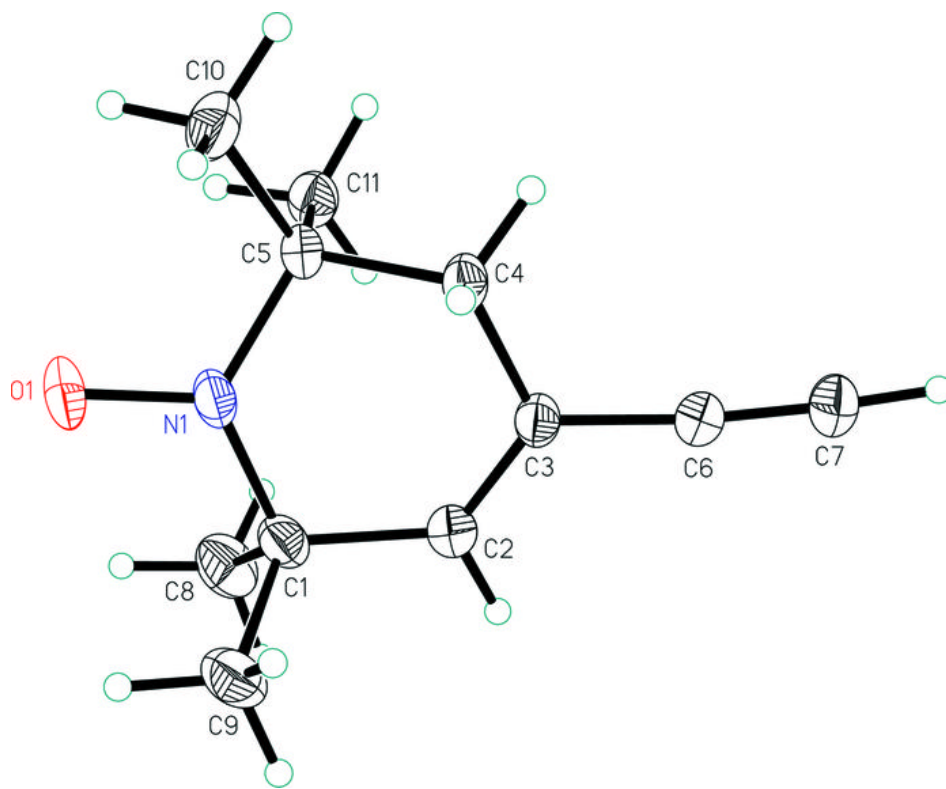


Fig. 2

